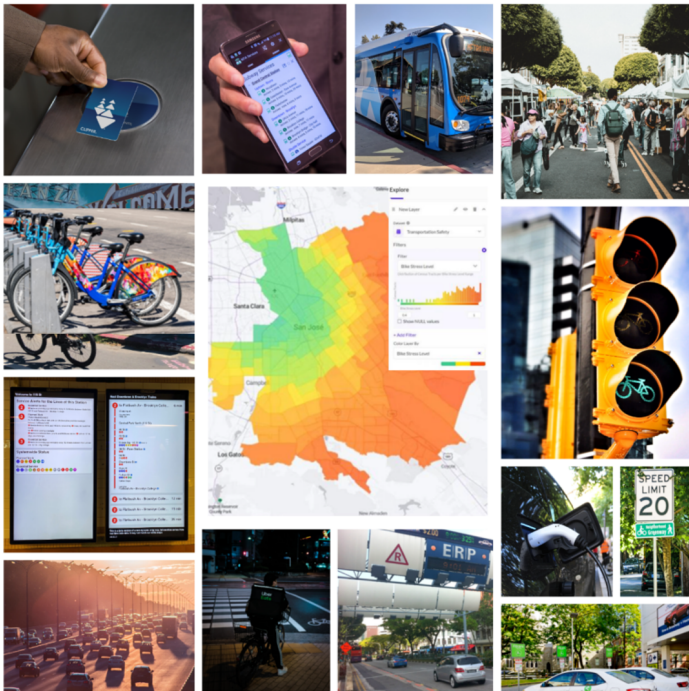


# DECISION SUPPORT SYSTEM



## GOAL AREAS OF MOVE SAN JOSE KPI REPORT



X





## Transportation Safety

### Bike Stress Level



*Index Score: 0-100; Lower = Better*

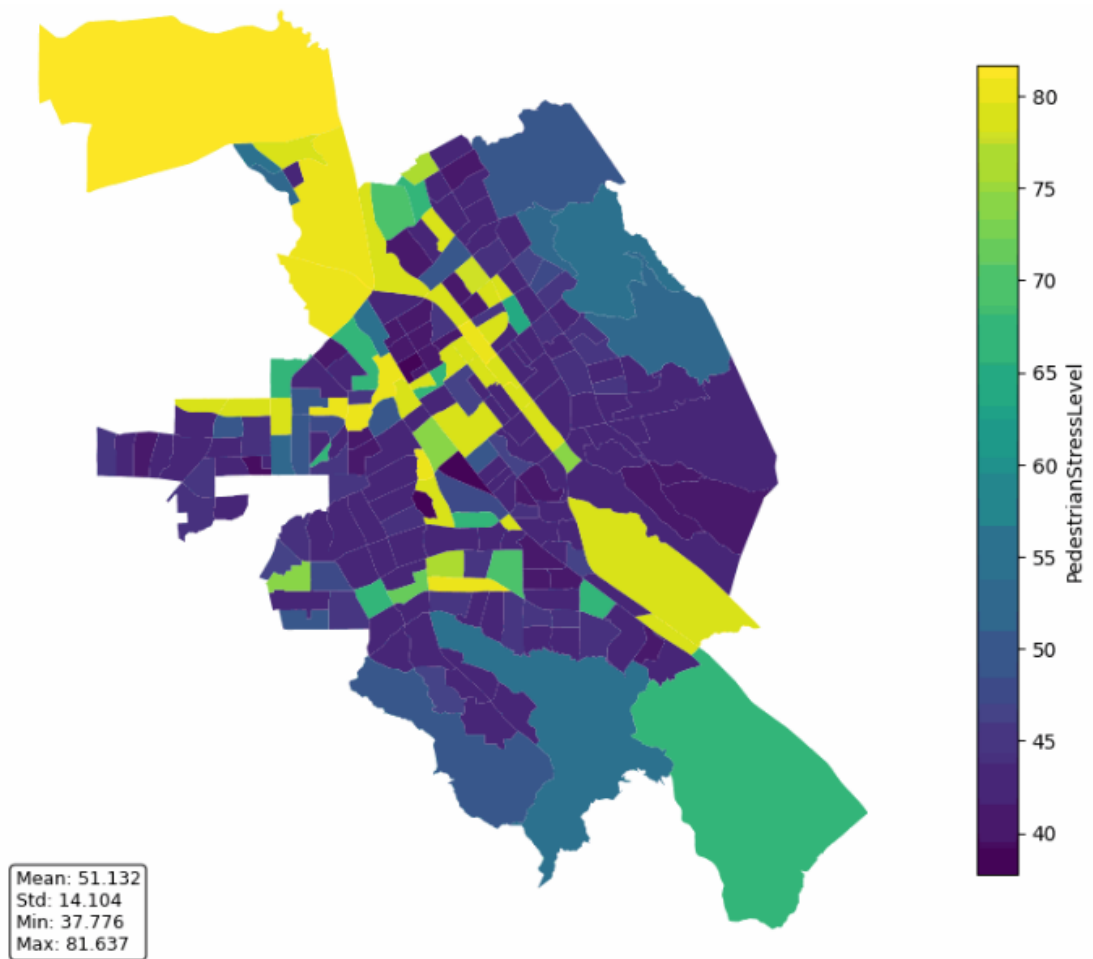
Bike Stress Level

*Mean: 47.172 | Std: 14.559 | Min: 25.000 | Max: 92.989 | Compute: 10.9s*



## Transportation Safety

### Pedestrian Stress Level



*Index Score: 0-100; Lower = Better*

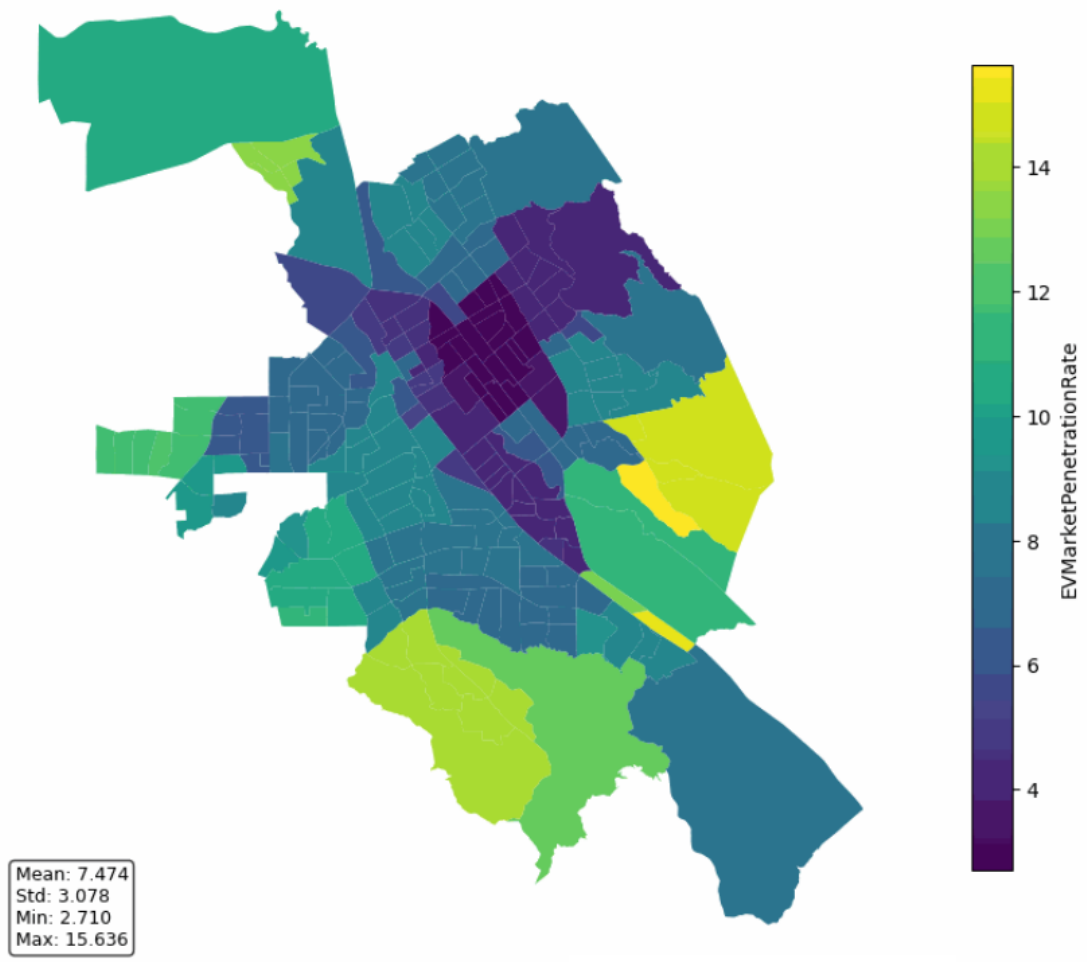
Pedestrian Stress Level

*Mean: 51.132 | Std: 14.104 | Min: 37.776 | Max: 81.637 | Compute: 95.2s*



## Clean the Air

### Electric Vehicle Adoption (EV Adoption)



Electric Vehicle Adoption

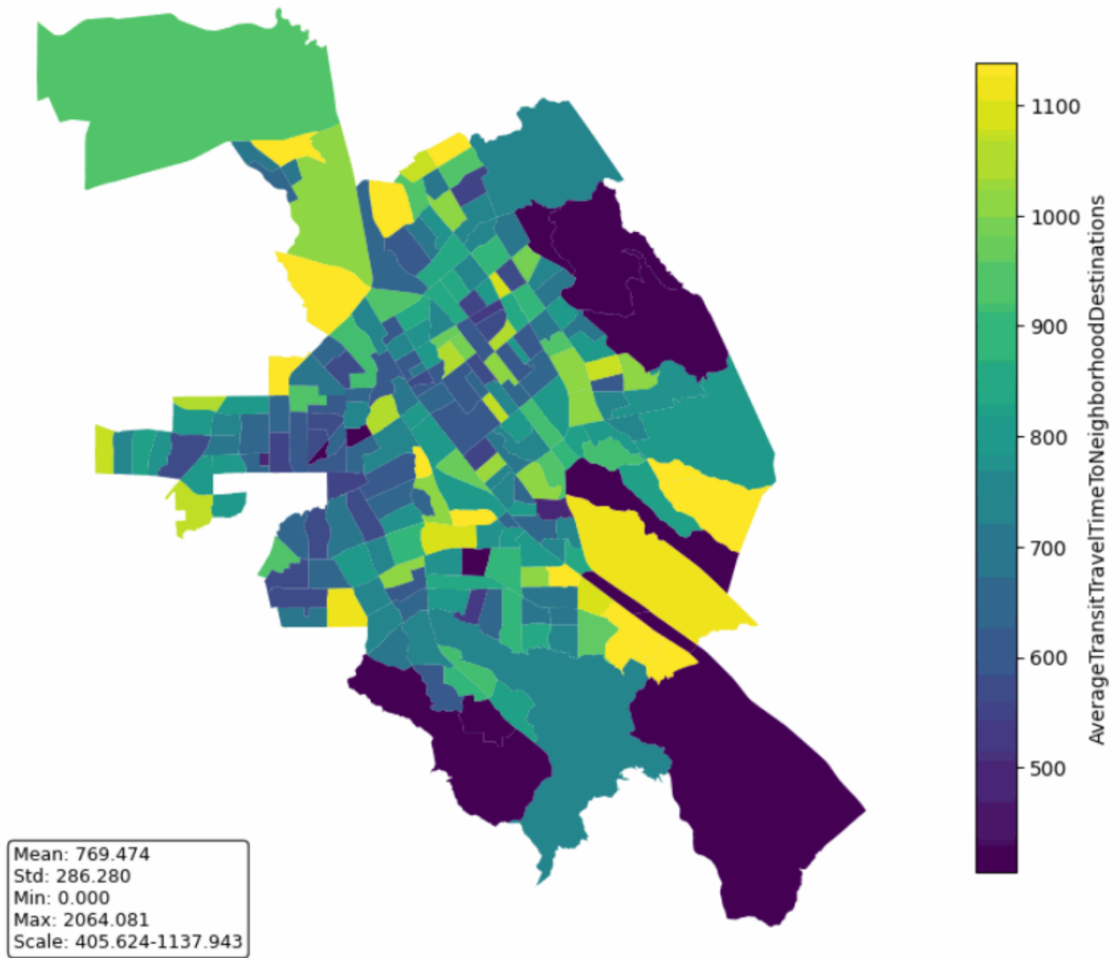
*Units: % of Total Vehicles*

*Mean: 7.474 | Std: 3.078 | Min: 2.710 | Max: 15.636 | Compute: 0.0s*



## Connected Neighborhoods

### Average Travel Time to Neighborhood Destinations by Transit



*Units: Seconds*

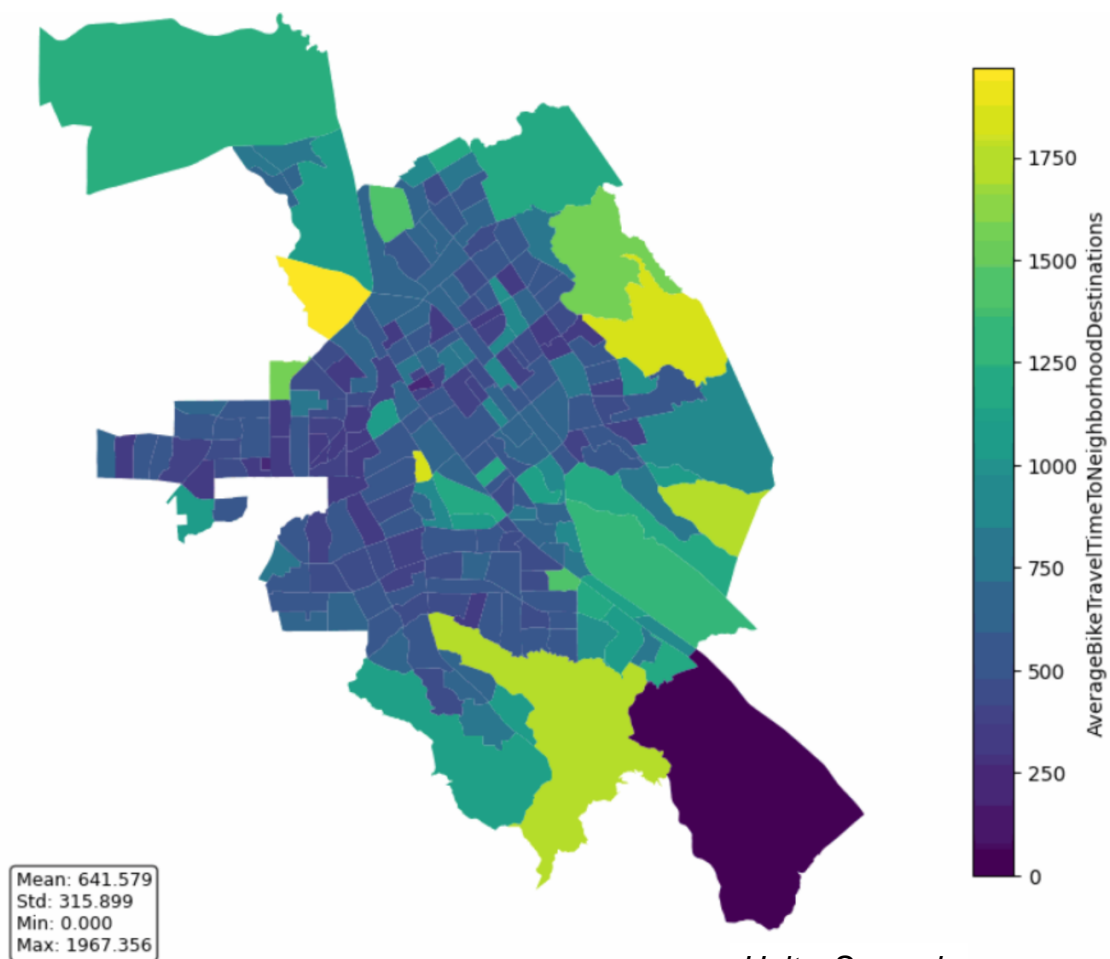
Average Travel Time to Neighborhood Destinations by Transit

*Mean: 769.474 | Std: 286.280 | Min: 0.000 | Max: 2064.081 | Compute: 137.7s*



## Connected Neighborhoods

### Average Travel Time to Neighborhood Destinations by Bike



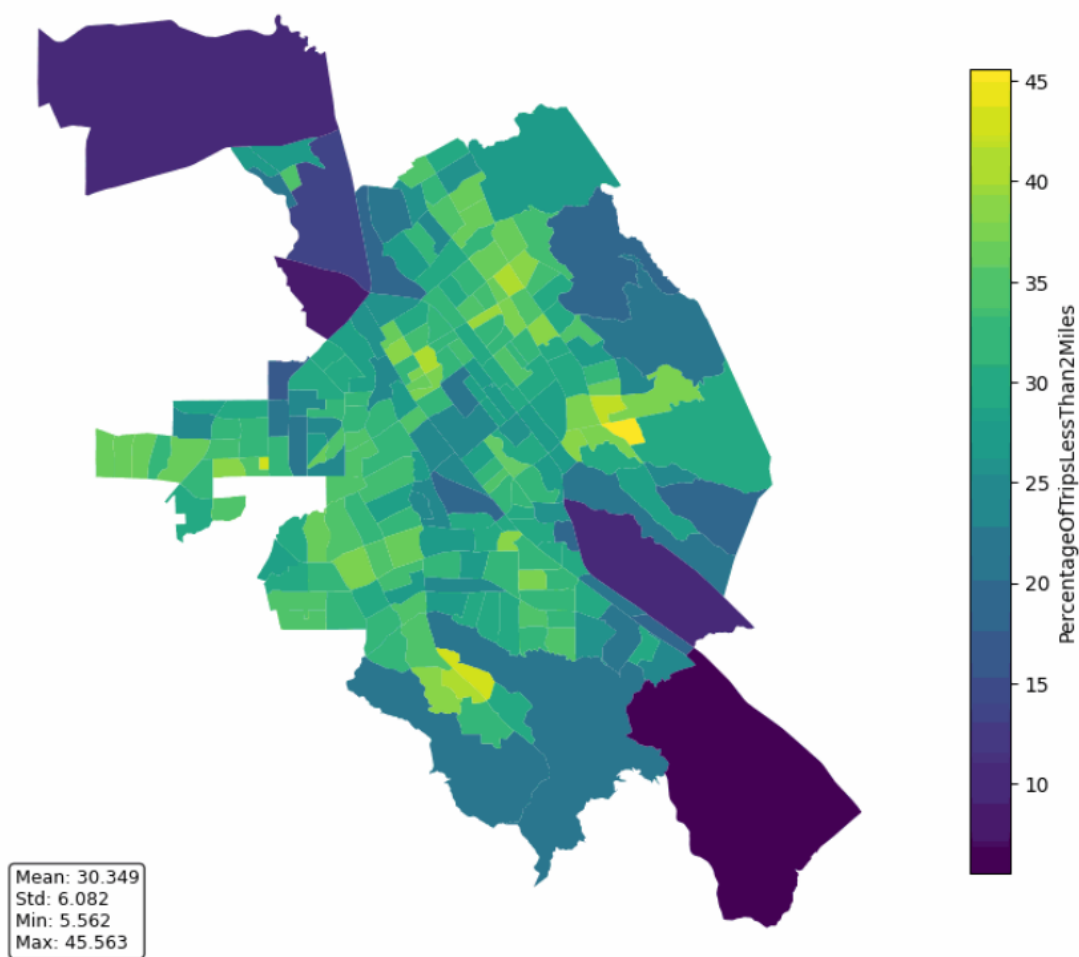
Average Travel Time to Neighborhood Destinations by Bike

*Mean: 641.579 | Std: 315.899 | Min: 0.000 | Max: 1967.356 | Compute: 160.5s*



## 20-Minute Neighborhoods

### Percentage of Trips Less Than 2 Miles

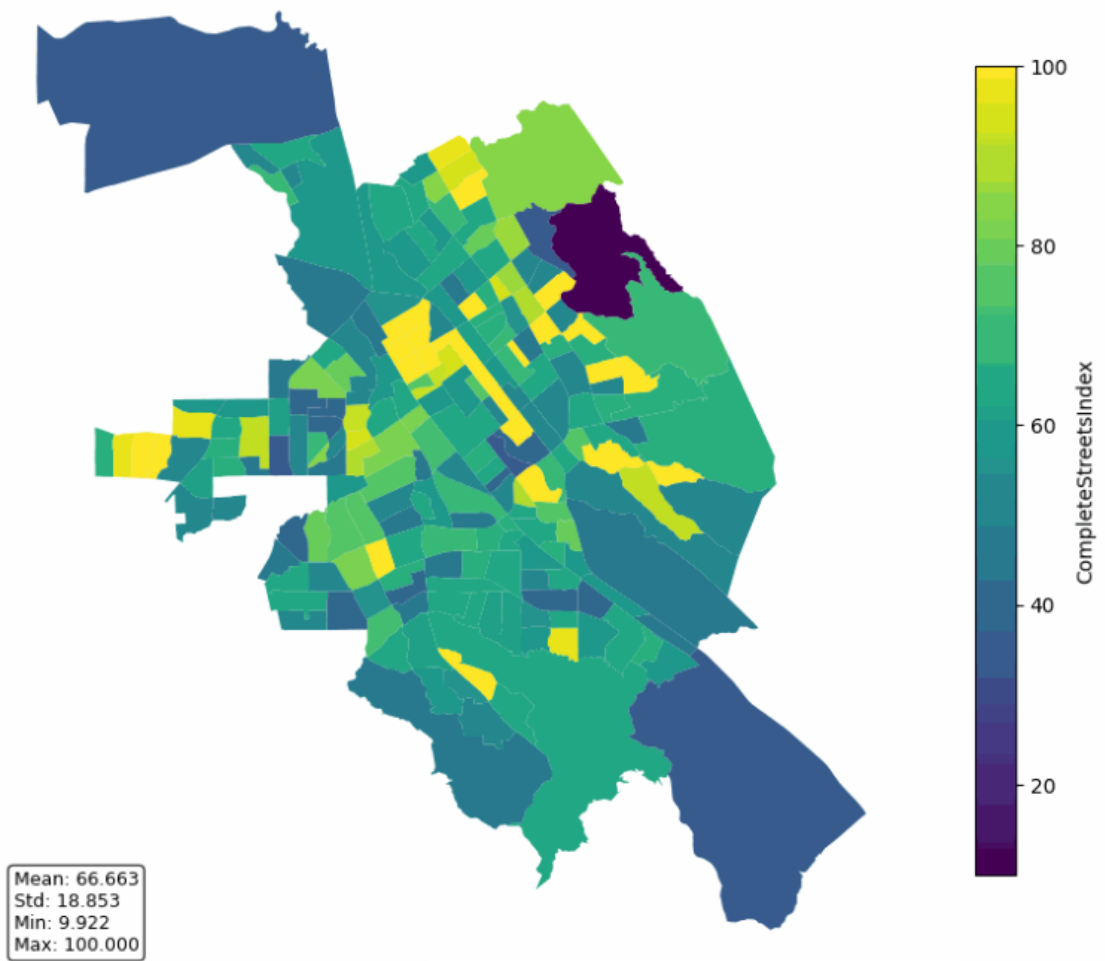


*Mean: 30.349 | Std: 6.082 | Min: 5.562 | Max: 45.563 | Compute: 0.0s*



## Enjoyable Transportation

### Complete Streets Index



*Index Score: 0-100; Higher = Better*

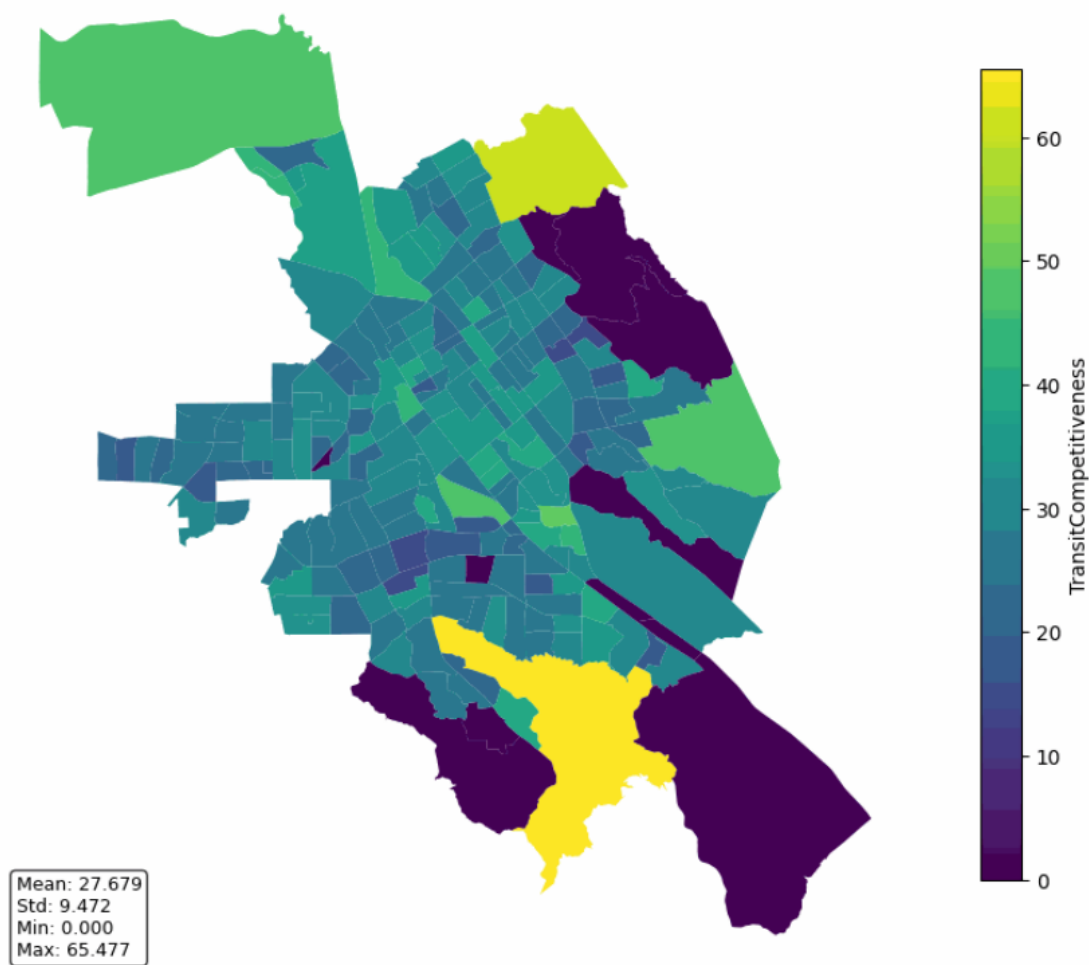
Complete Streets Index

*Mean: 66.663 | Std: 18.853 | Min: 9.922 | Max: 100.000 | Compute: 109.1s*



## Enjoyable Transportation

### Transit Competitiveness



Transit Competitiveness

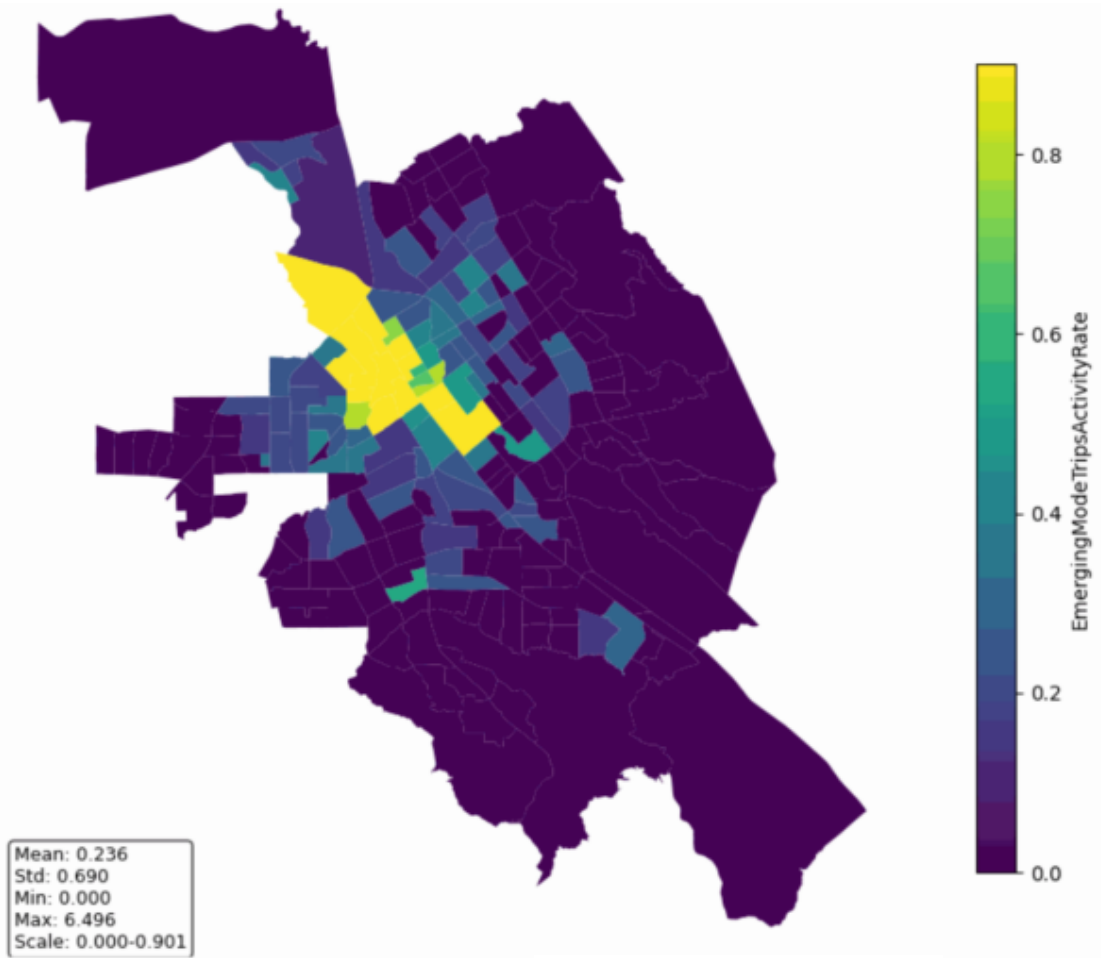
Units: % of Additional transit travel time  
(Lower = Better)

Mean: 27.679 | Std: 9.472 | Min: 0.000 | Max: 65.477 | Compute: 143.4s



## PLAN FOR THE FUTURE

### Emerging Modes Activity Rate



Emerging Modes Trips Activity Rate

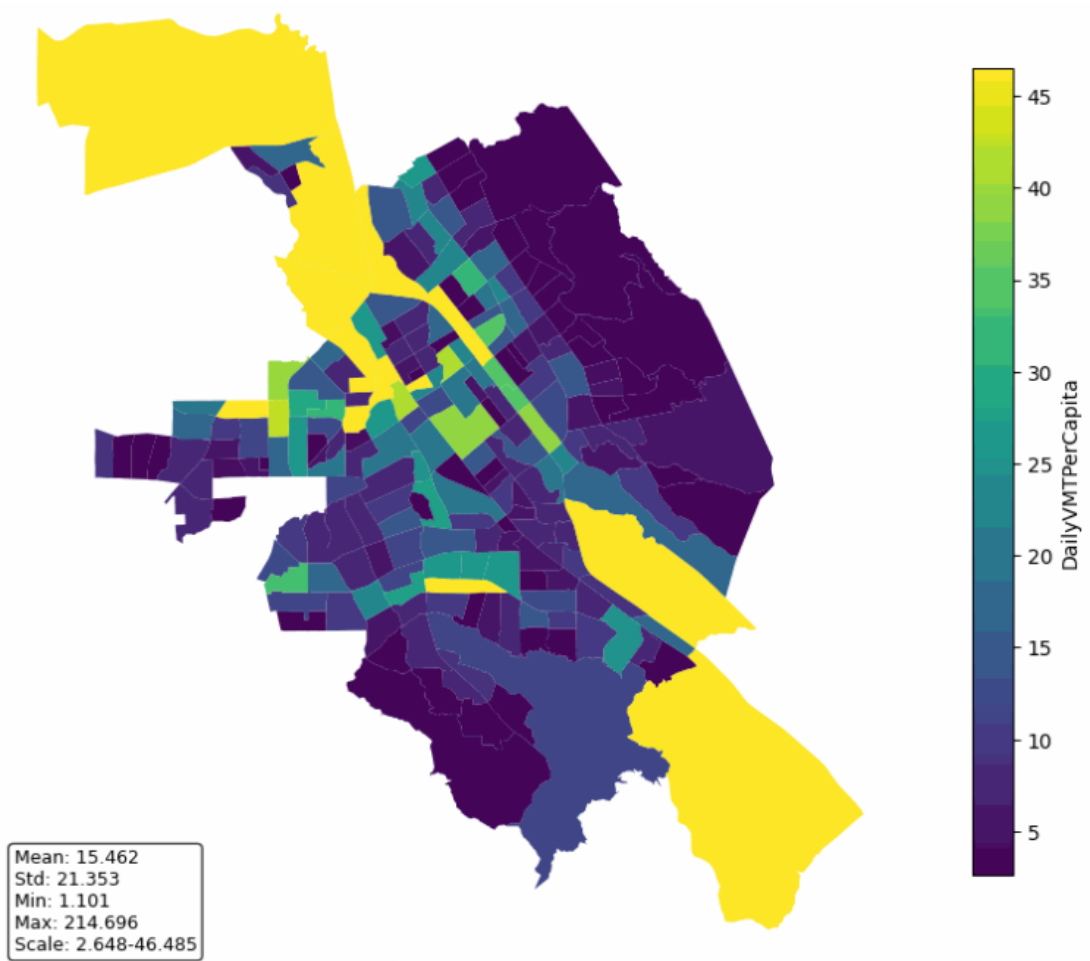
*Units: Trip Miles per Capita*

*Mean: 0.236 | Std: 0.690 | Min: 0.000 | Max: 6.496 | Compute: 0.0s*



## Less Driving

### Daily VMT Per Capita



*Units: Vehicle Miles Travel per Capita*

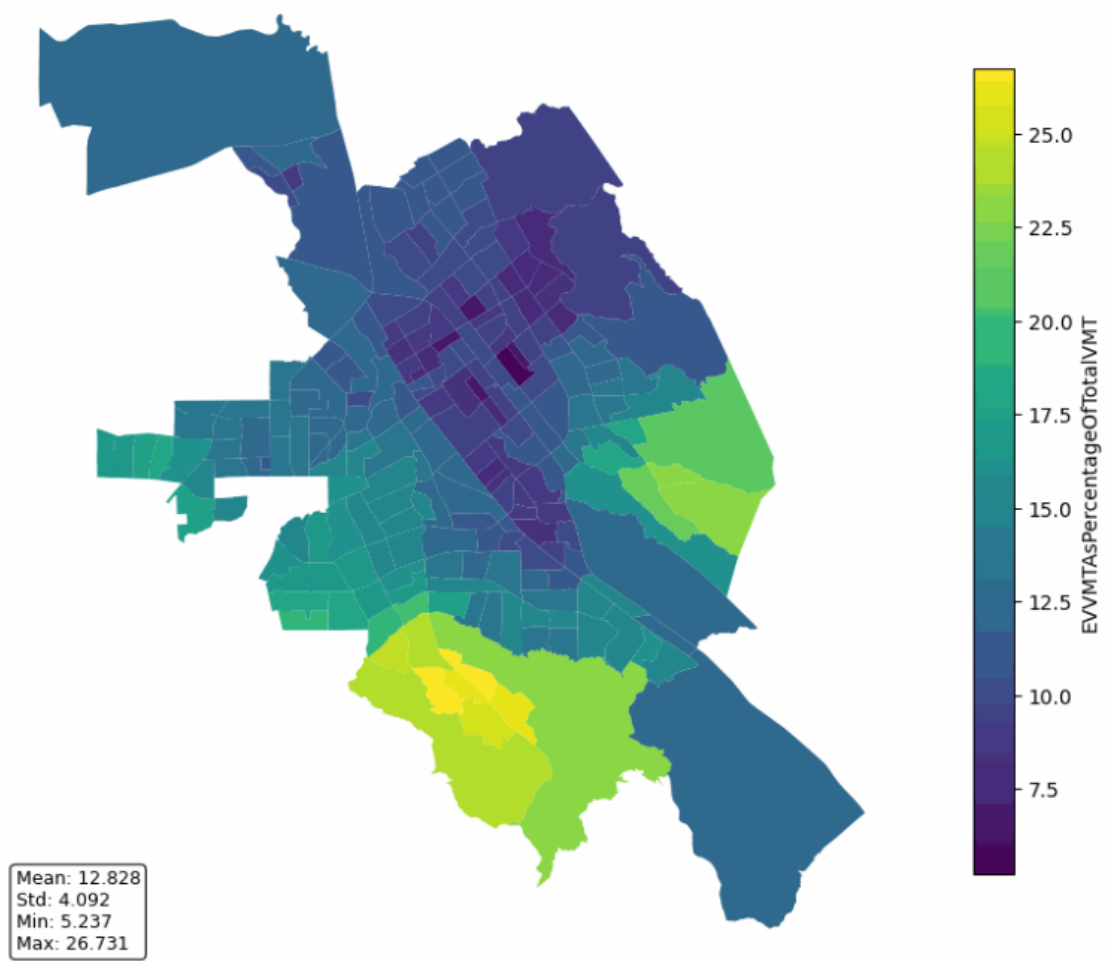
Daily VMT Per Capita

*Mean: 15.462 | Std: 21.353 | Min: 1.101 | Max: 214.696 | Compute: 0.0s*



## Less Driving

### EV VMT Per Capita



Units: EV Vehicle Miles Travel per Capita

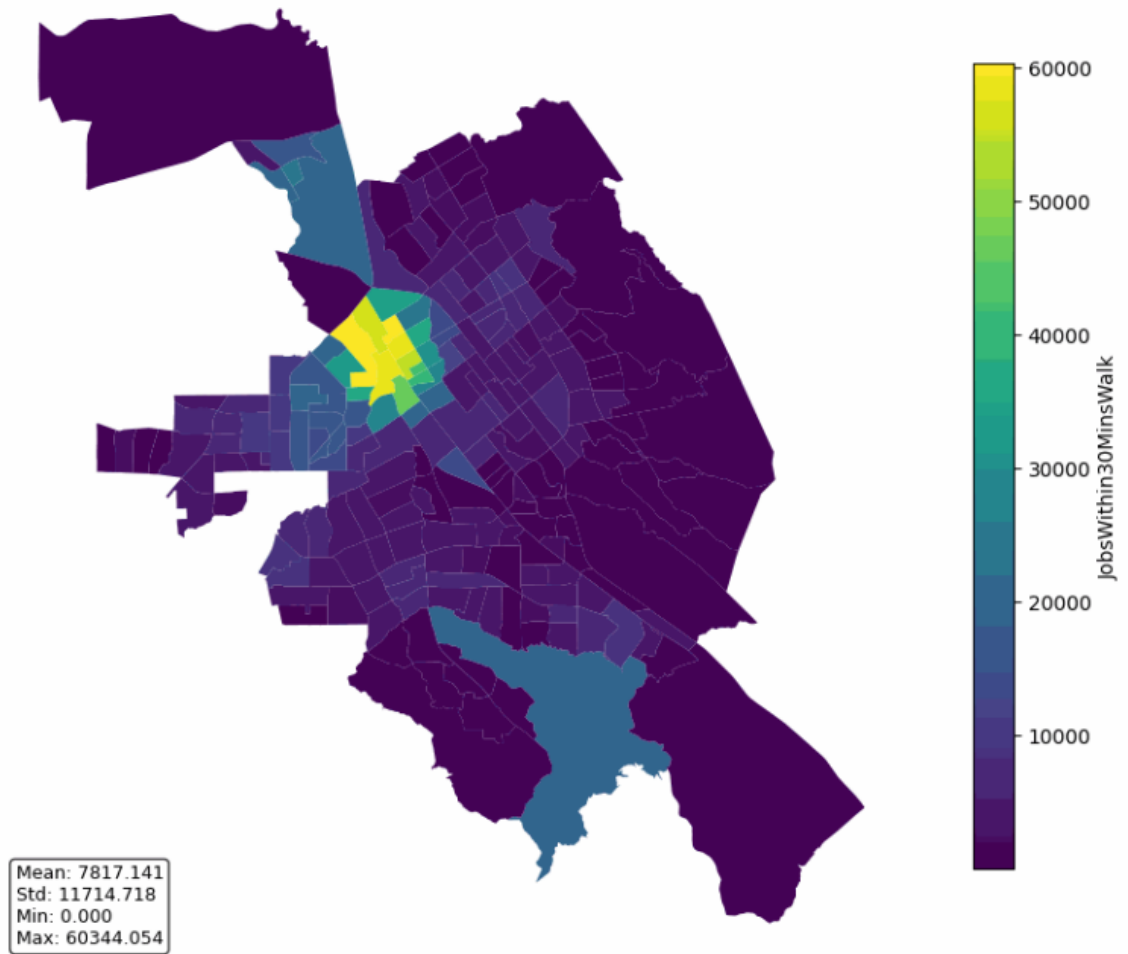
EV VMT Per Capita

Mean: 12.828 | Std: 4.092 | Min: 5.237 | Max: 26.731 | Compute: 0.0s



## Move the Economy

### Jobs Within A 30-Minute Walk



Jobs Within A 30-Minute Walk

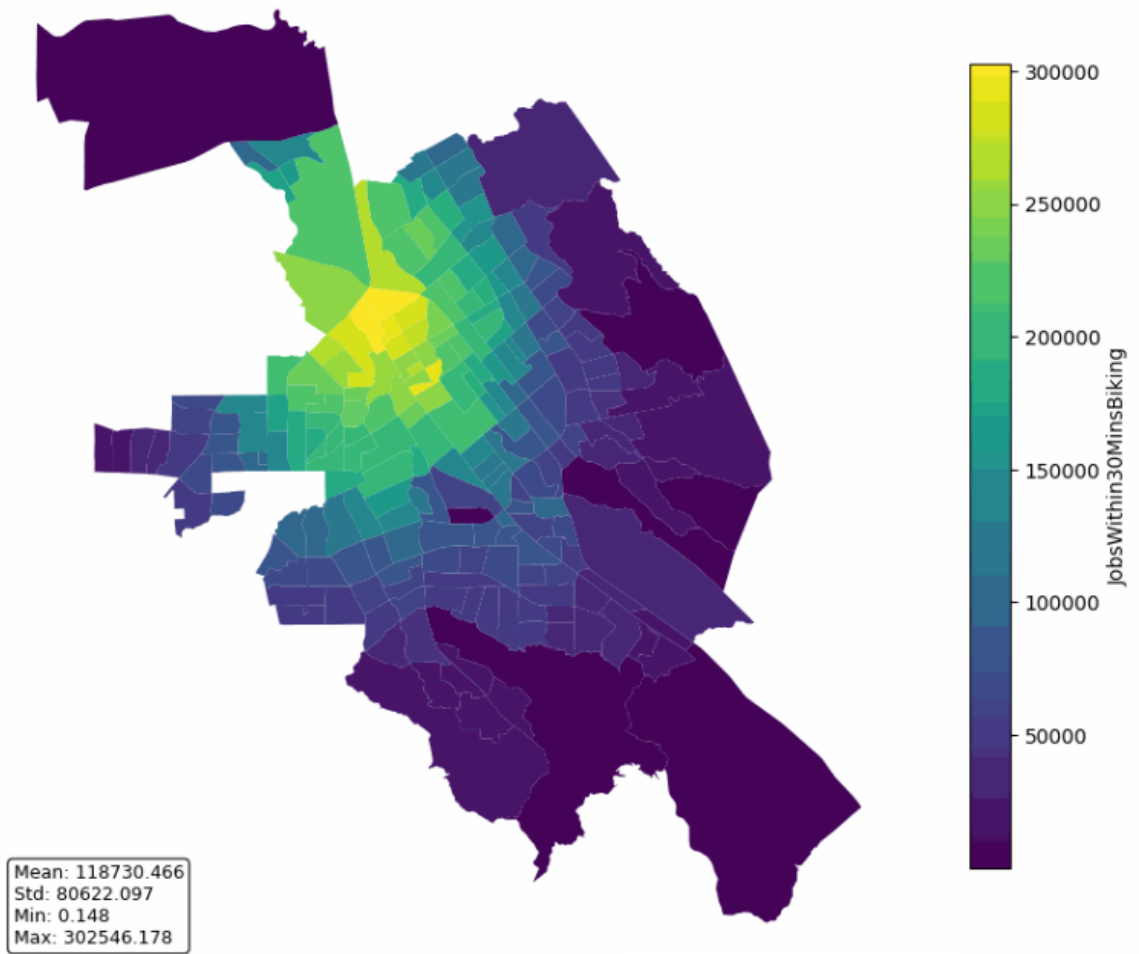
*Units: Number of Jobs*

*Mean: 7817.141 | Std: 11714.718 | Min: 0.000 | Max: 60344.054 | Compute: 23.6s*



## Move the Economy

### Jobs Within A 30-Minute Bike Ride



Jobs Within A 30-Minute Bike Ride

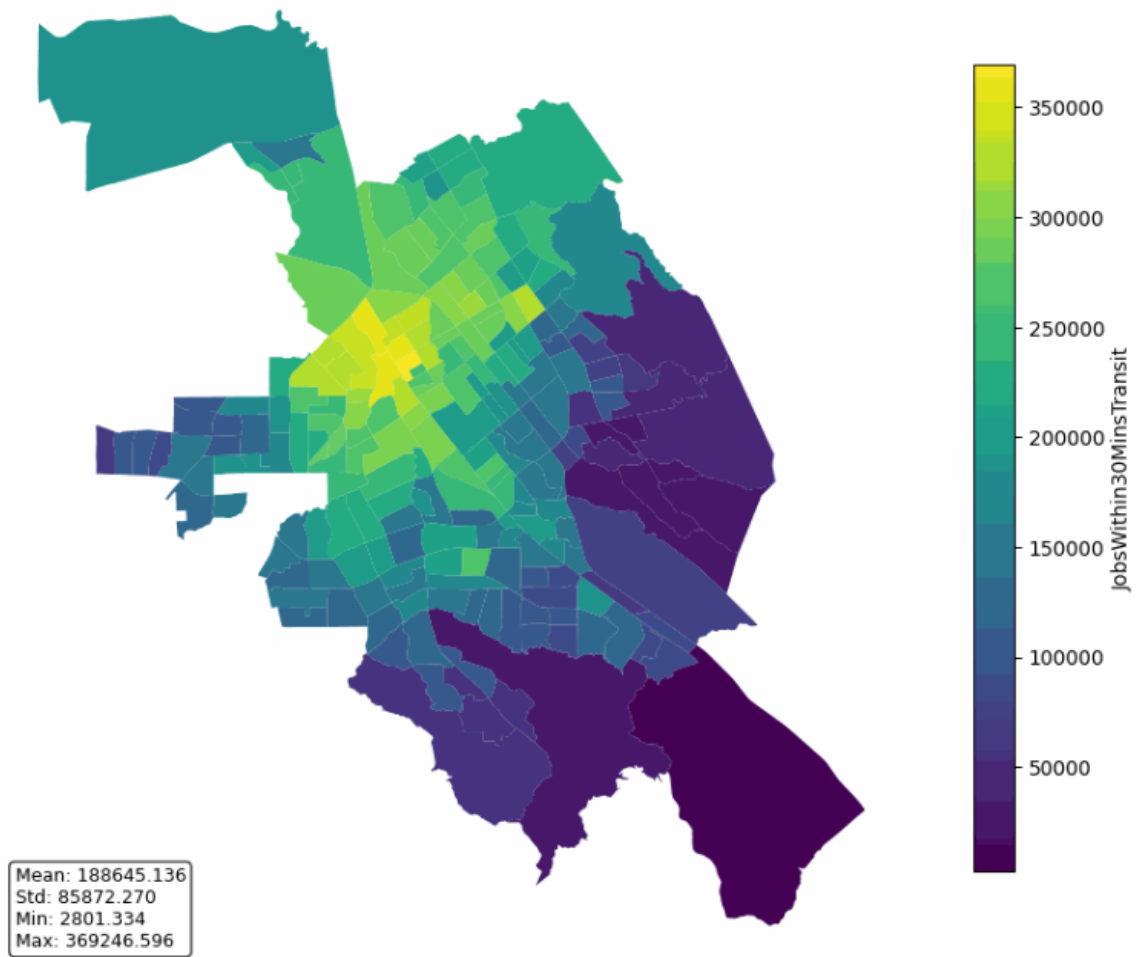
*Units: Number of Jobs*

*Mean: 118730.466 | Std: 80622.097 | Min: 0.148 | Max: 302546.178 | Compute: 55.5s*



## Move the Economy

### Jobs Within A 30-Minute Transit Ride



*Units: Number of Jobs*

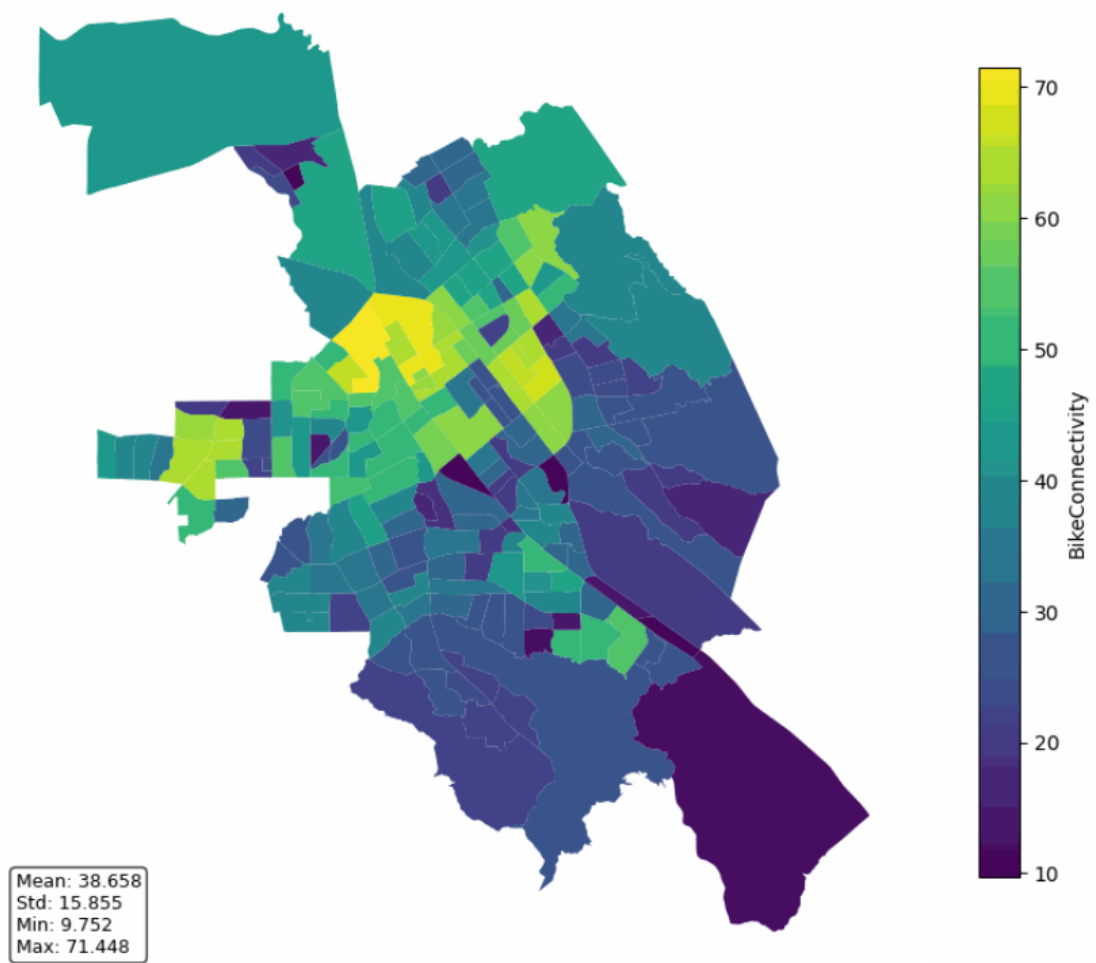
Jobs Within A 30-Minute Transit Ride

*Mean: 188645.136 | Std: 85872.270 | Min: 2801.334 | Max: 369246.596 | Compute: 53.9s*



## Access for All

### Bike Connectivity



*Index Score: 0-100; Higher = Better*

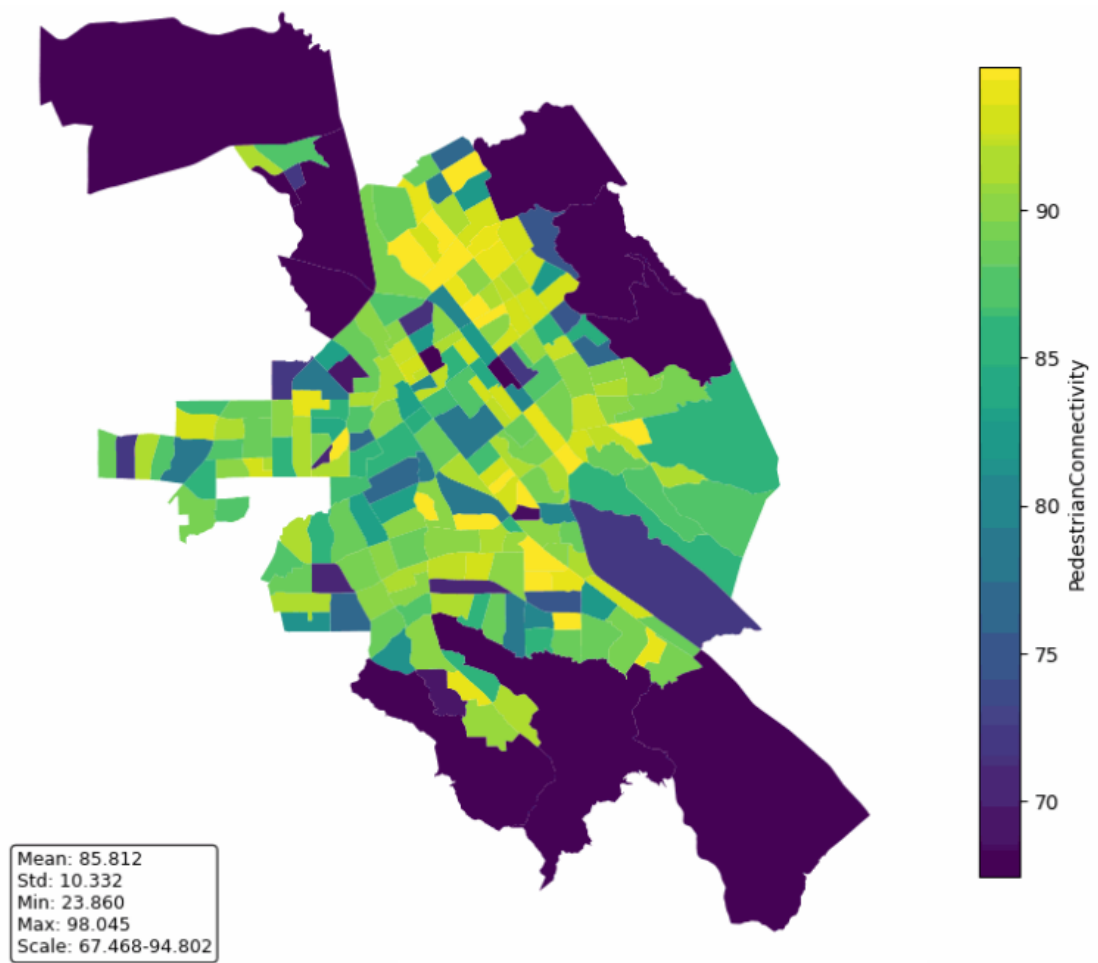
**Bike Connectivity**

*Mean: 38.658 | Std: 15.855 | Min: 9.752 | Max: 71.448 | Compute: 539.9s*



## Access for All

### Pedestrian Connectivity



*Index Score: 0-100; Higher = Better*

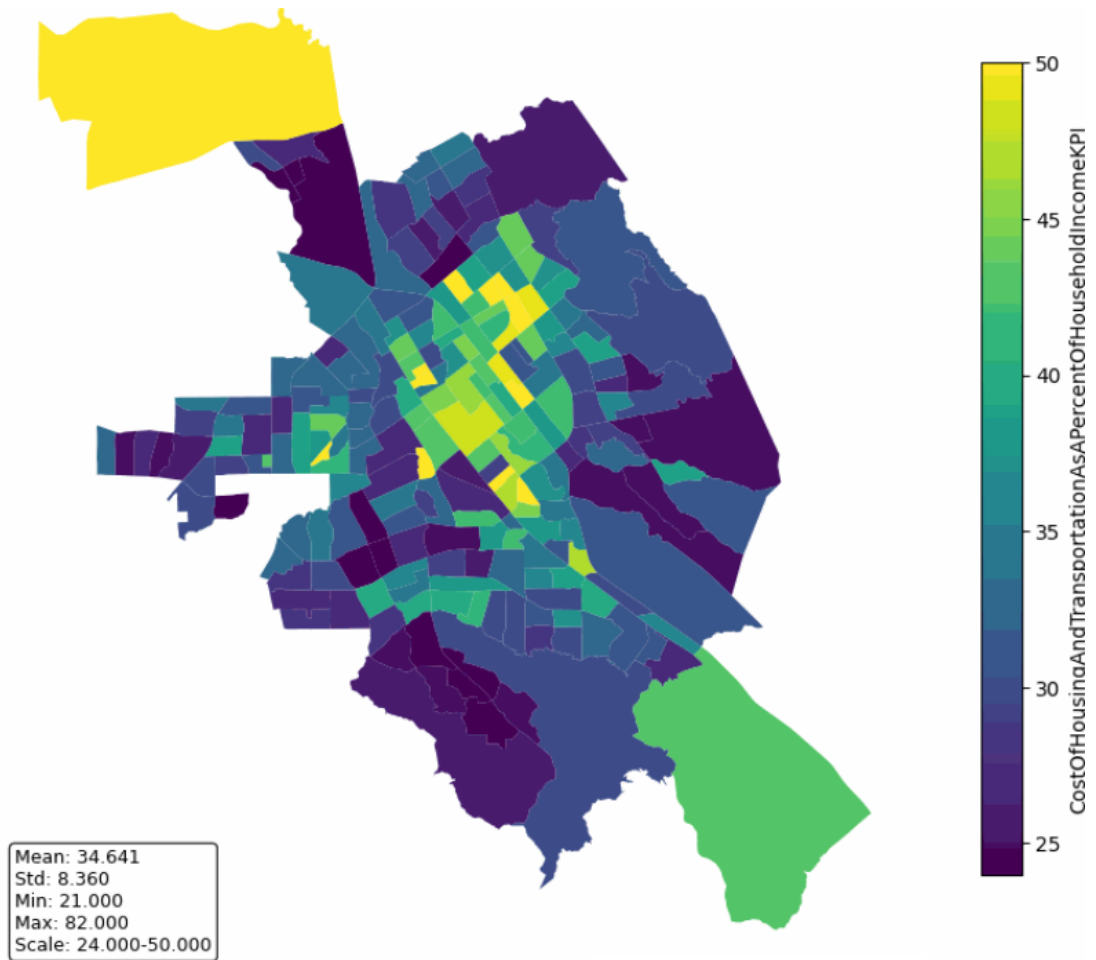
Pedestrian Connectivity

*Mean: 85.812 | Std: 10.332 | Min: 23.860 | Max: 98.045 | Compute: 88.6s*



**Access for All**

# Cost of Housing & Transportation as a Percent of Household Income



*Units: % of Total costs*

Cost of Housing & Transportation as a Percent of Household Income

*Mean: 34.641 | Std: 8.360 | Min: 21.000 | Max: 82.000 | Compute: 0.0s*