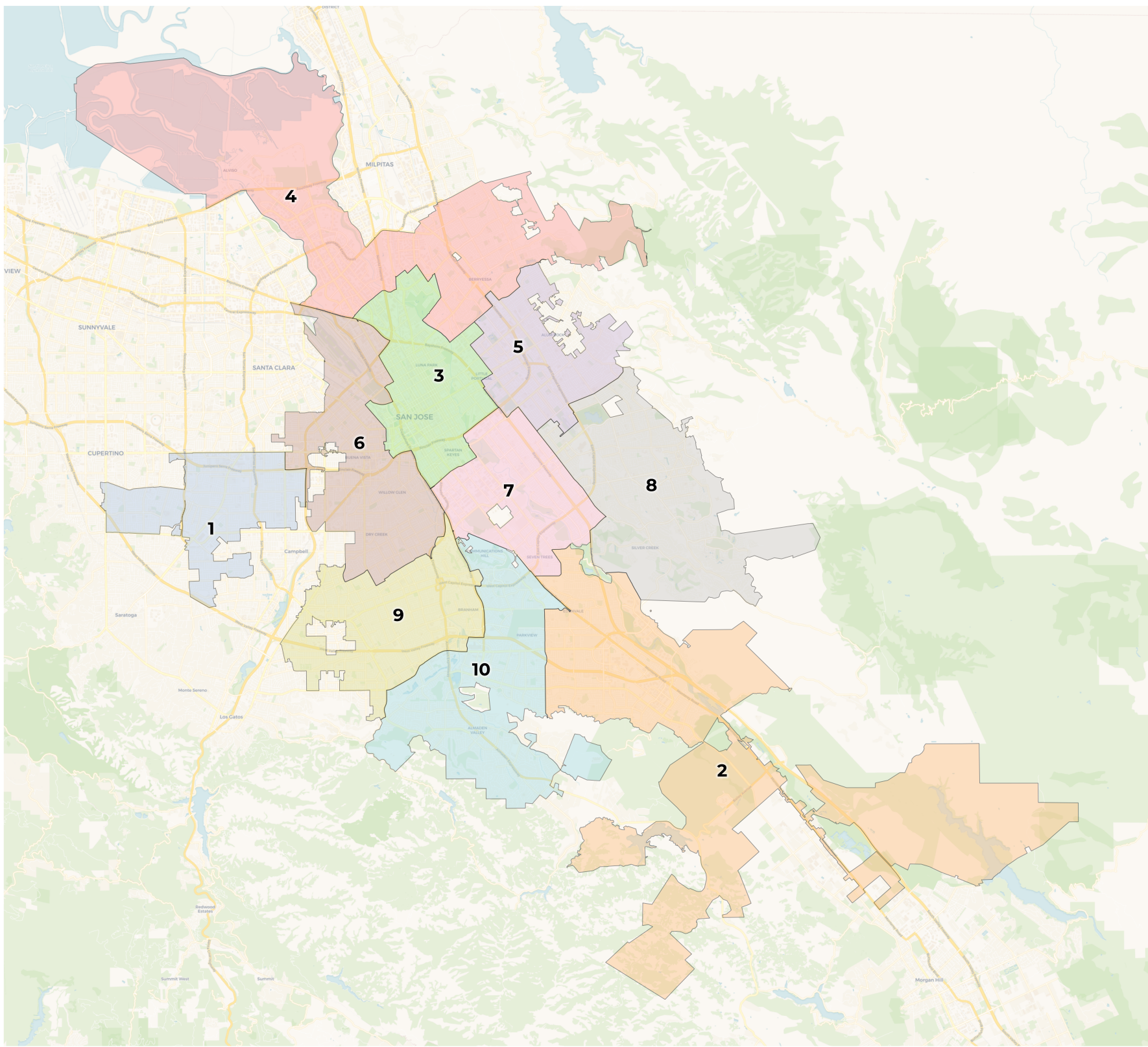


REDISTRICTING PARTNERS

City of San Jose
Community Map 5.0 ID 81222



2020 Census

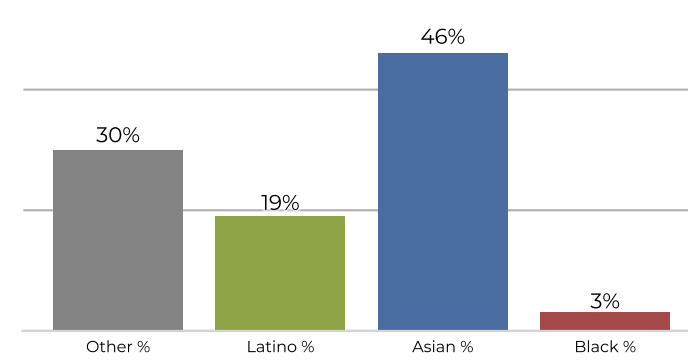
	1	2	3	4	5	6	7	8	9	10
Population	99,305	99,336	105,452	105,723	105,516	103,054	98,483	98,329	101,477	98,770
Deviation	-2,239	-2,208	3,908	4,179	3,972	1,510	-3,061	-3,215	-67	-2,774
Deviation %	-2.2%	-2.2%	3.8%	4.1%	3.9%	1.5%	-3.0%	-3.2%	-0.1%	-2.7%
Other	30,704	30,116	25,876	18,613	9,137	49,854	8,797	15,056	51,691	43,074
Other %	30.9%	30.3%	24.5%	17.6%	8.7%	48.4%	8.9%	15.3%	50.9%	43.6%
Latino	19,373	34,168	47,584	16,769	58,830	30,777	44,722	21,448	22,947	20,944
Latino %	19.5%	34.4%	45.1%	15.9%	55.8%	29.9%	45.4%	21.8%	22.6%	21.2%
Asian	46,197	31,673	27,948	68,203	35,644	18,940	42,592	59,776	23,988	32,207
Asian %	46.5%	31.9%	26.5%	64.5%	33.8%	18.4%	43.2%	60.8%	23.6%	32.6%
Black	3,031	3,379	4,044	2,138	1,905	3,483	2,372	2,049	2,851	2,545
Black %	3.1%	3.4%	3.8%	2.0%	1.8%	3.4%	2.4%	2.1%	2.8%	2.6%

Citizen Voting Age Population (CVAP)

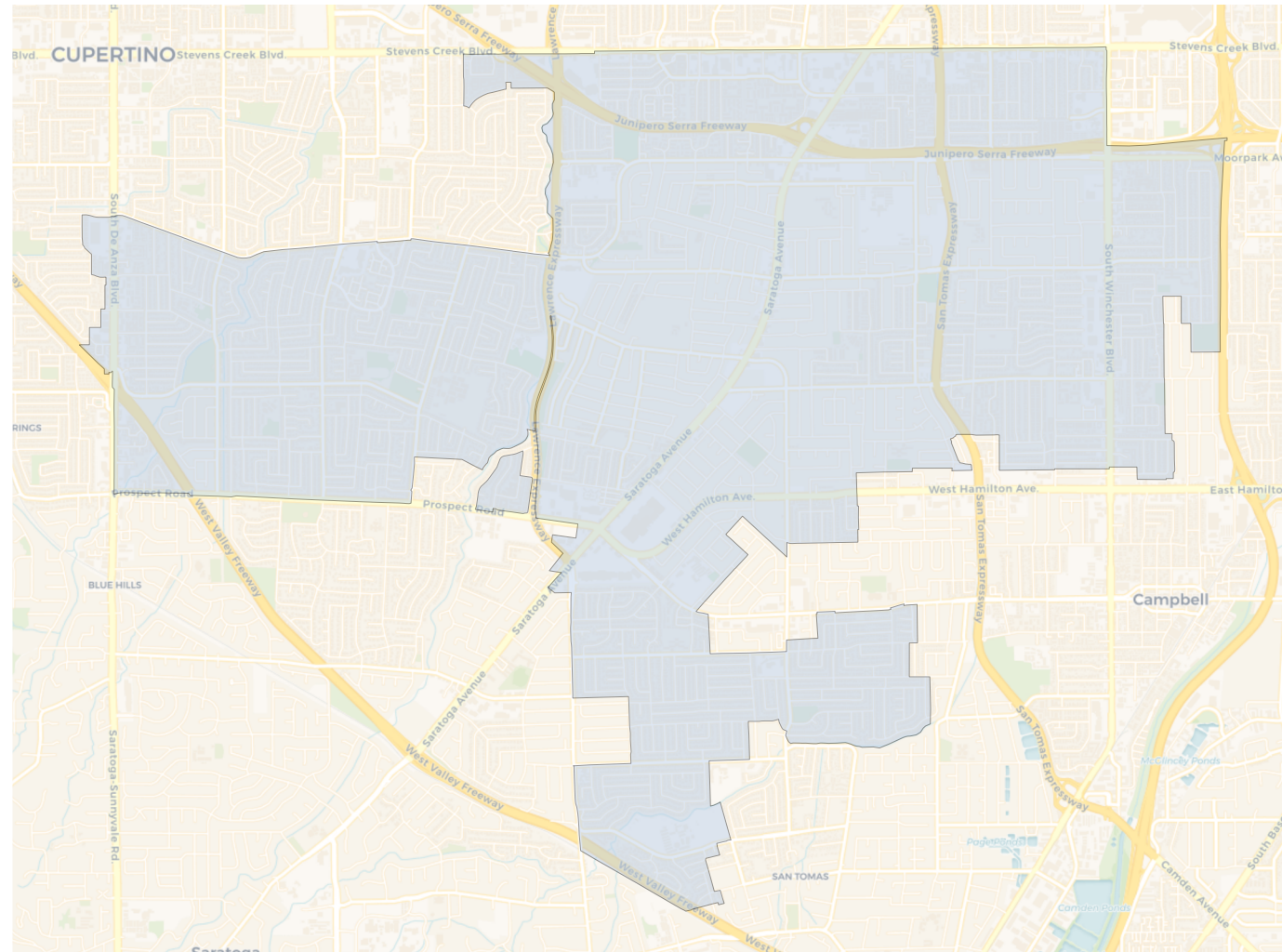
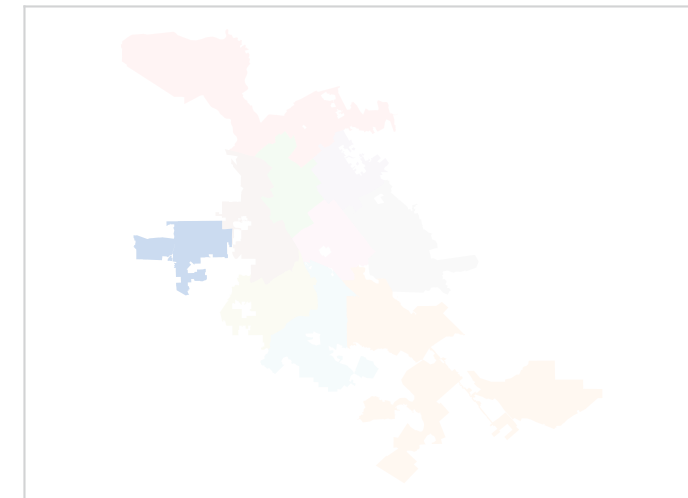
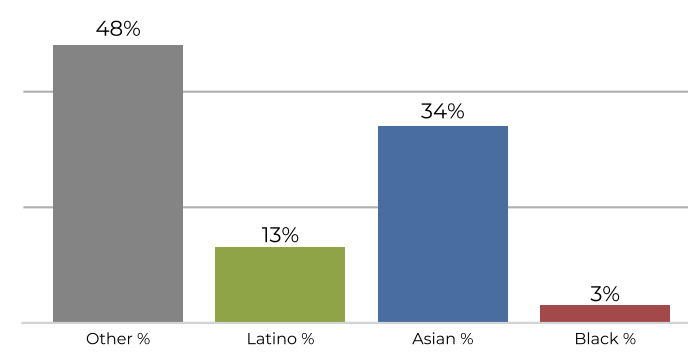
	1	2	3	4	5	6	7	8	9	10
Total CVAP	56,734	62,787	60,757	60,445	62,384	68,938	56,866	68,061	66,376	65,956
Other CVAP	27,333	25,607	20,959	14,423	8,427	41,840	7,564	13,991	42,617	35,450
Other CVAP %	48.2%	40.8%	34.5%	23.9%	13.5%	60.7%	13.3%	20.6%	64.2%	53.7%
Latino CVAP	7,866	17,893	21,522	9,902	28,777	15,121	20,043	14,788	10,863	10,672
Latino CVAP %	13.9%	28.5%	35.4%	16.4%	46.1%	21.9%	35.2%	21.7%	16.4%	16.2%
Asian CVAP	19,586	17,065	15,296	34,382	23,599	9,026	27,833	37,241	10,957	17,416
Asian CVAP %	34.5%	27.2%	25.2%	56.9%	37.8%	13.1%	48.9%	54.7%	16.5%	26.4%
Black CVAP	1,949	2,222	2,981	1,738	1,582	2,951	1,427	2,041	1,939	2,418
Black CVAP %	3.4%	3.5%	4.9%	2.9%	2.5%	4.3%	2.5%	3.0%	2.9%	3.7%

District 1

2020 Census



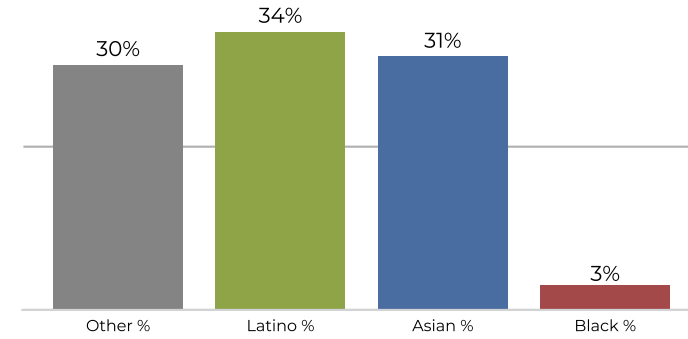
Citizen Voting Age Population



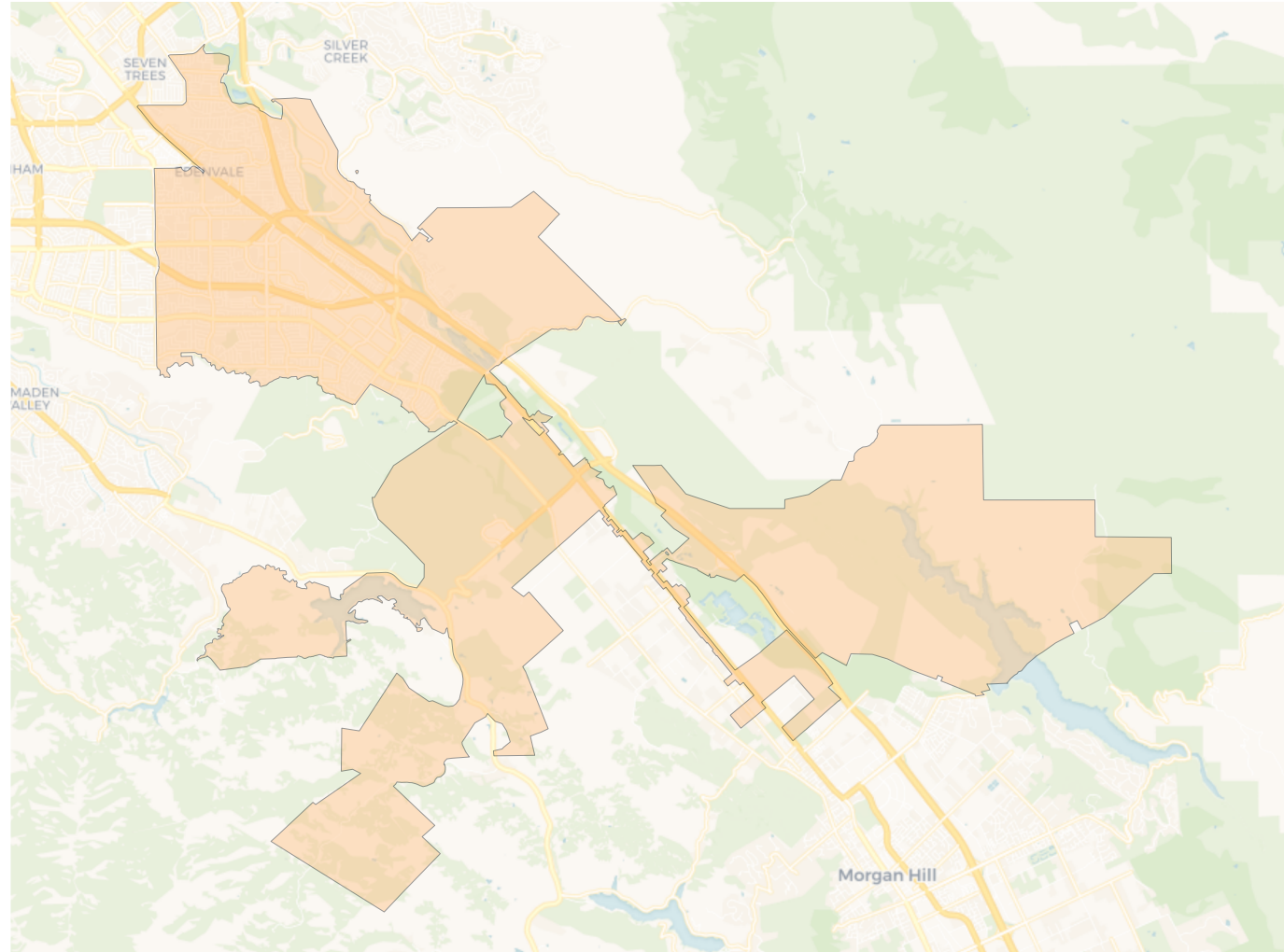
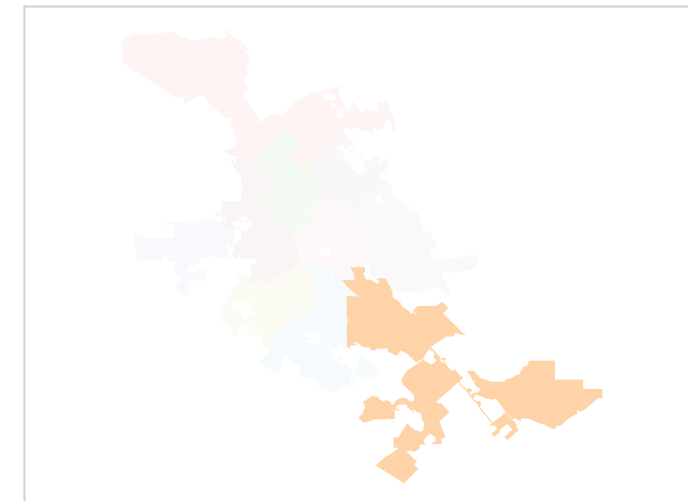
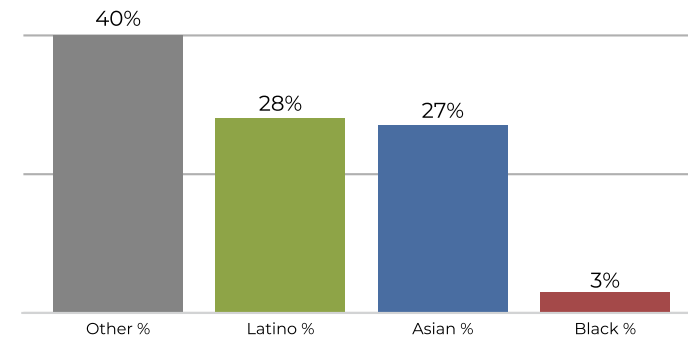
Population	Deviation	Deviation %	Other	Other %	Latino	Latino %	Asian	Asian %	Black	Black %
99,305	-2,239	-2.2%	30,704	30.9%	19,373	19.5%	46,197	46.5%	3,031	3.1%
Total CVAP	Other CVAP	Other CVAP %	Latino CVAP	Latino CVAP %	Asian CVAP	Asian CVAP %	Black CVAP	Black CVAP %		
56,734	27,333	48.2%	7,866	13.9%	19,586	34.5%	1,949	3.4%		

District 2

2020 Census



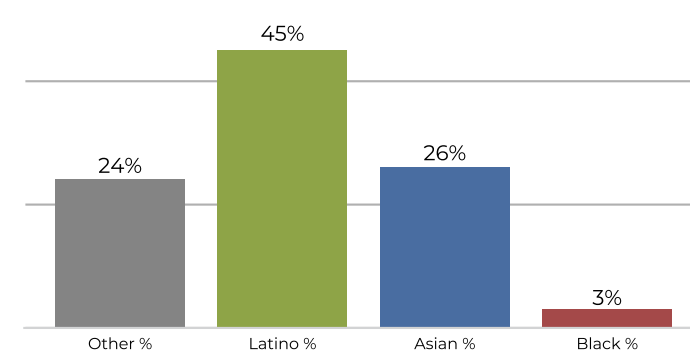
Citizen Voting Age Population



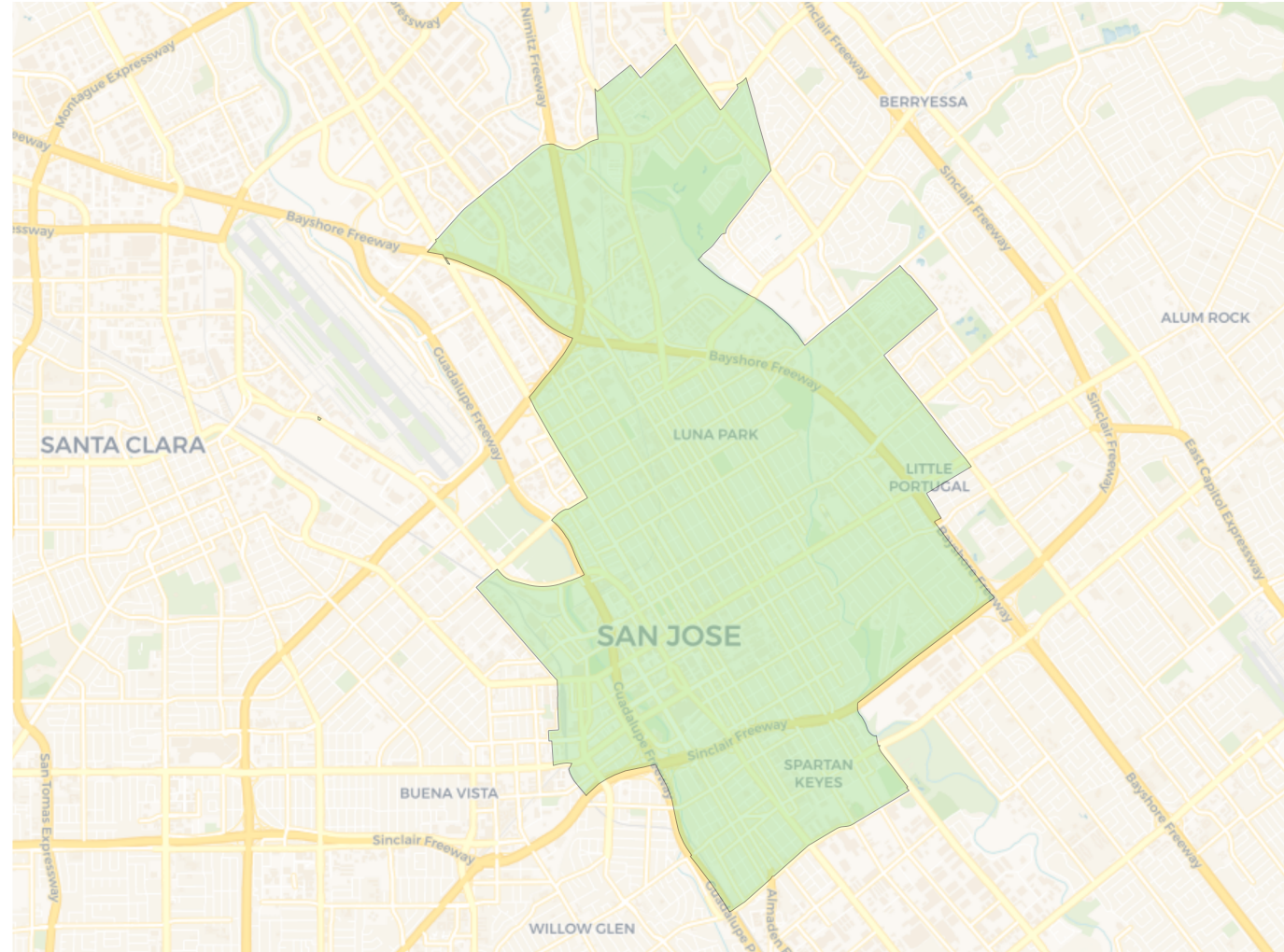
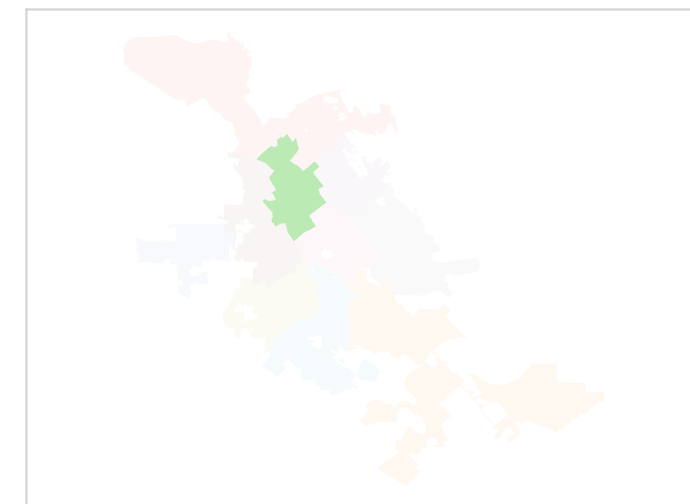
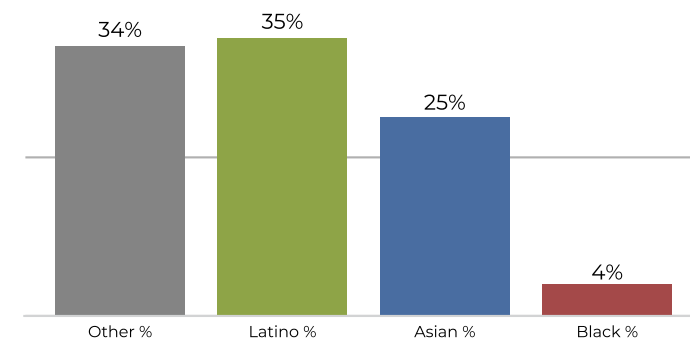
Population	Deviation	Deviation %	Other	Other %	Latino	Latino %	Asian	Asian %	Black	Black %
99,336	-2,208	-2.2%	30,116	30.3%	34,168	34.4%	31,673	31.9%	3,379	3.4%
Total CVAP	Other CVAP	Other CVAP %	Latino CVAP	Latino CVAP %	Asian CVAP	Asian CVAP %	Black CVAP	Black CVAP %		
62,787	25,607	40.8%	17,893	28.5%	17,065	27.2%	2,222	3.5%		

District 3

2020 Census



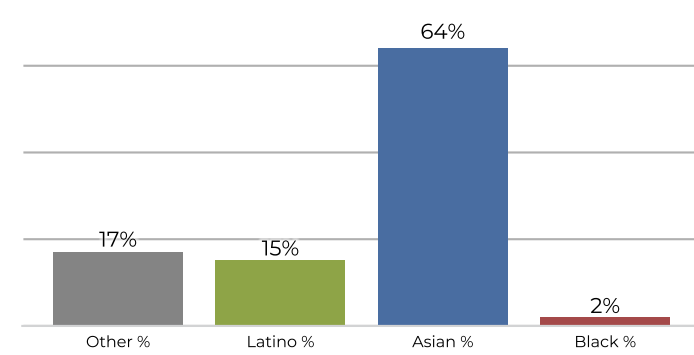
Citizen Voting Age Population



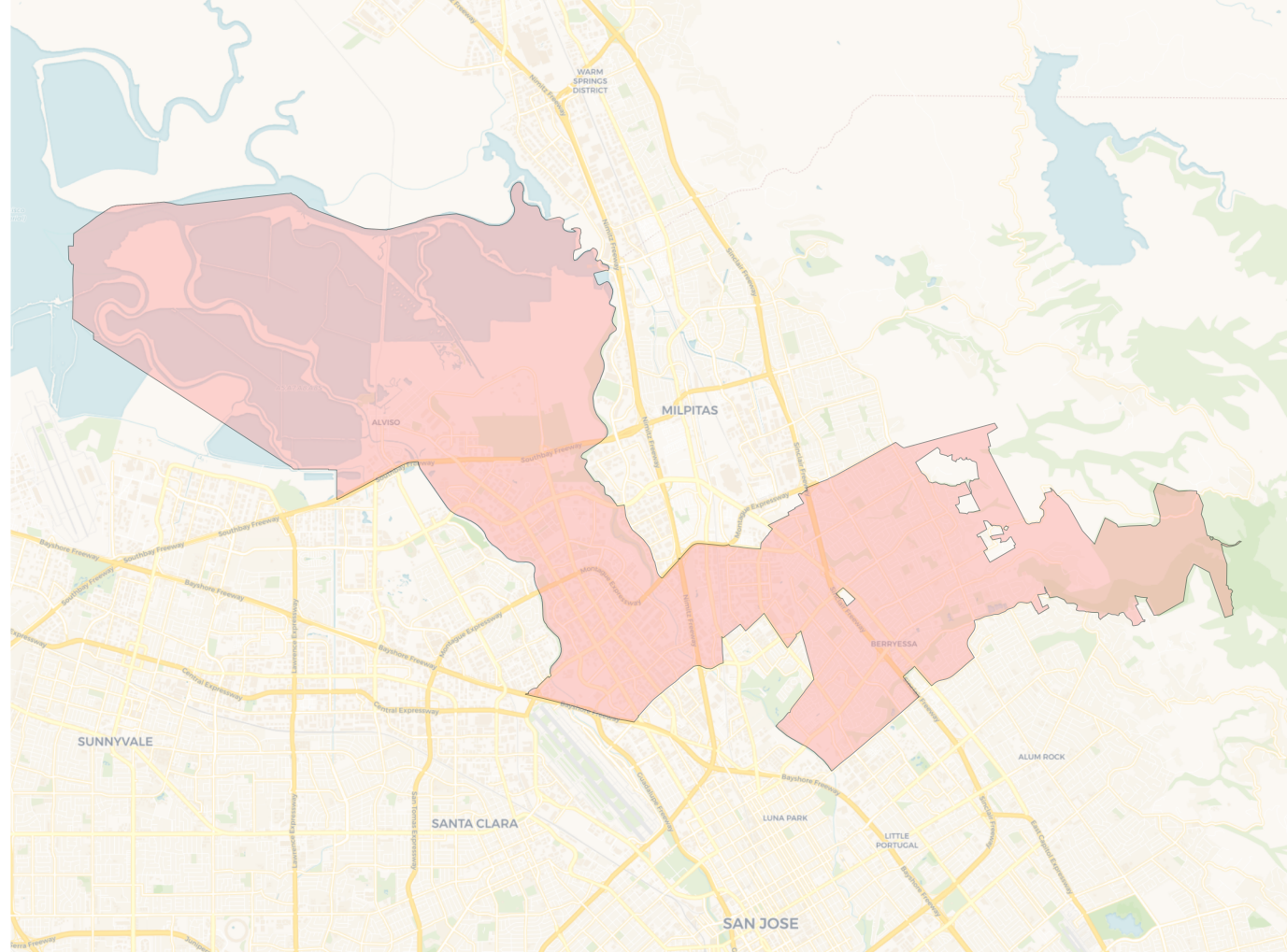
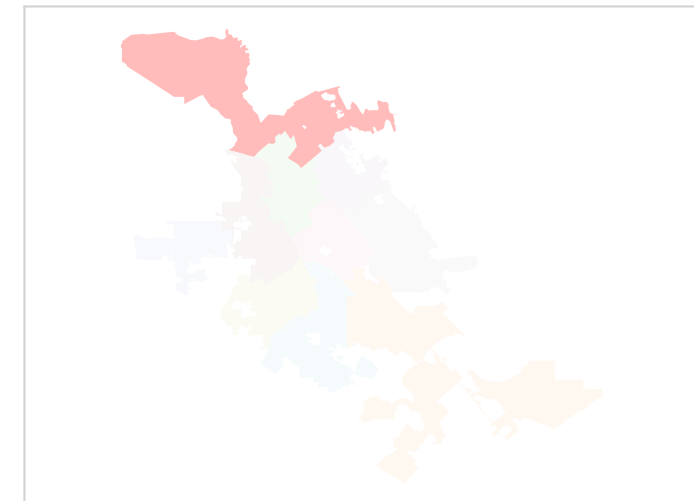
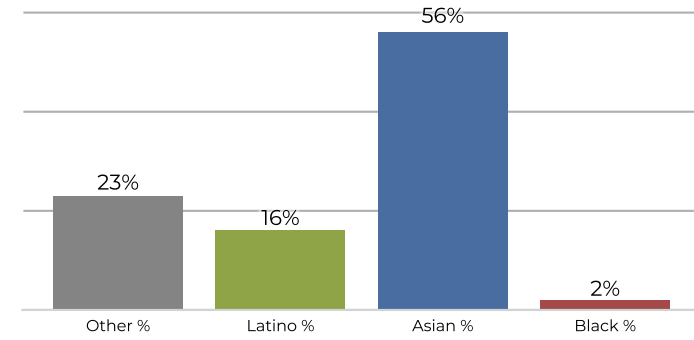
Population	Deviation	Deviation %	Other	Other %	Latino	Latino %	Asian	Asian %	Black	Black %
105,452	3,908	3.8%	25,876	24.5%	47,584	45.1%	27,948	26.5%	4,044	3.8%
Total CVAP	Other CVAP	Other CVAP %	Latino CVAP	Latino CVAP %	Asian CVAP	Asian CVAP %	Black CVAP	Black CVAP %		
60,757	20,959	34.5%	21,522	35.4%	15,296	25.2%	2,981	4.9%		

District 4

2020 Census



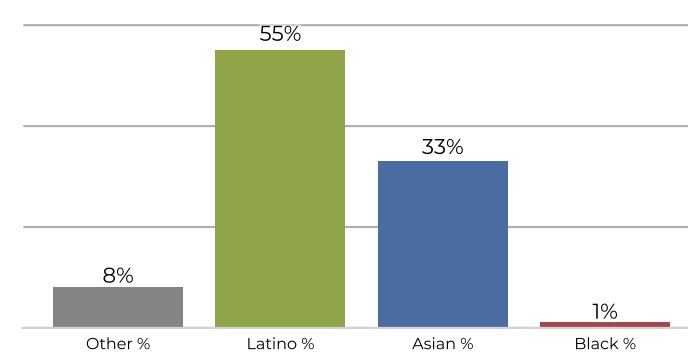
Citizen Voting Age Population



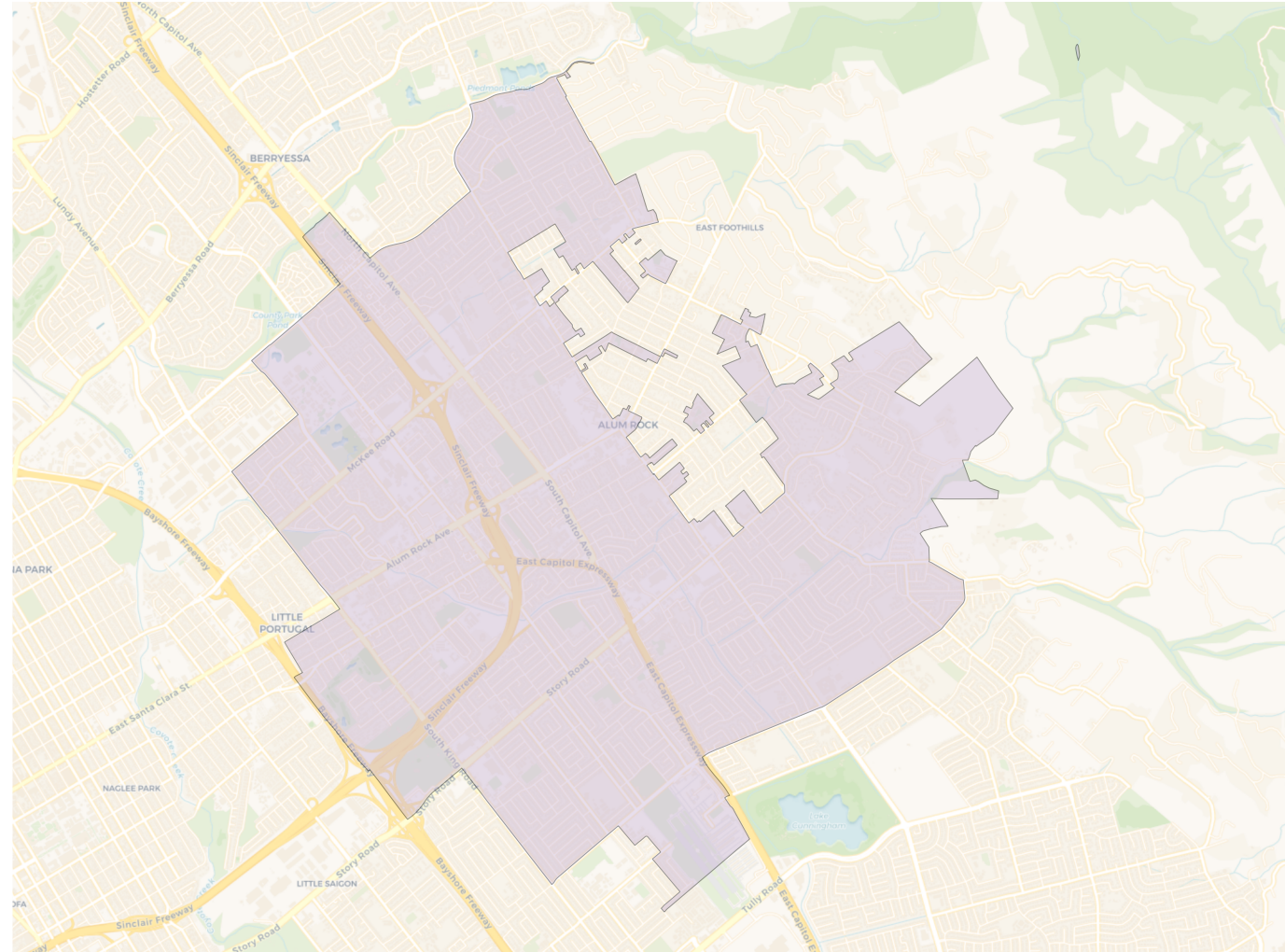
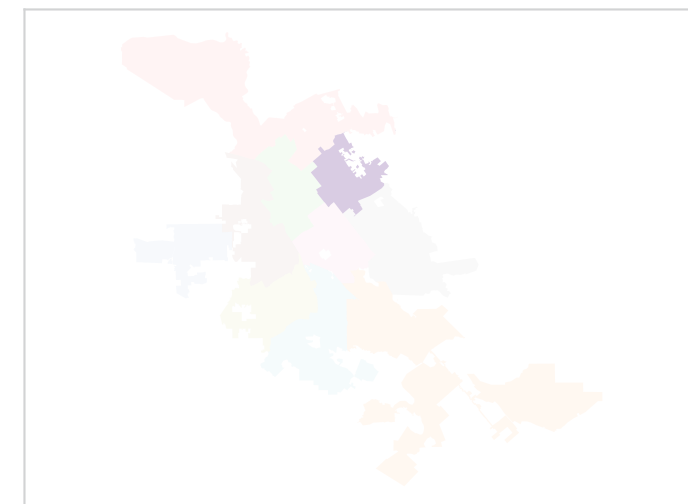
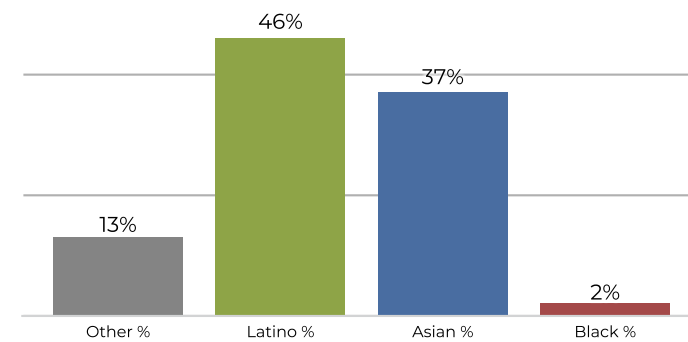
Population	Deviation	Deviation %	Other	Other %	Latino	Latino %	Asian	Asian %	Black	Black %
105,723	4,179	4.1%	18,613	17.6%	16,769	15.9%	68,203	64.5%	2,138	2.0%
Total CVAP	Other CVAP	Other CVAP %	Latino CVAP	Latino CVAP %	Asian CVAP	Asian CVAP %	Black CVAP	Black CVAP %		
60,445	14,423	23.9%	9,902	16.4%	34,382	56.9%	1,738	2.9%		

District 5

2020 Census



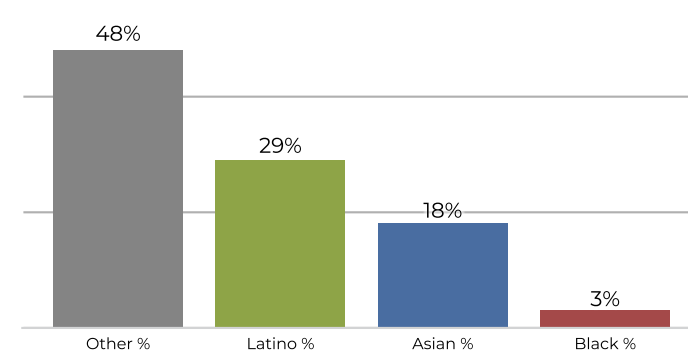
Citizen Voting Age Population



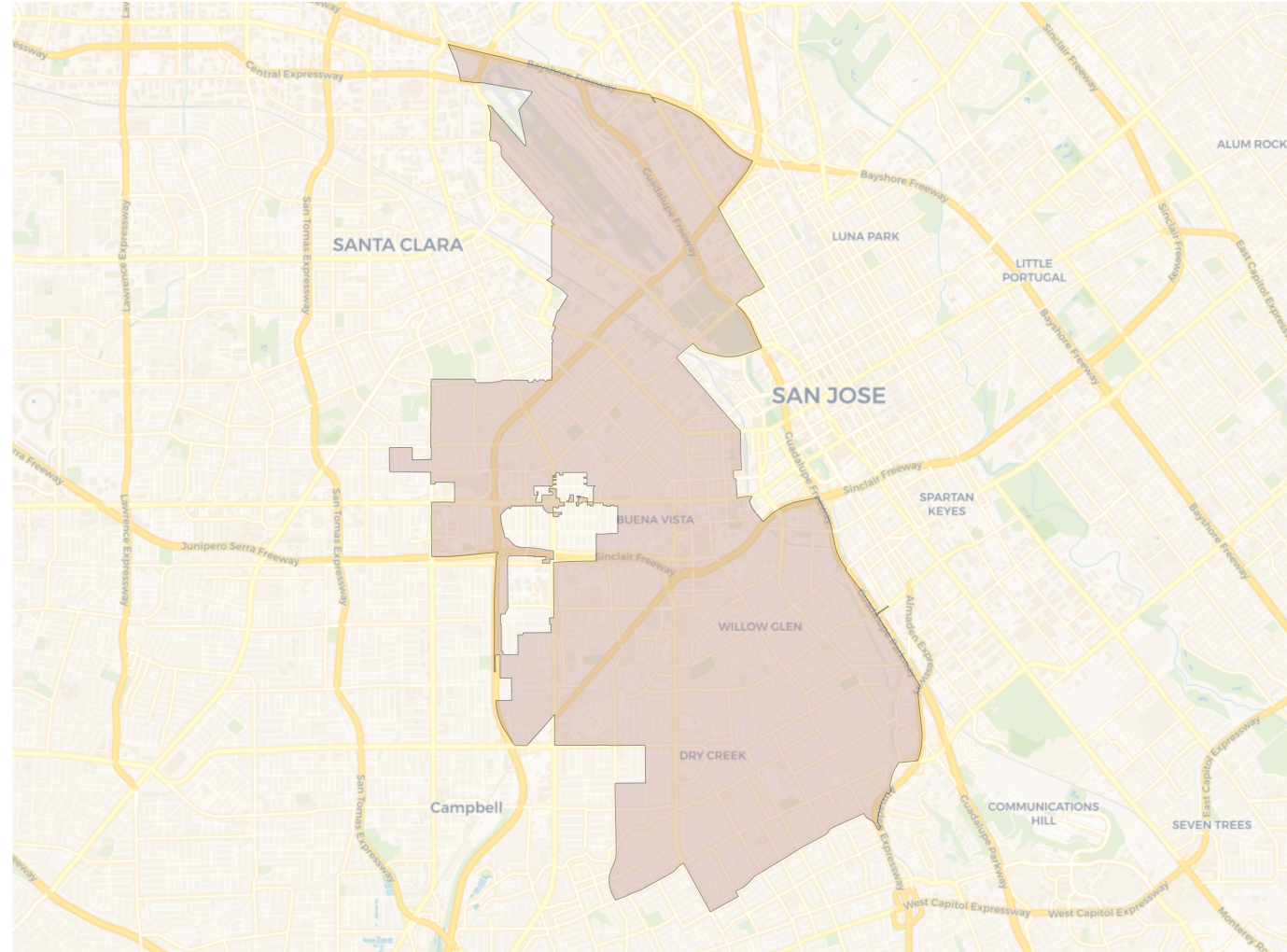
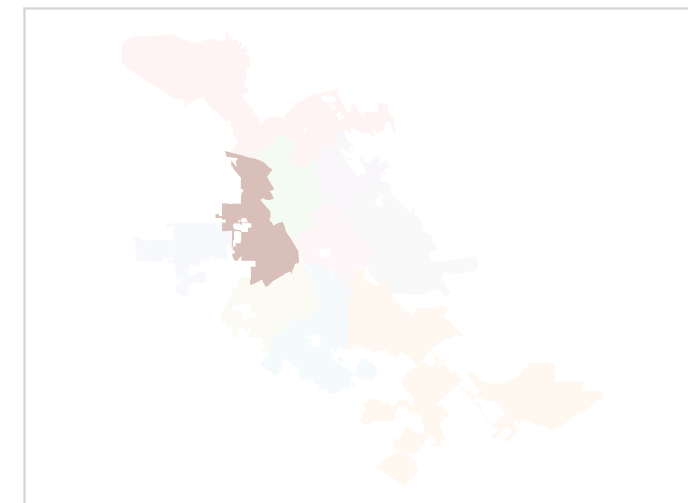
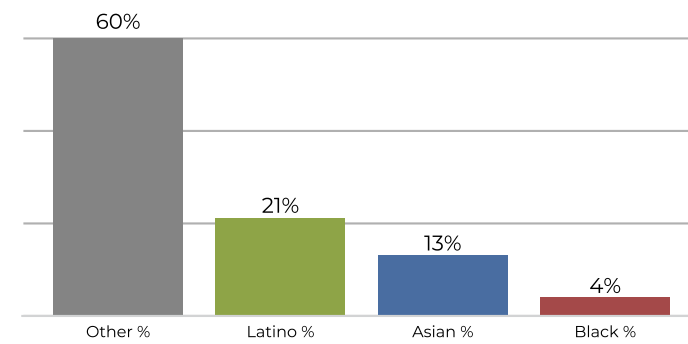
Population	Deviation	Deviation %	Other	Other %	Latino	Latino %	Asian	Asian %	Black	Black %
105,516	3,972	3.9%	9,137	8.7%	58,830	55.8%	35,644	33.8%	1,905	1.8%
Total CVAP	Other CVAP	Other CVAP %	Latino CVAP	Latino CVAP %	Asian CVAP	Asian CVAP %	Black CVAP	Black CVAP %		
62,384	8,427	13.5%	28,777	46.1%	23,599	37.8%	1,582	2.5%		

District 6

2020 Census



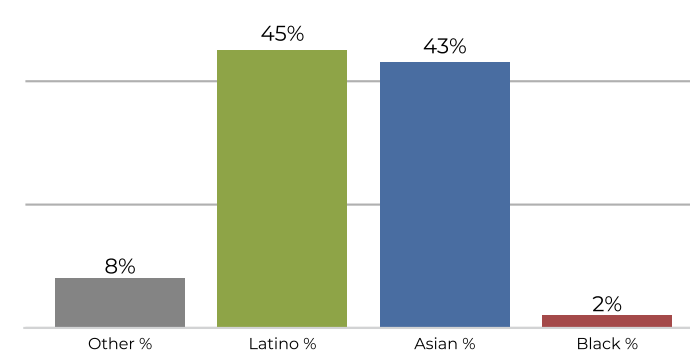
Citizen Voting Age Population



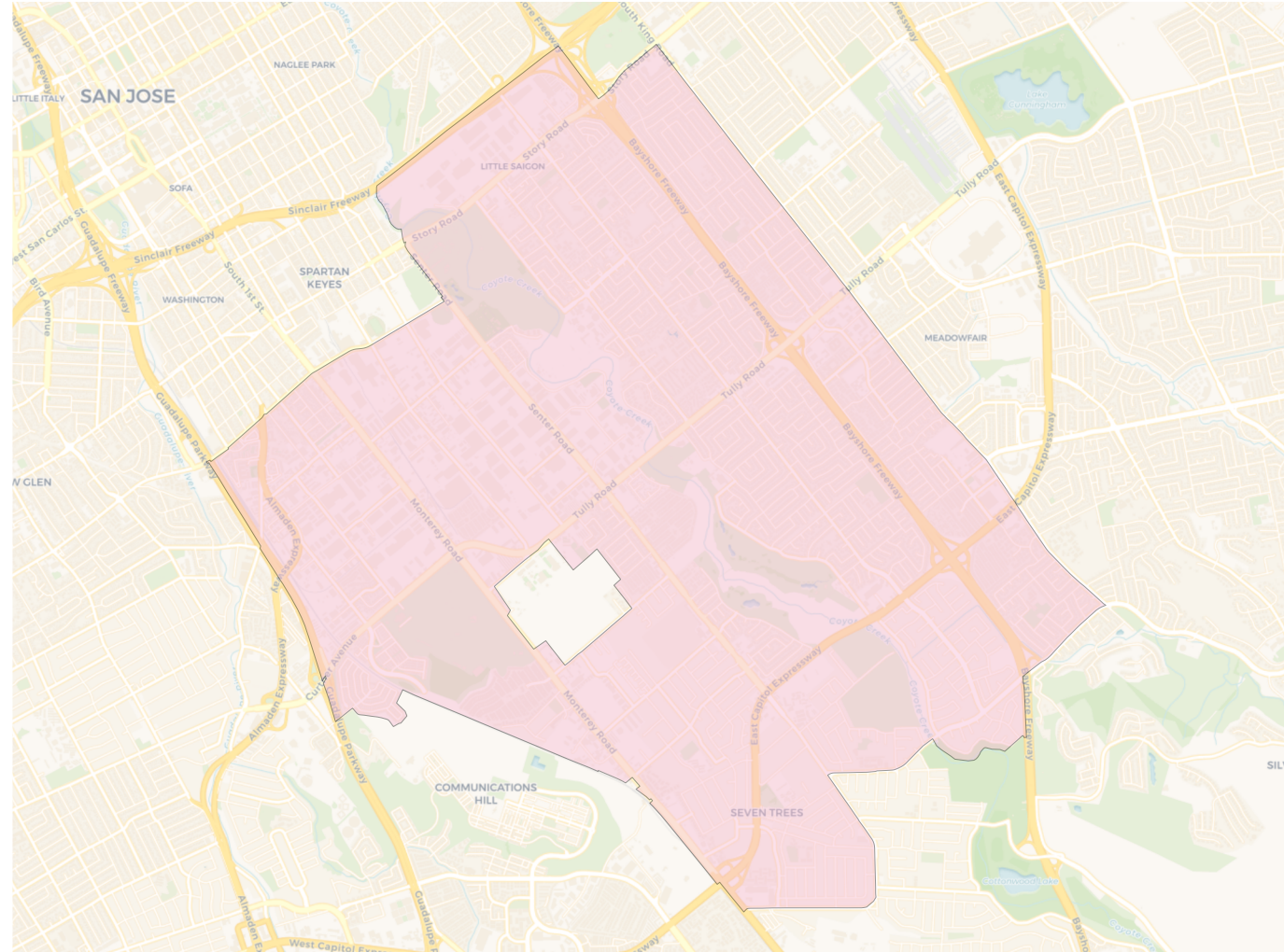
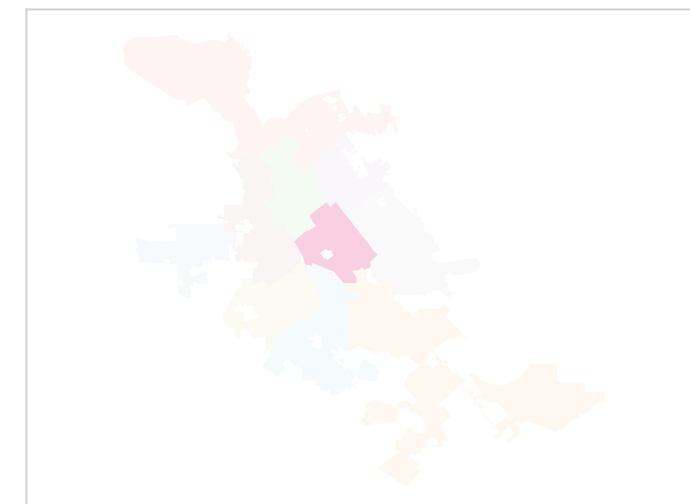
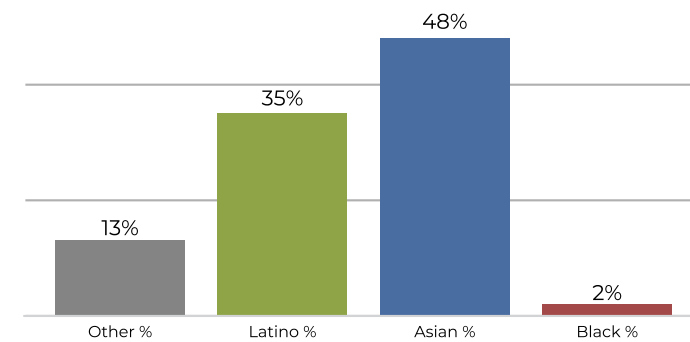
Population	Deviation	Deviation %	Other	Other %	Latino	Latino %	Asian	Asian %	Black	Black %
103,054	1,510	1.5%	49,854	48.4%	30,777	29.9%	18,940	18.4%	3,483	3.4%
Total CVAP	Other CVAP	Other CVAP %	Latino CVAP	Latino CVAP %	Asian CVAP	Asian CVAP %	Black CVAP	Black CVAP %		
68,938	41,840	60.7%	15,121	21.9%	9,026	13.1%	2,951	4.3%		

District 7

2020 Census



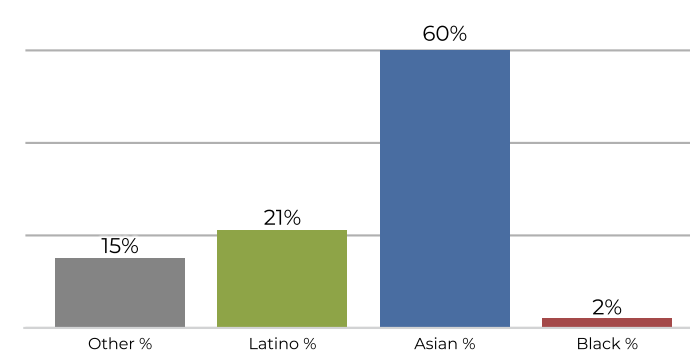
Citizen Voting Age Population



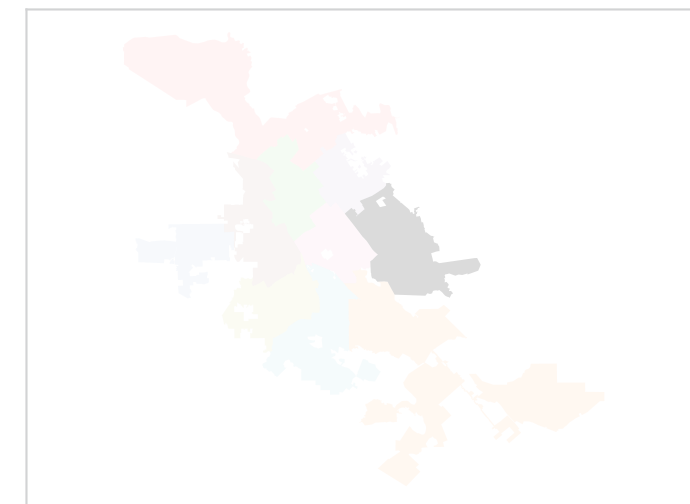
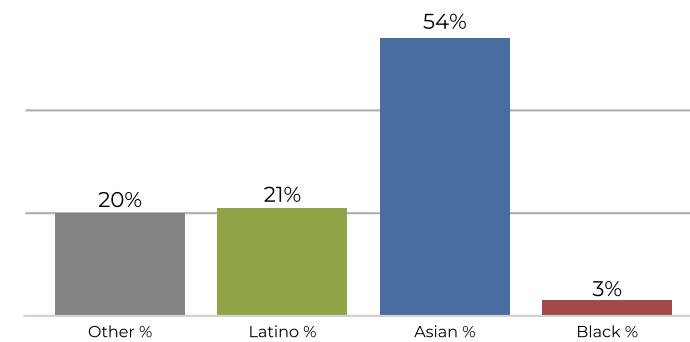
Population	Deviation	Deviation %	Other	Other %	Latino	Latino %	Asian	Asian %	Black	Black %
98,483	-3,061	-3.0%	8,797	8.9%	44,722	45.4%	42,592	43.2%	2,372	2.4%
Total CVAP	Other CVAP	Other CVAP %	Latino CVAP	Latino CVAP %	Asian CVAP	Asian CVAP %	Black CVAP	Black CVAP %		
56,866	7,564	13.3%	20,043	35.2%	27,833	48.9%	1,427	2.5%		

District 8

2020 Census



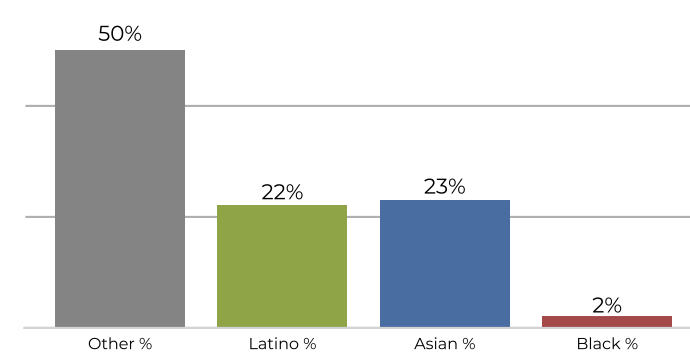
Citizen Voting Age Population



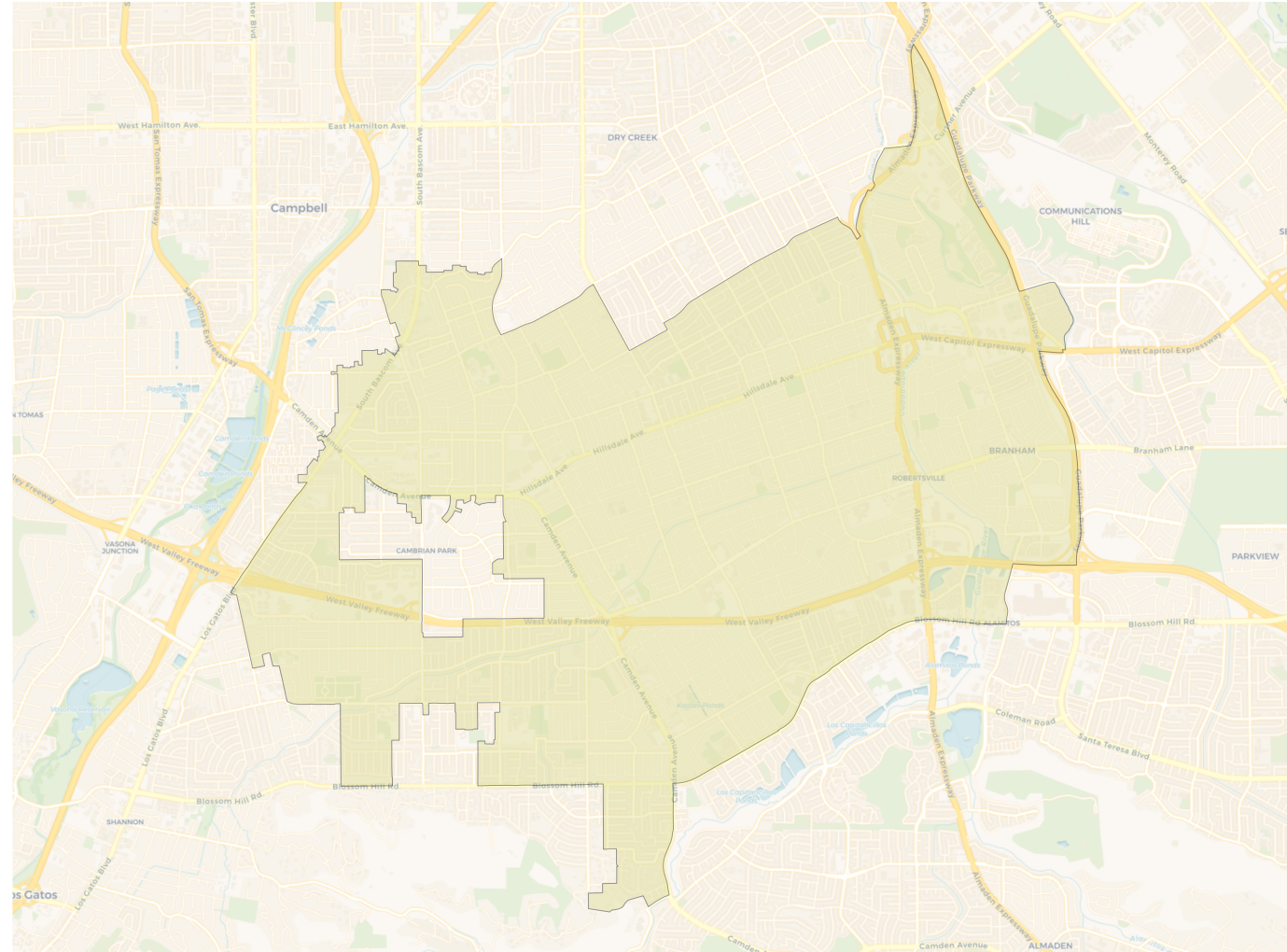
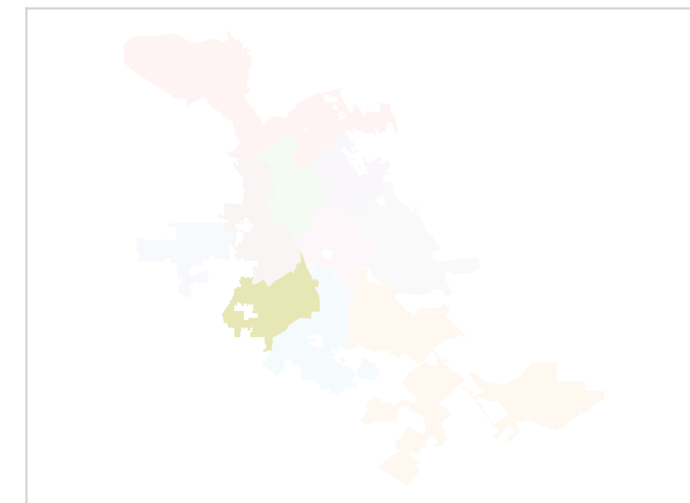
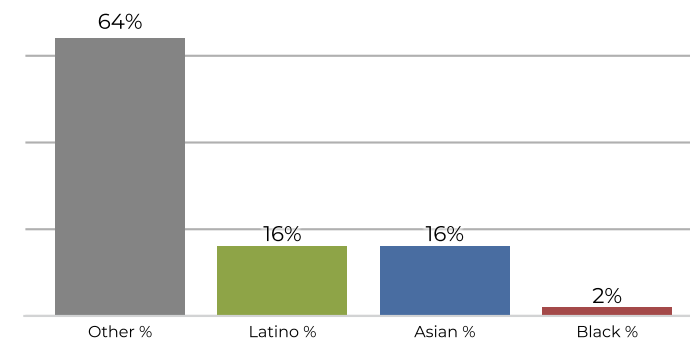
Population	Deviation	Deviation %	Other	Other %	Latino	Latino %	Asian	Asian %	Black	Black %
98,329	-3,215	-3.2%	15,056	15.3%	21,448	21.8%	59,776	60.8%	2,049	2.1%
Total CVAP	Other CVAP	Other CVAP %	Latino CVAP	Latino CVAP %	Asian CVAP	Asian CVAP %	Black CVAP	Black CVAP %		
68,061	13,991	20.6%	14,788	21.7%	37,241	54.7%	2,041	3.0%		

District 9

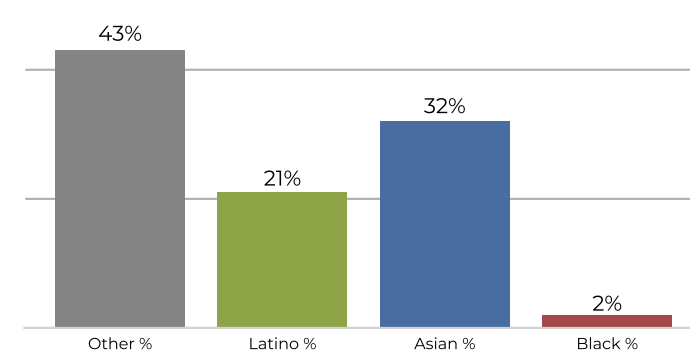
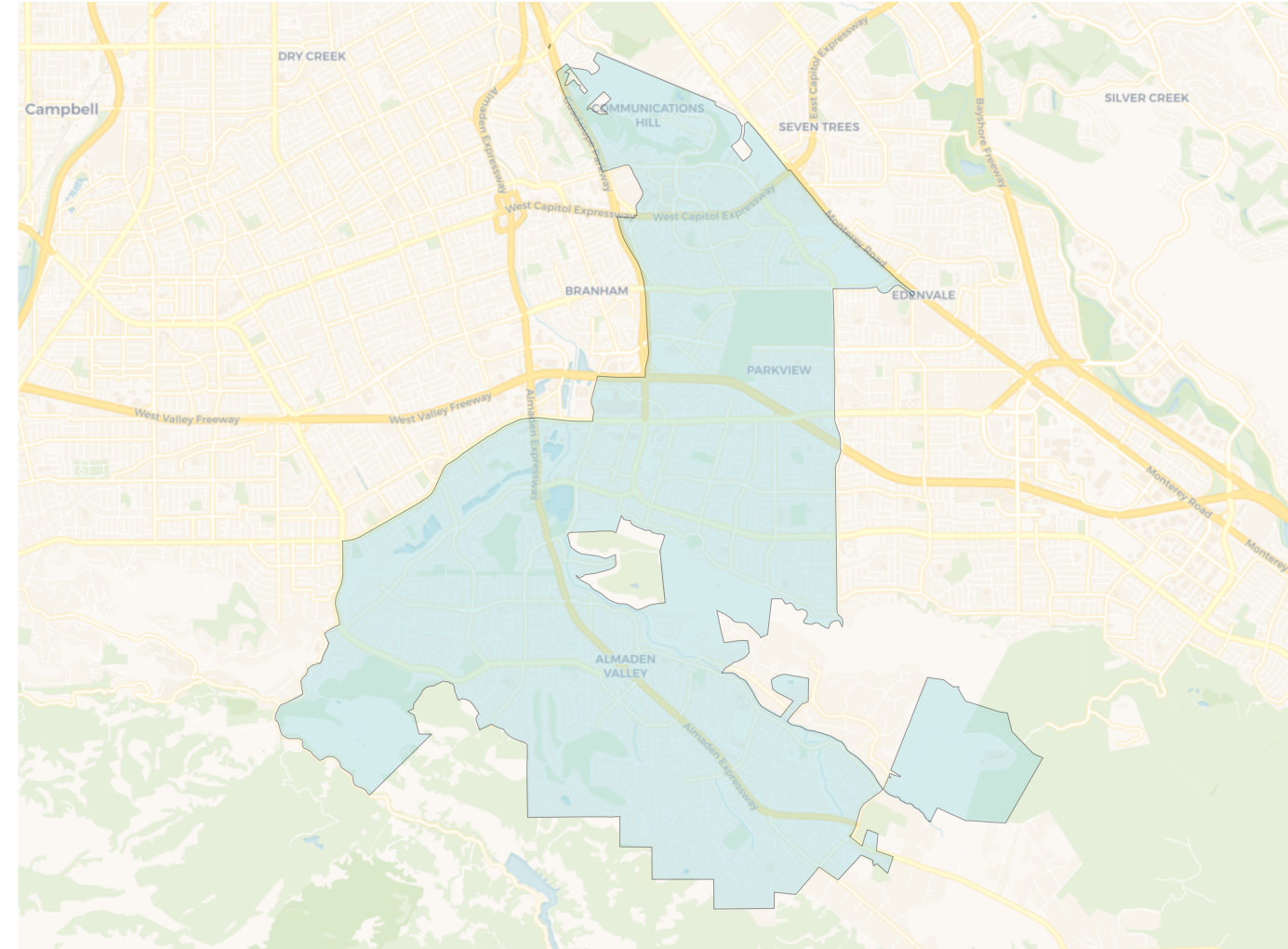
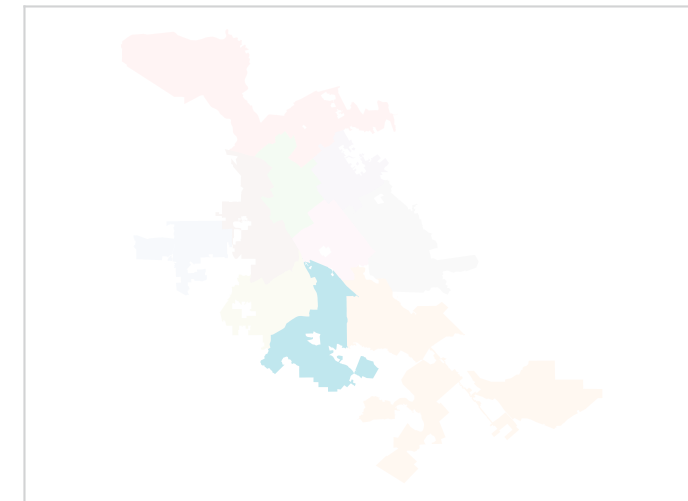
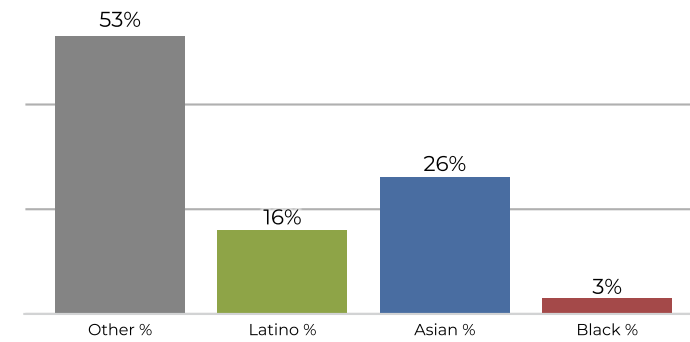
2020 Census



Citizen Voting Age Population



Population	Deviation	Deviation %	Other	Other %	Latino	Latino %	Asian	Asian %	Black	Black %
101,477	-67	-0.1%	51,691	50.9%	22,947	22.6%	23,988	23.6%	2,851	2.8%
Total CVAP	Other CVAP	Other CVAP %	Latino CVAP	Latino CVAP %	Asian CVAP	Asian CVAP %	Black CVAP	Black CVAP %		
66,376	42,617	64.2%	10,863	16.4%	10,957	16.5%	1,939	2.9%		

District 10
2020 Census

Citizen Voting Age Population


Population	Deviation	Deviation %	Other	Other %	Latino	Latino %	Asian	Asian %	Black	Black %
98,770	-2,774	-2.7%	43,074	43.6%	20,944	21.2%	32,207	32.6%	2,545	2.6%
Total CVAP	Other CVAP	Other CVAP %	Latino CVAP	Latino CVAP %	Asian CVAP	Asian CVAP %	Black CVAP	Black CVAP %		
65,956	35,450	53.7%	10,672	16.2%	17,416	26.4%	2,418	3.7%		