



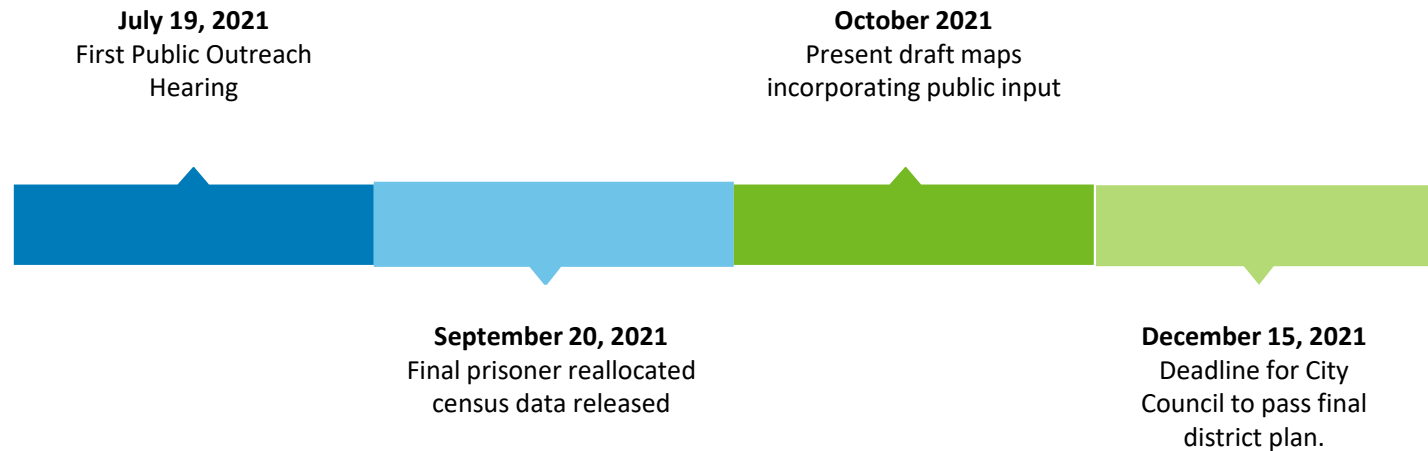
**REDISTRICTING
PARTNERS**



City of San Jose
2021 Redistricting



Redistricting Timeline



Communities of Interest

Public Community of Interest Form

- Input can be provided in public hearings or using our “Community of Interest” Worksheet.
- This can be provided on the website as a part of overall community engagement strategy.
- Some agencies convert these to a webform or survey instrument.



Communities of Interest

Drawing YOUR Communities of Interest

The City of San Jose is using DistrictR as a public mapping tool to allow residents to draw their own Communities of Interest.



You draw the lines.

https://districtr.org/tag/san_jose

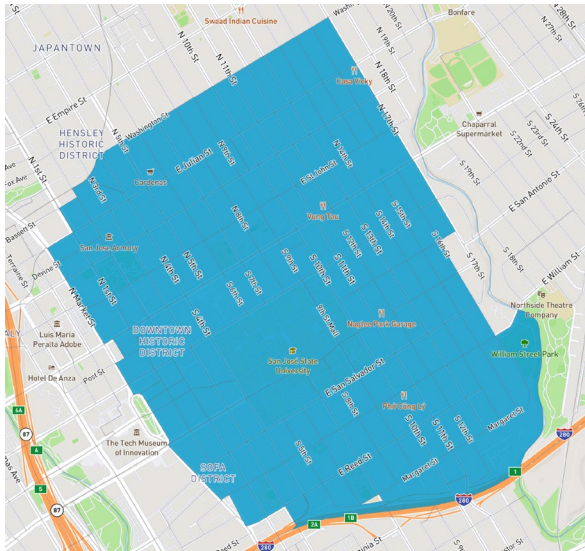
Communities of Interest

In-Person and Submitted Testimonials

The public has started engaging and sending their community of interest input to the City.

- Keep Penitencia neighborhood in District 4
- Delmas Park and Downtown West should be in the same district
- Keep Filipino American community together
 - Important Place: Filipino Community Center on North 6th St.
- Keep downtown San Jose together
- Keep Berryessa together

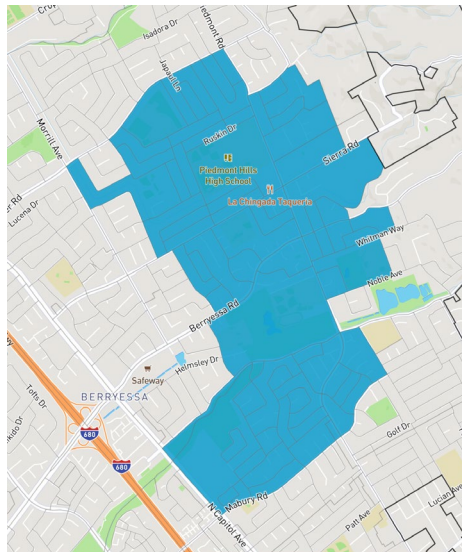
COI Submissions



COI Map: 34544

No description

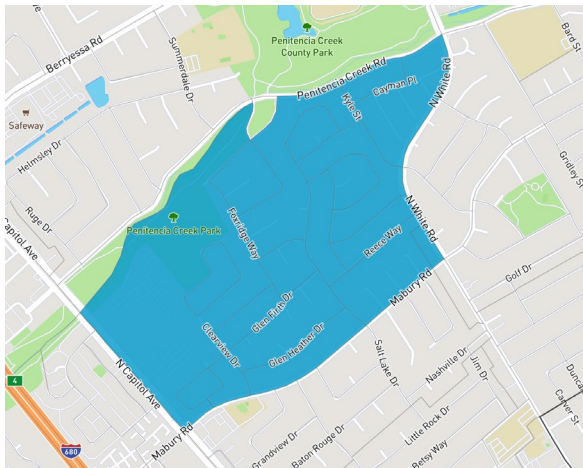
COI Submissions



COI Map: 47472

No description

COI Submissions

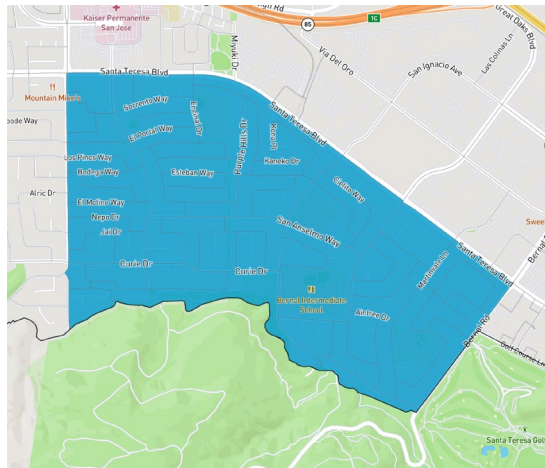


COI Map: 47755

Penitencia Neighborhood Association

“This community makes up the Penitencia Neighborhood homes that have gathered together to form the Penitencia Neighborhood Association. Roughly 500 members on 67 streets and courts located in the Upper Penitencia Creek Region of the City of San Jose, CA”

COI Submissions

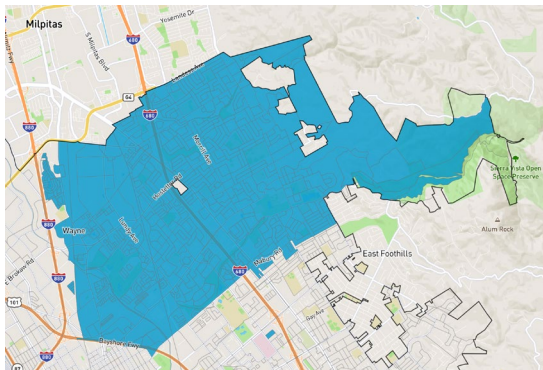


COI Map: 48872

STBNA – no description

COI Submissions

COI Map: 48914

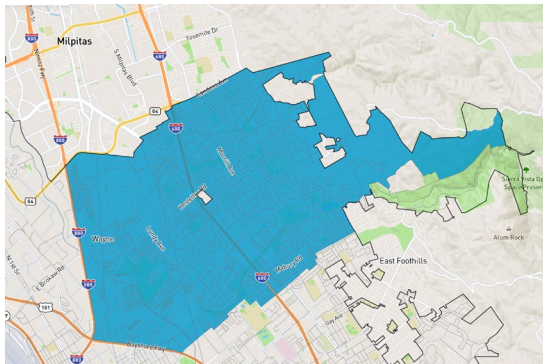


“Berryessa neighborhoods
approximation”

COI Submissions

COI Map: 48921

Berryessa approximation

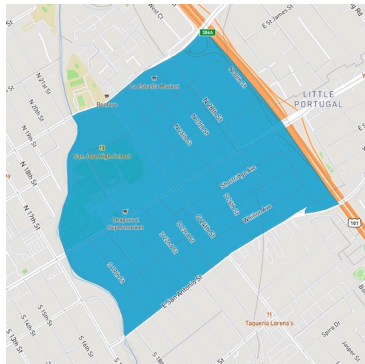


COI Submissions

COI Map: 48929

Roosevelt Park

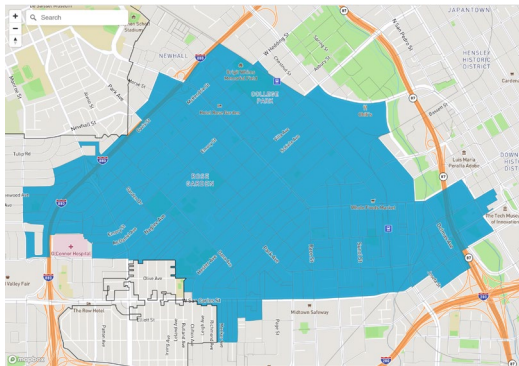
“This is the area represented by the Roosevelt Park Neighborhood Association.”



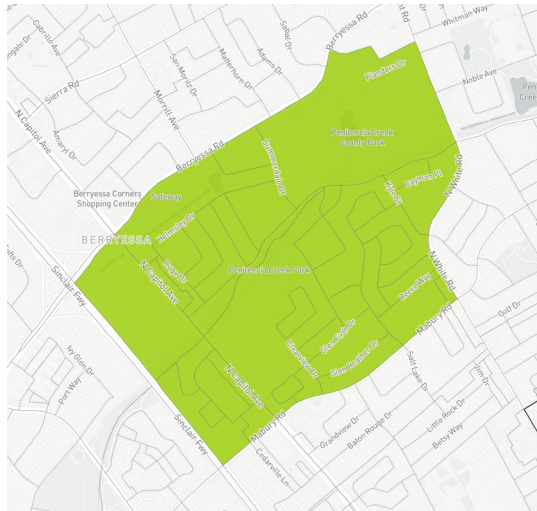
COI Submissions

COI Map: 51269

No description



COI Submissions



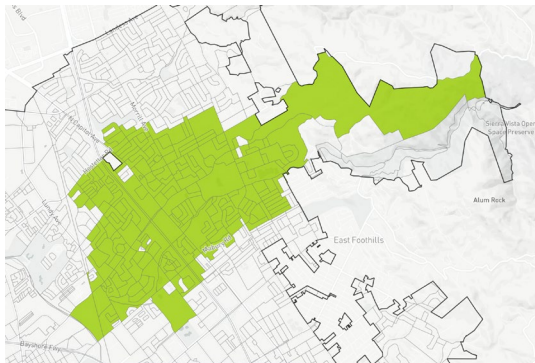
District Map: PNA
47471

Drawn as a district

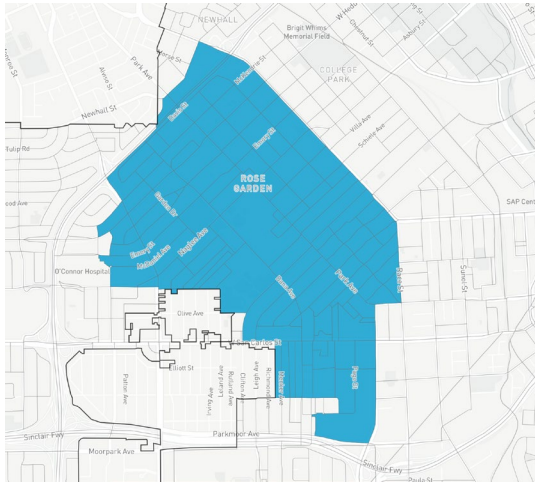
COI Submissions

District Map: 47909

Drawn as a district



COI Submissions



District Map: 51266

Drawn as a district

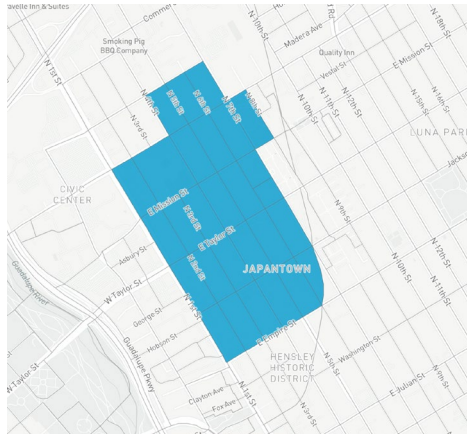
COI Submissions



District Map: 51512
Japantown

Drawn as a district

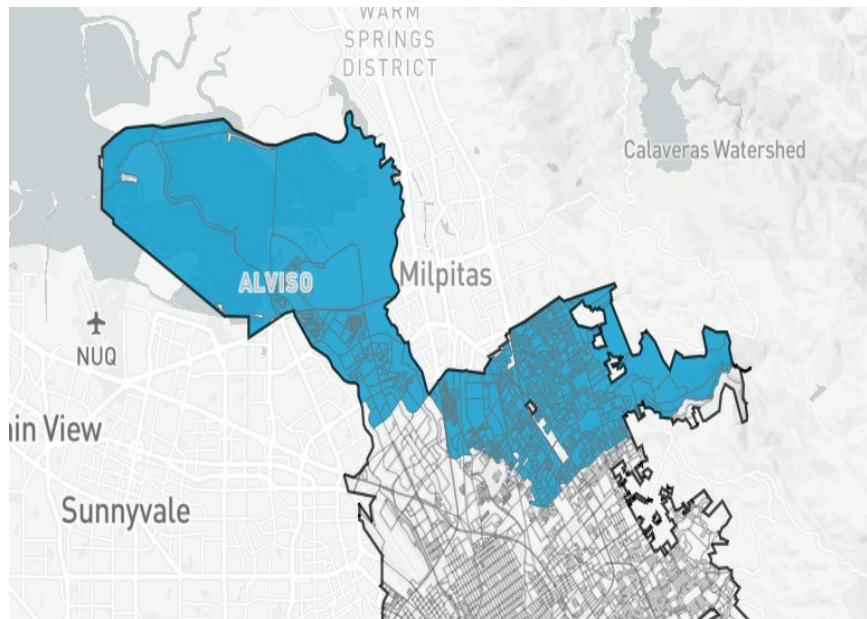
COI Submissions



District Map: 51516

Drawn as a district

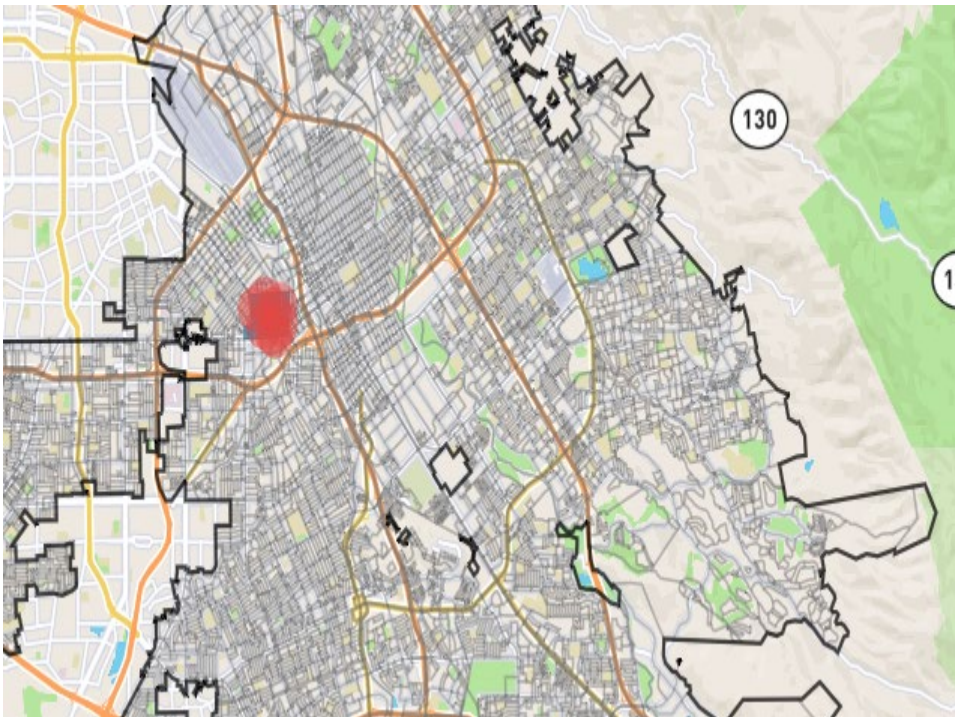
COI Submissions



District Map: 58492
District 4 Collins

Drawn as a district

COI Submissions



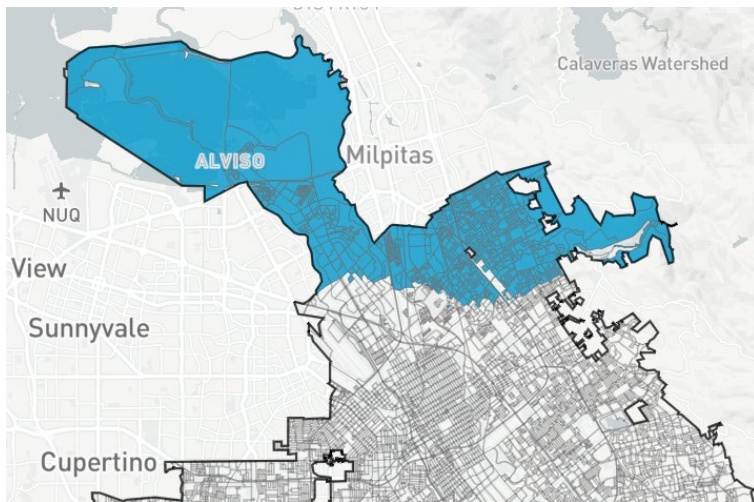
COI Map: 56683
St. Leo's | Sunol -
Midtown

An incredibly diverse and growing neighborhood characterized by its mixed-use land zoning, positing various small businesses, restaurants, public transit, arts venues, and varied ways of living (apartment, duplex, single-family home) that add to the depth of diversity.

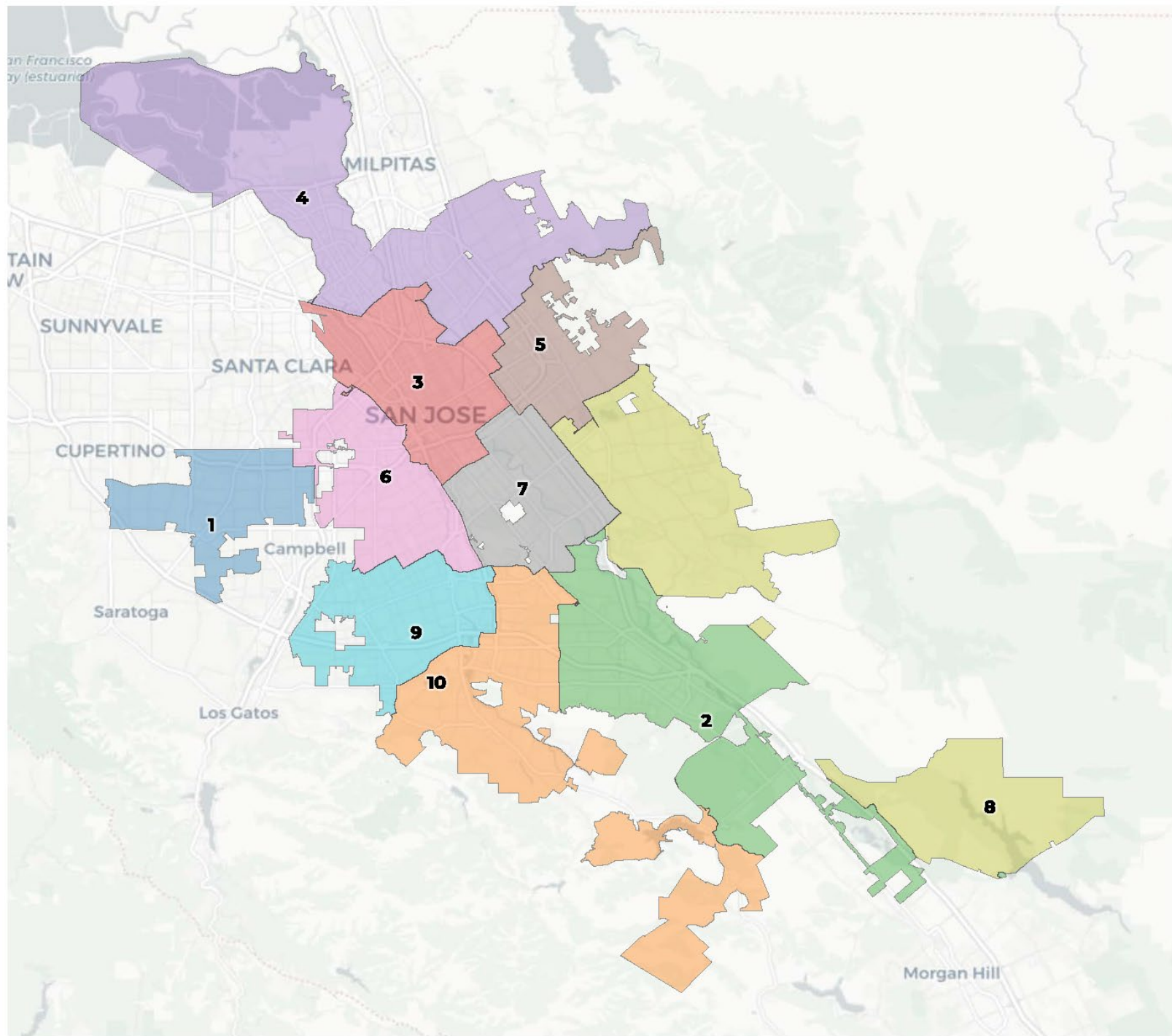
Demographics include Latino, East-Indian, Caucasian, and Filipino.

The glue that holds St. Leos | Sunol-Midtown neighborhood together is the ease of living

COI Submissions



District Map: 56557
District 4 Collins



2020 Census

	1	10	2	3	4	5	6	7	8	9
Population	99,298	94,341	100,133	108,138	118,960	98,107	101,289	102,247	98,334	94,815
Deviation	-2,268	-7,225	-1,433	6,572	17,394	-3,459	-277	681	-3,232	-6,751
Deviation %	-2.2%	-7.1%	-1.4%	6.5%	17.1%	-3.4%	-0.3%	0.7%	-3.2%	-6.6%
Other	30,818	41,618	30,194	27,184	20,294	8,760	48,392	10,256	15,060	50,514
Other %	31.0%	44.1%	30.2%	25.1%	17.1%	8.9%	47.8%	10.0%	15.3%	53.3%
Latino	19,401	20,087	34,265	50,704	18,602	56,939	30,690	45,489	21,450	20,064
Latino %	19.5%	21.3%	34.2%	46.9%	15.6%	58.0%	30.3%	44.5%	21.8%	21.2%
Asian	46,041	30,275	32,259	26,146	77,497	30,618	18,550	43,972	59,776	21,940
Asian %	46.4%	32.1%	32.2%	24.2%	65.1%	31.2%	18.3%	43.0%	60.8%	23.1%
Black	3,038	2,361	3,415	4,104	2,567	1,790	3,657	2,530	2,048	2,297
Black %	3.1%	2.5%	3.4%	3.8%	2.2%	1.8%	3.6%	2.5%	2.1%	2.4%

Citizen Voting Age Population (CVAP)

	1	10	2	3	4	5	6	7	8	9
Total CVAP	56,820	63,390	63,501	64,192	67,281	57,344	67,113	58,666	68,064	63,149
Other CVAP	27,434	34,128	25,688	22,146	15,751	7,917	40,750	8,806	13,993	41,774
Other CVAP %	48.3%	53.8%	40.5%	34.5%	23.4%	13.8%	60.7%	15.0%	20.6%	66.2%
Latino CVAP	7,872	10,354	18,010	23,416	10,706	27,816	14,342	20,215	14,789	9,954
Latino CVAP %	13.9%	16.3%	28.4%	36.5%	15.9%	48.5%	21.4%	34.5%	21.7%	15.8%
Asian CVAP	19,565	16,568	17,544	15,490	38,746	20,136	9,051	28,189	37,241	9,878
Asian CVAP %	34.4%	26.1%	27.6%	24.1%	57.6%	35.1%	13.5%	48.1%	54.7%	15.6%
Black CVAP	1,948	2,340	2,259	3,140	2,078	1,474	2,969	1,456	2,041	1,543
Black CVAP %	3.4%	3.7%	3.6%	4.9%	3.1%	2.6%	4.4%	2.5%	3.0%	2.4%

2020 Census

	1	10	2	3	4	5	6	7	8	9
Population	99,298	94,341	100,133	108,138	118,960	98,107	101,289	102,247	98,334	94,815
Deviation	-2,268	-7,225	-1,433	6,572	17,394	-3,459	-277	681	-3,232	-6,751
Deviation %	-2.2%	-7.1%	-1.4%	6.5%	17.1%	-3.4%	-0.3%	0.7%	-3.2%	-6.6%
Other	30,818	41,618	30,194	27,184	20,294	8,760	48,392	10,256	15,060	50,514
Other %	31.0%	44.1%	30.2%	25.1%	17.1%	8.9%	47.8%	10.0%	15.3%	53.3%
Latino	19,401							45,489	21,450	20,064
Latino %	19.5%							44.5%	21.8%	21.2%
Asian	46,041							43,972	59,776	21,940
Asian %	46.4%							43.0%	60.8%	23.1%
Black	3,038	2,361	3,415	4,104	2,567	1,790	3,657	2,530	2,048	2,297
Black %	3.1%	2.5%	3.4%	3.8%	2.2%	1.8%	3.6%	2.5%	2.1%	2.4%

The total deviation of the plan is the sum of the absolute values of the highest and lowest districts. *Here the plan deviation is **24.2%***

Citizen Voting Age Population (CVAP)

	1	10	2	3	4	5	6	7	8	9
Total CVAP	56,820	63,390	63,501	64,192	67,281	57,344	67,113	58,666	68,064	63,149
Other CVAP	27,434	34,128	25,688	22,146	15,751	7,917	40,750	8,806	13,993	41,774
Other CVAP %	48.3%	53.8%	40.5%	34.5%	23.4%	13.8%	60.7%	15.0%	20.6%	66.2%
Latino CVAP	7,872	10,354	18,010	23,416	10,706	27,816	14,342	20,215	14,789	9,954
Latino CVAP %	13.9%	16.3%	28.4%	36.5%	15.9%	48.5%	21.4%	34.5%	21.7%	15.8%
Asian CVAP	19,565	16,568	17,544	15,490	38,746	20,136	9,051	28,189	37,241	9,878
Asian CVAP %	34.4%	26.1%	27.6%	24.1%	57.6%	35.1%	13.5%	48.1%	54.7%	15.6%
Black CVAP	1,948	2,340	2,259	3,140	2,078	1,474	2,969	1,456	2,041	1,543
Black CVAP %	3.4%	3.7%	3.6%	4.9%	3.1%	2.6%	4.4%	2.5%	3.0%	2.4%

From COI to Draft Maps

Getting from input to new proposed maps

Redistricting Partners needs feedback from the Commission on draft plan versions.

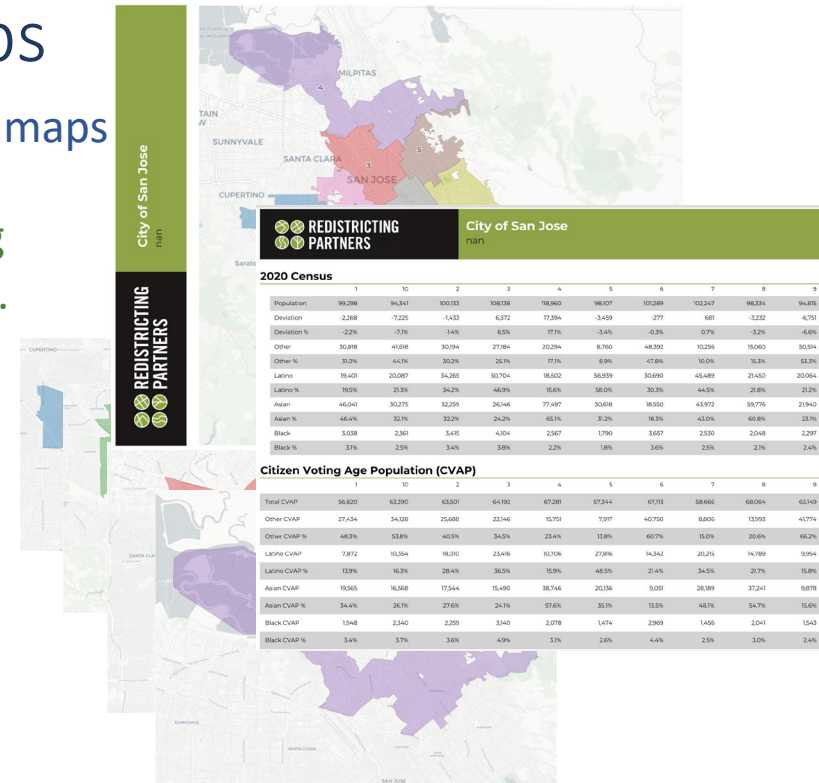
- All plans will follow the required criteria, VRA, Compactness, Contiguity, equal population, etc.
- Need feedback from the City Council and community on potential versions.

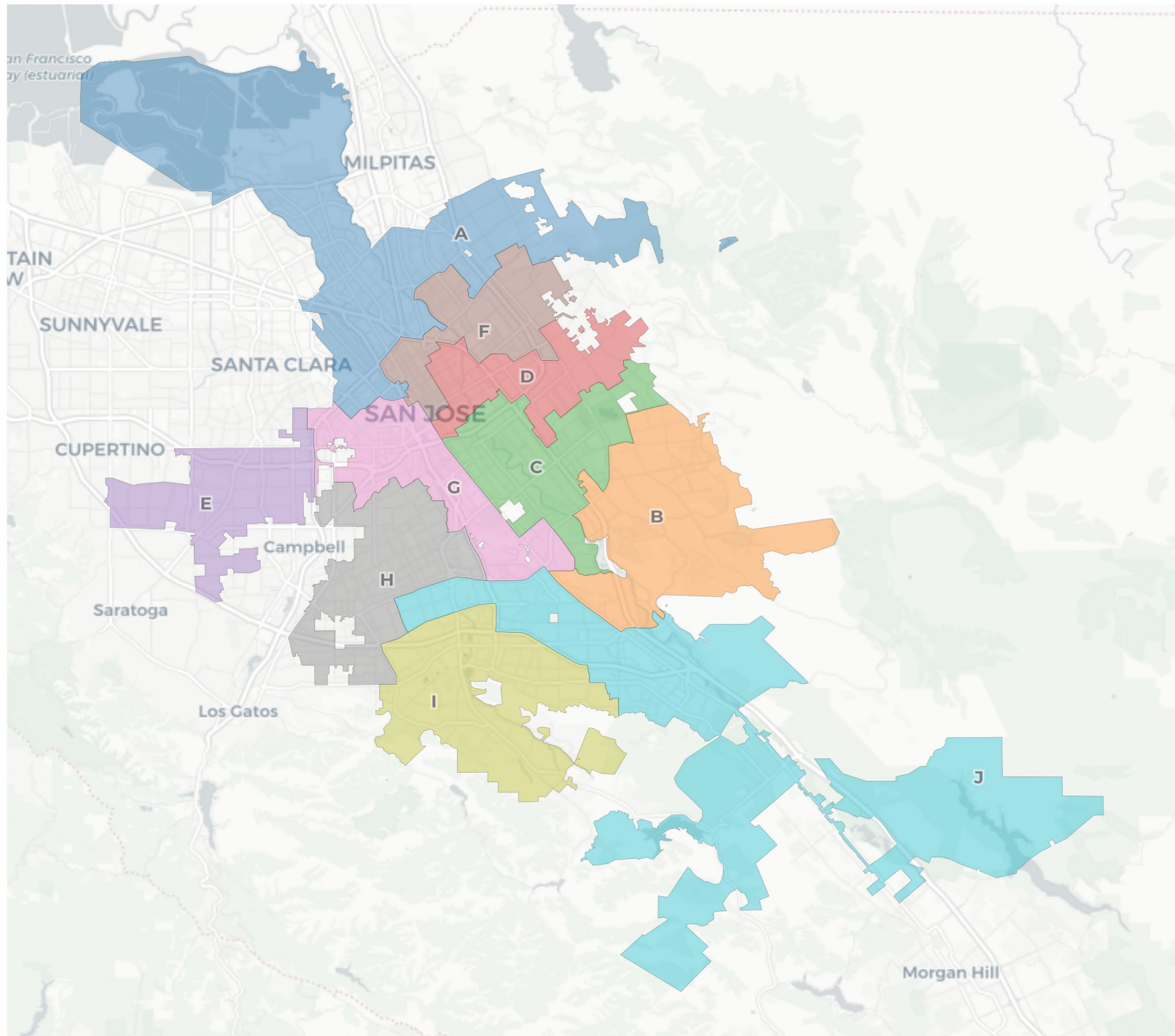
From COI to Draft Maps

Getting from input to new proposed maps

All public plans and Redistricting Partners Draft Maps will include.

- Overview Page
- Data Tables
- Individual district pages with data





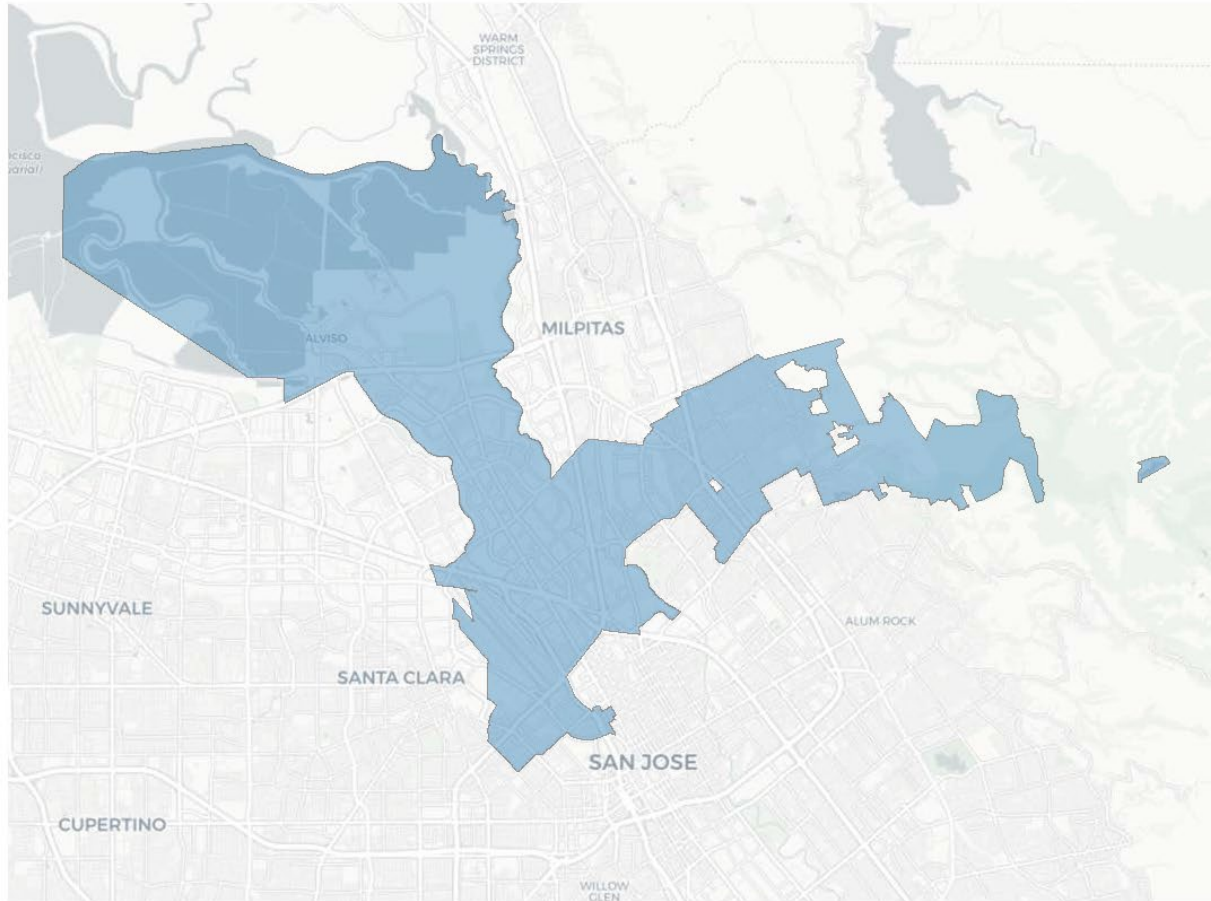
2020 Census

	A	B	C	D	E	F	G	H	I	J
Population	101,829	104,600	105,579	101,354	104,345	95,883	101,700	99,048	100,677	100,668
Deviation	261	3,032	4,011	-214	2,777	-5,685	132	-2,520	-891	-900
Deviation %	0.3%	3.0%	3.9%	-0.2%	2.7%	-5.6%	0.1%	-2.5%	-0.9%	-0.9%
Other	21,100	16,971	9,844	14,880	33,472	15,500	30,286	54,452	49,578	37,055
Other %	20.7%	16.2%	9.3%	14.7%	32.1%	16.2%	29.8%	55.0%	49.2%	36.8%
Latino	18,451	25,100	46,653	63,256	20,249	29,413	43,808	21,358	19,925	29,424
Latino %	18.1%	24.0%	44.2%	62.4%	19.4%	30.7%	43.1%	21.6%	19.8%	29.2%
Asian	59,797	60,037	46,745	20,680	47,502	48,466	23,437	20,880	28,874	30,679
Asian %	58.7%	57.4%	44.3%	20.4%	45.5%	50.5%	23.0%	21.1%	28.7%	30.5%
Black	2,481	2,492	2,337	2,538	3,122	2,504	4,169	2,358	2,300	3,510
Black %	2.4%	2.4%	2.2%	2.5%	3.0%	2.6%	4.1%	2.4%	2.3%	3.5%

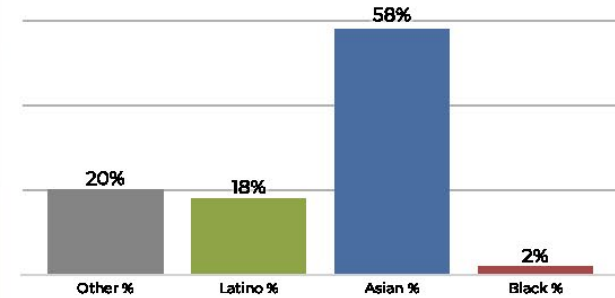
Citizen Voting Age Population (CVAP)

	A	B	C	D	E	F	G	H	I	J
Total CVAP	55,127	70,633	63,639	61,217	60,616	58,601	60,852	65,779	66,694	66,383
Other CVAP	15,625	15,809	8,556	12,915	29,640	13,407	26,371	44,113	39,986	31,977
Other CVAP %	28.3%	22.4%	13.4%	21.1%	48.9%	22.9%	43.3%	67.1%	60.0%	48.2%
Latino CVAP	9,943	15,519	20,957	32,651	8,535	13,500	20,443	10,413	9,738	15,774
Latino CVAP %	18.0%	22.0%	32.9%	53.3%	14.1%	23.0%	33.6%	15.8%	14.6%	23.8%
Asian CVAP	27,449	37,169	32,087	13,886	20,394	29,330	11,601	9,359	15,031	16,111
Asian CVAP %	49.8%	52.6%	50.4%	22.7%	33.6%	50.1%	19.1%	14.2%	22.5%	24.3%
Black CVAP	2,110	2,137	2,038	1,764	2,047	2,363	2,437	1,894	1,937	2,521
Black CVAP %	3.8%	3.0%	3.2%	2.9%	3.4%	4.0%	4.0%	2.9%	2.9%	3.8%

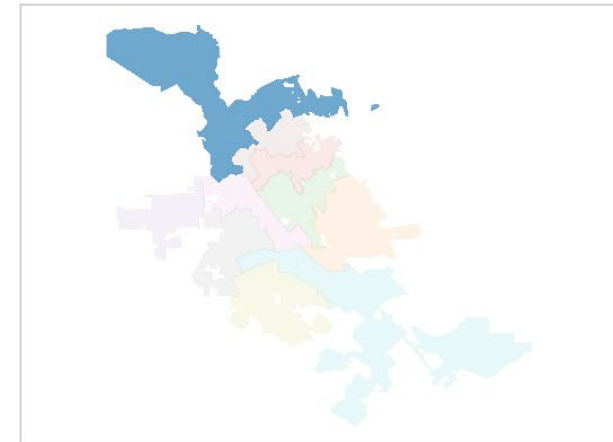
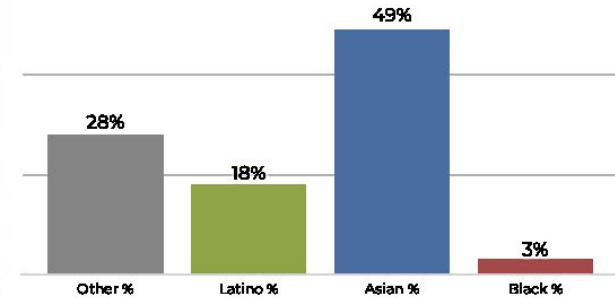
District A



2020 Census

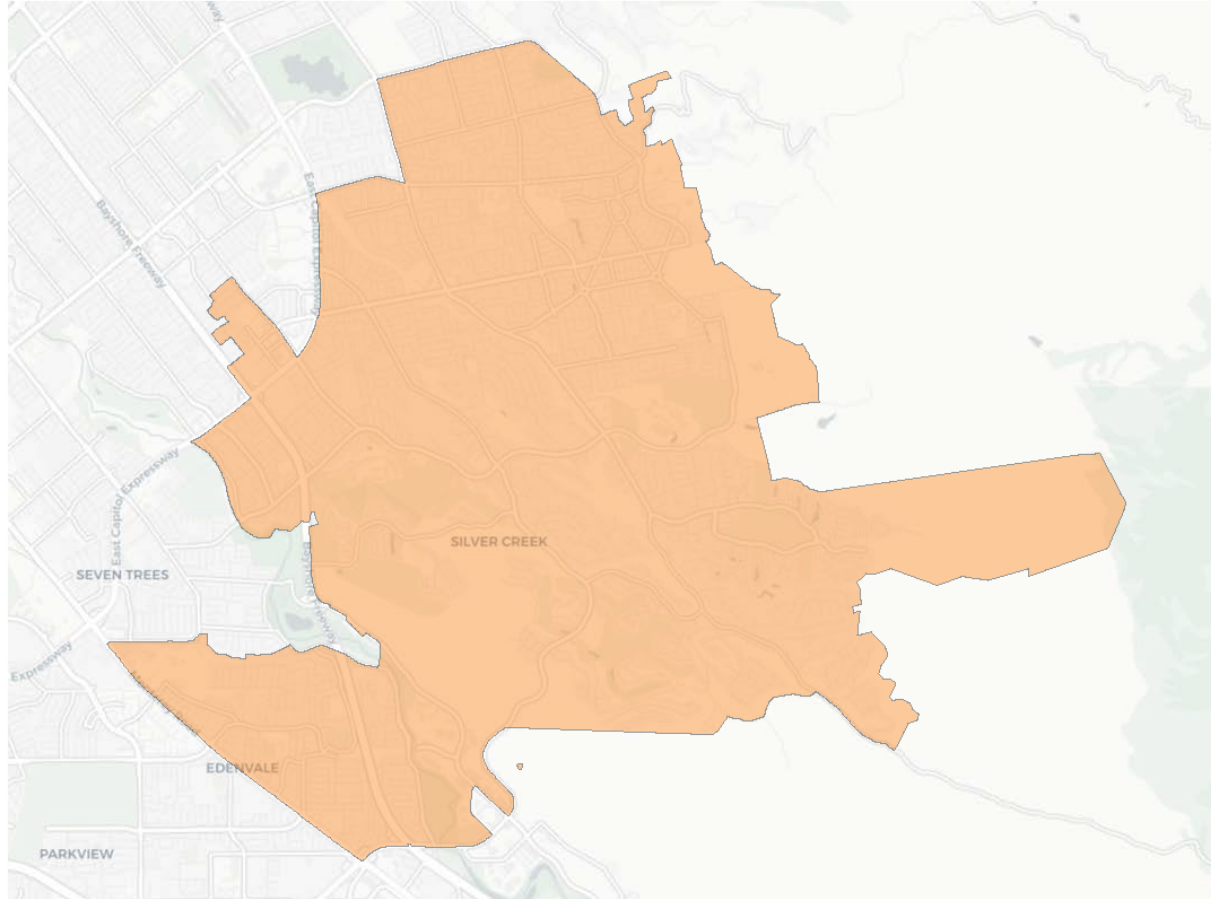


Citizen Voting Age Population

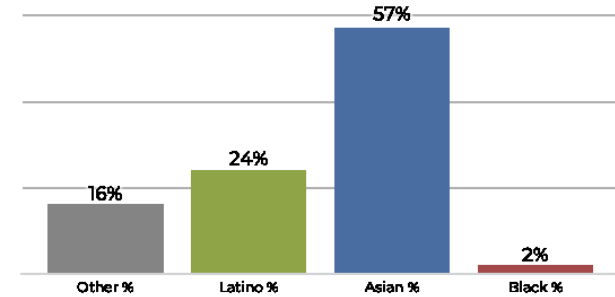


Population	Deviation	Deviation %	Other	Other %	Latino	Latino %	Asian	Asian %	Black	Black %
101,829	261	0.3%	21,100	20.7%	18,451	18.1%	59,797	58.7%	2,481	2.4%
Total CVAP	Other CVAP	Other CVAP %	Latino CVAP	Latino CVAP %	Asian CVAP	Asian CVAP %	Black CVAP	Black CVAP %		
55,127	15,625	28.3%	9,943	18.0%	27,449	49.8%	2,110	3.8%		

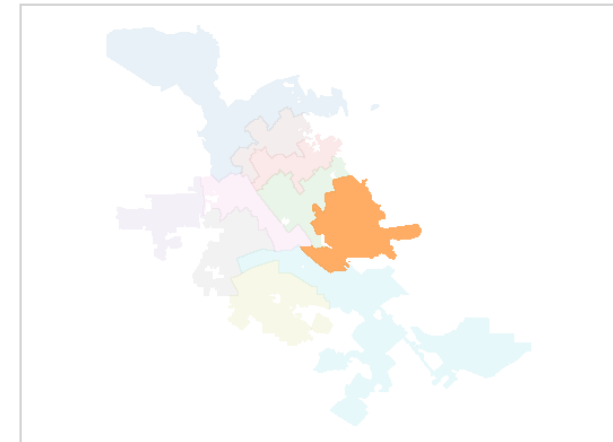
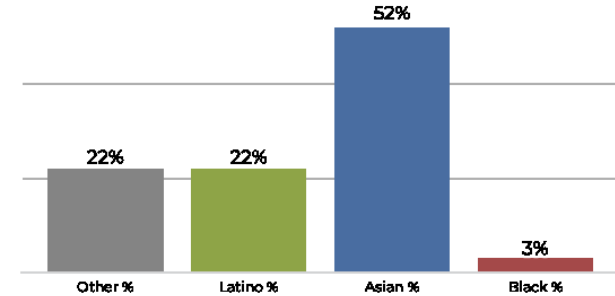
District B



2020 Census

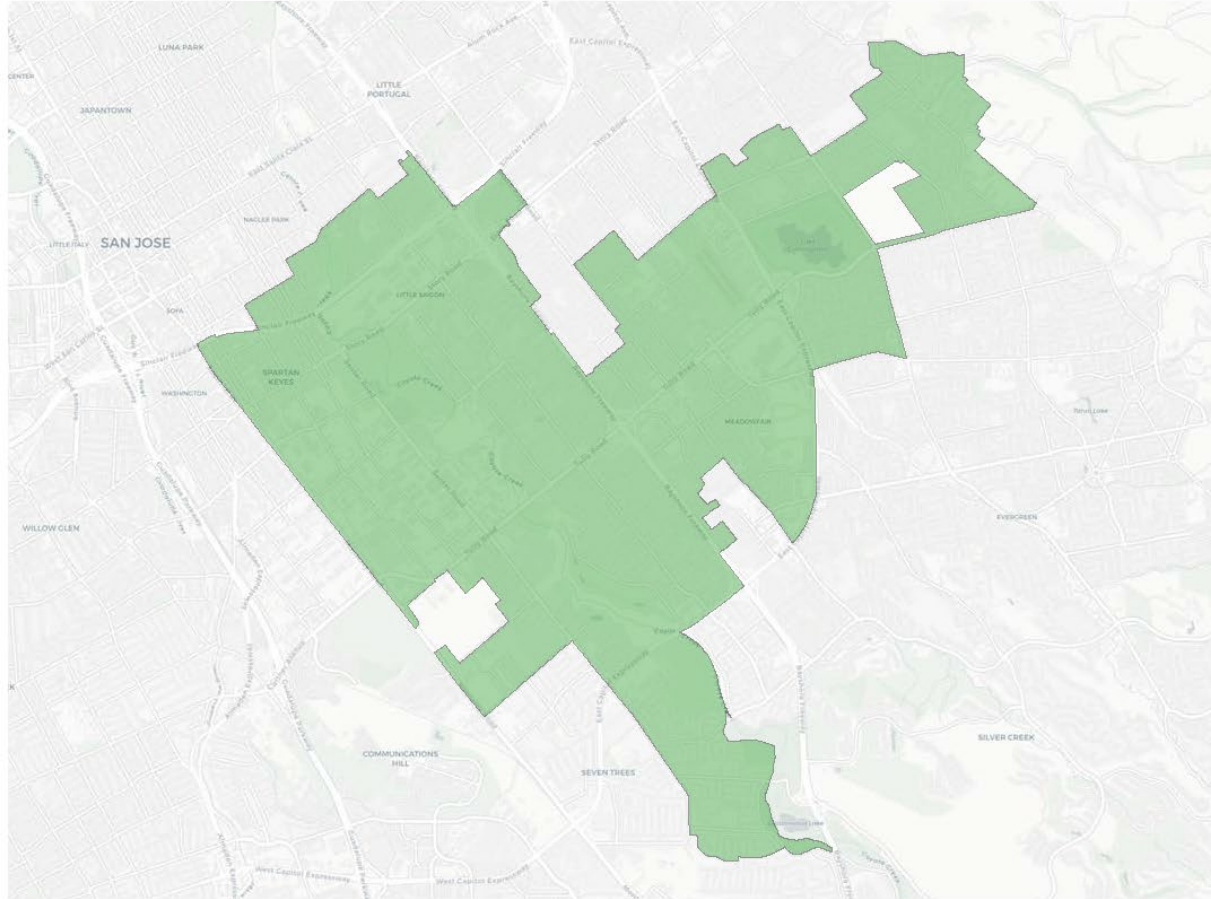


Citizen Voting Age Population

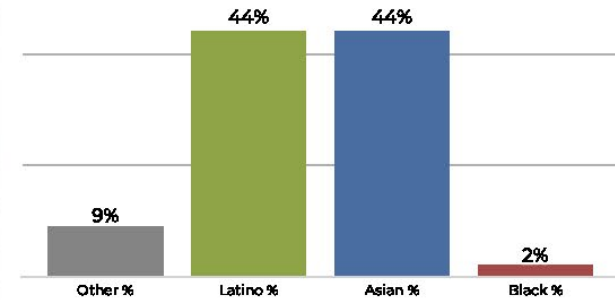


Population	Deviation	Deviation %	Other	Other %	Latino	Latino %	Asian	Asian %	Black	Black %
104,600	3,032	3.0%	16,971	16.2%	25,100	24.0%	60,037	57.4%	2,492	2.4%
Total CVAP	Other CVAP	Other CVAP %	Latino CVAP	Latino CVAP %	Asian CVAP	Asian CVAP %	Black CVAP	Black CVAP %		
70,633	15,809	22.4%	15,519	22.0%	37,169	52.6%	2,137	3.0%		

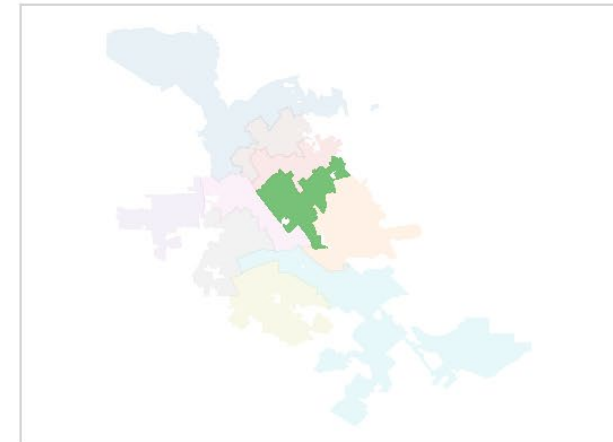
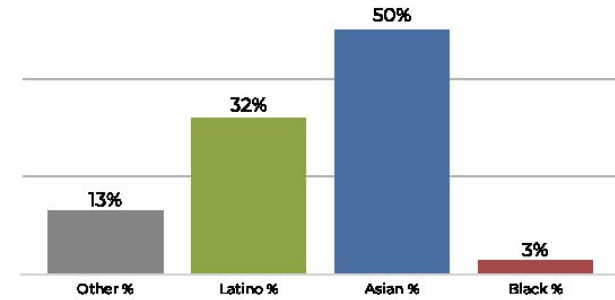
District C



2020 Census

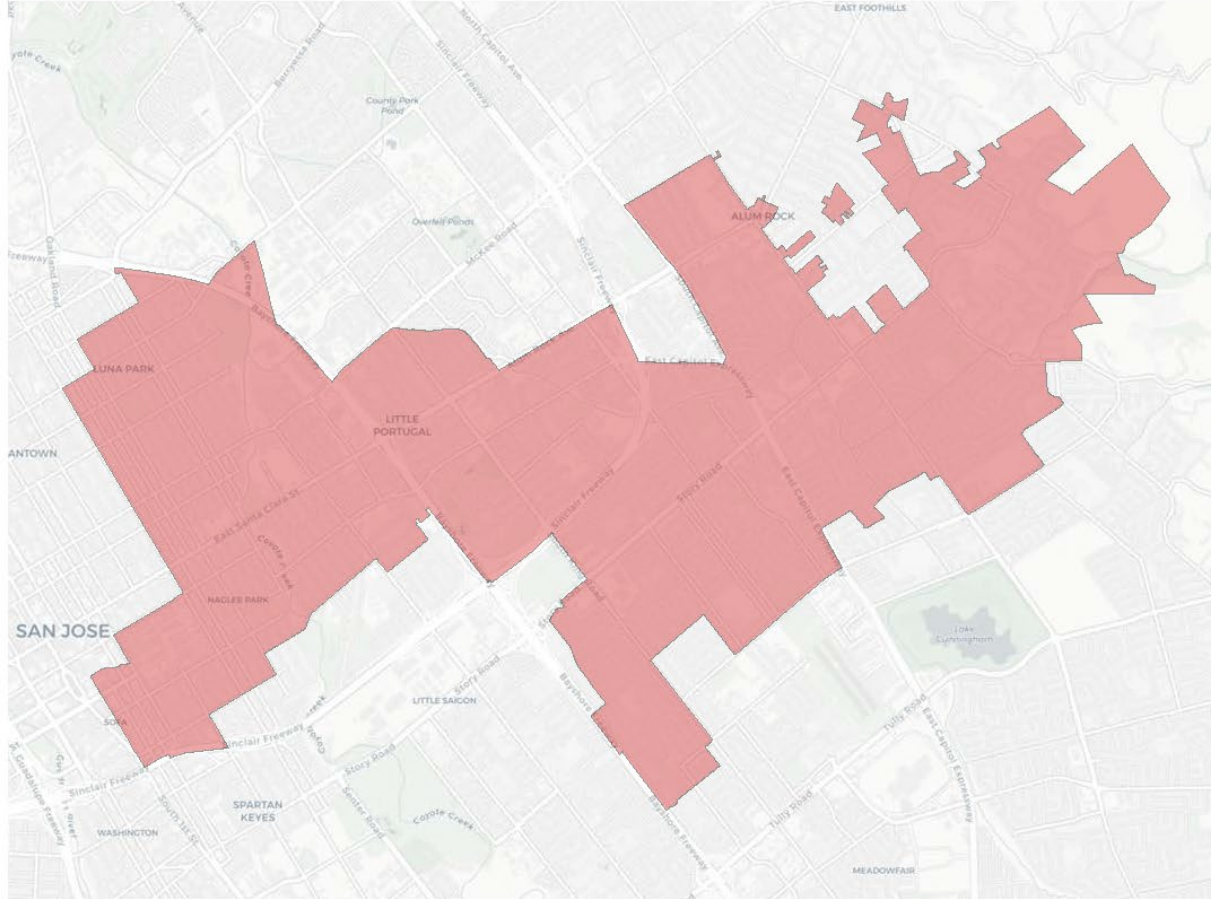


Citizen Voting Age Population

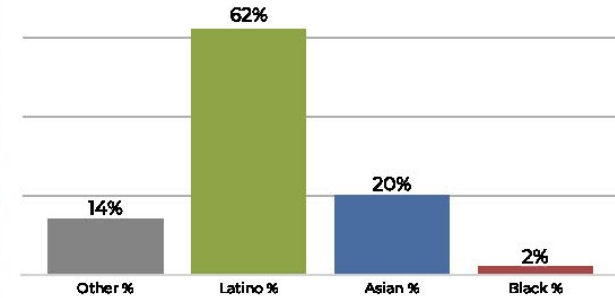


Population	Deviation	Deviation %	Other	Other %	Latino	Latino %	Asian	Asian %	Black	Black %
105,579	4,011	3.9%	9,844	9.3%	46,653	44.2%	46,745	44.3%	2,337	2.2%
Total CVAP	Other CVAP	Other CVAP %	Latino CVAP	Latino CVAP %	Asian CVAP	Asian CVAP %	Black CVAP	Black CVAP %		
63,639	8,556	13.4%	20,957	32.9%	32,087	50.4%	2,038	3.2%		

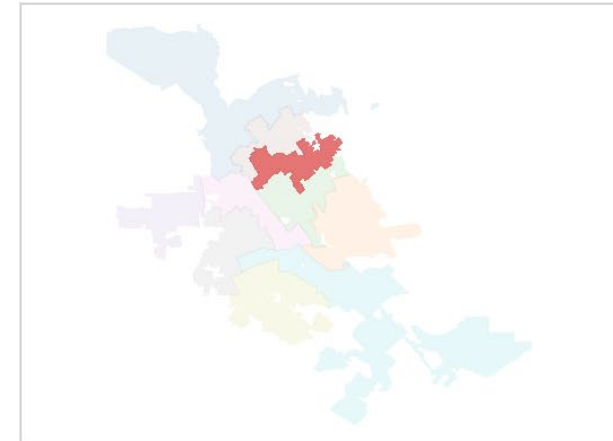
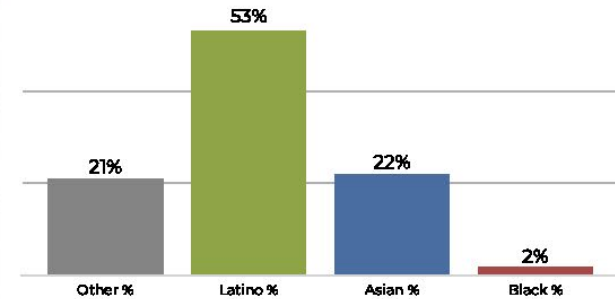
District D



2020 Census

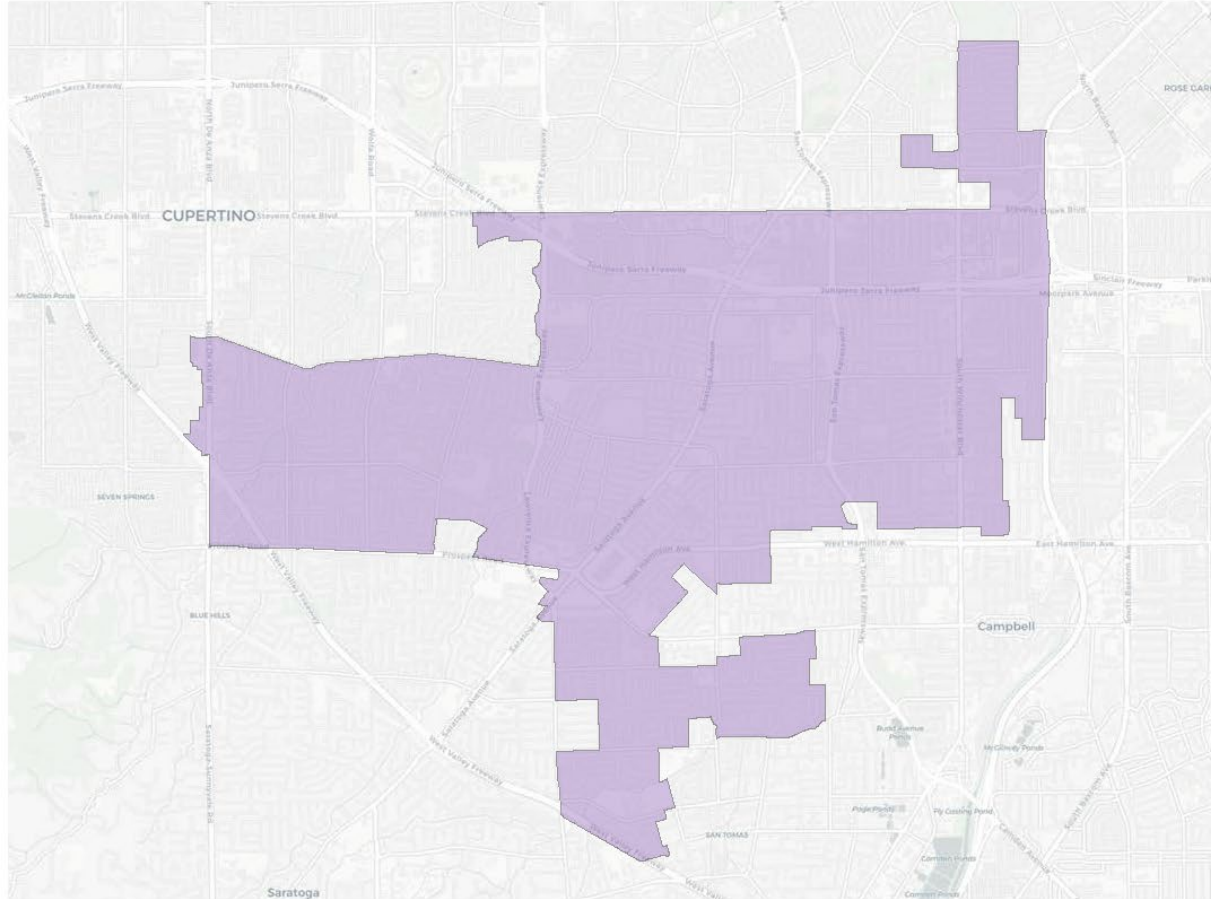


Citizen Voting Age Population

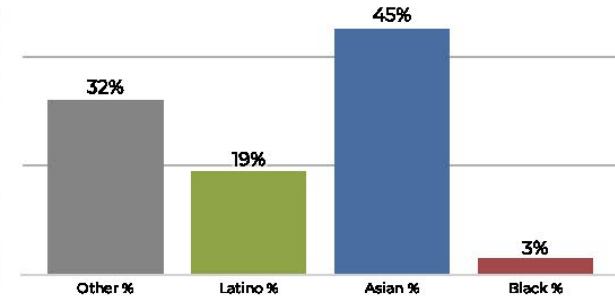


Population	Deviation	Deviation %	Other	Other %	Latino	Latino %	Asian	Asian %	Black	Black %
101,354	-214	-0.2%	14,880	14.7%	63,256	62.4%	20,680	20.4%	2,538	2.5%
Total CVAP	Other CVAP	Other CVAP %	Latino CVAP	Latino CVAP %	Asian CVAP	Asian CVAP %	Black CVAP	Black CVAP %		
61,217	12,915	21.1%	32,651	53.3%	13,886	22.7%	1,764	2.9%		

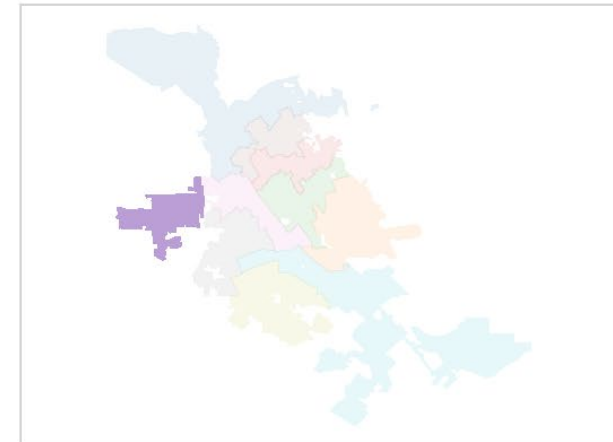
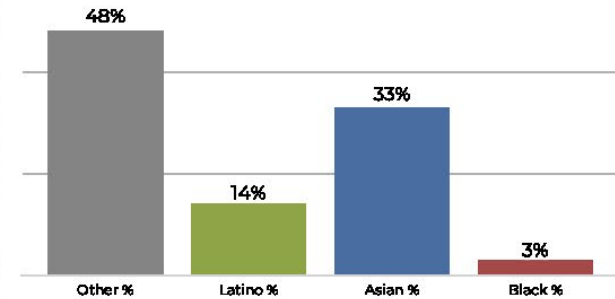
District E



2020 Census

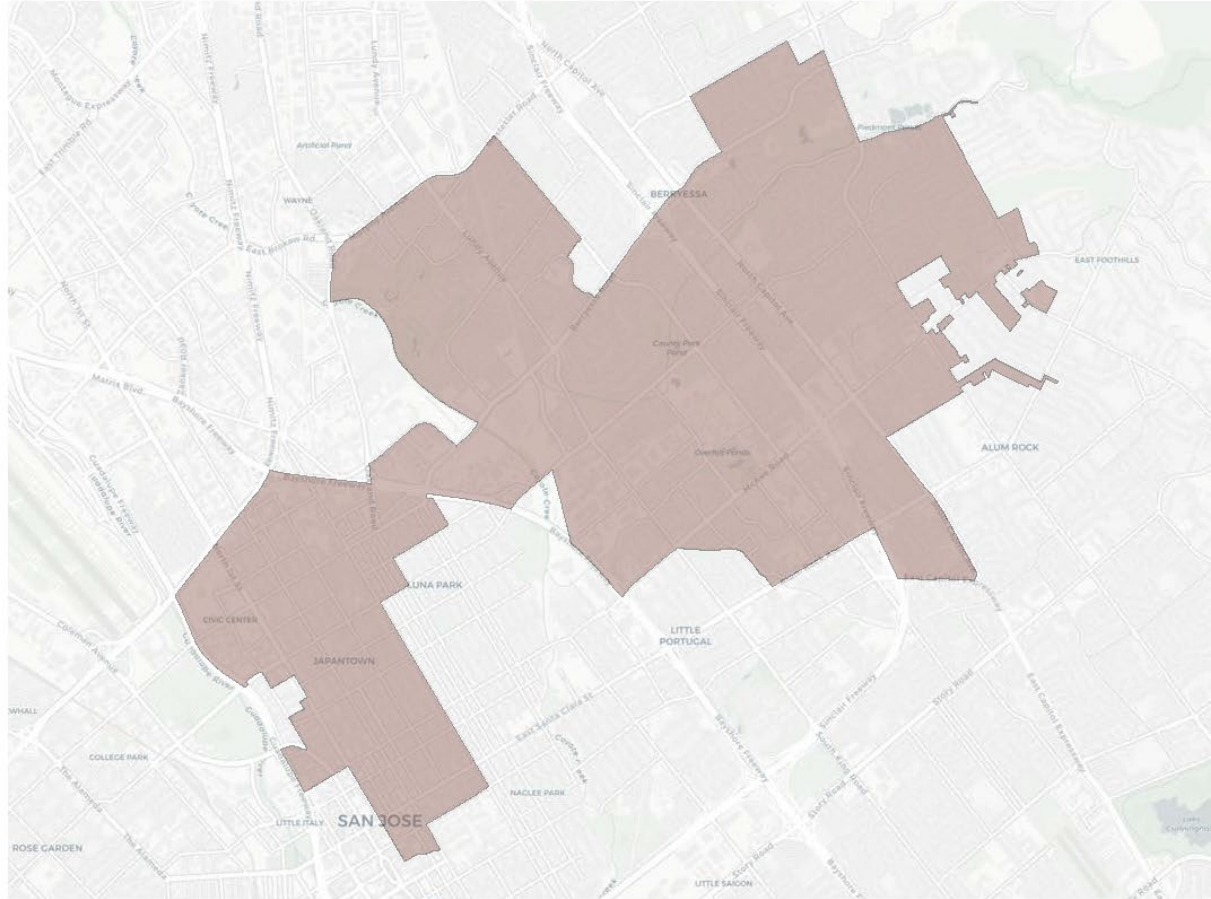


Citizen Voting Age Population

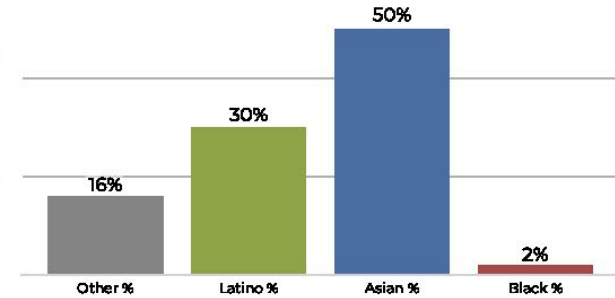


Population	Deviation	Deviation %	Other	Other %	Latino	Latino %	Asian	Asian %	Black	Black %
104,345	2,777	2.7%	33,472	32.1%	20,249	19.4%	47,502	45.5%	3,122	3.0%
Total CVAP	Other CVAP	Other CVAP %	Latino CVAP	Latino CVAP %	Asian CVAP	Asian CVAP %	Black CVAP	Black CVAP %		
60,616	29,640	48.9%	8,535	14.1%	20,394	33.6%	2,047	3.4%		

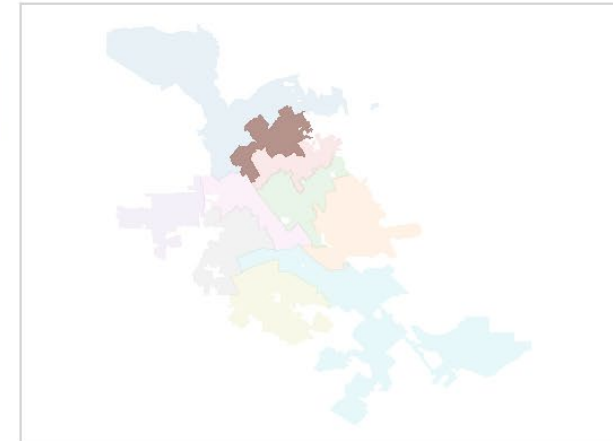
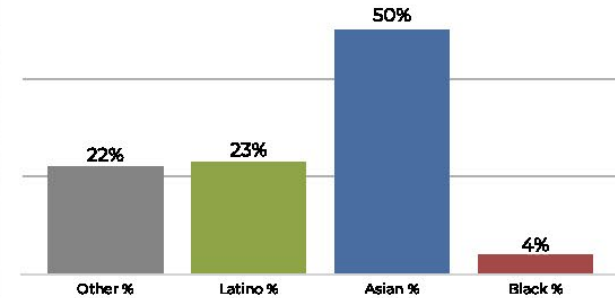
District F



2020 Census

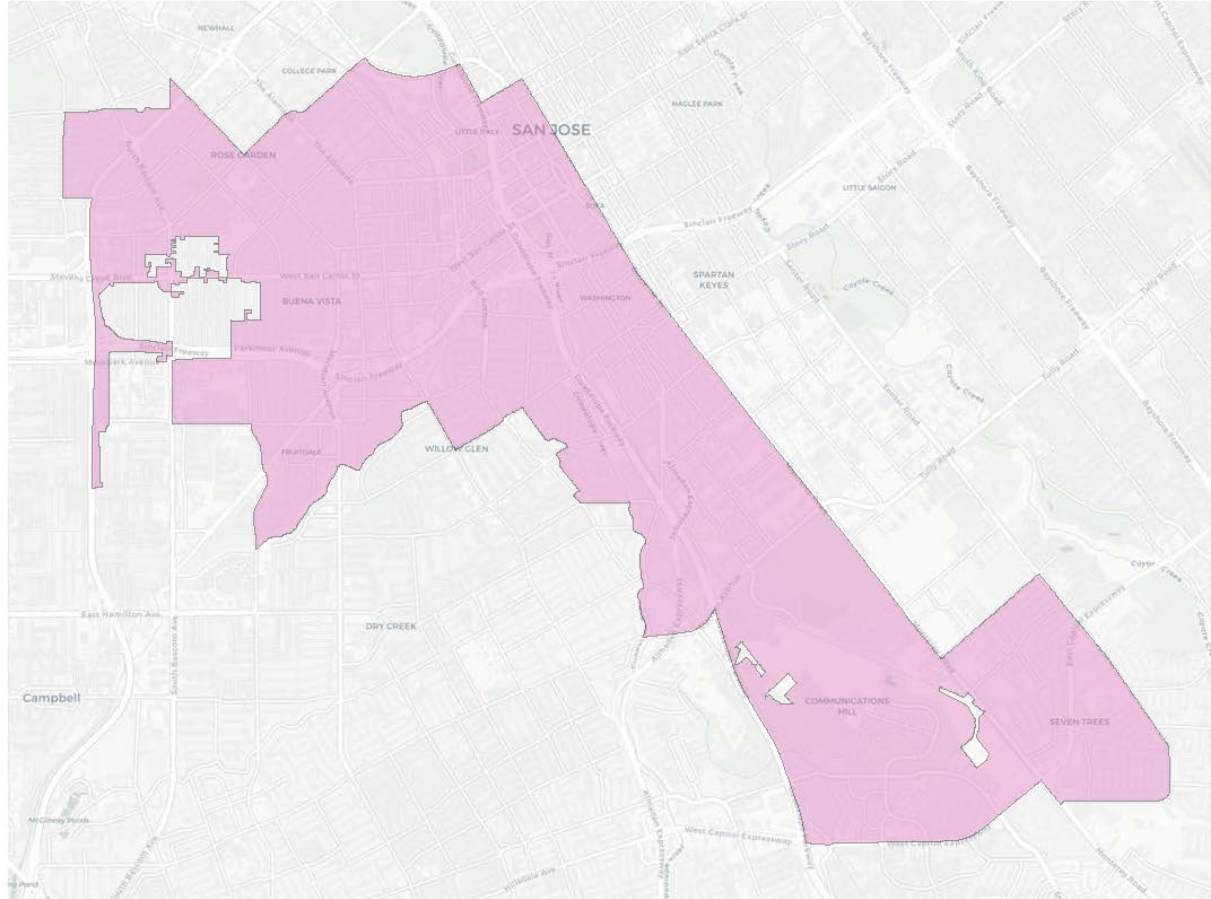


Citizen Voting Age Population

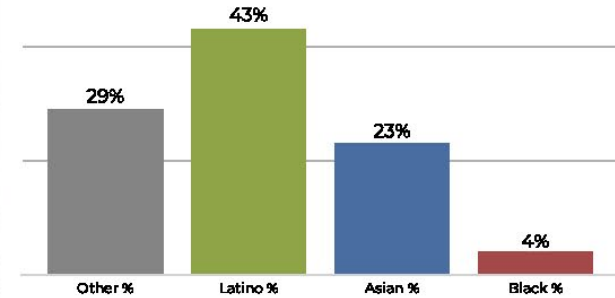


Population	Deviation	Deviation %	Other	Other %	Latino	Latino %	Asian	Asian %	Black	Black %
95,883	-5,685	-5.6%	15,500	16.2%	29,413	30.7%	48,466	50.5%	2,504	2.6%
Total CVAP	Other CVAP	Other CVAP %	Latino CVAP	Latino CVAP %	Asian CVAP	Asian CVAP %	Black CVAP	Black CVAP %		
58,601	13,407	22.9%	13,500	23.0%	29,330	50.1%	2,363	4.0%		

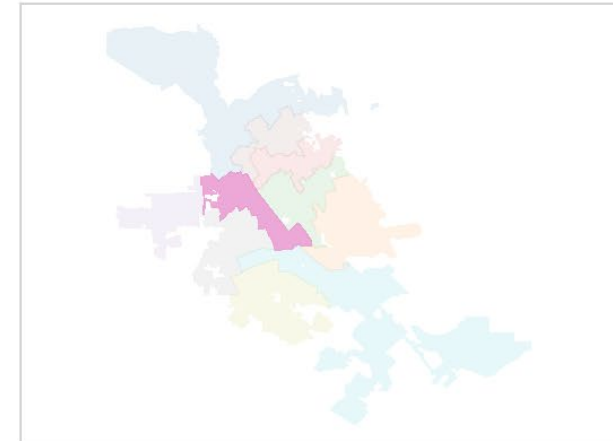
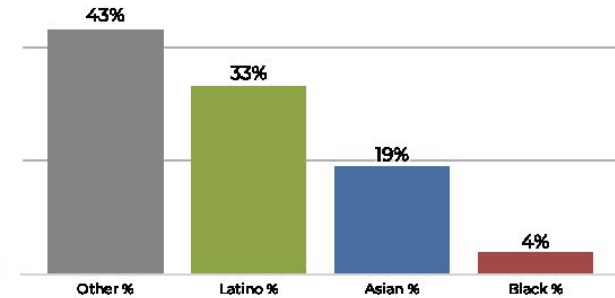
District G



2020 Census

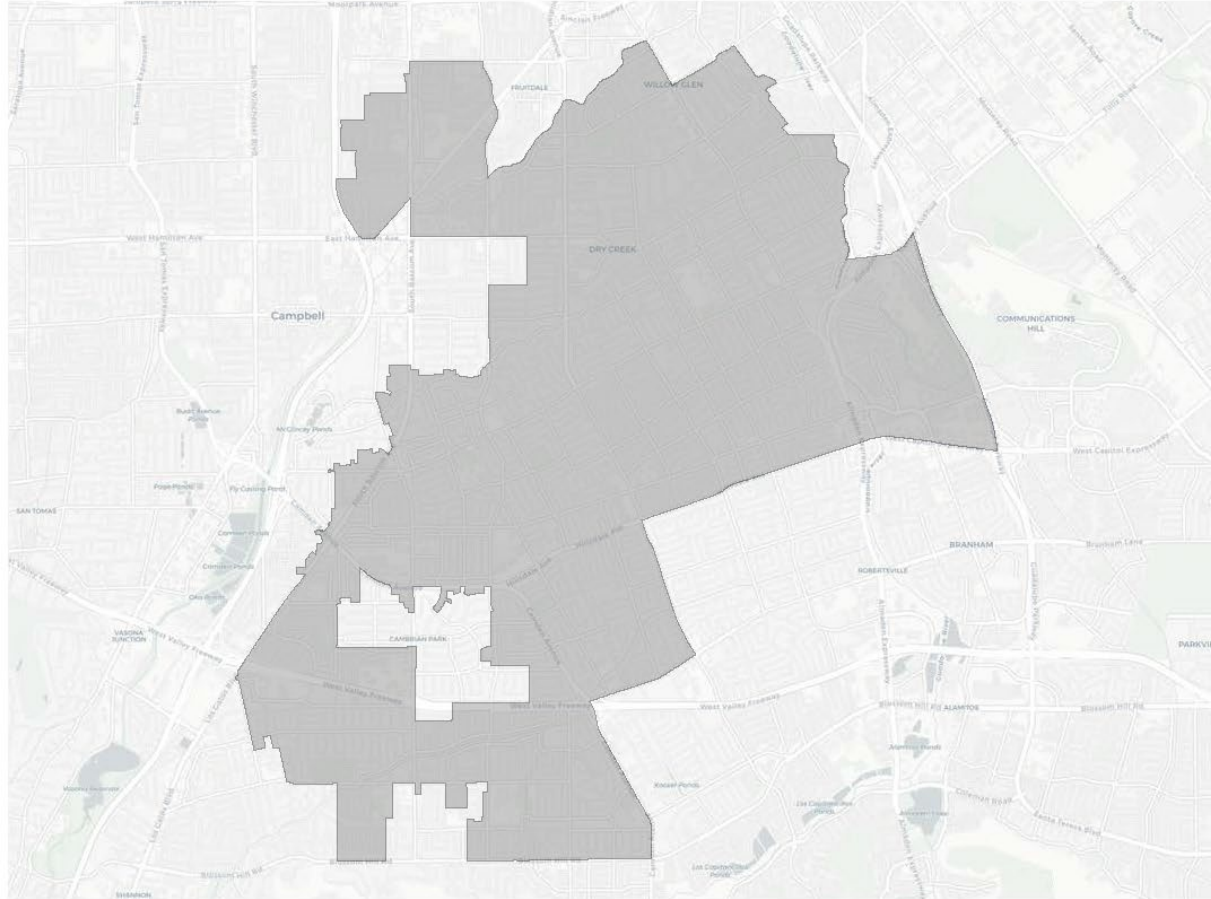


Citizen Voting Age Population

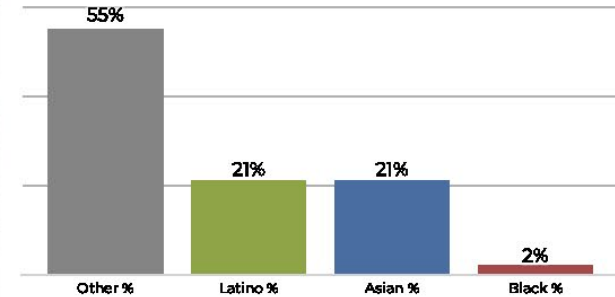


Population	Deviation	Deviation %	Other	Other %	Latino	Latino %	Asian	Asian %	Black	Black %
101,700	132	0.1%	30,286	29.8%	43,808	43.1%	23,437	23.0%	4,169	4.1%
Total CVAP	Other CVAP	Other CVAP %	Latino CVAP	Latino CVAP %	Asian CVAP	Asian CVAP %	Black CVAP	Black CVAP %		
60,852	26,371	43.3%	20,443	33.6%	11,601	19.1%	2,437	4.0%		

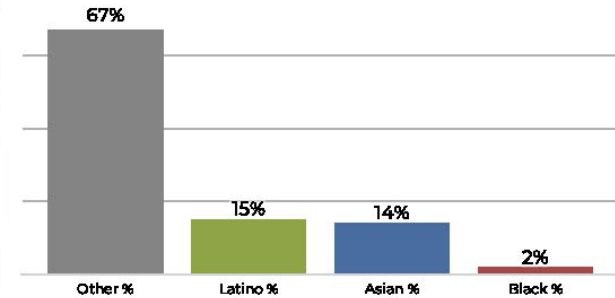
District H



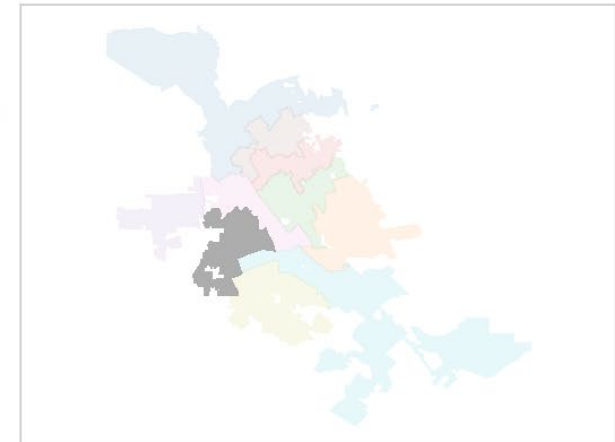
2020 Census



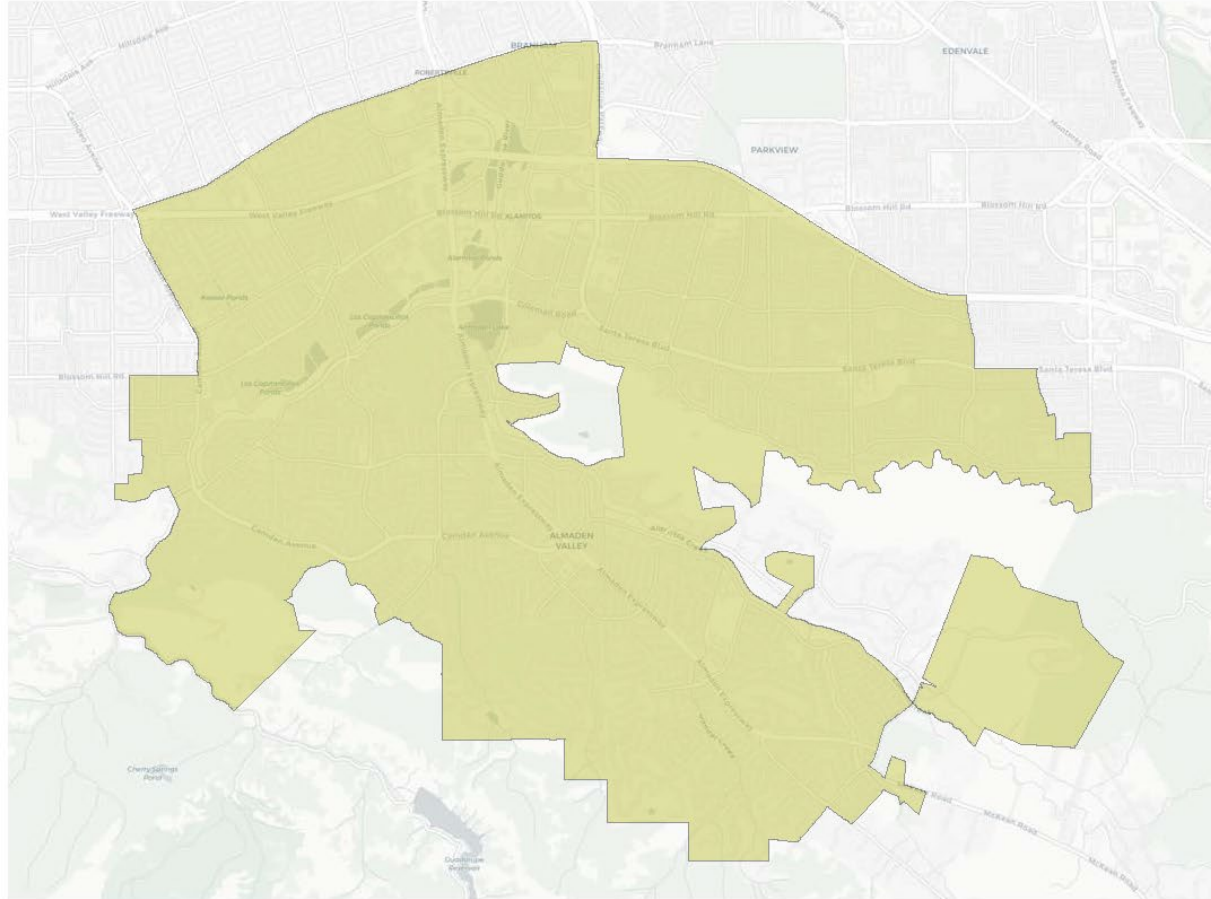
Citizen Voting Age Population



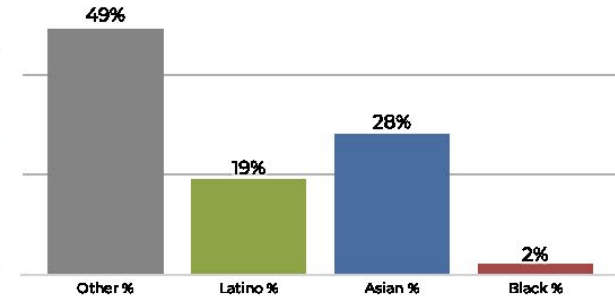
Population	Deviation	Deviation %	Other	Other %	Latino	Latino %	Asian	Asian %	Black	Black %
99,048	-2,520	-2.5%	54,452	55.0%	21,358	21.6%	20,880	21.1%	2,358	2.4%
Total CVAP	Other CVAP	Other CVAP %	Latino CVAP	Latino CVAP %	Asian CVAP	Asian CVAP %	Black CVAP	Black CVAP %		
65,779	44,113	67.1%	10,413	15.8%	9,359	14.2%	1,894	2.9%		



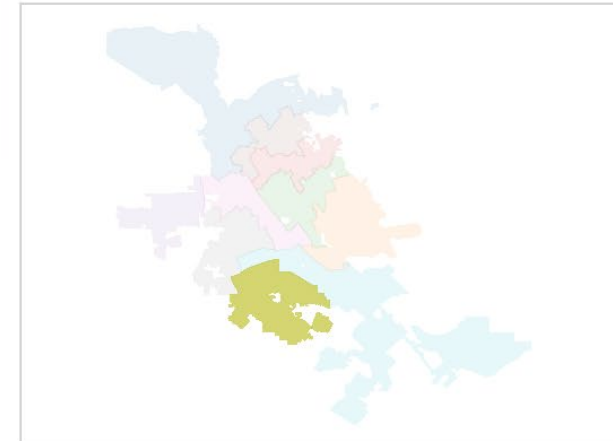
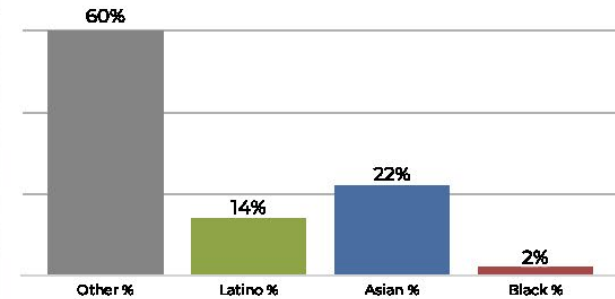
District I



2020 Census

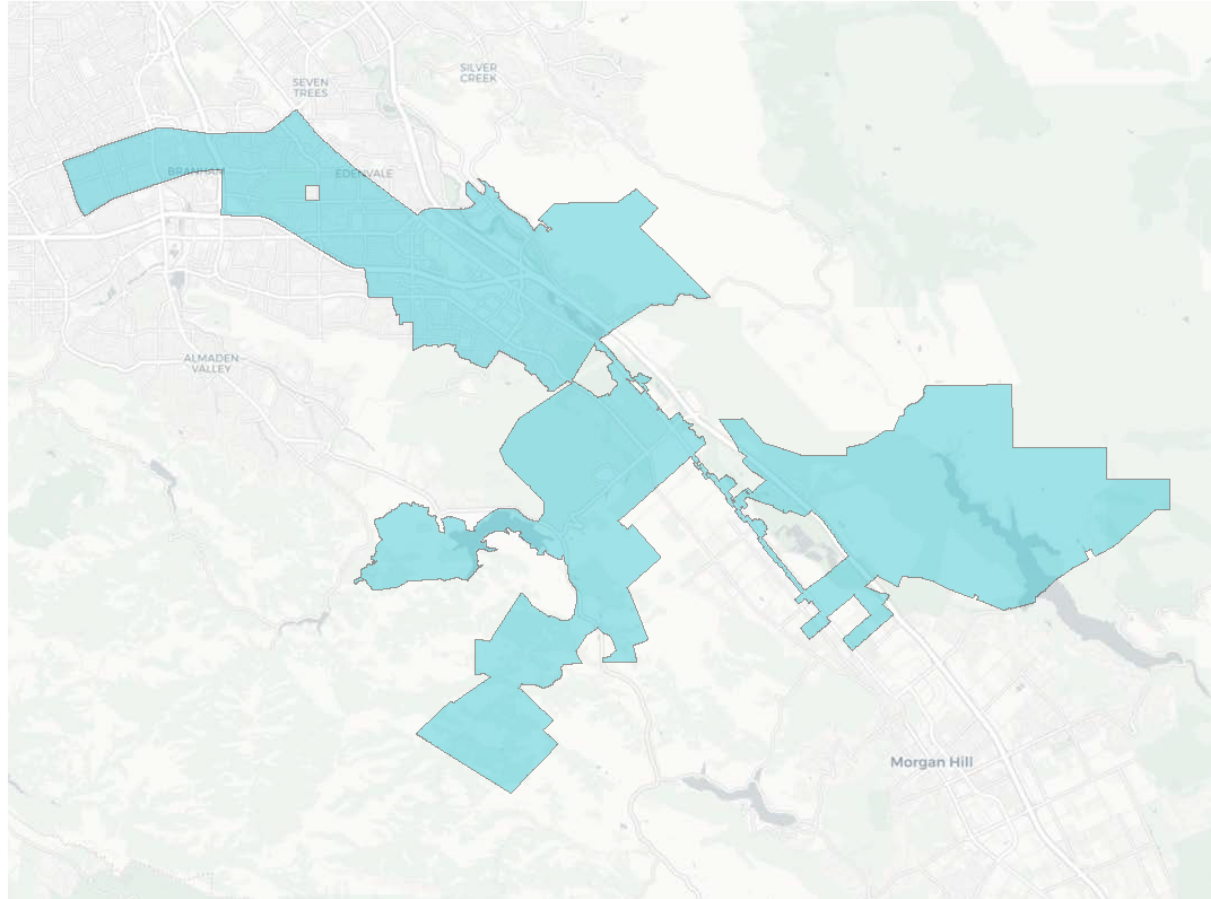


Citizen Voting Age Population

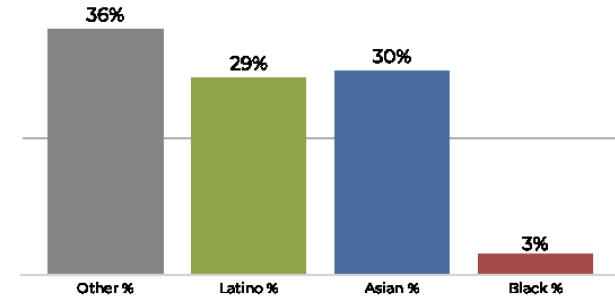


Population	Deviation	Deviation %	Other	Other %	Latino	Latino %	Asian	Asian %	Black	Black %
100,677	-891	-0.9%	49,578	49.2%	19,925	19.8%	28,874	28.7%	2,300	2.3%
Total CVAP	Other CVAP	Other CVAP %	Latino CVAP	Latino CVAP %	Asian CVAP	Asian CVAP %	Black CVAP	Black CVAP %		
66,694	39,986	60.0%	9,738	14.6%	15,031	22.5%	1,937	2.9%		

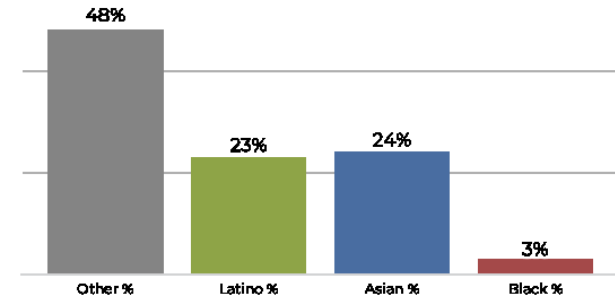
District J



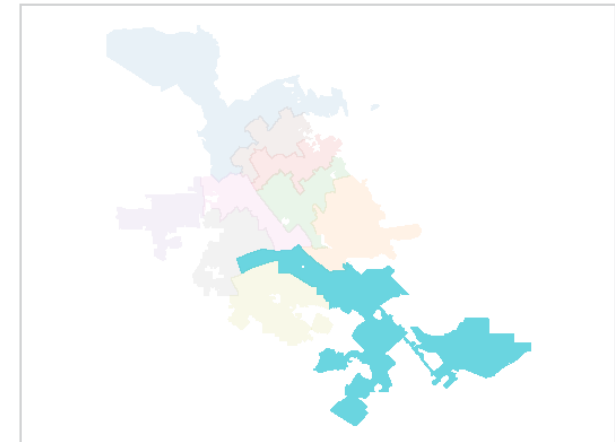
2020 Census

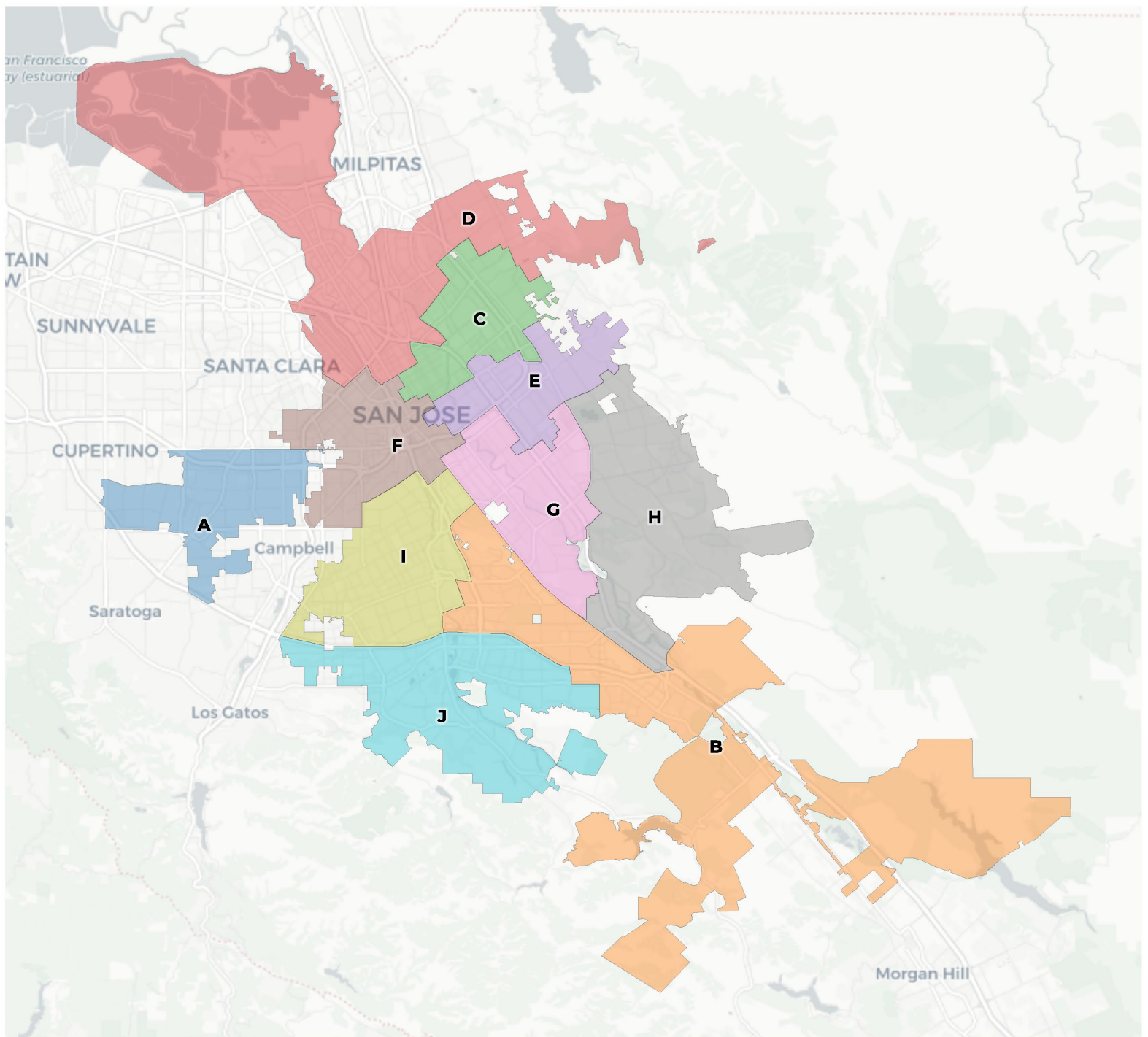


Citizen Voting Age Population



Population	Deviation	Deviation %	Other	Other %	Latino	Latino %	Asian	Asian %	Black	Black %
100,668	-900	-0.9%	37,055	36.8%	29,424	29.2%	30,679	30.5%	3,510	3.5%
Total CVAP	Other CVAP	Other CVAP %	Latino CVAP	Latino CVAP %	Asian CVAP	Asian CVAP %	Black CVAP	Black CVAP %		
66,383	31,977	48.2%	15,774	23.8%	16,111	24.3%	2,521	3.8%		





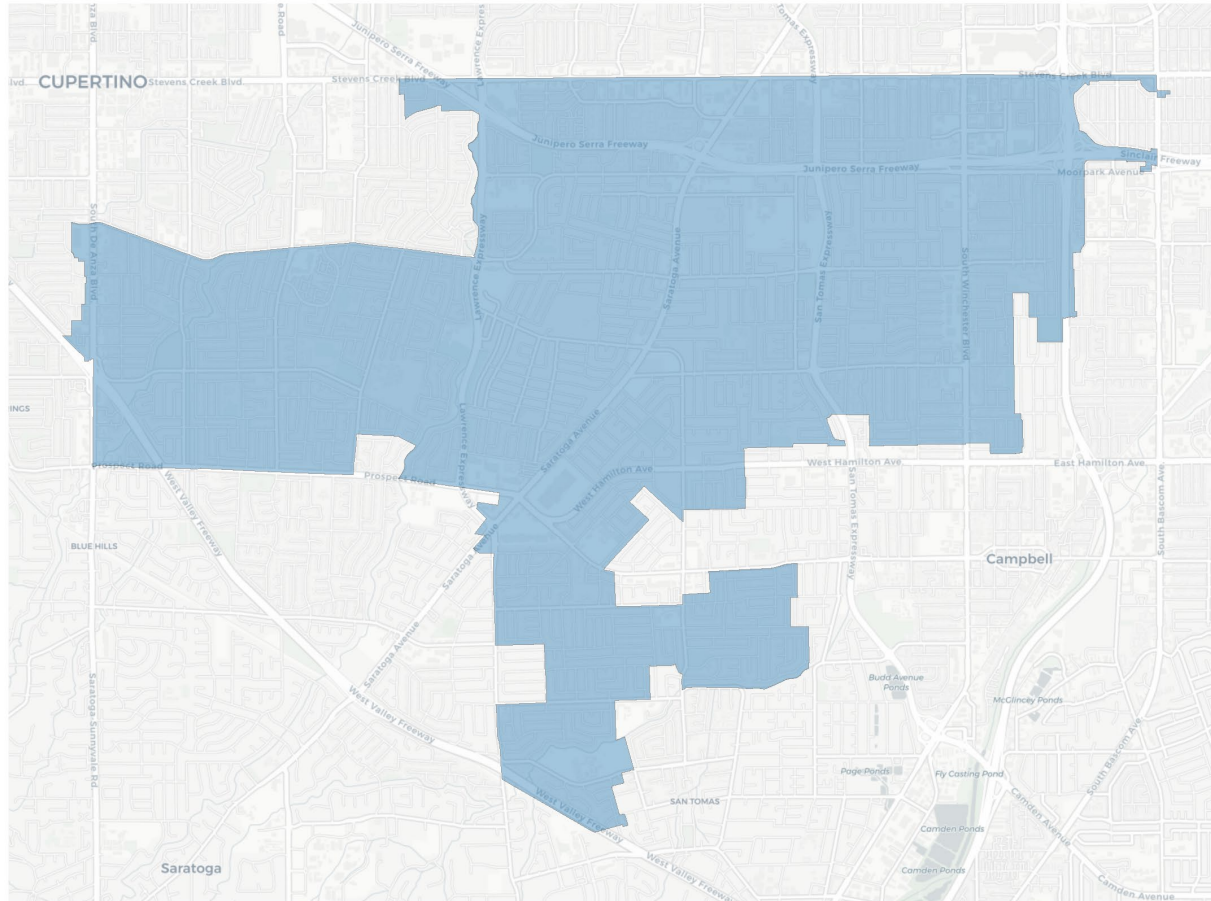
2020 Census

	A	B	C	D	E	F	G	H	I	J
Population	102,328	101,946	96,545	99,367	100,730	100,012	105,166	104,070	101,205	104,314
Deviation	760	378	-5,023	-2,201	-838	-1,556	3,598	2,502	-363	2,746
Deviation %	0.7%	0.4%	-4.9%	-2.2%	-0.8%	-1.5%	3.5%	2.5%	-0.4%	2.7%
Other	32,196	35,485	13,517	19,929	12,600	37,220	9,026	17,032	53,643	52,490
Other %	31.5%	34.8%	14.0%	20.1%	12.5%	37.2%	8.6%	16.4%	53.0%	50.3%
Latino	19,845	29,722	32,758	18,589	62,803	39,758	46,021	24,408	24,808	18,925
Latino %	19.4%	29.2%	33.9%	18.7%	62.3%	39.8%	43.8%	23.5%	24.5%	18.1%
Asian	47,183	32,734	48,083	58,350	23,251	18,634	47,792	60,132	19,907	31,031
Asian %	46.1%	32.1%	49.8%	58.7%	23.1%	18.6%	45.4%	57.8%	19.7%	29.7%
Black	3,104	4,005	2,187	2,499	2,076	4,400	2,327	2,498	2,847	1,868
Black %	3.0%	3.9%	2.3%	2.5%	2.1%	4.4%	2.2%	2.4%	2.8%	1.8%

Citizen Voting Age Population (CVAP)

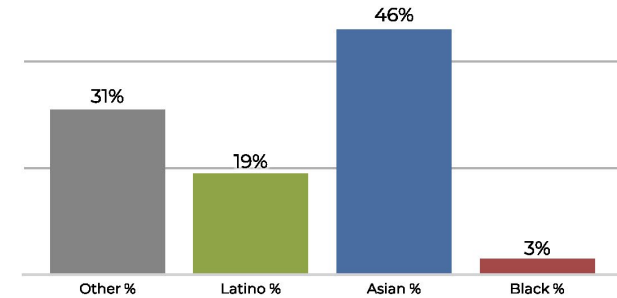
	A	B	C	D	E	F	G	H	I	J
Total CVAP	58,935	65,288	59,441	52,830	59,923	63,553	62,321	71,023	67,219	69,008
Other CVAP	28,680	30,500	12,017	14,559	11,224	32,126	7,347	15,877	43,633	42,437
Other CVAP %	48.7%	46.7%	20.2%	27.6%	18.7%	50.5%	11.8%	22.4%	64.9%	61.5%
Latino CVAP	8,049	16,076	15,732	9,898	31,328	18,843	20,998	15,448	11,894	9,208
Latino CVAP %	13.7%	24.6%	26.5%	18.7%	52.3%	29.6%	33.7%	21.8%	17.7%	13.3%
Asian CVAP	20,158	16,009	29,724	26,289	15,778	9,286	32,151	37,339	9,972	15,708
Asian CVAP %	34.2%	24.5%	50.0%	49.8%	26.3%	14.6%	51.6%	52.6%	14.8%	22.8%
Black CVAP	2,046	2,702	1,968	2,084	1,592	3,298	1,825	2,358	1,719	1,656
Black CVAP %	3.5%	4.1%	3.3%	3.9%	2.7%	5.2%	2.9%	3.3%	2.6%	2.4%

District A

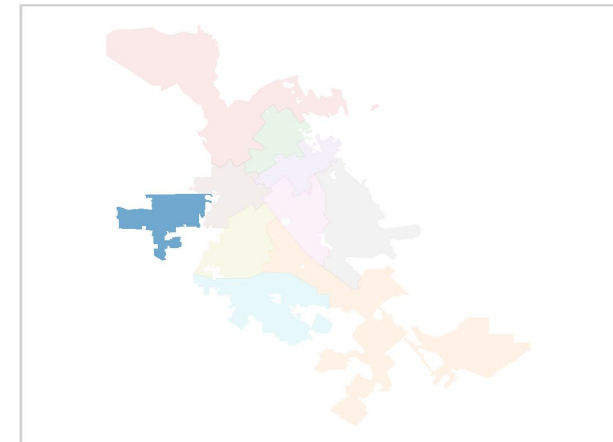
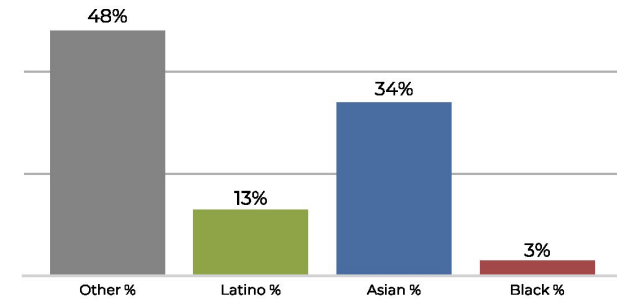


Population	Deviation	Deviation %	Other	Other %	Latino	Latino %	Asian	Asian %	Black	Black %
102,328	760	0.7%	32,196	31.5%	19,845	19.4%	47,183	46.1%	3,104	3.0%
Total CVAP	Other CVAP	Other CVAP %	Latino CVAP	Latino CVAP %	Asian CVAP	Asian CVAP %	Black CVAP	Black CVAP %		
58,935	28,680	48.7%	8,049	13.7%	20,158	34.2%	2,046	3.5%		

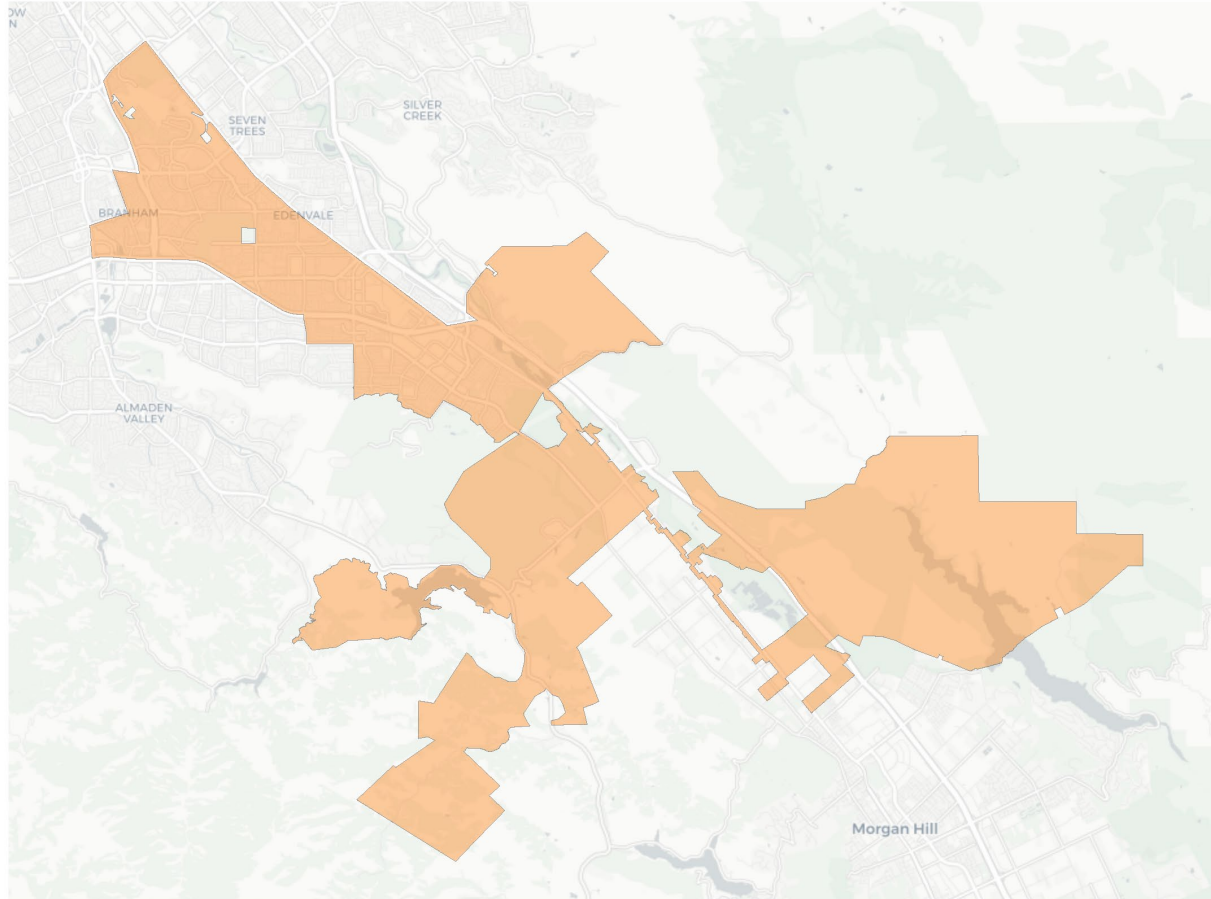
2020 Census



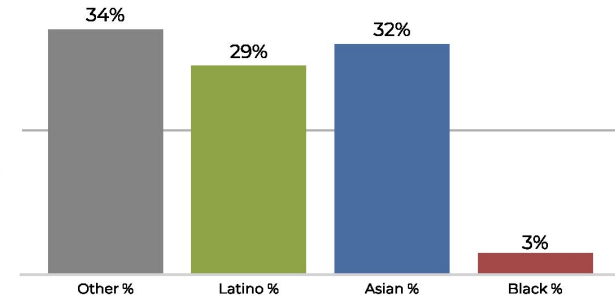
Citizen Voting Age Population



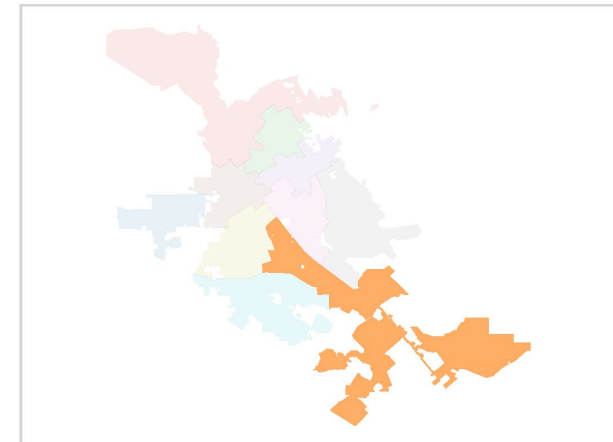
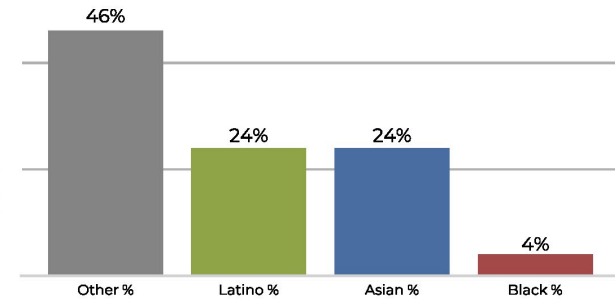
District B



2020 Census

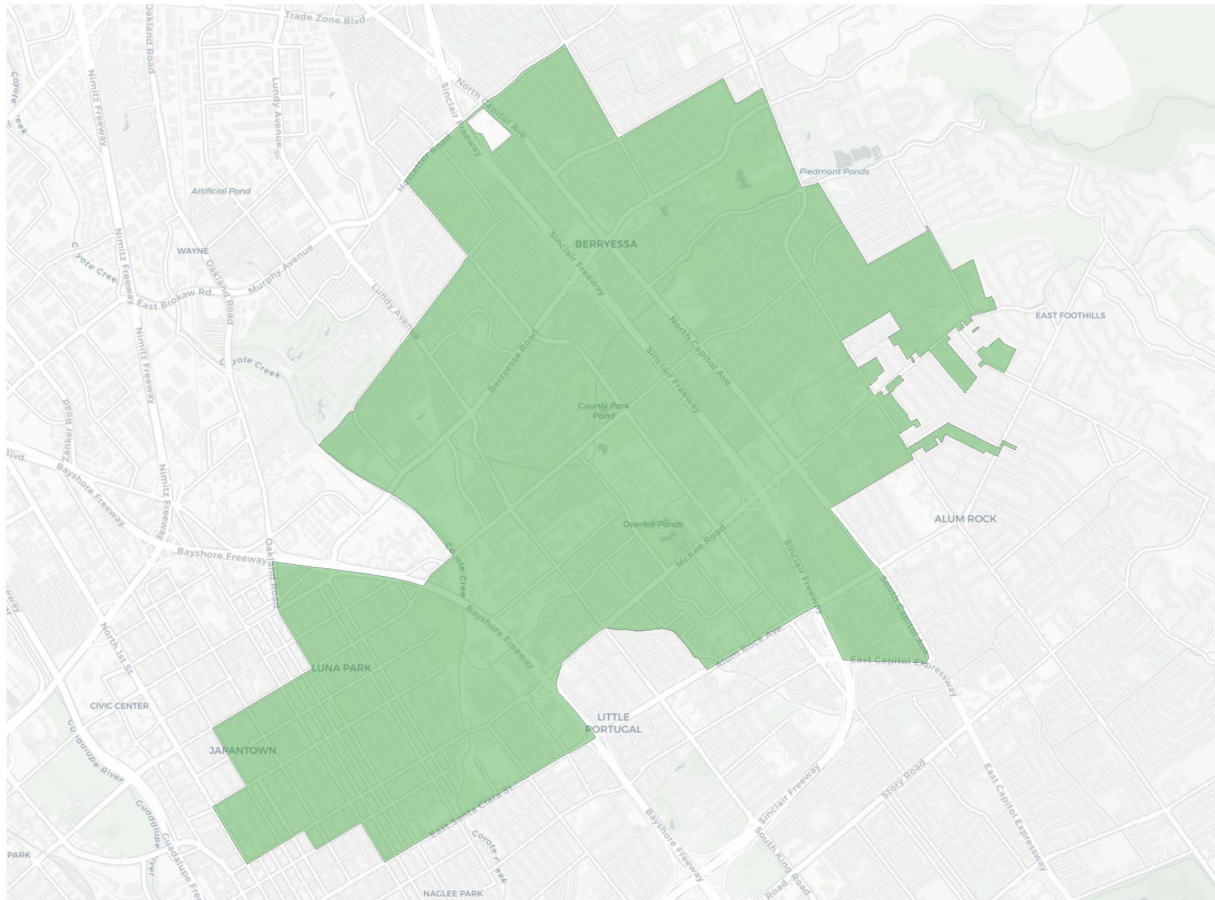


Citizen Voting Age Population



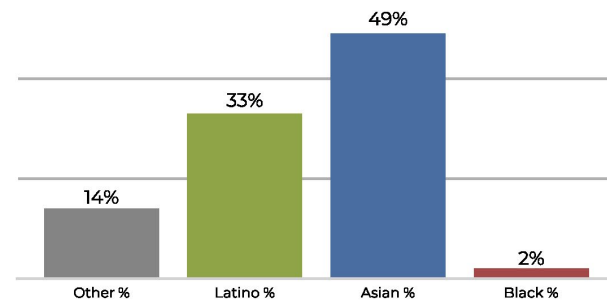
Population	Deviation	Deviation %	Other	Other %	Latino	Latino %	Asian	Asian %	Black	Black %
101,946	378	0.4%	35,485	34.8%	29,722	29.2%	32,734	32.1%	4,005	3.9%
Total CVAP	Other CVAP	Other CVAP %	Latino CVAP	Latino CVAP %	Asian CVAP	Asian CVAP %	Black CVAP	Black CVAP %		
65,288	30,500	46.7%	16,076	24.6%	16,009	24.5%	2,702	4.1%		

District C

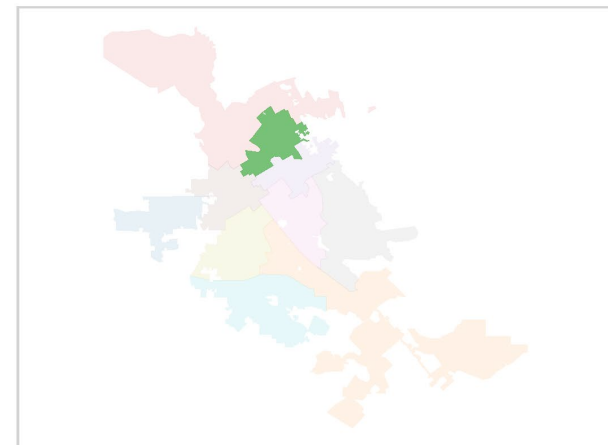
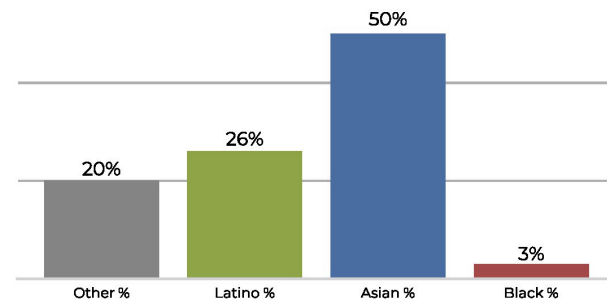


Population	Deviation	Deviation %	Other	Other %	Latino	Latino %	Asian	Asian %	Black	Black %
96,545	-5,023	-4.9%	13,517	14.0%	32,758	33.9%	48,083	49.8%	2,187	2.3%
Total CVAP	Other CVAP	Other CVAP %	Latino CVAP	Latino CVAP %	Asian CVAP	Asian CVAP %	Black CVAP	Black CVAP %		
59,441	12,017	20.2%	15,732	26.5%	29,724	50.0%	1,968	3.3%		

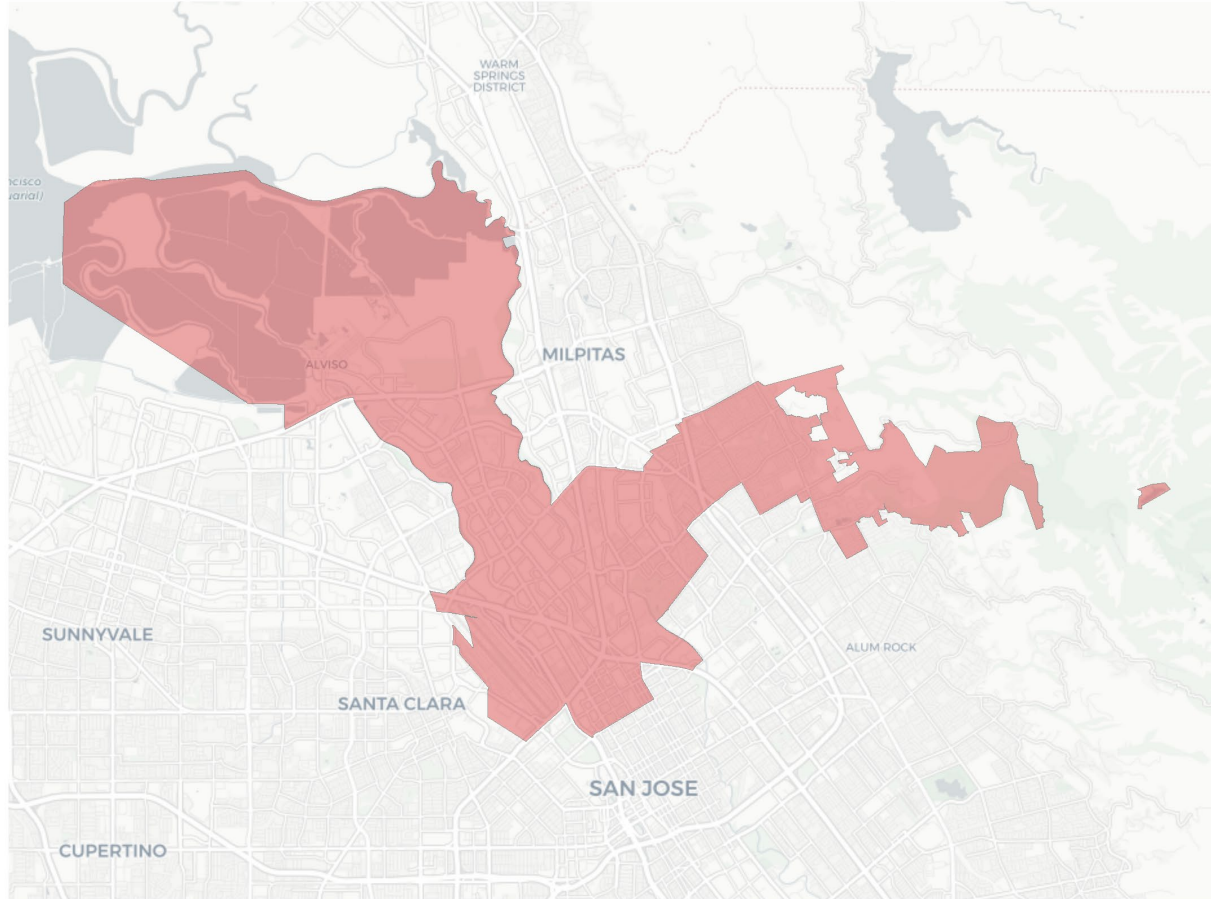
2020 Census



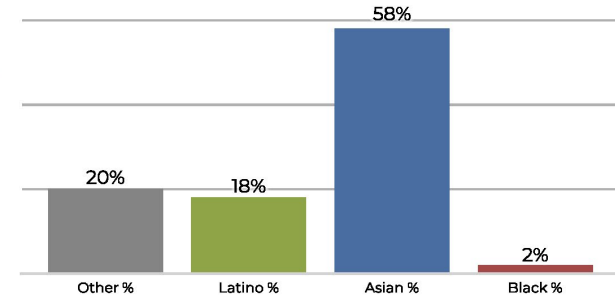
Citizen Voting Age Population



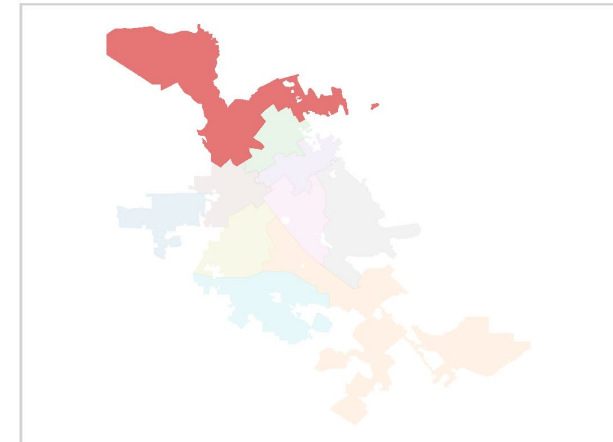
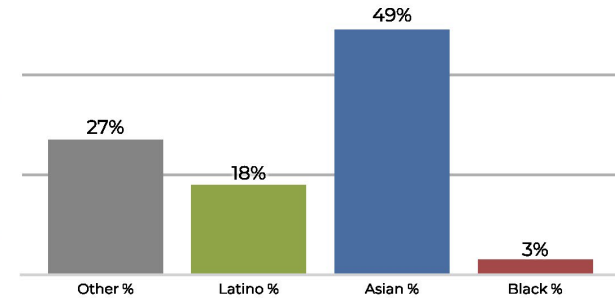
District D



2020 Census

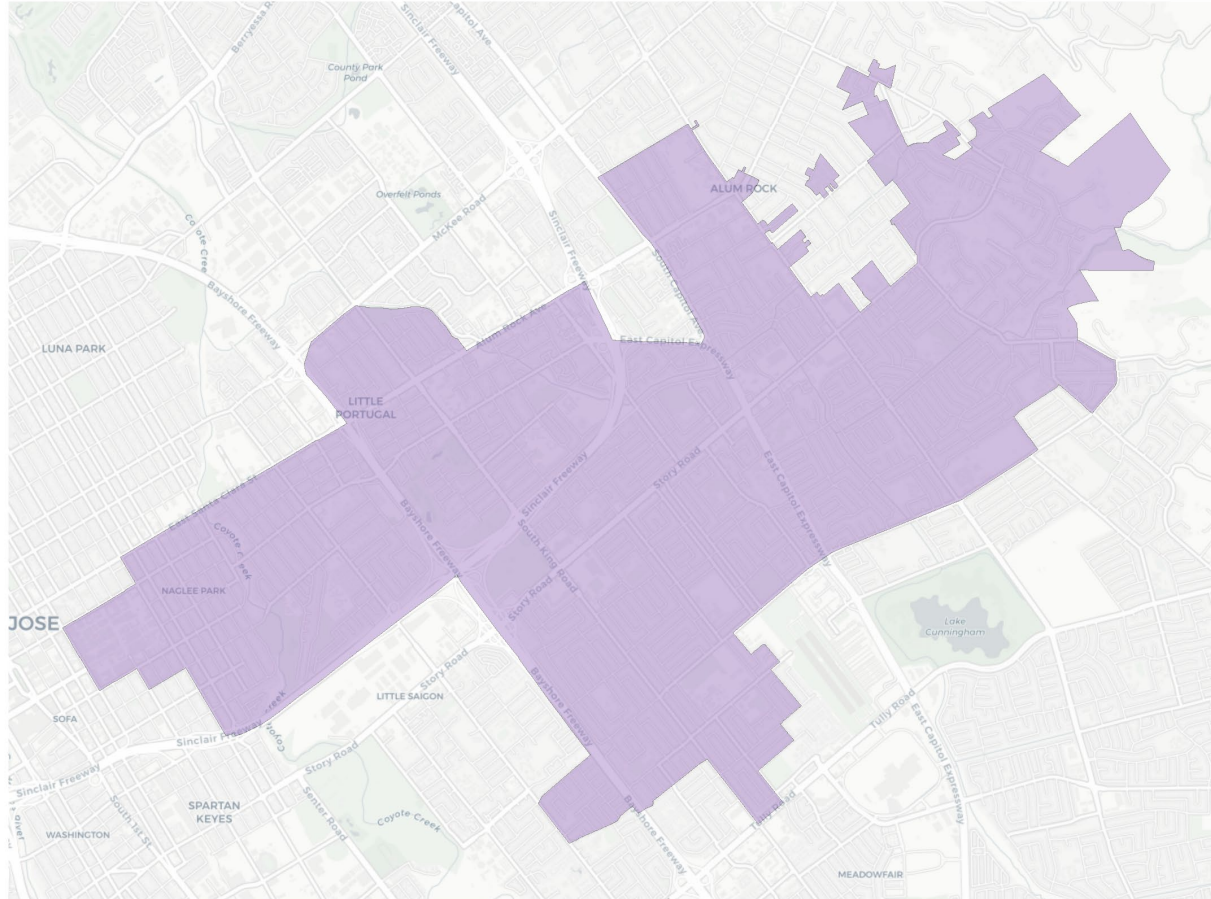


Citizen Voting Age Population



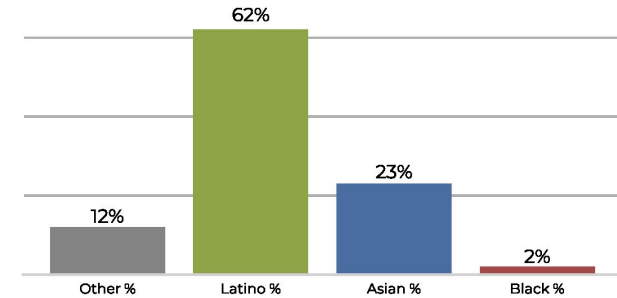
Population	Deviation	Deviation %	Other	Other %	Latino	Latino %	Asian	Asian %	Black	Black %
99,367	-2,201	-2.2%	19,929	20.1%	18,589	18.7%	58,350	58.7%	2,499	2.5%
Total CVAP	Other CVAP	Other CVAP %	Latino CVAP	Latino CVAP %	Asian CVAP	Asian CVAP %	Black CVAP	Black CVAP %		
52,830	14,559	27.6%	9,898	18.7%	26,289	49.8%	2,084	3.9%		

District E

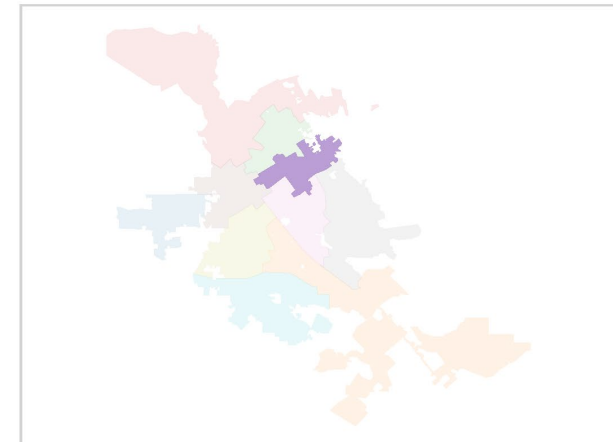
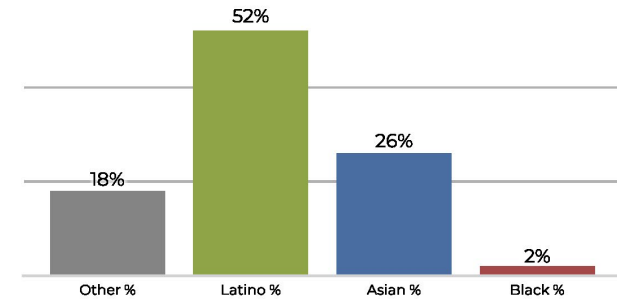


Population	Deviation	Deviation %	Other	Other %	Latino	Latino %	Asian	Asian %	Black	Black %
100,730	-838	-0.8%	12,600	12.5%	62,803	62.3%	23,251	23.1%	2,076	2.1%
Total CVAP	Other CVAP	Other CVAP %	Latino CVAP	Latino CVAP %	Asian CVAP	Asian CVAP %	Black CVAP	Black CVAP %		
59,923	11,224	18.7%	31,328	52.3%	15,778	26.3%	1,592	2.7%		

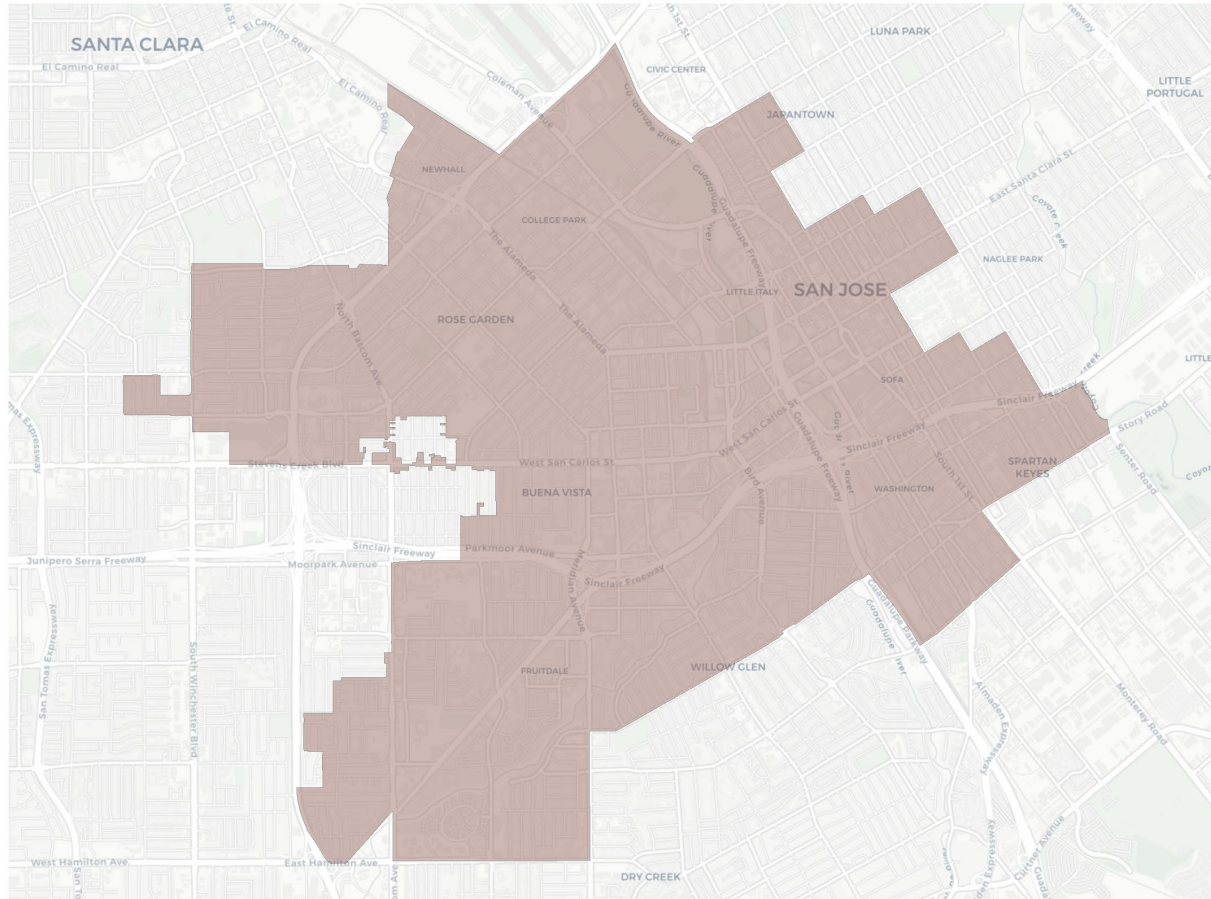
2020 Census



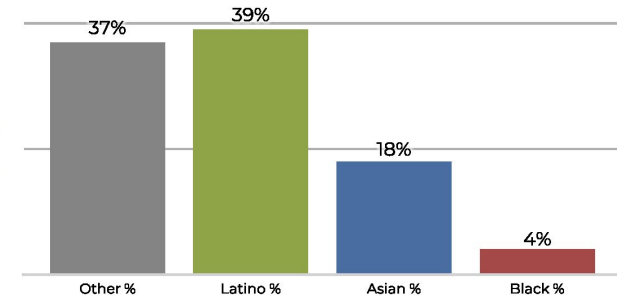
Citizen Voting Age Population



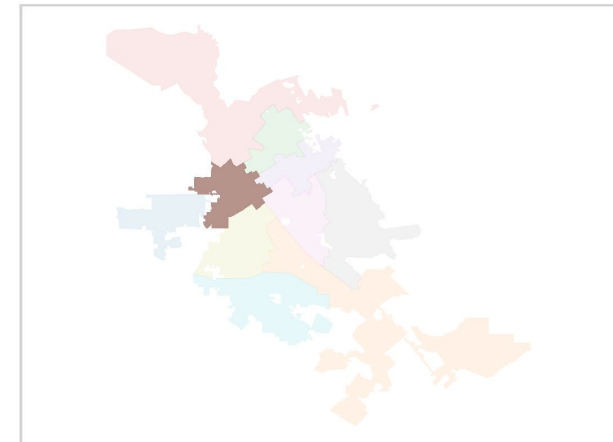
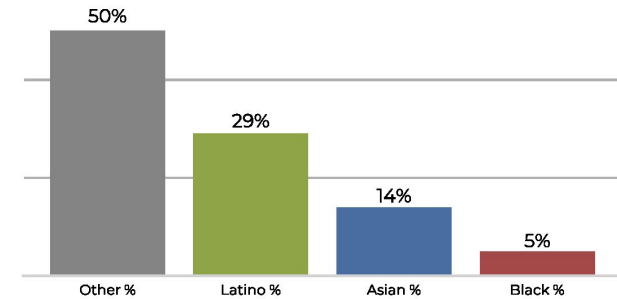
District F



2020 Census

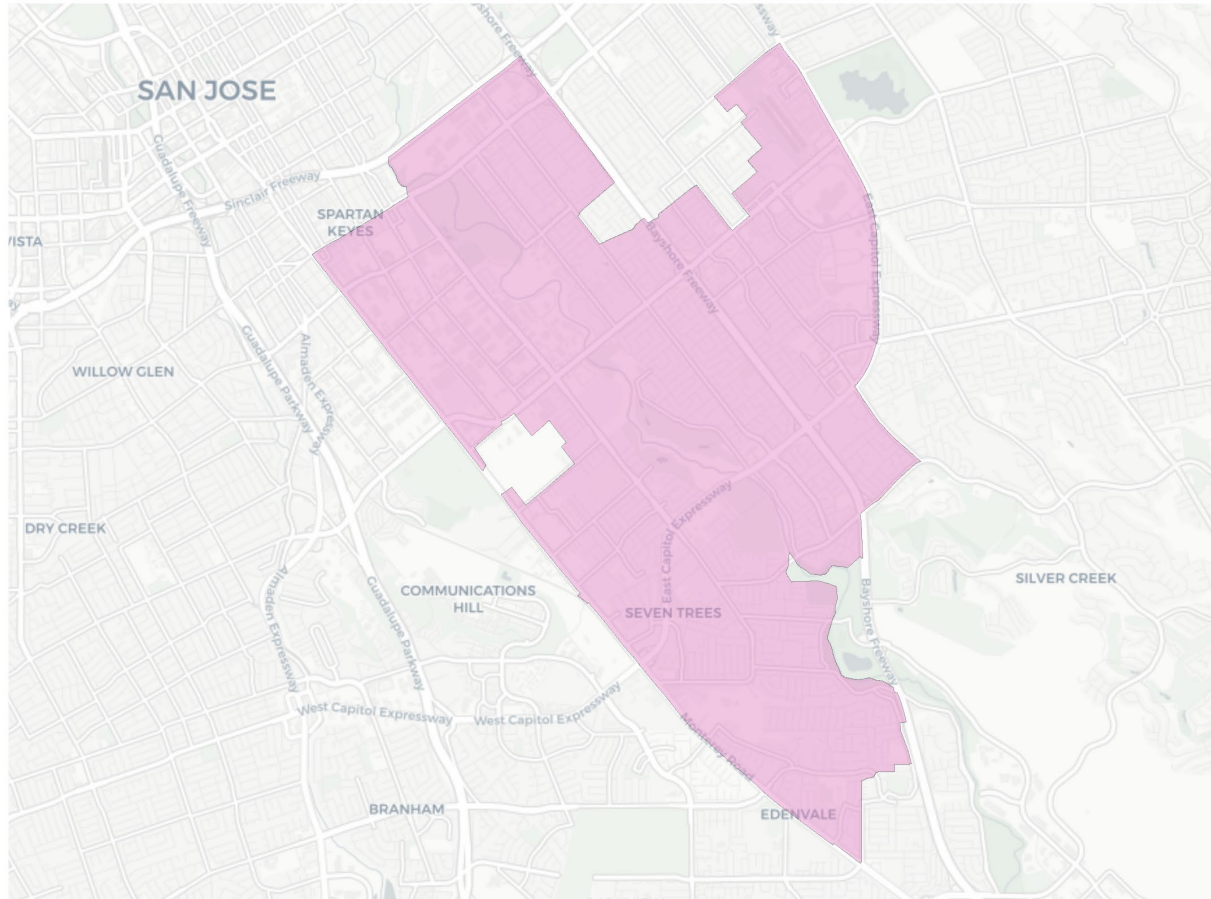


Citizen Voting Age Population

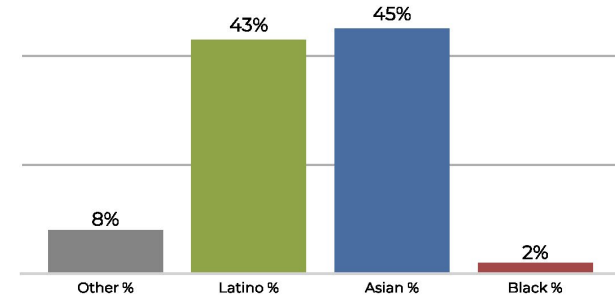


Population	Deviation	Deviation %	Other	Other %	Latino	Latino %	Asian	Asian %	Black	Black %
100,012	-1,556	-1.5%	37,220	37.2%	39,758	39.8%	18,634	18.6%	4,400	4.4%
Total CVAP	Other CVAP	Other CVAP %	Latino CVAP	Latino CVAP %	Asian CVAP	Asian CVAP %	Black CVAP	Black CVAP %		
63,553	32,126	50.5%	18,843	29.6%	9,286	14.6%	3,298	5.2%		

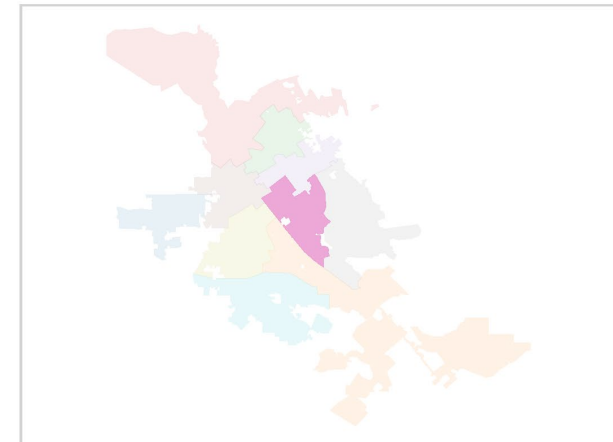
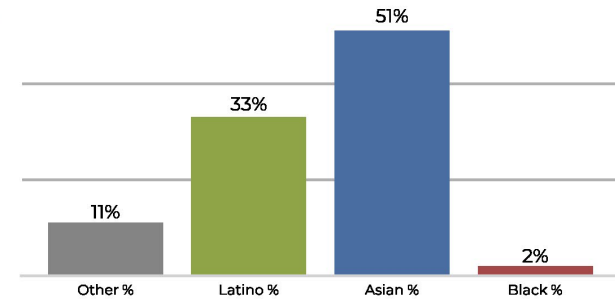
District G



2020 Census

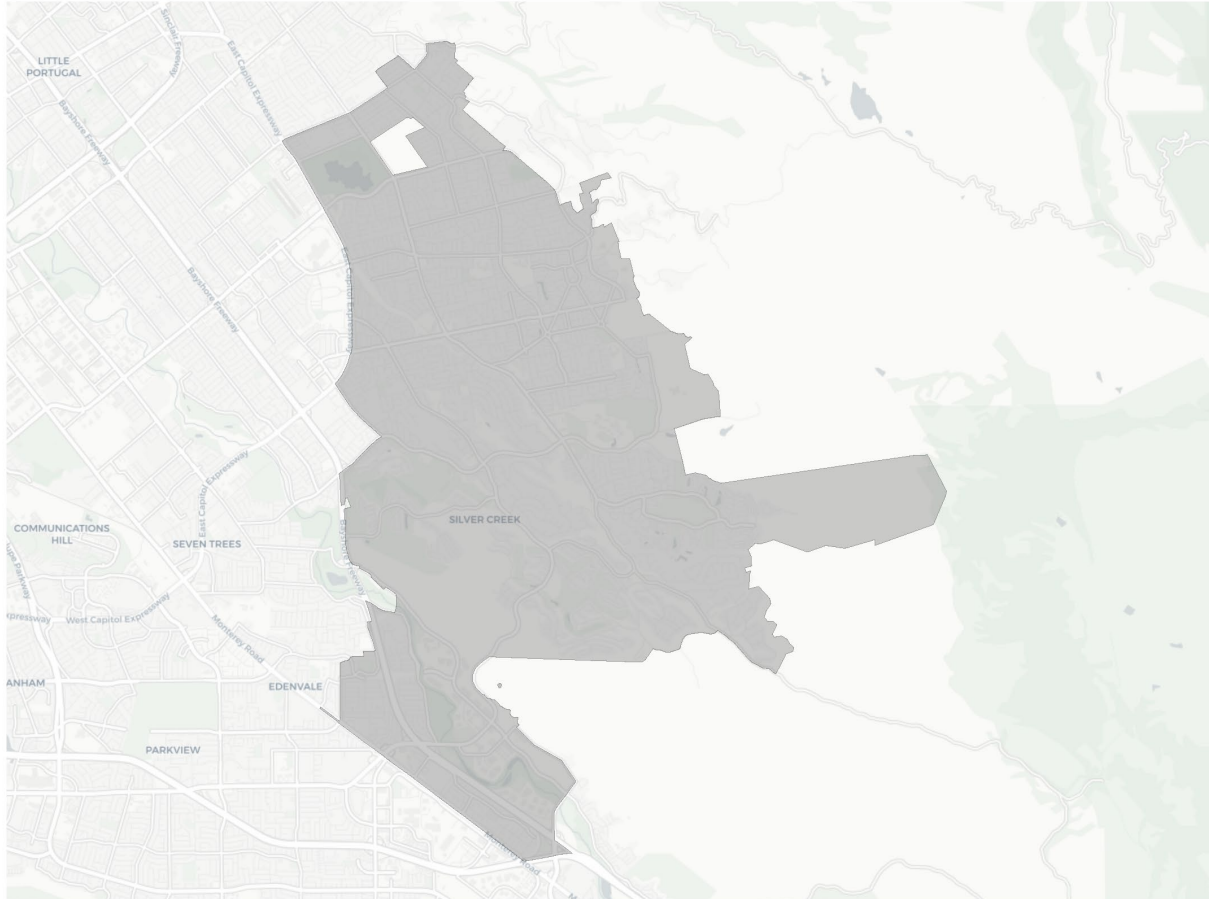


Citizen Voting Age Population

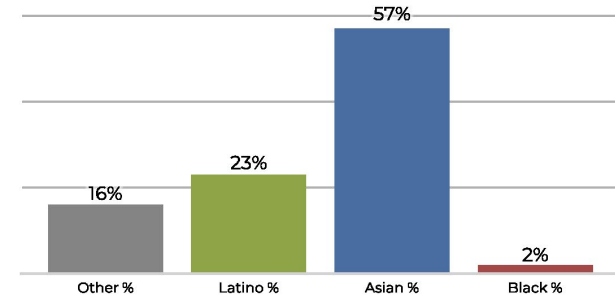


Population	Deviation	Deviation %	Other	Other %	Latino	Latino %	Asian	Asian %	Black	Black %
105,166	3,598	3.5%	9,026	8.6%	46,021	43.8%	47,792	45.4%	2,327	2.2%
Total CVAP	Other CVAP	Other CVAP %	Latino CVAP	Latino CVAP %	Asian CVAP	Asian CVAP %	Black CVAP	Black CVAP %		
62,321	7,347	11.8%	20,998	33.7%	32,151	51.6%	1,825	2.9%		

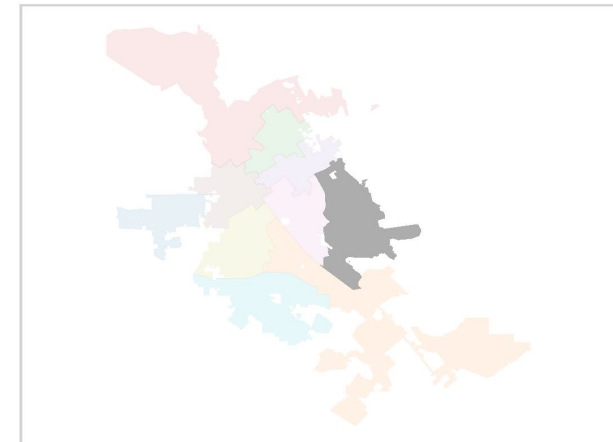
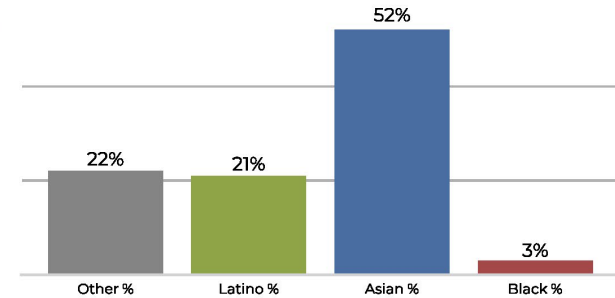
District H



2020 Census

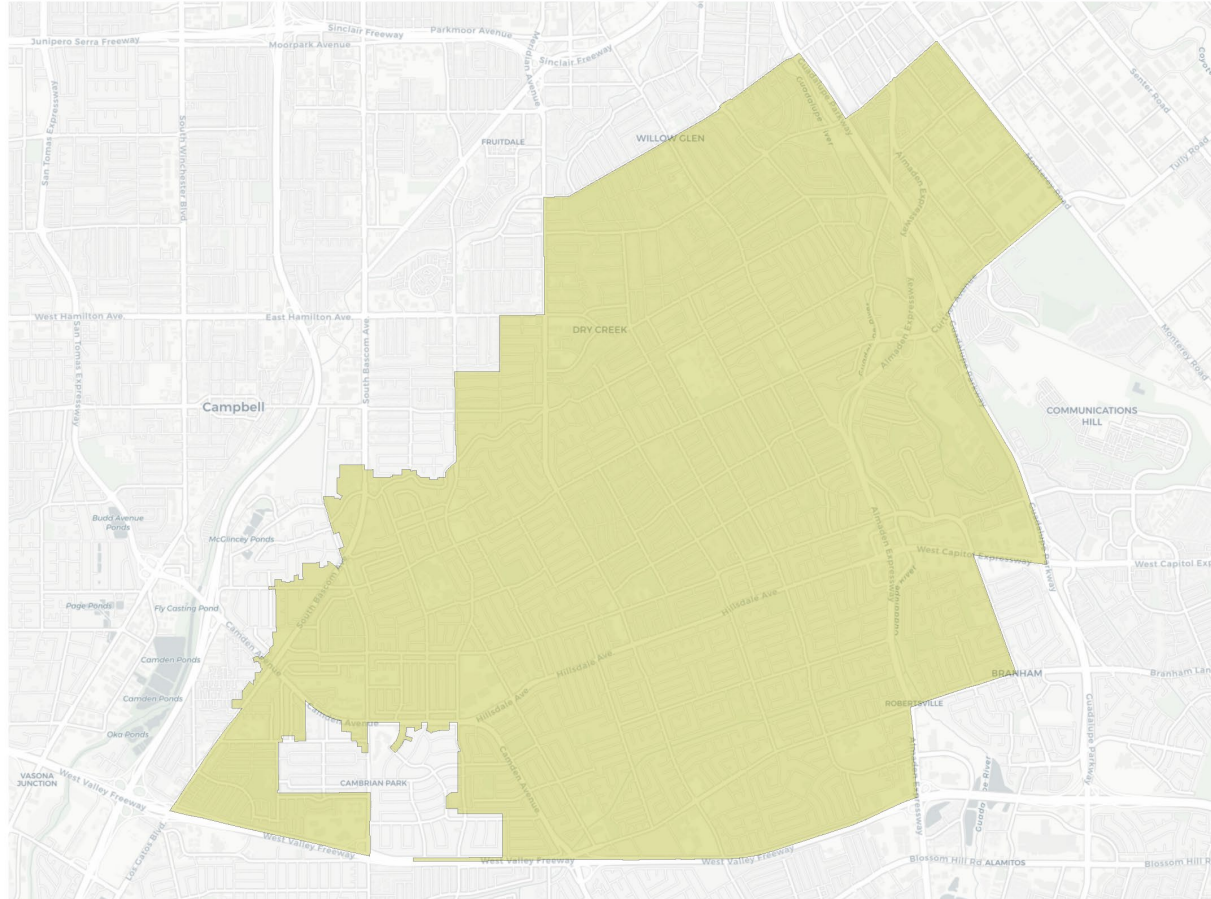


Citizen Voting Age Population

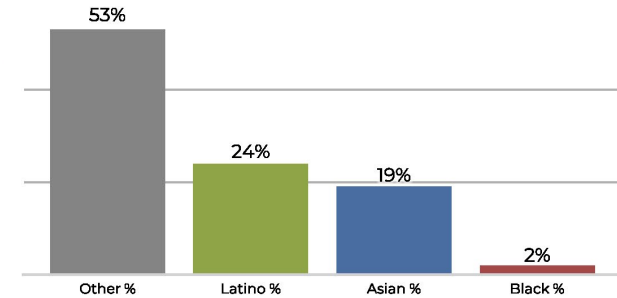


Population	Deviation	Deviation %	Other	Other %	Latino	Latino %	Asian	Asian %	Black	Black %
104,070	2,502	2.5%	17,032	16.4%	24,408	23.5%	60,132	57.8%	2,498	2.4%
Total CVAP	Other CVAP	Other CVAP %	Latino CVAP	Latino CVAP %	Asian CVAP	Asian CVAP %	Black CVAP	Black CVAP %		
71,023	15,877	22.4%	15,448	21.8%	37,339	52.6%	2,358	3.3%		

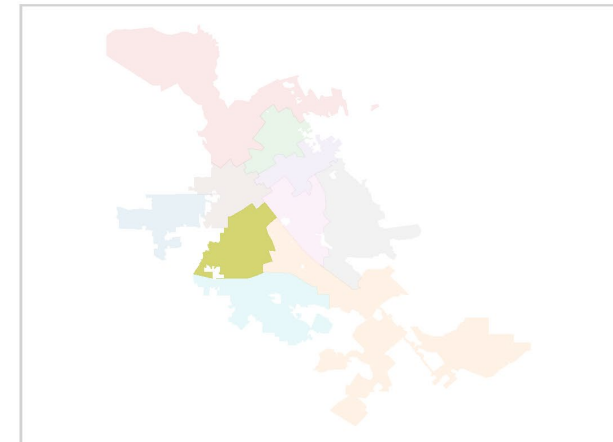
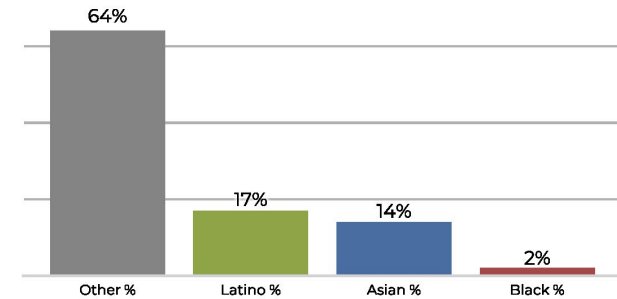
District I



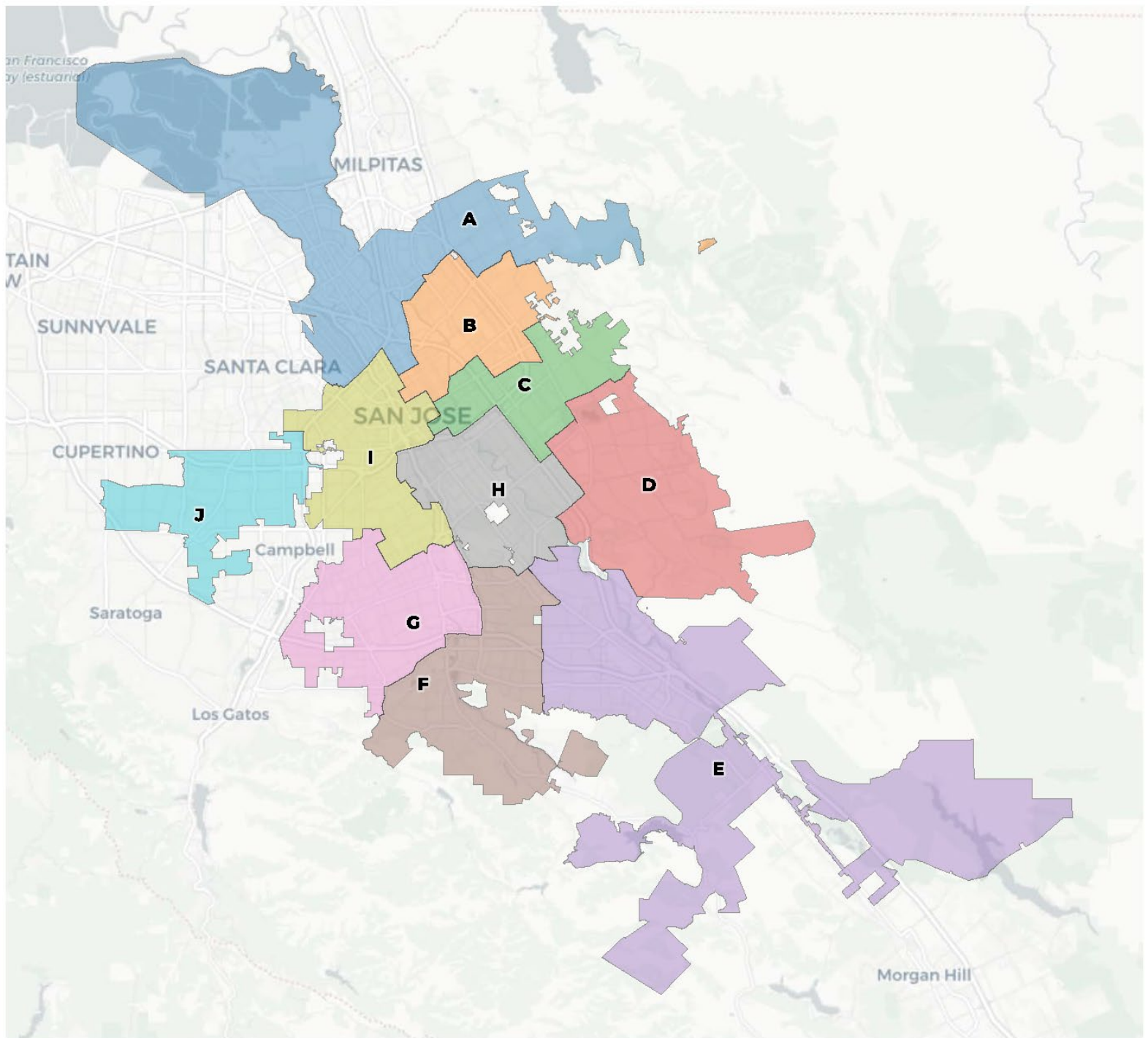
2020 Census



Citizen Voting Age Population



Population	Deviation	Deviation %	Other	Other %	Latino	Latino %	Asian	Asian %	Black	Black %
101,205	-363	-0.4%	53,643	53.0%	24,808	24.5%	19,907	19.7%	2,847	2.8%
Total CVAP	Other CVAP	Other CVAP %	Latino CVAP	Latino CVAP %	Asian CVAP	Asian CVAP %	Black CVAP	Black CVAP %		
67,219	43,633	64.9%	11,894	17.7%	9,972	14.8%	1,719	2.6%		



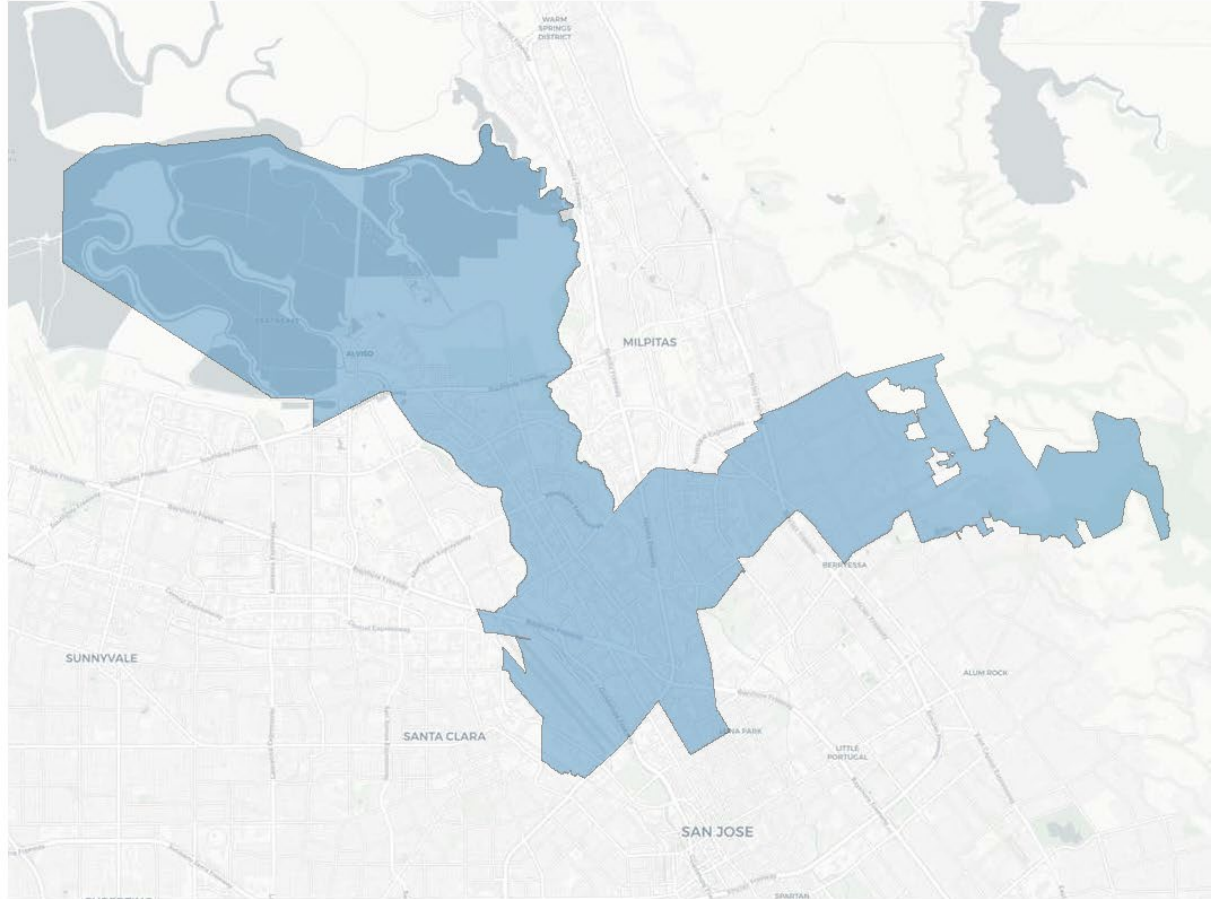
2020 Census

	A	B	C	D	E	F	G	H	I	J
Population	95,390	103,232	101,587	102,679	103,731	96,848	102,912	102,725	102,954	103,625
Deviation	-6,178	1,664	19	1,111	2,163	-4,720	1,344	1,157	1,386	2,057
Deviation %	-6.1%	1.6%	0.0%	1.1%	2.1%	-4.6%	1.3%	1.1%	1.4%	2.0%
Other	19,270	13,988	13,339	15,388	30,388	42,734	54,521	14,364	46,271	32,875
Other %	20.2%	13.6%	13.1%	15.0%	29.3%	44.1%	53.0%	14.0%	44.9%	31.7%
Latino	16,903	36,119	63,023	21,008	37,252	20,795	21,783	47,279	33,370	20,105
Latino %	17.7%	35.0%	62.0%	20.5%	35.9%	21.5%	21.2%	46.0%	32.4%	19.4%
Asian	56,861	50,859	22,972	64,175	32,612	30,854	24,048	38,417	18,775	47,524
Asian %	59.6%	49.3%	22.6%	62.5%	31.4%	31.9%	23.4%	37.4%	18.2%	45.9%
Black	2,356	2,266	2,253	2,108	3,479	2,465	2,560	2,665	4,538	3,121
Black %	2.5%	2.2%	2.2%	2.1%	3.4%	2.5%	2.5%	2.6%	4.4%	3.0%

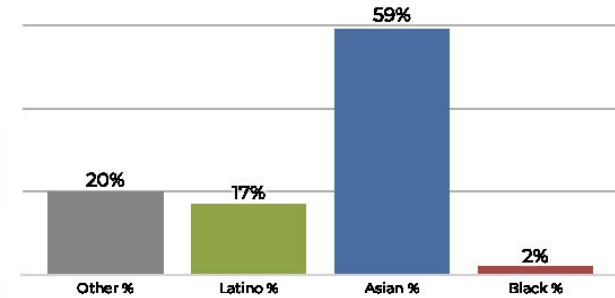
Citizen Voting Age Population (CVAP)

	A	B	C	D	E	F	G	H	I	J
Total CVAP	50,515	62,342	60,166	71,657	65,125	65,066	68,049	59,214	67,414	59,990
Other CVAP	13,980	12,488	11,597	14,437	25,901	35,078	44,510	12,104	39,101	29,204
Other CVAP %	27.7%	20.0%	19.3%	20.1%	39.8%	53.9%	65.4%	20.4%	58.0%	48.7%
Latino CVAP	9,164	16,692	31,038	14,810	19,105	10,698	10,578	21,206	15,834	8,350
Latino CVAP %	18.1%	26.8%	51.6%	20.7%	29.3%	16.4%	15.5%	35.8%	23.5%	13.9%
Asian CVAP	25,370	31,194	15,860	40,200	17,895	16,898	11,086	24,478	9,096	20,340
Asian CVAP %	50.2%	50.0%	26.4%	56.1%	27.5%	26.0%	16.3%	41.3%	13.5%	33.9%
Black CVAP	2,001	1,968	1,672	2,211	2,225	2,392	1,875	1,427	3,383	2,097
Black CVAP %	4.0%	3.2%	2.8%	3.1%	3.4%	3.7%	2.8%	2.4%	5.0%	3.5%

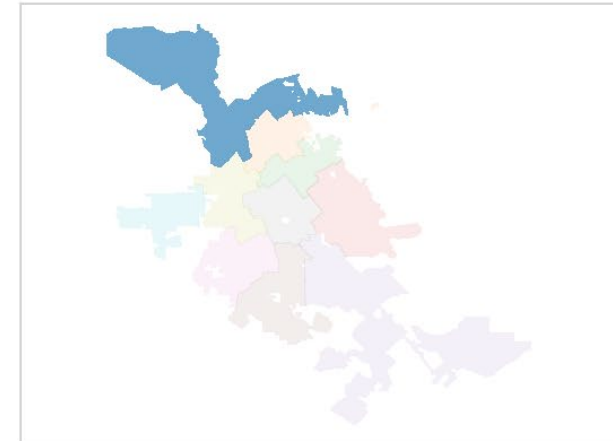
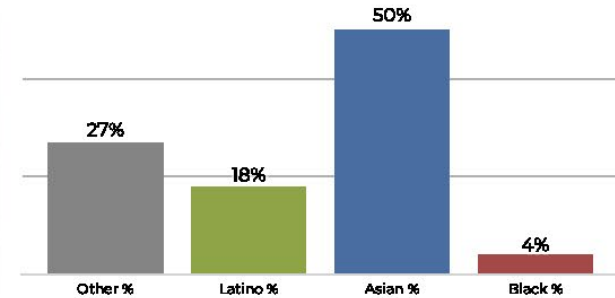
District A



2020 Census

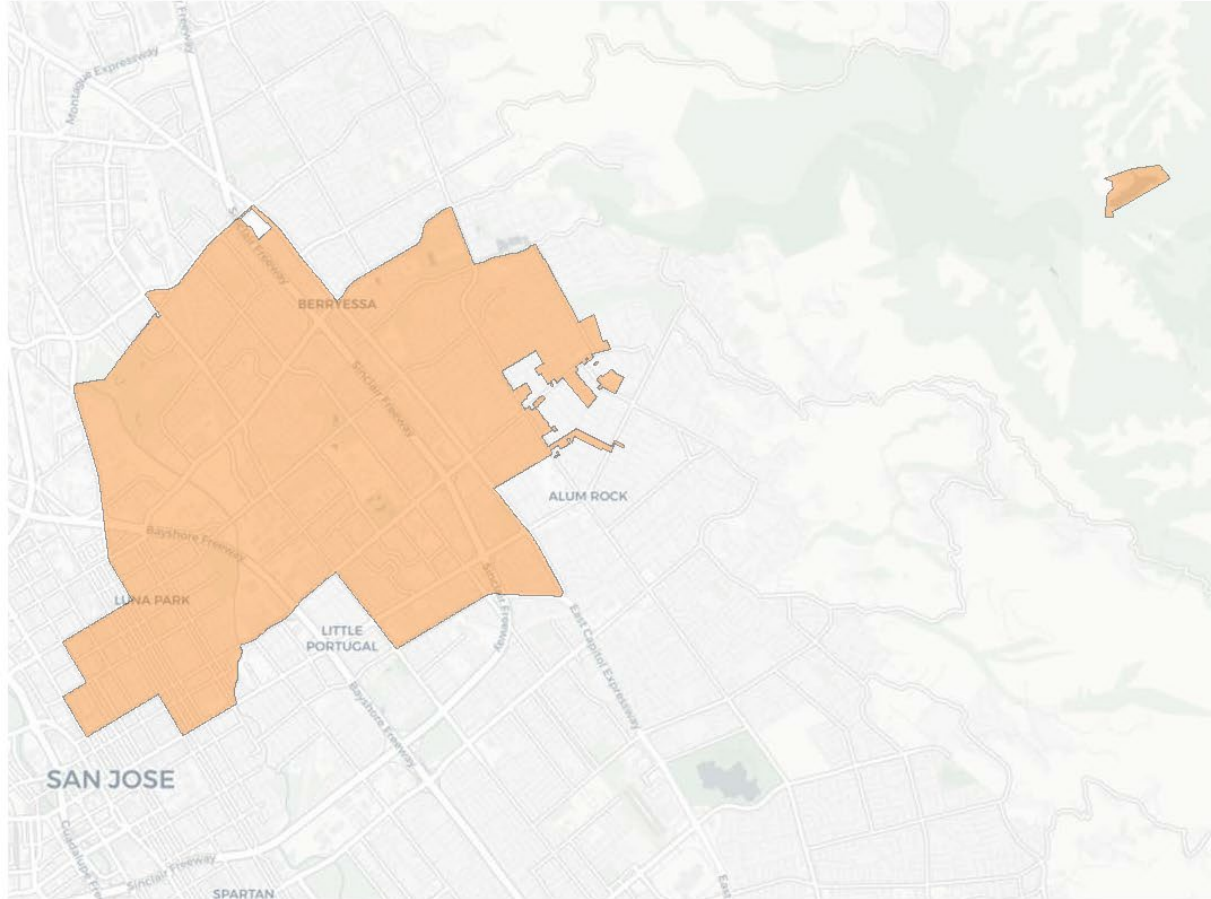


Citizen Voting Age Population

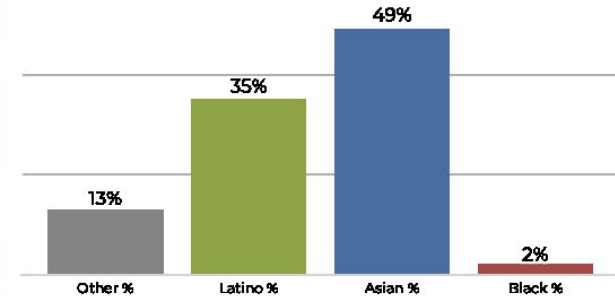


Population	Deviation	Deviation %	Other	Other %	Latino	Latino %	Asian	Asian %	Black	Black %
95,390	-6,178	-6.1%	19,270	20.2%	16,903	17.7%	56,861	59.6%	2,356	2.5%
Total CVAP	Other CVAP	Other CVAP %	Latino CVAP	Latino CVAP %	Asian CVAP	Asian CVAP %	Black CVAP	Black CVAP %		
50,515	13,980	27.7%	9,164	18.1%	25,370	50.2%	2,001	4.0%		

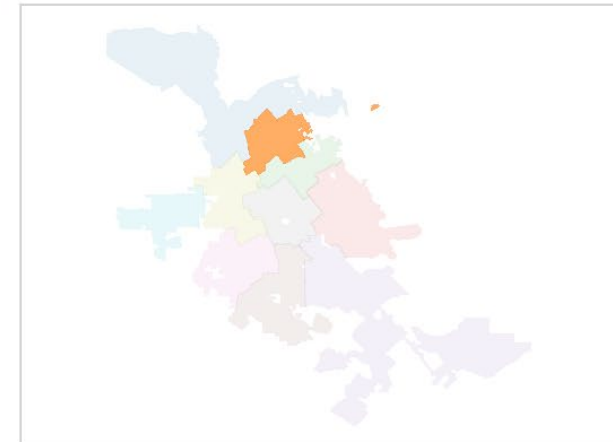
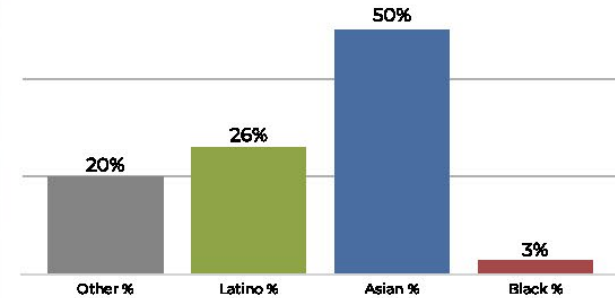
District B



2020 Census

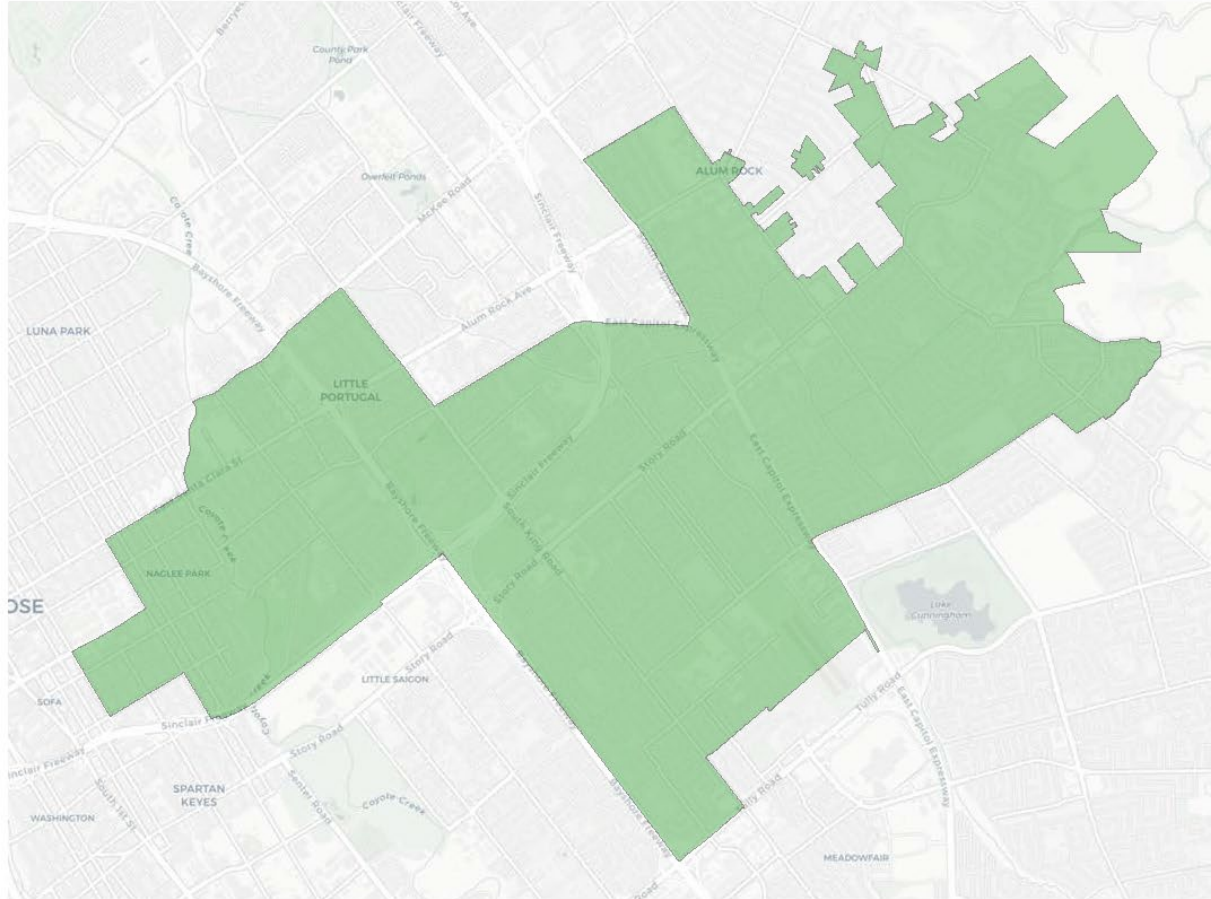


Citizen Voting Age Population

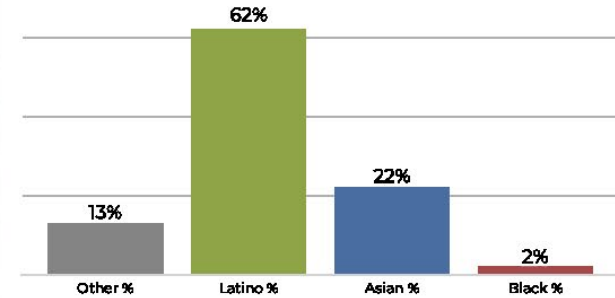


Population	Deviation	Deviation %	Other	Other %	Latino	Latino %	Asian	Asian %	Black	Black %
103,232	1,664	1.6%	13,988	13.6%	36,119	35.0%	50,859	49.3%	2,266	2.2%
Total CVAP	Other CVAP	Other CVAP %	Latino CVAP	Latino CVAP %	Asian CVAP	Asian CVAP %	Black CVAP	Black CVAP %		
62,342	12,488	20.0%	16,692	26.8%	31,194	50.0%	1,968	3.2%		

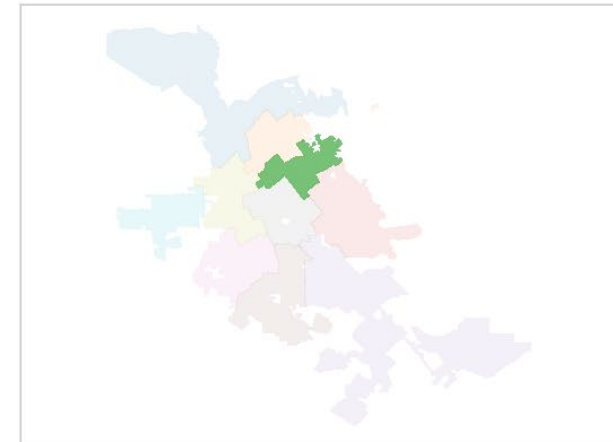
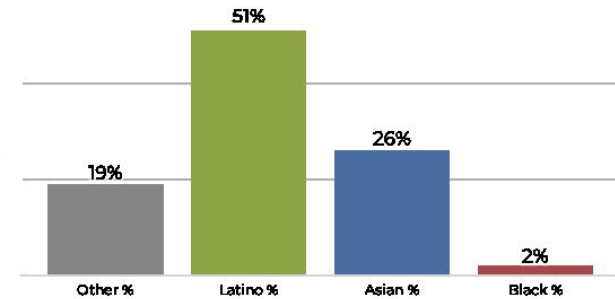
District C



2020 Census

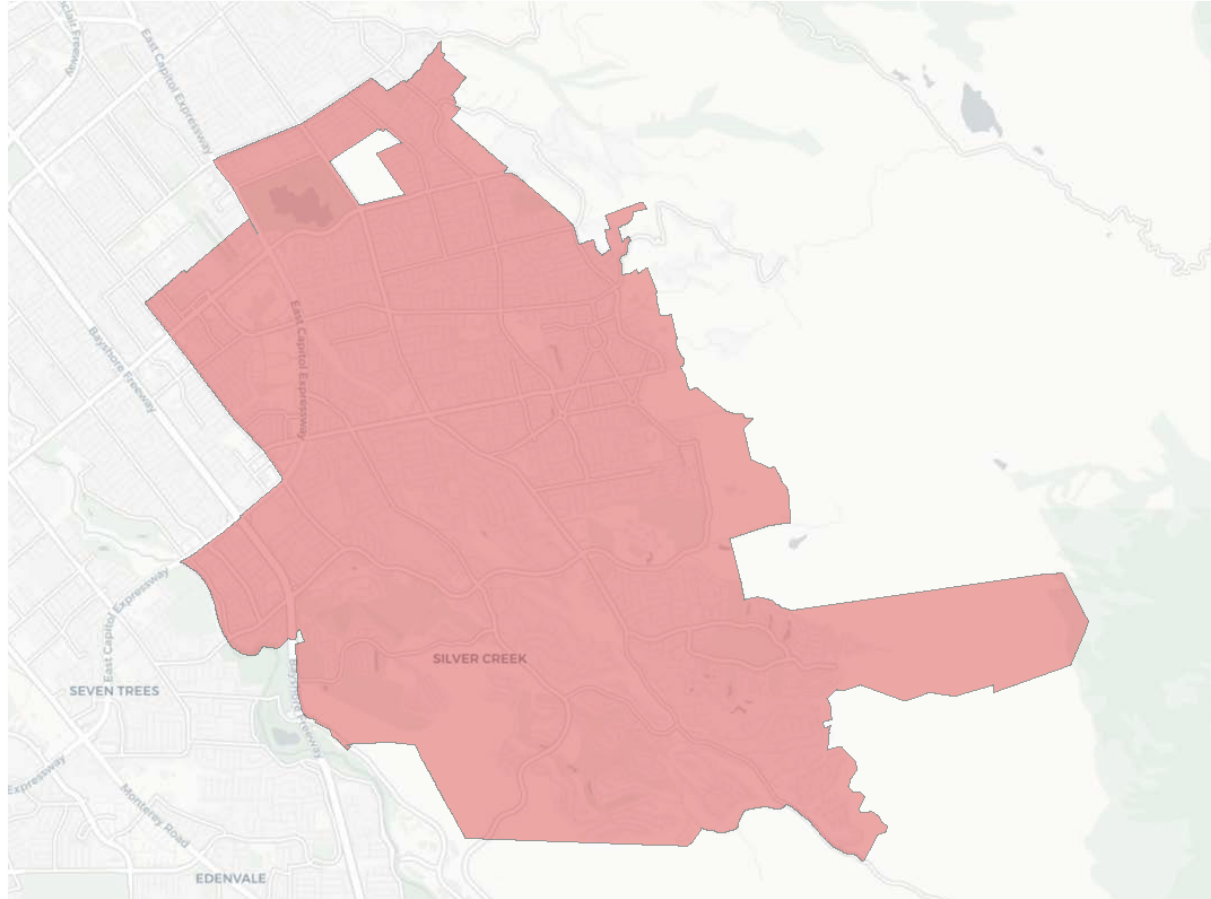


Citizen Voting Age Population

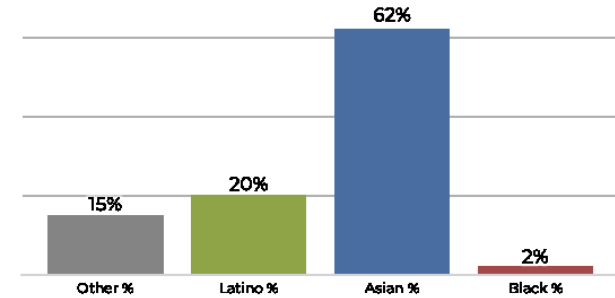


Population	Deviation	Deviation %	Other	Other %	Latino	Latino %	Asian	Asian %	Black	Black %
101,587	19	0.0%	13,339	13.1%	63,023	62.0%	22,972	22.6%	2,253	2.2%
Total CVAP	Other CVAP	Other CVAP %	Latino CVAP	Latino CVAP %	Asian CVAP	Asian CVAP %	Black CVAP	Black CVAP %		
60,166	11,597	19.3%	31,038	51.6%	15,860	26.4%	1,672	2.8%		

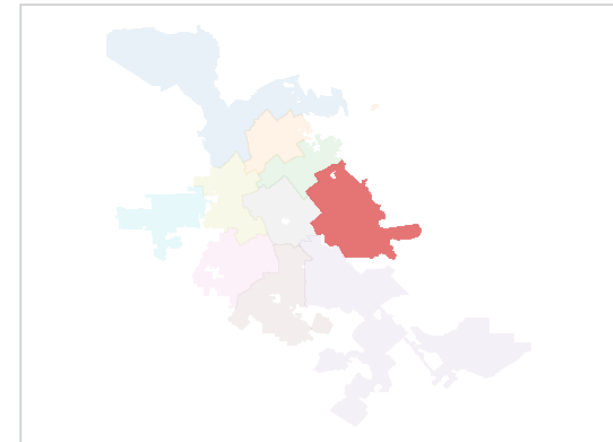
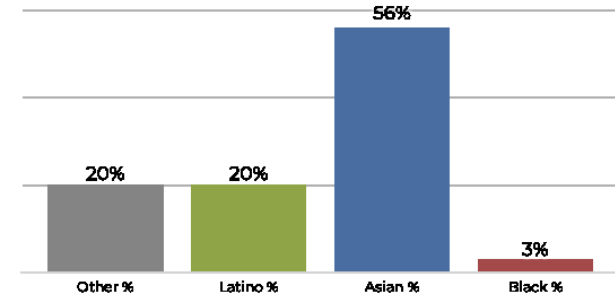
District D



2020 Census

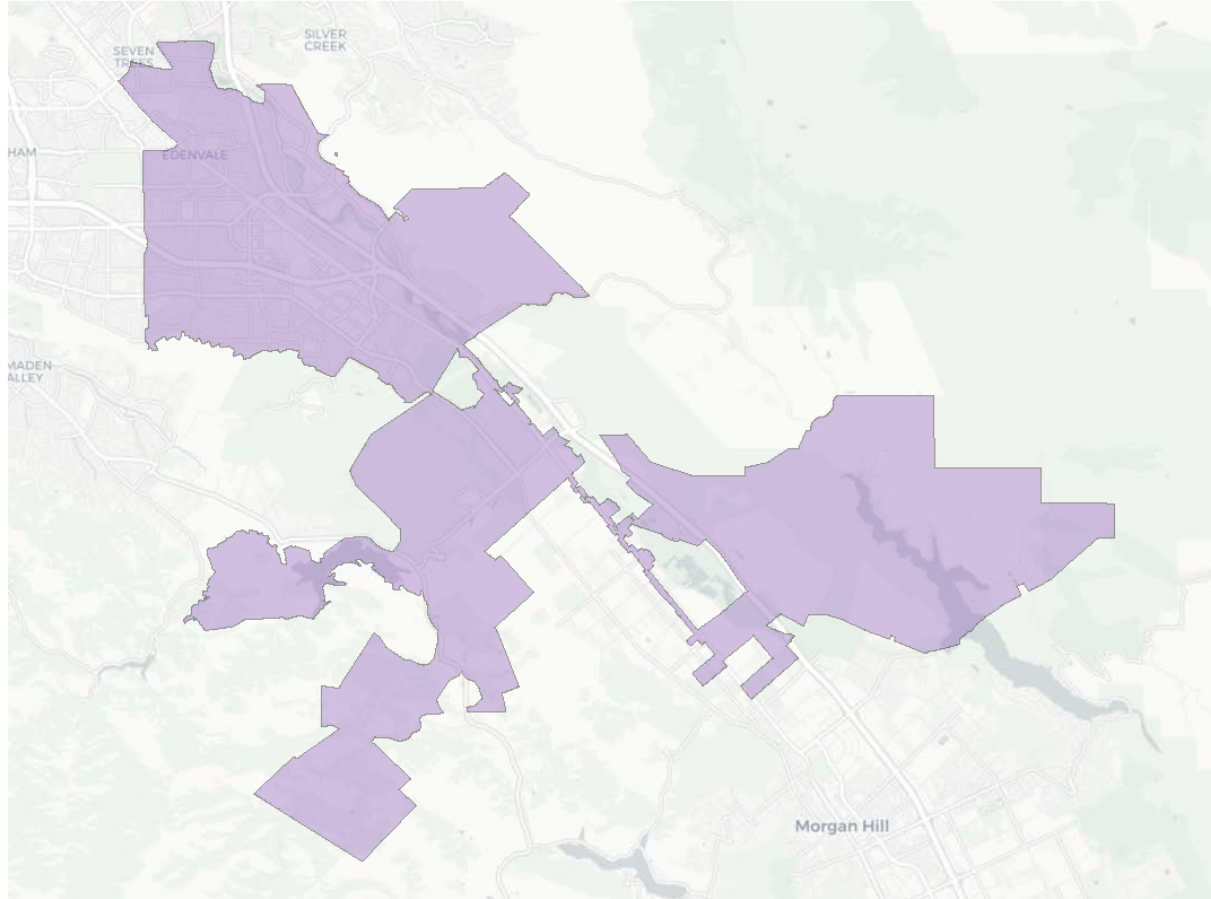


Citizen Voting Age Population

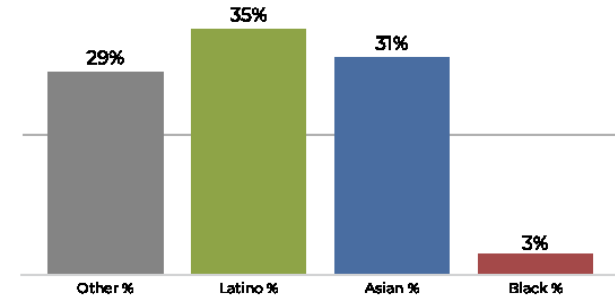


Population	Deviation	Deviation %	Other	Other %	Latino	Latino %	Asian	Asian %	Black	Black %
102,679	1,111	1.1%	15,388	15.0%	21,008	20.5%	64,175	62.5%	2,108	2.1%
Total CVAP	Other CVAP	Other CVAP %	Latino CVAP	Latino CVAP %	Asian CVAP	Asian CVAP %	Black CVAP	Black CVAP %		
71,657	14,437	20.1%	14,810	20.7%	40,200	56.1%	2,211	3.1%		

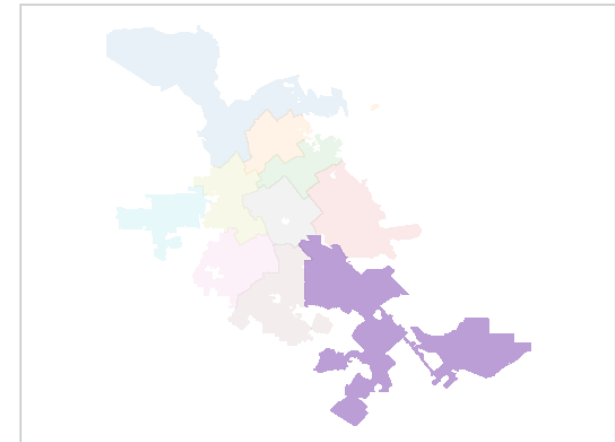
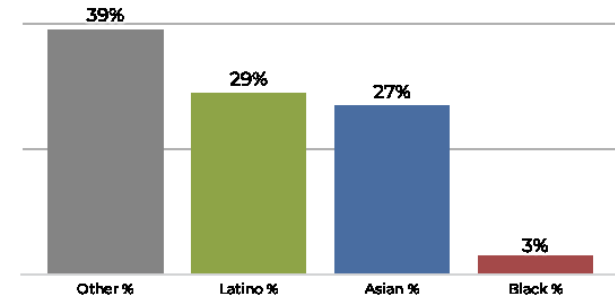
District E



2020 Census

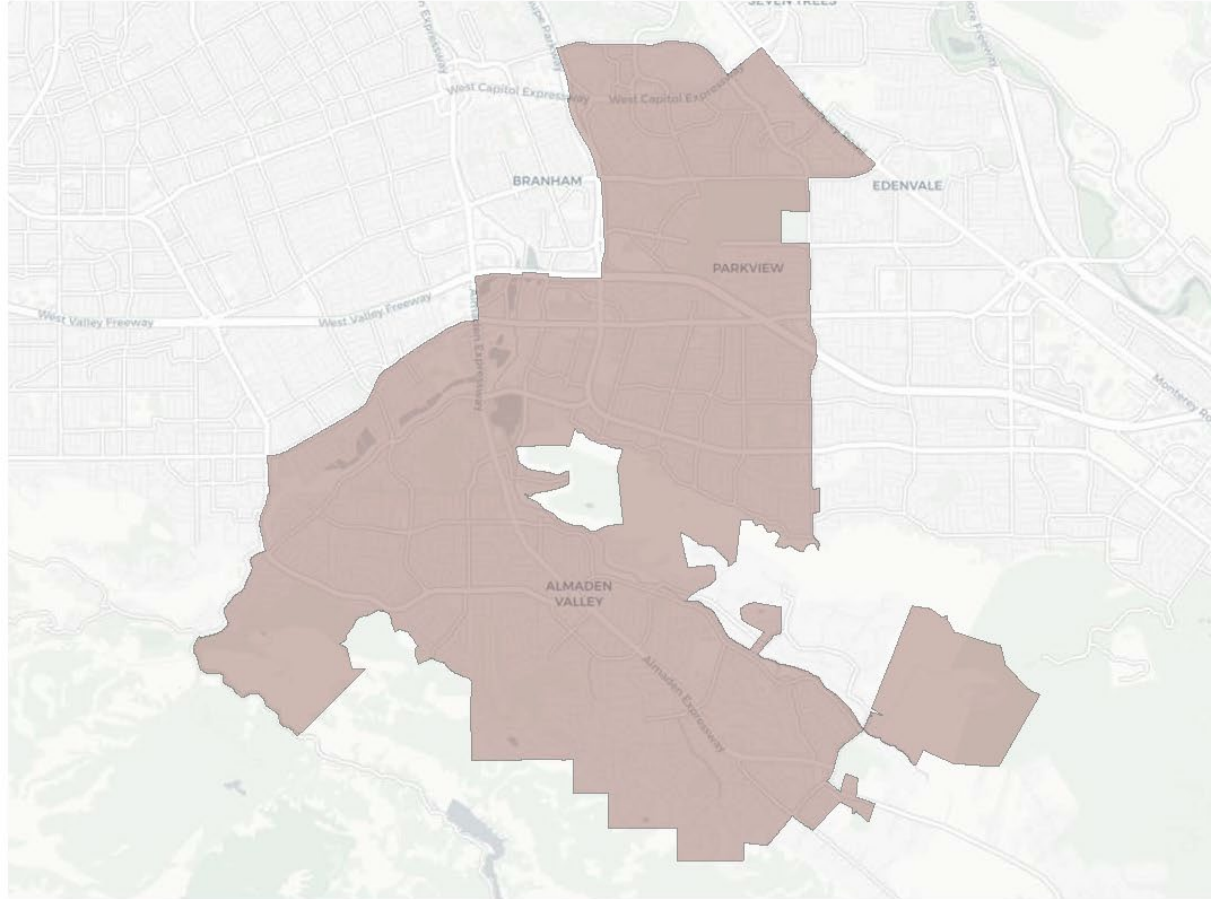


Citizen Voting Age Population

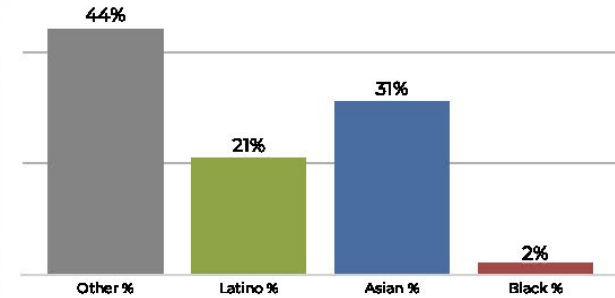


Population	Deviation	Deviation %	Other	Other %	Latino	Latino %	Asian	Asian %	Black	Black %
103,731	2,163	2.1%	30,388	29.3%	37,252	35.9%	32,612	31.4%	3,479	3.4%
Total CVAP	Other CVAP	Other CVAP %	Latino CVAP	Latino CVAP %	Asian CVAP	Asian CVAP %	Black CVAP	Black CVAP %		
65,125	25,901	39.8%	19,105	29.3%	17,895	27.5%	2,225	3.4%		

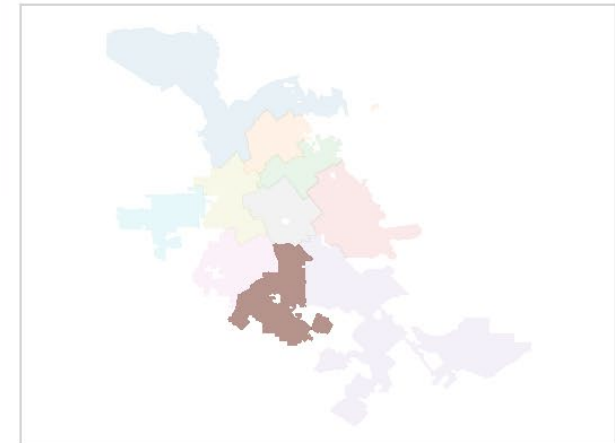
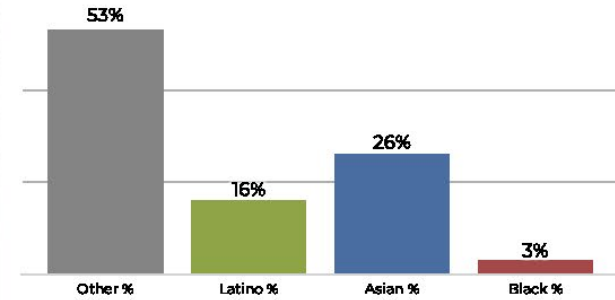
District F



2020 Census

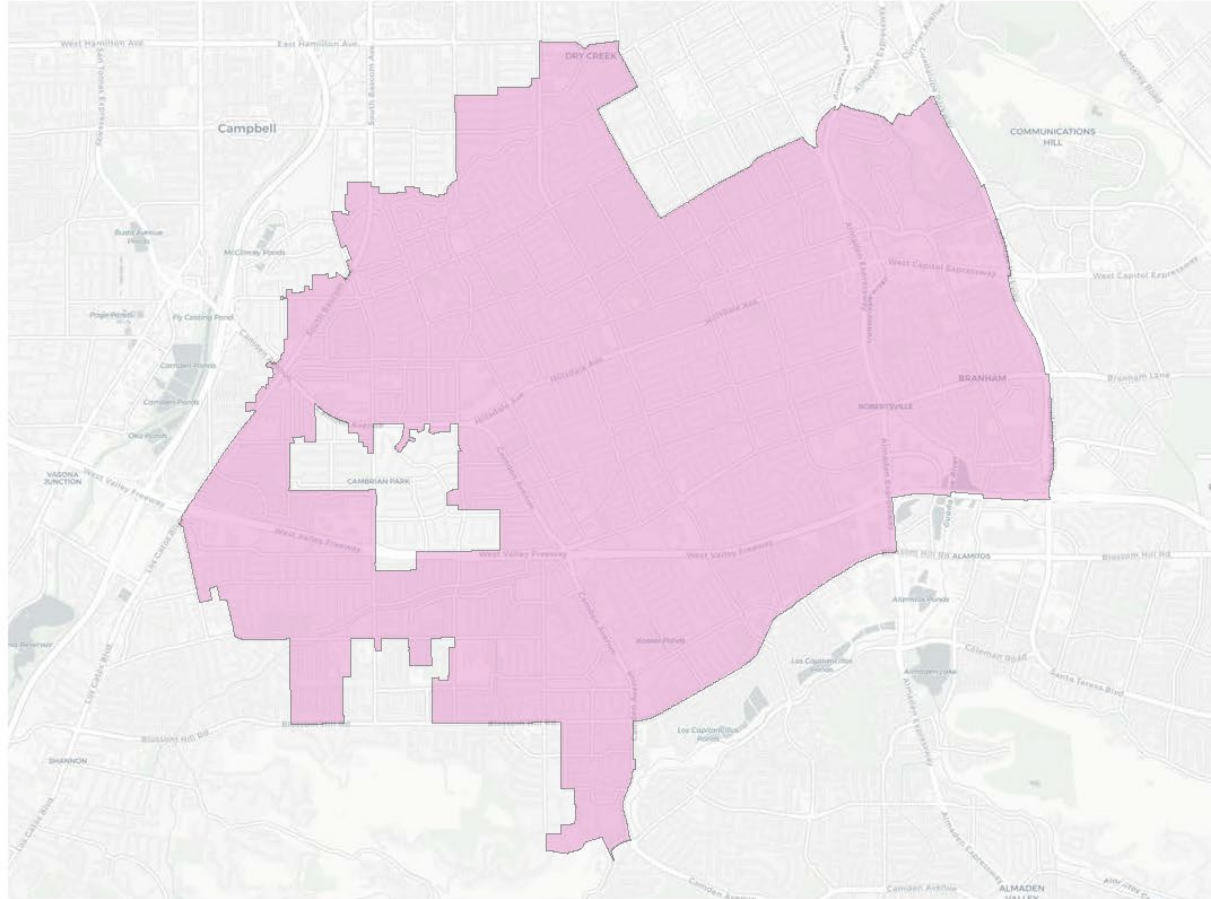


Citizen Voting Age Population

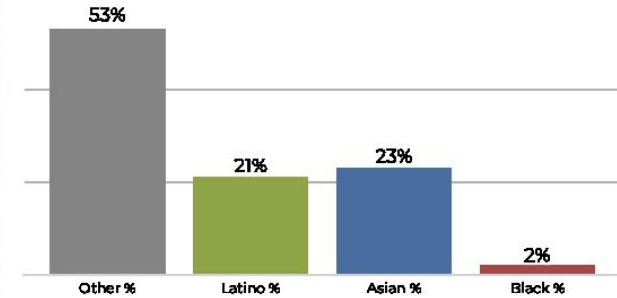


Population	Deviation	Deviation %	Other	Other %	Latino	Latino %	Asian	Asian %	Black	Black %
96,848	-4,720	-4.6%	42,734	44.1%	20,795	21.5%	30,854	31.9%	2,465	2.5%
Total CVAP	Other CVAP	Other CVAP %	Latino CVAP	Latino CVAP %	Asian CVAP	Asian CVAP %	Black CVAP	Black CVAP %		
65,066	35,078	53.9%	10,698	16.4%	16,898	26.0%	2,392	3.7%		

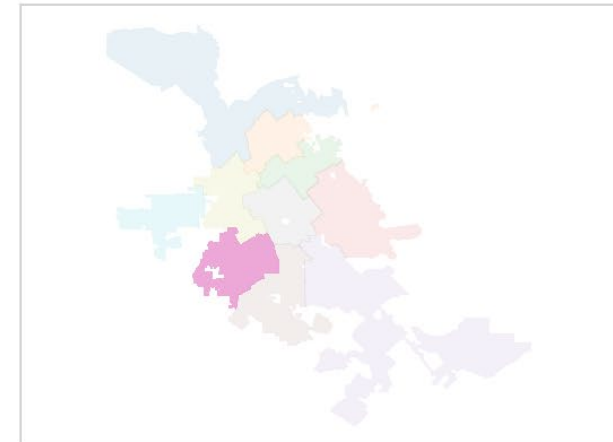
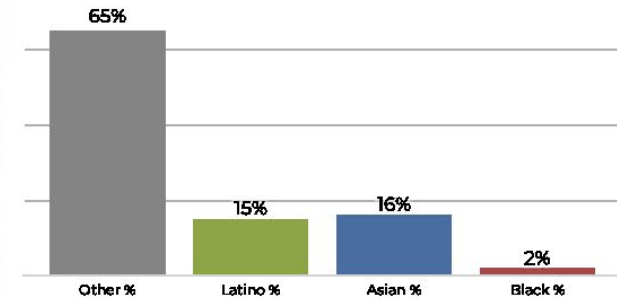
District G



2020 Census

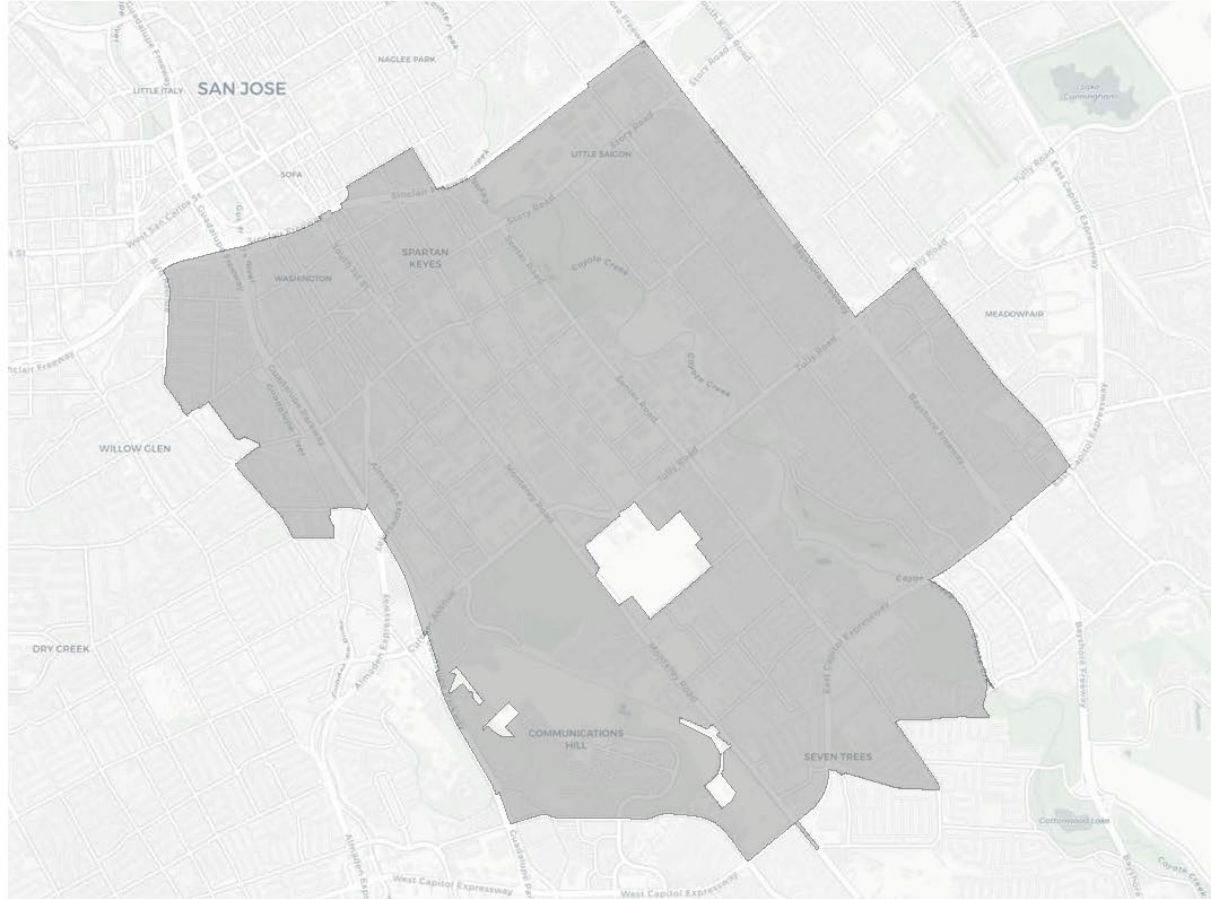


Citizen Voting Age Population

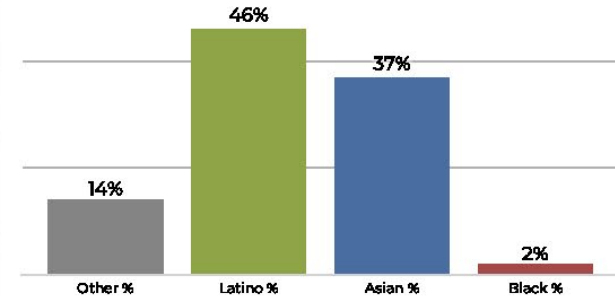


Population	Deviation	Deviation %	Other	Other %	Latino	Latino %	Asian	Asian %	Black	Black %
102,912	1,344	1.3%	54,521	53.0%	21,783	21.2%	24,048	23.4%	2,560	2.5%
Total CVAP	Other CVAP	Other CVAP %	Latino CVAP	Latino CVAP %	Asian CVAP	Asian CVAP %	Black CVAP	Black CVAP %		
68,049	44,510	65.4%	10,578	15.5%	11,086	16.3%	1,875	2.8%		

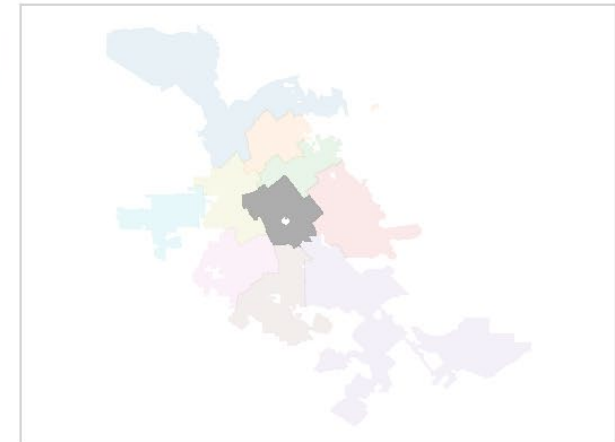
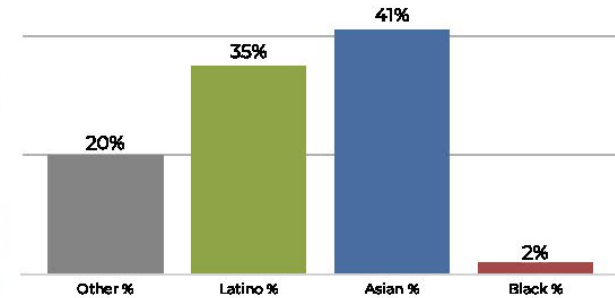
District H



2020 Census

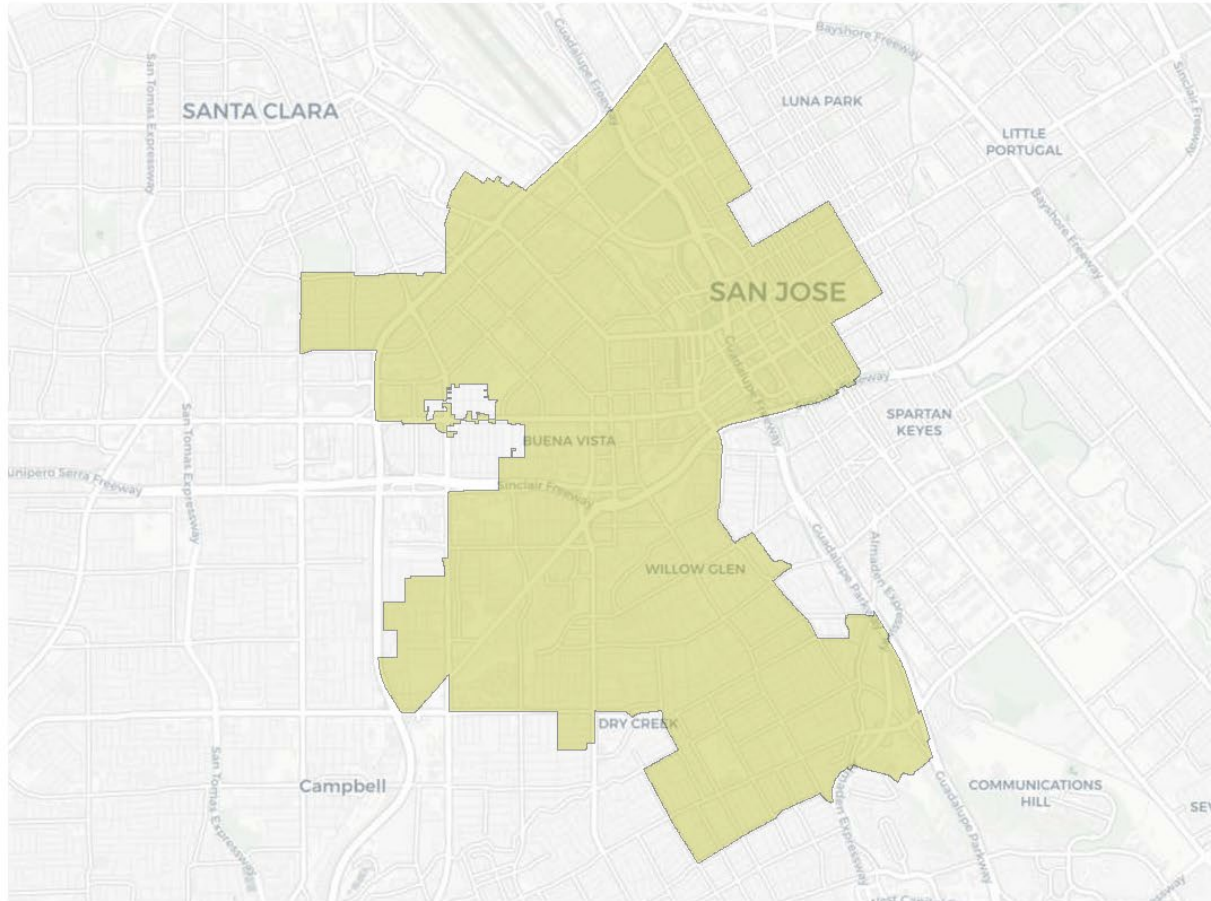


Citizen Voting Age Population

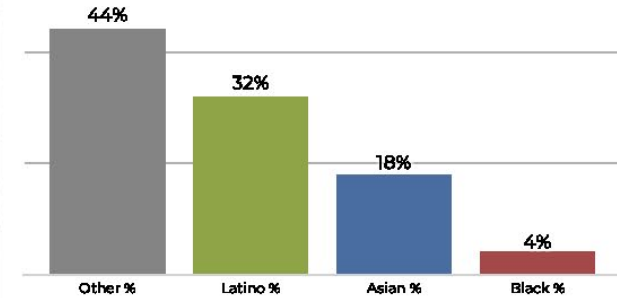


Population	Deviation	Deviation %	Other	Other %	Latino	Latino %	Asian	Asian %	Black	Black %
102,725	1,157	1.1%	14,364	14.0%	47,279	46.0%	38,417	37.4%	2,665	2.6%
Total CVAP	Other CVAP	Other CVAP %	Latino CVAP	Latino CVAP %	Asian CVAP	Asian CVAP %	Black CVAP	Black CVAP %		
59,214	12,104	20.4%	21,206	35.8%	24,478	41.3%	1,427	2.4%		

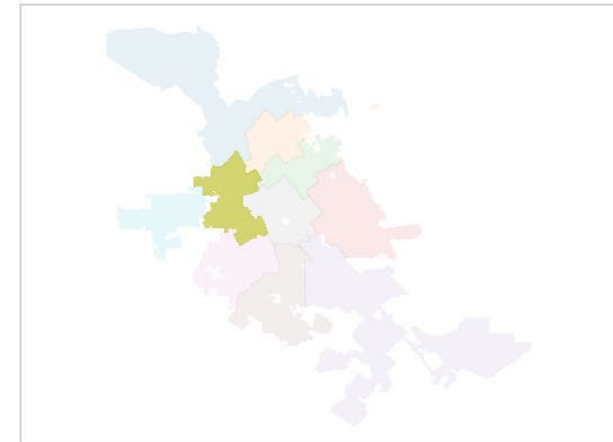
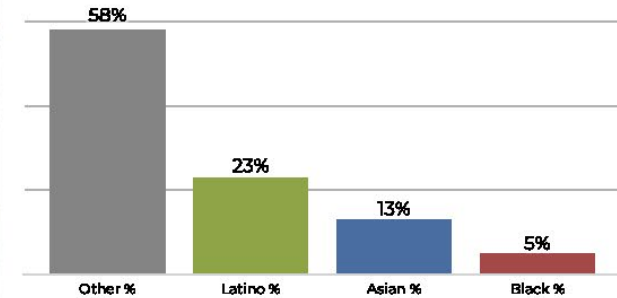
District I



2020 Census

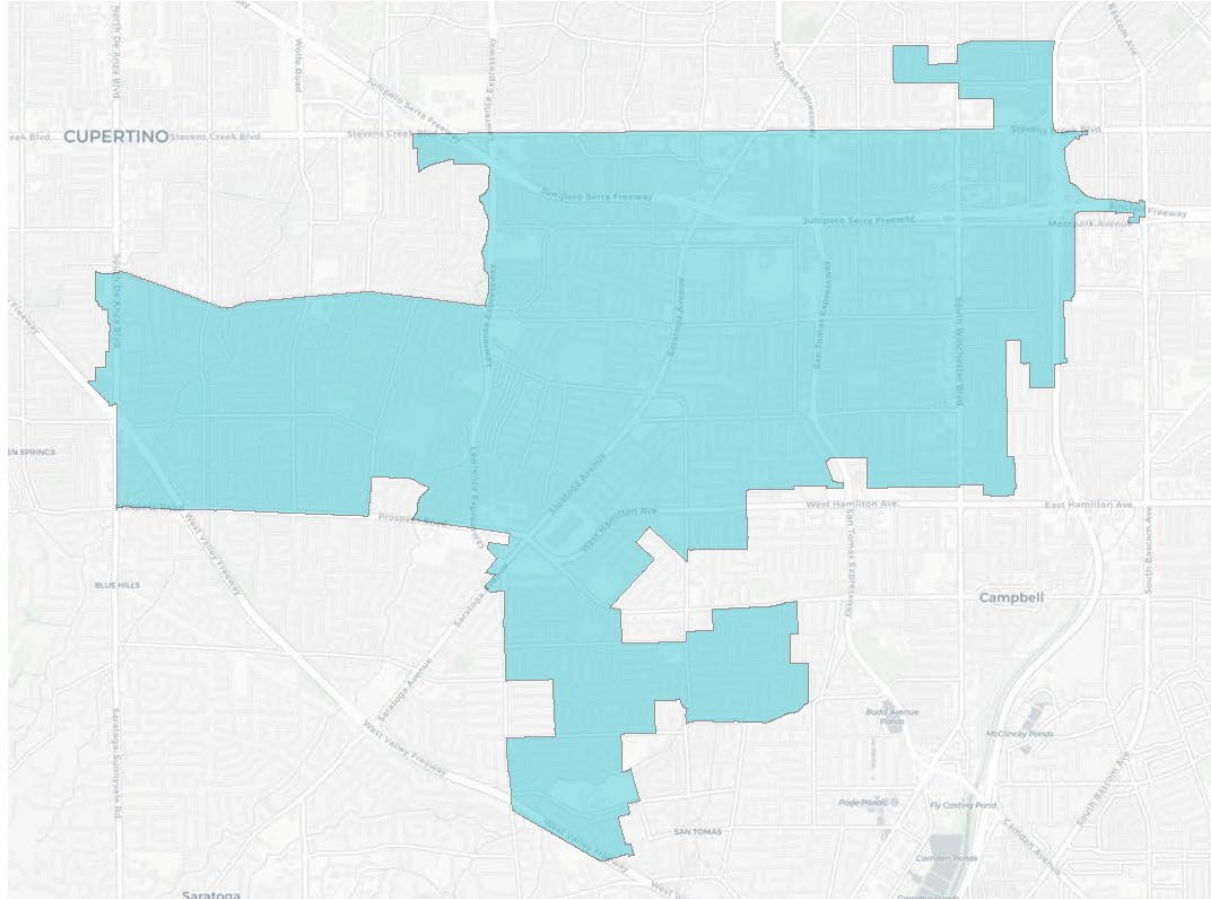


Citizen Voting Age Population

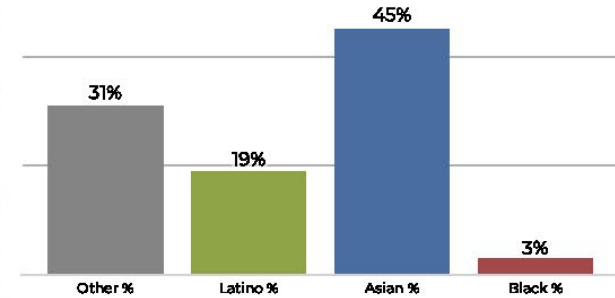


Population	Deviation	Deviation %	Other	Other %	Latino	Latino %	Asian	Asian %	Black	Black %
102,954	1,386	1.4%	46,271	44.9%	33,370	32.4%	18,775	18.2%	4,538	4.4%
Total CVAP	Other CVAP	Other CVAP %	Latino CVAP	Latino CVAP %	Asian CVAP	Asian CVAP %	Black CVAP	Black CVAP %		
67,414	39,101	58.0%	15,834	23.5%	9,096	13.5%	3,383	5.0%		

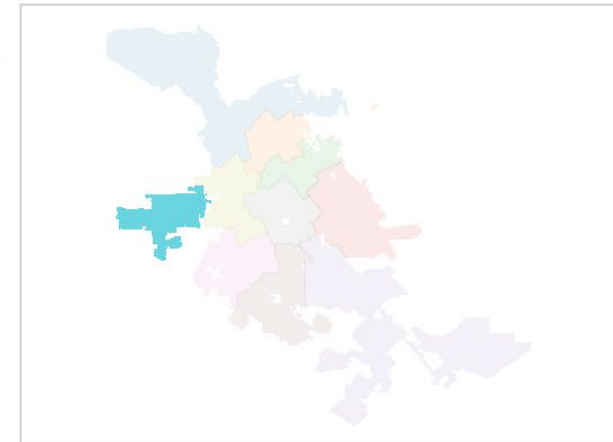
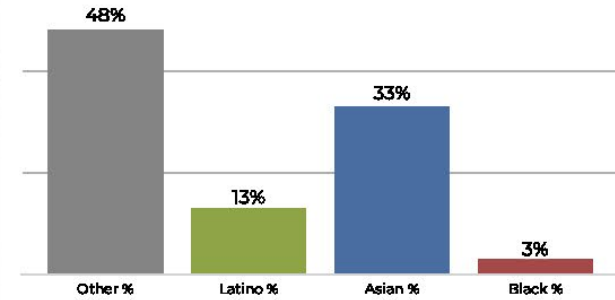
District J



2020 Census



Citizen Voting Age Population



Population	Deviation	Deviation %	Other	Other %	Latino	Latino %	Asian	Asian %	Black	Black %
103,625	2,057	2.0%	32,875	31.7%	20,105	19.4%	47,524	45.9%	3,121	3.0%
Total CVAP	Other CVAP	Other CVAP %	Latino CVAP	Latino CVAP %	Asian CVAP	Asian CVAP %	Black CVAP	Black CVAP %		
59,990	29,204	48.7%	8,350	13.9%	20,340	33.9%	2,097	3.5%		

Getting from input to new proposed maps

- Thumbnail of district overview
- Objective Measures
- Notes



From COI to Draft Maps

Getting from input to new proposed maps

All maps approved as “Draft” maps will be placed on redistricting website for public feedback.

- Written input
- Public comment and next hearing
- Potential map changes in DistrictR tool



From COI to Draft Maps

Getting from input to new proposed maps

Future hearings will allow for changes to the Drafts prior to adoption

- Hearing on draft maps
- Selection on final proposed draft with any changes





REDISTRICTING PARTNERS