



Street Sweeping Overview

John Ristow
Director of Transportation

Rick Scott
Deputy Director, DOT

Eric Hon
Division Manager, DOT

Jennifer Seguin
Division Manager, DOT

Purpose of Street Sweeping

- National Pollutant Discharge Elimination System (NPDES) established by 1972 Clean Water Act
- Street sweeping is included as a best practice requirement in the stormwater discharge permit issued to San José
- Prevents pollutants from entering storm drains and waterways
 - Sediment
 - Nutrients (fertilizers and animal waste)
 - Toxic metals
 - Organic material



Program Overview

Annual Curb Miles Swept by Program

Contractor (RSS)

Frequency

- Once per month
- 20 enhanced sweeps/year
- Spot cleaning as needed

Parking restrictions

- 24% of routes (367 miles)

36,000
(54%)

City Crews

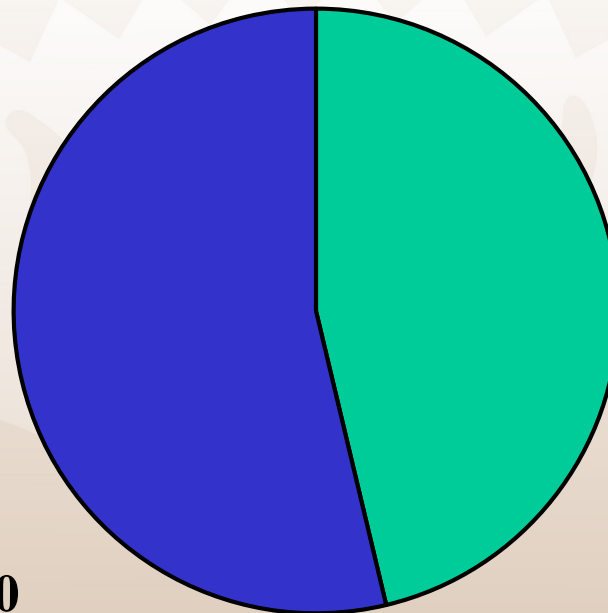
Frequency:

- Downtown - nightly
- Business Dist. – 2x/week
- Arterials/Bikeways – 2x/month

Parking Restrictions

- 50% of routes (179 miles)

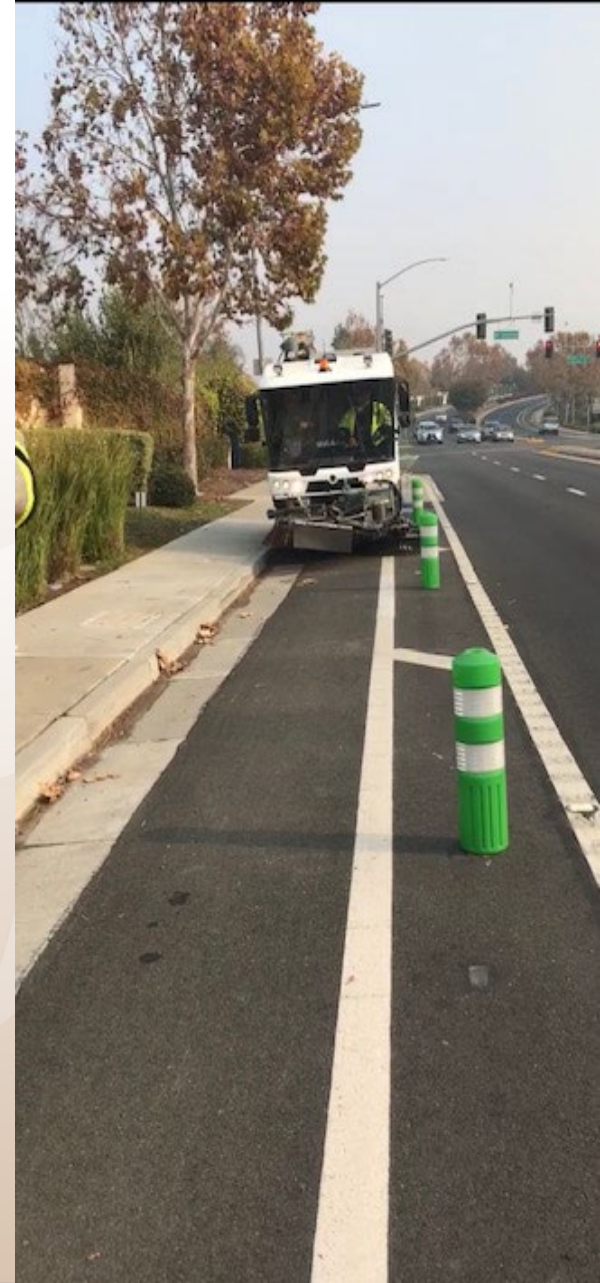
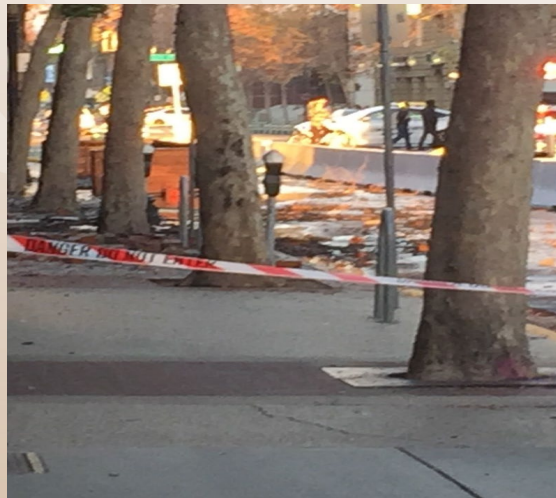
31,000
(46%)



■ In-house ■ Contractual

City Crews

- Sweeper Operators employed by DOT
- City owns sweepers for streets and bike lanes
- Routine sweeping and DOT sweepers respond to calls when needed
 - Debris in the street
 - Police & Fire emergency cleanup



Residential Street Sweeping (RSS)



- Sweepers Operators employed by GreenWaste, contractor owns sweepers
- DOT inspection staff assess effectiveness of contractual sweeping, respond to complaints and other sweeping obstruction issues
- Inspection staff coordinate enhanced sweeps and debris removal
- Track parking prohibition signage requests and verify parking impacts



Sweeping Barriers & Challenges



- Leaves and landscape debris piles
- Parked cars
- Low-hanging tree branches (14' clearance needed)
- Waste Containers



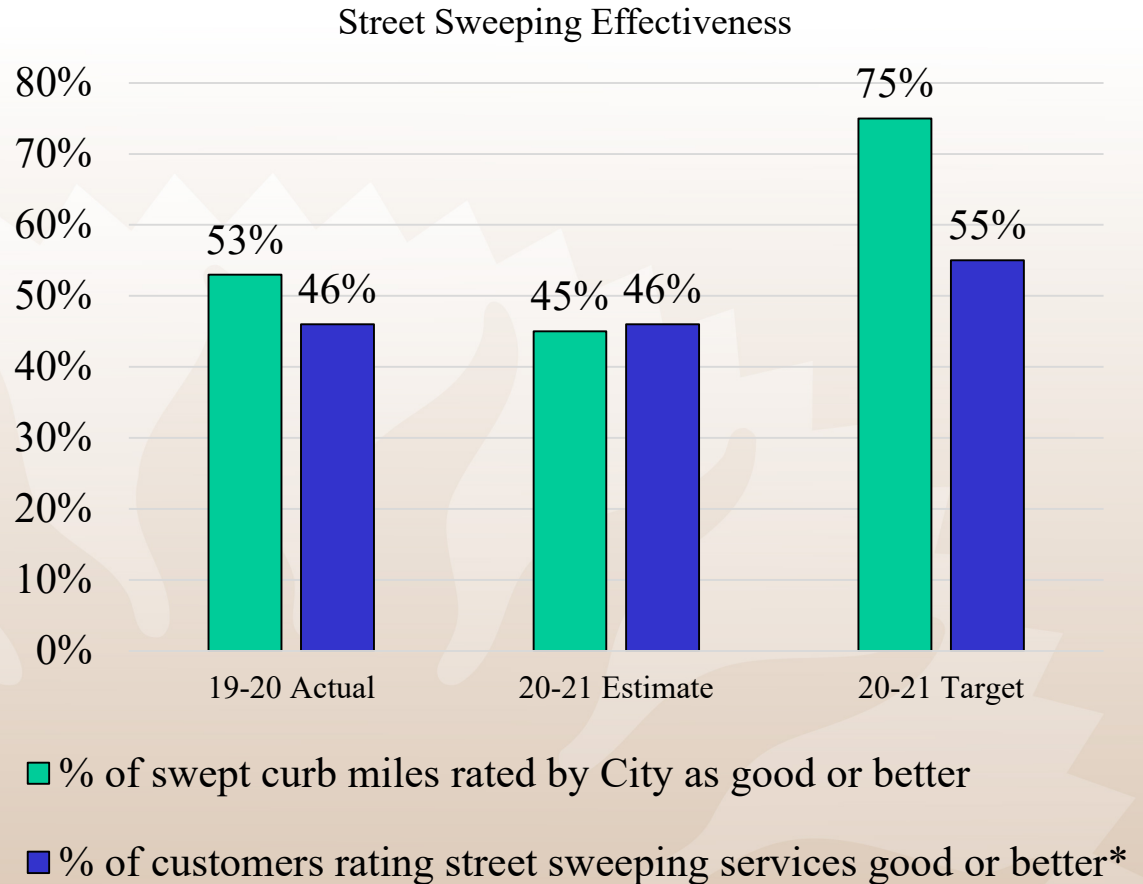
Sweeping During Pandemic

- Parking compliance suspended during pandemic
- Staff redeployments and required leave impacted route completion
- Inspection services with limited remediation tools to compel compliance
 - RSS staff identified barriers, but due to pandemic, did not enforce.
 - Staff mitigated minor sweeping impacts, such as collecting debris piles
 - Performed one time cleanup as needed in areas with large debris build up



Core Service Measurement

- Two effectiveness measures
 - City
 - Customers*
- Based on 5-point scale
- Good or better rating based upon effectiveness and satisfaction with street appearance (4 or greater on a 1-5 scale)



* The Environmental Services Department conducts a resident survey once every two years (Recycle Plus Survey). The next Survey is scheduled in winter 2022.

Route Completion Tracking

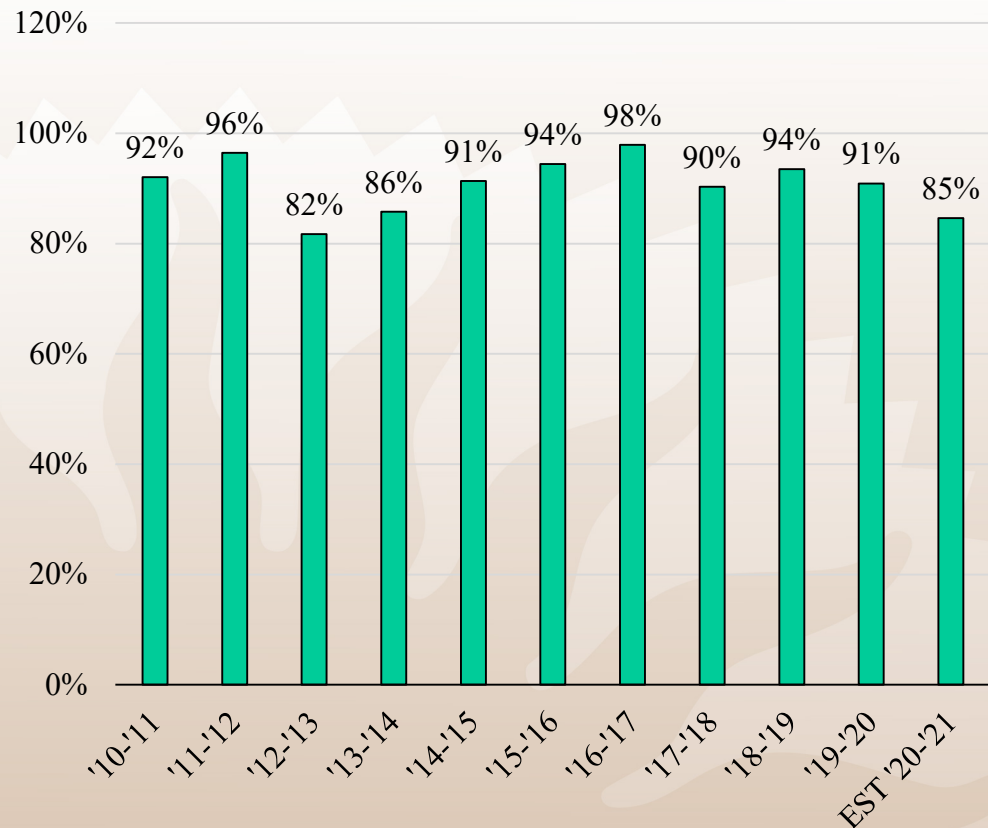
City Crews

- Route completion tracked daily via telematics
- Missed areas completed on Fridays

Contractor (RSS)

- Spot check with inspector
- Contractually obligated to complete every route

Route Completion Over Time



Street Sweeping Audit: 2016

key: ■ implemented ■ partly implemented ■ not implemented

Report	Audit Title	Dept(s)	We made recommendations to:	Current Recommendation Status
#16-02	Street Sweeping: Significant Investment and Re-Tooling Are Needed to Achieve Cleaner Streets	DOT	Improve the effectiveness of sweeping City streets through evaluating program costs, enhancing tools for data monitoring, and improving communication with the public	<div style="display: flex; align-items: center;"> <div style="width: 100%; height: 10px; background: linear-gradient(to right, green 70%, lightgreen 70% 80%, lightgreen 80% 100%);"></div> 14 </div>

1. DOT's street sweeping operation should stop emptying street sweepings onto street.
 - **In Progress**, new staff member hired and equipment in procurement pipeline.
2. DOT and ESD should deploy electronic inspection system and GPS-tracking devices.
 - **Completed** for City Crews
 - **In Progress** for RSS - City and GW working to quantify costs for potential contractual add
3. Based on staff input, route data, and equipment needs, DOT should:
 - a) Review and revise street sweeping schedules and routes – **Completed** *to the extent current funding allows;*
 - b) Consider additional enhanced sweeps in particularly dirty areas as funds and resources become available: **Completed**, *enhanced sweep increased from 9 to 20 per year in contract update*
 - c) Develop a plan to periodically review street sweeping schedules and routes that consider street conditions: **Completed**, *routes evaluated in coordination meetings*

Sweeping Lookup Tool

Residents and businesses can look up their sweep day at:
www.sjenvironment.org/lookup (ESD website)

Utility Services Lookup

streetservices.visualizedot.com

200 E Santa Clara St, San Jose, California

Details for this Address

Holiday Calendar

Residential Waste Pickup

Pick up Day:
Garbage
Hauler: [GreenTeam \(MFD\)](#)
Phone: (408) 282-4400
Recycling & Junk Pickup
Hauler: [GreenTeam \(MFD\)](#)
Phone: (408) 282-4400
Yard Trimmings
Hauler: [GreenTeam \(MFD\)](#)
Phone: (408) 283-4800

Details
Schedule a free Junk Pickup by contacting your recycling hauler listed above by phone or clicking the link and completing the contact form.

Street Sweeping

Nearest Street: **E Santa Clara St**
Sweep Day: **Mondays and Thursdays**
Sweep Time: **3am - 6am**
Parking Restrictions: **North Side: No Parking 3am-6am Any Day, South Side: No Parking Monday And Thursday 3am-**



Street Sweeping Overview

John Ristow
Director of Transportation

Rick Scott
Deputy Director, DOT

Eric Hon
Division Manager, DOT

Jennifer Seguin
Division Manager, DOT