

Municipal Regional Stormwater NPDES Permit Status Update

Presented by Jeff Sinclair, Senior Environmental Program
Manager and Rajani Nair, Deputy Director
Watershed Protection Division, Environmental Services

Transportation and Environment Committee
June 7, 2021
Item d.1



Delivering world class utility services and programs
to improve our health, environment, and economy.

Environmental Services

Where the Water Goes

**Indoor
Activities**

**Sanitary
Sewer**

Treatment Plant



**Outdoor
Activities**

Storm Sewer

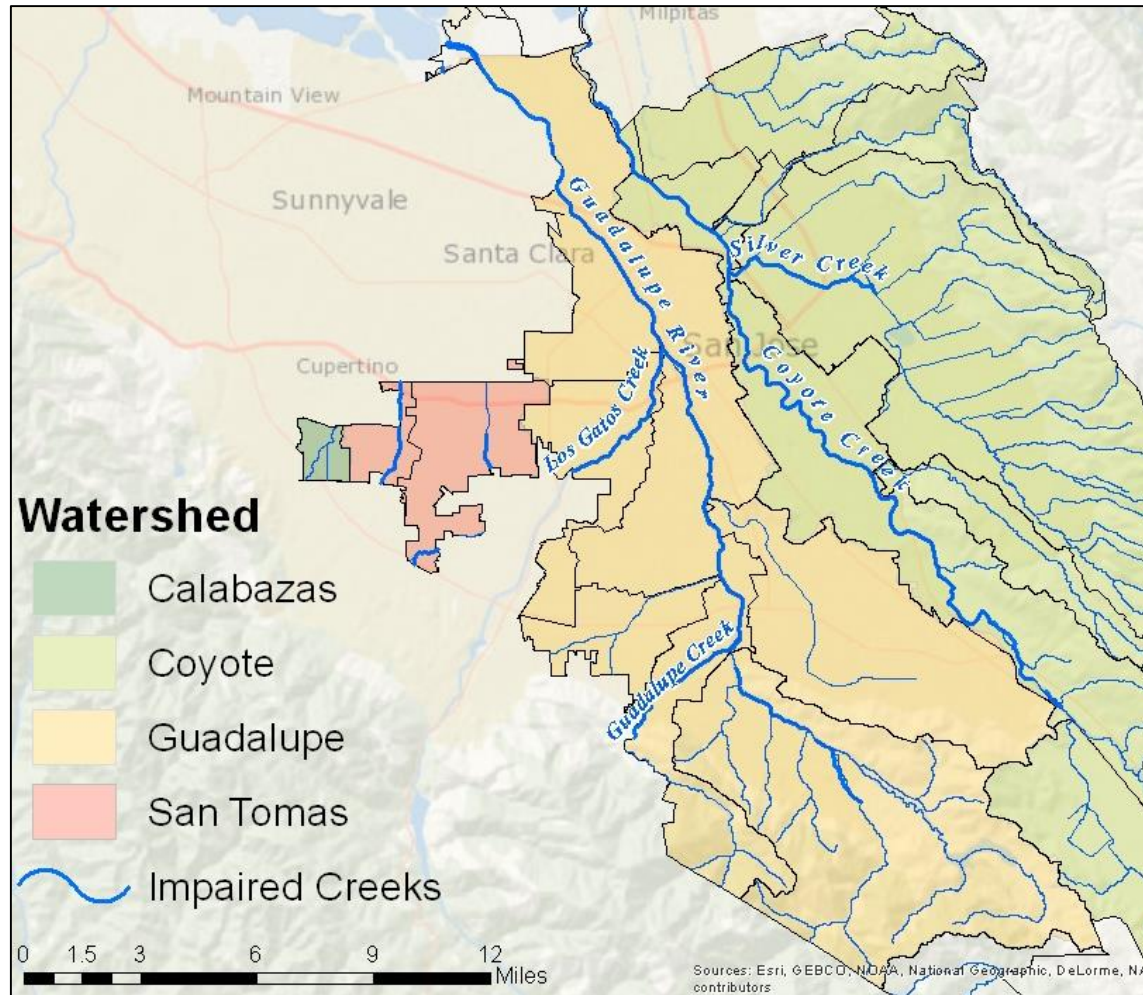
Creeks & Rivers



Delivering world class utility services and programs to improve
our health, environment, and economy.

San Jose Watersheds & Waterways

- 26 distinct creeks and streams
- 136 miles of creeks and streams
- Support native flora and fauna



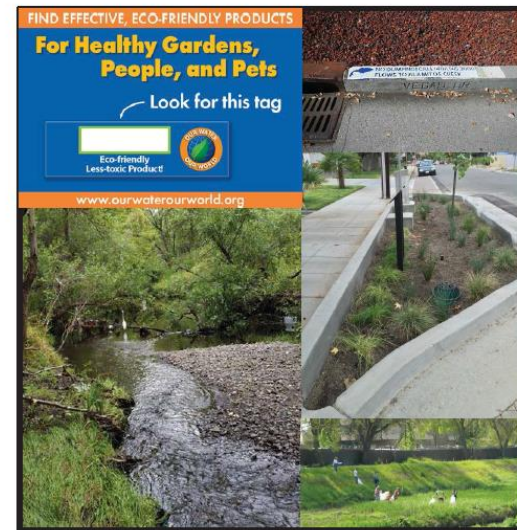
Delivering world class utility services and programs to improve our health, environment, and economy.

Municipal Regional Stormwater Permit

- Federal Clean Water Act requirement
- Five-year permit regulates municipal storm sewer system discharges
- Permit Reissuance

California Regional Water Quality Control Board
San Francisco Bay Region
Municipal Regional Stormwater NPDES Permit

Order No. R2-2015-0049
NPDES Permit No. CAS612008
November 19, 2015





C.3 New & Redevelopment

Project Type	Current Permit	Proposed Changes
Commercial, Municipal, Multi-Family Dwellings	10,000 sq. ft. – treatment required	5,000 sq. ft. – treatment required. *Includes Public Right of way
Single Family Homes	Exempt	10,000 sq. ft. – treatment required
Roadway Projects	Maintenance Exempt	1 acre with replacement down to base
Green Stormwater Infrastructure	Develop a GSI Plan	Construct GSI to treat 10 acres



Delivering world class utility services and programs to improve our health, environment, and economy.

C.3 New & Redevelopment

Impacts:



Project Type	Proposed Changes
Commercial, Municipal, Multi-Family Dwellings	5,000 sq. ft. – treatment required. *Includes Public Right-of-way
Single Family Homes	10,000 sq. ft. – treatment required
Roadway Projects	1 acre with replacement down to base
Green Stormwater Infrastructure	Construct GSI to treat 10 acres

- Additional green stormwater infrastructure
- Estimated additional costs:
 - \$27/sq. ft for development
 - Estimated \$79 million for roadway maintenance
- Additional permitting, inspecting, tracking, & reporting

C.10 Trash Load Reduction - Current



- Exceeded 80% required target as of 2018 and currently maintaining

Delivering world class utility services and programs to improve our health, environment, and economy.

C.10 Trash Load Reduction



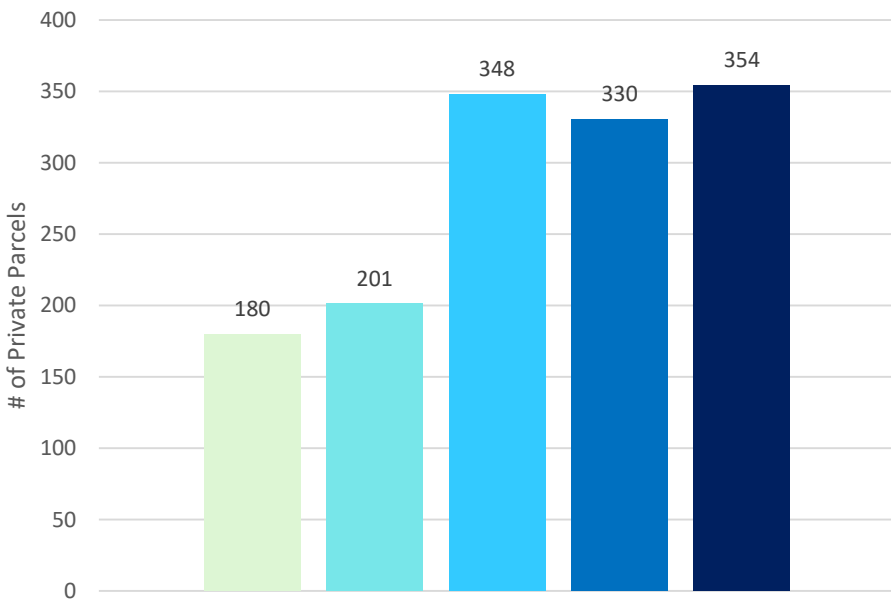
35%
?



Delivering world class utility services and programs to improve our health, environment, and economy.

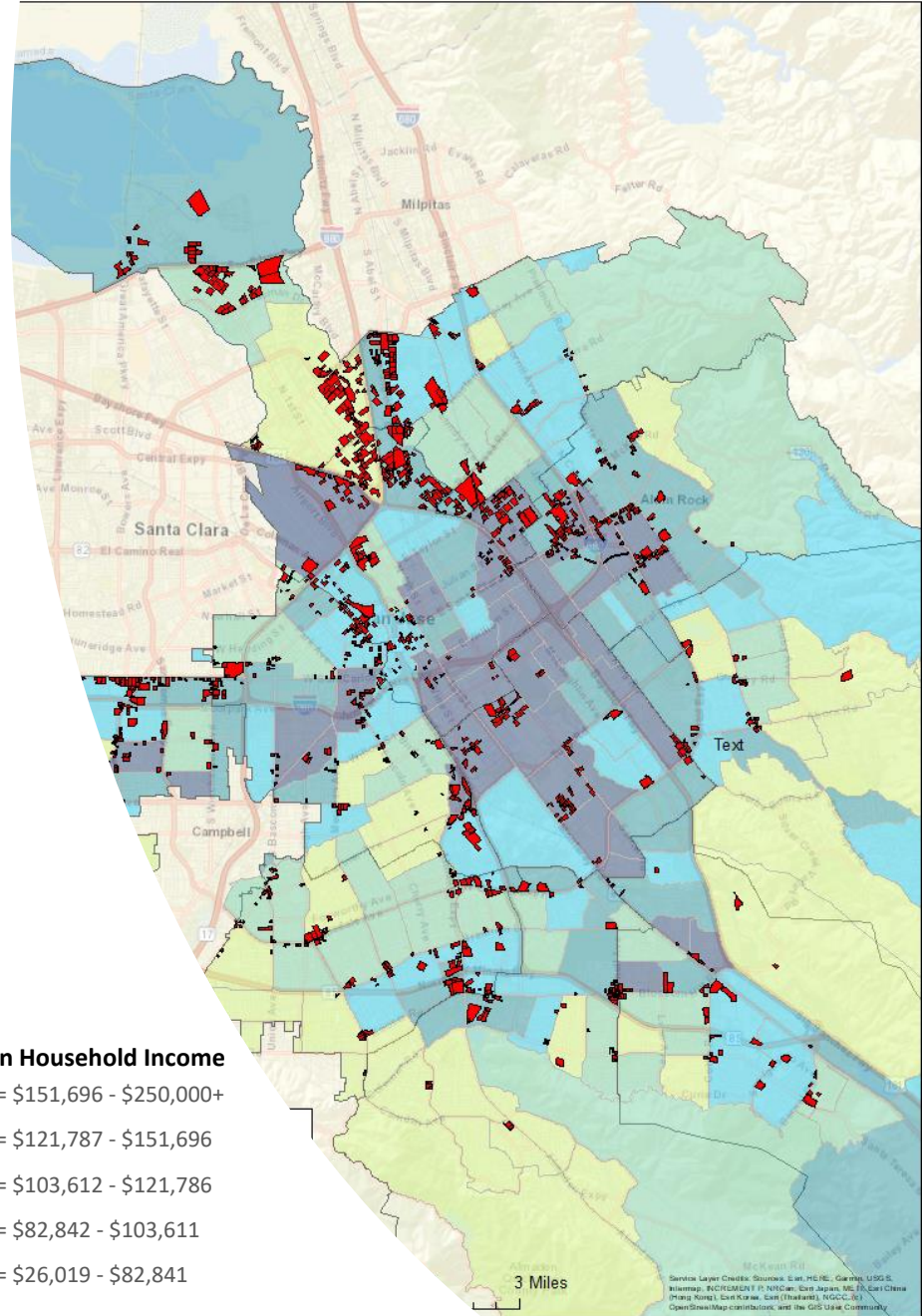
C.10 Trash Load Reduction: Private Land Equity Impact

- 74% below \$121,786 median household income



Median Household Income

- 1 = \$151,696 - \$250,000+
- 2 = \$121,787 - \$151,696
- 3 = \$103,612 - \$121,786
- 4 = \$82,842 - \$103,611
- 5 = \$26,019 - \$82,841



Delivering world class utility services and programs to improve our health, environment, and economy.

C.12 Polychlorinated Biphenyls Controls

- PCBs in stormwater from industrial areas
- Control measures
 - Structural
 - Programmatic
- Source properties vs. potential areas





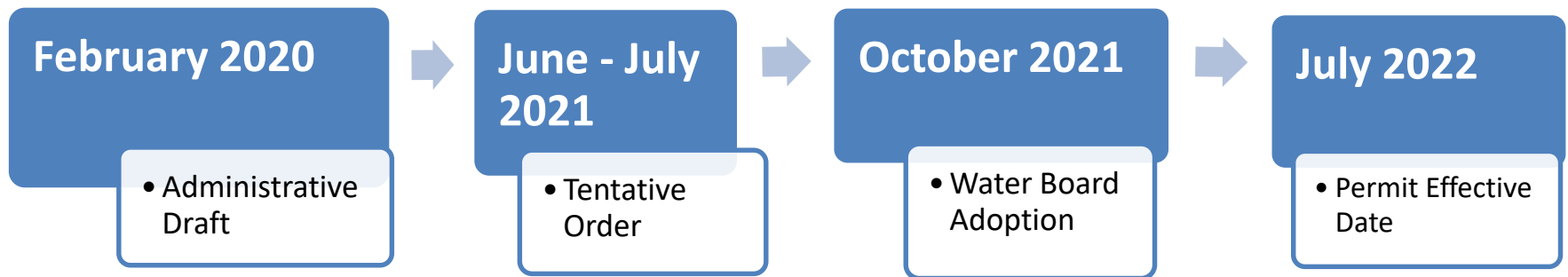
New Requirements: Cost Reporting & Unhoused

- Cost Reporting
 - Level of detail TBD
 - Framework for methodology, expectations, and guidance
- Unhoused (RVs, Encampments, etc.)
 - Track and report homeless data
 - Actions taken to address homelessness
 - Interdepartmental coordination



Next Steps

Tentative Permit Reissuance Schedule:



Municipal Regional Stormwater NPDES Permit Status Update

Presented by Jeff Sinclair, Senior Environmental Program
Manager and Rajani Nair, Deputy Director
Watershed Protection Division, Environmental Services

Transportation and Environment Committee
June 7, 2021
Item d.1



Delivering world class utility services and programs
to improve our health, environment, and economy.

Environmental Services