

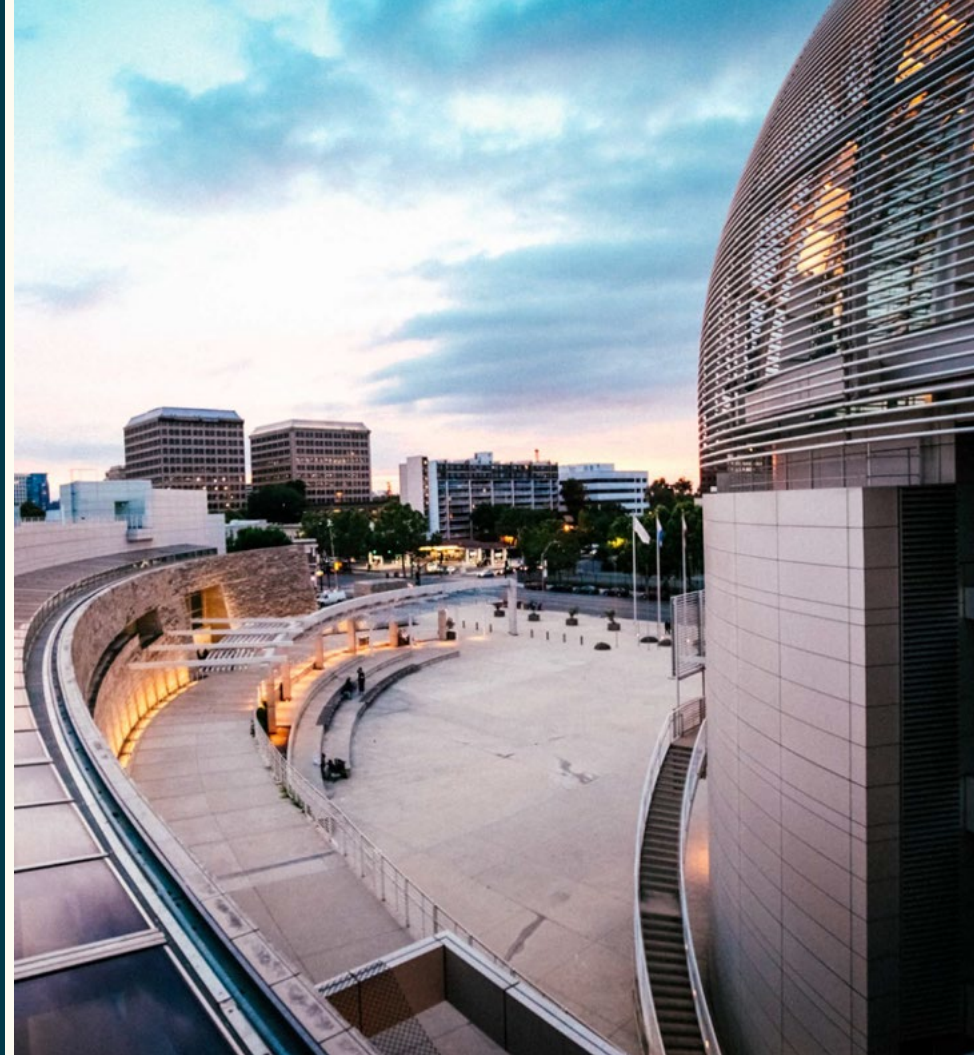


Integrated Water Infrastructure Program

Transportation & Environment Committee

December 07, 2020

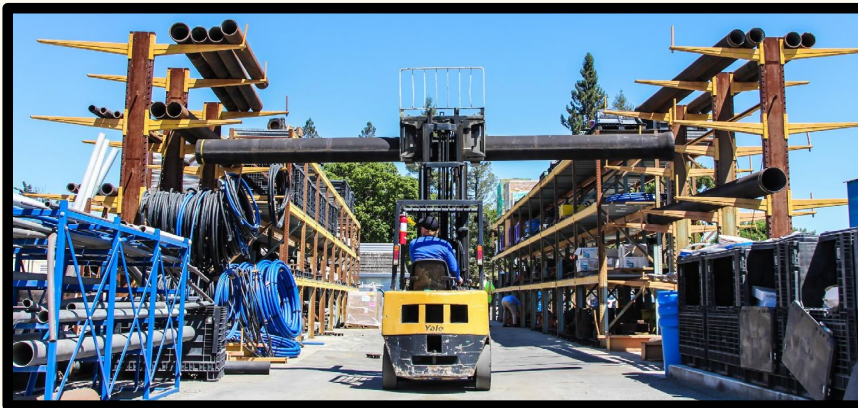
Presented by Jeff Provenzano, Deputy Director
– Water Resources Division



Integrated Water Infrastructure Program

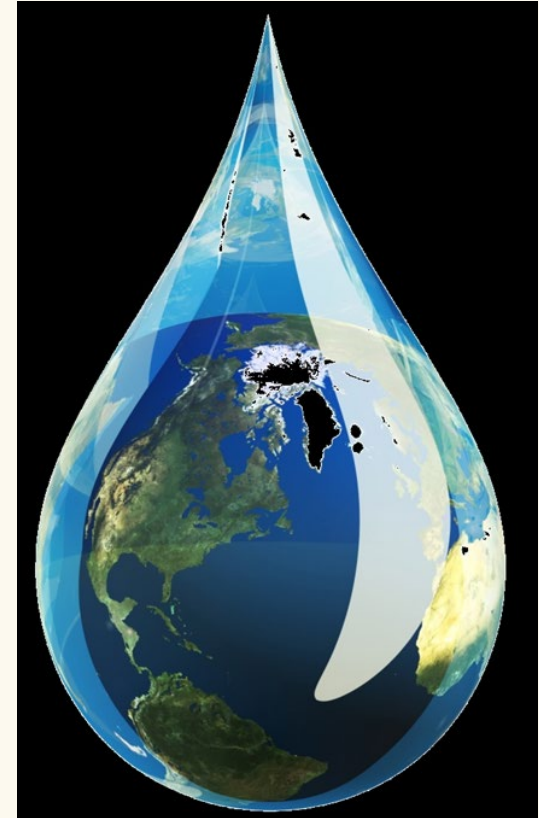
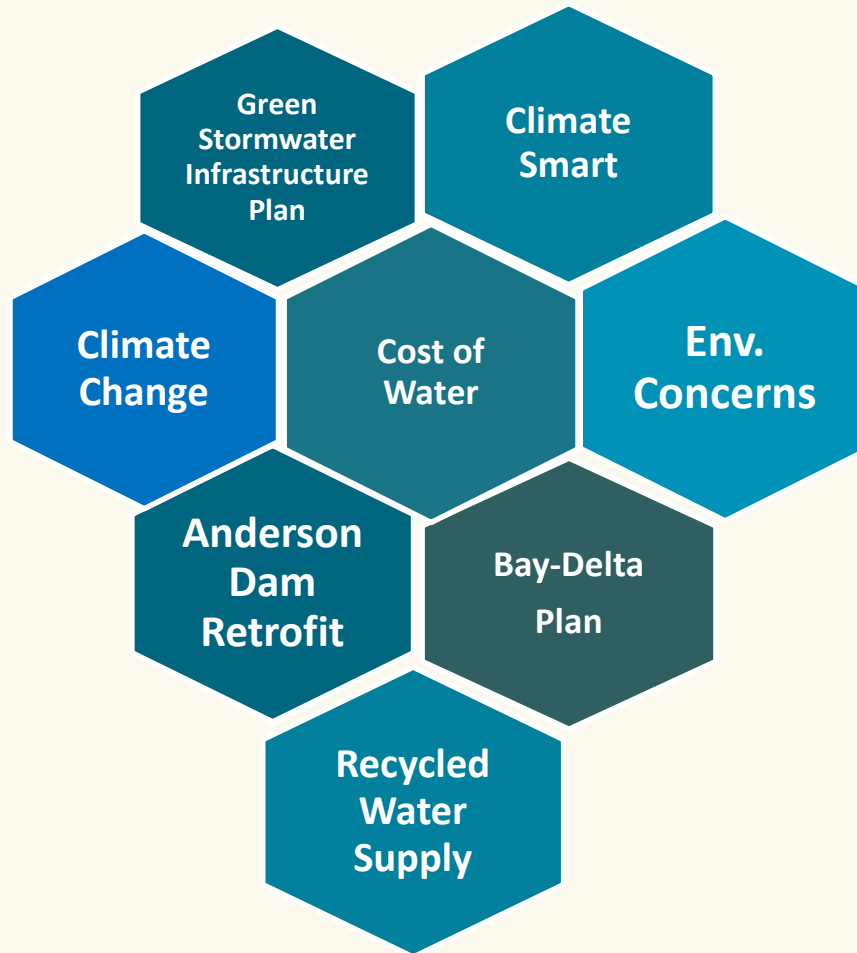
Objective

Integrate existing water infrastructure to create a cohesive distribution system conveying stormwater, non-potable groundwater, and recycled water in a way to maximize under-utilized assets and increase the non-potable water supply.



Integrated Water Infrastructure Program

Background



Integrated Water Infrastructure Program

Existing Infrastructure and Water Supply Options



What is non-potable water?

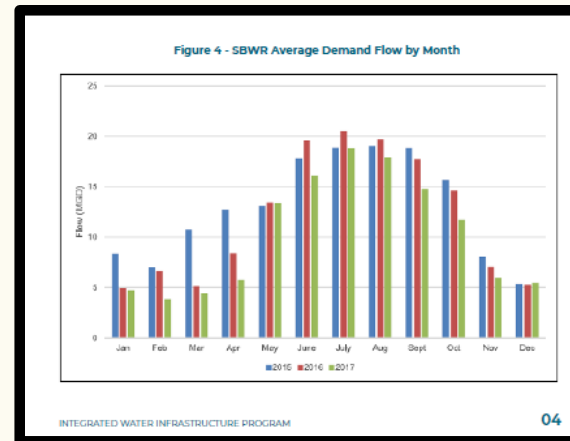
- Non-potable Groundwater Wells
- Non-potable Groundwater
- Groundwater Infiltration



Integrated Water Infrastructure Program


Objective
Integrate existing water infrastructure to create a cohesive distribution system conveying stormwater, non-potable groundwater, and recycled water to maximize underutilized assets and increase the non-potable water supply.

CITY OF SAN JOSE
CAPITAL OF SILICON VALLEY
Environmental Services



Objective
Integrate existing water infrastructure to create a cohesive distribution system conveying stormwater, non-potable groundwater, and recycled water to maximize underutilized assets and increase the non-potable water supply.

Introduction
Water recycling will be an important tool for future water security. There is strong economic and community support for additional non-potable, recycled, and alternative water supplies. Strategic investments in additional infrastructure will enable water conveyance systems to augment supplies during periods of high demand for recycled water. The Integrated Water Infrastructure Program seeks to diversify recycled water supply and increase water sales by generating revenue from non-recycled water sales. This necessary revenue will allow for the near-term (five years) development and integration of alternative water supplies. The Integrated Water Infrastructure Program will include the evaluation, design and pilot scale projects. These projects include integrating alternative water supplies into existing recycled water distribution system infrastructure.



Integrated Water Infrastructure Program Pg 3

- Stormwater & Stormwater Collection Systems
- Recycled Water & Recycled Water Distribution System

Integrated Water Infrastructure Program

Program Focus



Integrated Water Infrastructure Program

Program Focus #1 – Stormwater Treatment



- Dry-weather stormwater treatment
- Utilize stormwater system during summer months
- Integrate with recycled water system



Parallel Benefits

- Green Stormwater Infrastructure Plan, Climate Smart, and water supply restrictions related to climate change and environmental concerns

Integrated Water Infrastructure Program

Program Focus #2 – Non-potable Groundwater Supplies



- Existing non-potable groundwater wells
- Utilize both stormwater and recycled water systems



Parallel Benefits

- Cost effective alternatives, Climate Smart, recycled water expansion, Anderson Dam Retrofit Project, and water supply restrictions related to climate change and environmental concerns

Integrated Water Infrastructure Program

Program Focus #3 – Recycled Water / Non-potable Water Distribution Facilities



- Strategic infrastructure investment
- Conveyance methodologies



Parallel Benefits

- Climate Smart, recycled water expansion, Anderson Dam Retrofit Project, and water supply restrictions related to climate change and environmental concerns

Integrated Water Infrastructure Program

Funding Strategy & Next Steps



- Funding
 - Voluntary contributions from water retailers and partner agencies
 - Total \$2M over 5-year period
- Next Steps
 - Execute Agreements with interested Partners
 - Develop and implement pilot projects
- Project Milestones





Thank you

Jeff Provenzano, Deputy Director – Water Resources Division