



*Housing*

# Actions Related to Temporary Sheltering Operations and Services for COVID-19 Emergency Response

April 21, 2020  
Item 8.3

**Jacky Morales-Ferrand**  
Director

**Ragan Henninger**  
Deputy Director

# Shelters

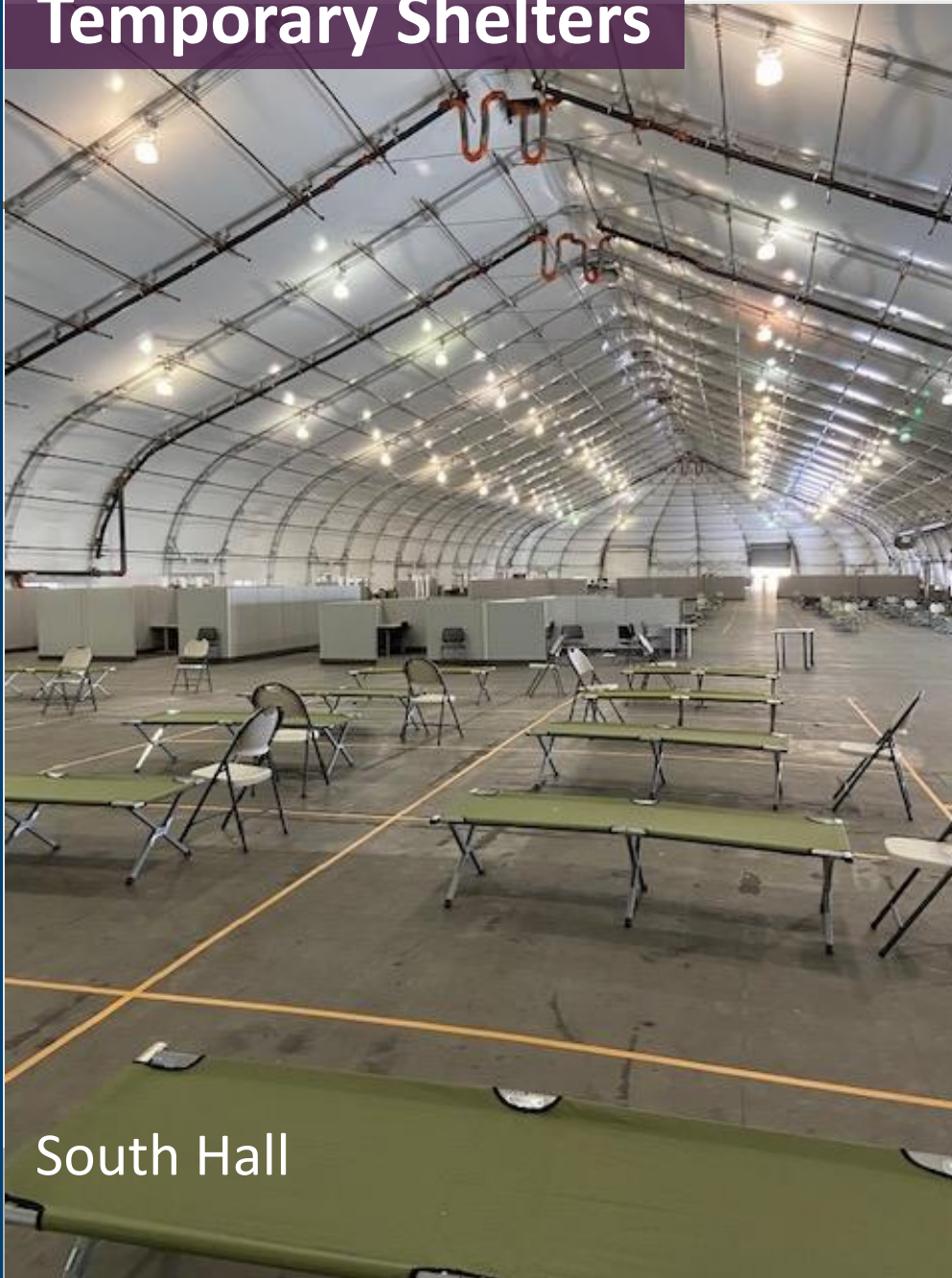
Organization	Capacity	Population
Bascom Community Center	No increase, change to 24/7 operation	General shelter
Southside Hall	283 new beds	General shelter
Parkside Hall	75 new beds	General shelter
Camden Community Center	40 new beds	Families
Maybury Road BHC	13 - change in population	Vulnerable
Plaza Hotel	23 - change in population	Vulnerable

# Recommended Action

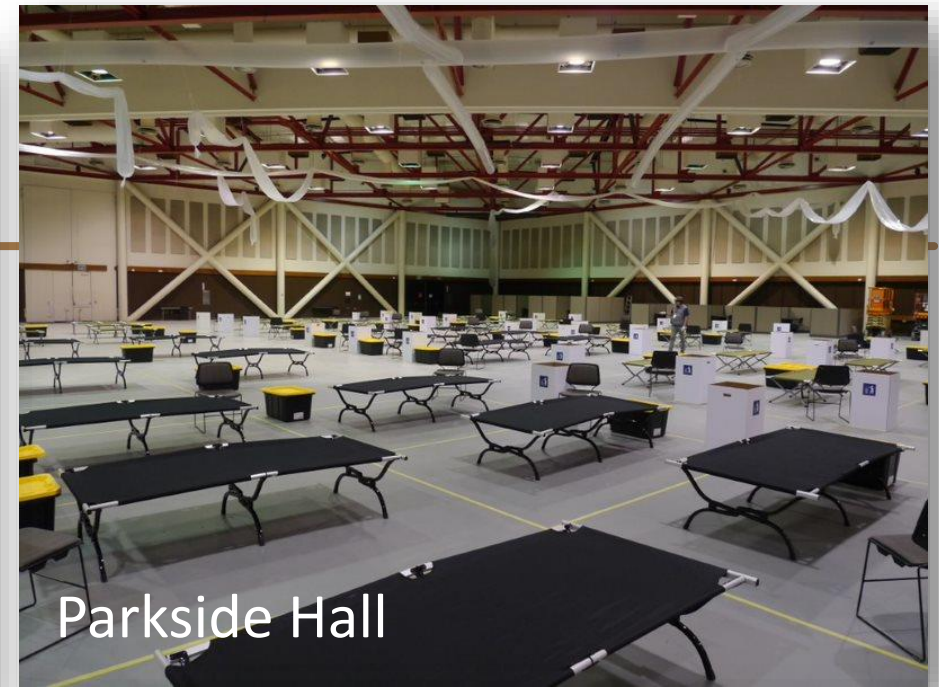
Org	Program	Action
HomeFirst	South Hall, Parkside Hall Camden Community Center Bascom Community Center	Adds locations Increases hours Increase total contract by \$2,850,860
HomeFirst	Maybury Road Bridge Housing	Allow placement of vulnerable persons during COVID-19 emergency
Allied Housing	Plaza Hotel interim housing site	Allow placement of vulnerable persons during COVID-19 emergency



# Temporary Shelters



South Hall



Parkside Hall



Camden  
Community  
Center



*Housing*

# Actions Related to Temporary Sheltering Operations and Services for COVID-19 Emergency Response

April 21, 2020  
Item 8.3

**Jacky Morales-Ferrand**  
Director

**Ragan Henninger**  
Deputy Director