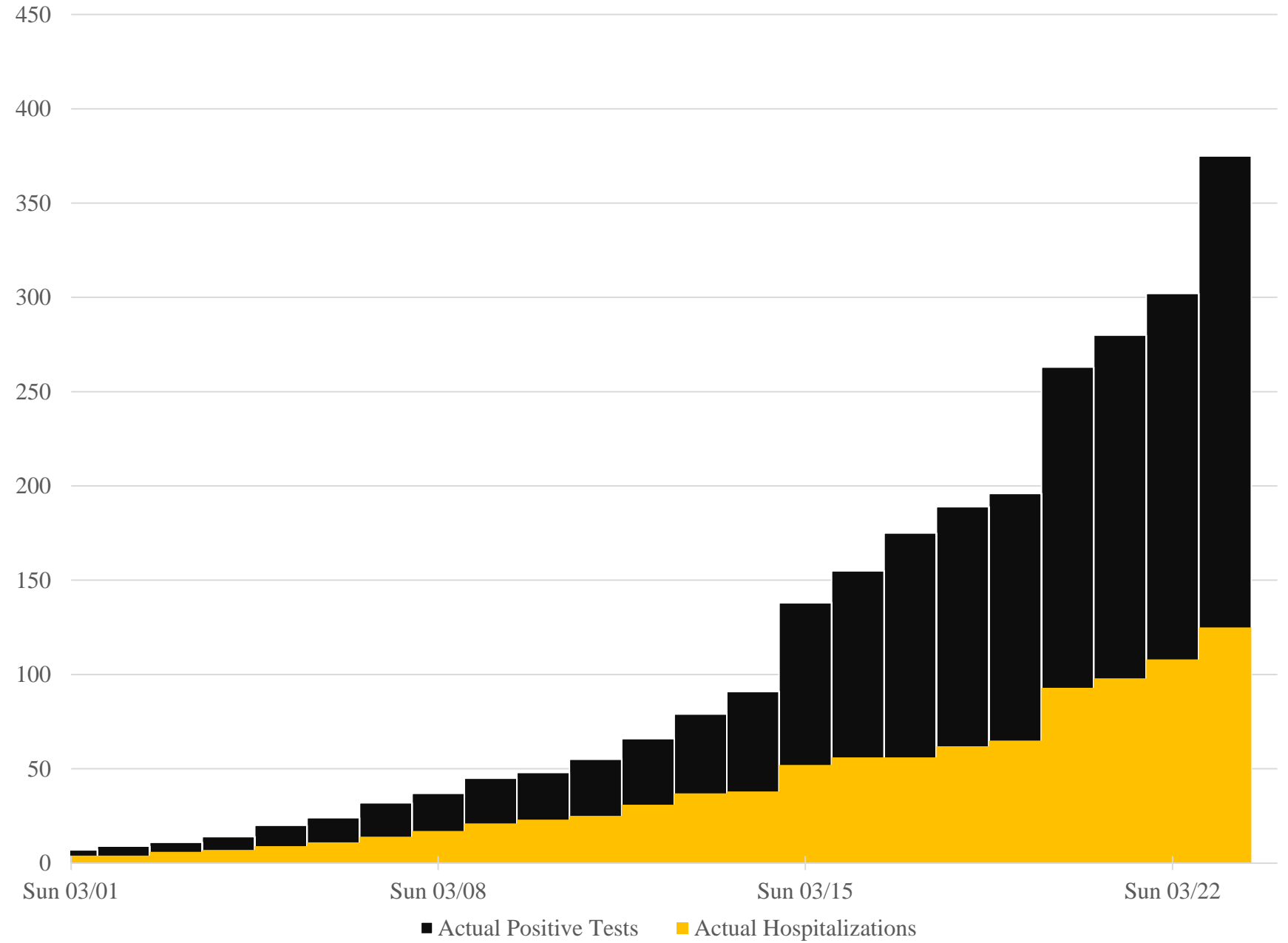


MODELING OF COVID-19 IN SANTA CLARA COUNTY

Confirmed cases and related hospital visits are rising

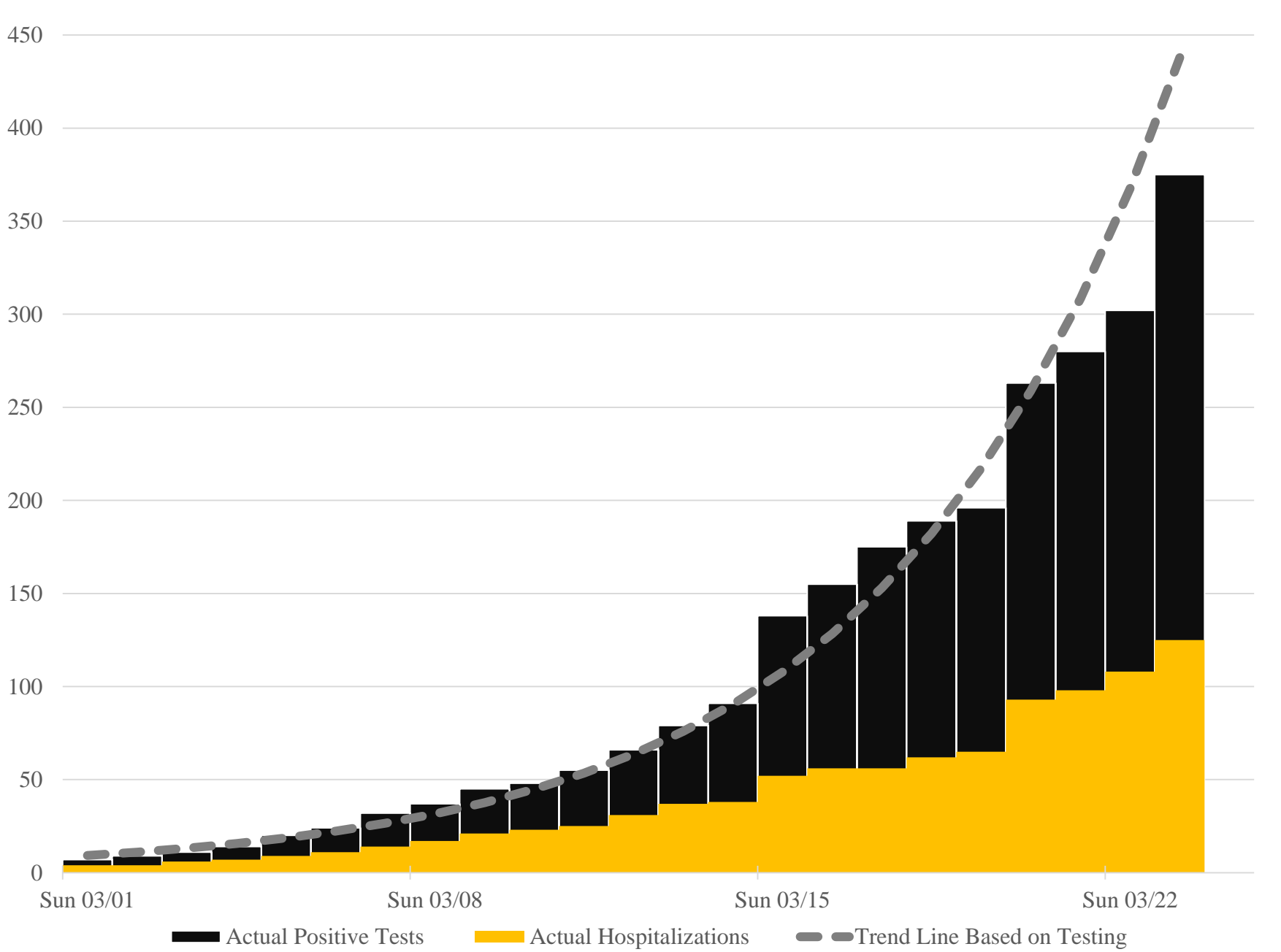
Confirmed Cases and Hospitalizations in Santa Clara County



They are rising at an exponential rate...

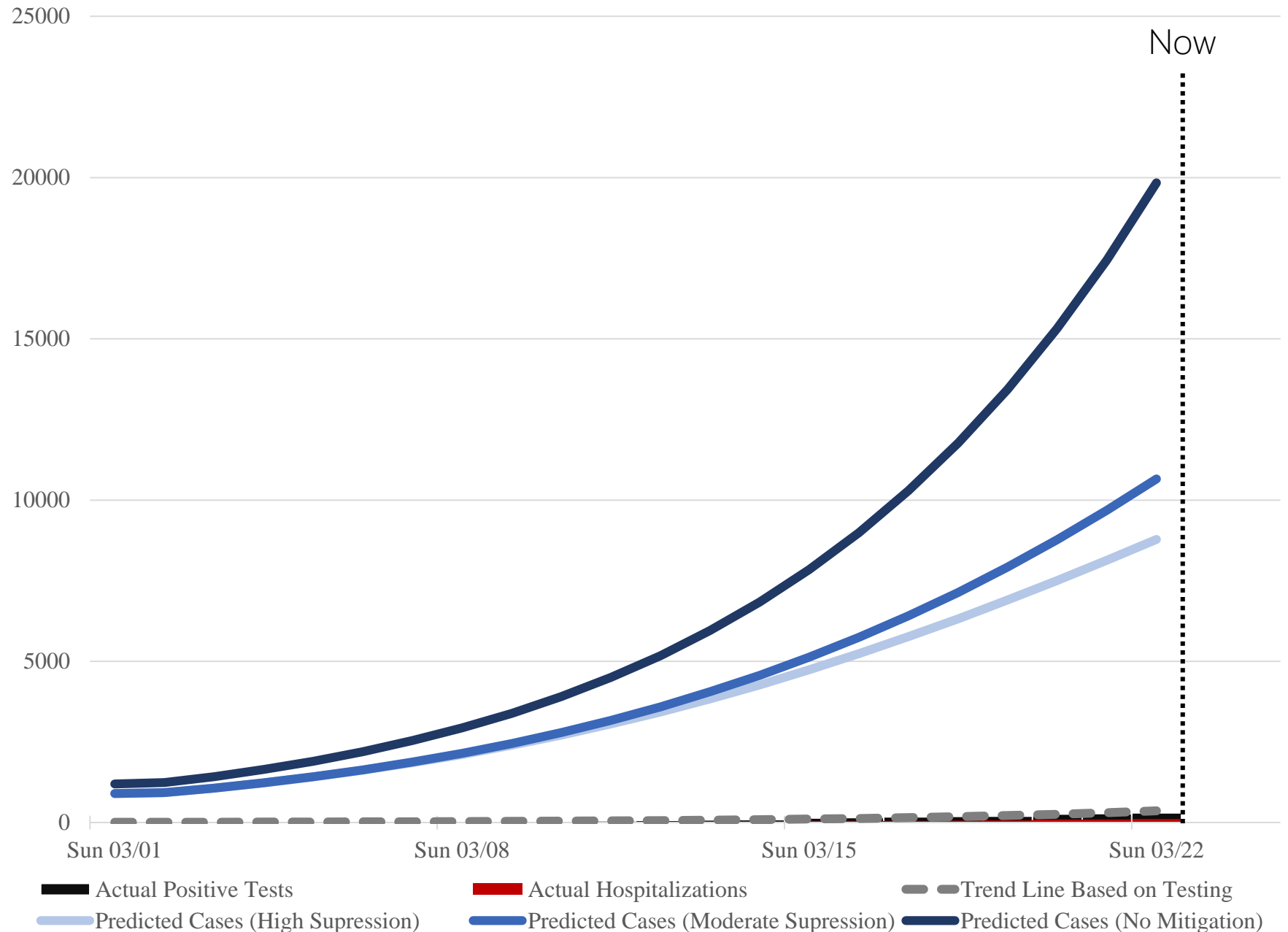
...and testing is falling behind the curve

Confirmed Cases and Hospitalizations in Santa Clara County



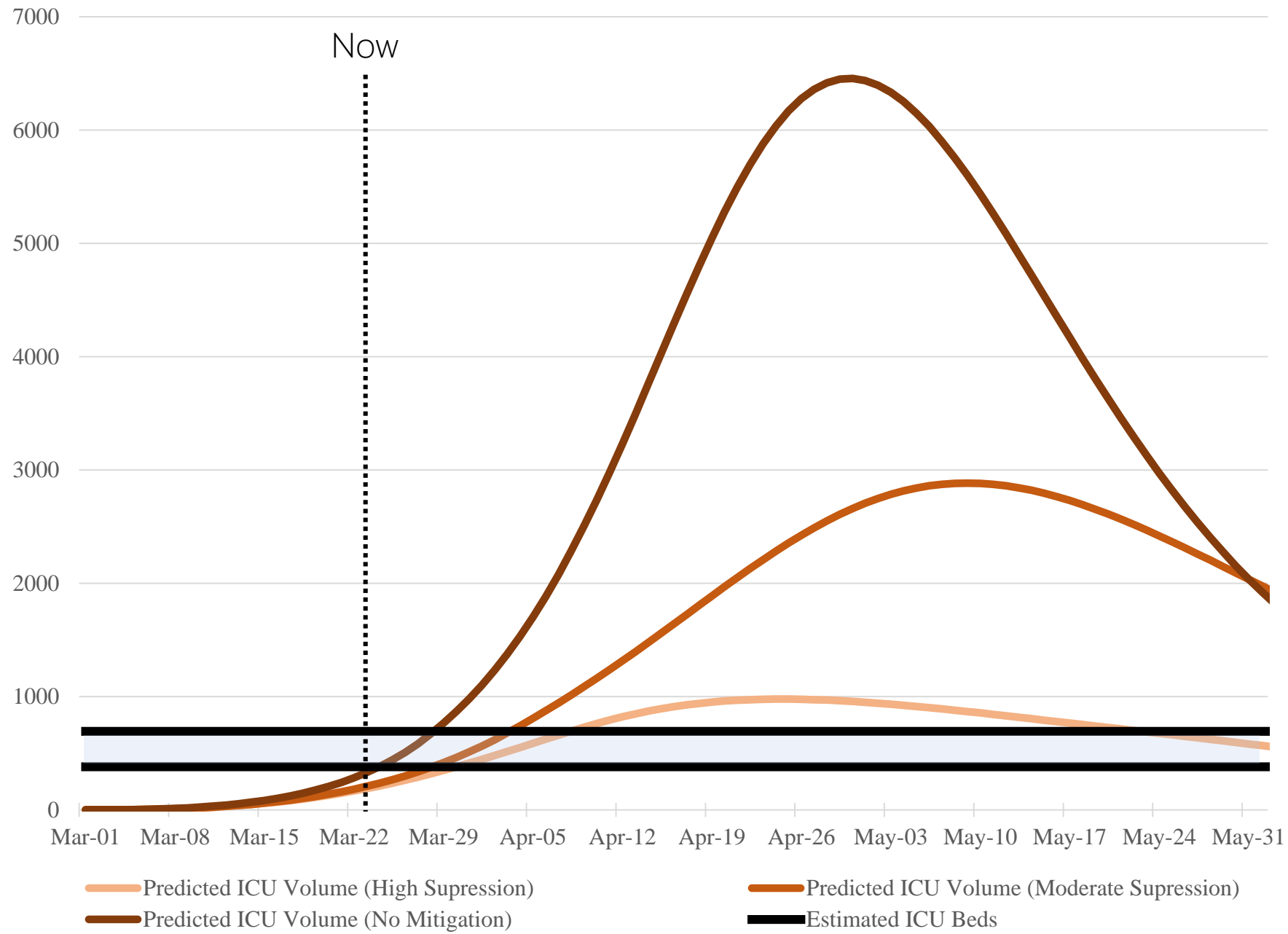
Testing lags
behind
predicted
cases by an
estimated
9000 – 19000
cases

Predicted Cases vs. Confirmed Cases in Santa Clara County



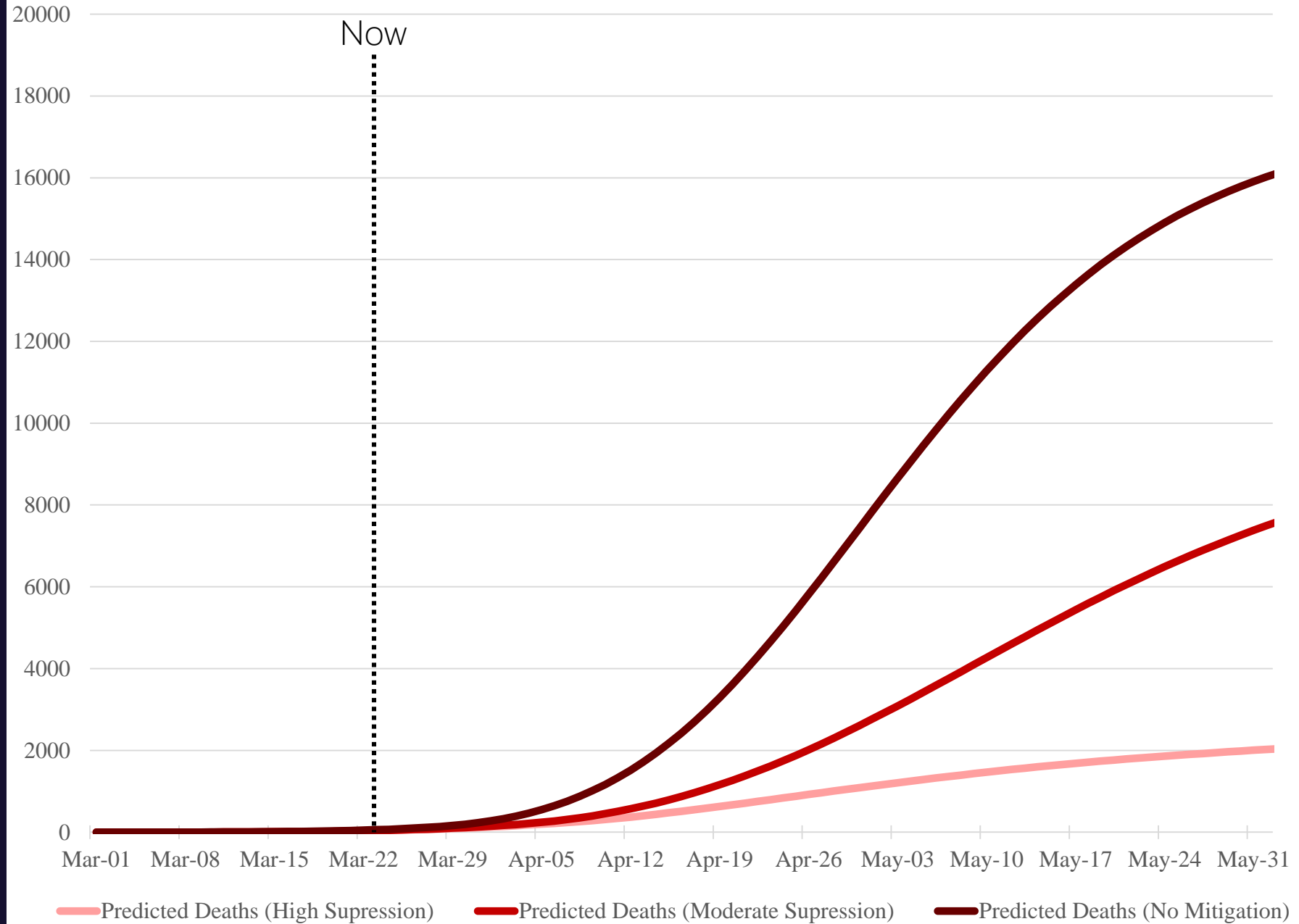
We can
flatten the
curve
enough
through
compliance
with public
health order

Estimated ICU Needs and ICU Capacity



Flattening
the curve
can save
thousands
of lives

Predicted Deaths from COVID-19 in Santa Clara County



Slow and reduce the spread of COVID-19, and support our most at-risk people

Roadmap through the Epidemic: City Response – Highest Priority Actions

1. Compliance with Public Health Orders ("Shelter in Place")
 - + Education, enforcement and engagement
2. Essential Services (Continuity of City Operations)
 - + Ensuring essential services are provided safely for the duration of the epidemic
3. Support for At-Risk Communities/Populations
 - Food & Necessity Distribution and Feeding
 - Senior Support and Services
 - Medically At-Risk Support and Services
 - Homeless Support and Services
 - Housing for Quarantine and Isolation
 - Local Assistance for:
 - Individuals and Families
 - Small Business and Non-Profit Support
 - + County wide food distribution, focusing first on the most at-risk and then, scale and sustain
 - + Support seniors in isolation
 - + Support medically at-risk populations in isolation
 - + Increase hygiene services and health support to homeless population
 - + Identification and provision of housing for those in quarantine or isolation who cannot do so on their own
 - + Local assistance for individuals and families
 - + Support small businesses and develop understanding of new forms of assistance (e.g. SBA) and begin to operationalize
4. Powered by People – Support our people so they can act
 - Ensure Safety of City Staff Performing Essential Services
 - Families Support for City Staff Performing Essential Services (including childcare)
 - + Support safety of City Staff performing essential services
 - + Prioritize testing, child care, and other support services for staff performing essential services

Enabling Actions Supporting the Response

- Silicon Valley Strong Campaign
 - Non-Profit & Private Sector Mobilization and Response
 - Volunteer Mobilization and Response (Food Distribution)
 - + A public campaign amplifying public health messages, raising funds, and volunteers.
- Communications with Community and Language Capacity
 - + Messaging to broader community with focus on most at-risk in multi languages.
- Reassignment of Staff in Non-Essential Services
 - + Temporarily re-assign staff in non-essential services to essential or emergency management functions.
- Scaling Remote Working Capacity for City Staff
 - + Rapidly building up our remote worker capacity and providing support services to those working from home.
- Understanding Future Trajectory of Epidemic and Response Options
 - + Modeling and understanding future trajectory of COVID-19.

Slow and reduce the spread of COVID-19, and support our most at-risk people

Additional Priority Actions

- **Advocacy and Funding Coordination at State and Federal Level** + Coordinated approach to federal, state, local, and privately raised funds with a focus on effective response and cost recovery for the City organization and supporting the most at-risk in our community
- **Homeless Prevention and Eviction Support** + Operationalize Eviction policy and ramp up homeless prevention efforts in coordination with non-profits
- **Preparation for Civil Disturbance, Hospital Triage Neighborhood Quarantine/Cordon Sanitaire** + Review of strategic approach and plans for dealing with civil disturbance, supporting county health triage, and more intense quarantine

Guidance

- ❑ This is going to be long and hard, start by focusing on the next 12 weeks.
- ❑ We can't do everything. What can we do now that has the most positive outcome for our community?
- ❑ Break work down into 1 week sprints with a clear definition of done for the most important work.

Community Value

What is the relative value to the community and how does it contribute to response?

Opportunity Enablement / Risk Mitigation

Would failure to complete open the community up to risk for human, material, economic, or environmental losses?

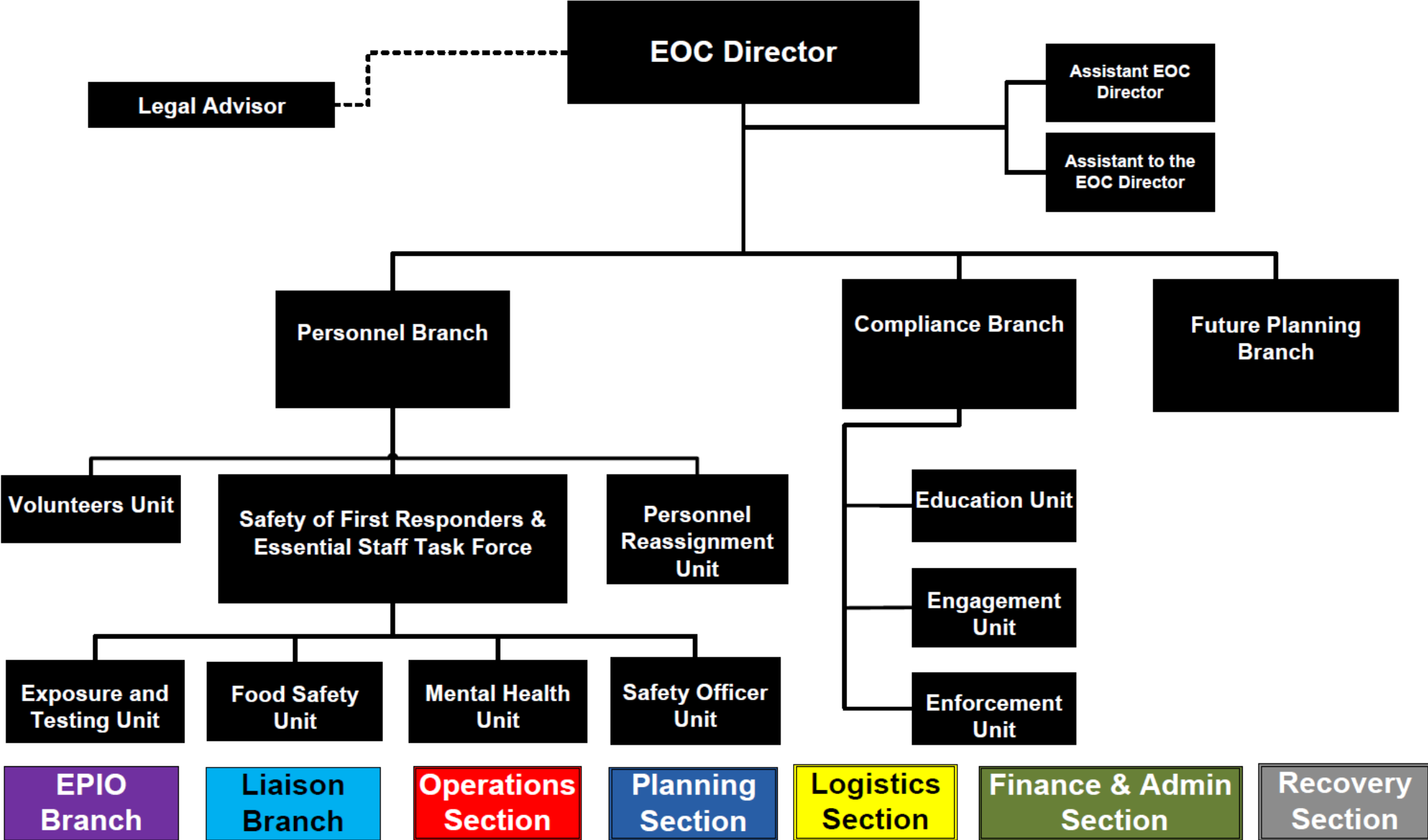
Time Criticality

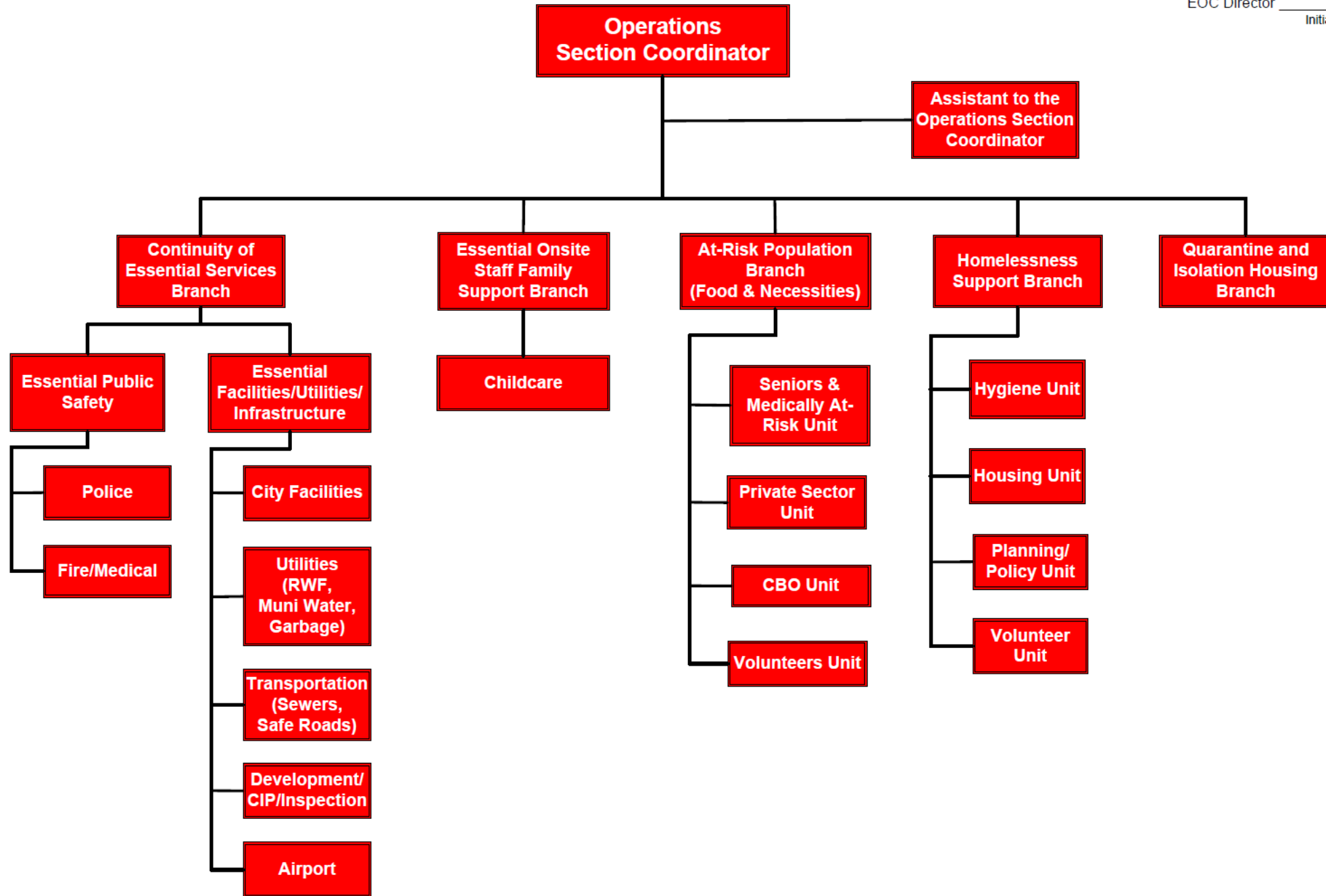
How important is it that this initiative gets done now?
Can it be delayed?
Is there a fixed deadline?

Job Duration

What can be done in 1 week?
Can it be chunked down smaller?

EMERGENCY OPERATIONS CENTER ORGANIZATION





Slow and reduce the spread of COVID-19, and support our most at-risk people

Roadmap through the Epidemic: City Response – Highest Priority Actions

1. Compliance with Public Health Orders ("Shelter in Place")
 - + Education, enforcement and engagement
2. Essential Services (Continuity of City Operations)
 - + Ensuring essential services are provided safely for the duration of the epidemic
3. Support for At-Risk Communities/Populations
 - Food & Necessity Distribution and Feeding
 - Senior Support and Services
 - Medically At-Risk Support and Services
 - Homeless Support and Services
 - Housing for Quarantine and Isolation
 - Local Assistance for:
 - Individuals and Families
 - Small Business and Non-Profit Support
 - + County wide food distribution, focusing first on the most at-risk and then, scale and sustain
 - + Support seniors in isolation
 - + Support medically at-risk populations in isolation
 - + Increase hygiene services and health support to homeless population
 - + Identification and provision of housing for those in quarantine or isolation who cannot do so on their own
 - + Local assistance for individuals and families
 - + Support small businesses and develop understanding of new forms of assistance (e.g. SBA) and begin to operationalize
4. Powered by People – Support our people so they can act
 - Ensure Safety of City Staff Performing Essential Services
 - Families Support for City Staff Performing Essential Services (including childcare)
 - + Support safety of City Staff performing essential services
 - + Prioritize testing, child care, and other support services for staff performing essential services

Enabling Actions Supporting the Response

- Silicon Valley Strong Campaign
 - Non-Profit & Private Sector Mobilization and Response
 - Volunteer Mobilization and Response (Food Distribution)
 - + A public campaign amplifying public health messages, raising funds, and volunteers.
- Communications with Community and Language Capacity
 - + Messaging to broader community with focus on most at-risk in multi languages.
- Reassignment of Staff in Non-Essential Services
 - + Temporarily re-assign staff in non-essential services to essential or emergency management functions.
- Scaling Remote Working Capacity for City Staff
 - + Rapidly building up our remote worker capacity and providing support services to those working from home.
- Understanding Future Trajectory of Epidemic and Response Options
 - + Modeling and understanding future trajectory of COVID-19.