

City of San Jose Sexual Assault Analysis

Dr. Michael Smith

Dr. Rob Tillyer

University of Texas at San Antonio

November 12, 2019

Data & Methodology

- Three sources of data were shared:
 1. 2010-Jun. 2012
 2. Jul.-Dec. 2012
 3. 2013-2018
- Variables were created that measured:
 - Victim characteristics (Age, Gender, Race/Ethnicity)
 - Offender/Suspect characteristics (Age, Gender, Race/Ethnicity)
 - Incident characteristics (Date, Time, Day of the Week, Organizational Location, Location Type, Type of Offense, Weapon Type, Relationship of Offender/Suspect to Victim)

Data & Methodology

Important Considerations:

1. Change in sexual assault definition
 - Officially changed in 2013
 - Implemented by SJPD in 2015
2. Not all variables were available for all time periods
3. All time related variables were measured using the *occurred* date and time, while the categorization of the event was based on when it was *reported*.

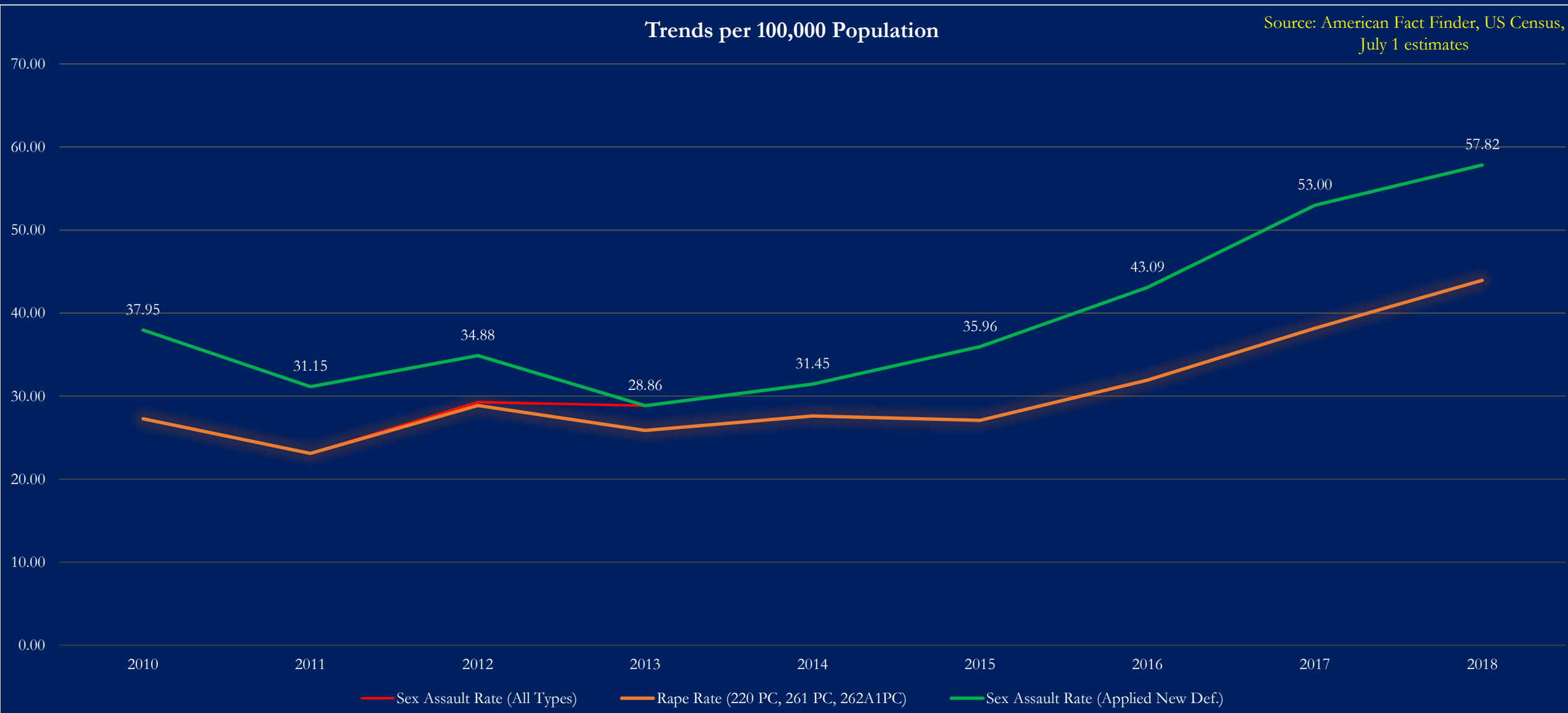
Sex Assault Rate 2010-2018



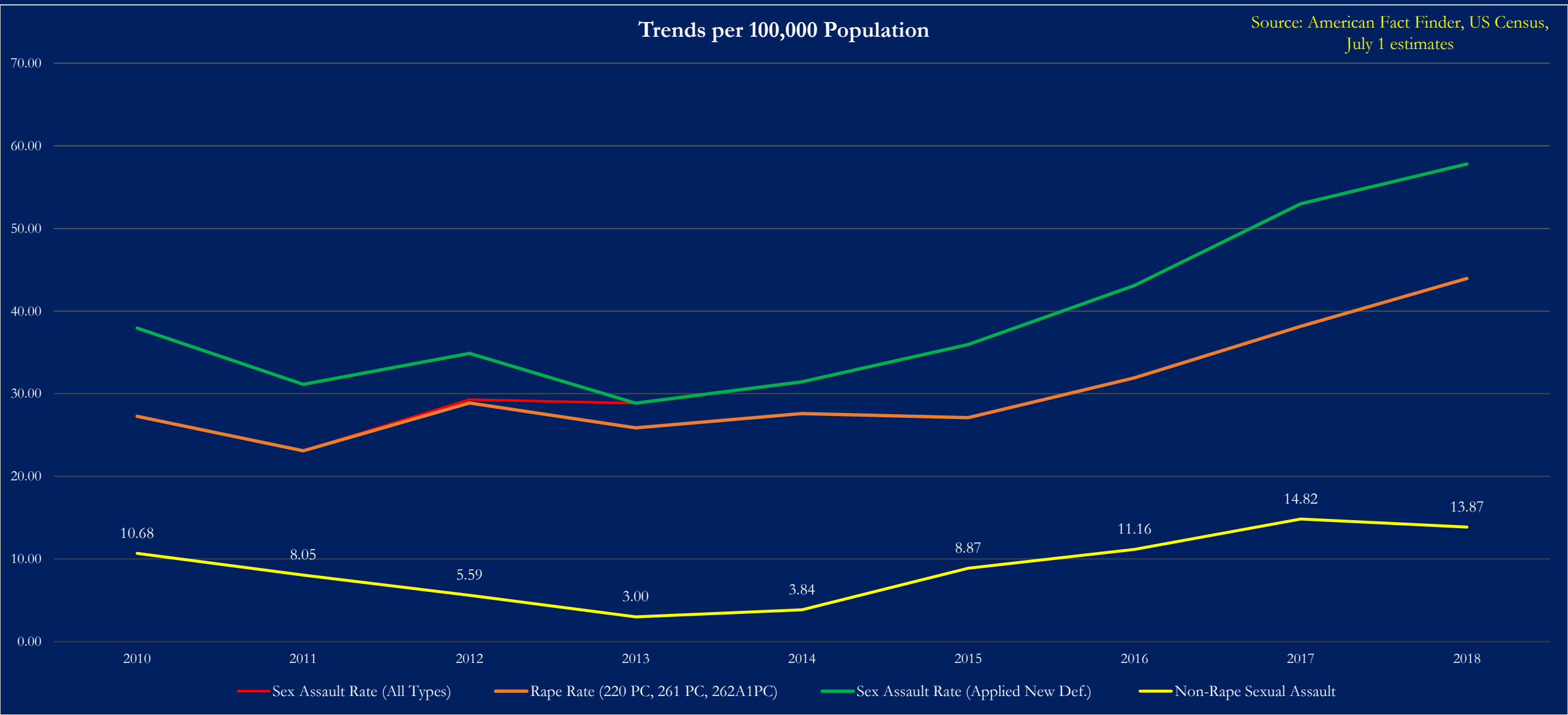
Sex Assault Rate 2010-2018



Sex Assault Rate 2010-2018



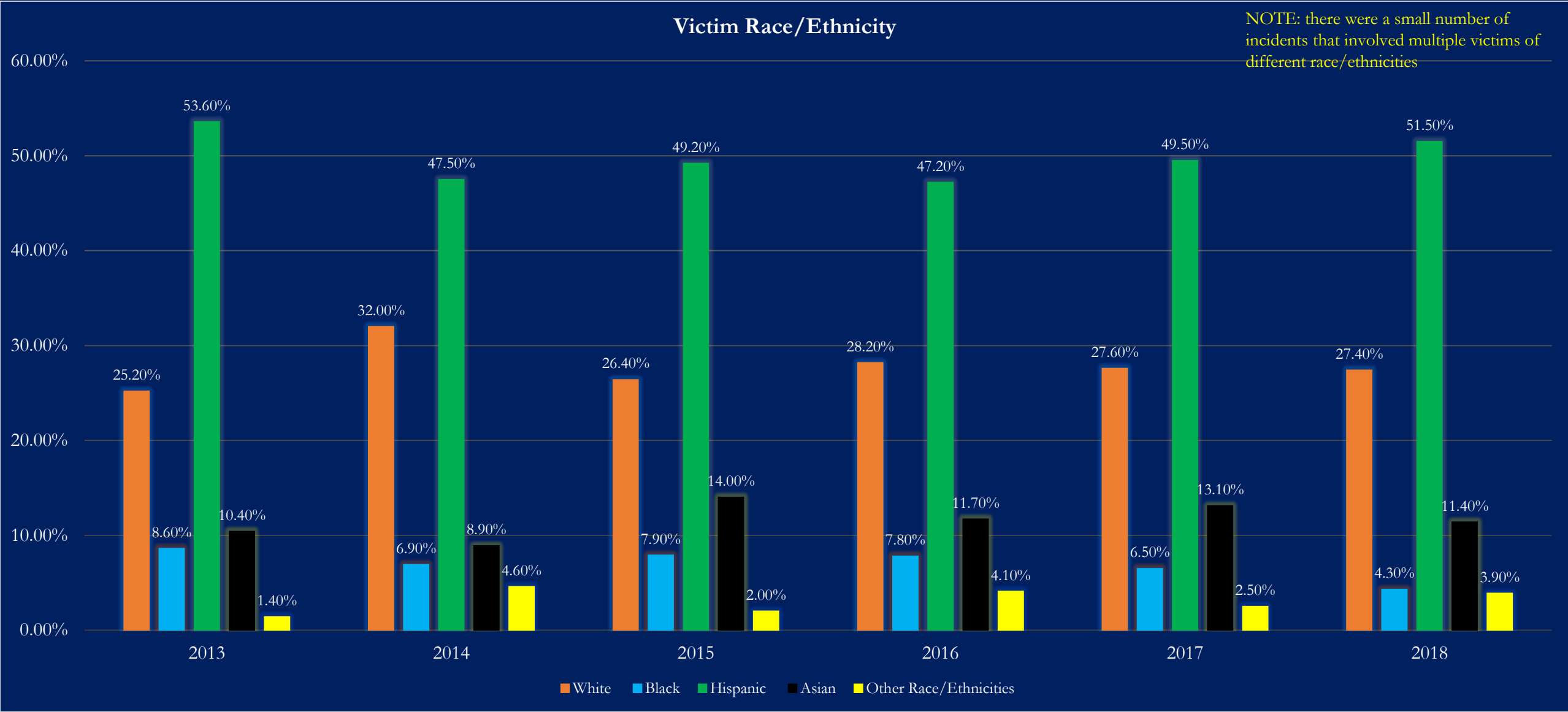
Sexual Assault Offenses 2010-2018



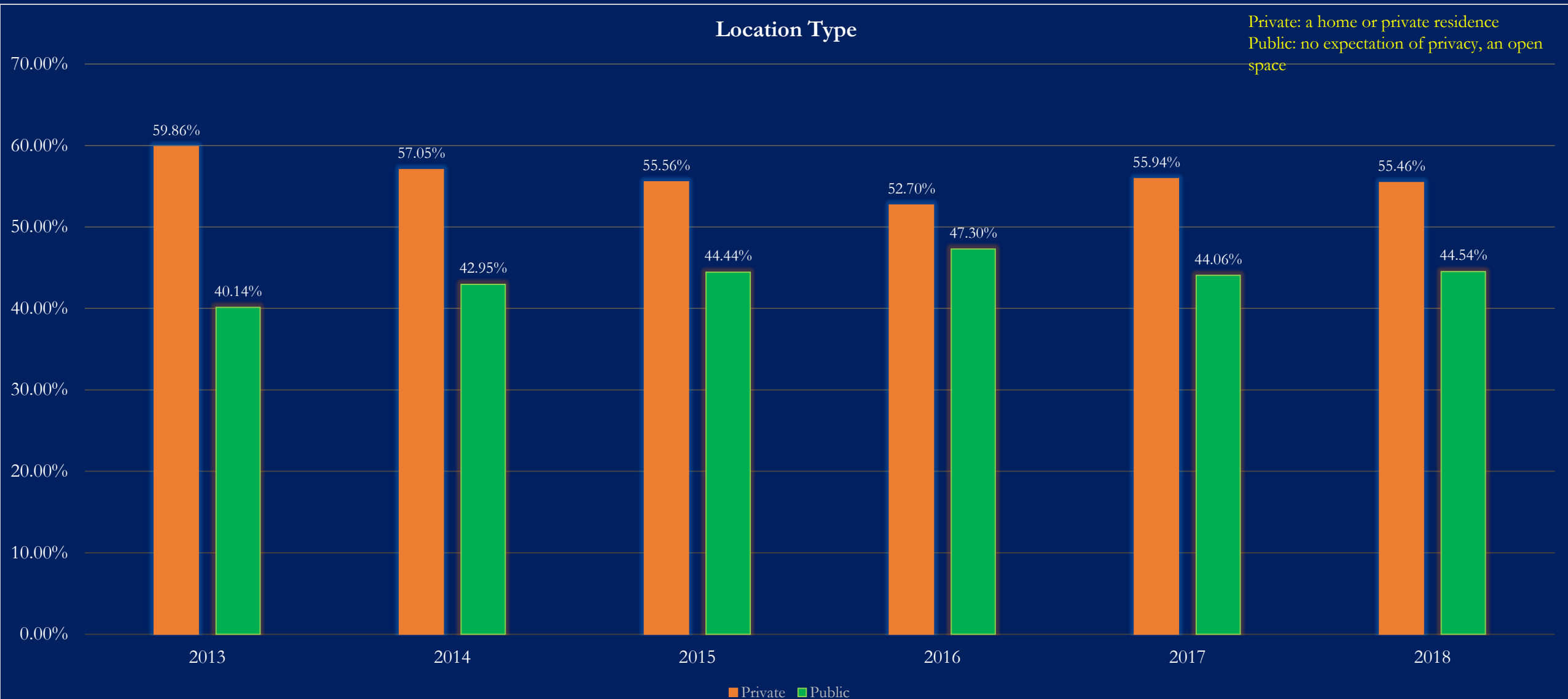
Juvenile Victim Rate 2013-2018



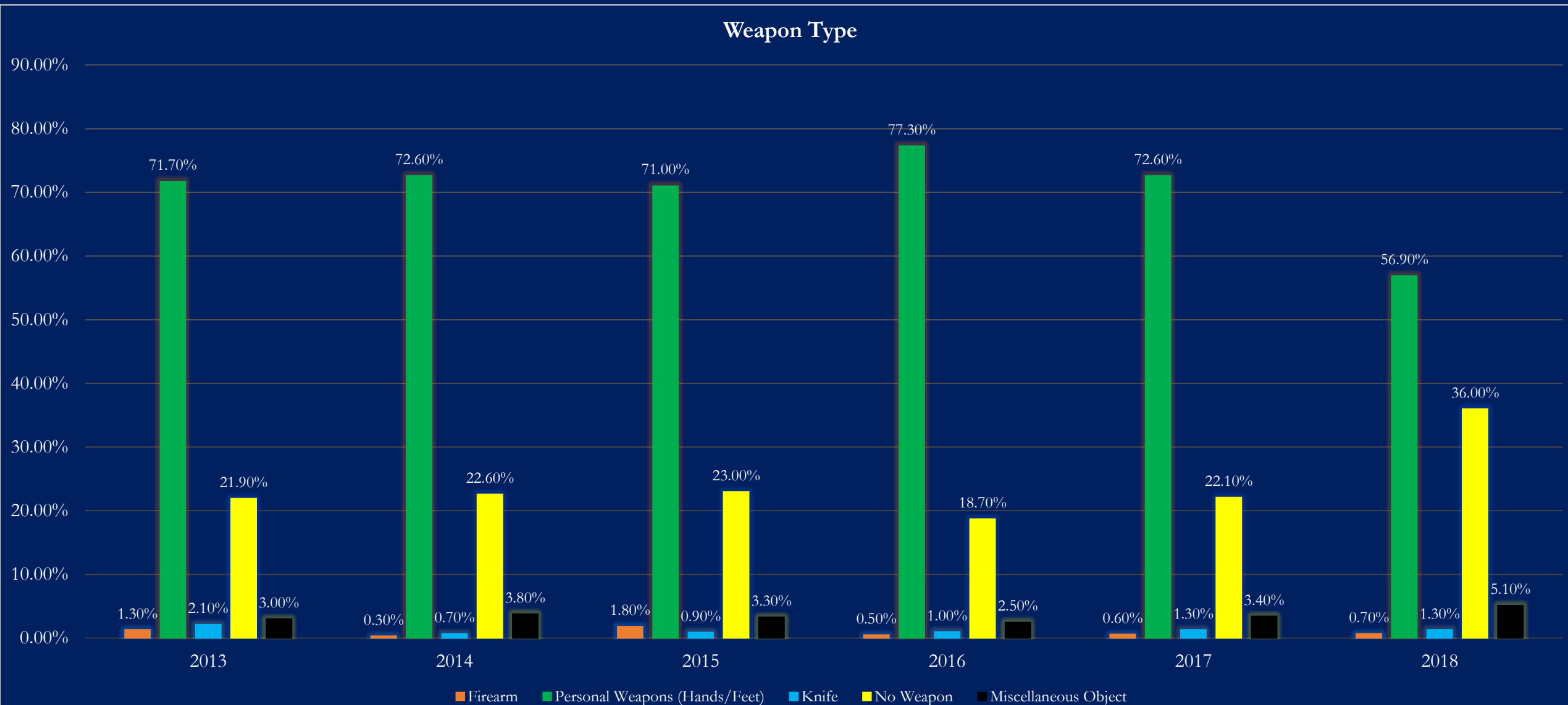
Victim Race/Ethnicity Rate 2013-2018



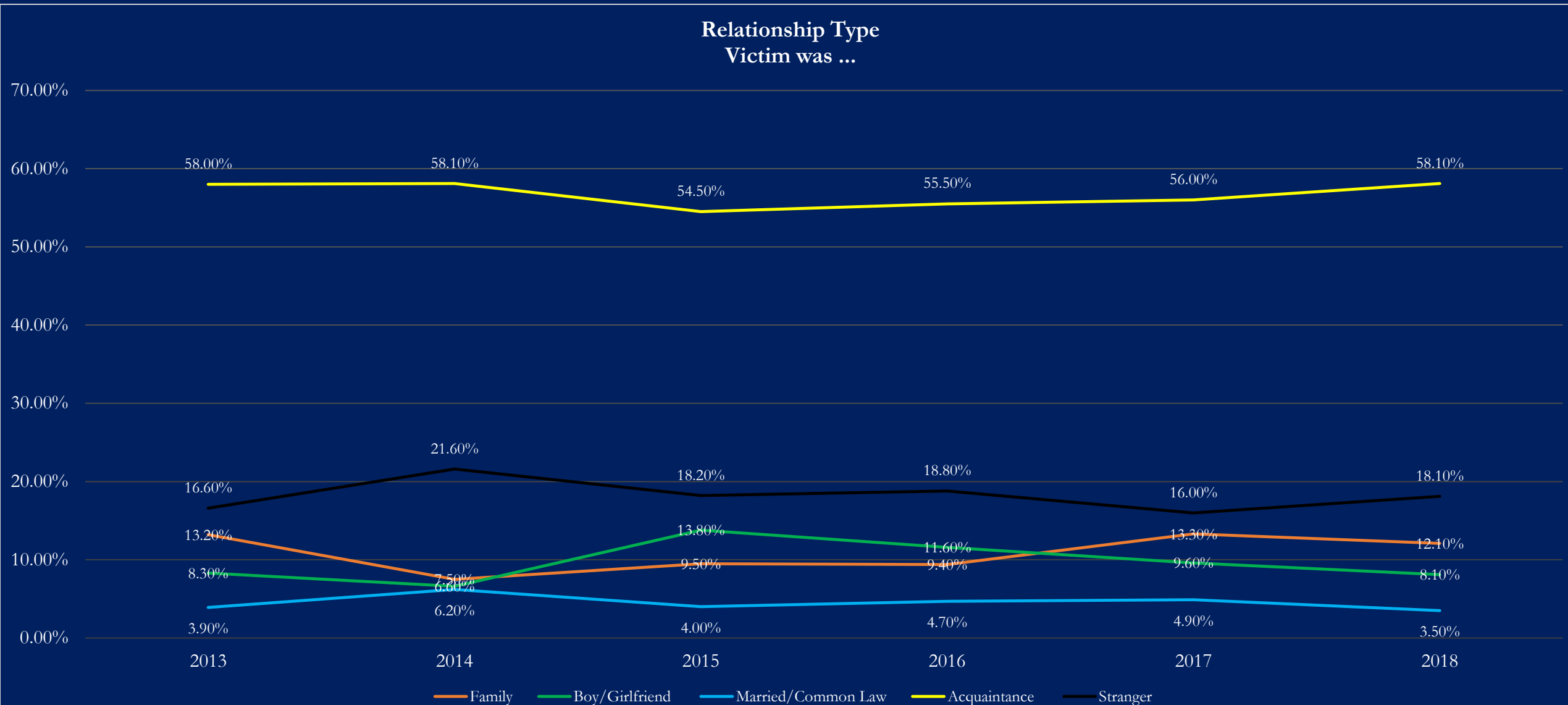
Location Type 2013-2018



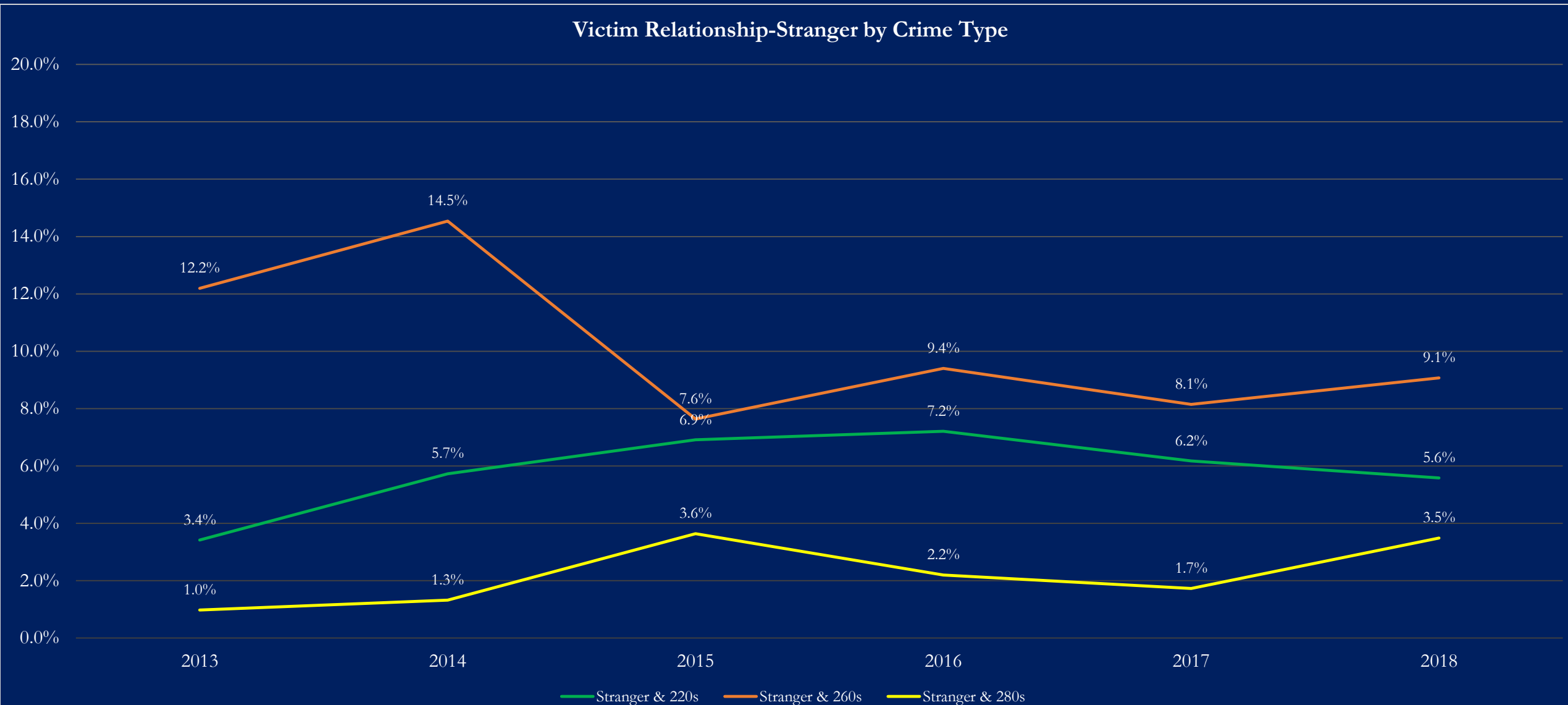
Weapon Type 2013-2018



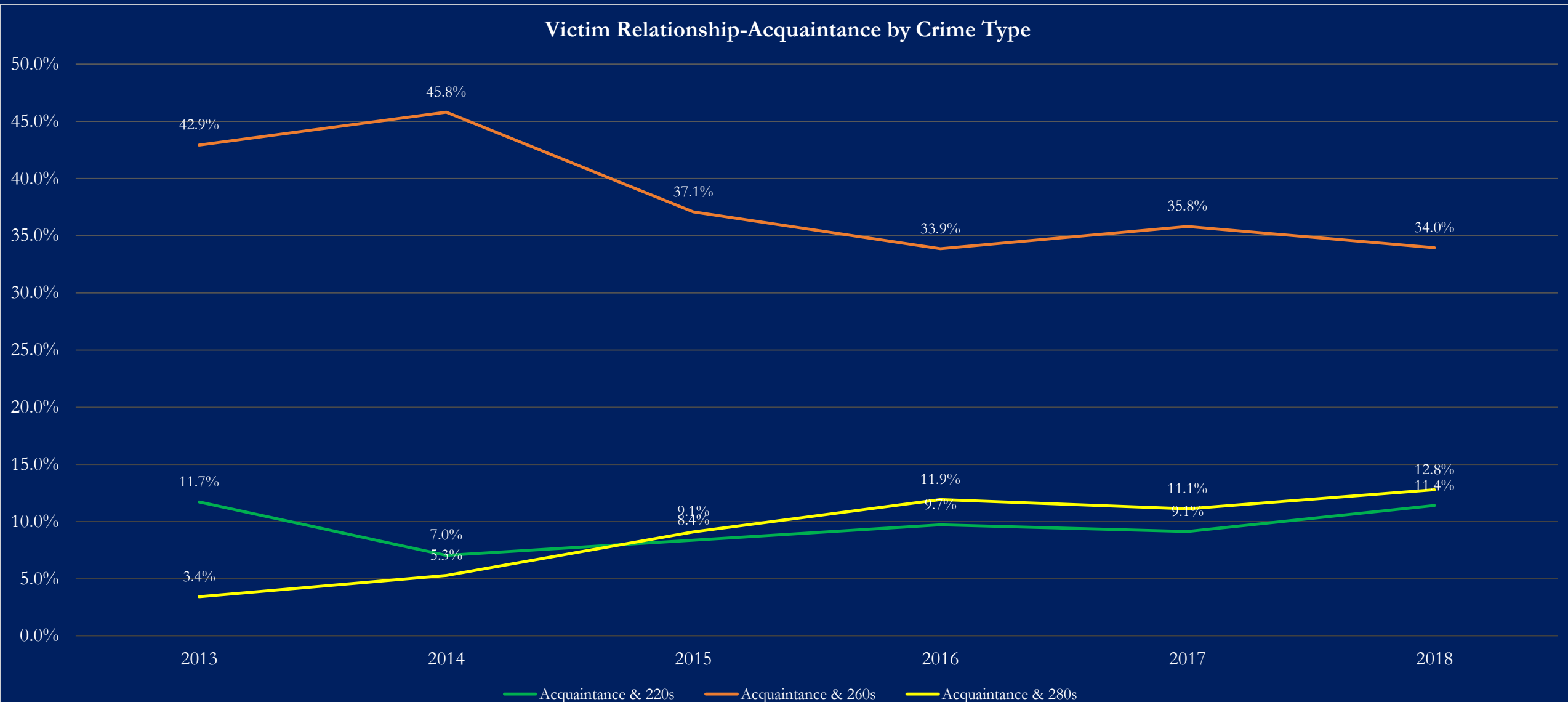
Relationship Type 2013-2018



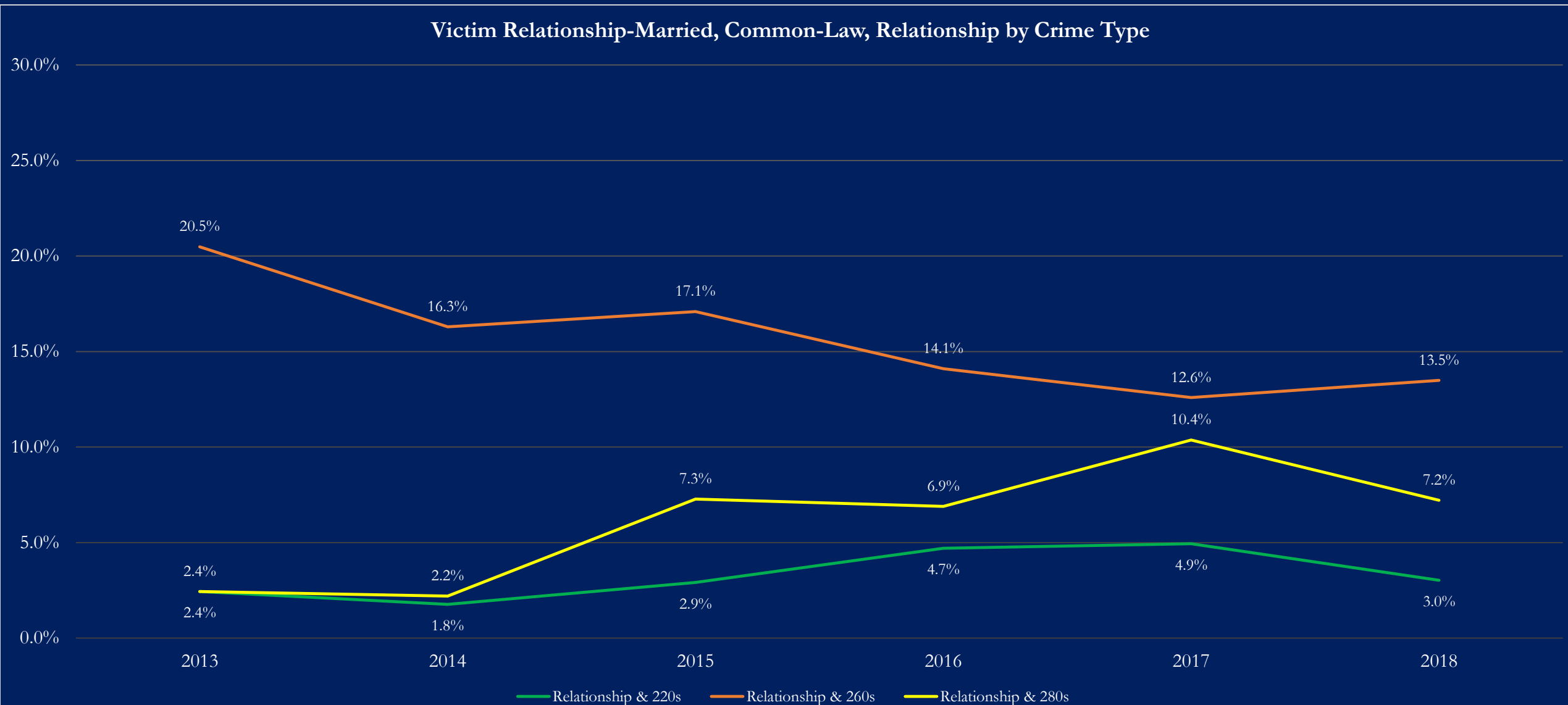
Strangers & Crime Type 2013-2018



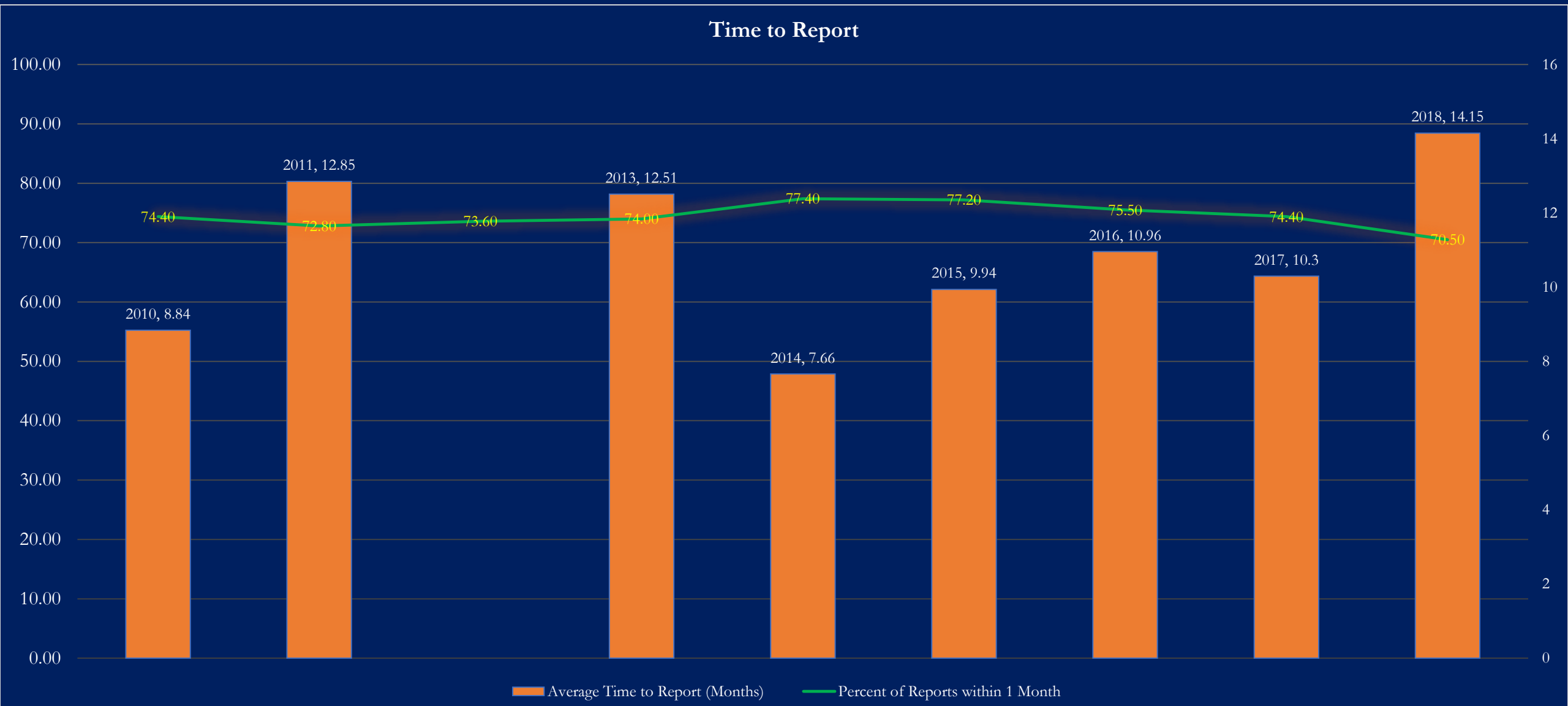
Acquaintances & Crime Type 2013-2018



Familial Relationships & Crime Type 2013-2018



Time To Report 2010-2018



Geographic Distribution by Districts 2013-2018

Increasing by more than 50%

- E
 - 2013: 6 Cases, 2.1%
 - 2018: 28 Cases, 4.6%
- Y
 - 2013: 9 cases, 3.1%
 - 2018: 38 cases, 6.2%

Increasing by less than 50%

- M
- N
- P
- R
- S
- T
- X

Decreasing

- A
- C
- F
- K
- L
- V
- W

