

Vision Zero Dashboard - Crashes from January 1 2014 to December 31 2018

Involved With	Total Crashes	Fatal Injuries	Severe Injuries	Moderate Injuries	Minor Injuries	Total Injuries
Pedestrian	1459	105	210	584	575	1474
Motor Vehicle	24945	128	496	2773	9889	13286
Bicycle	1509	20	113	654	597	1384
Total	27913	253	819	4011	11061	16144

[Clear Selections](#)

Date Range Slider



Year

- 2014
- 2015
- 2016
- 2017
- 2018

View KSI Crashes O...

- KSI

View Fatal Crashes Only

- Fatal

Ages Invol...

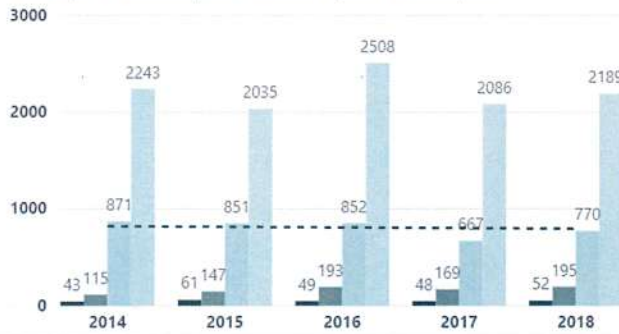
- (Blank)
- 0-15
- 16-29
- 30-49
- 50-64
- 65+

Select VZ Corridor

All

Injuries by Year

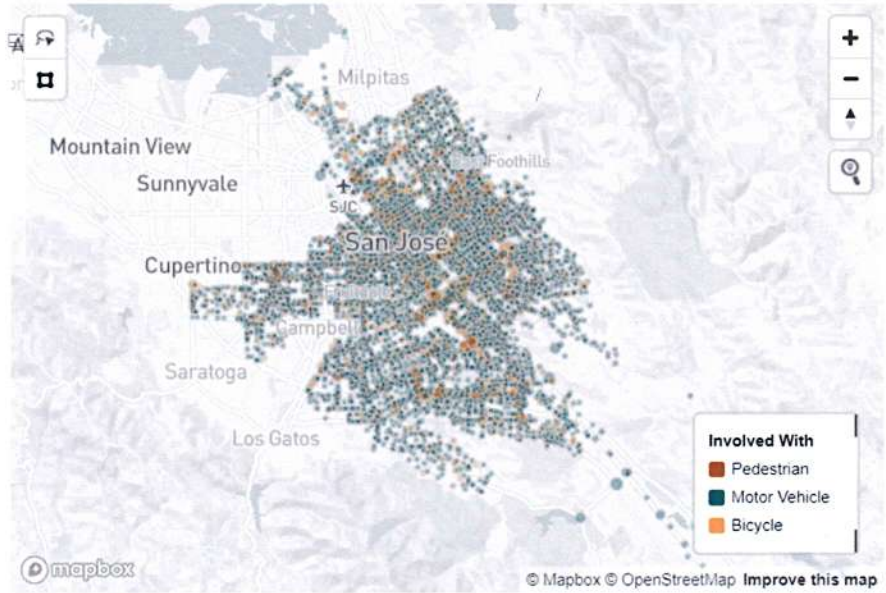
- FatalInjuries
- SevereInjuries
- ModerateInjuries
- MinorInjuries



Select ETS Segment

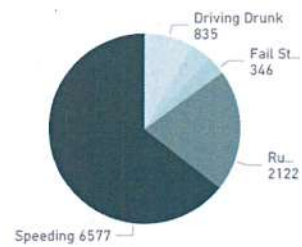
All

Involved With and Crash Count by Latitude and Longitude



District	Crashes
1	1499
2	1342
3	5544
4	2517
5	3378
6	3032
7	3469
8	1673
9	1874
10	1692

Crashes by Top 5 Known Violations



Type of Collision

