

# *Police Secondary Employment Unit & Traffic Control Costs for Outdoor Special Events*

CEDC – April 22, 2019

# Secondary Employment Unit (SEU)

## Current Staffing vs. 2012 Staffing

- 1/2 Lieutenant
  - 1 Sergeant
  - 1 Office Specialist
    - 400+ Events yearly
- 1/2 Lieutenant
  - 1 Sergeant
  - 1/2 Office Specialist
    - 280 Events yearly

# SEU Assignments

- Street closures
- Alcohol sales on a public property
- One-Day Beer & Wine Permits
- Outside businesses also hire SEU Officers
  - SAP Arena
  - Avaya Stadium
  - Convention Center
  - Water District
  - Santana Row
  - Regional Medical Center
  - Community Centers
  - Schools

# SEU and Traffic Control Staffing

- Off-Duty Officers are hired to work for 3<sup>rd</sup> party private businesses as security/ traffic control. Also hire Off-Duty officers to work on-duty for city funded assignments.
- Community Service Officers (CSO) for overtime (On-Duty).
- Parking Traffic Control Officers (PTCO) for overtime (On-Duty)

# Staffing Considerations

- Location of event, projected crowd size, traffic, prior history, personnel available, alcohol sales, and other specifics.
  - Goal to reasonably ensure safety
  - Each event looked at separately
  - Event Organizers ultimately decide staffing by event model, i.e. street closures & alcohol sales

# Current SEU Rate vs Current Hourly Rate

## SEU Hourly Rate (“SEU rate”)

- **Police Officers:** **\$55.00**
- **Police Sergeant:** **\$63.25**
- **Police Lieutenant:** **\$72.75**

## Top Step Hourly Rate (“Hourly rate”)

- **Police Officers:** **\$61.30**
- **Police Sergeant:** **\$70.95**
- **Police Lieutenant:** **\$82.18**

# Staffing of Special Events

- Police Officers (\$55.00/ \$82.50)
- Community Service Officers (\$58.83)
- Parking Traffic Control Officers (\$40.01)

SJPD staffing costs were lower to other cities when similar size of event, attendance, traffic, type of event, and number of street closures were similar.

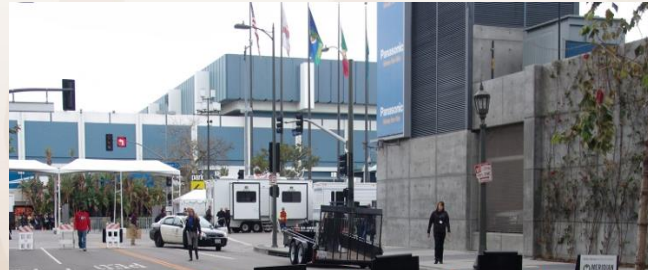
# Staffing Assignments

- SEU Sergeant sends out message to officers, reserves, PTCOs, & CSOs to fill assignments.
- Some will not work events at lower than hourly rates.
- A small group of CSOs & PTCOs volunteer for SEU jobs.
- Drawing from same pool of officers, competing SEU events make staffing difficult. If event does not fill at SEU rate, then the time-and-a-half rate is offered.
- SEU communicates fees through cost estimates, pre-event meetings, and other direct communications to organizers.



# Equipment and Staffing

Many cities are investing in permanent/temporary street closure equipment to protect citizens and reduce staffing.



# Portable Barrier Pilot Program

- Rent portable barriers for several events and analyze cost of renting/ purchasing barriers and cost of setup to close street for fiscal year.
- Compare to costs of SEU Officer street closure.

