

# Regional Transportation Activities Quarterly Report



Transportation and Environment Committee  
March 4, 2019

# Overview of Presentation

## 1. 2016 VTA Measure B

- a. Overview
- b. Highway Projects
- c. Bicycle and Pedestrian Program



## 2. Transportation Access & Mobility Plan

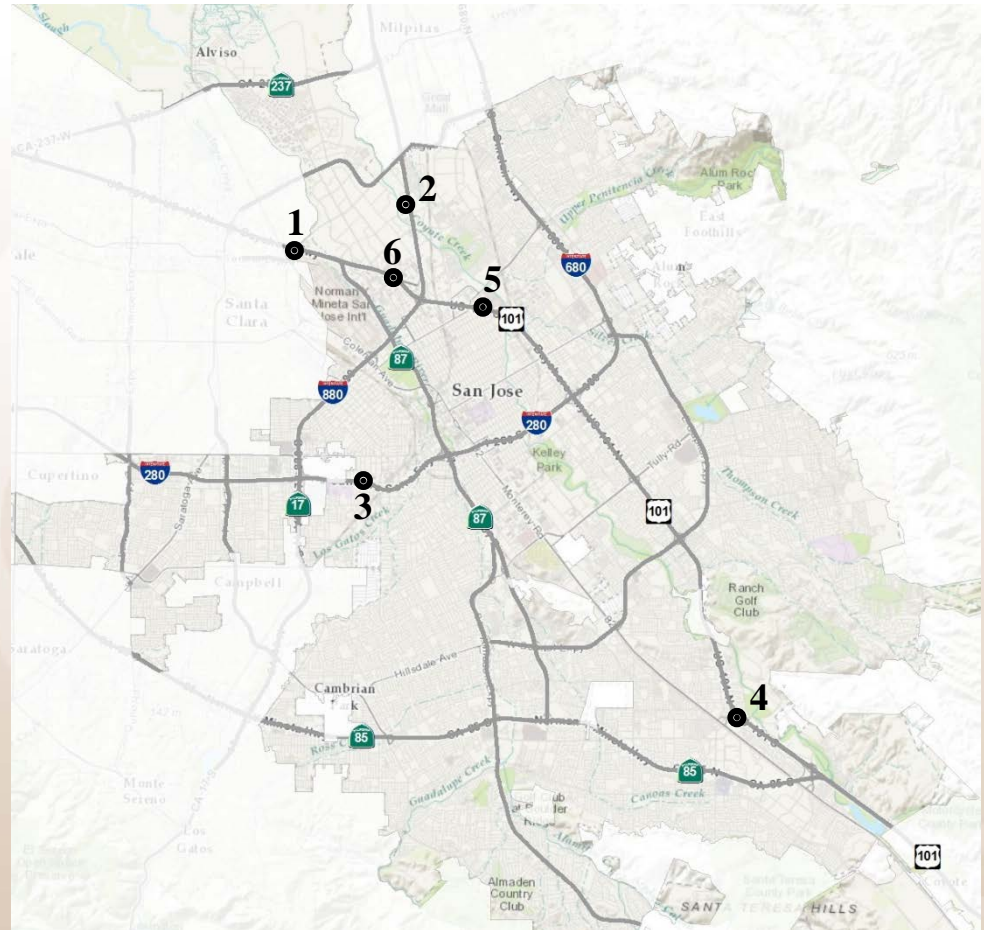
# 2016 VTA Measure B Overview

- Passed with 71% support
- 1/2-cent sales tax
- 30-year duration, starts collection 04/01/17
- Forecasted revenue: \$6.3 billion in 2017 dollars

Program Categories	2017 \$ Amount (Millions)
Local Streets & Roads	1,200
Bicycle & Pedestrian <ul style="list-style-type: none"><li>- 80% Capital Improvements</li><li>- 5% Capital Project Planning</li><li>- 15% Education</li></ul>	250
Transit Operations	500
BART Phase II	1,500
Caltrain Grade Separation	700
Caltrain Capacity Improvements	314
Highway Program	750
County Expressways	750
<u>SR 85 Corridor</u>	<u>350</u>
<b>Total</b>	<b>6,314</b>

# Measure B – Highway Projects

1. US 101/De la Cruz Interchange
2. Charcot Extension @ I-880
3. I-280 Winchester Interchange
4. US 101/Blossom Hill Interchange
5. US 101/Mabury & Oakland Interchange
6. US 101/Zanker Overcrossing





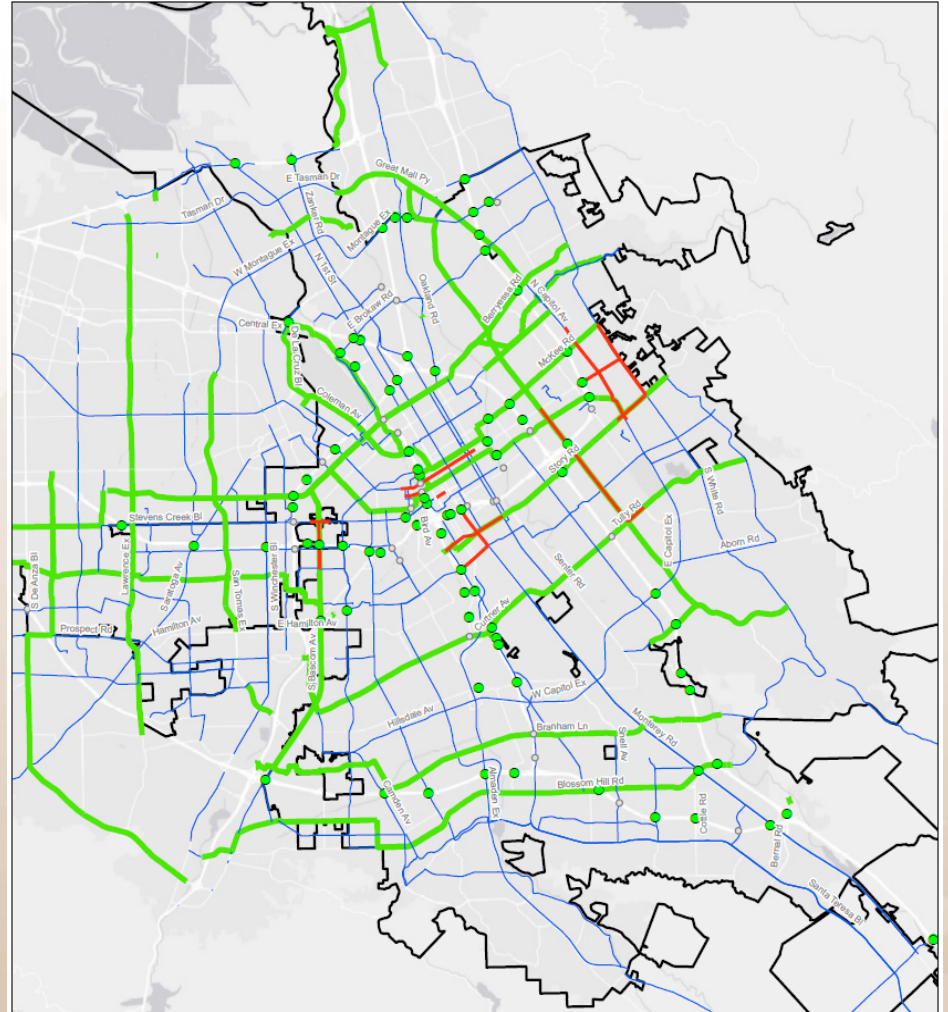
# Measure B – Bicycle & Pedestrian Program

## Capital Projects & Plans

- Candidate Projects (Listed)
- Countywide Bike Plan
- VTA Pedestrian Access to Transit Plan

## Education & Encouragement Funds

- Walk n' Roll
- Viva CalleSJ



# Access & Mobility Plan

- Citywide Transportation Strategies
- Iterative and Data-informed Decision Making



# Access & Mobility Plan

Phase 1 Directives

Phase 2 Strategies

Phase 3 Decision  
Support System

# Access & Mobility Plan

Phase 1 Directives

Phase 2 Strategies

Phase 3 Decision  
Support System

## Purpose

- Summarize City transportation policy
- Set draft Key Performance Indicators

## Work Product

- Draft Transportation Directives
- Draft KPIs



# Access & Mobility Plan

## Phase 1 Directives

### Purpose

- Summarize City transportation policy
- Set draft Key Performance Indicators

### Work Product

- Draft Transportation Directives
- Draft KPIs

## Phase 2 Strategies

### Purpose

- Develop implementation Strategies
- Public outreach

### Work Product

- Transportation Strategies

## Phase 3 Decision Support System

# Access & Mobility Plan

## Phase 1 Directives

### Purpose

- Summarize City transportation policy
- Set draft Key Performance Indicators

### Work Product

- Draft Transportation Directives
- Draft KPIs

## Phase 2 Strategies

### Purpose

- Develop implementation Strategies
- Public outreach

### Work Product

- Transportation Strategies

## Phase 3 Decision Support System

### Purpose

- Develop analytics tools

### Work Product

- Access & Mobility Decision Making support system

# Regional Transportation Activities Quarterly Report

## CONCLUSION Q & A

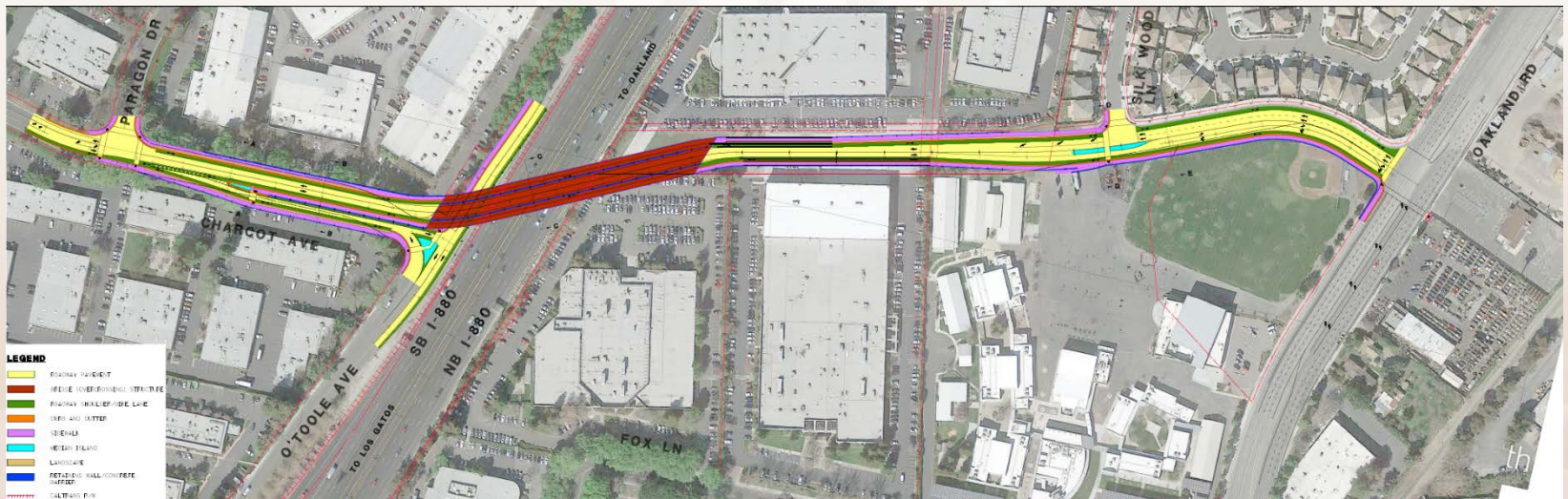
Transportation and Environment Committee  
March 4, 2019

# U.S. 101/De la Cruz Blvd Trimble Road Interchange





# Charcot Ave Extension Over I-880



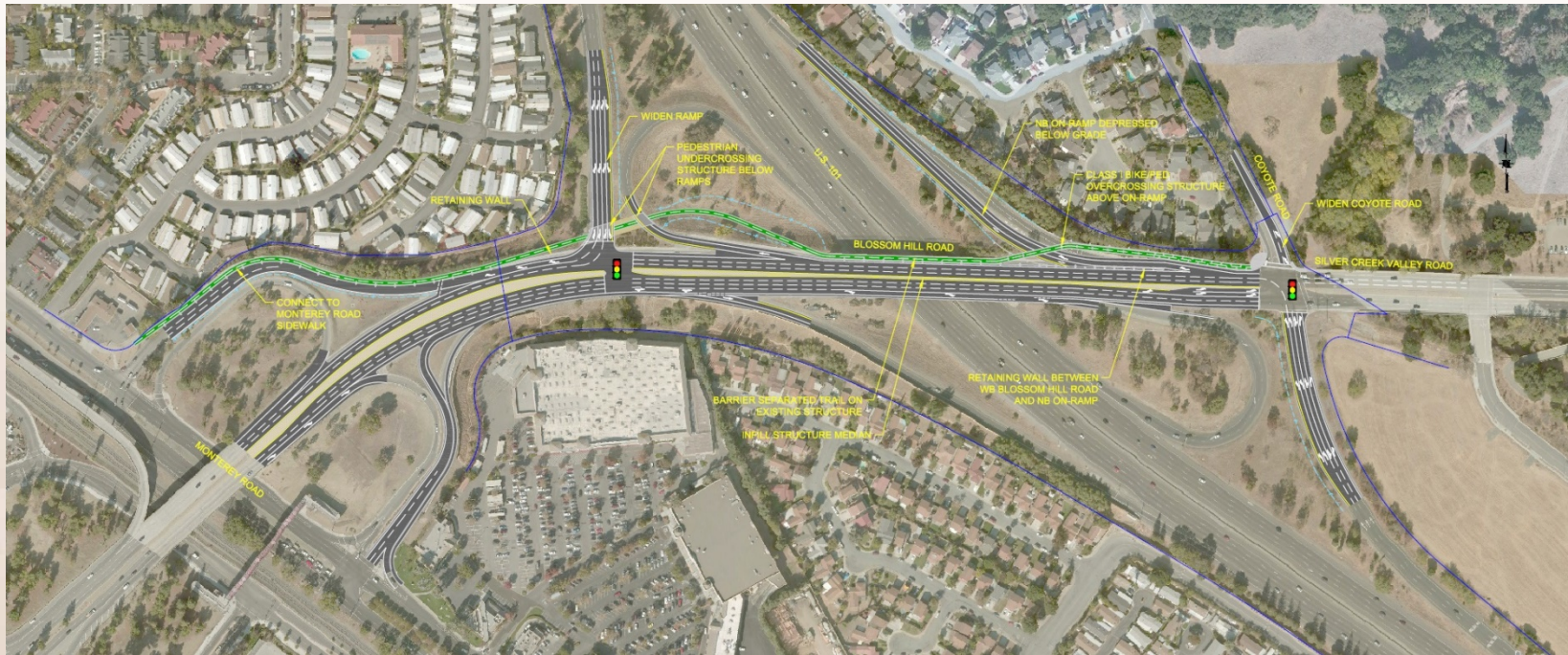


# I-280 Winchester Interchange



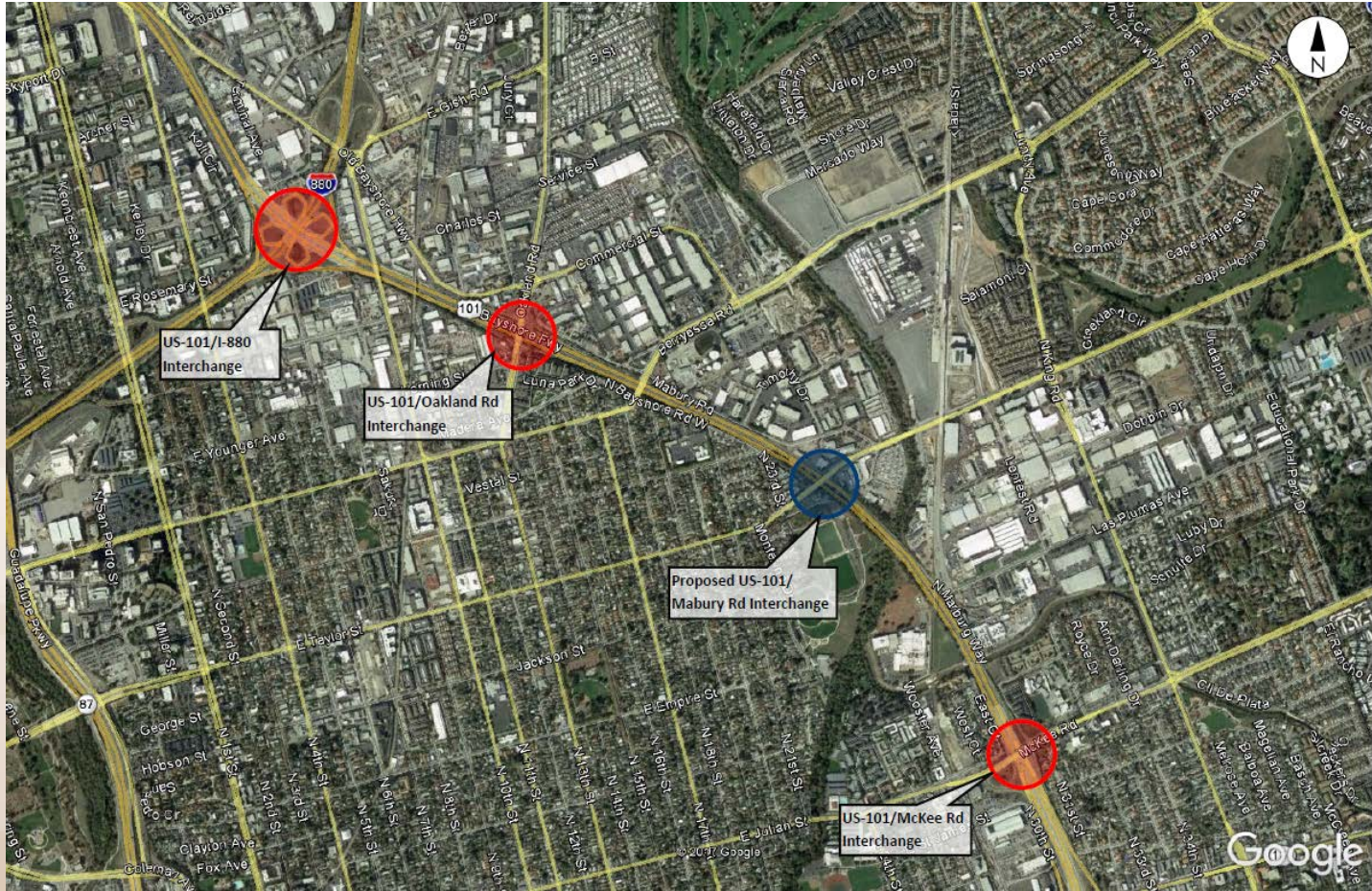


# US 101/Blossom Hill Interchange Improvements





# U.S. 101/Mabury & Old Oakland Interchange





# U.S. 101/Zanker Interchange

