

Memorandum

TO: Honorable Mayor &
City Council

FROM: Toni J. Taber, CMC
City Clerk

SUBJECT: The Public Record
December 7 – January 3

DATE: January 9, 2019

ITEMS FILED FOR THE PUBLIC RECORD

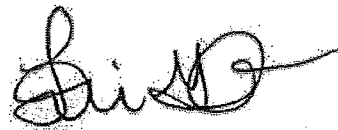
Letters from Boards, Commissions, and Committees

Letters from the Public

1. Letter from San Francisco BART, dated December 12, 2018, regarding Change in Existing BART Service| BART service to being at 5AM starting Feb. 11, 2019.
2. Letter from Mobilitie, LLC, dated November 1, 2018, regarding proposed above ground attachment to existing light pole.
3. Letter from CPUC, dated December 5, 2018, regarding Pacific Gas and Electric Company's request to increase rates for its customer data access application (A.18-11-015).
4. Letter from CPUC, dated December 21, 2018 regarding Pacific Gas and Electric Company's request to increase rates for its nuclear decommissioning application (A.18-12-008).
5. Letter from AT&T, dated December 20, 2018, regarding AT&T Mobility Site – 10135331 – CCL03832 / CCL09164R – CN3832 Sector A – 405 Evergreen Village Square.
6. Letter from AT&T, dated December 19, 2018, regarding AT&T Mobility Site – 10101827 – ccl03541 – cn3541 – 6148 Bollinger Road.
7. Letter from AT&T, dated December 14, 2018, regarding AT&T Mobility Site – 10132965 – CCL03770 – CN3770 – 1212 Fleming Avenue.

Rules and Open Government Committee
July 26, 2018
Subject: Public Record
Page 2

8. Letter from AT&T, dated December 19, 2018, regarding AT&T Mobility Site –
10095712 – CCL03321 – CN3321 Sorrento Cheese – 224 Rayos Del Sol Drive.

A handwritten signature in black ink, appearing to read "Toni J. Taber", with a stylized flourish extending to the right.

Toni J. Taber, CMC
City Clerk

TJT/tt

From: Nicole Franklin <>

Sent: Wednesday, December 12, 2018 9:35 AM

Subject: CHANGE IN EXISTING BART SERVICE | BART service to begin at 5AM starting Feb. 11, 2019

Dear Community Partners,

Starting on February 11, 2019, morning weekday BART trains will start one hour later for vital repairs and critical earthquake safety work. Alternative bus service will run between 3:45 am and 6:00 am.

Roughly 2,900 passengers enter the BART system during that first hour of service. Over 2,400 of those riders begin their trips in the East Bay with 64% disembarking at downtown San Francisco stations.

First hour BART riders surveyed during extensive outreach in the Spring of 2018 guided the development of a robust alternative bus service plan between the 4:00 am- 5:00 am window.

The alternative service plan creates 14 new express bus lines that will run from 3:45 am until 6:00 am. This includes 7 Transbay bus routes, 5 East Bay routes and 2 San Francisco/Peninsula routes. BART is partnering with 8 Bay Area bus agencies to operate this network. All fares between express bus stops will be the same as, or less than, current BART fares for the same trips. Train service will start at approximately 5 am. Check the schedule at www.bart.gov.

Attached, please find a flyer with bus routes and additional information.

If you have any questions, please do not hesitate to let us know.

Nicole Y. Franklin

Principal Government and Community Relations Representative
San Francisco Bay Area Rapid Transit District (BART)

Sign up for BART email/text alerts at: www.bart.gov/alerts

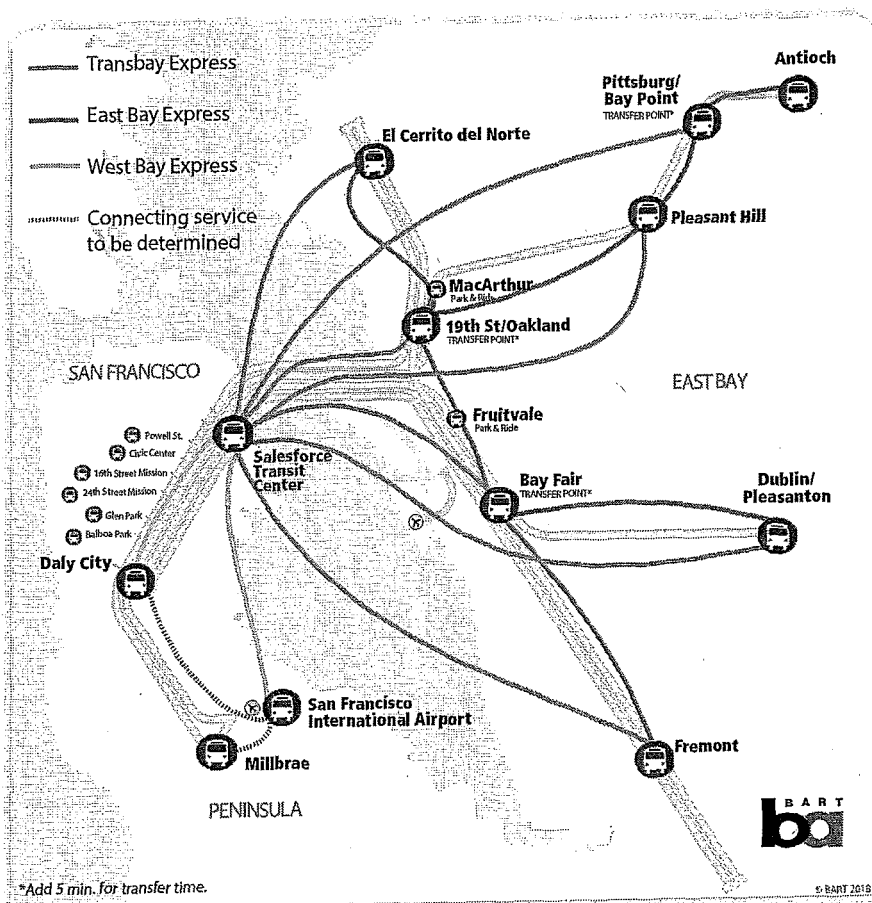
Early Bird EXPRESS

Starting on February 11, 2019, morning weekday BART trains will start one hour later for vital repairs and critical earthquake safety work. Alternative bus service will run between 3:45 am and 6:00 am.

Roughly 2,900 passengers enter the BART system during that first hour of service. Over 2,400 of those riders begin their trips in the East Bay with 64% disembarking at downtown San Francisco stations.

First hour BART riders surveyed during extensive outreach in the Spring of 2018 guided the development of a robust alternative bus service plan between the 4:00 am - 5:00 am window.

The alternative service plan creates 14 new express bus lines that will run from 3:45 am until 6:00 am. This includes 7 Transbay bus routes, 5 East Bay routes and 2 San Francisco/Peninsula routes. BART is partnering with 8 Bay Area bus agencies to operate this network. All fares between express bus stops will be the same as, or less than, current BART fares for the same trips. Train service will start at approximately 5 am. Check the schedule at www.bart.gov.



BART trains will start running an hour later each weekday at 5:00 am, beginning on February 11, 2019, so that a vital retrofit of the Transbay Tube and other necessary system upgrades can be performed.

To install the steel lining and make other systemwide upgrades, our crews will need extra time to be in the trackway overnight. Opening an hour later will speed up these projects by at least 25% and provide a minimum 12% cost savings.

Bus Service Schedule

Route	Operator	Bus Service
Antioch to Pittsburg/Bay Point	Tri Delta	15 min service beginning at 3:50 am
Pittsburg/Bay Point to STC*	AC Transit	15 min service beginning at 4:15 am
Pleasant Hill to STC	AC Transit	15 min service beginning at 4:25 am
MacArthur to 19th Street to STC	Multiple Operators	15 min service beginning at 4:30 am
Fremont to STC	AC Transit	30 min service beginning at 4:10 am
Dublin/Pleasanton STC	AC Transit	15 min service beginning at 4:10 am
Bay Fair to STC	AC Transit	15 min service beginning at 4:25 am
El Cerrito del Norte STC	Golden Gate Transit	15 min service beginning at 4:40 am
Pittsburg/Bay Point to Pleasanton Hill to 19th Street	County Connection	30 min service beginning at 4:10 am
Fremont to Bay Fair to 19th Street	AC Transit	30 min service beginning at 4:00 am
Dublin/Pleasanton to Bay Fair	Wheels	30 min service beginning at 3:45 am
El Cerrito del Norte to 19th Street	WestCAT	30 min service beginning at 4:30 am
STC to Daly City Daly City to STC	SFMTA	15 min service beginning at 4:45 am 15 min service beginning at 3:55 am
STC to SFO SFO to STC	SamTrans	15 min service beginning at 4:50 am 15 min service beginning at 4:15 am

*Salesforce Transit Center

Parking Options

Because BART stations won't open until 5 am, current parking payment methods will not be available for Early Bird Express riders. There will be two options to allow these riders to continue to pay for parking. The first is the Pay by Smart Phone App. BART will launch the new single sign-on app this fall with the parking payment feature expected to be available for early morning parkers only between 3:45 am and 5:15 am beginning February 2019.

For those who prefer to pay by cash, day passes will be available for advance purchase by mail or at the Lake Merritt and Embarcadero Clipper Card Office customer service centers.

If you need language assistance services, please call BART's Transit Information Center at (510) 465-2278.

如需語言援助服務，請致電 BART 公共交通資訊中心，電話號碼為 (510) 465-2278。

통역이 필요하시면, BART 수송 정보 센터 (510) 465-2278로 전화해 주십시오.

Si necesita servicios de asistencia de idioma, llame al centro de información de tránsito del BART al (510) 465-2278.

Nếu quý vị cần các dịch vụ trợ giúp ngôn ngữ, xin gọi cho Trung Tâm Thông Tin Chuyên Chở Công Cộng của BART tại số (510) 465-2278.

Kung kailangan mo ang tulong ng mga serbisyo ng wika, paki tawagan ang BART Transit Information Center na (510) 465-2278.



For project updates, visit www.bart.gov or sign up for text and email alerts at www.bart.gov/alerts



What Work is Being Done?

The Transbay Tube is made up of a giant concrete liner and an outer steel shell. To address concerns of flooding in the Tube, BART crews will install an inner steel lining designed to minimize leakage in the event of a very large earthquake on the Hayward or San Andreas faults. Workers will also upgrade the water pumping system to allow more time to safely evacuate riders and make necessary repairs if a large quake causes damage. Upgrades to other vital parts of the system will also be made to ensure safe and reliable service.



How Long will the Later Weekday Start Time Last?

We anticipate the Transbay Tube retrofit work will last approximately 3.5 years.



Mobilitie, LLC
2955 Red Hill Ave. Ste. 200
Costa Mesa, CA 92626
USA Tel: 714.415.4500
www.mobilitie.com

11/01/2018

Subject: PROPOSED ABOVE GROUND ATTACHMENT TO EXISTING LIGHT POLE

Located Near: 99 South 4th Street, San Jose, CA 95112
Site Coordinates (Latitude, Longitude): 37.33610266, -121.886359

To whom it may concern:

Mobilitie, LLC ("Mobilitie") proposes to install an above ground attachment to and existing 30'-32' steel light pole within the public rights-of-way on your street. The intent of this letter is to provide you with information regarding this proposal.

The proposed facility consists of the following: A) One Omni-Directional Antenna; B) One UE Relay Backhaul Antenna; C) One Remote Radio Head; D) One Disconnect Switch; and F) One PG&E Smart Meter, (please see the attached site plan and photo simulations for dimensions and other details relating to the project). The proposed facility will be located in the public right-of-way near 99 South 4th Street, San Jose, CA 95112. We have enclosed photo renderings and site plans of the proposed installation for your review.

The proposed facility is to be located in the public rights-of-way, not on private property. Mobilitie has nationwide CLEC status and statewide franchise rights under California Public Utilities Code Sections 7901 and 7901.1 which allow the placement of equipment within public rights-of-way. Local governments are limited in regulating the time, place, and manner of access and may not simply deny use of the public rights-of-way by a utility company.

You may direct any questions or concerns, prior to or during construction, to Robert J. Wilson at (312) 638-5363 or NorCalpermits@mobilitie.com.

Section 704 of Title 7 of the Federal Telecommunications Act of 1996 contains the following language: "No State or local government or instrumentality thereof may regulate the placement, construction, and modification of personal wireless service facilities on the basis of environmental effects of radio frequency emissions to the extent that such facilities comply with the Commission's regulations concerning such emissions." Any concerns regarding health risks for this proposed facility should be directed to the Federal Communications Commission – Office of Engineering and Technology – 445 12th Street S.W. - Washington DC 20554 – (202) 418-2464 – 1- 888-CALL FCC, or www.fcc.gov/oet/rfsafety.

Sincerely,

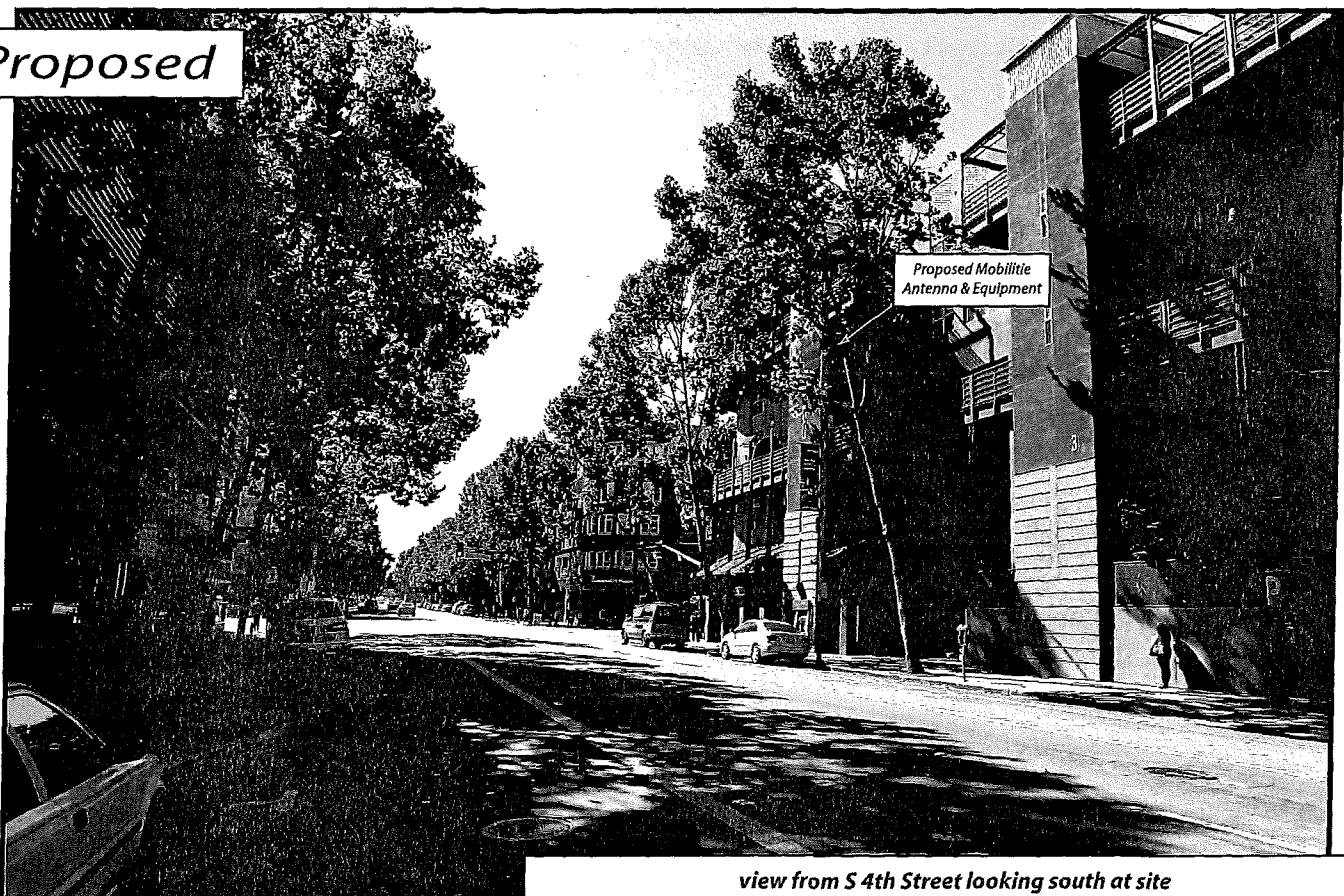
Robert J. Wilson

Attachments: Site Plan, Photo simulations
CC: Residents, Businesses, and/or Property
Owners adjacent to and within 300 ft. of facility
City of San Jose, Utilities Section

Existing



Proposed



view from S 4th Street looking south at site

AdvanceSim 
Photo Simulation Solutions
Contact (925) 202-8507

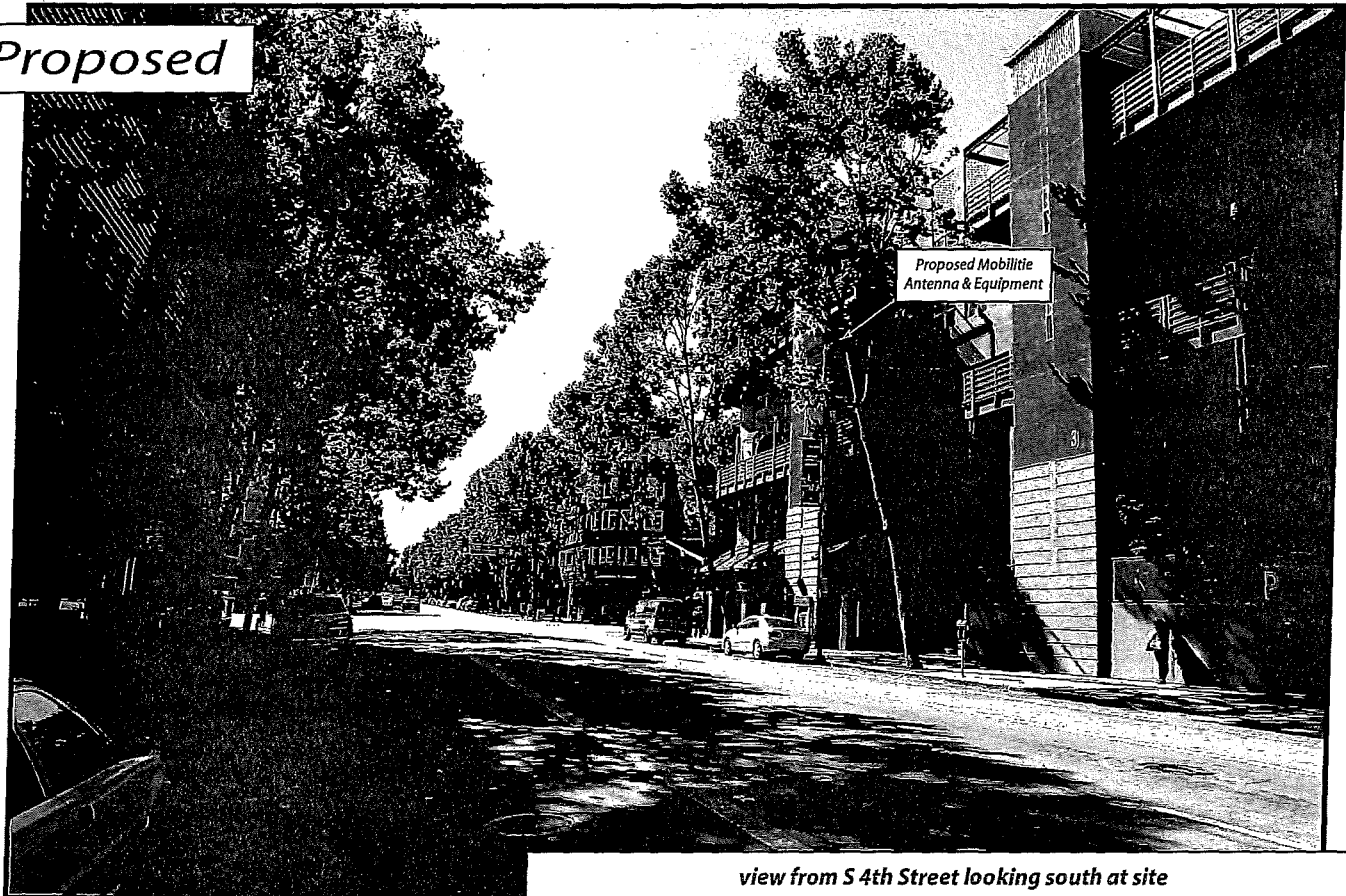
mobilitie
intelligent infrastructure

9CAB009005 / SF90XSC59A
S 4th & East San Fernando Street, San Jose, CA
Photosims Produced on 6-8-2017

Existing



Proposed



view from S 4th Street looking south at site

view from S 4th Street looking southwest at site

mobilitie
Intelligent Infrastructure

9CAB009005 / SF90XSC59A
S 4th & East San Fernando Street, San Jose, CA
Photosims Produced on 6-8-2017

Proposed

Existing

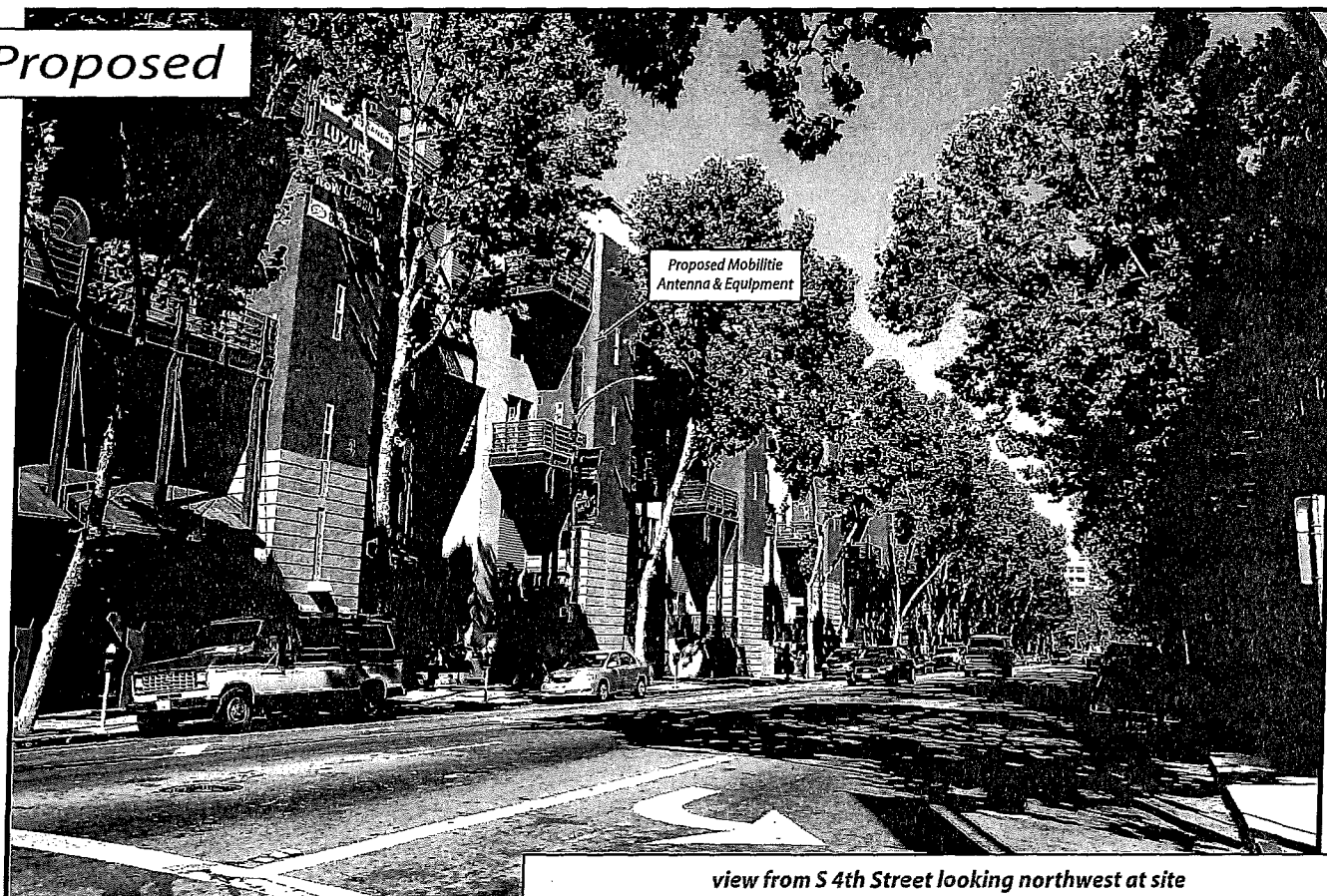


AdvanceSim 
Photo Simulation Solutions
Contact / 0251 707.8507

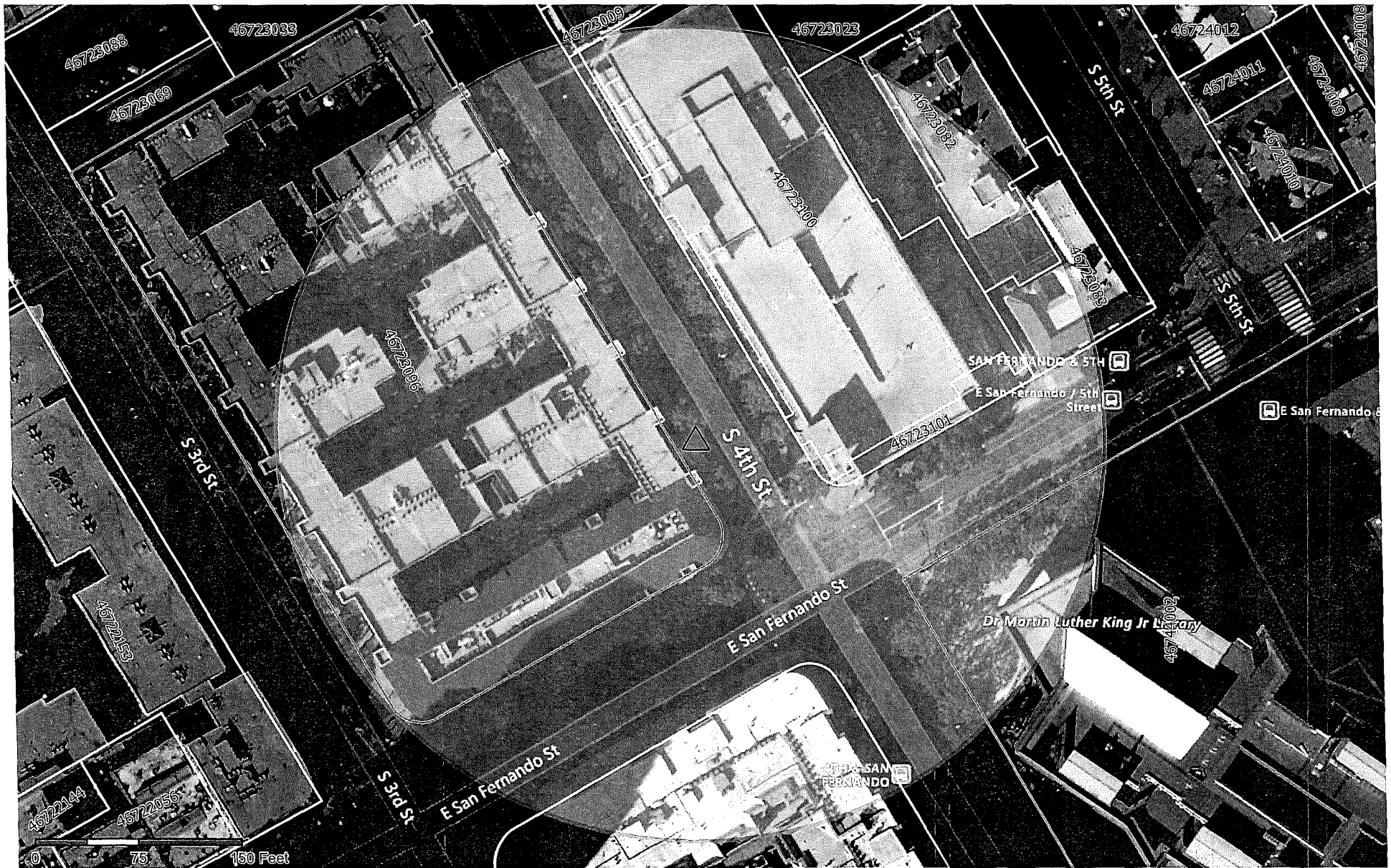
Existing



Proposed




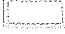
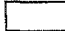
view from S 4th Street looking northwest at site



SF90XSC59A

Parcel APN: 46723096

This document is proprietary and confidential; in some cases, the potential sites shown on this map are pre-engineering locations that have not been vetted for network engineering, construction, and utility resource access. Candidate location as of date created.

-  Small Cell Attachment
-  300 Foot Radius
-  Nearest Parcel

mobilitie[®]
intelligent infrastructure

MOBILITIE GIS | Dec. 03, 2018

December 5, 2018

TO: STATE, CITY AND LOCAL OFFICIALS

NOTICE OF PACIFIC GAS AND ELECTRIC COMPANY'S REQUEST TO INCREASE RATES FOR ITS CUSTOMER DATA ACCESS APPLICATION (A.18-11-015)

Summary

On November 26, 2018, Pacific Gas and Electric Company (PG&E) filed its Customer Data Access application with the California Public Utilities Commission (CPUC). This application is intended to make it easier and more secure for customers to share their electric energy data with third parties. Some of these third parties include demand response, energy efficiency and energy management providers. To accomplish this goal, the application is requesting \$16.62 million for technology enhancements to streamline the existing online platform and improve access to customers' usage data.

Background

In 2015, PG&E launched a solution for sharing energy data. Since then, the energy industry has been evolving to meet the changing needs of customers and California's electric grid. In addition, third party providers have emerged in response to California's policies and to developments in the state's energy environment. In order for third parties to provide their services for PG&E's customers, accurate and timely data about customers' energy use and other relevant information is required. In compliance with customer privacy laws, customers need a secure way to authorize release of their energy data. As the industry continues to innovate, the proposals in this application will help preserve customer privacy while making it easier for customers to share their data.

How will PG&E's Application affect me?

Many customers receive bundled electric service from PG&E, meaning they receive electric generation, transmission and distribution services. Based on rates currently in effect, the bill for a typical residential, bundled nonCARE customer using 500 kWh per month would increase from \$113.64 to \$113.72, or 0.1 percent.

Actual impacts will vary depending on energy usage.

How will PG&E's Application affect customers who buy electricity from a third party?

Direct Access and Community Choice Aggregation customers only receive electric transmission and distribution services from PG&E. On average, these customers will see an increase of 0.1 percent.

Departing Load customers do not receive electric generation, transmission or distribution services from PG&E. However, they are required to pay certain charges as required by law or CPUC decision. These customers will not be impacted by this application.

How do I find out more about PG&E's proposals?

If you have questions about PG&E's filing, please contact PG&E at 1-800-743-5000. For TTY call 1-800-652-4712. Para más detalles llame al 1-800-660-6789 • 詳情請致電 1-800-893-9555. If you would like a copy of PG&E's filing and exhibits, please write to PG&E at the address below:

Pacific Gas and Electric Company
Customer Data Access Application (A.18-11-015)
P.O. Box 7442
San Francisco, CA 94120

A copy of PG&E's filing and exhibits is also available for review at the CPUC's Central Files office by appointment only. For more information, contact aljcentralfilesid@cpuc.ca.gov or 1-415-703-2045. PG&E's proposal (without exhibits) is available on the CPUC's website at www.cpuc.ca.gov.

CPUC process

This application will be assigned to an Administrative Law Judge (Judge) who will determine how to receive evidence and other related documents necessary for the CPUC to establish a record upon which to base its decision. Evidentiary hearings may be held where parties will present their testimony and may be subject to cross-examination by other parties. These evidentiary hearings are open to the public, but only those who are formal parties in the case can participate.

After considering all proposals and evidence presented during the hearings, the assigned Judge will issue a proposed decision which may adopt PG&E's proposal, modify it or deny it. Any of the five CPUC Commissioners may sponsor an alternate decision. The proposed decision, and any alternate decisions, will be discussed and voted upon at a scheduled CPUC Voting Meeting.

The California Public Advocates Office (CalPA) may review this application. CalPA is the independent consumer advocate within the CPUC with a legislative mandate to represent investor-owned utility customers to obtain the lowest possible rate for service consistent with reliable and safe service levels. CalPA has a multidisciplinary staff with expertise in economics, finance, accounting and engineering. For more information about CalPA, please call **1-415-703-1584**, email **PublicAdvocatesOffice@cpuc.ca.gov** or visit CalPA's website at **www.publicadvocates.cpuc.ca.gov**.

Stay informed

If you would like to follow this proceeding, or any other issue before the CPUC, you may use the CPUC's free subscription service. Sign up at **<http://subscribecpuc.cpuc.ca.gov/>**. If you would like to learn how you can participate in the proceeding, have informal comments about the application or have questions about the CPUC processes, you may access the CPUC's Public Advisor Office (PAO) webpage at **<http://consumers.cpuc.ca.gov/pao/>**.

You may also contact the PAO as follows:

Email: **public.advisor@cpuc.ca.gov**

Mail: CPUC

Public Advisor's Office

505 Van Ness Avenue

San Francisco, CA 94102

Call: **1-866-849-8390** (toll-free) or **1-415-703-2074**

TTY: **1-866-836-7825** (toll-free) or **1-415-703-5282**

If you are contacting the CPUC, please include the application number (Customer Data Access Application; A.18-11-015). All comments will be circulated to the Commissioners, the assigned Judge and appropriate CPUC staff and will become public record.

December 21, 2018

TO: STATE, CITY AND LOCAL OFFICIALS

NOTICE OF PACIFIC GAS AND ELECTRIC COMPANY'S REQUEST TO INCREASE RATES FOR ITS NUCLEAR DECOMMISSIONING APPLICATION (A.18-12-008)

Summary

On December 13, 2018, Pacific Gas and Electric Company (PG&E) filed its 2018 Nuclear Decommissioning Cost Triennial Proceeding application with the California Public Utilities Commission (CPUC). In this application, PG&E presents the costs that are necessary to safely and responsibly decommission Diablo Canyon Power Plant and to complete decommissioning and remediation activities associated with Humboldt Bay Power Plant Unit 3. If this application is approved, it would increase electric rates beginning in 2020.

Background

Every three years, PG&E is required to file a Nuclear Decommissioning Cost Triennial Proceeding application with the CPUC. This current application includes updated decommissioning costs since the 2015 application was filed (A.16-03-006).

This application is consistent with the CPUC's decision to retire Diablo Canyon Power Plant in 2025 to meet California's evolving energy policies and increase the use of renewable energy and energy efficiency resources.

The application includes costs related to the following:

- Planning and preparation for decommissioning activities
- Obtaining necessary regulatory approvals and permits
- Demolition and disposal of existing site facilities
- Site restoration activities
- Managing spent nuclear fuel storage until disposal by the Department of Energy
- Maintaining necessary security operations

PG&E is seeking \$417 million for each of the years covered in this application, which are 2020, 2021 and 2022.

How will PG&E's application affect electric rates?

Many customers receive bundled electric service from PG&E, meaning they receive electric generation, transmission and distribution services. Based on rates currently in effect, the bill for a typical residential bundled nonCARE customer using 500 kWh per month would increase from \$113.64 to \$116.03, or 2.1 percent. Actual impacts will vary depending on energy usage.

Direct Access and Community Choice Aggregation customers only receive electric transmission and distribution services from PG&E. On average, these customers will see an increase of 4.2 percent.

Departing Load customers do not receive electric generation, transmission or distribution services from PG&E. However, they are required by law or CPUC decision to pay certain charges. On average, these customers will see an increase of 39.8 percent.

Detailed rate information is included in a bill insert being sent directly to customers in December 2018 and January 2019.

How do I find out more about PG&E's proposals?

If you have questions about PG&E's filing, please contact PG&E at **1-800-743-5000**. For TTY, call **1-800-652-4712**. Para más detalles llame al **1-800-660-6789** • 詳情請致電 **1-800-893-9555**. If you would like a copy of PG&E's filing and exhibits, please write to PG&E at the address below:

Pacific Gas and Electric Company
Nuclear Decommissioning Cost Triennial
Proceeding Application (A.18-12-008)
P.O. Box 7442
San Francisco, CA 94120

A copy of PG&E's filing and exhibits is also available for review at the CPUC's Central Files office by appointment only. For more information, contact aljcentralfilesid@cpuc.ca.gov or **1-415-703-2045**. PG&E's application (without exhibits) is available on the CPUC's website at www.cpuc.ca.gov.

CPUC process

This application will be assigned to an Administrative Law Judge (Judge) who will determine how to receive evidence and other related documents necessary for the CPUC to establish a record upon which to base its decision. Evidentiary hearings may be held where parties will present their testimony and may be subject to cross-examination by other parties. These evidentiary hearings are open to the public, but only those who are formal parties in the case can participate.

After considering all proposals and evidence presented during the hearings, the assigned Judge will issue a proposed decision which may adopt PG&E's proposal, modify it or deny it. Any of the five CPUC Commissioners may sponsor an alternate decision. The proposed decision, and any alternate decisions, will be discussed and voted upon at a scheduled CPUC Voting Meeting.

The Public Advocates Office (CalPA) at the CPUC may review this application. CalPA is the independent consumer advocate within the CPUC with a legislative mandate to represent investor-owned utility customers to obtain the lowest possible rate for service consistent with reliable and safe service levels. CalPA has a multidisciplinary staff with expertise in economics, finance, accounting and engineering. For more information about CalPA, please call **1-415-703-1584**, email PublicAdvocatesOffice@cpuc.ca.gov or visit CalPA's website at www.publicadvocates.cpuc.ca.gov.

Stay informed

If you would like to follow this proceeding, or any other issue before the CPUC, you may use the CPUC's free subscription service. Sign up at: <http://subscribe.puc.ca.gov/>. If you would like to learn how you can participate in the proceeding, have informal comments about the application or have questions about the CPUC processes, you may access the CPUC's Public Advisor's Office (PAO) webpage at <http://consumers.cpuc.ca.gov/pao/>.

You may also contact the PAO as follows:

Email: public.advisor@cpuc.ca.gov

Mail: CPUC

Public Advisor's Office

505 Van Ness Avenue

San Francisco, CA 94102

Call: 1-866-849-8390 (toll-free) or 1-415-703-2074

TTY: 1-866-836-7825 (toll-free) or 1-415-703-5282

If you are contacting the CPUC, please include the application number (Nuclear Decommissioning Cost Triennial Proceeding Application A.18-12-008). All comments will be made available for review by the Commissioners, the assigned Judge and appropriate CPUC staff and will become public record.



AT&T
2600 Camino Ramon
4W850L
San Ramon, CA 94583

12/20/2018

VIA EMAIL

Ms. Anna Hom
CONSUMER PROTECTION & SAFETY DIVISION
California Public Utilities Commission
505 Van Ness Avenue
San Francisco, CA 94102

**RE: AT&T Mobility Site - 10135331 – CCL03832 / CCL09164R – CN3832 Sector A –
4055 EVERGREEN VILLAGE SQUARE, SAN JOSE, California 95135**

This is to provide the Commission with notice to the provisions of General Order No. 159A of the Public Utilities Commission of the State of California ("CPUC") that:

(a) AT&T Mobility has obtained all site land use approval(s) for the modification of the project listed above described in Attachment A.

A copy of this notification letter is also being provided to the appropriate local governmental agency for its information. Should there be any questions regarding this project, or if you disagree with any information contained herein, please contact me at ellenmagnie@caldwellcompliance.com or 925-918-5182.

Sincerely,

Attachment

cc: City Planning Director
City Clerk
City Manager

City of San Jose
200 E Santa Clara St, San Jose, California 95113



ATTACHMENT A

- 1-9 Project Location:** Modification
- Site Identification Number: CCL03832 / CCL09164R
- Project Number: 3701A0BN77
- Site Name: CN3832 Sector A
- Site Address: 4055 EVERGREEN VILLAGE SQUARE, SAN JOSE,
California 95135
- County: SANTA CLARA
- Assessor's Parcel Number: 659-56-003
- Latitude: 37-18-50.3
- Longitude: 121-46-22.4
- 10-14 Project Description:**
- Number of Antennae to be installed: 9 antennas total approved at
43 in height
- Tower Design: BUILDING
- Tower Appearance: BUILDING
- Tower Height:
- A) Structure Height 49
- B) Top of antenna Height 43
- Building Size(s): N/A
- 15 Business addresses of all Governmental Agencies (from permit)**
- City of San Jose
200 E Santa Clara St, San Jose, California 95113
- 16 Land Use Approval:** R/R (9) antennas. Install (15) (N) all behind (E) stealth concealment, and replace (E) power plant
- 17 If Land Use approval was *not* required:** N/A



PUBLIC RECORD 6

AT&T
2600 Camino Ramon
4W850L
San Ramon, CA 94583

12/19/2018

VIA EMAIL

Ms. Anna Hom
CONSUMER PROTECTION & SAFETY DIVISION
California Public Utilities Commission
505 Van Ness Avenue
San Francisco, CA 94102

**RE: AT&T Mobility Site - 10101827 – CCL03541 – CN3541 – 6148 BOLLINGER ROAD,
SAN JOSE, California 95129**

This is to provide the Commission with notice to the provisions of General Order No. 159A of the Public Utilities Commission of the State of California ("CPUC") that:

(a) AT&T Mobility has obtained all site land use approval(s) for the modification of the project listed above described in Attachment A.

A copy of this notification letter is also being provided to the appropriate local governmental agency for its information. Should there be any questions regarding this project, or if you disagree with any information contained herein, please contact me at ellenmagnie@caldwellcompliance.com or 925-918-5182.

Sincerely,

Ellen Magnie

Attachment

cc: City Planning Director
City Clerk
City Manager

City of San Jose
200 E. Santa Clara Street, San Jose, California



ATTACHMENT A

- 1-9 Project Location:** Modification
- Site Identification Number: CCL03541
- Project Number: 3701A0BAE7
- Site Name: CN3541
- Site Address: 6148 BOLLINGER ROAD, SAN JOSE, California
95129
- County: SANTA CLARA
- Assessor's Parcel Number: 007-07-042
- Latitude: 37-18-31.2
- Longitude: 122-00-43.7
- 10-14 Project Description:**
- Number of Antennae to be installed: 9 antennas total approved at
44 in height
- Tower Design: BUILDING
- Tower Appearance: BUILDING
- Tower Height:
- A) Structure Height 35
- B) Top of antenna Height 44
- Building Size(s): N/A
- 15 Business addresses of all Governmental Agencies (from permit)**
- City of San Jose
200 E. Santa Clara Street, San Jose, California
(408) 535-3555
- 16 Land Use Approval:** R/R (9) antennas install (3) (N) RRUS in equipment area, install (15) (N) RRU on interior of parapet below antennas
- 17 If Land Use approval was *not* required:** N/A





AT&T
2600 Camino Ramon
4W850L
San Ramon, CA 94583

12/14/2018

VIA EMAIL

Ms. Anna Hom
CONSUMER PROTECTION & SAFETY DIVISION
California Public Utilities Commission
505 Van Ness Avenue
San Francisco, CA 94102

**RE: AT&T Mobility Site - 10132965 – CCL03770 – CN3770 – 1212 FLEMING AVENUE
CS1, SAN JOSE, California 95127**

This is to provide the Commission with notice to the provisions of General Order No. 159A of the Public Utilities Commission of the State of California ("CPUC") that:

(a) AT&T Mobility has obtained all site land use approval(s) for the modification of the project listed above described in Attachment A.

A copy of this notification letter is also being provided to the appropriate local governmental agency for its information. Should there be any questions regarding this project, or if you disagree with any information contained herein, please contact me at ellenmagnie@caldwellcompliance.com or 925-918-5182.

Sincerely,

Attachment

cc: City Planning Director
City Clerk
City Manager

City of San Jose
200 E. Santa Clara St, San Jose, California 95113



ATTACHMENT A

1-9 Project Location: Modification
Site Identification Number: CCL03770
Project Number: 3701A0E93H
Site Name: CN3770
Site Address: 1212 FLEMING AVENUE CS1, SAN JOSE, California
95127
County: SANTA CLARA
Assessor's Parcel Number: 612-29-005
Latitude: 37-22-02.0
Longitude: 121-48-04.5

10-14 Project Description:
Number of Antennae to be installed: 2 antennas total approved at
59 in height
Tower Design: MONOPOLE
Tower Appearance: MONOPOLE
Tower Height:
A) Structure Height 60
B) Top of antenna Height 59
Building Size(s): N/A

15 Business addresses of all Governmental Agencies (from permit)

City of San Jose
200 E. Santa Clara St, San Jose, California 95113
(408) 535-3500

16 Land Use Approval: Antenna/cell AT&T

17 If Land Use approval was *not* required: N/A



AT&T
2600 Camino Ramon
4W850L
San Ramon, CA 94583

12/19/2018

VIA EMAIL

Ms. Anna Hom
CONSUMER PROTECTION & SAFETY DIVISION
California Public Utilities Commission
505 Van Ness Avenue
San Francisco, CA 94102

**RE: AT&T Mobility Site - 10095712 – CCL03321 – CN3321 SORRENTO CHEESE – 224
RAYOS DEL SOL DRIVE, SAN JOSE, California 95116**

This is to provide the Commission with notice to the provisions of General Order No. 159A of the Public Utilities Commission of the State of California ("CPUC") that:

(a) AT&T Mobility has obtained all site land use approval(s) for the modification of the project listed above described in Attachment A.

A copy of this notification letter is also being provided to the appropriate local governmental agency for its information. Should there be any questions regarding this project, or if you disagree with any information contained herein, please contact me at ellenmagnie@caldwellcompliance.com or 925-918-5182.

Sincerely,

Attachment

cc: City Planning Director
City Clerk
City Manager

City of San Jose
200 East Santa Clara Street, San Jose, California 95113



ATTACHMENT A

1-9 Project Location: Modification
Site Identification Number: CCL03321
Project Number: 3701A0E8FC
Site Name: CN3321 SORRENTO CHEESE
Site Address: 224 RAYOS DEL SOL DRIVE, SAN JOSE, California
95116
County: SANTA CLARA
Assessor's Parcel Number: 472-43-082
Latitude: 37-20-44.8
Longitude: 121-51-32.0

10-14 Project Description:

Number of Antennae to be installed: 3 antennas total approved at
64 in height
Tower Design: MONOPOLE
Tower Appearance: MONOPOLE

Tower Height:

A) Structure Height 65
B) Top of antenna Height 64
Building Size(s): N/A

15 Business addresses of all Governmental Agencies (from permit)

City of San Jose
200 East Santa Clara Street, San Jose, California 95113
(408) 535-3500

16 Land Use Approval: MODIFICATION OF AN EXISTING CELL SITE 1) R&R (3) ANTENNAS 2) INSTALL (3) RRUS-4478 B5 ON NEW H-FRAME IN EQUIPMENT AREA 3) INSTALL (3) RRUS E2 AND INSTALL (3) RRUS 448 B14 ON NEW H-FRAME IN EQUIPMENT AREA 4) INSTALL (6) DIPLEXERS ON (E) H-FRAME AT BASE OF (E) RADOME 5) INSTALL (1) DC12 SURGE SUPPRESSOR AT (E) RADOME BASE 6) INSTALL (1) EMERSON DCPD CABINET WITH (3) -48V STRINGS OF MARATHON M12V 180 FT BATTERIES 7) INSTALL (1) EMERSON BATTERY CABINET WITH (2) NEW -48V STRINGS OF MARATHON M12V 180FT BATTERIES 8) INSTALL(1) NEW PURCELL CABINET STACKED ON (E)



P8URCELL CABINET IN EQUIPMENT AREA 9) INSTALL (1) NEW 5216 AND (1) NEW XMU WITHIN (E) PURCELL CABINET 10) RELOCATE (1) (E) DC12 SURGE SUPPRESSOR AND INSTALL (1) NEW DC12 SURGE SUPPRESSOR IN EQUIPEMENT AREA 11) INSTALL (6) NEW 7/8" COAX CABLES FROM BASE OF POLE UP TO ANTENNAS 12) REMOVE (2) CABINET BASE AND RBA72 CABINET IN EQUIPMENT AREA 13) INSTALL (2) NEW POWER TRUNK CABLES AND (1) PROPOSED FIBER TRUNK CABLE FROM EQUIPMENT AREA TO BASE OF POLE THROUGH (E) PVC CONDUITS

17 If Land Use approval was *not* required: N/A