

Update on City and District Efforts Regarding Creek Health and Safety Along Waterways



Joint City-District Meeting
December 12, 2018

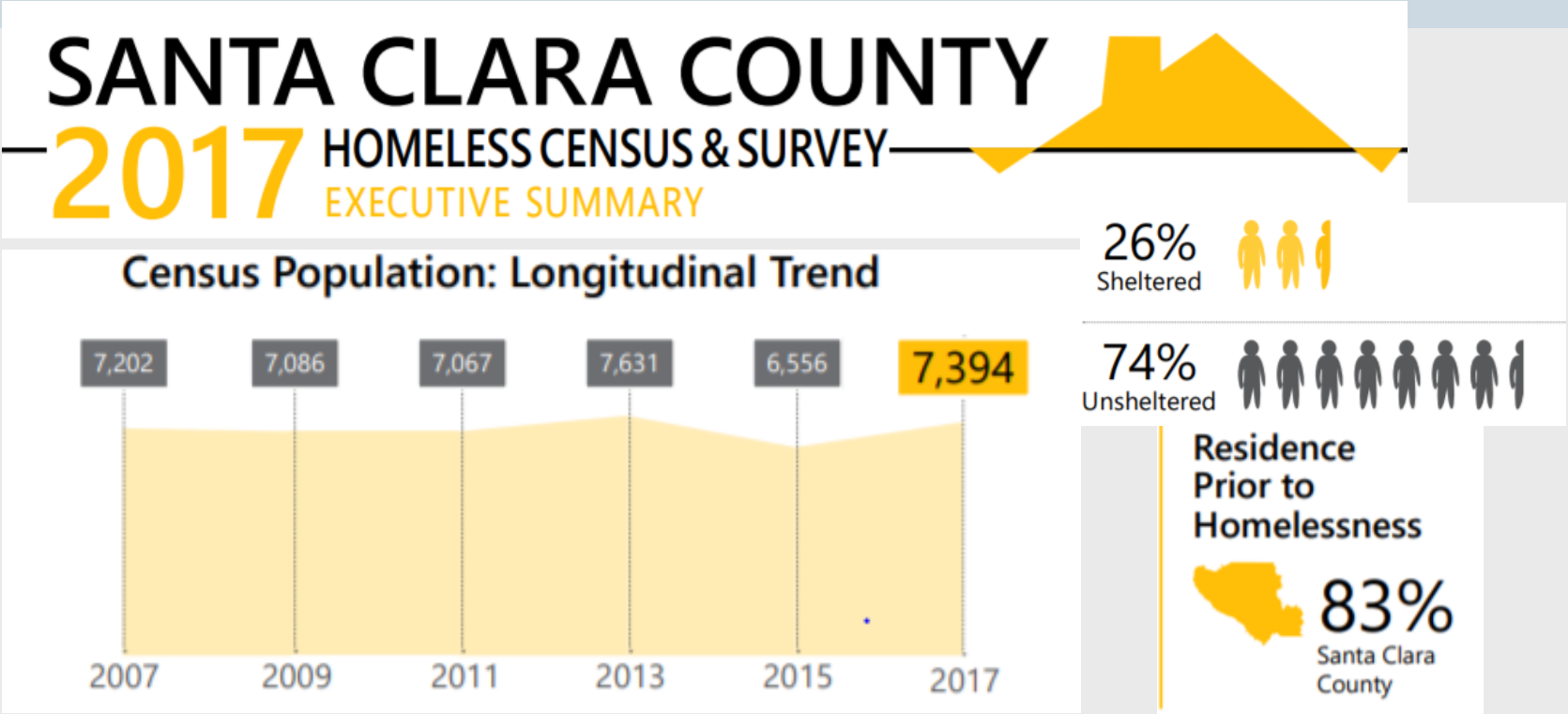


District and City efforts related to creeks:

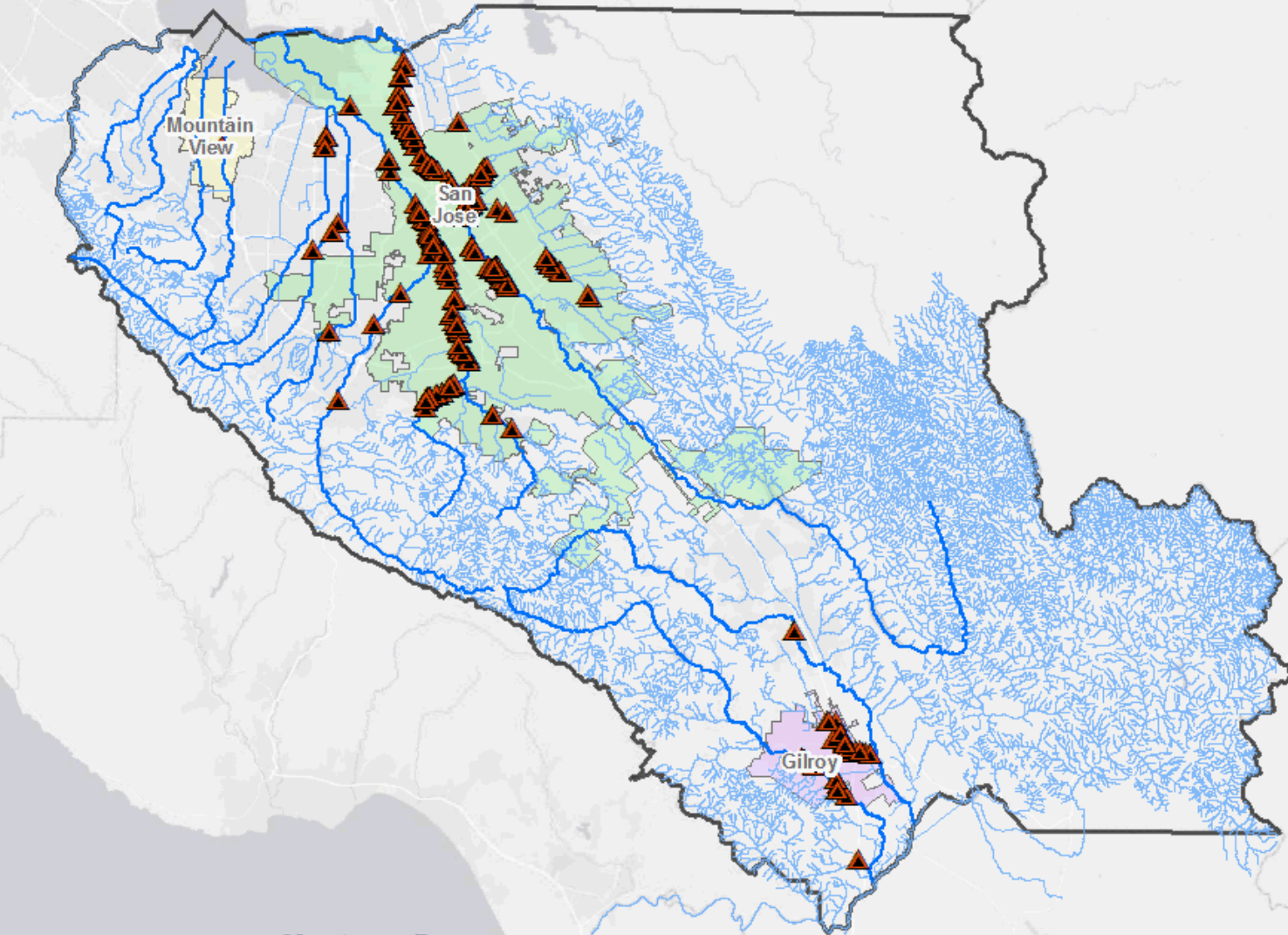


The District and the City share a commitment to improving the health and safety of creeks.

Homelessness in Santa Clara County



San Francisco Bay



Monterey Bay

Creek Health: Wildlife and Habitat Impacts



Wildfire



Tree and limb removal



Poaching and
Barriers

Creek Health: Water Quality Impacts

► Trash, Debris, and Bio-waste



Creek Health: Bank Excavation



Municipal Regional Stormwater Permit

- ▶ The City and District are Stormwater Co-permittees
- ▶ City must achieve 70% below 2009 levels by July 1, 2017 and **80% below by July 1, 2019.**
- ▶ City achieved the 2017 goal
- ▶ **At 88.3% reduction as of July 1, 2018**
- ▶ The City receives a **15%** offset for the Direct Discharge Trash Control Plan: **for non-storm drain system sources**



DIRECT DISCHARGE TRASH CONTROL PROGRAM

Supplemental Submission

May 27, 2016

Submitted in accordance with provision Section C.10.e.ii of NPDES Permit No. CAS612008.

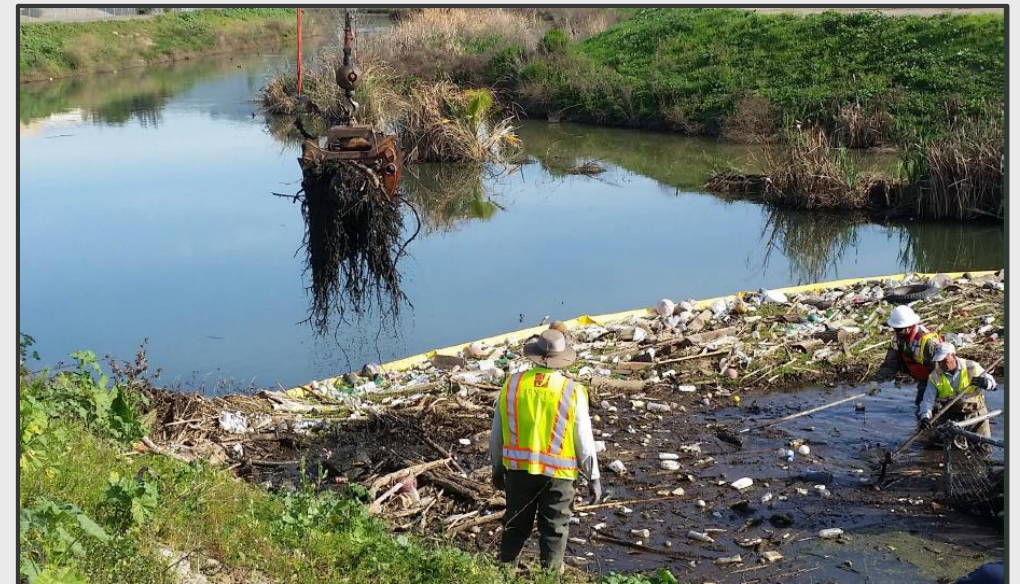
City Trash Reduction Efforts



District Trash Reduction Efforts



- ▶ Install and maintain 4 trash booms
- ▶ Clean 249 bridge piers 2x per year
- ▶ Monitor and clean 12 trash hot spots annually
- ▶ Respond to reports of trash in creeks
- ▶ Coordinate county-wide volunteer creek cleanups



Engaging the Community: Volunteers and Grants



Partnership on Encampment Cleanups

- ▶ The City and the District MOA that establishes a framework for cooperation on encampment cleanups
- ▶ In Fiscal Year 2017-18, the City and the District conducted 499 joint cleanups along creeks and removed 799 tons of trash.
- ▶ Both agencies partner to fund Downtown Streets Team



Encampment Cleanup Responsibilities

City Responsibilities	District Responsibilities
Coordinate homeless outreach and support services	Provide cleanup crews to conduct the cleanup
Execute encampment notification and posting.	Transport trash collected at cleanup to disposal site
Provide personnel for sorting personal property from trash	Provide cleanup supplies, including personal protective gear and portable sanitary facilities
Provide personnel for transportation and storage of personal property	Provide heavy equipment such as compactors, bobcats and other machinery
Provide security during cleanup	Ensure permit coverage for cleanups
Provide waste disposal authorizations	

Safety and Enforcement

- Unsafe conditions for staff, volunteers, and encampment residents



Weapons



Aggressive Dogs



Disease



City Efforts to Address Homelessness

Housing Based Solutions

- Rental subsidies
- Permanent affordable housing
- Homeless Prevention Program

Interim Housing

- Temporary sheltering solutions with bridge to permanent housing

Crisis Response Interventions

- Outreach, engagement, and case management
- Emergency shelters
- Mobile laundry and showers