

EFFORTS TO REDUCE AND PREVENT HOMELESSNESS IN SANTA CLARA COUNTY

October 23, 2018

Parkside Studios, Sunnyvale, CA

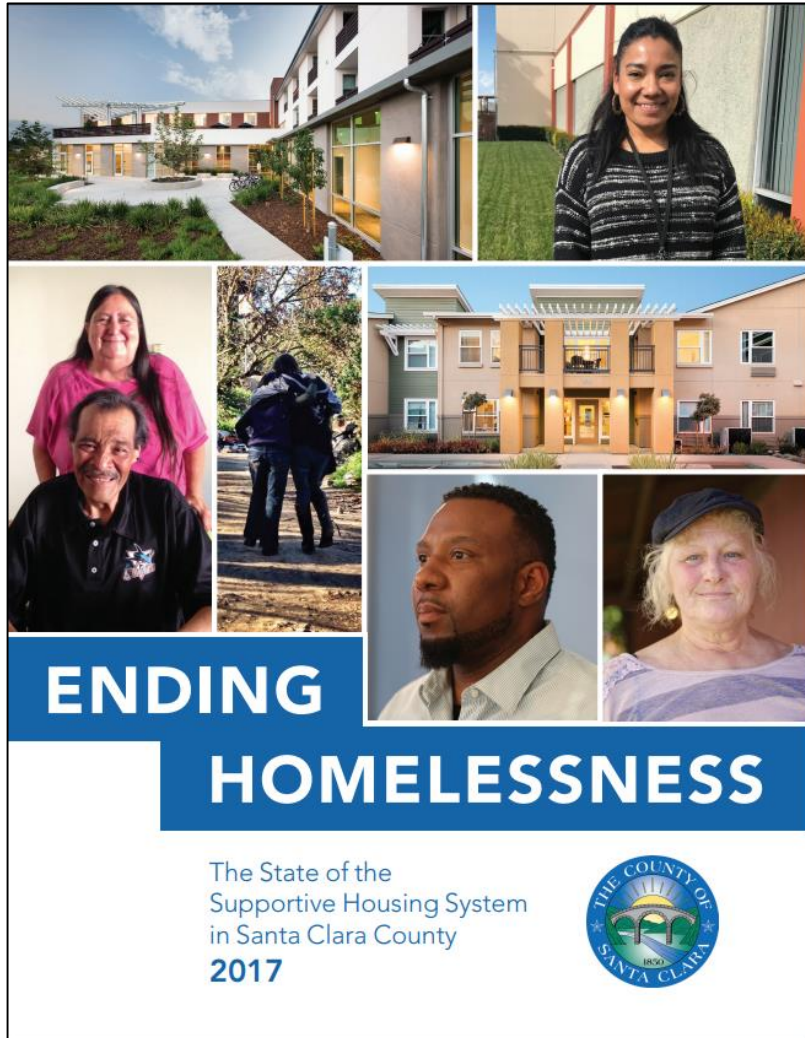
Charities Housing Development Corporation



An end to homelessness means that every community will have a systematic response in place that ensures homelessness is prevented whenever possible or is otherwise a rare, brief, and non-recurring experience.

Supportive Housing in Santa Clara County

3



- ❑ Destination: Home
- ❑ Housing 1000
- ❑ Office of Supportive Housing/City of San Jose Housing Department/Santa Clara Housing Authority
- ❑ 2015-2020 Community Plan to End Homelessness
- ❑ Housing Task Force, April to December 2015

Public-Private Partnerships with Results

4

Total Permanently Housed

TOTAL 5,154

2015  **1,212**

2016  **1,883**

2017  **2,059**

1,100 Veterans
Housed through
the All the Way
Home
Campaign

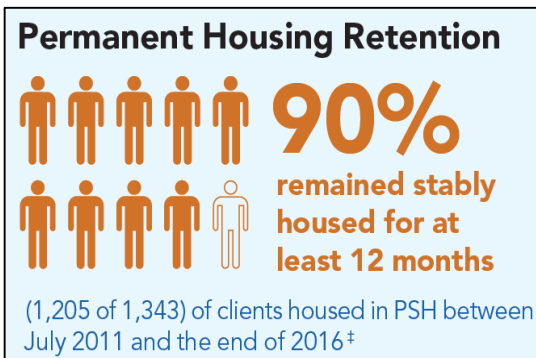
\$50M Funding
Commitment
from Cisco

Housing Based Solutions

5

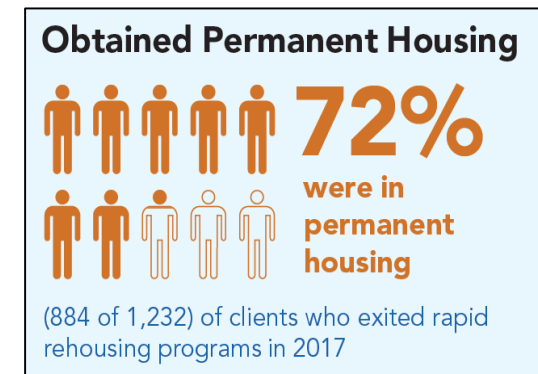
Permanent Supportive Housing (PSH)

- ❑ Service-enriched housing for homeless persons with disabilities
- ❑ No time limit for assistance
- ❑ January 1, 2015 through June 30, 2018, increased PSH capacity by 50%
- ❑ ~2,850 households



Rapid Rehousing (RRH)

- ❑ Assistance to working individuals and families who are homeless
- ❑ Assistance is up to two years
- ❑ January 1, 2015 through June 30, 2018, increased RRH capacity by 46%
- ❑ ~1,400 households annually



Homeless Prevention

6

Three-Year Pilot Program serving 480 households per year

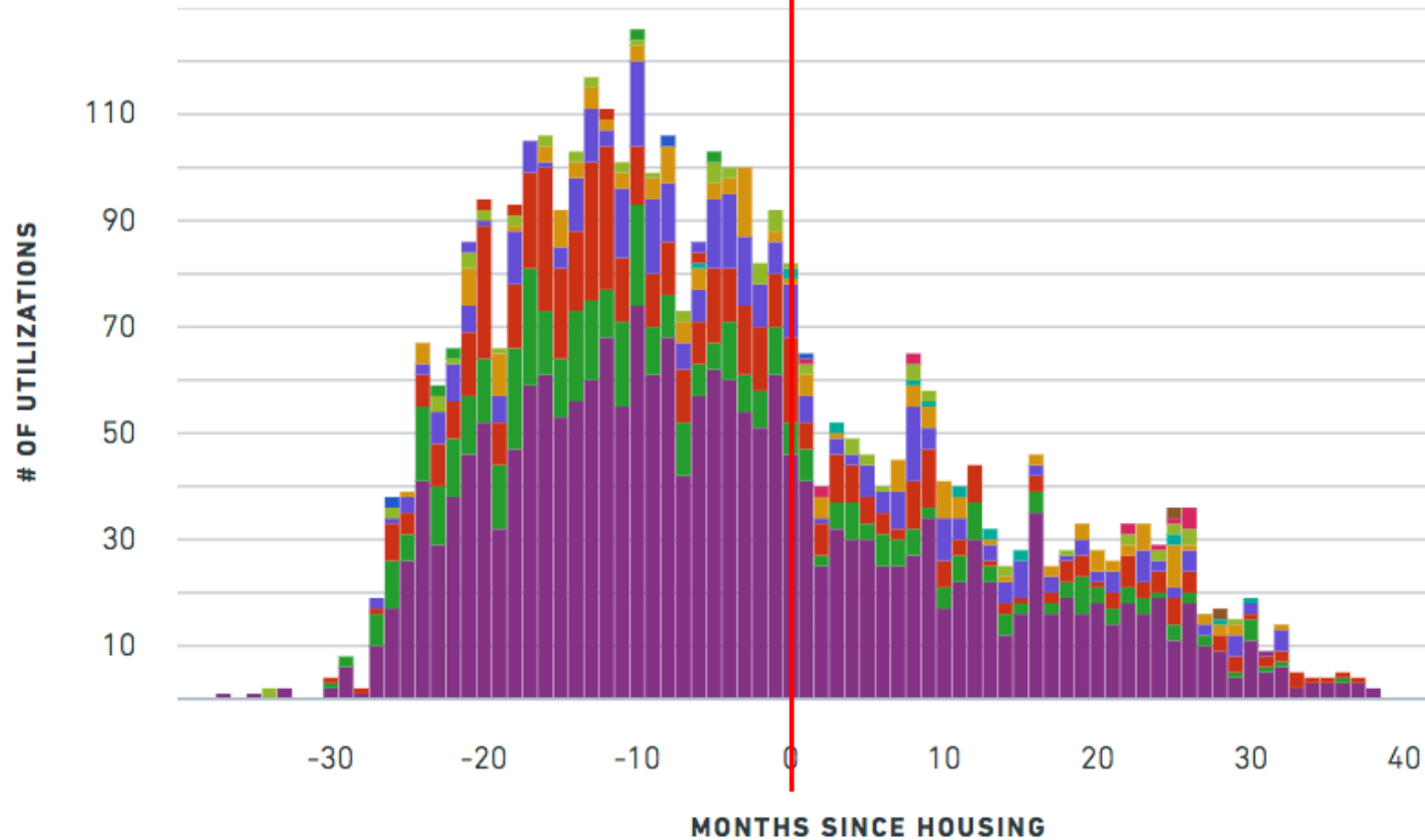
- ☐ Destination: Home
- ☐ Cities: San Jose, Mtn. View, Morgan Hill, Santa Clara
- ☐ Google, Packard Foundation, Sunlight Giving

Project Welcome Home after 36 months

7

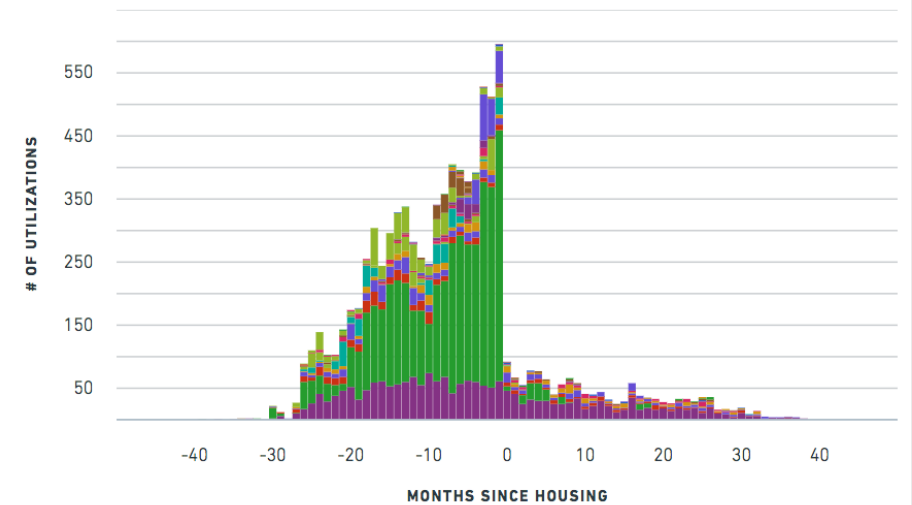
Use of jail, emergency and acute medical and mental health services

Services Pre/Post Housing



With Emergency Shelter Utilization

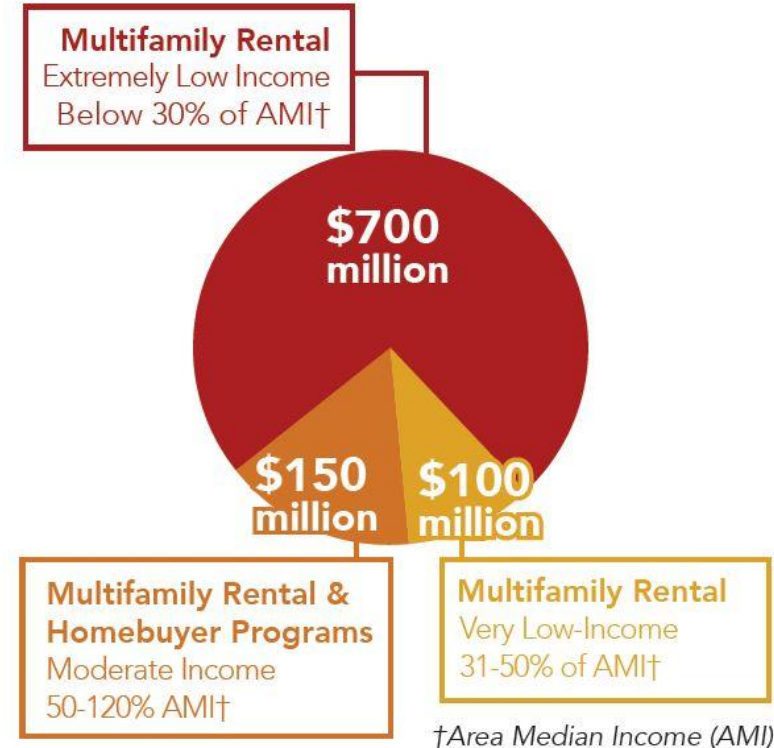
Services Pre/Post Housing



2016 Measure A Investments & Housing Development

8

Funding Allocations for Voter Approved 2016 Measure A Housing Bond Total of \$950 million



www.supportivehousingscc.org/housingbond

YEAR 1 IMPLEMENTATION

\$111,030,000

IN MULTI-FAMILY HOUSING
DEVELOPMENT APPROVED

6 CITIES

817 NEW
APARTMENTS

10 HOUSING
DEVELOPMENTS

\$25 MILLION

FIRST-TIME HOMEBUYER PROGRAM

*As of June 2018

2016 Measure A Housing Bond Goals & Production

9

- 120 developments July 1, 2017 to June 30, 2028

Goal of 4,800 PSH, RRH, ELI and VLI Units

	PSH	RRH	ELI	VLI	LI	Mgr.
Goal	1800	1600	800	600	0	0
Approved	489	0	91	134	93	10
Remaining Goal	1311	1600	709	466		

= 817 Units

2016 Measure A & County Funded Developments

10



The Crossings on Monterey, Morgan Hill

- 20 PSH Units
- \$5.8M Measure A funds
- Under Construction



The Veranda, Cupertino

- 6 PSH Units
- \$1M Measure A Funds
- Under Construction



Sango Court Apartments, Milpitas

- 40 PSH Units
- \$16M Measure A Funds
- Securing Financing



Page Street Apartments, San Jose

- 27 PSH Units
- \$14M
- Securing Financing and CUP for parking lifts



Corvin Apartments, Santa Clara

- 80 PSH Units
- \$29M Measure A Funds
- Securing Financing and final architectural review



Monterey Gateway, Gilroy

- 37 PSH Units
- 7.5\$M Measure A Funds
- Under Construction

2016 Measure A Developments with San Jose Funds

11



Leigh Avenue Sr. Apartments, San Jose

- 63 PSH Units
- \$13.5M Measure A Funds
- \$9.0M City Funds
- Construction Finance Closing



Villas on the Park, San Jose

- 83 PSH Units
- \$7.2 M Measure A Funds
- \$8.76M City Funds
- Under Construction



Quetzal Gardens, San Jose

- 24 PSH Units
- \$9.83M Measure A Funds
- \$9.94 M City Funds
- Securing Financing



North San Pedro, San Jose

- 109 PSH Units
- \$7.2M Measure A Funds
- \$2.4M City Funds
- Construction Finance Closing

Development Timeline for 2016-Measure A Projects

12



Supportive Housing Development Countywide

13

MidPen Housing, Onizuka
Crossing, Sunnyvale



- Since 2015 nearly 1,000 supportive housing units have been built, are under construction, or have been approved
- Four developments (182 PSH units) are in the outreach/ lease-up process
- Six developments (347 PSH units) will begin the outreach/ lease-up process in 2019

Core, Belovida, Santa Clara



Second Street Studios, San Jose

- 134 PSH Units
- \$18.4 M City Funds
- County will provide supportive services
- Under Construction

Moving on all Fronts – Increase Interim Housing by 19%

14

Cold Weather Shelter Program

- ☐ Arturo Ochoa Migrant Center
- ☐ Sunnyvale Shelter
- ☐ Mtn. View Shelter
- ☐ San Jose Overnight Warming Locations
- ☐ San Jose Temporary & Incidental Shelter Program

Year-Round Temporary Housing

- ☐ All shelter facilities at capacity
- ☐ Motel Conversions: Plaza Hotel/
Casa de Novo
- ☐ Safe Parking Pilot Programs

Moving on all Fronts – Upcoming Opportunities

15

- LGBTQ-Friendly Temporary Housing
- Temporary or interim housing using unconventional structures
 - Bridge Housing Communities
 - Hope Village
- Capital improvement grants
- Shelter & basic needs RFP
- Safe Parking San Jose City-wide Ordinance

Moving on all Fronts

16

HEAP Funding

- ❑ Santa Clara County HUD CoC: \$17,506,486
- ❑ City of San Jose: \$11,389,987

Housing Based Solutions

- ❑ Operating, capital for interim housing solutions
- ❑ Prevention and diversion from shelters

Crisis Response

- ❑ Operating and capital expenses for essential services

Affordable Housing for Other Vulnerable Populations

- ❑ Preserved Buena Vista Mobile Home Park
- ❑ \$40M for persons with intellectual and developmental disabilities
- ❑ Affordable Housing Impact Mitigation Fee & Inclusionary Housing Ordinance
- ❑ Measure V: Affordable Housing Bond

System of Care

- ❑ Coordinated Assessment System – 15,000 persons screened
- ❑ Increased HUD CoC funding to \$21.9M, a 72% (\$9M) increase from 2013
- ❑ Evaluation:
 - ❑ Homeless Cost Study
 - ❑ Project Welcome Home

Since the Housing Task Force

17

- Helped **5,100** homeless person (2015 through 2017)
- All the Way Home Campaign has ended homelessness for **1,100** veterans
- Approximately **1,000** supportive housing units built or underway; **182** units are currently being leased up
- County has implemented a **\$25M** First-Time Home Buyer Program
- Increased PSH capacity by 50% and RRH capacity by 46%
- Increased temporary housing capacity by 19% with more on the horizon
- Established a new homelessness prevention system serving 480 families each year