

2018 Annual Fleet Management Report

May 7, 2018
Transportation & Environment Committee

Fleet Management Division



Fleet Assets (2,750)



Fleet Assets (2,750)



Fleet Management Services



Service & Repair
21K WO's



Mobile Service
24/7



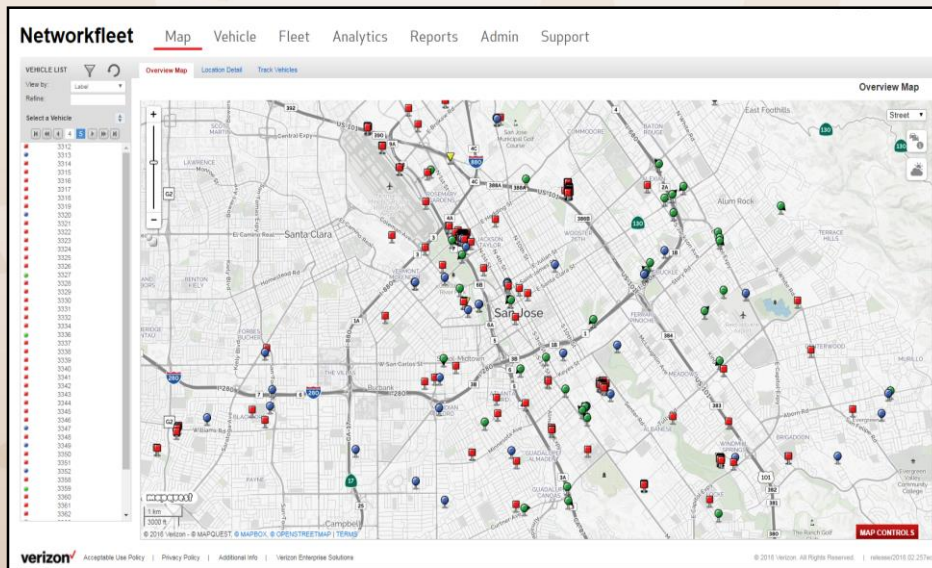
Fuel
1.4 Million Gallons



Acquisition & Disposal
170 New / 150 Retired

2017/18 Accomplishments

- PD Parking/Telematics
- Donated Vehicles
- ALT Fuel Fleet
- Apprentice Graduations



PATROL VEHICLE PARKING AUTOMATION



PD Parking Program - Updated: 4/26/2018, 4:12:05 PM

SWING SHIFT



SOUTHERN

ADAM		
Icon	Icon	P
1642	6A10	322
3388	61A1	289
3326	61A2	288
3242	61A3	290
3397	61A4	292
3248	61A5	214
1691	66A3	130

TOM		
Icon	Icon	P
3323	61T0	312
3263	61T1	201
3305	61T2	202
3310	61T3	203
3331	61T4	204
3385	61T5	205

X-RAY		
Icon	Icon	P
3234	6X10	315
3416	61X1	262
3304	61X2	263
3251	61X3	265
3413	61X4	264
3261	61X5	266
3253	66X1	267
3312	66X5	261

YELLOW		
Icon	Icon	P
3405	6Y10	308
3359	61Y1	268
3400	61Y2	249
3362	61Y3	248
3350	61Y4	250

FOOTHILL

CHARLES		
Icon	Icon	P
3300	6C10	316
3243	61C1	241
3351	61C2	404
3302	61C3	490
3325	61C4	491
3247	61C5	442
3273	61C6	441
1719	66C3	129

MARY		
Icon	Icon	P
1649	6M10	341
3309	61M1	209
3368	61M2	210
3256	61M3	211
3281	61M4	212
3322	61M5	213

PAUL		
Icon	Icon	P
3426	6P10	309
3286	61P1	238
3404	61P2	224
3328	61P3	226
3339	61P4	220
3254	61P5	223
3290	61P6	225
3402	66P1	216

WILLIAM		
Icon	Icon	P
3297	6W10	336
3412	61W1	257
3314	61W2	258
3270	61W3	259
3417	61W4	260

WESTERN

FRANK		
Icon	Icon	P
3419	6F10	338
3399	61F1	286
3262	61F2	414
3288	61F3	411
3269	61F4	415
3287	61F5	413
1714	66F5	403

LINCOLN		
Icon	Icon	P
3280	6L10	317
3267	61L1	243
3250	61L2	242
3332	61L3	405
3291	61L4	244
3283	61L5	208
3272	61L6	207
3292	66L2	252
3319	66L3	231
3244	66L4	412

NORA		
Icon	Icon	P
3376	6N10	307
3398	61N1/61N3	219
3390	61N2	215
3396	61N4	218
3317	61N5	217
3293	61N6	228

SAM		
Icon	Icon	P
3299	6S10	311
3301	61S1	235
3407	61S2	236
3324	61S3	237
3410	61S4	227

CENTRAL

EDWARD		
Icon	Icon	P
3425	6E10	337
3258	61E1	424
3387	61E2	423
3394	61E3	422
3306	61E4	425
1590	66E2	402
3285	66E3	287

KING		
Icon	Icon	P
3383	6K10	346
3315	61K1	406
3245	61K2	410
3237	61K4	409
3408	61K5/61K3	408
3329	61K6	407

ROBERT		
Icon	Icon	P
3384	6R10	310
3318	61R2	229
3345	61R3/62R3	233
3341	61R4	291
3409	61R5	230
3289	62R1	234

VICTOR		
Icon	Icon	P
3266	6V10	313
1773	61V1	256
3260	61V2	254
3257	61V3	255
3249	61V4	253

POOLS - AVAILABLE 15

Icon	T	P
1502	FLIR	427
1640	FLIR	426
1758	FLIR	456
1676	LPR	457
1646	POOL	560
1651	POOL	562
1667	POOL	547
1683	POOL	510
1711	POOL	557
1725	POOL	545
1735	POOL	565
1738	POOL	567
1765	POOL	549
1770	POOL	561
1775	POOL	167

Available 45
Not Available 14
Out in the Field 65

Vehicle ID
Beat Assignment

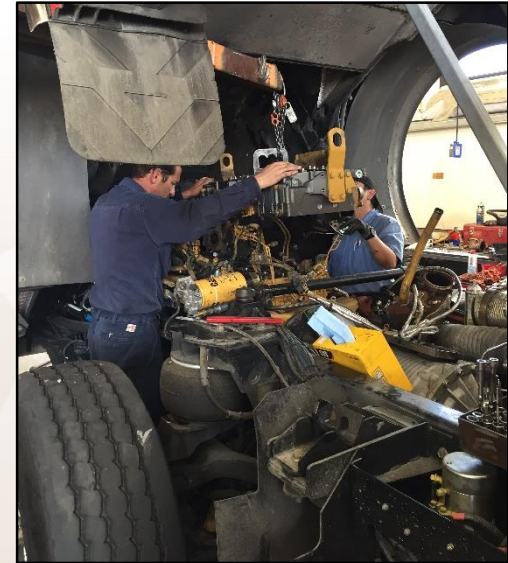
Initiatives

- Employee Retention
- Fleet Replacement
- EV Fleet & Infrastructure



Employee Retention

- Competitive Compensation
- Apprentice Imbalance
- Skills Deficiency
- Costlier Repairs
- Greater Downtime



YEAR	2010	2018
MECHANICS	20	12
APPRENTICES	3	11

Vehicle Replacement Backlog

- 730 Light duty vehicles
- 300 beyond 10 years in service
- Average replacement age 16.5 years
- Replacement guideline 10 years And 100K miles



Innovation & Moving Forward

- Employee Retention
 - Competitive compensation
 - Classification study
- Vehicle Replacement
 - Replacement cycles
 - Funding strategies
- Technology
 - Telematics
 - Data Management
 - Customer Service



2018 Annual Fleet Management Report

May 7, 2018
Transportation & Environment Committee