

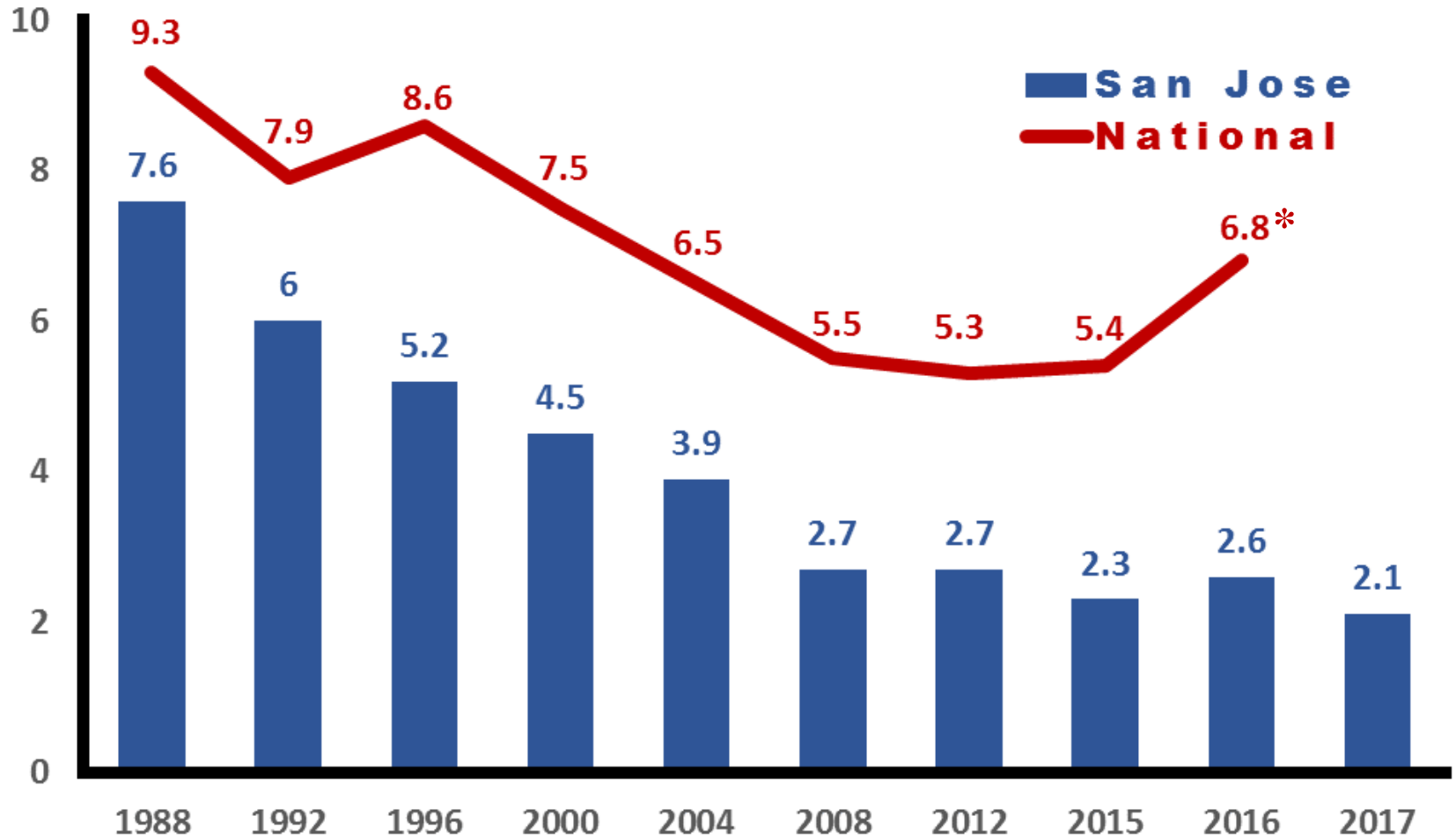
Annual Transportation System Safety Report

“Moving toward zero traffic deaths and providing safe streets for all, as soon as possible”



San Jose Injury Crash Rate

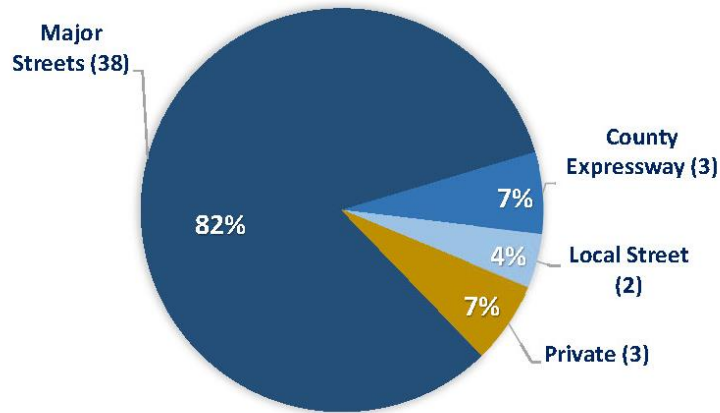
“One Third of the National Average”



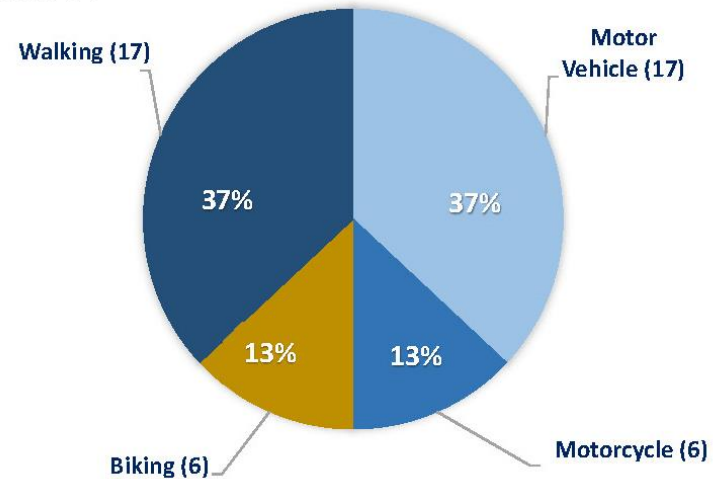
* Estimated

2017 Traffic Fatality Data

LOCATION



MODE



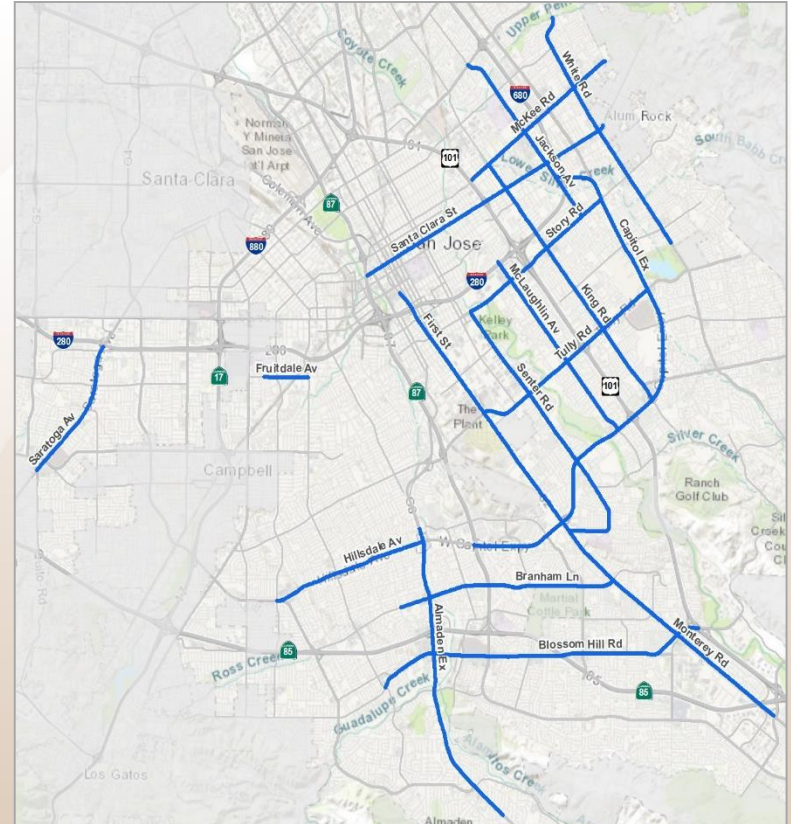
- 89% on major roadways
- 54% during evening hours
- 96% involved adults and seniors, no children under 15
- 70% of pedestrian fatalities occurred mid-block
- Speeding is highest factor in fatalities & severe injuries

Vision Zero Core Principles

1. Traffic deaths are preventable and unacceptable.
2. Human life and safety takes priority over mobility.
3. Transportation system that accounts for human error.
4. Speed is a fundamental predictor of crash survival.
5. Safe human behaviors, education and enforcement are essential to a safe system.
6. Policy alignment at all levels of government.

Evaluation

- 17 Priority Safety Corridors
 - 33% of 2017 fatalities
 - 27% of 2017 severe injuries
- Corridor Safety Audits
- Two-Year Action Plan



Engineering

- Prioritization of Priority Safety Corridor (PSC) Recommendations
- Alignment of Traffic CIP to PSC Safety Projects
- Pedestrian and Bicycle Safety Focus
- Pursuit of Grant Opportunities (Awarded \$45M)
- Complete Streets Design Standards & Guidelines

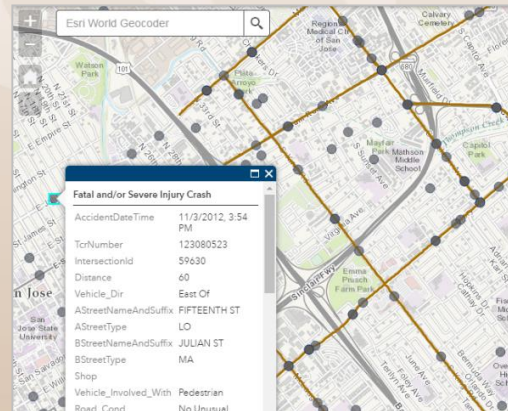
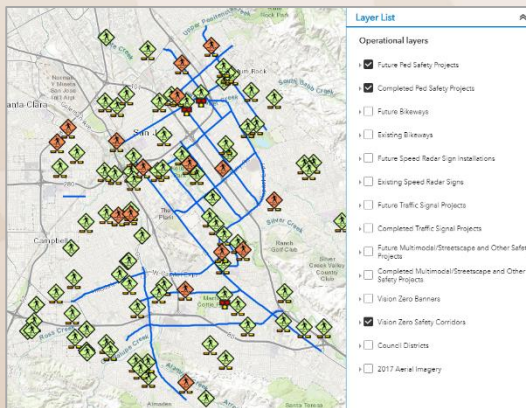
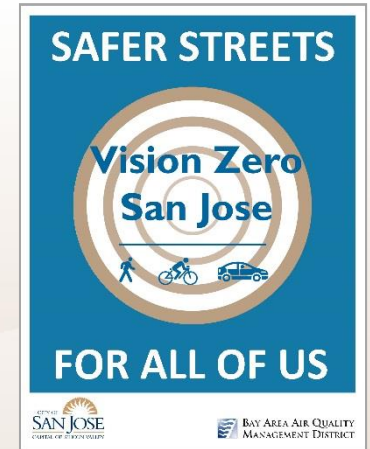
Complete Streets Create Safer Streets

- Complete Streets design treatments can create order; clarity for all roadway users
- Complete Streets typically experience speed reductions, which over time will reduce crashes
- Branham Ln (Alm Ex – Vistapark): 40% fewer crashes in 2017 after roadway restriping
- Moorpark Av (Williams – Saratoga): 20% fewer crashes after roadway restriping



Education & Engagement

- Culture of “Safety First”
- Building Community Awareness
- VZSJ website
- Banners, Media Collateral



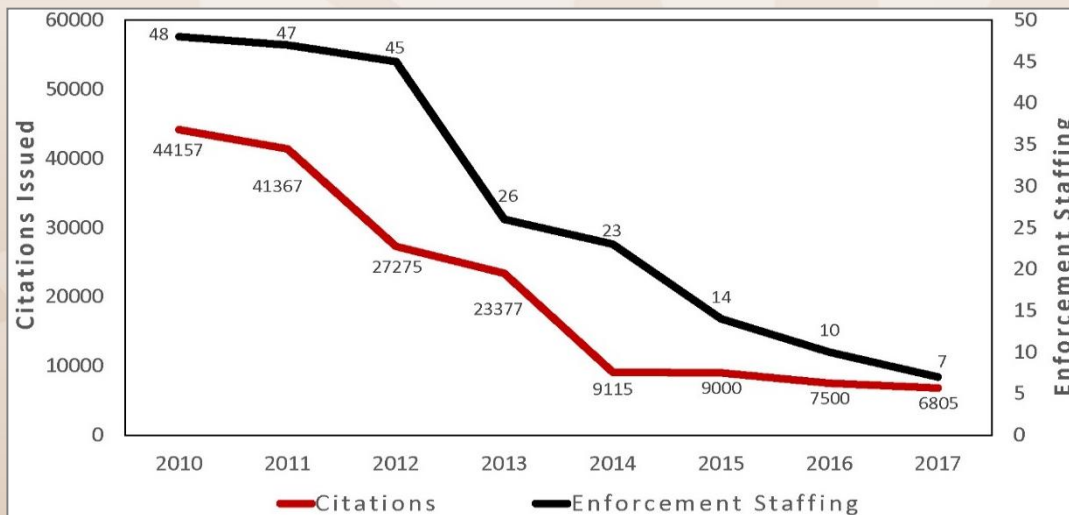
Education & Engagement

- Walk n' Roll
- Traffic Safety Education
 - School Children, including expansion to high schools
 - Adults and Seniors
 - Every 15 Minutes (SJPD)



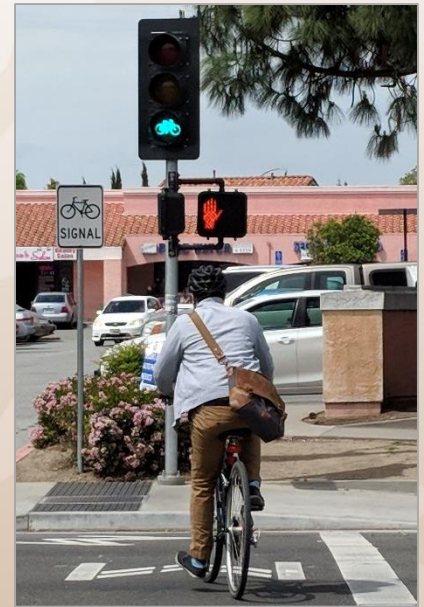
Enforcement

- Decrease in Enforcement Resources
- Optimize Deployment Efforts through Data Analytics
- Overtime – Patrol Officers
- Automated Speed Enforcement



Ongoing Traffic Safety Projects / Programs

- Crosswalk/Bikeway Enhancements
- Radar Speed Display Signs
- Traffic Signal Projects
- Traffic Calming
- LED “Smart” Streetlights
- Adult School Crossing Guards



Annual Transportation System Safety Report

“Moving toward zero traffic deaths and providing safe streets for all, as soon as possible”

