



## d.2. Community Forest Management Plan and Urban Forestry Annual Report

John Ristow  
Director, DOT

Rick Scott  
Deputy Director, DOT

Sara Davis  
City Forester, DOT

John Tu  
Division Manager, PBCE

Transportation and Environment Committee  
June 5, 2023



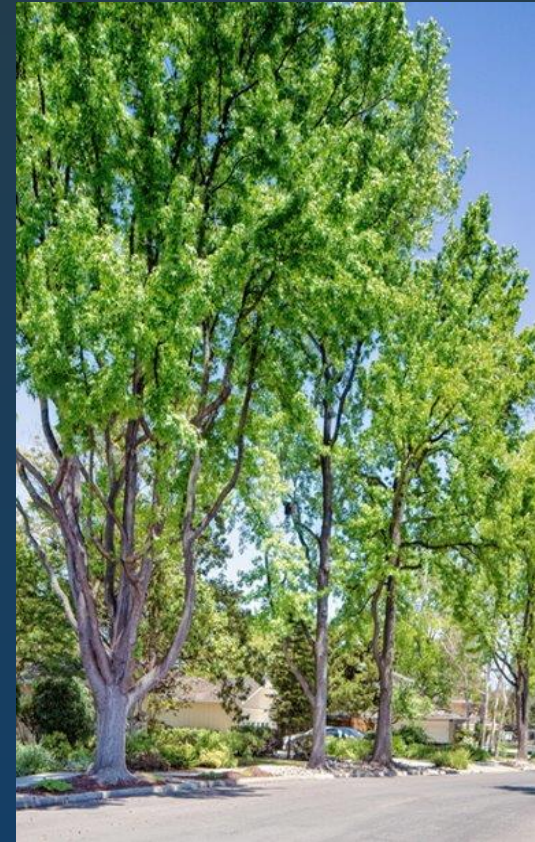
# Community Forest Management Plan (CFMP)

## CFMP Contents

- 3rd party analysis of the City's tree programs
- Strategic Workplan
- Tree Policy & Best Management Practices Manual Update

## CFMP Adoption

- Adopted February 8, 2022, with council supplemental memos
- Supplemental memo called for audit on tree planting, development review, and mitigation fees (complete Jan 23)
- Formation of Community Forest Advisory Committee (CFAC)
- “Biggest step San José has taken for urban forestry” – CalFire



# Findings

- Tree canopy cover declined from 15.3% to 13.2% from 2012-2020
- Economically disadvantaged communities have fewer trees and increased vulnerability to environmental and health impacts
- City staffing and maintenance is underfunded and very low compared to equivalent cities
- Urban infill and development practices limit space for tree canopy growth
- Opportunities for City and Our City Forest to strengthen and expand its partnership
- Inventory for public space and street trees is needed

# Canopy Cover by Council District - 2020

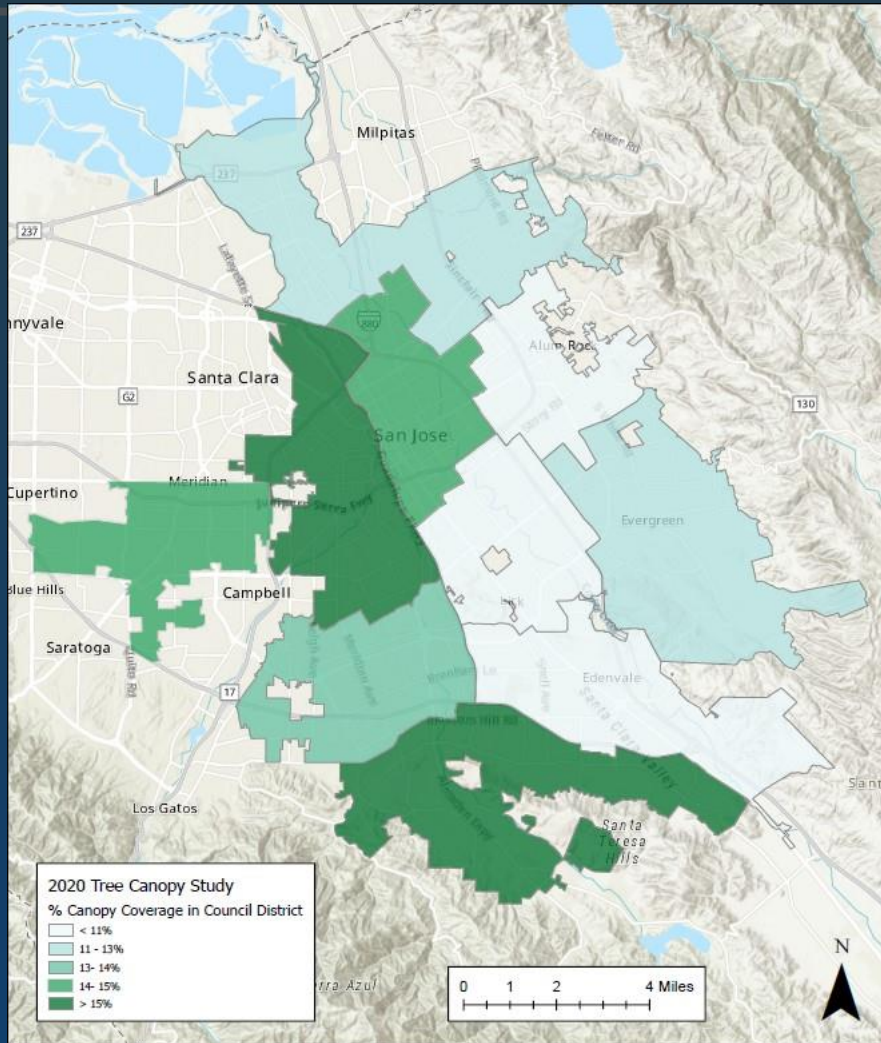


Figure 1 – Canopy by Council District

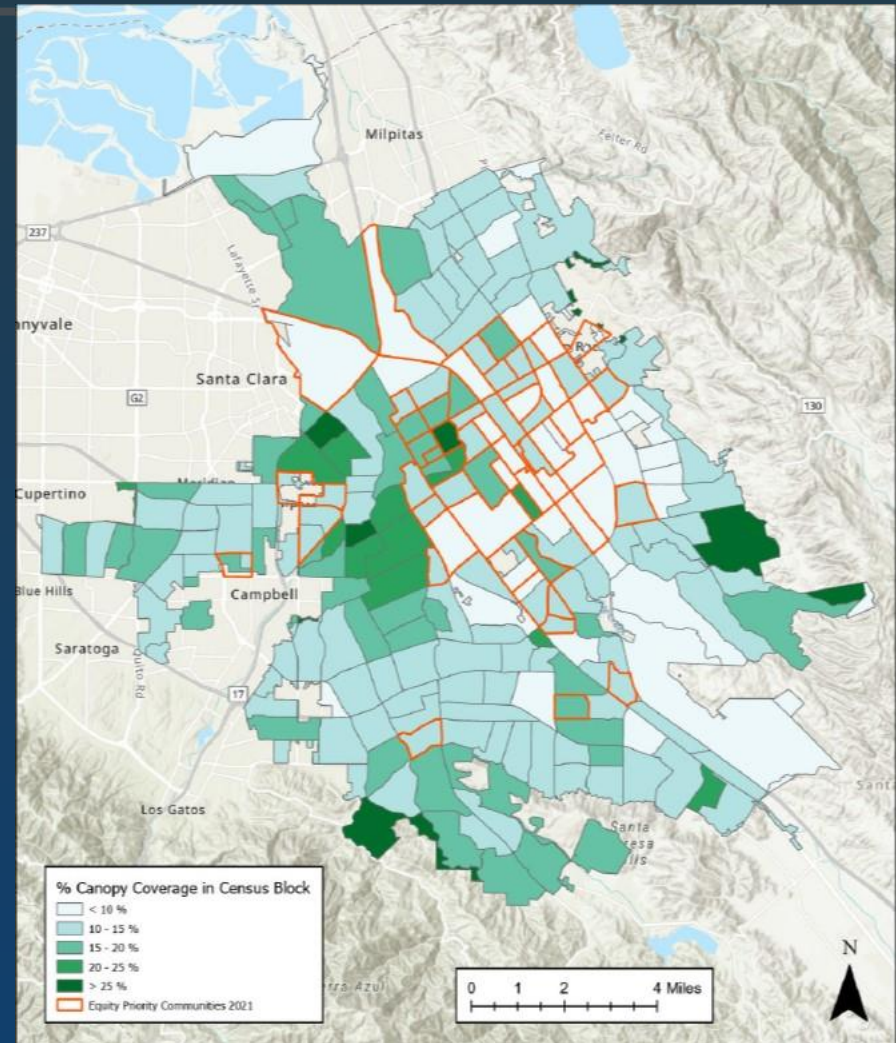


Figure 2 – Canopy by Census Block with Equity Overlay

# Workplan Roadmap: Protect, Preserve, Plant



2022-24



2024 +

Strategies	Objectives		
<b>Streamline the Governance Structure</b>	Include trees in the beginning of the design and planning process	Evaluate tree responsibilities to ensure sufficient org capacity	<b>Provide an arborist review of all Planning Division tree responsibilities</b>
<b>Ensure Community Forest Sustainability</b>	Tree planting activities will promote a sustainable urban forest (biodiversity, fit, dashboard)	Ensure trees are adapted to climate change and support local habitat and wildlife.	<b>Increase tree canopy cover across all census tracts and neighborhoods - 20% by 2051</b>
<b>Support Diversity, Equity, and Inclusion</b>	Diverse stakeholders participate in guiding the development of the community forest program	Prioritize increasing canopy cover in disadvantaged communities.	
<b>Fund the Community Forest</b>	Develop a plan to annually provide funding to the community forest program	Fund community forest management activities at a level to meet best management practices as defined by the City.	
<b>Efficient and Effective Tree Management</b>	Maintain current information on the community forest to ensure management decisions are based on the best available data.	Ensure all City tree management activities and design standards reflect the most current understanding of community forest sustainability.	Community members and private property owners will understand their role in growing and maintaining the community forest.
<b>Standardize and Improve Planning and Development</b>	Protect and preserve mature trees	City planning and development will contribute to increasing tree canopy cover.	



# Accomplishments – and Needs

## Accomplishments FY 22-23

- DOT created a forestry division, hired 5 new FTE, and PRNS hired 1 new FTE
- Planted 2,000 trees - 1,400 more than FY 2021-22
- Community Forest Advisory Council first quarterly meeting
- PBCE implemented citywide design guideline that includes standards for preserving trees and planting new trees
- Parks tree inventory

## Needs

- Increased arborist support of PBCE support for permit approvals
- Funding for a complete public tree inventory
- Update core service metrics
- Public education and outreach strategy (for CFAC)

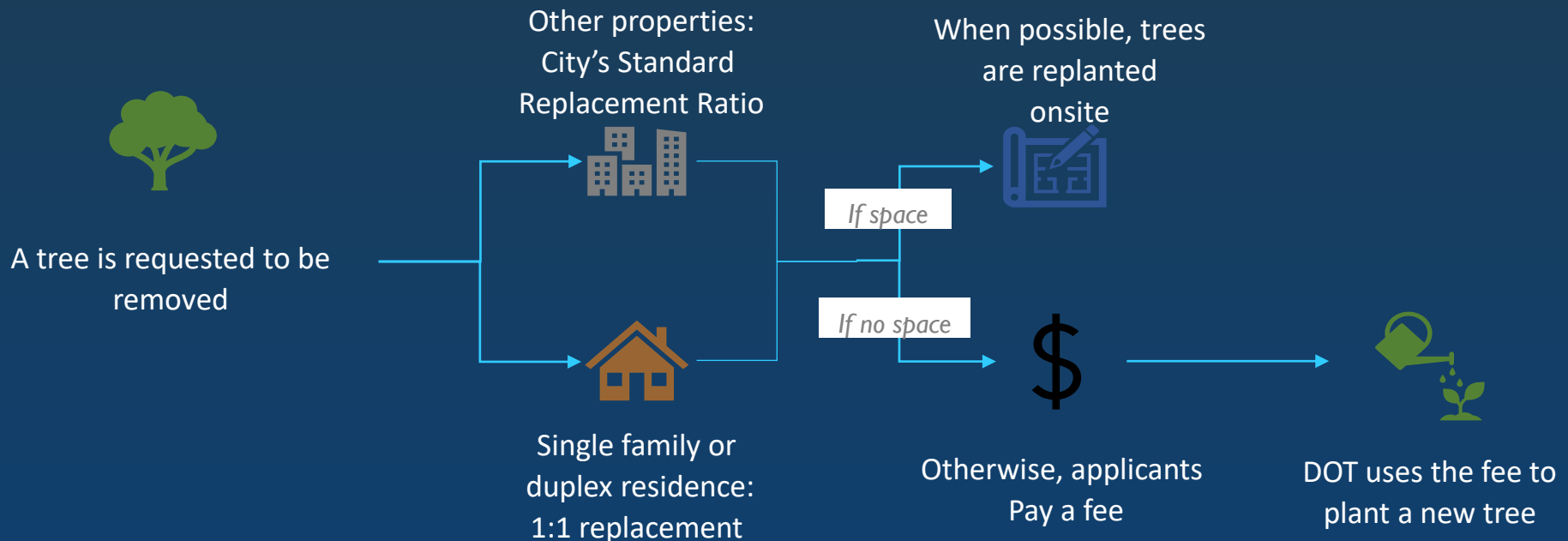


*Arbor day planting event*

# Tree Planting, Development Conditions, and In-Lieu Fees Audit Report

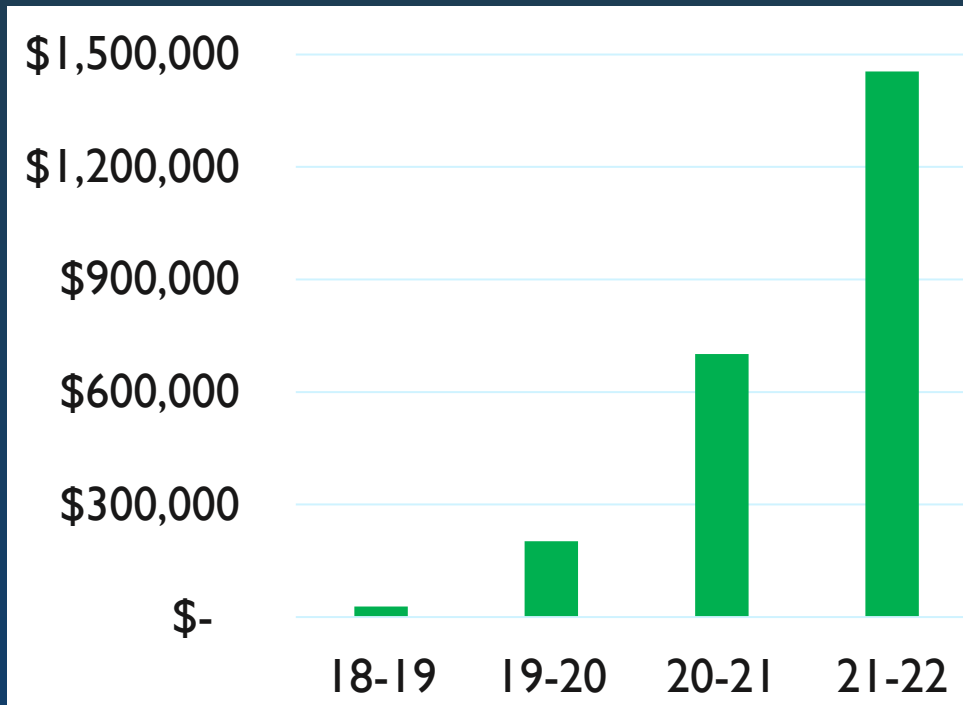
- Audit Recommended in February 2022 adoption of CFMP
- Presented to T & E in November 2022, full Council in January 2023
- 10 recommendations and Council Supplemental Memos contained in Attachment B

## *Private Property Tree Replacement Process*



# Tree Planting, Development Conditions, and In-Lieu Fees Audit Report

## Finding 3: DOT Has Not Been Spending In-Lieu Fees Timely



Source: Audit analysis of FMS and AMANDA fee records.

- Unexpected amount collected
- COVID procurement and vendor impacts
- Staff and partner capacity challenges

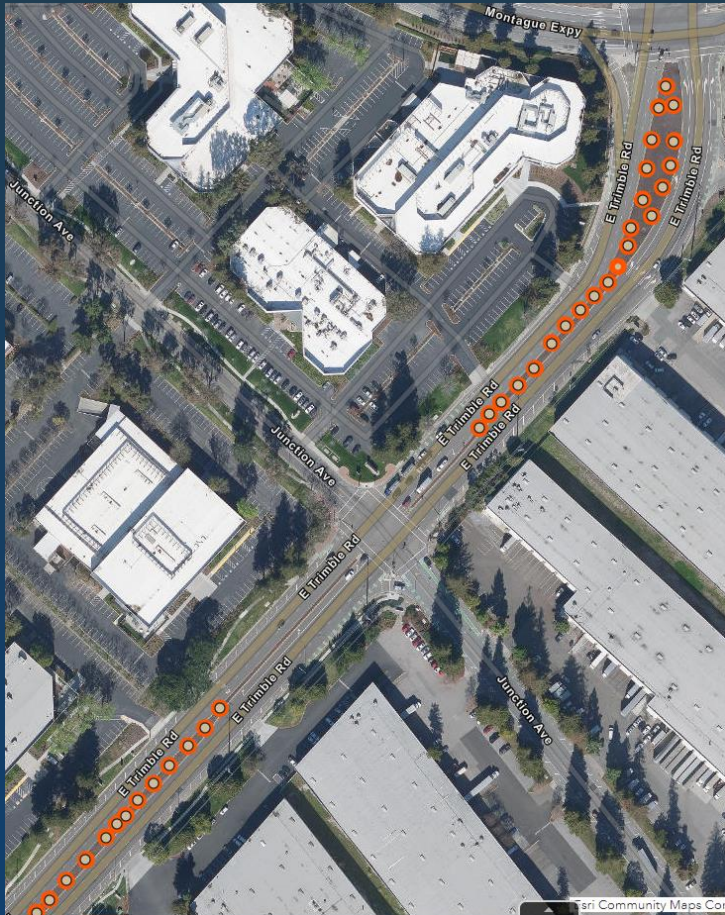
### Audit Recommendations:

- Identify planting locations or uses for accumulated fees
- Create guidelines for how fees should be spent
- Regularly review information on fee collection



# Tree Planting, Development Conditions, and In-Lieu Fees Audit Report

## Finding 3: DOT Has Not Been Spending In-Lieu Fees Timely



### Progress Report since January

- 1861 trees planted as of 5/23 (2000 expected)
- \$660,000 paid/obligated since audit
- Fee collection to be modified in FY 23-24
  - Fees directly to DOT as collected
  - Pilot 50-50 distribution of funds
    - 50% to district collected
    - 50% w/Equity Lens

### Still to Come:

- Increase non-profit and private partnerships
- Explore innovative uses such as concrete demolition

60 trees planted along E. Trimble Rd. in CD 4

# Tree Planting, Development Conditions, and In-Lieu Fees Audit Report

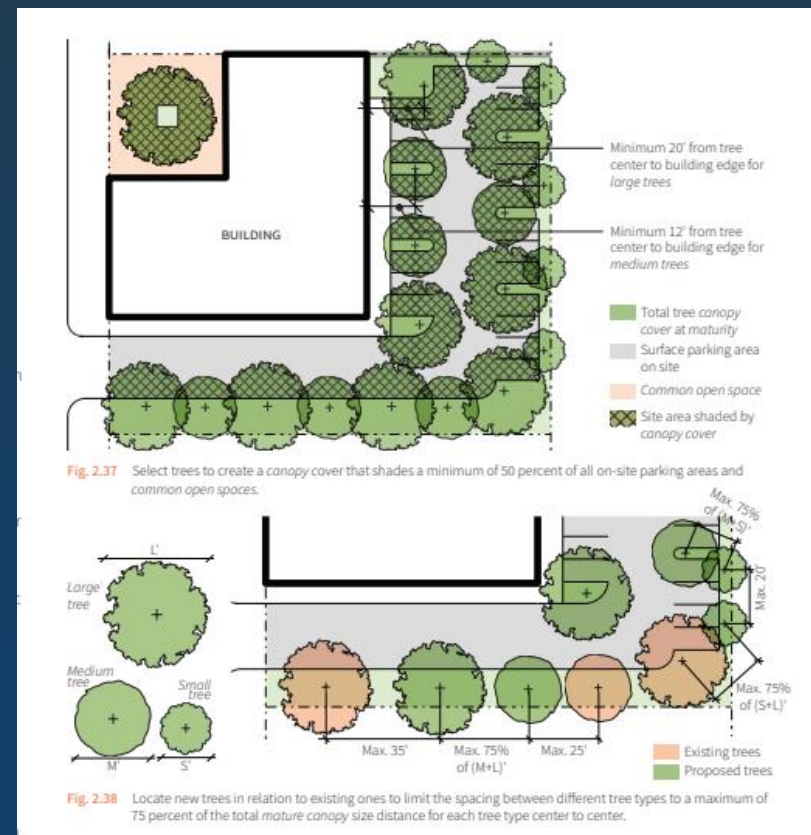
## Findings 1 & 2: Private Property Tree Removal Process Improvements

### Progress Report since Audit Recommendations

- PBCE has formalized internal live tree removal process for staff and on-going training
- Update to our permitting system to track replacement tree after entitlement (submittal of proof, verification, and generation reports for tracking)
- Incorporating DOT Arborist staff in the routing and review of proposals that include live tree removals

### Still to Come:

- Develop and incorporate a new tree replacement policy and conduct outreach
- Updates to the fee schedule and funding



# Next Steps – thru Jan 2023



- Finalize 2,000 planted trees by end of FY every following year
- Update portion of tree inventory
- Seek additional funding from CalFire, OSA, Fed Govt and others for outreach, planting, maintenance, workforce development, inventory
- New maintenance contracts to bid
- Begin process to draft a tree replacement policy
  - Work with CFAC on this and outreach strategies
- Ensure fee collection and distribution in accordance with audit recommendations





# Community Forest Management Plan and Urban Forestry Annual Report

John Ristow  
DOT Director

Rick Scott  
DOT Deputy Director

Sara Davis  
DOT City Forester

John Tu  
PBCE Division Manager

Transportation and Environment Committee – Item d.2  
June 5, 2023