

VTA's BART Silicon Valley Phase II Extension Project

CP2 CTMP for Early Construction
Activities at West Portal

May 23, 2023



Agenda



1. Project Overview
2. Early Construction Activities at West Portal
3. Next Steps



Project Overview

Phase II Project



6-Mile Extension of BART Service

Single-Bore Tunnel

- 5-mile subway tunnel
- 1-mile at ground level

4 New BART Stations

- 3 underground platforms with above-ground station entrance buildings
- 1 ground level platform

2 Mid-Tunnel Facilities

Newhall Yard & Maintenance Facility



Five Year Look Ahead



Based on preliminary schedule for planning purposes.

FTA New Starts Funding Plan



Federal

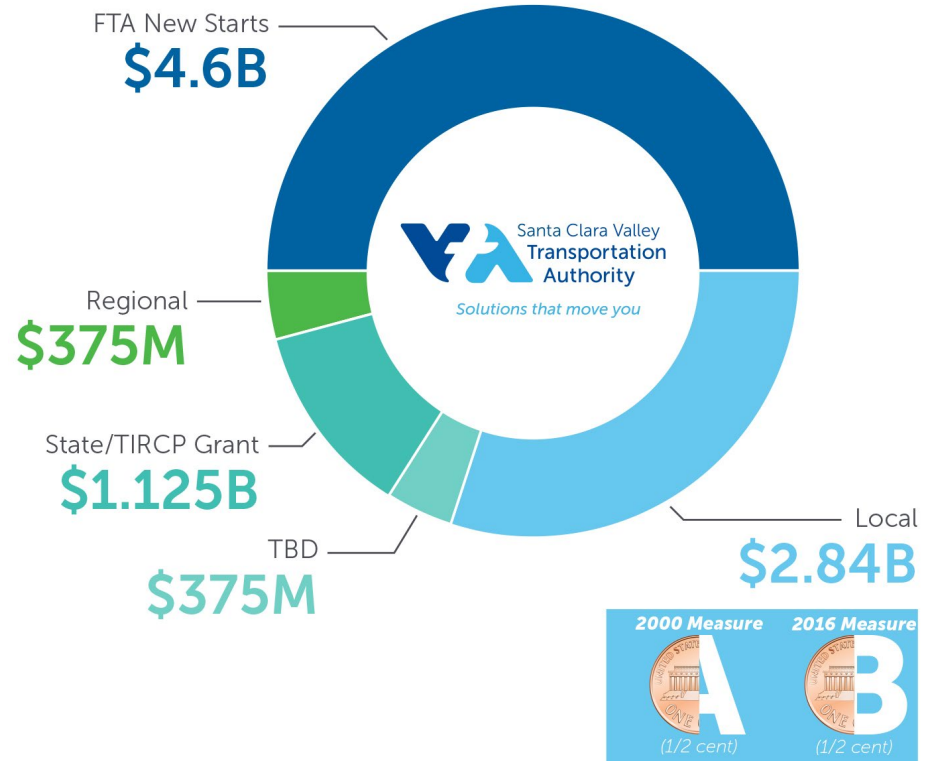
- Federal Transit Administration (FTA) New Starts Program
- Letter of No Prejudice (LONP) up to \$9.318 billion

Local

- 2000 Measure A
- 2016 Measure B
- Public Private Partnership

State/Region

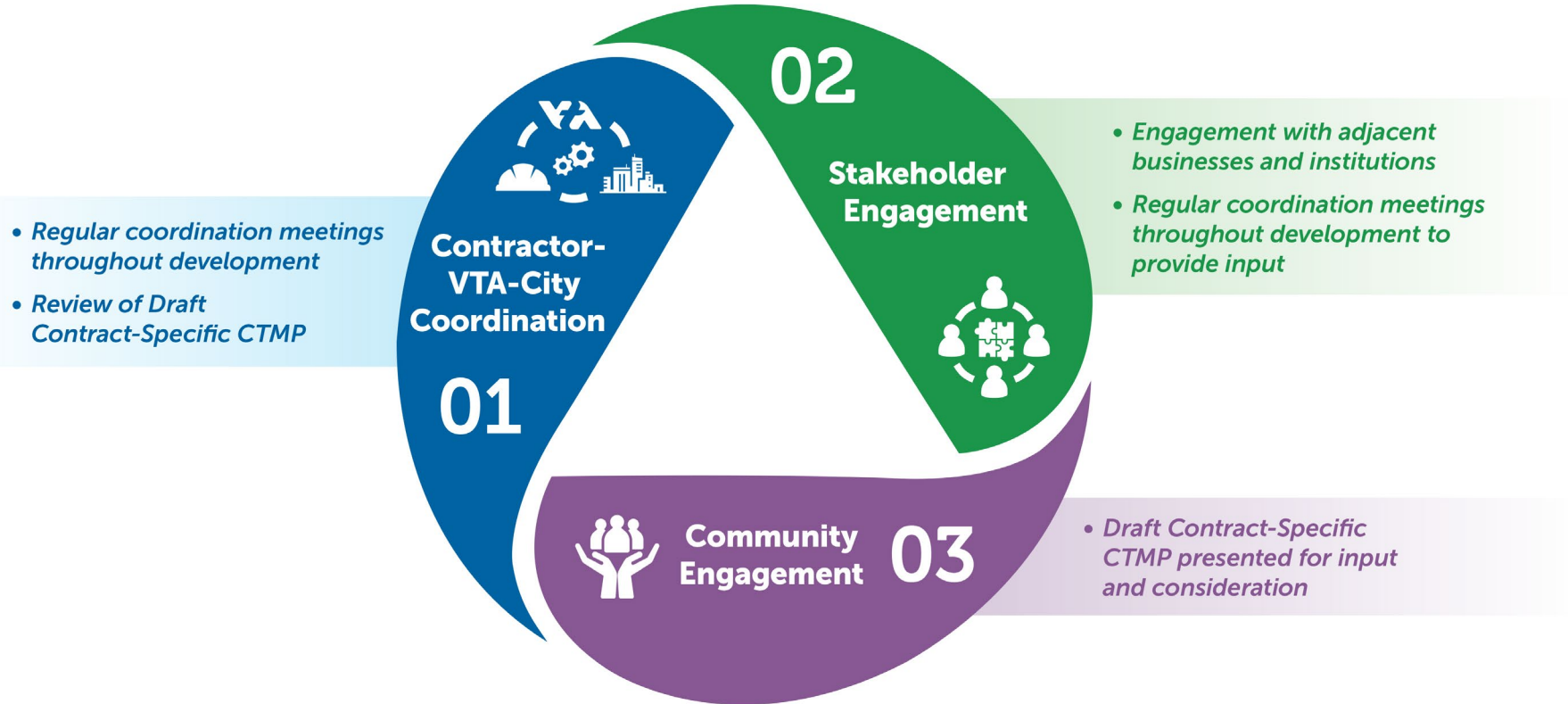
- Transit and Intercity Rail Capital Program (TIRCP)
- Regional Measure 3





Early Construction Activities at West Portal

CP2 Specific Construction Transportation Management Plan (CTMP) Development



Public Meetings

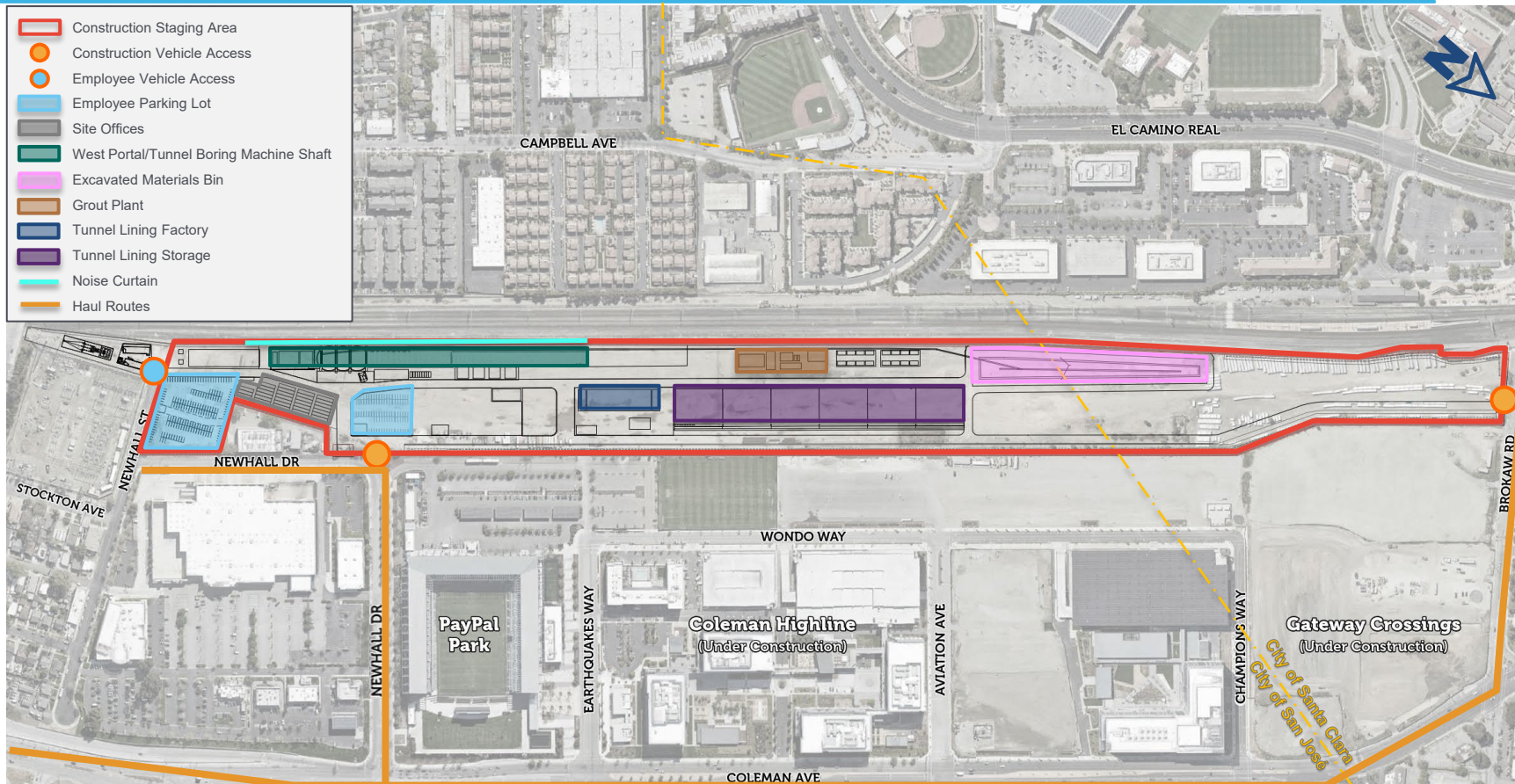


Early Construction Activities Public Meetings

- 3/15 In-person Public Meeting at Santa Clara University (SCU) & 3/16 Online Public Meeting via Zoom
- Connected with the general public to share information re: early construction activities at the West Portal site
- *Event Promotion Outlets:* Physical Mailers, email invites, social media promotion, website
- Attendance:
 - **54 Public Members** attended
 - **30 Questions/Comments** were addressed
- Recorded Online Presentation/Presentation PPT available on Project Website: <https://www.vta.org/programs/community-information>
- Outcome: Generally, very positive



Elements to be Constructed During Early Construction



CURRENT as of May 2023 – FOR DISCUSSION ONLY – Early Construction Activities at West Portal

West Portal Key Early Construction Activities



Activity

Earliest
Anticipated
Start

Anticipated
Duration



Tunnel Lining Factory Construction

Summer 2023 for 12 months



Tunnel Lining Factory Operations

Fall 2024 through Major Construction



Support of Excavation, Construction of TBM Shaft & Portal, and Preparation of TBM Launch Site

Fall 2023 for 15 months



Excavated Materials Bin Construction

Winter 2024 for 6 months

Required Work Hours For Early Construction Activities



2023

2024

2025

Summer

Fall

Winter

Spring

Summer

Fall

Winter

Spring

- **Single Shift Work (6 AM-6 PM)**
- **Saturday Work (6 AM-6 PM)**

- **Double Shift Work (6 AM-4 AM)**
- **Double Shift Hauling* (6 AM-4 AM)**
- **Saturday Work (6 AM-6 PM)**

- **Double Shift Work (6 AM-4 AM)**
- **Single Shift Hauling (6 AM-4 PM)**
- **Saturday Work (6 AM-6 PM)**

Standard Work Hours

Monday – Friday

Saturdays

City of San José

7 AM – 7 PM

9 AM – 5 PM

City of Santa Clara

7 AM – 6 PM

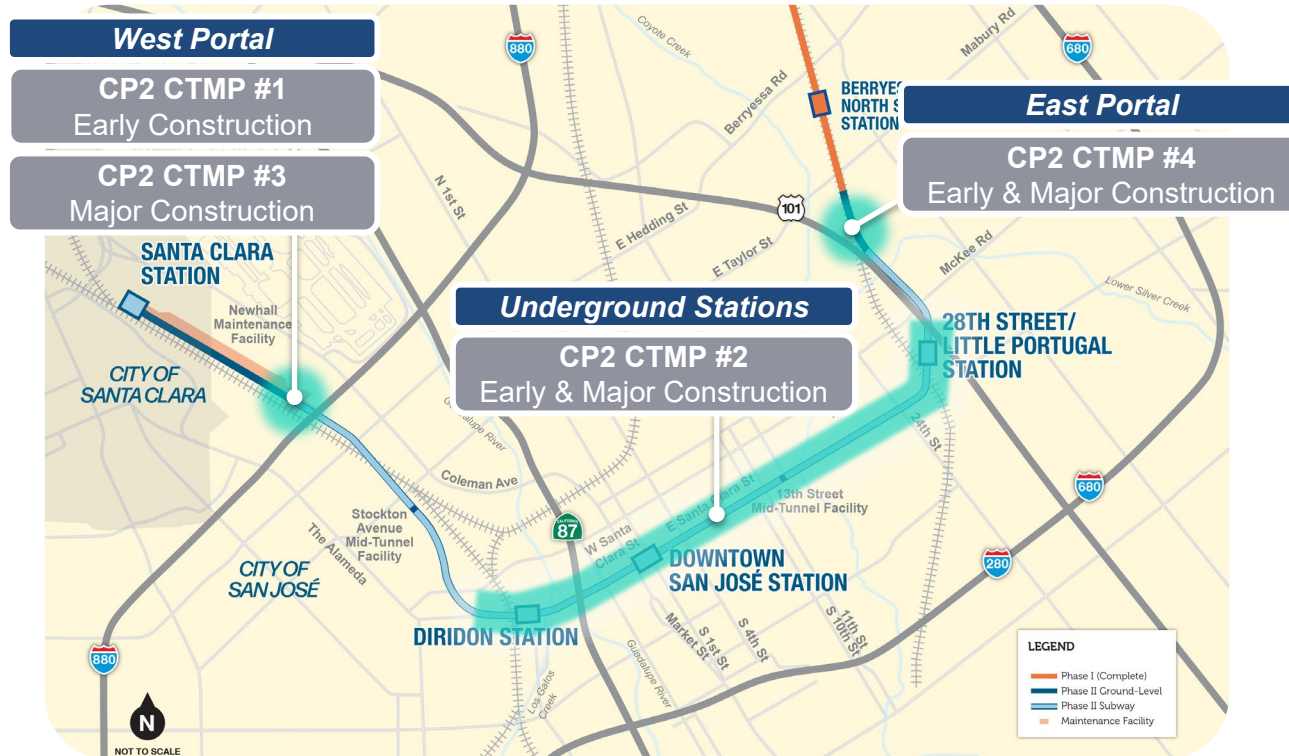
9 AM – 6 PM

**Double shift hauling is only to occur during critical activities and is being coordinated with local stakeholders, including PayPal and Costco*

Anticipated CP2 CTMPs by Work Area



Additional Contract Specific CTMPs will be developed and the work areas that will be covered in them will be determined as the project advances.



CURRENT as of May 2023 – FOR DISCUSSION ONLY – Early Construction Activities at West Portal



PayPal Event Management Plan

- Determine and minimize impacts of truck traffic during PayPal event ingress and egress
- In development by KST, consulting PayPal Park, Costco, Hunter Partners, City of San José, City of Santa Clara



Trucker Management Plan

- Manage and ensure truck drivers are following approved haul routes and truck distribution between Newhall Drive and Brokaw Road
- In development by KST



Traffic Response Plan

- Outlines lines of communication and process to coordinate hauling when Newhall Drive and Brokaw Road are blocked for unforeseen circumstances
- In development by KST, consulting Hunter Partners, City of San José, City of Santa Clara