



Emergency Housing System Expansion

Omar Passons, Jacky Morales-Ferrand,
Jon Cicirelli

City Council Item 8.3

November 29, 2022

Overview



- Noble site removed from recommendation
- Pursue Cerone and Cottle sites



- Success of Emergency Housing
- Emergency Housing Population Focus

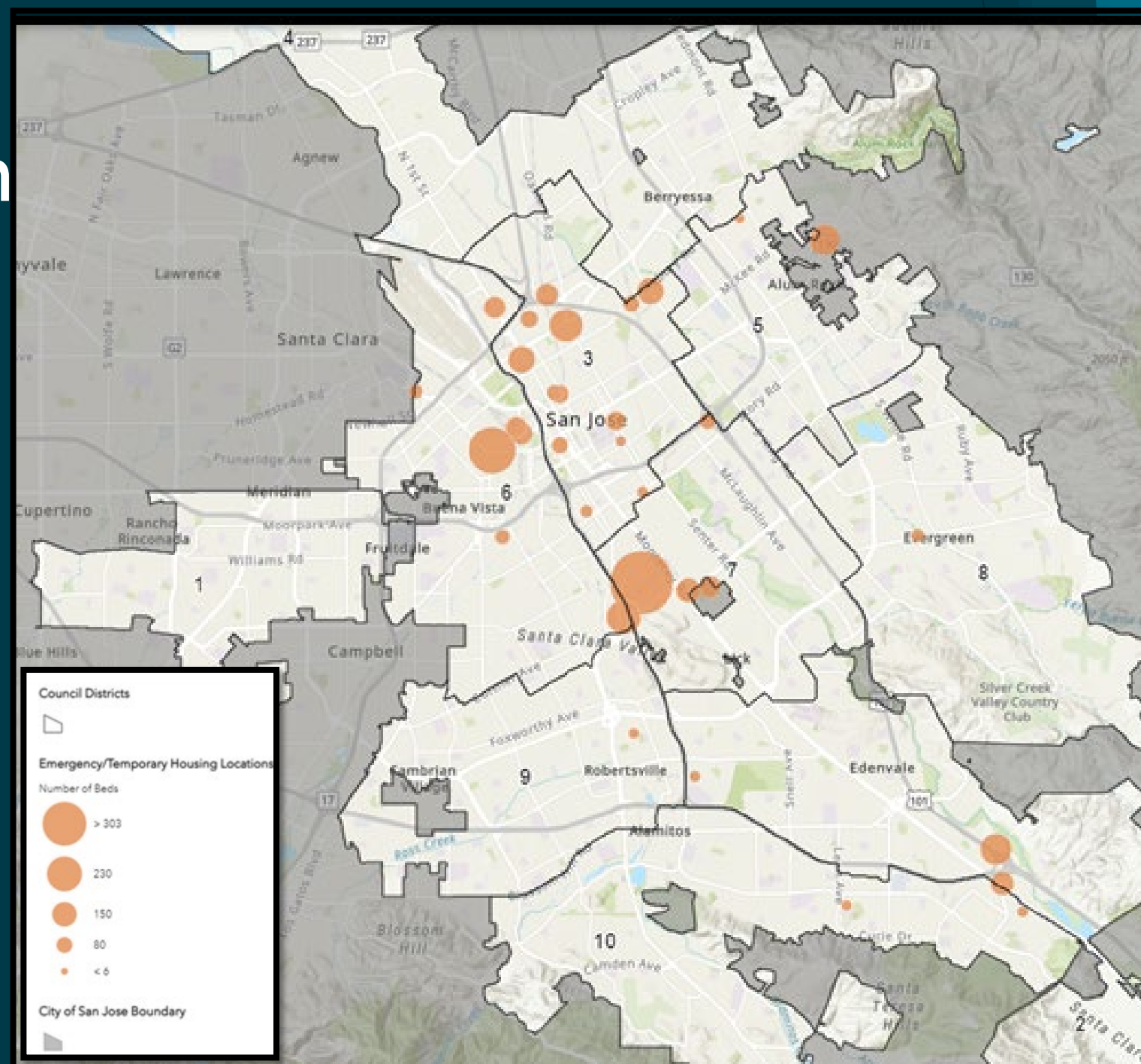


- Neighborhood Conditions
- Neighborhood Service Enhancements

A Citywide Approach – Emergency Housing System

Map of Emergency Shelter, Group Shelter, Transitional Beds (includes EIH/BHC)*

- Existing emergency shelter primarily in City Center
- Expansion of EIH increases equitable distribution & access
- Ongoing efforts Citywide



Siting Emergency Interim Housing

Recommendation: Pursue the Santa Clara Valley Transportation Authority Cerone and Cottle sites while continuing to pursue other identified sites

“Cerone” site

Council District: 4

Location: Southeast corner of Highway 237 and Zanker road

Developable area: approx. 17 acres (city would require 2-3 acres)

Owner: Valley Transportation Authority



Siting Emergency Interim Housing

Recommendation: Pursue the Santa Clara Valley Transportation Authority Cerone and Cottle sites while continuing to pursue other identified sites

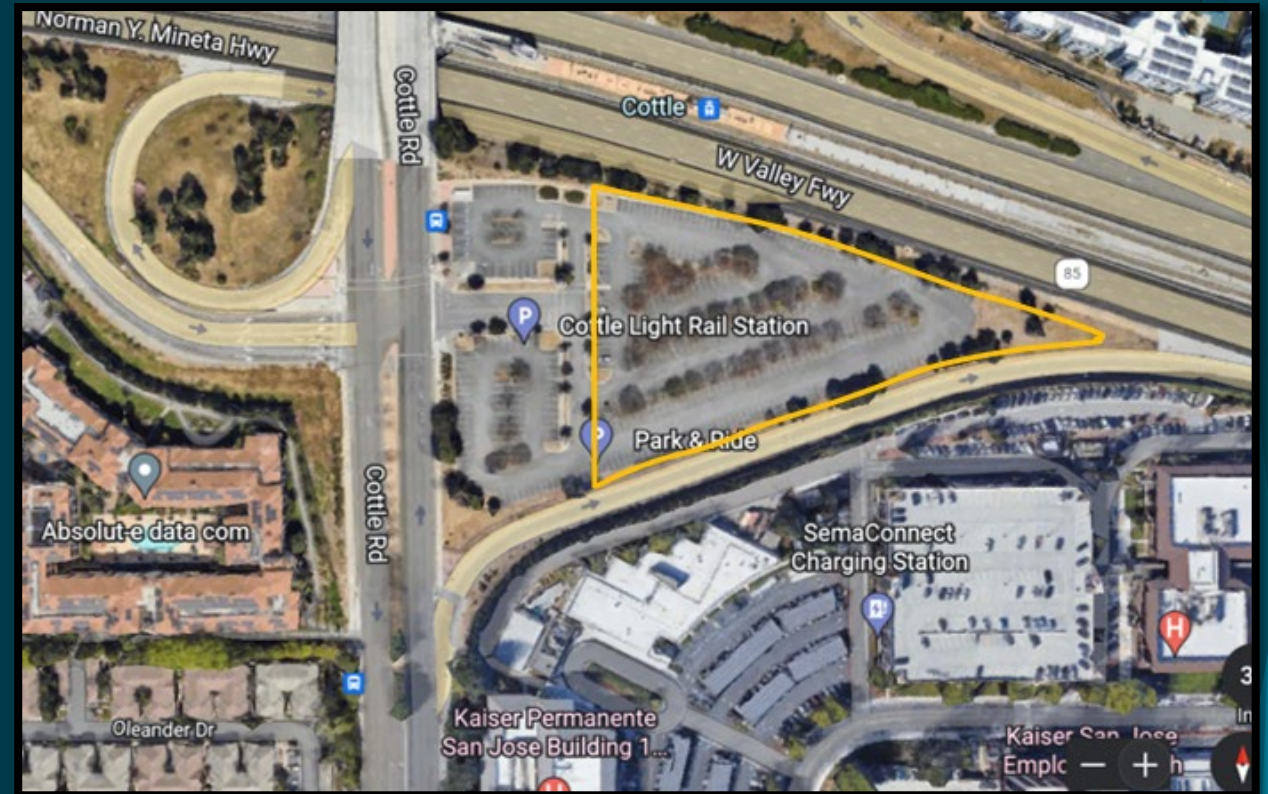
“Cottle” site

Council District: 10

Location: Cottle road bounded by highway 85 and the highway 85 on-ramp, adjacent to Kaiser Permanente San Jose

Developable area: approx. 3 acres

Owner: Valley Transportation Authority



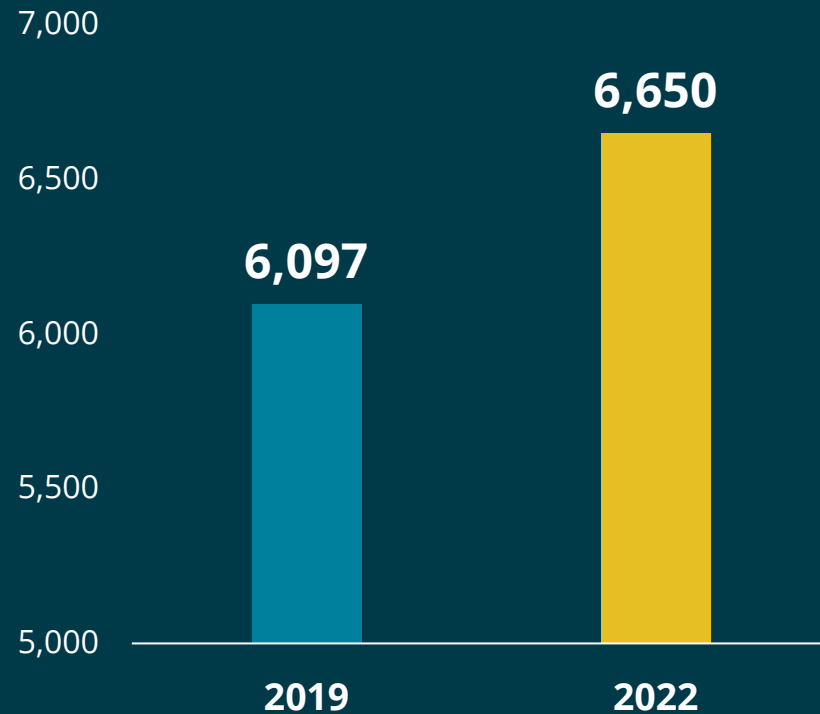
Emergency Housing, a Positive Addition to Communities

- ▶ Clean, quiet, well-maintained
- ▶ Supportive alternative to the street while seeking permanent home
- ▶ A safe place to connect to services



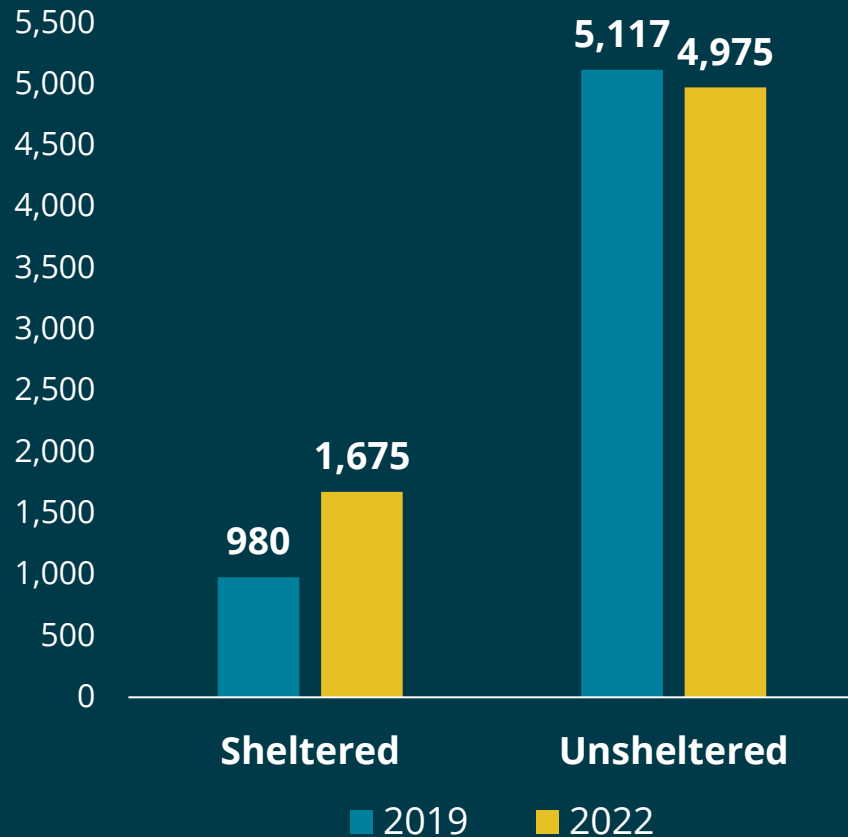
Homelessness Across San José

Total Point-In-Time Count of Persons Experiencing Homelessness in San Jose



9% increase in
individuals
experiencing
homelessness
since 2019

Homelessness Across San José



**71% increase in
individuals
sheltered since
2019**

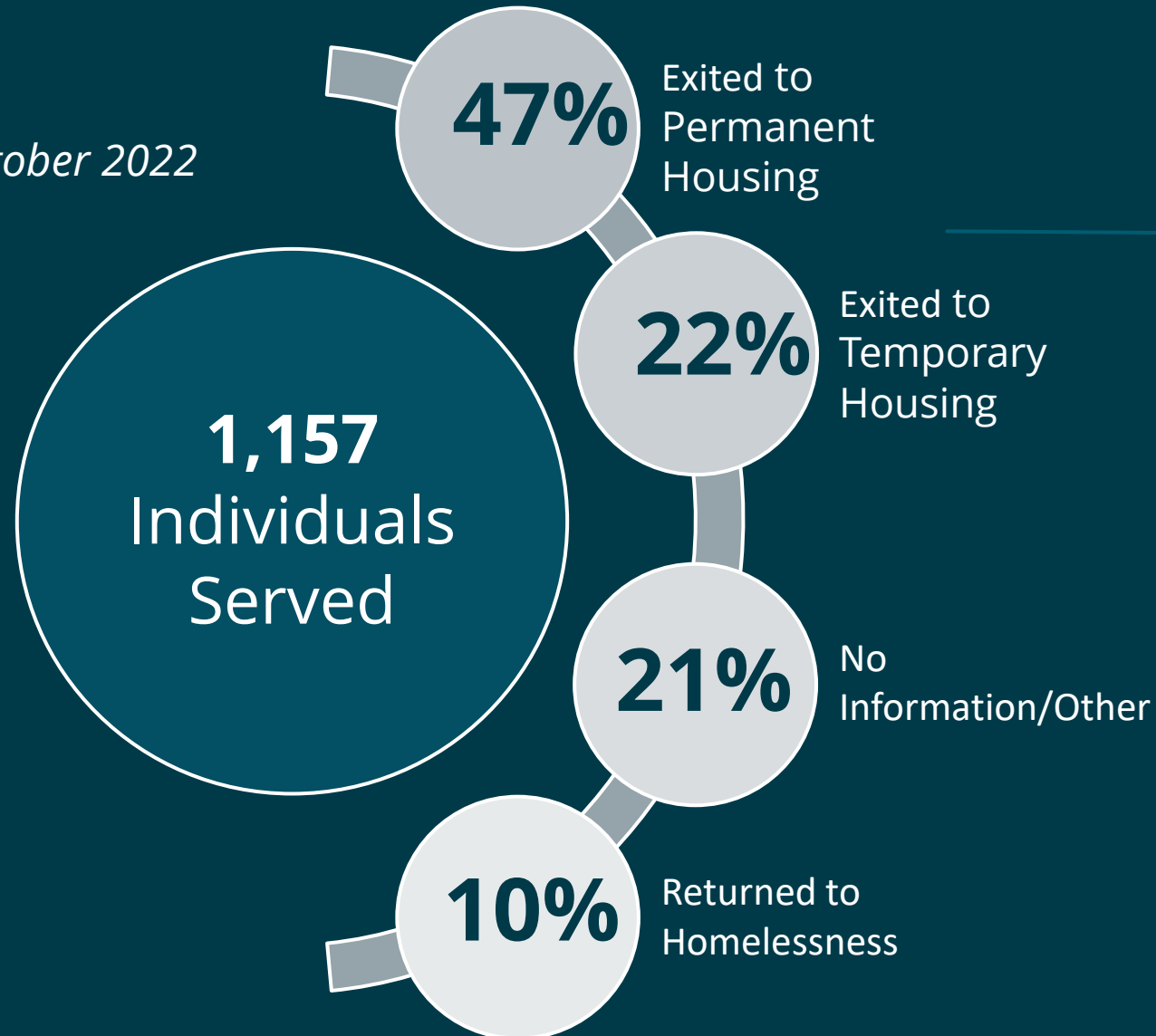
Emergency Housing Sites = Expanded Shelter Capacity

- ▶ Aligned with Community Plan to End Homelessness
- ▶ 397 beds across five sites
- ▶ 222 people currently on waitlist



Success of Emergency Interim Housing

*Timeframe:
January 2020 - October 2022*



*69% of residents
remain housed after
exiting a site*

Focus on Sub-Populations for Emergency Housing Sites

- ▶ Sub-populations at interim housing can provide benefit
- ▶ Homebase study of interim sites will provide additional information
- ▶ Returning to Council in early 2023 with results and specific recommendations on sub-populations



Neighborhoods Surrounding Emergency Housing

- ▶ Emergency Housing improves quality of life for all



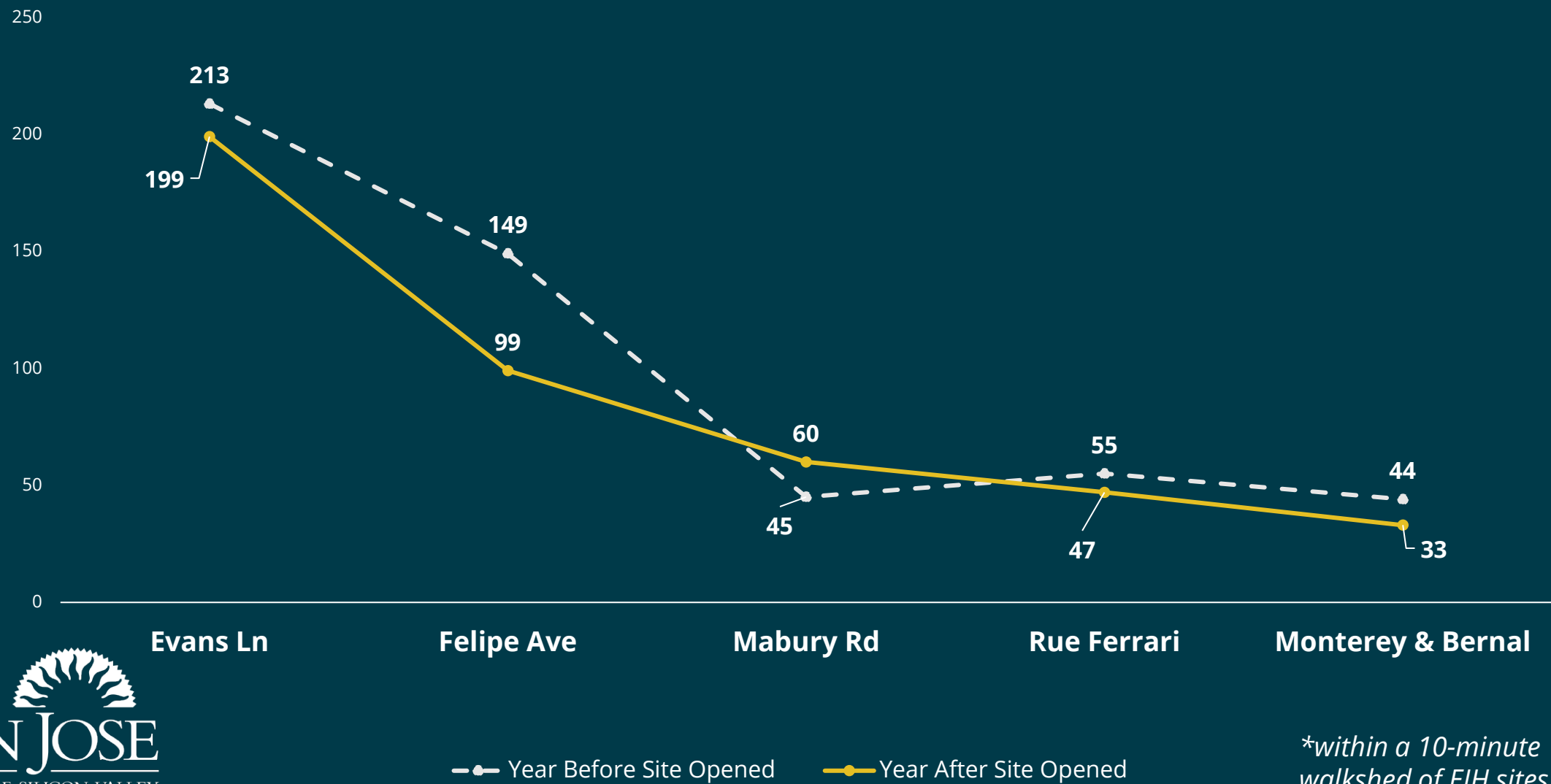
Neighborhoods Surrounding Emergency Housing

- ▶ Resident Concerns
 - ▶ Increased encampments
 - ▶ Increased crime
 - ▶ Attract blight such as trash and graffiti



Neighborhoods Surrounding Emergency Housing

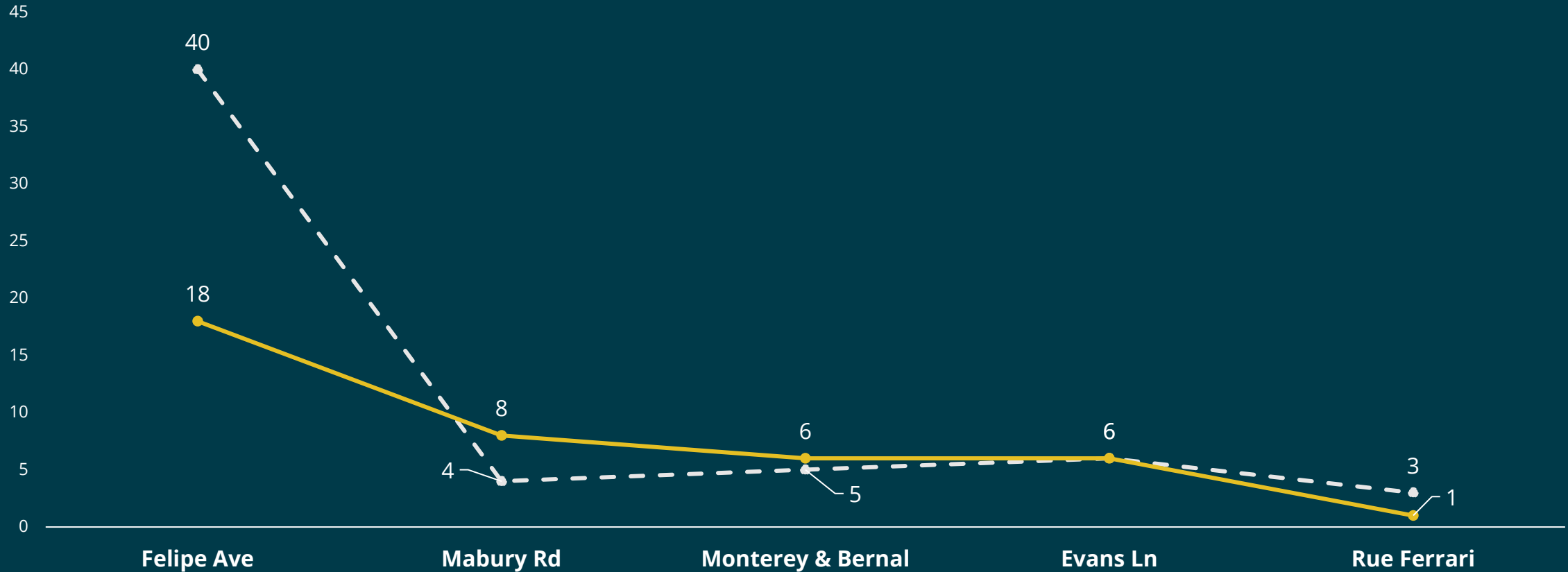
Police (Quality of Life) Calls for Service*



*within a 10-minute walkshed of EIH sites

Neighborhoods Surrounding Emergency Housing

*Fire "Fire" Calls for Service**



- Fire "Fire" Calls for Service (1 year before site opened)
- Fire "Fire" Calls for Service (1 year after site opened)

**within a 10-minute
walkshed of sites*

Summary of Proposed Enhanced Services

- ▶ Proactive case management homeless outreach
- ▶ 48-hour Blight Response
- ▶ 2-3 Day Vehicle Abatement Response
- ▶ Bi-weekly Encampment Trash Service
- ▶ Enhanced Neighborhood Engagement & Monitoring

Recommendations & Alternatives

Option	Enhanced Service Area	No Encampment Area	Key Services	Key Drawback	Estimated Cost <i>(annual, 5 locations)</i>
Recommendation (Service Enhancements)	10 minute/~half-mile walk of EIH/BHC Location	N/A	Homelessness outreach, 48 hr blight response, 2-3 day vehicle abatement response, biweekly encampment trash service, neighborhood engagement and monitoring	High Cost	\$2.5 million
Alternative 1 (Service Enhancements)	10 minute/~half-mile walk of EIH/BHC Location	N/A	Items included in recommendation plus proactive Police patrols, Cash4Trash, litter clean-up, illegal dumping cameras, encampment hygiene, dedicated code enforcement	Very High Cost	\$5.1 million
Alternative 2 (Service Enhancements and No Encampment Zone)	10 minute/~half-mile walk of EIH/BHC Location	150 ft	Homelessness outreach, abate tent/structure encampments, 48 hr blight response, 2-3 day vehicle abatement response, biweekly trash service, neighborhood engagement and monitoring, establish no overnight parking	Small service area	\$3.8 million

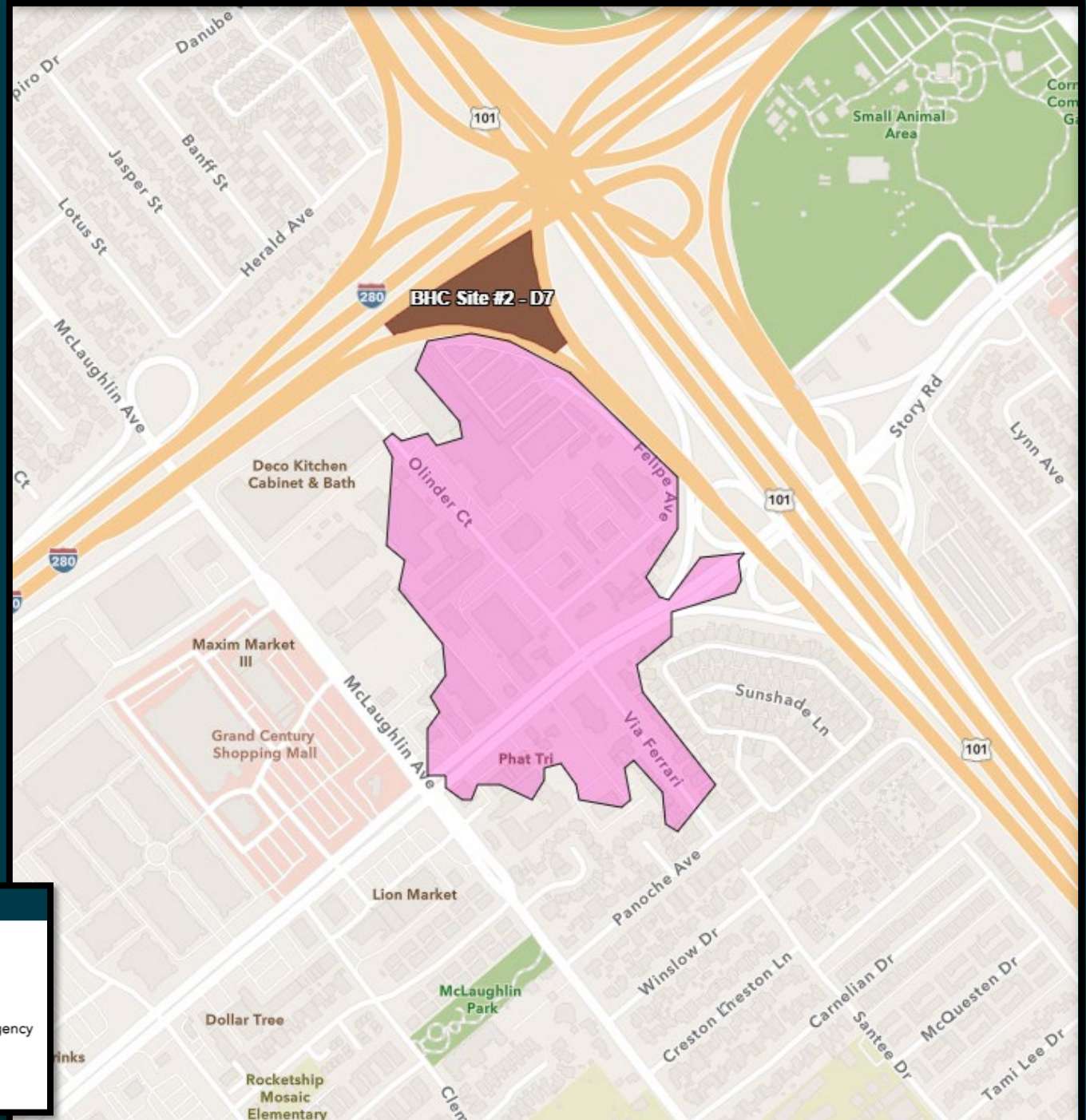
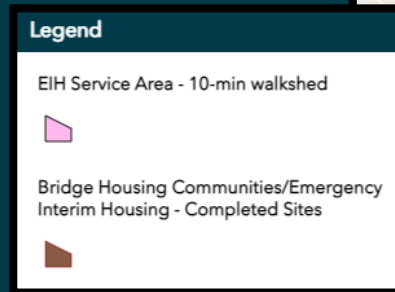
No Encampment Zones

- ▶ Not recommending a “no encampment zone”
 - ▶ Relocates individuals to other neighborhoods
 - ▶ Costly
 - ▶ Requires dedicated staff
 - ▶ Likely ordinance changes
 - ▶ Causes additional trauma
- ▶ Exceptions
 - ▶ Risk to Life/Safety



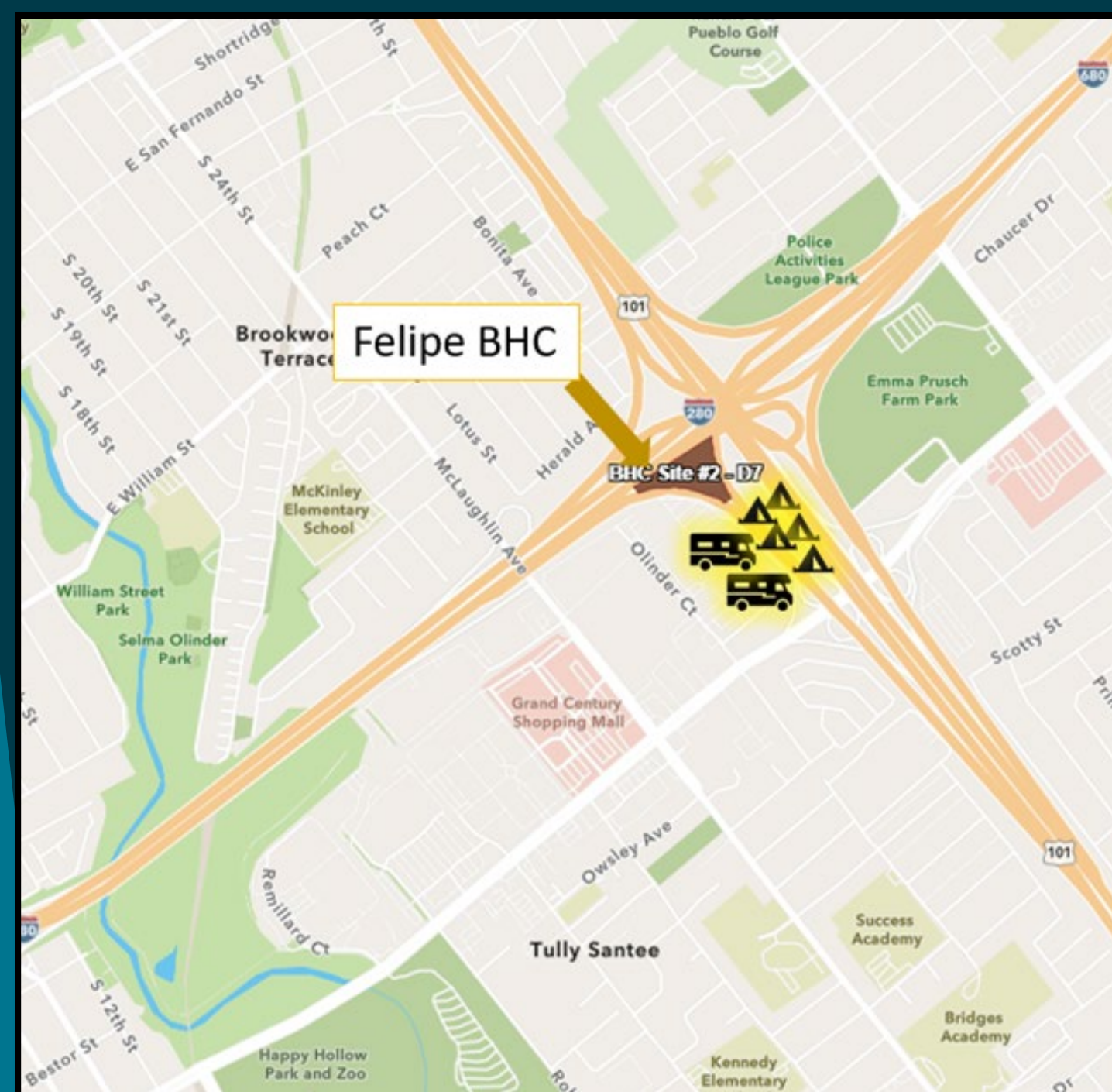
Neighborhoods Surrounding Emergency Housing

- ▶ Implement Service Enhancements within a 10-minute walk of sites
 - ▶ Representative
 - ▶ Used in City Planning



Neighborhoods Surrounding Emergency Housing

- Location of tent and RV encampments at Felipe Ave site



Legend

Bridge Housing Site



Tent Encampment

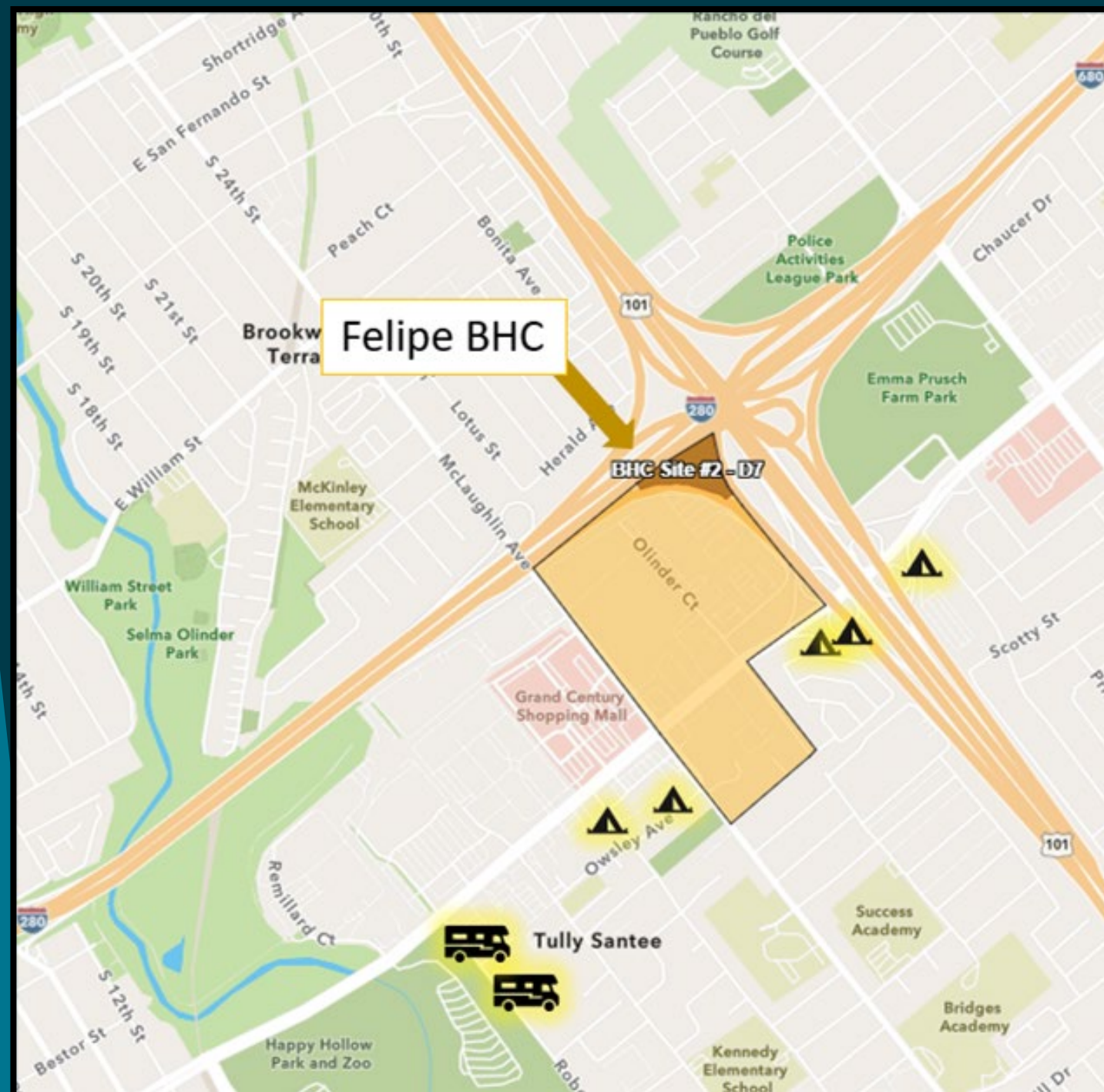


RV/Occupied Vehicle
Encampment



Neighborhoods Surrounding Emergency Housing

- Potential impact of 10- minute, half-mile walkshed (if no encampment zone)



Legend

0.5 mile walkshed



Bridge Housing Site



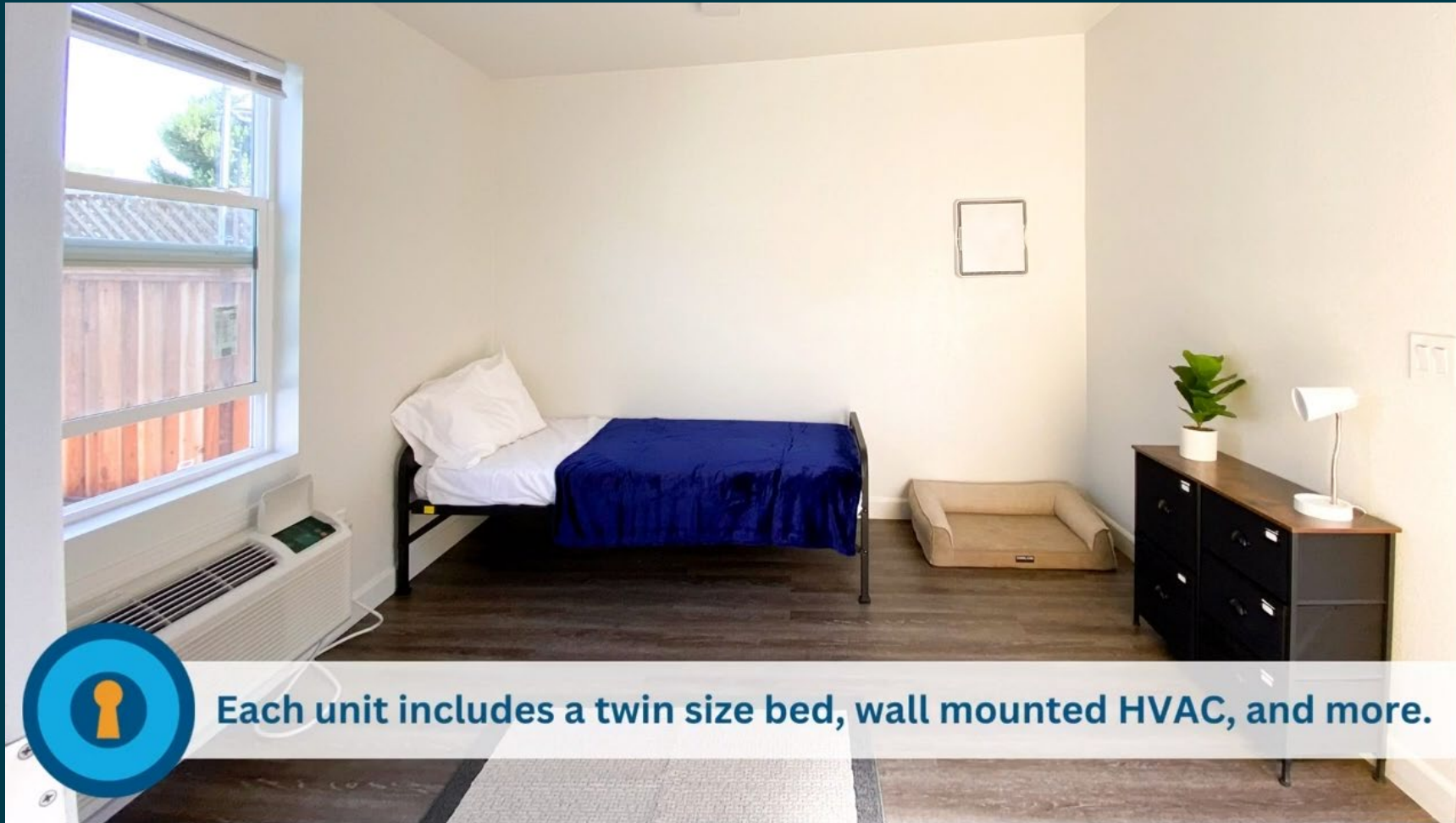
Tent Encampment



RV/Occupied Vehicle Encampment



Who are we helping?



Each unit includes a twin size bed, wall mounted HVAC, and more.

Conclusion

- ▶ Site Recommendations
 - ▶ Remove the Noble site from consideration for Emergency Interim Housing;
 - ▶ Pursue the Santa Clara Valley Transportation Authority Cerone and Cottle sites while continuing to pursue other identified sites;
- ▶ Population Focus Recommendations
 - ▶ Implement a subpopulation focus at Emergency Interim Housing sites by level of care needed; and
- ▶ Neighborhood Enhancement Recommendations (that could be considered in budget process)
 - ▶ Proactive homeless case management outreach
 - ▶ Expedited illegal dumping/trash/graffiti removal
- ▶ Create monthly accountability/monitoring dashboard reporting on illegal dumping, graffiti, occupied vehicles, police calls for service, and fire (medical, fire, and other)