



Parks, Recreation & Neighborhood Services Community Garden Program Status Update

Neighborhood Services and Education Committee
November 10, 2022

Avi Yotam, Deputy Director
Torie O'Reilly, Division Manager
Leticia Espino, Program Manager
Manuel Perez, Community Activity Worker

What is a Community Garden?

- A community garden is a piece of land gardened or cultivated by a group of people individually or collectively.
- In community gardens, the land is divided into individual plots for persons to grow their own vegetables, fruits, herbs, and flowers.
- Plots range in size at different gardens.



BENEFITS OF A COMMUNITY GARDEN

Increases Access to Fresh Foods



Improves Food Security

Builds a Strong Community



Increases Physical Activity

Improves Mental Health



Fast Facts



Established in 1977

Nuestra Tierra was the first Community Garden with 235 plots.



Cost

A Community Garden plot costs 43 cents per square foot.



Plot Size

Plot sizes range from 100 – 600 square feet, with the most common size being 200 square feet.

Connection to ActivateSJ

Stewardship



Ensures sustainability of garden spaces for future use.

Nature



Participants learn about nature's rhythms and cycles by planting and growing through all seasons.

Equity & Access



Provides fresh food and access to outdoor spaces to those who may not have access.

Identity



The combination of backgrounds and experiences from the gardeners who have been part of the greater San Jose community.

Public Life



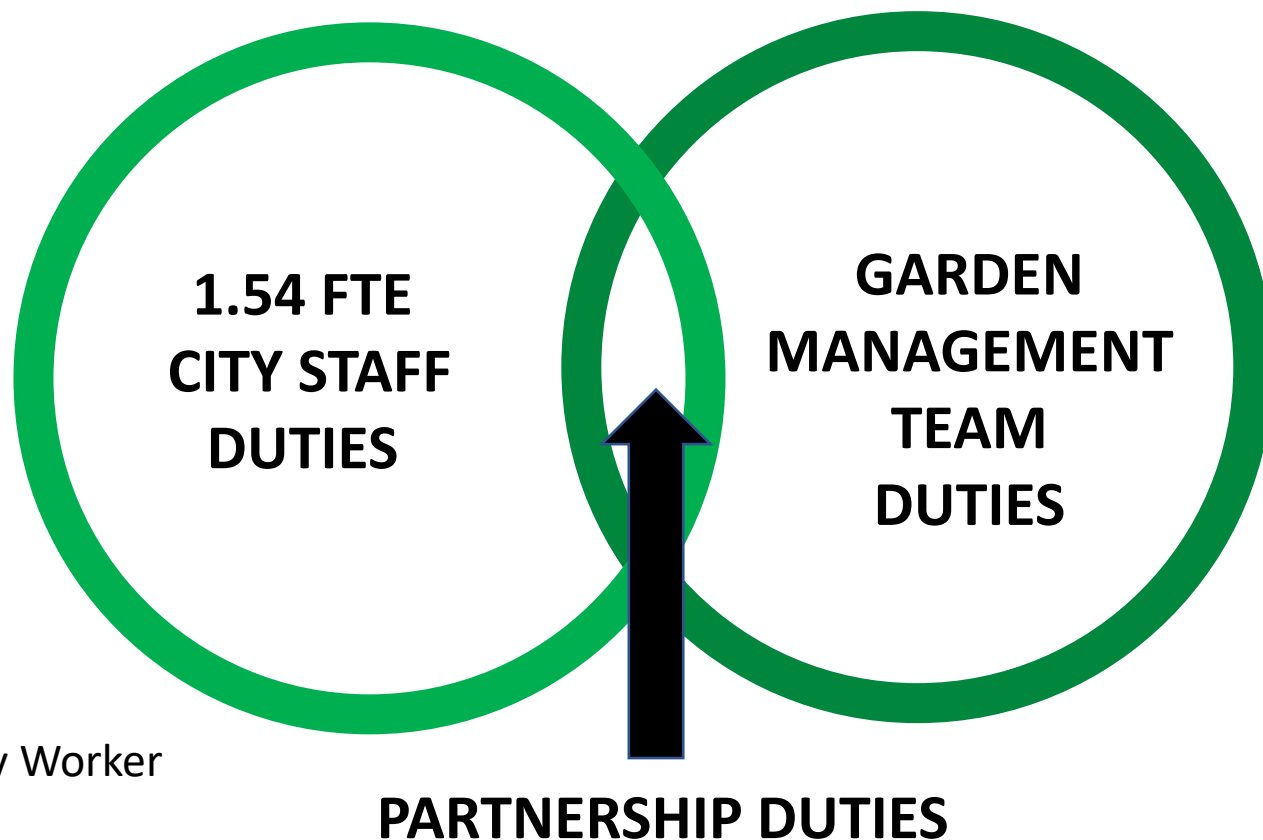
Creates gathering places for participants to share meals and stories.

Program Overview

Garden Name	Garden Location	Total Plots	Council District
Calabazas	Blaney Ave. and Danridge Dr.	33	1
Pueblo de Dios	3257 Payne Ave.	27	1
Rainbow	Johnson Ave. and Rainbow Dr.	4	1
Discovery	Branham Lane E. & Discovery Ave.	40	2
Rusty Areias	5283 Snell Ave. (Martial Cottle Park)	46	2
Bestor	S 6th St. and Bestor St.	10	3
Alviso	Tony P. Santos and Wilson Way	30	4
Berryessa	Cape Colony and Commodore Dr.	79	4
Cornucopia	S. King Rd. and Story Rd. (Emma Prusch Farm Park)	48	5
El Jardin	S. King Rd. and Story Rd. (Emma Prusch Farm Park)	80	5
Esther Medina	S. 31st St. and E. San Antonio St.	19	5
Mayfair	Kammerer Ave. and Sunset Ave.	116	5
Guadalupe	Walnut St. and Asbury St.	79	6
Hamline	Hamline St. and Sherwood Ave.	31	6
Jesse Frey	W Alma Ave. and Belmont Way	35	6
Wallenberg	Curtner Ave. and Cottle Ave.	82	6
Coyote Creek	Tully Rd. and Galveston Ave.	76	7
Nuestra Tierra	Tully Rd. and La Ragione Ave.	105	7
Vietnamese Heritage	Roberts Ave. & Roberts Place.	51	7
La Colina	Allegan Circle near Lean Avenue.	91	10
Laguna Seca	Manresa Ct. and Bayliss Dr.	30	10



Garden Management



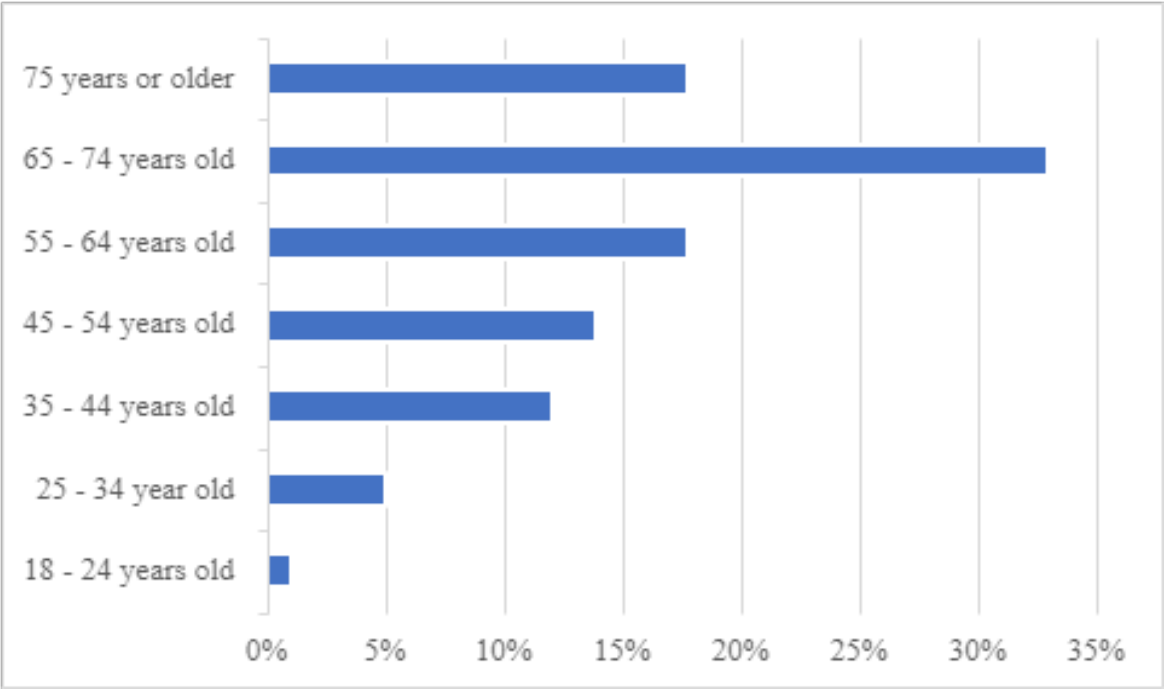
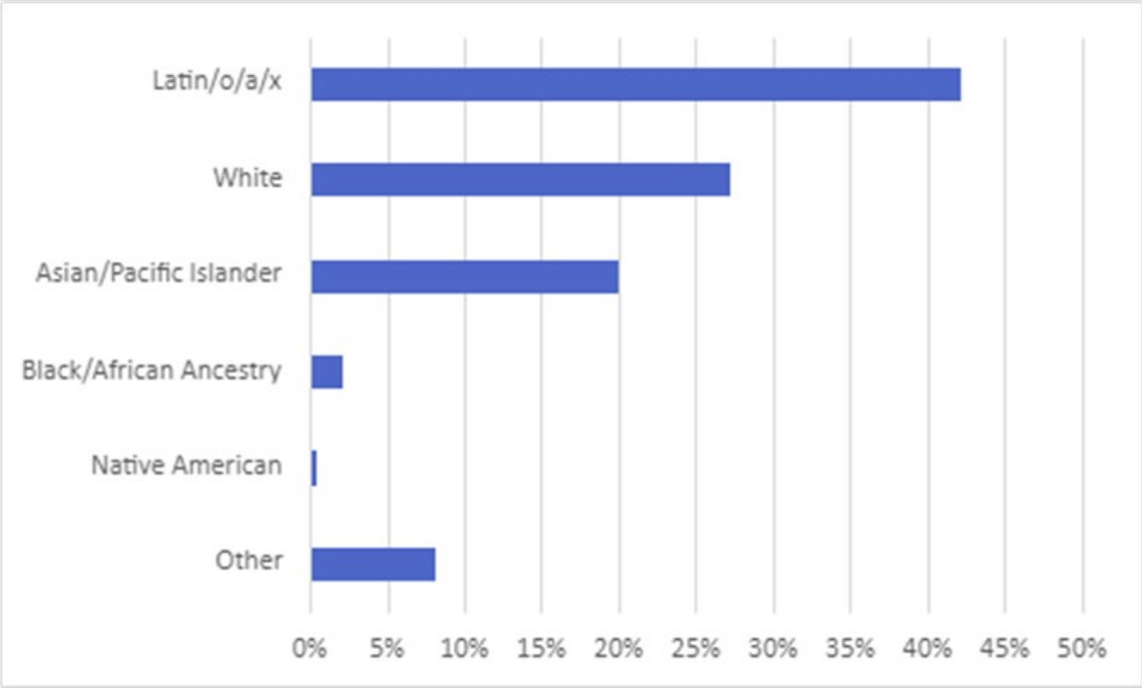
CITY STAFF

- 1.00 Community Activity Worker
- 0.54 Recreation Leader

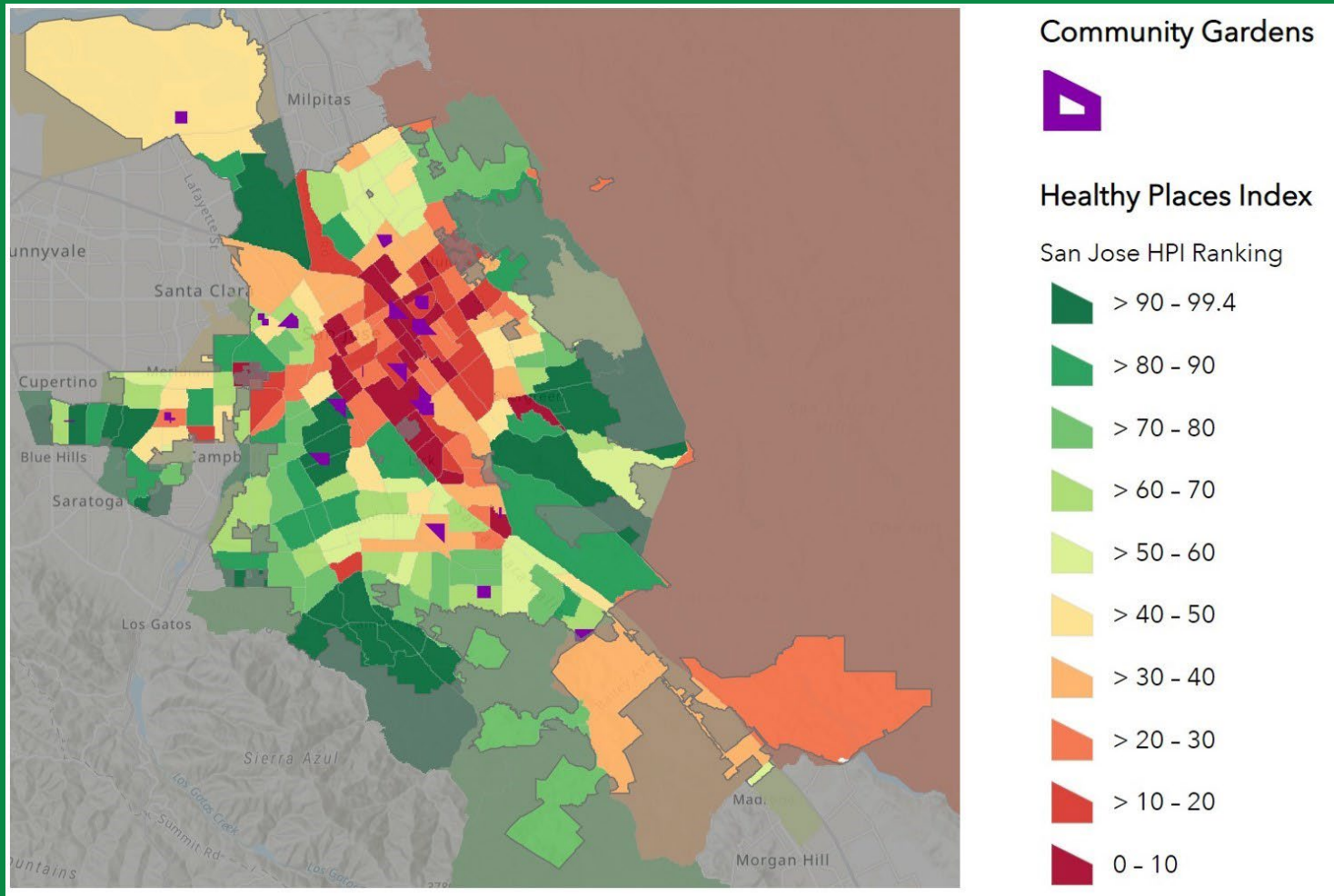
GARDEN MANAGEMENT TEAM

- Garden Manager
- Assistant Manager
- Secretary
- Treasure

Gardener Demographics – Survey Results



Using Heat Maps to Tell the Story



- The HPI tool evaluates 23 key drivers of health in a neighborhood
- Scores less than 50 identify communities at risk for lower health outcomes
- 56 percent of Community Gardens are in areas with an HPI of 50 or less

Unmet Need and Growing Demand Citywide

- Lower HPI gardens have a mix of higher vacancy rates and some waitlists
- Higher HPI gardens have lower vacancy rates and high waitlists
- 75 percent of surveyed gardeners report they would qualify for a City scholarship if offered
- Over 100 residents in the Mayfair area reported having interest in the program but not signing up due to cost



Moving Forward

- Assess the Current Program and Develop Measurable Goals for Service
- Increase Level of Service Provided by Existing City Gardens through Changes in Programming
- Explore collaboration with Private or Nonprofit Organizations
- Identifying New Sites
- Reduce Economic Barriers to Participation
- Actively Manage Waiting List





Parks, Recreation & Neighborhood Services Community Garden Program Status Update

Neighborhood Services and Education Committee
November 10, 2022

Avi Yotam, Deputy Director
Torie O'Reilly, Division Manager
Leticia Espino, Program Manager
Manuel Perez, Community Activity Worker