


SMART CITIES DATA PLATFORMS STATUS REPORT

City of San Jose – Smart Cities and Services Improvements Committee – June 02, 2022



Presented by:

Vince Pereira, Information Technology Manager, Department of Transportation
Jesse Mintz-Roth, Vision Zero Program Manager, Department of Transportation



Accept the status report on Smart Data Platforms, related to a City Roadmap item for Vision Zero, which includes insights for transportation planning and addressing crashes and fatalities.



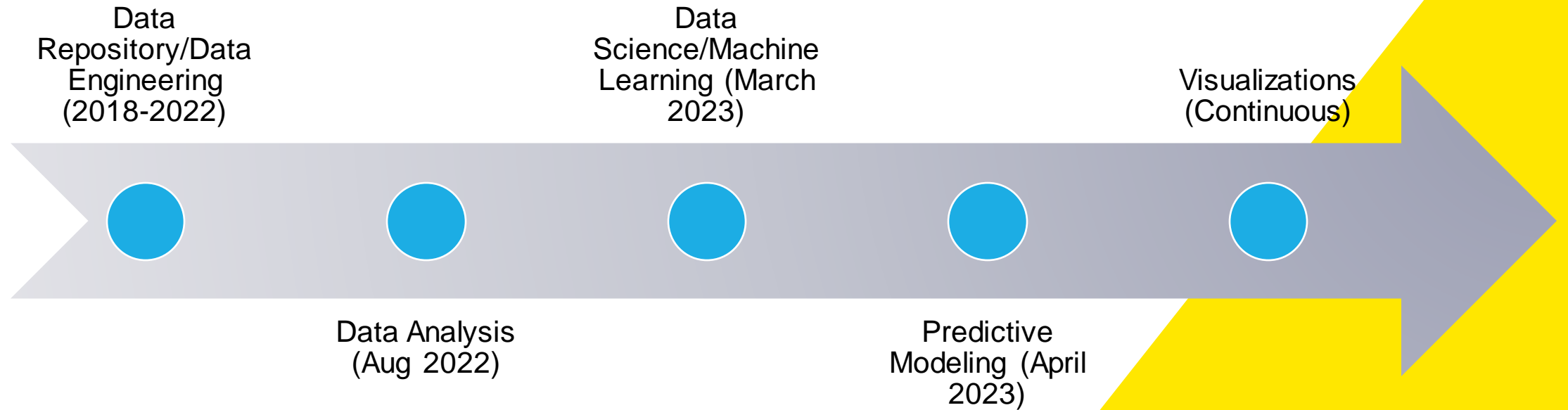
DOT Smart Data Platform Initiatives

June 2022

Current Status

- DOT internal data analytics **automated processes**
- **Secure pipelines** to migrate data to the UrbanLogiq's Data Repository
- UrbanLogiq's **core functional layers** completed
- Planning Department Phase 1 – **Key Performance Indicators**
- Vision Zero Phase 1 - “**Use-Cases**” and Outputs

Data Platform Timeline



Data Repository (Storing Data)



```
graph TD; A[Data Repository (Storing Data)] --> B[Data Engineering (Normalizing Data)]; B --> C[Data Science (Machine Learning)]; C --> D[Predictions (Intelligence)]; D --> E[Visualizations & Outputs (Decisions)];
```

Data Engineering (Normalizing Data)

Data Science (Machine Learning)

Predictions (Intelligence)

Visualizations & Outputs (Decisions)

Traffic Safety/Vision Zero



EquityS Projects AllocatedBudget

Status

of Projects



All

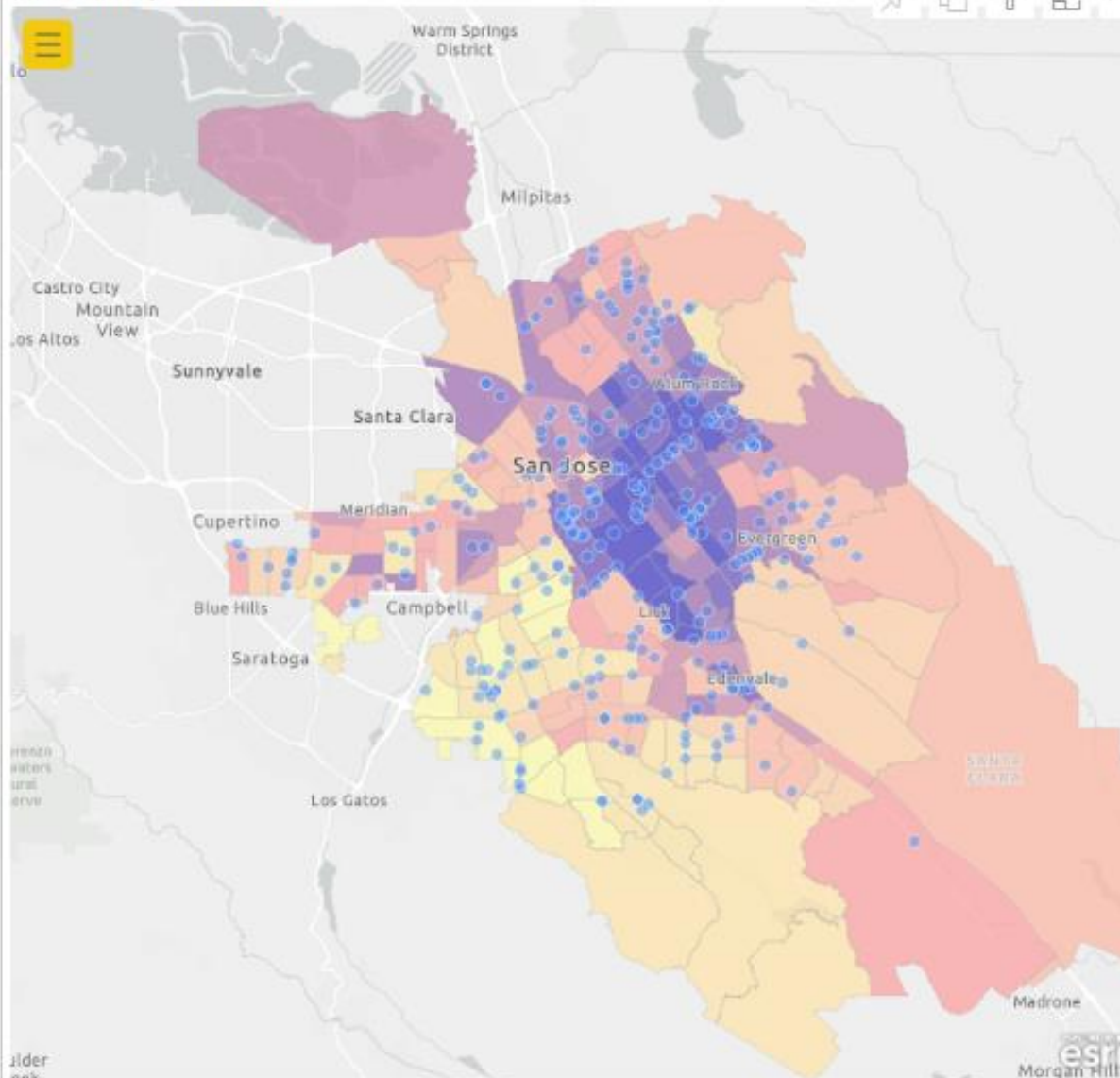
Traffic Safety

Local Projects

Signals

Options

Rail



10	31	\$1,643,310
9	43	\$469,500
8	39	\$784,451
7	44	\$365,000
6	17	\$360,000
5	31	\$200,000
4	18	\$170,000
3	43	\$2,097,000
2	19	\$45,000
Total	285	\$6,134,261

Project Name

19th St Buffered Bike Lane Enhancement - 19th / Julian
19th St Buffered Bike Lane Enhancement - 19th / St James
ACR 2018 - Winchester and Moorpark
Truncated Domes
Al Fresco Parklet - 13th/Vestal
ALAMEDA and MCKENDRIE ST
Allenwood Dr Cat Tracking

Safety Improvement

Bulb Outs (Detached)

Centerline

Chokers

Closure (Full)

Closure (Partial)

Delineators

Diverters

Edgeline

Flashing Beacons

Hardened Centerline

High-visibility Crosswalk

Leading Pedestrian Interval

Median

Painted Islands

Radar Speed Display Signs

Raised Island Markers

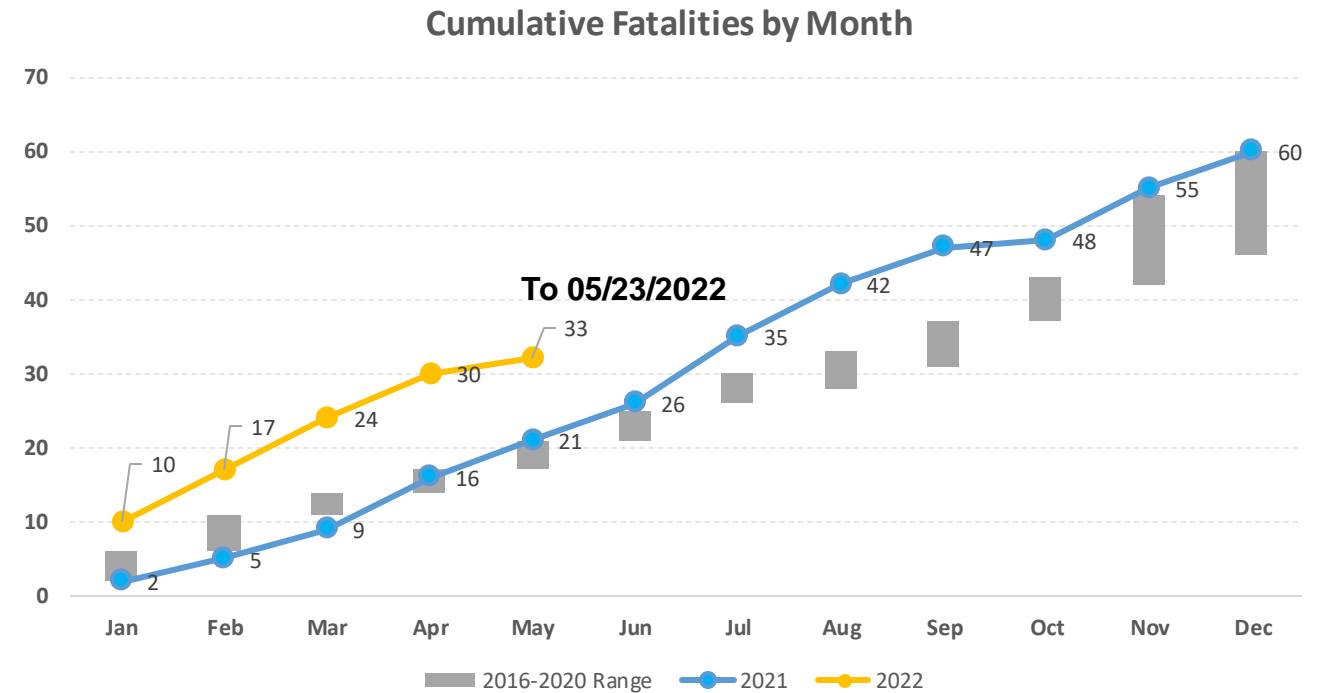
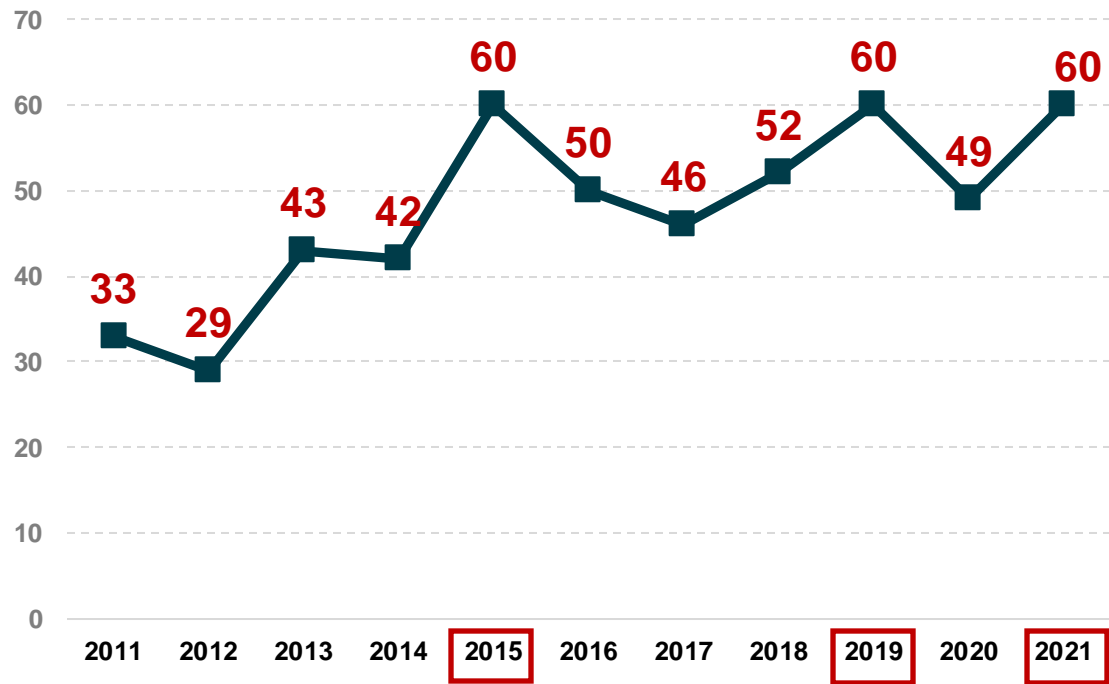




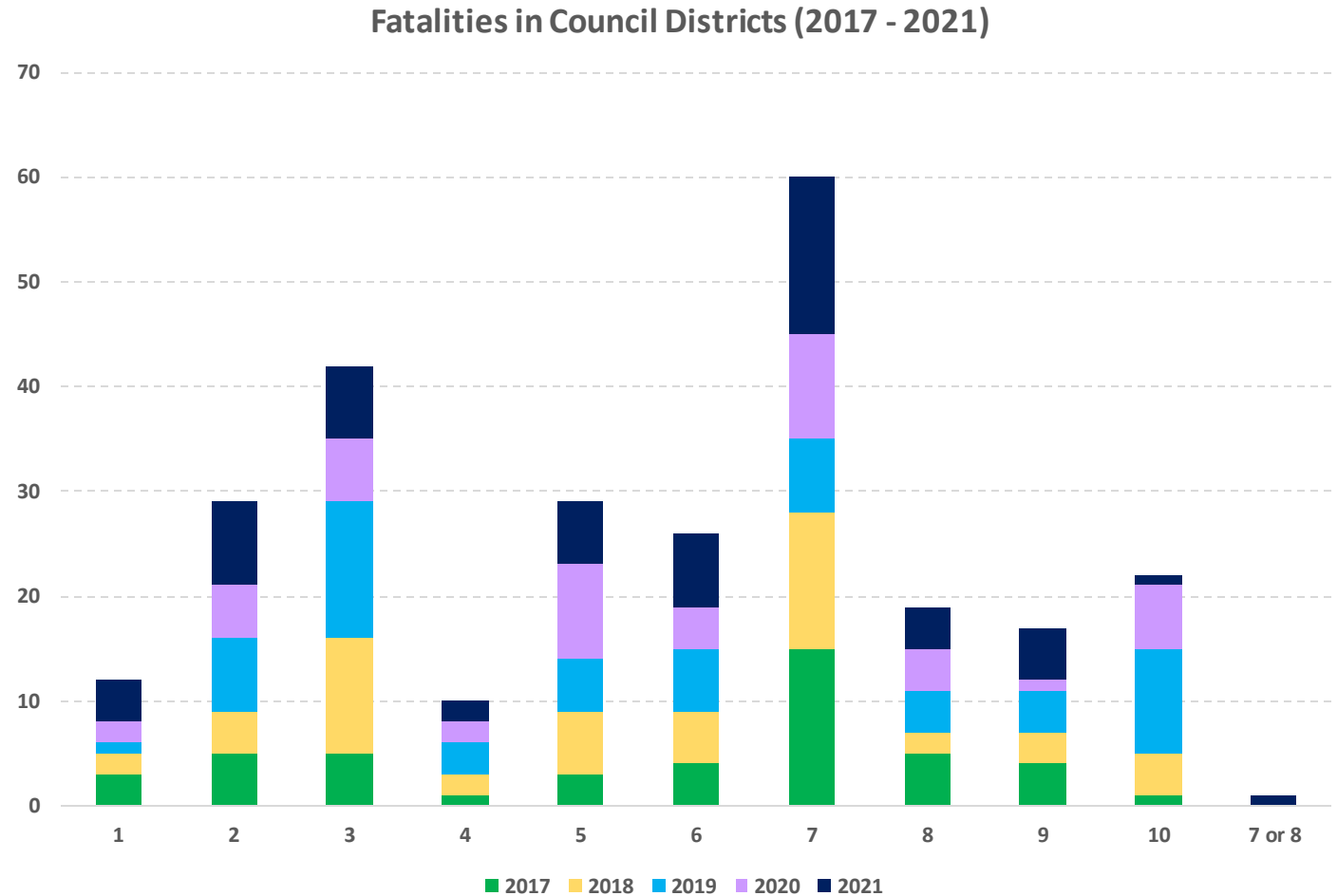
Vision Zero Data Initiatives

June 2022

San José Traffic Fatalities



Traffic Fatalities by Council District



* Due to lack of exact Area of Impact (AOI), unable to determine on which district the crashed occurred.

Council District: San José Equity Atlas

San Jose Equity Atlas [Beta]

Race Income **Combined Score** Redlining

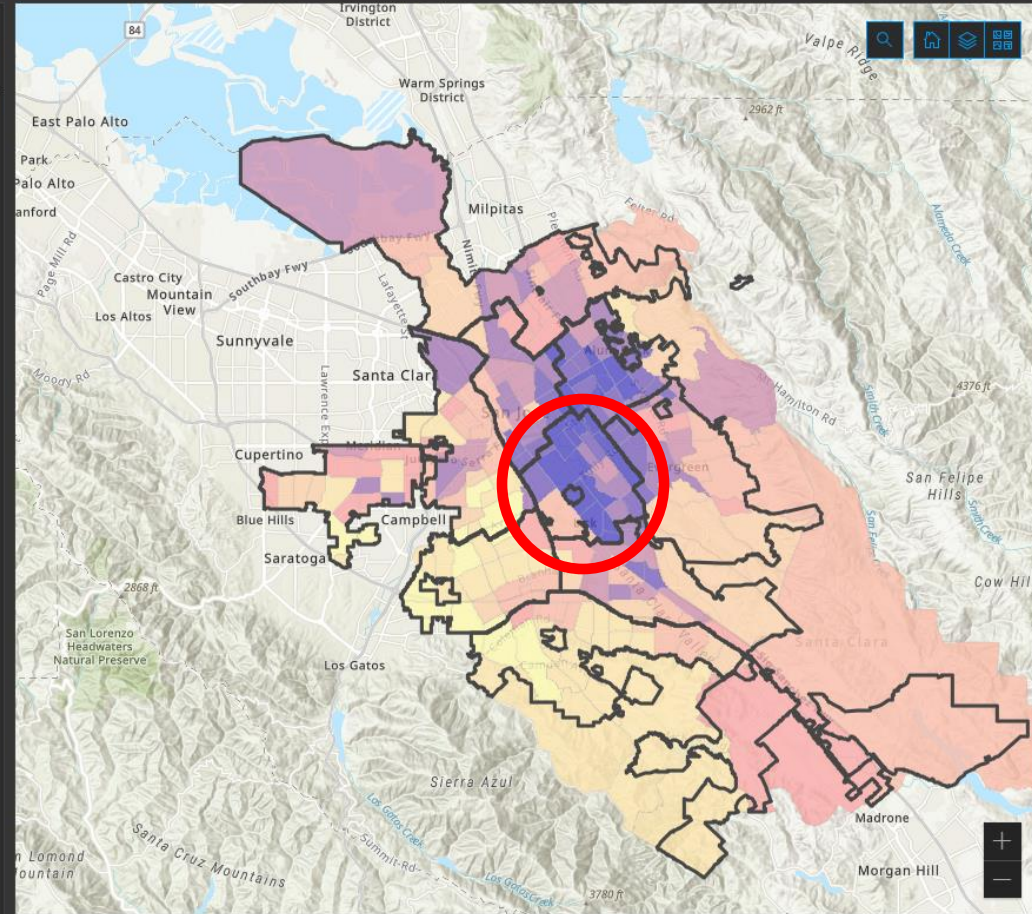
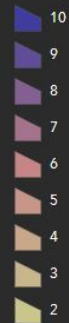
COMBINED SCORE

The combined score (range from 2 to 10) of the race and income tabs indicate that the higher the number, the higher the concentration of both people of color and low income households in the selected census tract.

Census Tract Scores

BIPOC and Income Combined

Combined Score



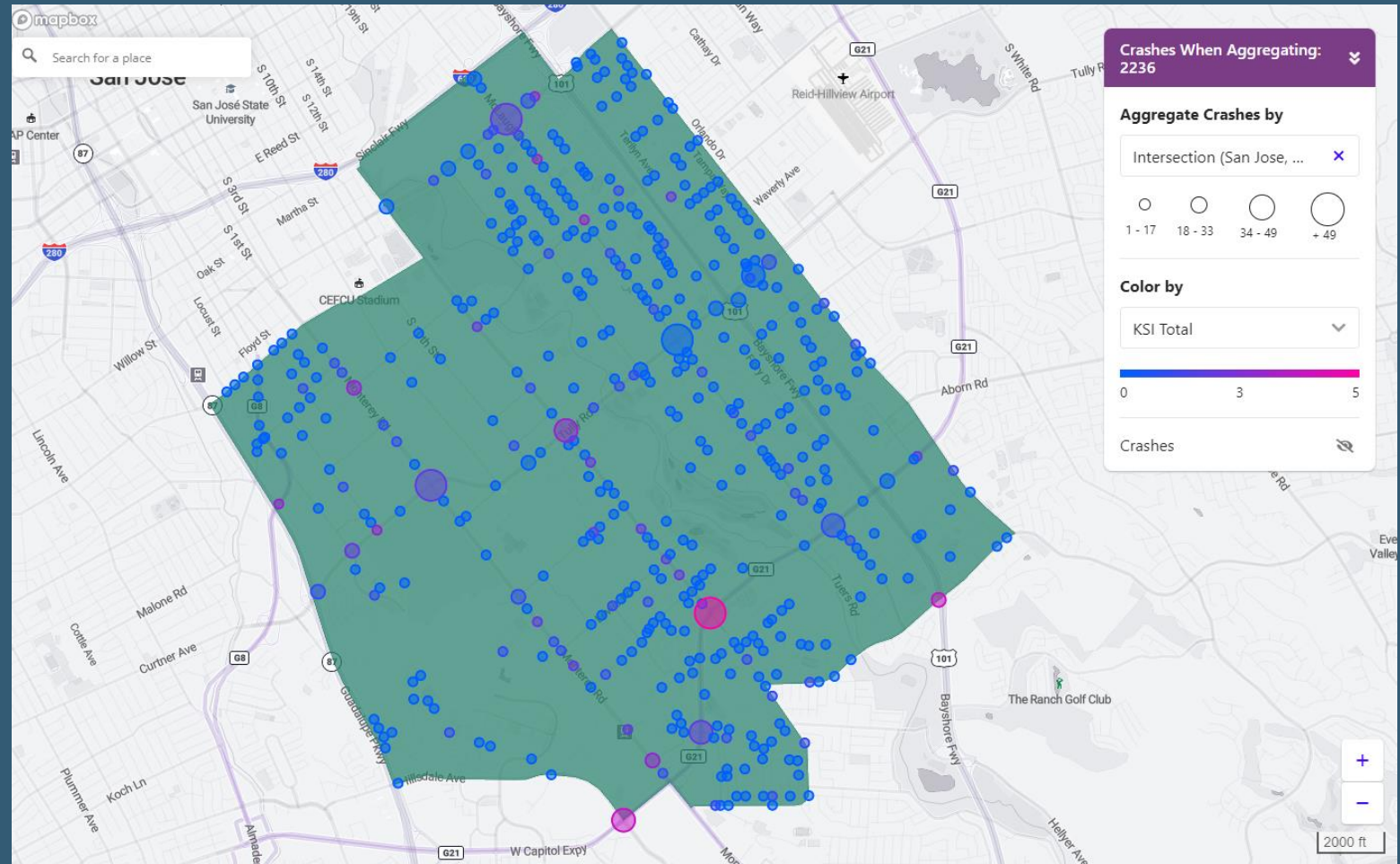
Esri, NASA, NGA, USGS | County of Santa Clara, California State Parks, Esri, HERE, Garmin, SafeGraph, METI/NASA, USGS, Bureau of Land ... Powered by Esri

UrbanLogiq

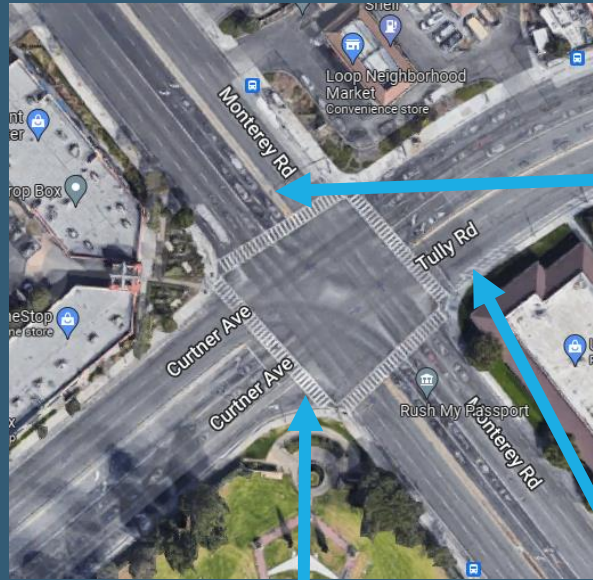
Map: Project Prioritization in District 7

UrbanLogiq search:

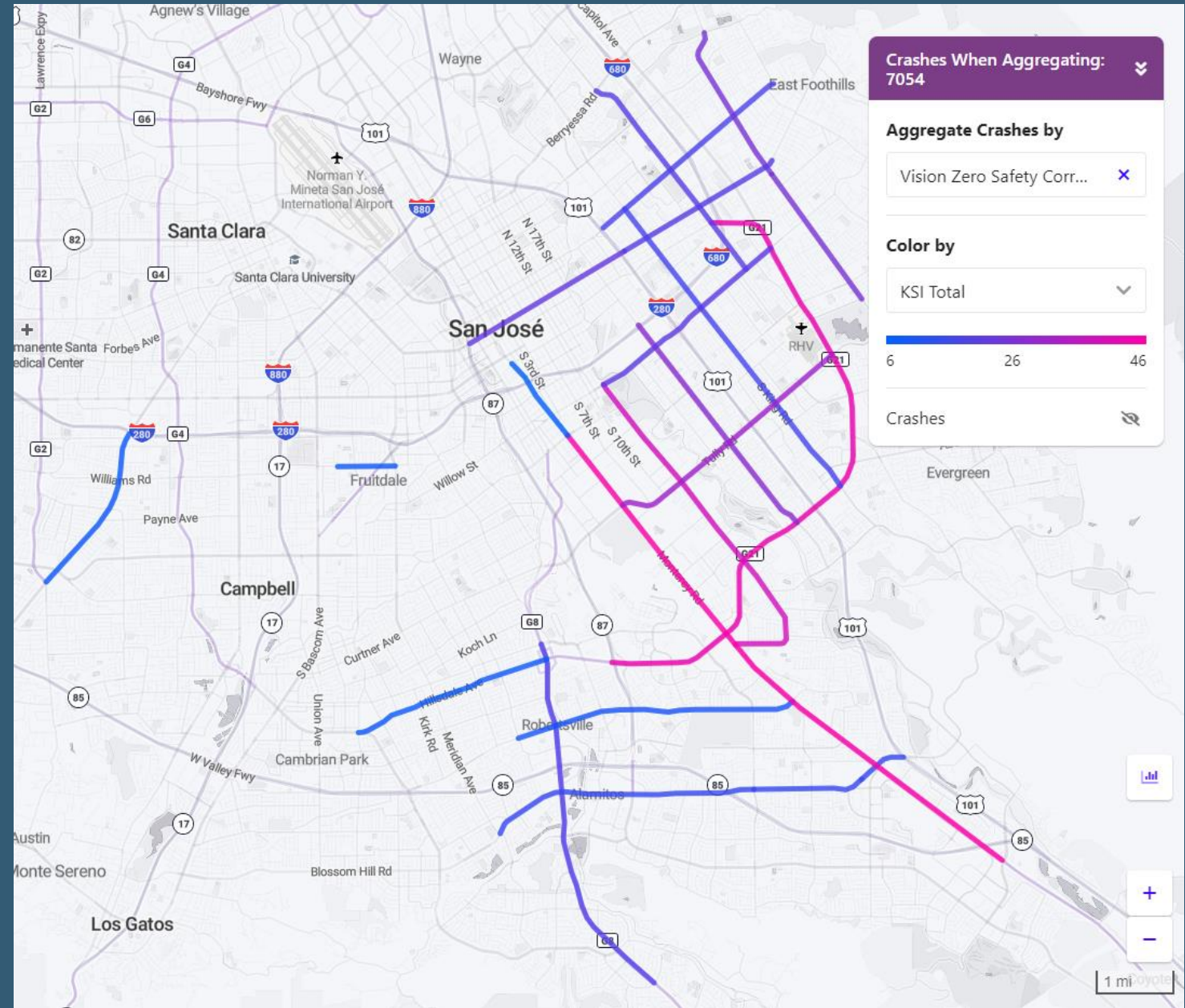
- Crashes 2016-2020
- District: 7
- Crashes aggregated by: intersection
- Color by: Count of Killed or Severely Injured (KSI)



Example Project: Quick Build Monterey at Curtner/Tully (2022) (D7)



UrbanLogiq: Map of Priority Safety Corridors with Count of People Killed or Severely Injured (KSI) in Traffic



UrbanLogiq: List of Priority Safety Corridors with Count of People Killed or Severely Injured (KSI) in Traffic

KSI Count by Safety Corridor (Top 10)



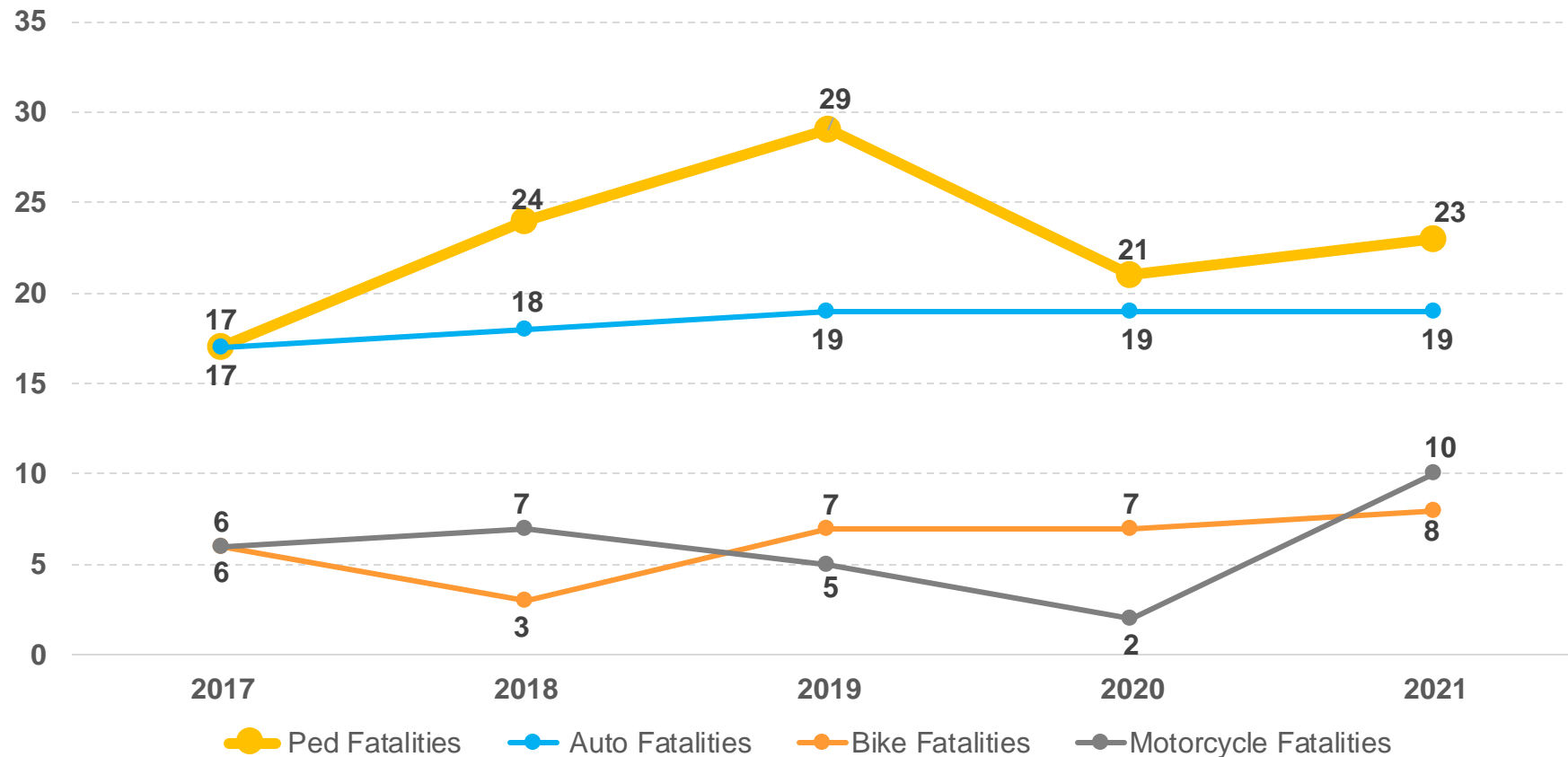
Monterey Road between Alma Ave and Bernal Road	46
Capitol Expressway between Route 680 and Route 87	44
Senter Road between Story Road and Monterey Road	40
Tully Road between Monterey Road and Capitol Expwy	32
McLaughlin Ave between I-680 and Capitol Expwy	28
White Road between Penitencia Creek Road and Cunningham Ave	25
Santa Clara St between Rte 101 and Hwy 87	22

2021 insights: Where are people getting injured while walking in darkness?

2021: 60 Traffic Fatalities (58 crashes) in San José

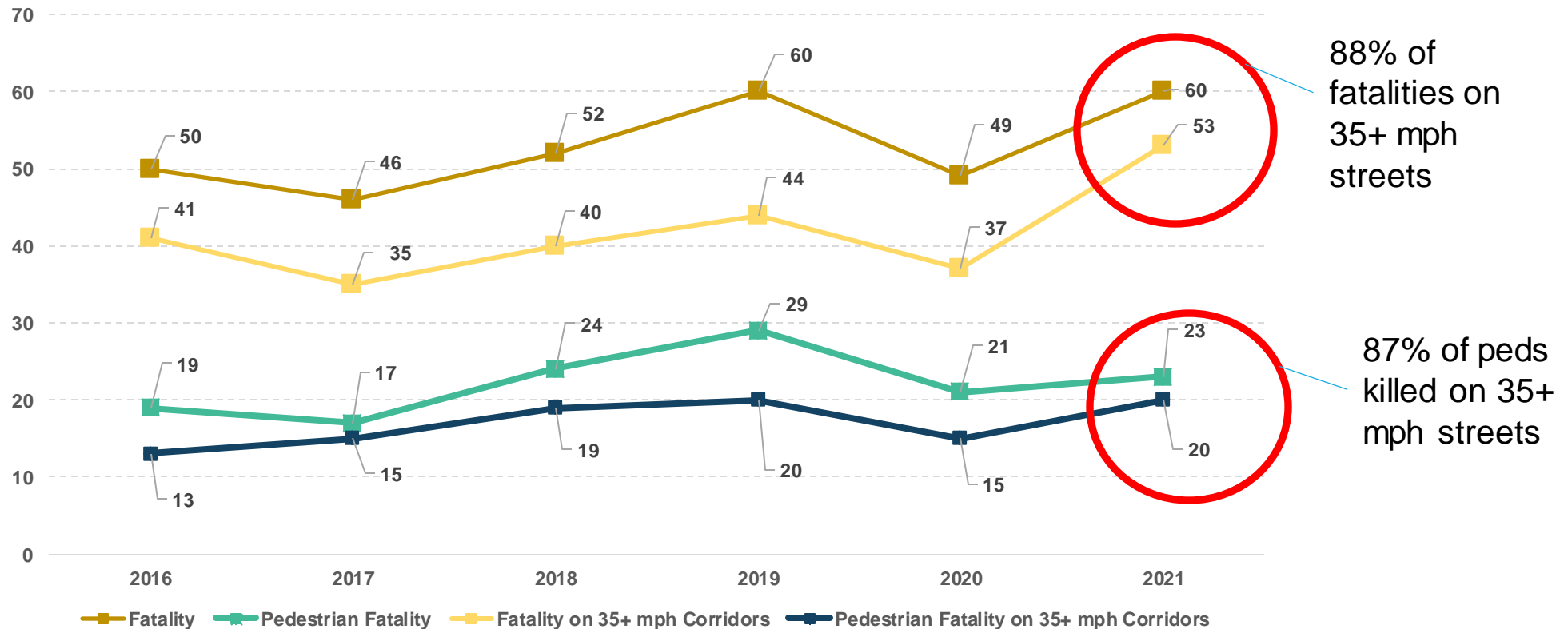
- 29 (48%) - on Priority Safety Corridors
- 7 (12%) - on Monterey Road
- 18 (30%) - Unhoused
- 42 (70%) - in darkness
- 10 (17%) - motorcycle
- 23 (38%) - people walking
 - → 18 (78%) in darkness
- 44 (73%) - male driver
- 18 (30%) - with speeding as a factor

People killed while walking are the largest fatality group by road user type: 114 of 267 (2017-2021)

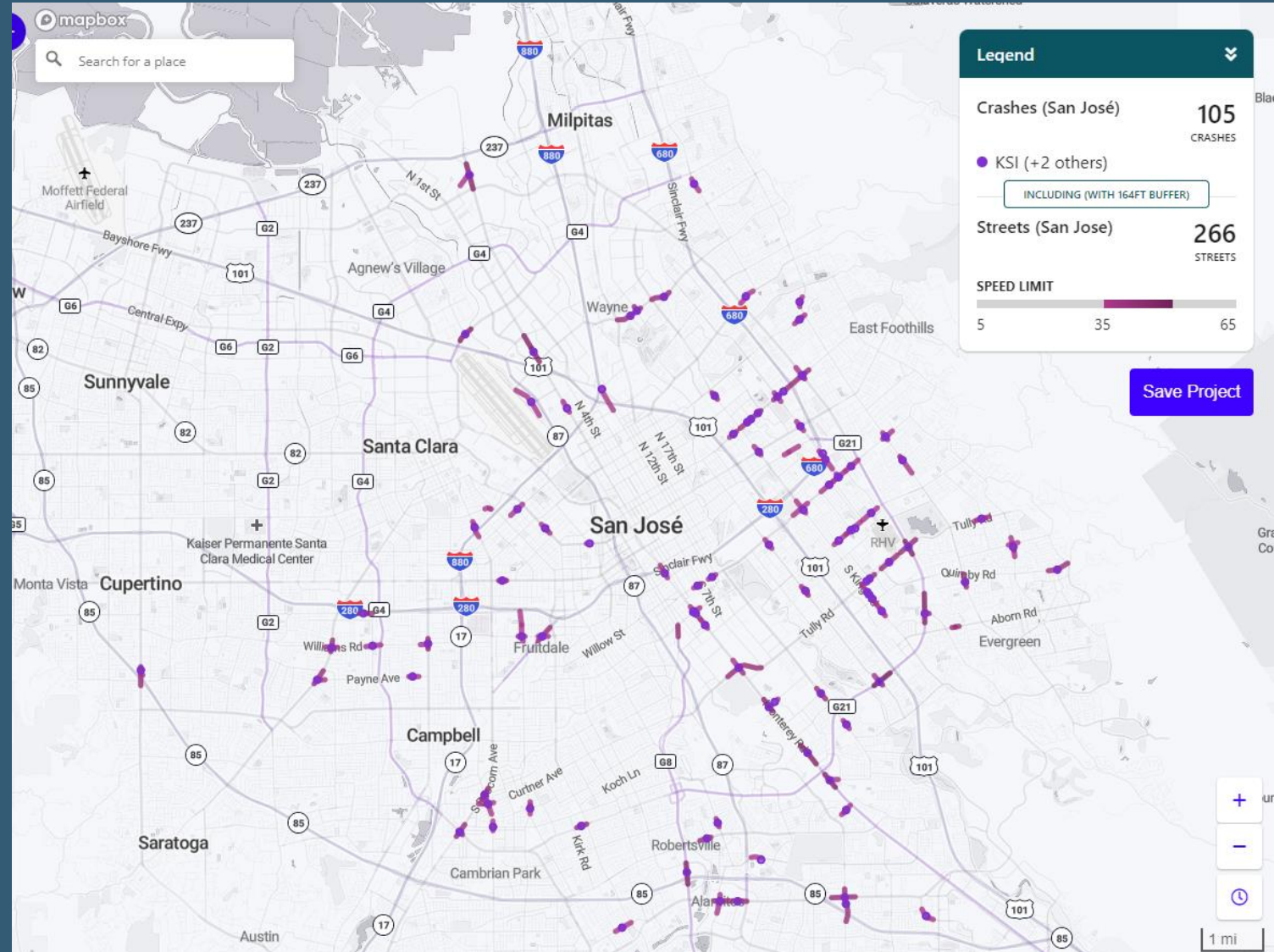


Up to 88% of annual Traffic Fatalities occur on roads with posted 35 to 50 mph speed limits

All Traffic Fatalities vs. Traffic Fatalities on 35+ mph Corridors
All Pedestrian Fatalities vs. Pedestrian Fatalities on 35+ mph Corridors



UrbanLoqiq: Map of fatal and severe injuries involving people walking on roads with posted speed limits of 35-50 mph



Team Slide

Here's what we look like and what we do



Vince Pereira
Manager
DOT IT



Jesse Mintz-Roth
Manager
Vision Zero



Thao Nguyen
Data Manager
Vision Zero



William Harmon
GIS Analyst
DOT IT



Herman Chandi
Co-Founder,
Urban Logiq



Questions and Feedback!