

Council Policy 5-1 Update

T&E May 2, 2022

Ramses Madou
Division Manager
Planning, Policy, and Sustainability
DOT

Nick Frey
Transportation Specialist
DOT

Council Policy 5-1: Transportation Analysis

- ▶ Adopted February 2018;
- ▶ Established Vehicle Miles Traveled (VMT) in Transportation Analysis as San Jose's CEQA metric for transportation, removing Level of Service (LOS);
- ▶ Aligned City CEQA rules with state requirements (SB 743);
- ▶ Focuses on Regional Level Impacts – Environmental, Public Health, and Access;
- ▶ Promotes Infill Development near Transit.

VMT Policy Update

Further Promote Housing Production

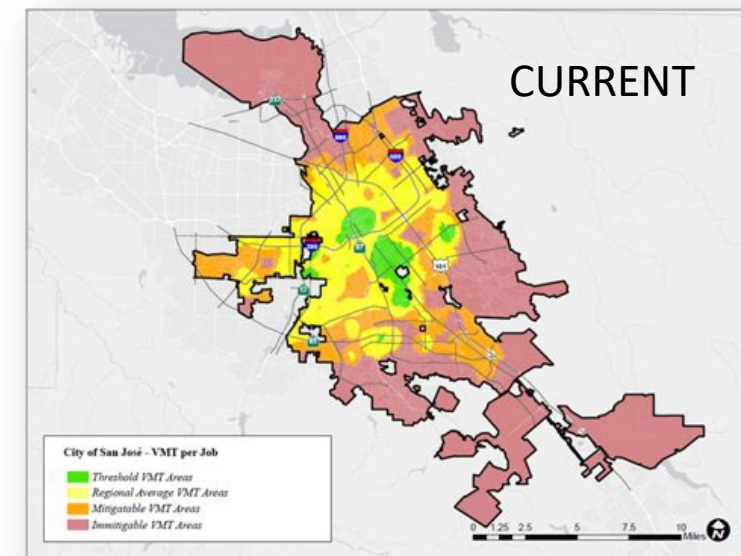
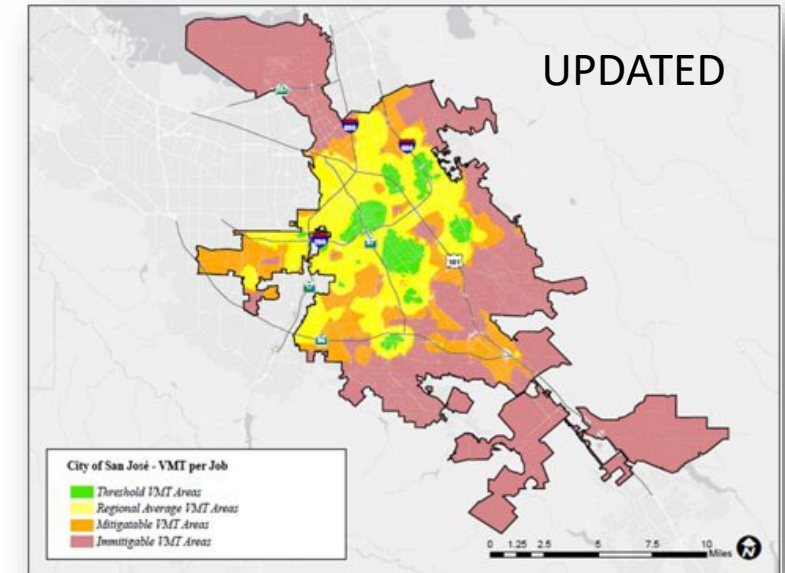
- ▶ Streamline CEQA for more market-rate housing and commercial near transit.
- ▶ Allow all housing projects aligned with the land use policies of the General Plan to be considered for a statement of Significant and Unavoidable Impacts.

Further Promote Affordable Housing

- ▶ Streamline CEQA for more 100% affordable housing.
- ▶ Update screening criteria to allow more affordable housing in high resource areas.

Update and Integrate Maps

- ▶ Update baseline VMT calculations based on recently available land use and transportation data.
- ▶ Adopt Countywide VMT calculator, developed by VTA based on the City's calculator and adopted by neighboring jurisdictions.

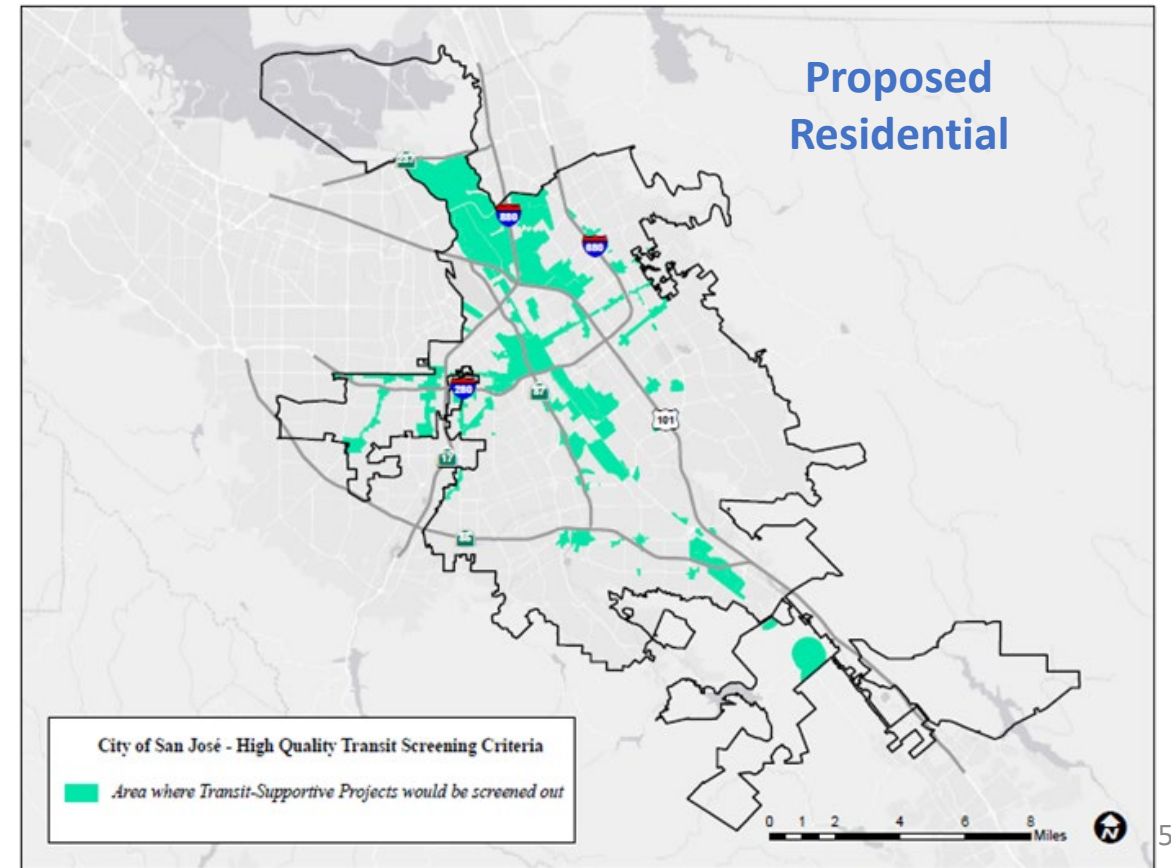
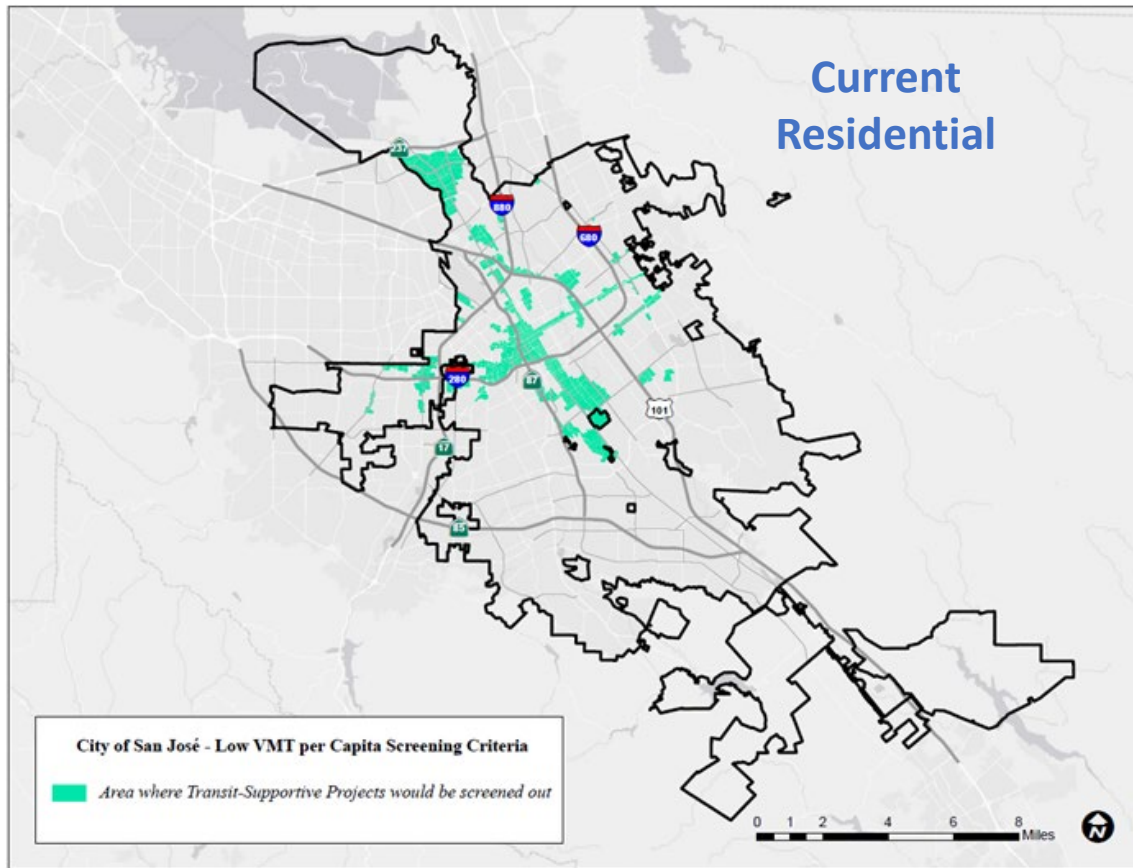


Current Streamlined Projects

- ▶ Small Infill Projects;
- ▶ Local-Serving Retail;
- ▶ Local-Serving Public Facilities;
- ▶ *Transit Supportive Projects in Planned Growth Areas with Low VMT and High Quality Transit;*
- ▶ *Restricted Affordable, Transit Supportive Residential Projects in Planned Growth Areas with High Quality Transit;*
- ▶ Transportation Projects that reduce or do not increase VMT.

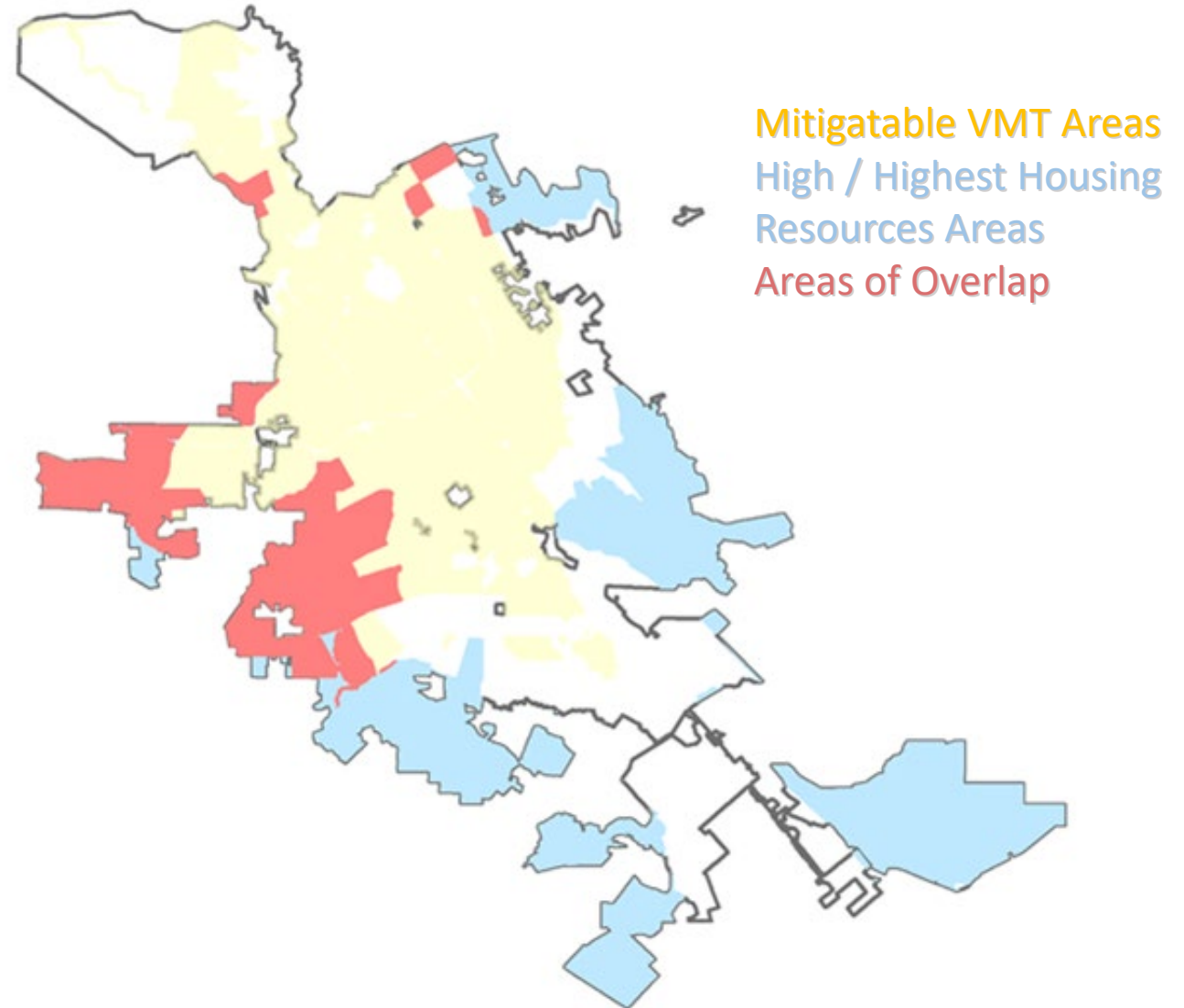
Promote Housing Production

- ▶ Transit Supportive Projects in Planned Growth Areas ~~with Low VMT~~ and High Quality Transit.



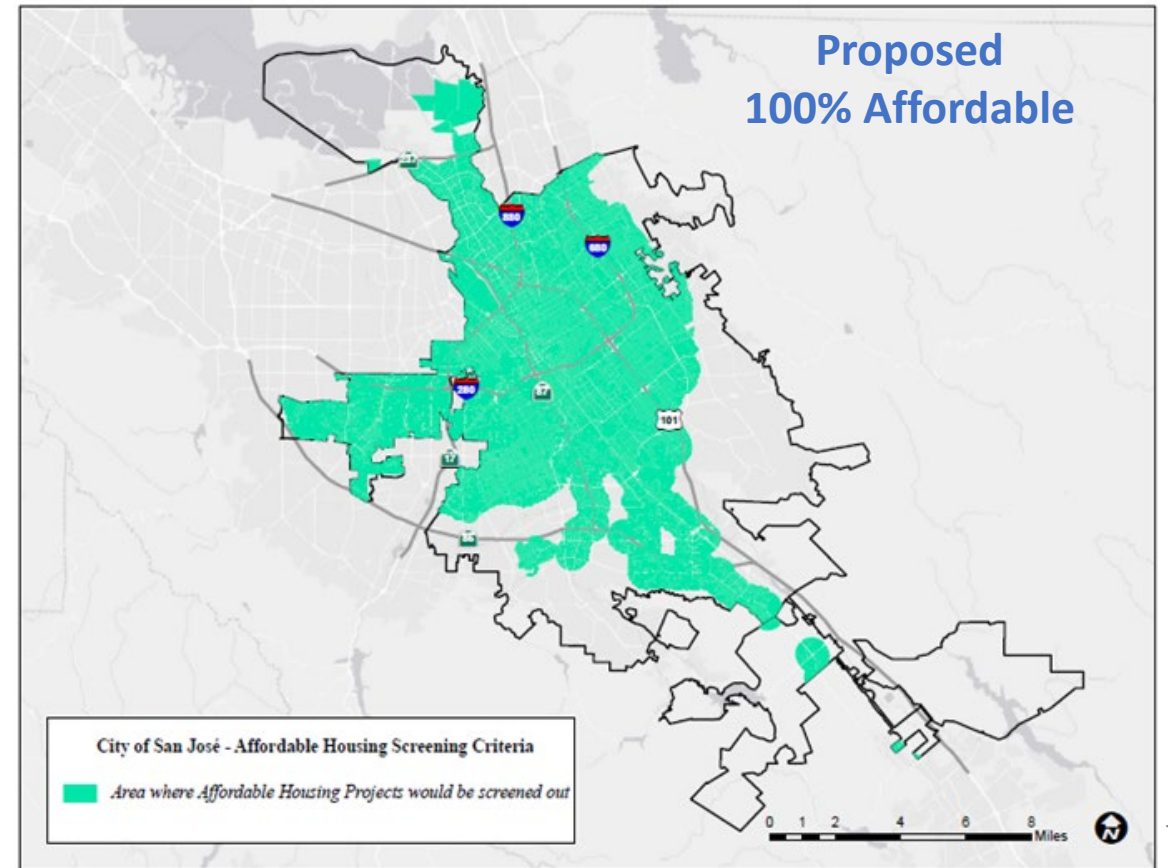
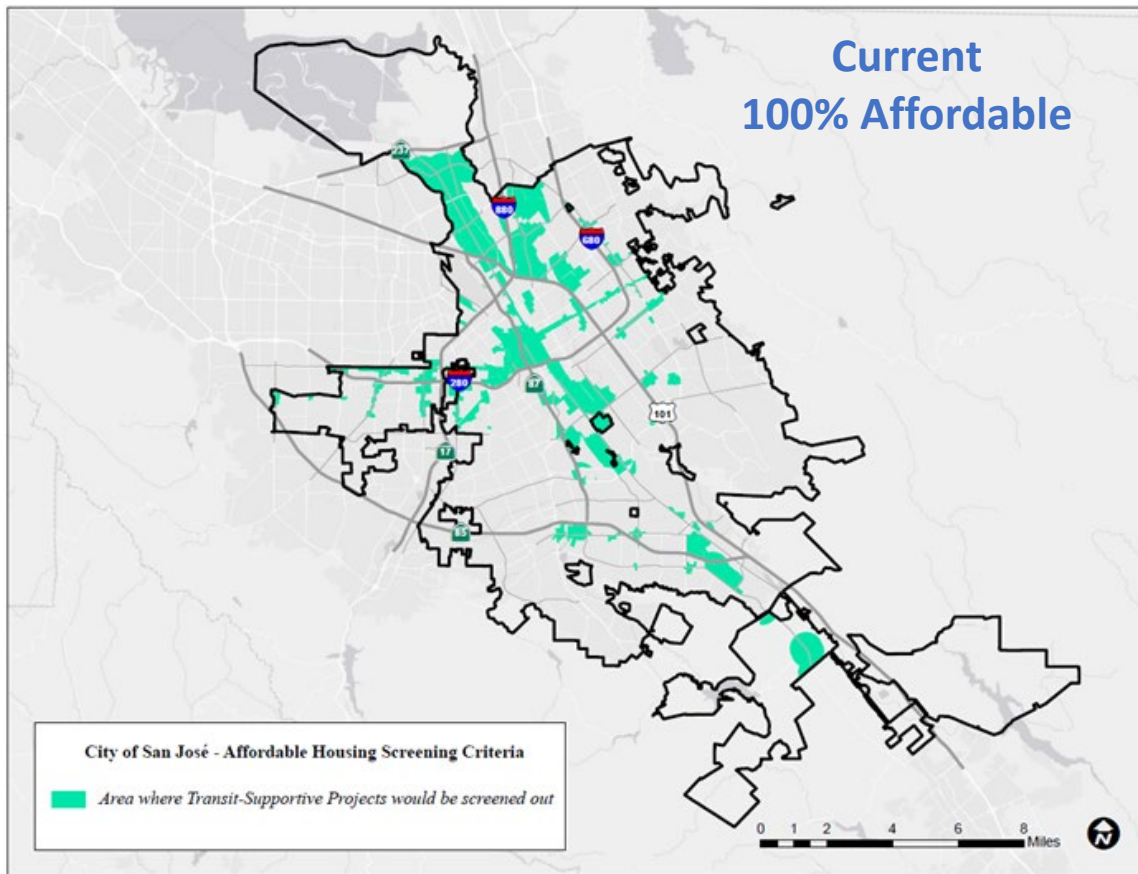
Affordable Housing and Resources Areas: Equity Analysis

- ▶ Policy 5-1 aims to reduce the City's environmental footprint from land use development by incentivizing growth in Low VMT areas
- ▶ High/Highest Housing Resource Areas in San José are located in high VMT neighborhoods, with a narrower path under existing Policy 5-1 for residential development



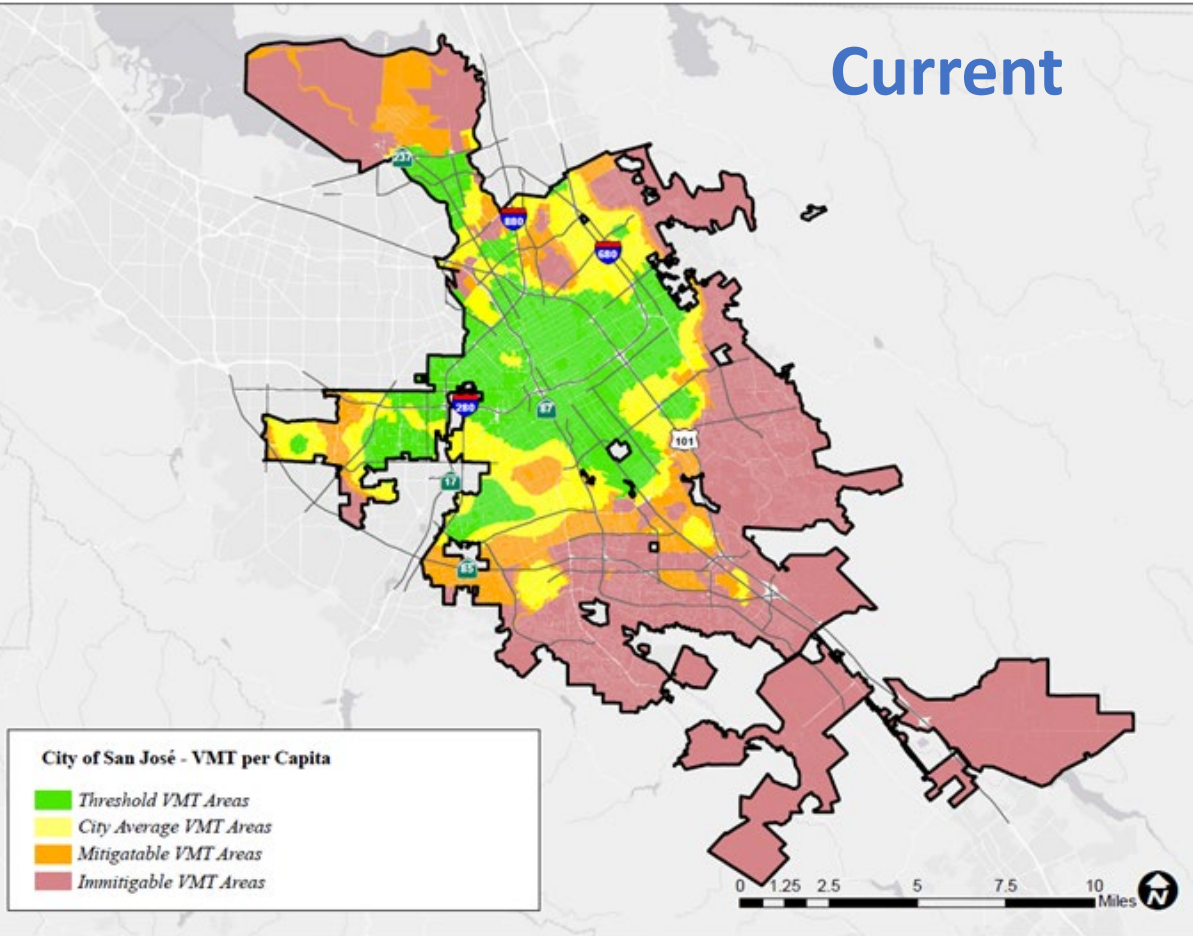
Promote Affordable Housing Production

- ▶ Restricted Affordable, Transit Supportive Residential Projects in ~~Planned Growth Areas~~ with High Quality Transit;
- ▶ Areas of the City outside of Urban Villages are open Affordable Housing

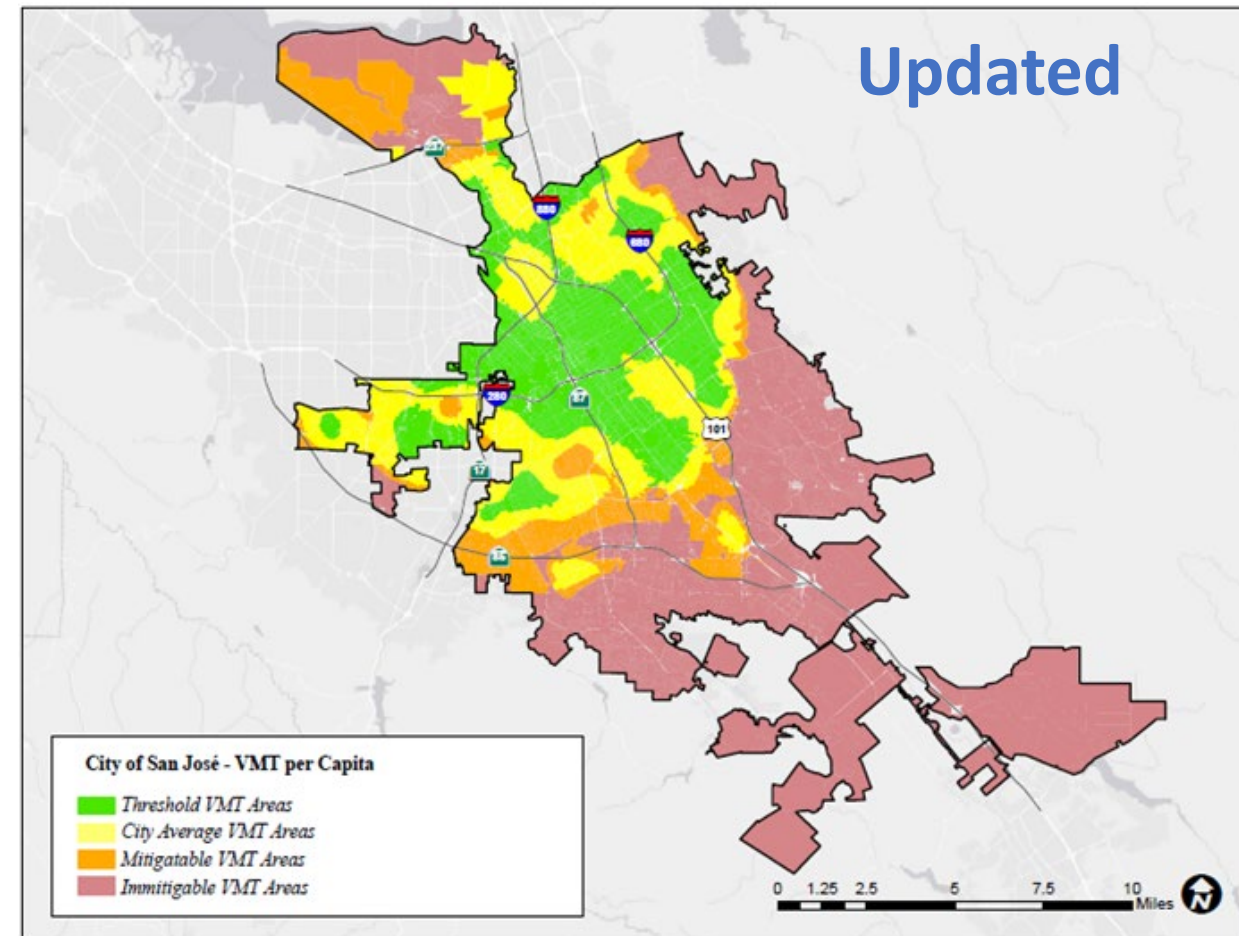


Update Maps VMT per Resident

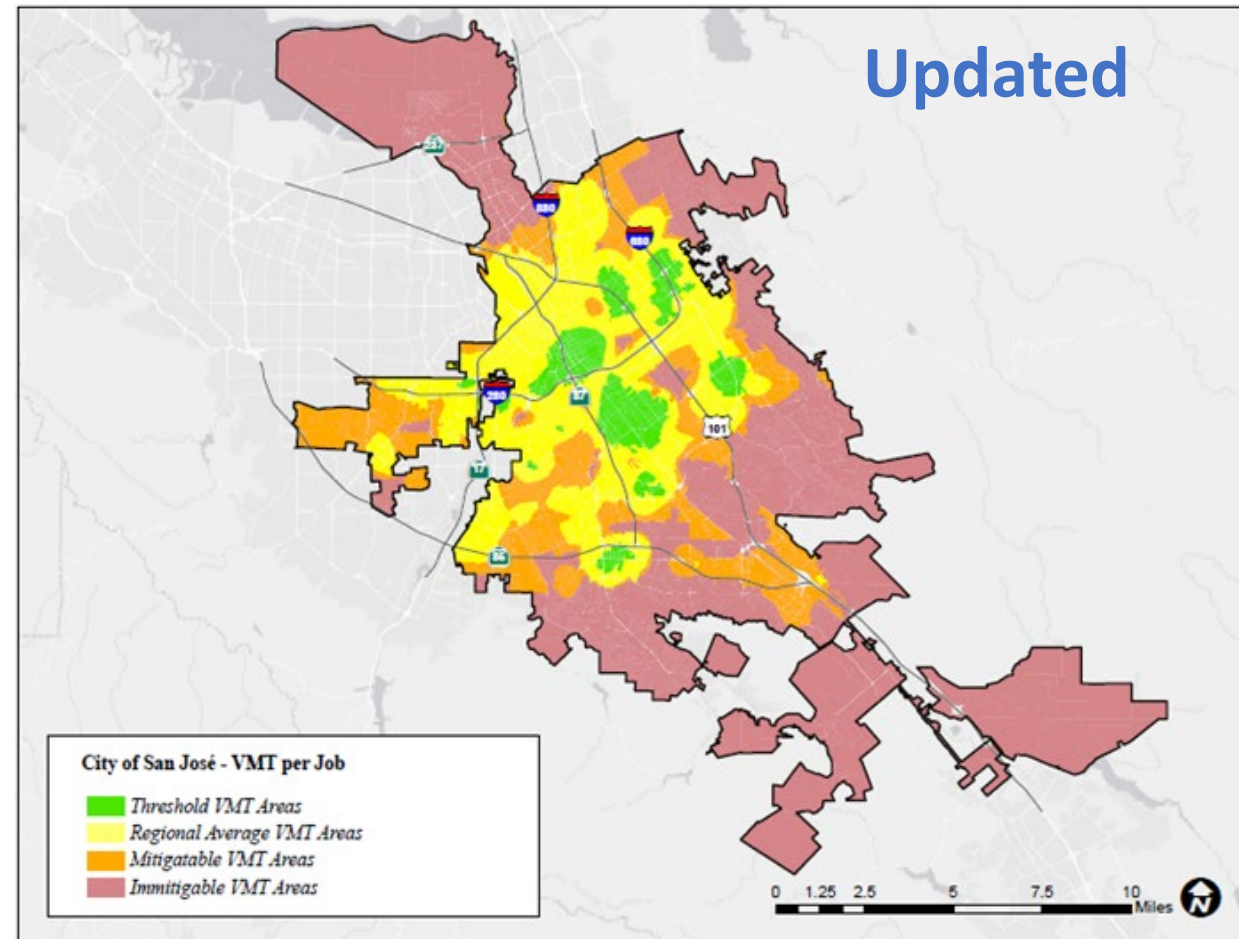
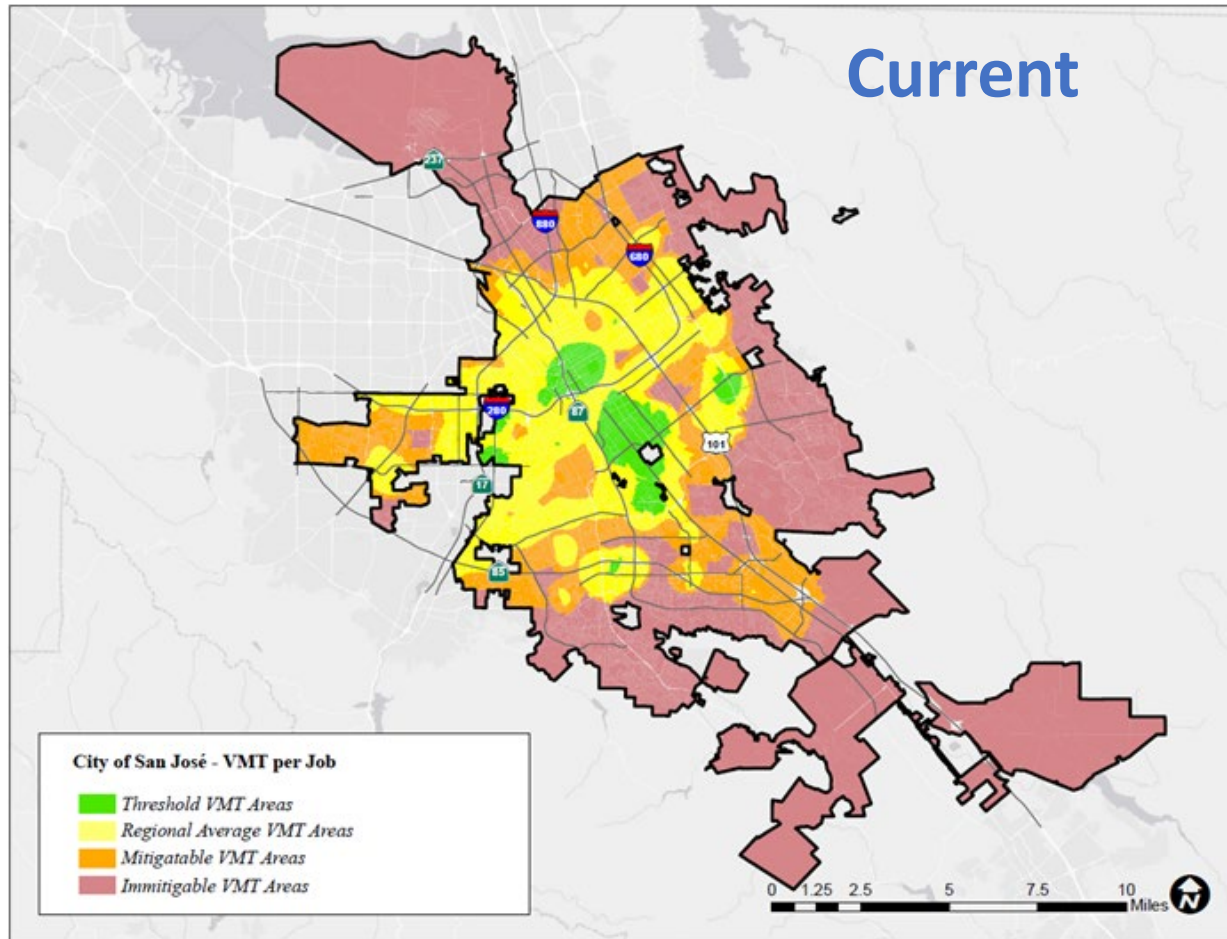
Current



Updated




Update Maps VMT per Job




Integrate Maps: VMT Tool


- ▶ Recommendation: phase out San Jose's VMT Evaluation Tool and adopt the VTA Countywide VMT Evaluation Tool to assess a project's potential VMT based on the project's description, location, and attributes.


 Valley Transportation Authority

Santa Clara Countywide VMT Evaluation Tool - Version 2


[USER AGREEMENT](#) [REPORT A PROBLEM/FEEDBACK](#)


Add


Remove


Clear Selection

OR





Selected APNs

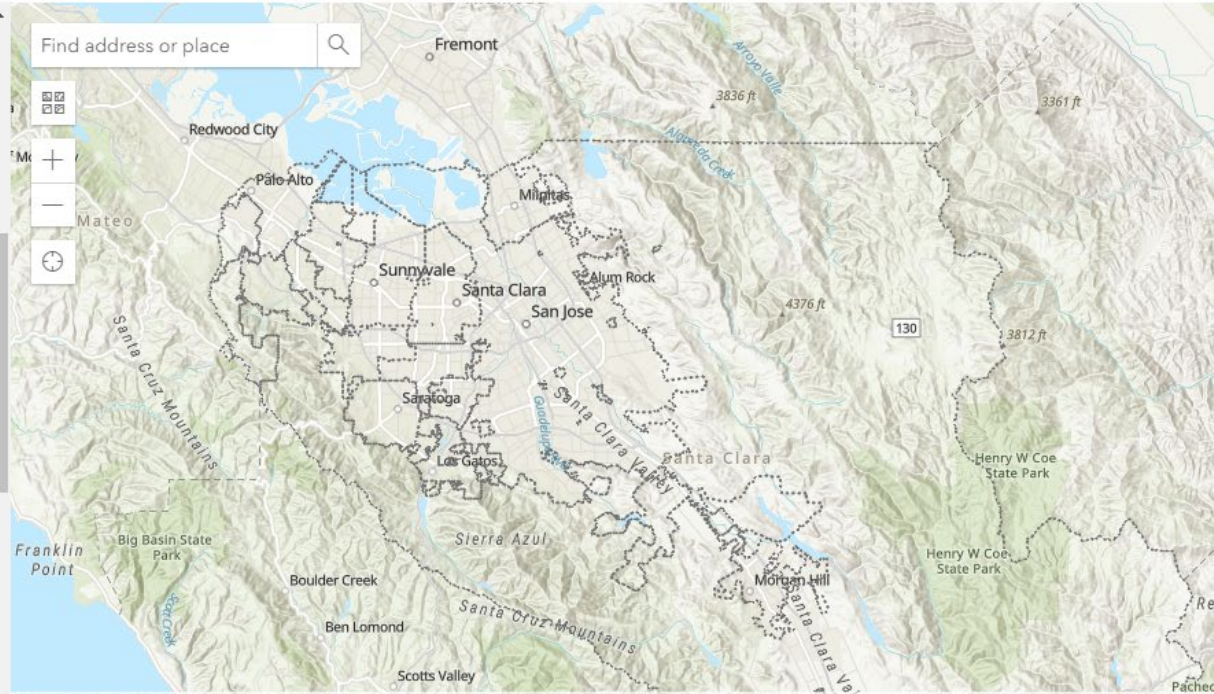
Enrich Map with Layers

Turn layers on and off and adjust visibility to aid in project parcel selection.

<input checked="" type="checkbox"/>	Parcels (Zoom to view)	100%	+
<input checked="" type="checkbox"/>	TAZs (Zoom to view)	100%	+
<input checked="" type="checkbox"/>	Rail Stations (Zoom to view)	100%	+
<input checked="" type="checkbox"/>	Rail Line (Zoom to view)	100%	+
<input checked="" type="checkbox"/>	Freq Bus Stops (Zoom to view)	49%	+







Esri, CGIAR, USGS | County of Santa Clara, Esri, HERE, Garmin, SafeGraph, FAO, METI/NASA, USGS, Bureau of Land Management, EPA, NPS. Powered by Esri

Council Policy 5-1 Update

Further Promote Housing Production

- ▶ Streamline CEQA for more market-rate housing and commercial near transit.
- ▶ Allow all housing projects aligned with the land use policies of the General Plan to be considered for a statement of Significant and Unavoidable Impacts.

Further Promote Affordable Housing

- ▶ Streamline CEQA for more 100% affordable housing.
- ▶ Update screening criteria to allow more affordable housing in high resource areas.

Update and Integrate Maps

- ▶ Update baseline VMT calculations based on recently available land use and transportation data.
- ▶ Adopt Countywide VMT calculator, developed by VTA based on the City's calculator and adopted by neighboring jurisdictions.

Ramses Madou
Division Manager
Planning, Policy, and Sustainability
DOT

Nick Frey
Transportation Specialist
DOT