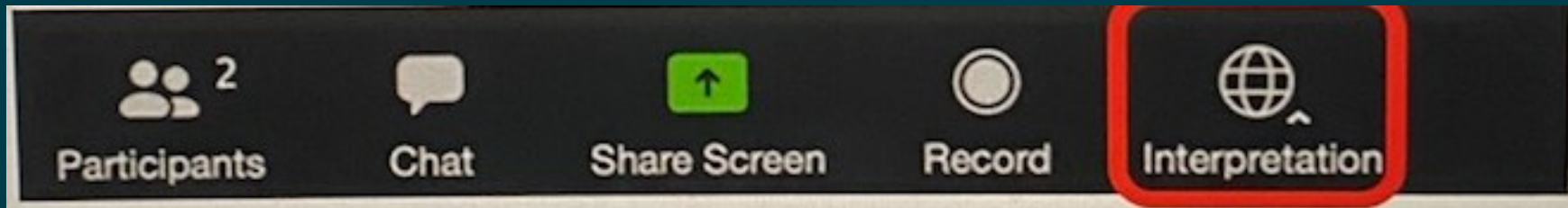


COVID-19 Recovery Task Force Meeting #10

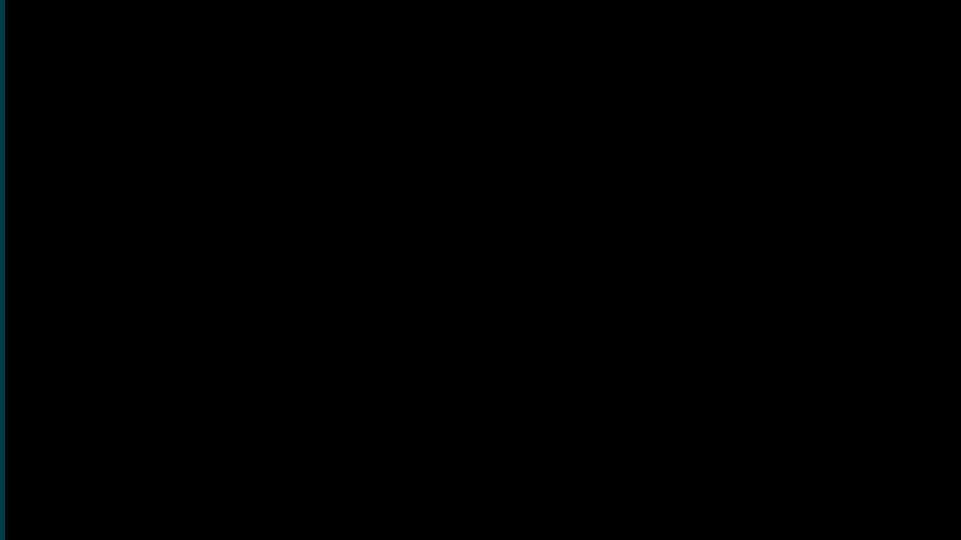
September 15, 2022
6:00 p.m.

How to Access Spanish Interpretation

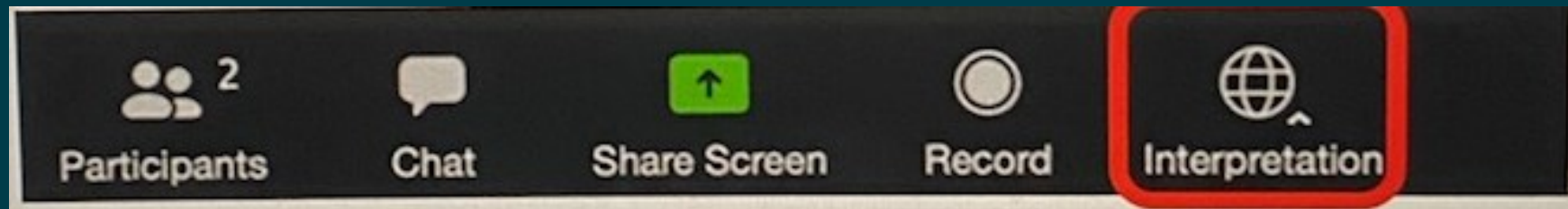
- ❑ La interpretación en simultáneo para esta reunión se dará en Español - bajo la opción Español
- ❑ Por favor haz clic en el icono INTERPRETATION en tu barra de herramientas para acceder al idioma deseado



How to Access Vietnamese Interpretation



- ❑ Việc giải thích đồng thời cho cuộc họp này sẽ được đưa ra bằng các ngôn ngữ sau: Tiếng Việt - theo tùy chọn tiếng Việt
- ❑ Vui lòng nhấp vào biểu tượng PHIÊN DỊCH trên thanh công cụ của bạn để truy cập ngôn ngữ mong muốn



Welcome and Acknowledgements

Today's Meeting Agenda

- ❑ Welcome
- ❑ Task Force Updates
- ❑ Community Engagement Plan Report
- ❑ Breakout Group Discussion
- ❑ Public Comment
- ❑ Next Steps
- ❑ Adjourn

COVID-19 Recovery Task Force Updates

August 20 Community Resource Fair a Success



Task Force Updates

- ❑ Schedule for remaining Task Force meetings:
 - ❑ Tonight: Community Engagement Plan Report
 - ❑ October 13th: Review draft recommendations
 - ❑ November 10th: Finalize recommendations/report
 - ❑ December: Presentation to City Council
- ❑ Task Force Member Announcements

Community Engagement Plan Report

Task Force-approved Community Engagement Plan

**Community
Survey**

**COVID-19
Recovery
Report and
Survey
Consolidation**

**Storytelling
Project**

**Engagement
Toolkit**

**Lived Experience
Group**

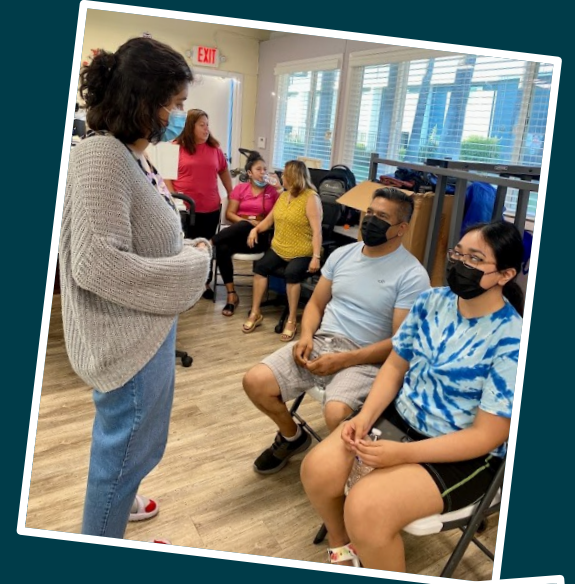
How We Engaged – Overall

- ❑ **771** people completed Community Survey
- ❑ **Nine** Lived Experience Group members
- ❑ **31** activities led by Lived Experience Group and Task Force:
 - ❑ 12 Community Pop Ups
 - ❑ 2 Community Forums
 - ❑ 16 Focus Groups
 - ❑ 1 Community Resource Fair
- ❑ **500** people in attendance at Community Resource Fair
- ❑ **1500** total people engaged via 31 in-person and virtual activities



Who we Engaged: Overall

- ❑ Small business owners
- ❑ Renters who have faced threat of eviction
- ❑ Unhoused residents
- ❑ Parents of people with disabilities; people with disabilities
- ❑ High school and college students
- ❑ Healthcare workers
- ❑ Parents with children under five years old
- ❑ Senior residents
- ❑ People who cared for and/or lost a loved one to COVID-19
- ❑ People with pre-existing health conditions
- ❑ Artists, cultural workers



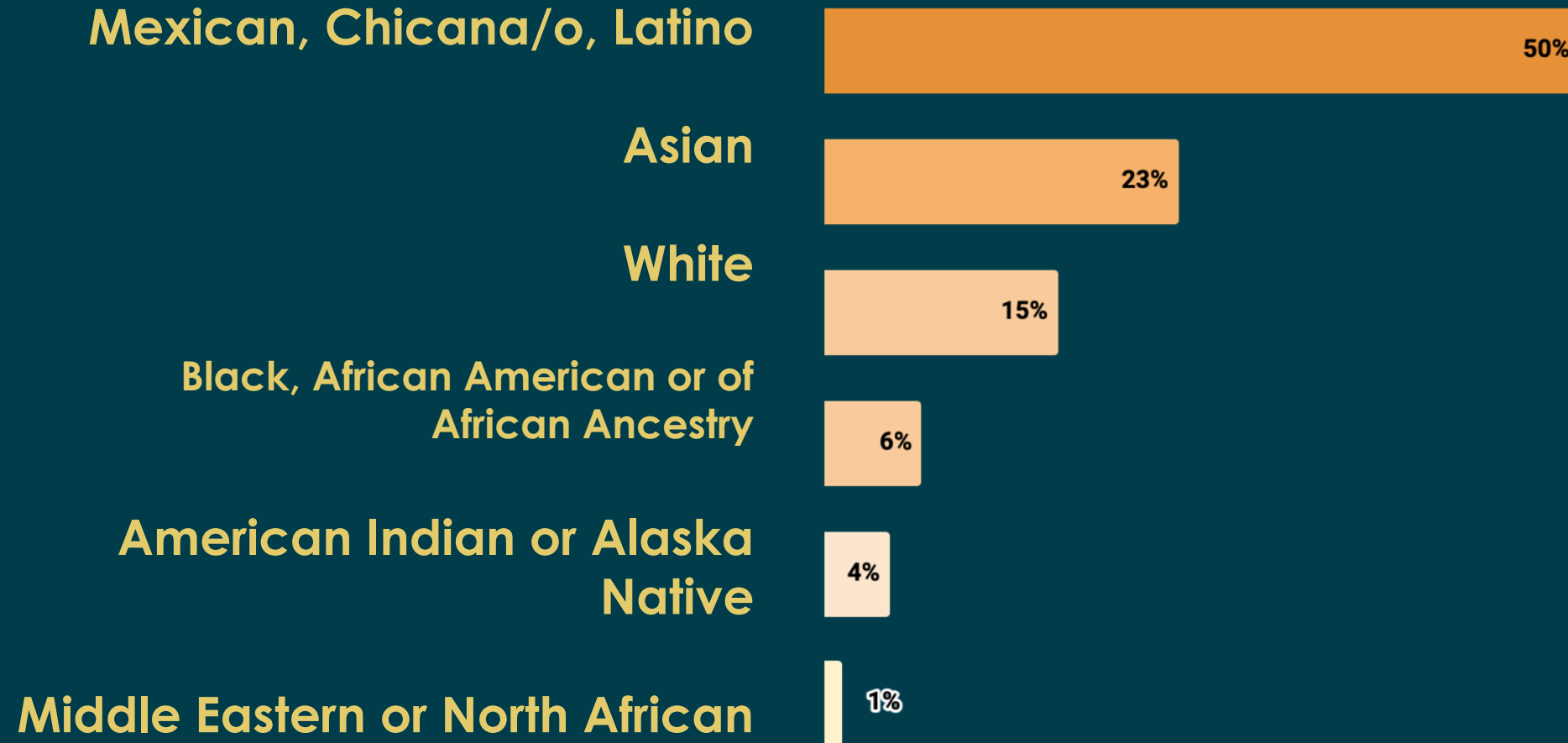
Community Survey Responses

Community Survey: 771 Respondents

- ❑ Residents, communities connected to Task Force and Lived Experience Group
- ❑ **38%** of the surveys were taken in another language – Spanish, Vietnamese, or Tagalog
- ❑ **74%** identified as women
- ❑ **6%** identified as non-binary or transgender
- ❑ **13%** identified as having a disability
- ❑ **10%** were 65 years of age and older
- ❑ **32%** had a household income of **under \$25,000**, and **80%** had a HH income of **less than \$85K**, which for a family of four would classify as **very low-income**
- ❑ **23% lost a loved one to COVID-19**



Community Survey: Race/Ethnicity



San José City Limits

Number of Responses

- 0 - 20
- 21 - 40
- 41 - 60
- 61 - 80
- 81 - 100
- 101 - 114

Map labels include: 94538, 95002, 94089, 95134, 95054, 95051, 95050, 95014, 95129, 95130, 95008, 95124, 95118, 95123, 95120, 95136, 95119, 95139, 95037, 95132, 95131, 95133, 95127, 95148, 95135, 95138, 95121, 95111, 95116, 95112, 95113, 95126, 95125, 95128, 95117, 95110, 95108, 95109, 95107, 95106, 95105, 95104, 95103, 95102, 95101, 95100, 95099, 95098, 95097, 95096, 95095, 95094, 95093, 95092, 95091, 95090, 95089, 95088, 95087, 95086, 95085, 95084, 95083, 95082, 95081, 95080, 95079, 95078, 95077, 95076, 95075, 95074, 95073, 95072, 95071, 95070, 95069, 95068, 95067, 95066, 95065, 95064, 95063, 95062, 95061, 95060, 95059, 95058, 95057, 95056, 95055, 95054, 95053, 95052, 95051, 95050, 95049, 95048, 95047, 95046, 95045, 95044, 95043, 95042, 95041, 95040, 95039, 95038, 95037, 95036, 95035, 95034, 95033, 95032, 95031, 95030, 95029, 95028, 95027, 95026, 95025, 95024, 95023, 95022, 95021, 95020, 95019, 95018, 95017, 95016, 95015, 95014, 95013, 95012, 95011, 95010, 95009, 95008, 95007, 95006, 95005, 95004, 95003, 95002, 95001, 95000, 94999, 94998, 94997, 94996, 94995, 94994, 94993, 94992, 94991, 94990, 94989, 94988, 94987, 94986, 94985, 94984, 94983, 94982, 94981, 94980, 94979, 94978, 94977, 94976, 94975, 94974, 94973, 94972, 94971, 94970, 94969, 94968, 94967, 94966, 94965, 94964, 94963, 94962, 94961, 94960, 94959, 94958, 94957, 94956, 94955, 94954, 94953, 94952, 94951, 94950, 94949, 94948, 94947, 94946, 94945, 94944, 94943, 94942, 94941, 94940, 94939, 94938, 94937, 94936, 94935, 94934, 94933, 94932, 94931, 94930, 94929, 94928, 94927, 94926, 94925, 94924, 94923, 94922, 94921, 94920, 94919, 94918, 94917, 94916, 94915, 94914, 94913, 94912, 94911, 94910, 94909, 94908, 94907, 94906, 94905, 94904, 94903, 94902, 94901, 94900, 94899, 94898, 94897, 94896, 94895, 94894, 94893, 94892, 94891, 94890, 94889, 94888, 94887, 94886, 94885, 94884, 94883, 94882, 94881, 94880, 94879, 94878, 94877, 94876, 94875, 94874, 94873, 94872, 94871, 94870, 94869, 94868, 94867, 94866, 94865, 94864, 94863, 94862, 94861, 94860, 94859, 94858, 94857, 94856, 94855, 94854, 94853, 94852, 94851, 94850, 94849, 94848, 94847, 94846, 94845, 94844, 94843, 94842, 94841, 94840, 94839, 94838, 94837, 94836, 94835, 94834, 94833, 94832, 94831, 94830, 94829, 94828, 94827, 94826, 94825, 94824, 94823, 94822, 94821, 94820, 94819, 94818, 94817, 94816, 94815, 94814, 94813, 94812, 94811, 94810, 94809, 94808, 94807, 94806, 94805, 94804, 94803, 94802, 94801, 94800, 94799, 94798, 94797, 94796, 94795, 94794, 94793, 94792, 94791, 94790, 94789, 94788, 94787, 94786, 94785, 94784, 94783, 94782, 94781, 94780, 94779, 94778, 94777, 94776, 94775, 94774, 94773, 94772, 94771, 94770, 94769, 94768, 94767, 94766, 94765, 94764, 94763, 94762, 94761, 94760, 94759, 94758, 94757, 94756, 94755, 94754, 94753, 94752, 94751, 94750, 94749, 94748, 94747, 94746, 94745, 94744, 94743, 94742, 94741, 94740, 94739, 94738, 94737, 94736, 94735, 94734, 94733, 94732, 94731, 94730, 94729, 94728, 94727, 94726, 94725, 94724, 94723, 94722, 94721, 94720, 94719, 94718, 94717, 94716, 94715, 94714, 94713, 94712, 94711, 94710, 94709, 94708, 94707, 94706, 94705, 94704, 94703, 94702, 94701, 94700, 94699, 94698, 94697, 94696, 94695, 94694, 94693, 94692, 94691, 94690, 94689, 94688, 94687, 94686, 94685, 94684, 94683, 94682, 94681, 94680, 94679, 94678, 94677, 94676, 94675, 94674, 94673, 94672, 94671, 94670, 94669, 94668, 94667, 94666, 94665, 94664, 94663, 94662, 94661, 94660, 94659, 94658, 94657, 94656, 94655, 94654, 94653, 94652, 94651, 94650, 94649, 94648, 94647, 94646, 94645, 94644, 94643, 94642, 94641, 94640, 94639, 94638, 94637, 94636, 94635, 94634, 94633, 94632, 94631, 94630, 94629, 94628, 94627, 94626, 94625, 94624, 94623, 94622, 94621, 94620, 94619, 94618, 94617, 94616, 94615, 94614, 94613, 94612, 94611, 94610, 94609, 94608, 94607, 94606, 94605, 94604, 94603, 94602, 94601, 94600, 94599, 94598, 94597, 94596, 94595, 94594, 94593, 94592, 94591

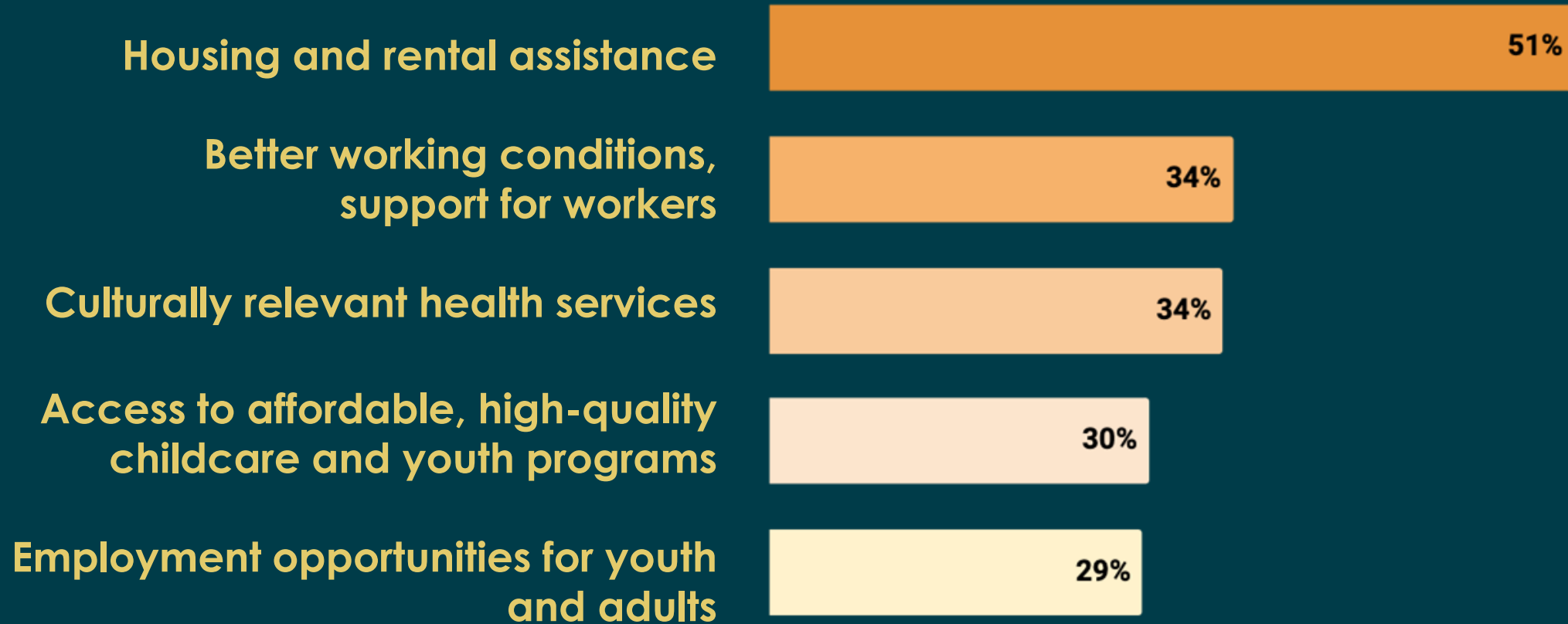
95123

What have been some of the biggest challenges for you during the COVID-19 pandemic?

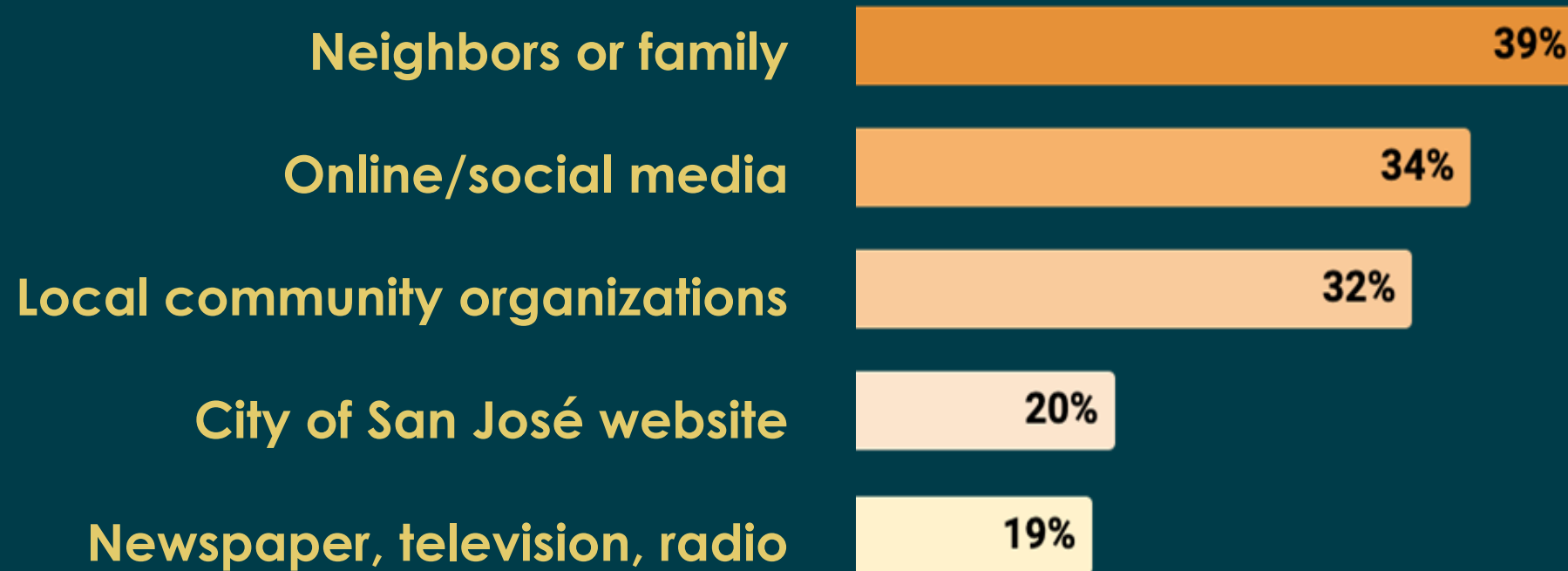
Top 5 Responses:

- 1. Staying safe and healthy while having to work**
- 2. Paying bills**
- 3. Feeling lonely, helpless or depressed**
- 4. Unable to see a doctor or dentist or get the medical help I need for myself or my family**
- 5. Having COVID-19**

What kinds of support would you like to see provided as the City recovers from COVID-19?



How did you learn about the City's COVID-19 services to support your family or business during the pandemic? Check all that apply.



How has your community supported you during the pandemic?

My workplace is **more flexible and accommodating to my emotional/mental and physical health needs...** I feel very safe at work for these reasons.

I was sick with COVID-19 and in my sick time, I was able to reach out to some services that compensated me for lost work wages. I was out for 2 weeks and the **money helped out.**

For the first year of the pandemic we **formed a pod** with another family with whom we **shared a nanny**, and that was life-saving.

Thanks to the **food organizations** that distribute food to our houses. They have helped us because the food prices have gone up a lot but **salaries have not.**

The disability community has supported me by...**sharing resources on the best practices** for keeping ourselves safe, even while other support systems do not adequately inform us...

Overall Engagement: Highlights



Economic Insecurity

Strong need to continue rental assistance and food distribution services.



Mental Health

Need to strengthen mental health support capacity, especially among youth and frontline workers.



Childcare

Shortage of accessible childcare opportunities, particularly among parents of children with disabilities.



Workers and Small Businesses

Many people who lost their jobs and whose businesses were hurt during the pandemic are still struggling to fully recover.



Outreach and Awareness

Majority of people do not know the resources available to them nor how to access them.

Q&A / Discussion

Breakout Group Discussion: Review Community Feedback

Breakout Group Discussion: 30 Minutes

Review committee-specific feedback

- ❑ Questions for discussion:
 - ❑ What did you find most interesting about the findings?
 - ❑ How do these findings impact your existing recommendations?
- ❑ Begin to incorporate committee-specific engagement findings into draft recommendations.
- ❑ Plan for finalizing draft recommendations for October 13 Task Force meeting

Public Comment

Next Steps

- ❑ Next Task Force meeting: Thursday, October 13, 6:00 p.m.
- ❑ Finalize Draft Recommendations
- ❑ Attend Committee meetings
- ❑ Website: www.sanjoseca.gov/covid19recovery
- ❑ Email: CERTaskForce@sanjoseca.gov
- ❑ Staff: Aurelia Bailey
Katerina Tubera
Carlos Velázquez
Rosalynn Hughey
Rob Lloyd

COVID-19 Recovery Task Force
Thank You!