

SILICON VALLEY'S AIRPORT

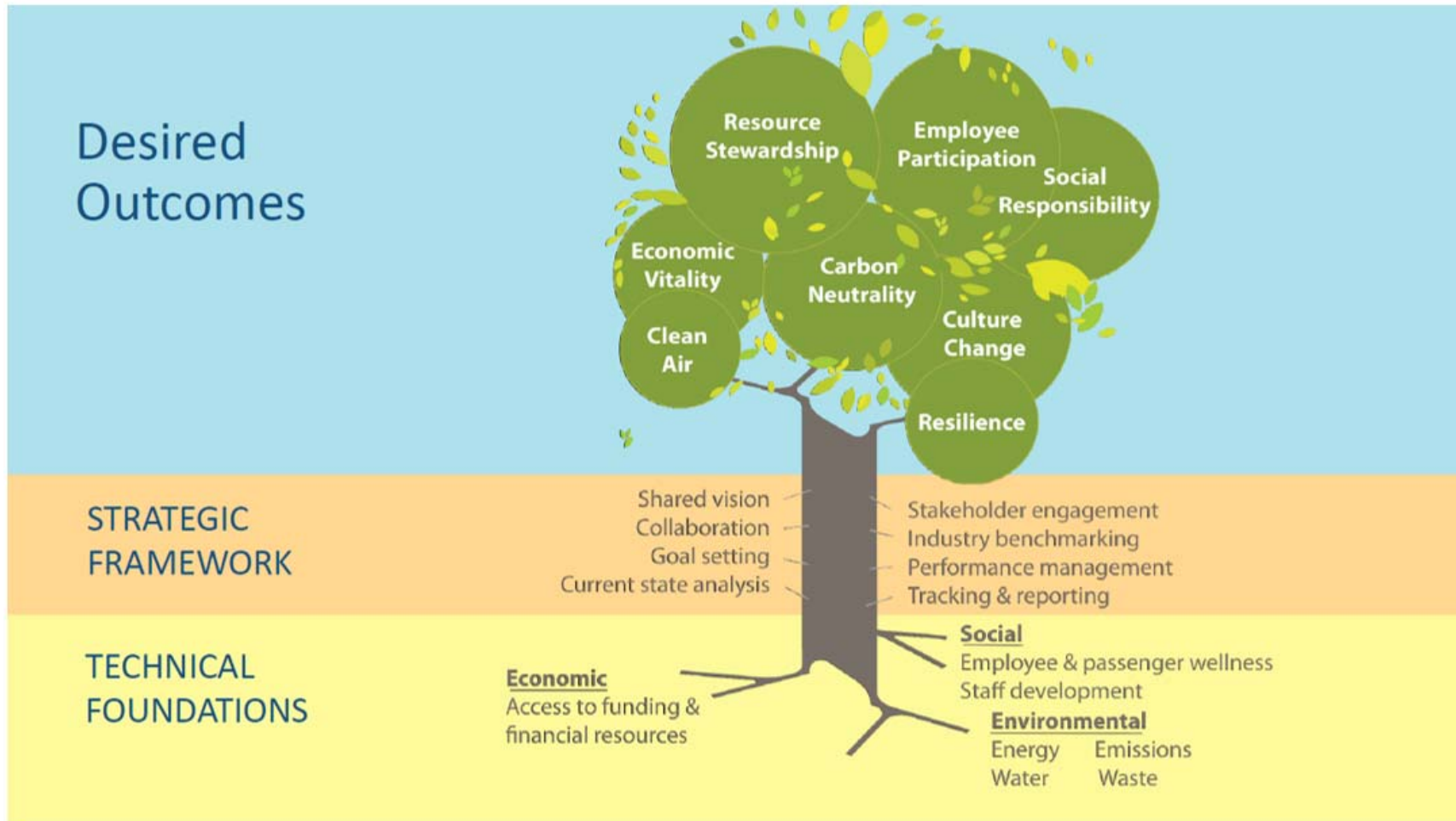


# Mineta San José International Airport's Sustainability Management Plan

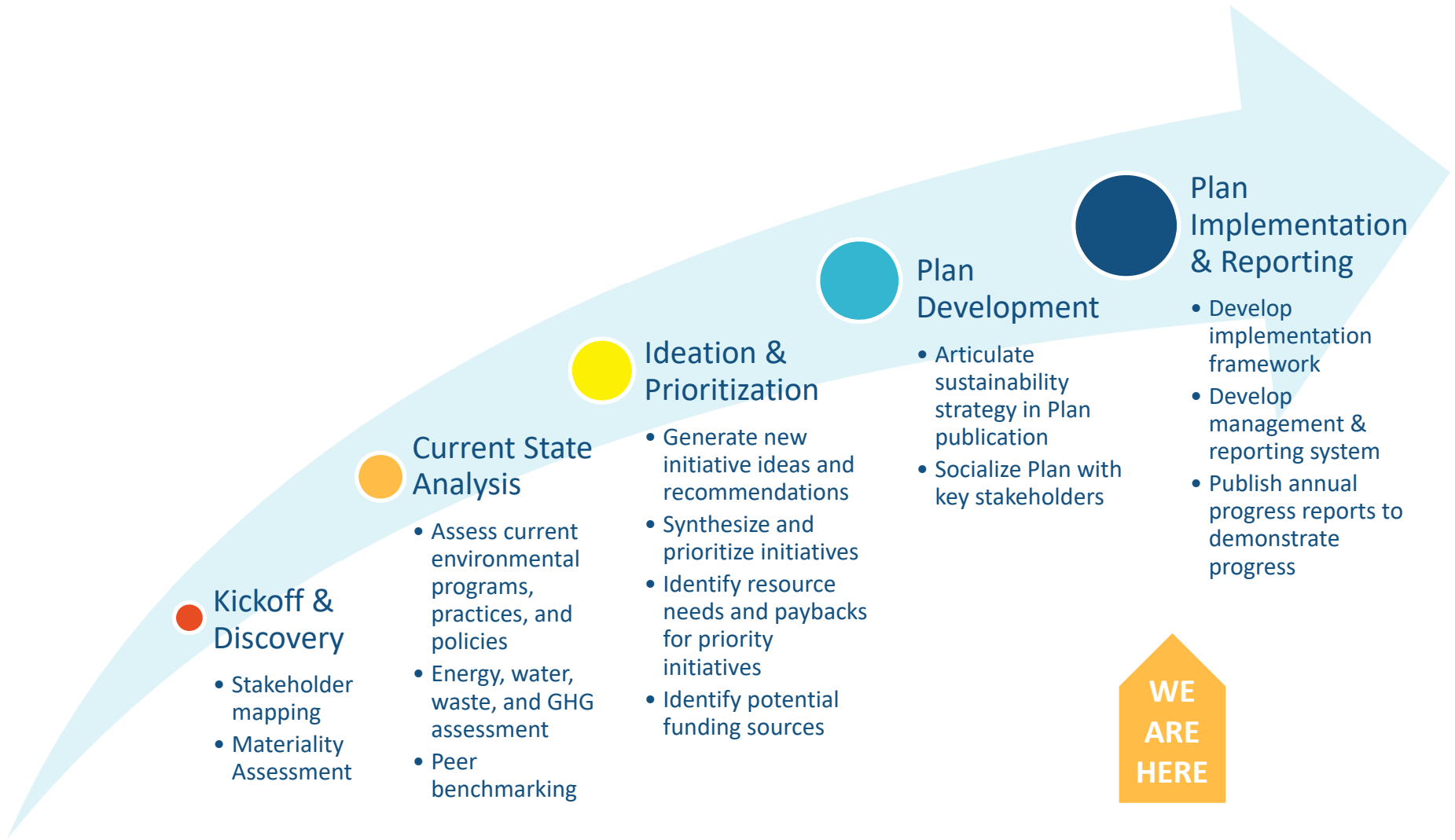
## Transportation & Environment Committee – Feb. 3rd, 2020

Judy Ross A.A.E., Assistant Director of Aviation  
Drew Niemeyer, Deputy Director of Planning & Development  
Patrick Hansen, Environmental Services Program Manager

# SJC's Sustainability Management Plan



# Sustainability Management Plan Development



# Sustainability Management Plan Development

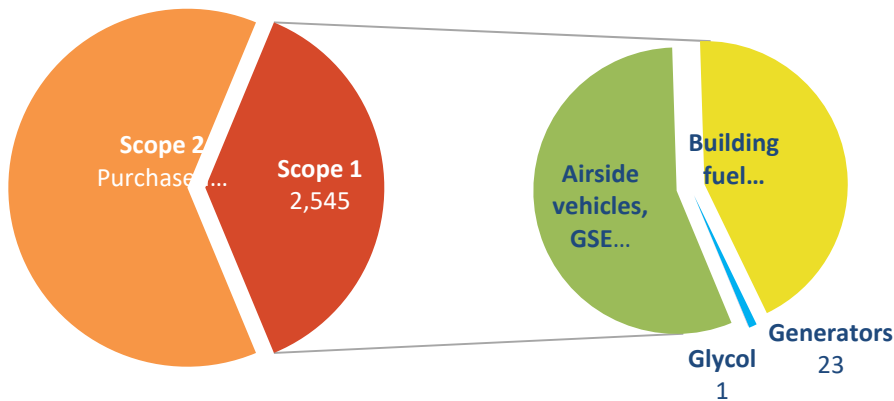


- Creation of Sustainability Management Plan Workgroup
- Identifying Key Stakeholders
- Defining the Customer

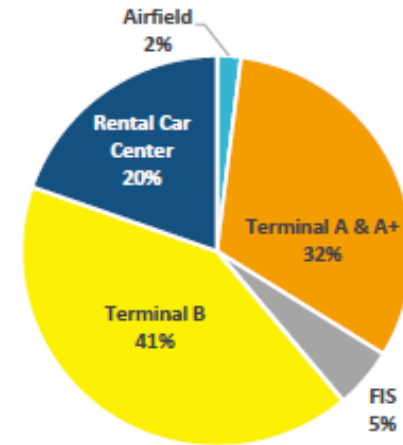
# Current State Analysis Fall 2018



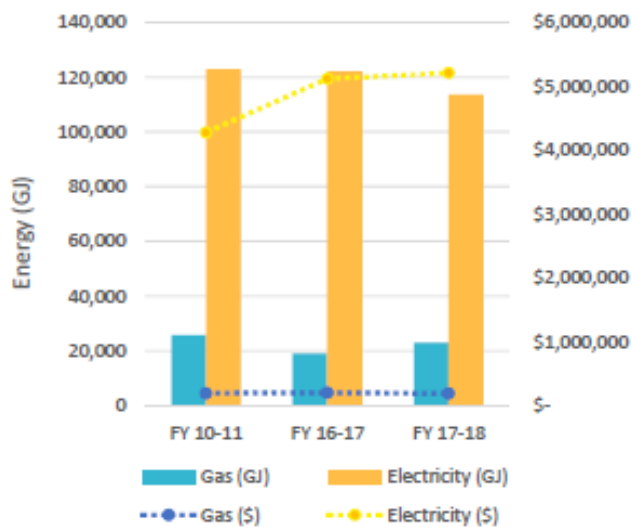
## Greenhouse Gas Emissions Inventory



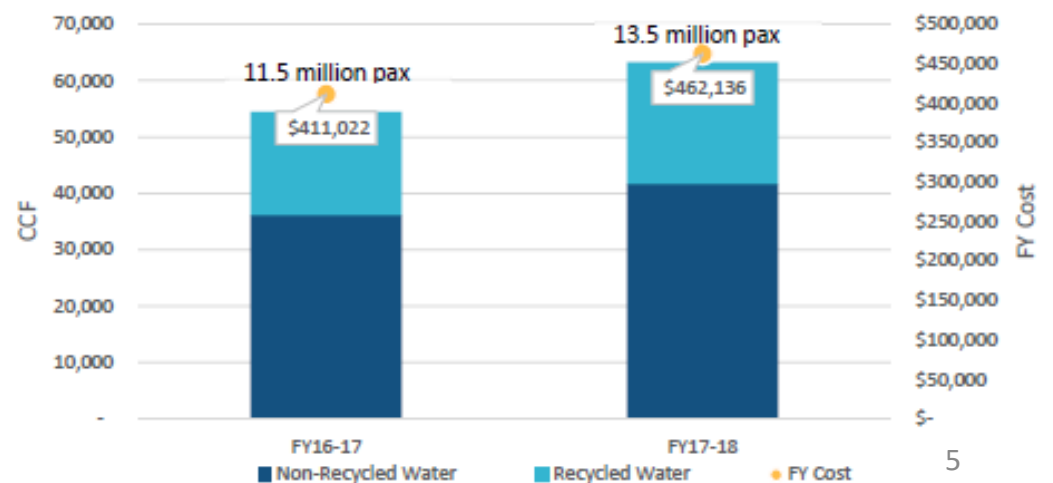
## Annual Electricity by End Use



## Annual Purchased Energy



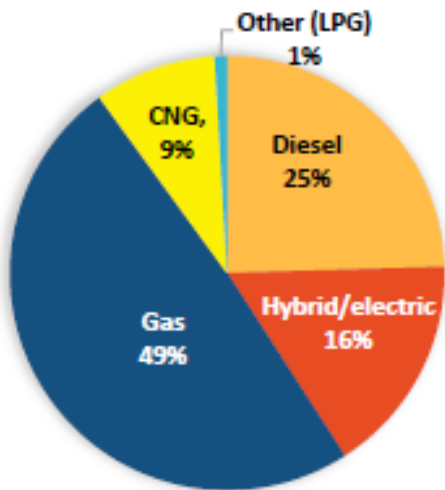
## Water Use Trends



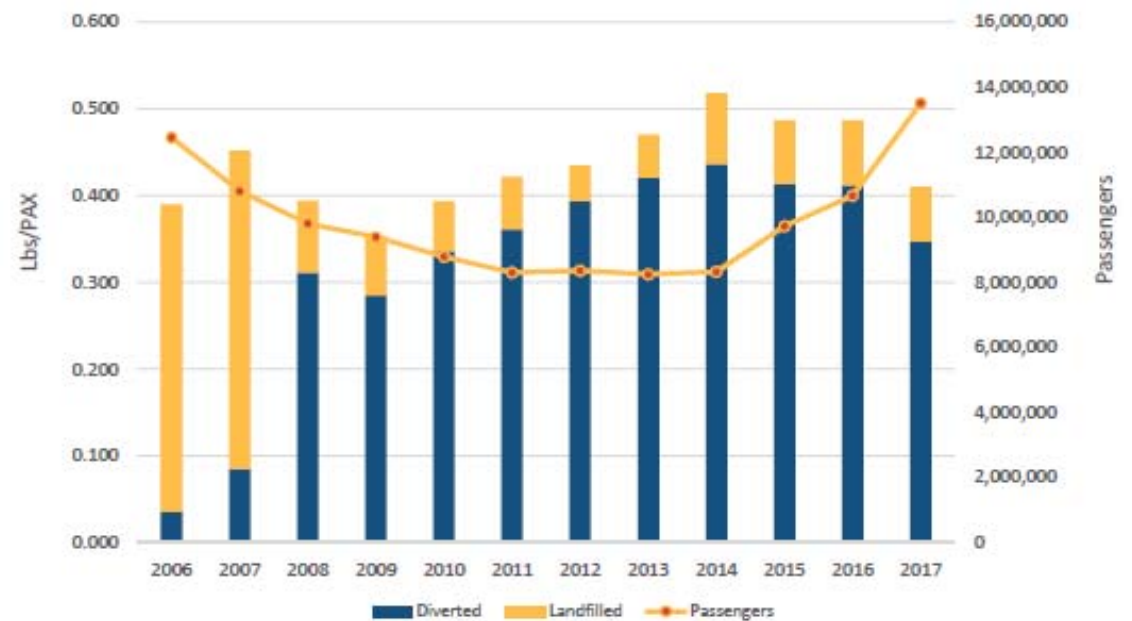
# Current State Analysis Fall 2018



## Airport Vehicle by Fuel Type



## Multi-Year Waste Generation Trends

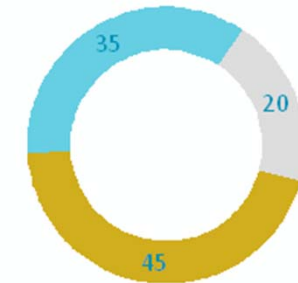


# Current Sustainability Initiatives at SJC



## SJCE GREENSOURCE

- Wind and Solar
- Hydro
- Unspecified
- Nuclear
- Natural Gas



- 80% carbon free
- 45% renewable
- 1% customer savings



# Planned Sustainability Initiatives

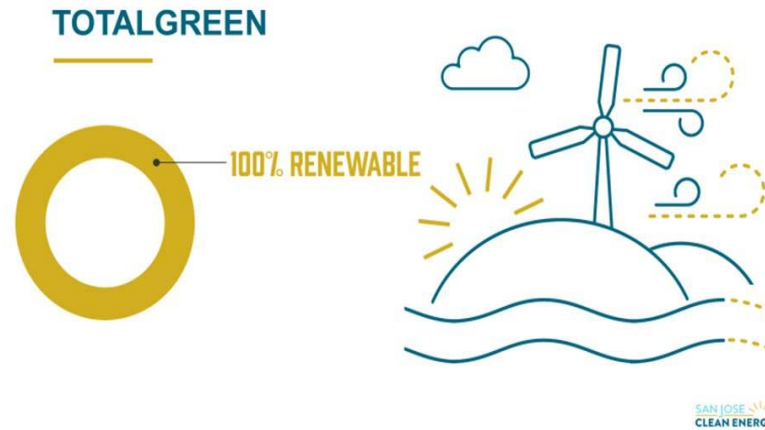




# Planned Sustainability Initiatives



- Energy
- Water
- Ground Transportation
- Natural Resources



# Planned Sustainability Initiatives



- Social Responsibility



- Sustainability Governance



- Climate Action



- Waste

LEAVES NO TRACE

# Thank You

