

DRAFT

ORDINANCE NO. _____

AN ORDINANCE OF THE CITY OF SAN JOSE REZONING 132 PROPERTIES FROM R-M ZONING DISTRICT TO MUN MIXED USE NEIGHBORHOOD ZONING DISTRICT, 94 FROM R-1-1 SINGLE-FAMILY RESIDENTIAL ZONING DISTRICT TO OS OPEN SPACE ZONING DISTRICT, 48 FROM A AGRICULTURE ZONING DISTRICT TO OS OPEN SPACE ZONING DISTRICT, 40 FROM R-1-5 SINGLE-FAMILY RESIDENTIAL ZONING DISTRICT TO OS OPEN SPACE ZONING DISTRICT, 37 FROM R-1-8 SINGLE-FAMILY RESIDENTIAL ZONING DISTRICT TO OS OPEN SPACE ZONING DISTRICT, 36 FROM A AGRICULTURE ZONING DISTRICT TO R-1-8 SINGLE-FAMILY RESIDENTIAL ZONING DISTRICT, 33 FROM R-1-8 SINGLE-FAMILY RESIDENTIAL ZONING DISTRICT TO PQP PUBLIC/QUASI-PUBLIC ZONING DISTRICT, 27 FROM R-2 TO MUN MIXED USE NEIGHBORHOOD ZONING DISTRICT, 21 FROM A AGRICULTURE ZONING DISTRICT TO PQP PUBLIC/QUASI-PUBLIC ZONING DISTRICT, 11 FROM A AGRICULTURE ZONING DISTRICT TO R-1-2, NINE FROM R-1-5 SINGLE-FAMILY RESIDENTIAL ZONING DISTRICT TO PQP PUBLIC/QUASI-PUBLIC ZONING DISTRICT, EIGHT FROM A AGRICULTURE ZONING DISTRICT TO CP COMMERCIAL PEDESTRIAN ZONING DISTRICT, EIGHT FROM R-1-1 SINGLE-FAMILY RESIDENTIAL ZONING DISTRICT TO PQP PUBLIC/QUASI-PUBLIC ZONING DISTRICT, FIVE FROM R-1-5 SINGLE-FAMILY RESIDENTIAL ZONING DISTRICT TO CP COMMERCIAL PEDESTRIAN ZONING DISTRICT, FIVE FROM R-1-5 SINGLE-FAMILY RESIDENTIAL ZONING DISTRICT TO R-1-2, FOUR FROM R-1-8 SINGLE-FAMILY RESIDENTIAL ZONING DISTRICT TO MUN MIXED USE NEIGHBORHOOD ZONING DISTRICT, FOUR FROM R-1-RR TO R-1-2, FOUR FROM R-1-5 SINGLE-FAMILY RESIDENTIAL ZONING DISTRICT TO R-1-RR, FOUR FROM A AGRICULTURE ZONING DISTRICT TO R-1-RR, TWO FROM LI LIGHT INDUSTRIAL ZONING DISTRICT TO CP COMMERCIAL PEDESTRIAN ZONING DISTRICT, THREE FROM CN COMMERCIAL NEIGHBORHOOD ZONING DISTRICT TO OS OPEN SPACE ZONING DISTRICT, TWO FROM R-1-2 TO CIC COMBINED INDUSTRIAL/COMMERCIAL ZONING DISTRICT, TWO FROM IP INDUSTRIAL PARK ZONING DISTRICT TO OS OPEN SPACE ZONING DISTRICT, TWO FROM CP COMMERCIAL PEDESTRIAN ZONING DISTRICT TO R-1-8

SINGLE-FAMILY RESIDENTIAL ZONING DISTRICT, TWO FROM R-1-2 TO R-1-RR, ONE FROM R-1-5 SINGLE-FAMILY RESIDENTIAL ZONING DISTRICT TO A AGRICULTURE ZONING DISTRICT, ONE FROM IP INDUSTRIAL PARK ZONING DISTRICT TO CP COMMERCIAL PEDESTRIAN ZONING DISTRICT, ONE FROM R-1-1 SINGLE-FAMILY RESIDENTIAL ZONING DISTRICT TO LI LIGHT INDUSTRIAL ZONING DISTRICT, ONE FROM R-1-1 SINGLE-FAMILY RESIDENTIAL ZONING DISTRICT TO MUN MIXED USE NEIGHBORHOOD ZONING DISTRICT, ONE FROM CO COMMERCIAL OFFICE ZONING DISTRICT TO OS OPEN SPACE ZONING DISTRICT, ONE FROM CP COMMERCIAL PEDESTRIAN ZONING DISTRICT TO OS OPEN SPACE ZONING DISTRICT, ONE FROM R-1-2 TO OS OPEN SPACE ZONING DISTRICT, ONE FROM R-M ZONING DISTRICT TO OS OPEN SPACE ZONING DISTRICT, ONE FROM CN COMMERCIAL NEIGHBORHOOD ZONING DISTRICT TO PQP PUBLIC/QUASI-PUBLIC ZONING DISTRICT, AND ONE FROM WATER TO PQP PUBLIC/QUASI-PUBLIC ZONING DISTRICT, ALL LOCATED ON THOSE CERTAIN REAL PROPERTIES SITUATED WITHIN THE CITY OF SAN JOSE

WHEREAS, all rezoning proceedings required under the provisions of Chapter 20.120 of Title 20 of the San José Municipal Code have been duly had and taken with respect to the real property hereinafter described; and

WHEREAS, pursuant to Section 15168(c)(2) of the CEQA Guidelines, the City of San José has determined the proposed rezoning is pursuant to, in furtherance of and within the scope of the previously approved program evaluated in the Final Program Environmental Impact Report for the Envision San José 2040 General Plan (the “FEIR”), for which findings were adopted by City Council through its Resolution No. 76041 on November 1, 2011 and Supplemental Environmental Impact Report (the “SEIR”), through Resolution No. 77617, adopted by City Council on December 15, 2015, and Addenda thereto, and does not involve new significant effects beyond those analyzed in the FEIR and SEIR; and

WHEREAS, the City Council of the City of San José is the decision-making body for the proposed subject rezonings to the A Agriculture, CIC Combined Industrial/ Commercial, CP Commercial Pedestrian, LI Light Industrial, MUN Mixed Use Neighborhood, OS Open Space, PQP Public/Quasi-Public, R-1-2 and R-1-8 Single-Family Residential, and R-1-RR Rural Residential; and

WHEREAS, this Council of the City of San José has considered and approves the information contained in the FEIR and related City Council Resolution No. 76041, and in the SEIR and related City Council Resolution No. 77617, and Addenda thereto, and the determination of consistency therewith prior to acting upon or approving the subject rezoning; and

WHEREAS, the proposed rezonings are consistent with the designations of the sites in the applicable General Plan; and

WHEREAS, pursuant to Senate Bill 330, the proposed rezonings (File Nos. C22-126, C22-127, C22-128, C22-129, C22-130, C22-131, C22-132, C22-133, C22-134, C22-135, C23-096) would not decrease the residential units satisfying Senate Bill 330 and Senate Bill 940 requirements; the changes in zoning decrease the residential capacity on some properties by 18,585 residential units but increase the residential capacity on other properties by 58,726 residential units; therefore, there is still a surplus of 40,141 residential units available ($58,726 - 18,585 = 40,141$ units) complying with Senate Bill 330 and Senate Bill 940 requirements;

NOW, THEREFORE, BE IT ORDAINED BY THE COUNCIL OF THE CITY OF SAN JOSE:

SECTION 1. The recitals above are incorporated herein.

SECTION 2. All that real property hereinafter described in this section, hereinafter

referred to as "subject property," is hereby rezoned to the A Agriculture, CIC Combined Industrial/ Commercial, CP Commercial Pedestrian, LI Light Industrial, MUN Mixed Use Neighborhood, OS Open Space, PQP Public/Quasi-Public, R-1-2 and R-1-8 Single-Family Residential, R-1-RR Rural Residential.

The subject properties referred to in this section are all those real properties situated in the County of Santa Clara, State of California, described in Exhibit "A" and depicted in Exhibit "B" attached hereto and incorporated herein by this reference.

SECTION 3. The district map of the City is hereby amended accordingly.

SECTION 4. Any land development approval that is the subject of City File Nos. C22-126, C22-127, C22-128, C22-129, C22-130, C22-131, C22-132, C22-133, C22-134, C22-135 and C23-096 is subject to the operation of Part 2.75 of Chapter 15.12 of Title 15 of the San José Municipal Code. The issuance of a building permit to implement such land development approval may be suspended, conditioned or denied where the City Manager has determined that such action is necessary to remain within the aggregate operational capacity of the sanitary sewer system available to the City of San José or to meet the discharge standards of the sanitary sewer system imposed by the California Regional Water Quality Control Board for the San Francisco Bay Region.

//

//

//

//

//

PASSED FOR PUBLICATION of title this ____ day of _____, 2023 by the following vote:

AYES:

NOES:

ABSENT:

DISQUALIFIED:

MATT MAHAN
Mayor

ATTEST:

TONI J. TABER, CMC
City Clerk

EXHIBIT "A"

EXISTING GENERAL PLAN DESIGNATION AND EXISTING AND PROPOSED ZONING DISTRICT PARCEL LIST

File Nos. C22-126, C22-127, C22-128, C22-129, C22-130, C22-131, C22-132, C22-133, C22-134, C22-135 and C23-096: The following parcels specified by Assessor's Parcel Number (APN) are hereby rezoned from the zoning district specified below as "Existing Zoning" to the zoning district specified below as "Conforming Rezoning:"

No.	APN	Existing General Plan Designation	Existing Zoning District	Proposed Zoning District	Density Change (Residential Units)
1	46214013	OSPH	R-1-8	OS	-2
2	46408001	PQP	R-1-8	PQP	888
3	46404073	OSPH	R-1-8	OS	-5
4	46414012	PQP	R-1-8	PQP	1
5	46429015	PQP	R-1-1	PQP	3433
6	46429018	PQP	A	PQP	1193
7	46243005	NCC	LI	CP	94
8	46213023	OSPH	R-1-8	OS	-1
9	46414020	PQP	R-1-1	PQP	138
10	69216037	OSPH	R-1-8	OS	-10
11	69217022	PQP	R-1-8	PQP	1043
12	69029008	MUN	R-2	MUN	6
13	69029009	MUN	R-2	MUN	6
14	69029010	MUN	R-2	MUN	6
15	69029011	MUN	R-2	MUN	6
16	69029012	MUN	R-2	MUN	6
17	69009006	PQP	R-1-1	PQP	3932
18	69029001	MUN	R-1-1	MUN	12
19	69029002	MUN	R-2	MUN	6
20	69029003	MUN	R-2	MUN	6
21	69029004	MUN	R-2	MUN	6
22	69029020	MUN	R-2	MUN	6
23	69029021	MUN	R-2	MUN	5
24	69029022	MUN	R-2	MUN	5
25	69029023	MUN	R-2	MUN	5
26	69029024	MUN	R-2	MUN	5

A-1

T-52000 / 2048387_5
Council Agenda: 10.1(d)
Item No.: 10/17/2023

DRAFT – Contact the Office of the City Clerk at (408) 535-1260 or CityClerk@sanjoseca.gov for final document.

27	69029025	MUN	R-2	MUN	6
28	69029026	MUN	R-2	MUN	6
29	69009003	MUN	R-M	MUN	-712
30	69029027	MUN	R-2	MUN	6
31	69029028	MUN	R-2	MUN	5
32	69029013	MUN	R-2	MUN	6
33	69029014	MUN	R-2	MUN	6
34	69029015	MUN	R-2	MUN	6
35	69029016	MUN	R-2	MUN	6
36	69029017	MUN	R-2	MUN	6
37	69029018	MUN	R-2	MUN	6
38	69029019	MUN	R-2	MUN	6
39	49415006	PQP	R-1-8	PQP	183
40	49415004	OSPH	R-1-8	OS	-4
41	49415005	PQP	R-1-8	PQP	732
42	49415033	OSPH	R-1-8	OS	-7
43	46224052	OSPH	R-1-1	OS	-1
44	69029005	MUN	R-2	MUN	6
45	69029006	MUN	R-2	MUN	6
46	69029007	MUN	R-2	MUN	6
47	49447101	RN	CP	R-1-8	-13
48	49417005	PQP	R-1-8	PQP	876
49	69017033	OSPH	R-M	OS	-266
50	49428061	PQP	A	PQP	474
51	46256049	OSPH	R-1-8	OS	-5
52	46256049	OSPH	R-1-1	OS	-1
53	46205113	OSPH	R-1-1	OS	-4
54	46205113	OSPH	R-1-8	OS	-6
55	68402007	CIC	R-1-2	CIC	-3
56	68402008	LI	R-1-1	LI	-10
57	69024C01	MUN	R-M	MUN	-13
58	69024C02	MUN	R-M	MUN	-13
59	69024C03	MUN	R-M	MUN	-13
60	69024C04	MUN	R-M	MUN	-13
61	69024C05	MUN	R-M	MUN	-14
62	69024C09	MUN	R-M	MUN	-15
63	69024C10	MUN	R-M	MUN	-22
64	69024C11	MUN	R-M	MUN	-12

65	69024C12	MUN	R-M	MUN	-12
66	69024C13	MUN	R-M	MUN	-12
67	69024C14	MUN	R-M	MUN	-12
68	69024C15	MUN	R-M	MUN	-15
69	69022C02	MUN	R-M	MUN	-11
70	69022C03	MUN	R-M	MUN	-11
71	69022C04	MUN	R-M	MUN	-11
72	69022C05	MUN	R-M	MUN	-11
73	69022C06	MUN	R-M	MUN	-12
74	69022C07	MUN	R-M	MUN	-11
75	69022C08	MUN	R-M	MUN	-12
76	69022C09	MUN	R-M	MUN	-14
77	69022C10	MUN	R-M	MUN	-11
78	69022C11	MUN	R-M	MUN	-11
79	69022C12	MUN	R-M	MUN	-11
80	68453019	PQP	R-1-8	PQP	1
81	68453020	PQP	R-1-8	PQP	1
82	68453021	PQP	R-1-8	PQP	1
83	68453024	PQP	R-1-8	PQP	1
84	68453032	PQP	R-1-8	PQP	206
85	68509001	PQP	R-1-8	PQP	920
86	46202022	MUN	R-1-8	MUN	2
87	46202024	MUN	R-1-8	MUN	11
88	46202021	MUN	R-1-8	MUN	2
89	46202023	MUN	R-1-8	MUN	3
90	46214013	OSPH	R-1-8	OS	-4
91	69022C13	MUN	R-M	MUN	-15
92	69022C14	MUN	R-M	MUN	-16
93	69021C01	MUN	R-M	MUN	-11
94	69021C02	MUN	R-M	MUN	-11
95	69021C03	MUN	R-M	MUN	-11
96	69021C13	MUN	R-M	MUN	-11
97	69021C14	MUN	R-M	MUN	-11
98	69021C15	MUN	R-M	MUN	-11
99	69021C16	MUN	R-M	MUN	-11
100	69021C17	MUN	R-M	MUN	-11
101	69021C18	MUN	R-M	MUN	-11
102	69021C19	MUN	R-M	MUN	-11

103	69021C04	MUN	R-M	MUN	-15
104	69021C05	MUN	R-M	MUN	-18
105	69021C06	MUN	R-M	MUN	-11
106	69021C07	MUN	R-M	MUN	-11
107	69021C08	MUN	R-M	MUN	-11
108	69021C09	MUN	R-M	MUN	-15
109	69021C10	MUN	R-M	MUN	-18
110	69021C11	MUN	R-M	MUN	-18
111	69021C12	MUN	R-M	MUN	-15
112	69021C22	MUN	R-M	MUN	-11
113	69019C02	MUN	R-M	MUN	-13
114	69019C03	MUN	R-M	MUN	-13
115	69019C04	MUN	R-M	MUN	-13
116	69019C05	MUN	R-M	MUN	-13
117	69019C06	MUN	R-M	MUN	-11
118	69019C07	MUN	R-M	MUN	-11
119	69019C08	MUN	R-M	MUN	-11
120	69019C09	MUN	R-M	MUN	-11
121	69021C20	MUN	R-M	MUN	-11
122	69021C21	MUN	R-M	MUN	-11
123	69019C10	MUN	R-M	MUN	-11
124	69019C11	MUN	R-M	MUN	-11
125	69019C12	MUN	R-M	MUN	-11
126	69019C13	MUN	R-M	MUN	-11
127	69019C14	MUN	R-M	MUN	-11
128	69019C15	MUN	R-M	MUN	-11
129	69020C01	MUN	R-M	MUN	-11
130	69020C02	MUN	R-M	MUN	-12
131	69020C03	MUN	R-M	MUN	-12
132	69020C04	MUN	R-M	MUN	-26
133	69020C05	MUN	R-M	MUN	-15
134	69020C06	MUN	R-M	MUN	-12
135	46210007	PQP	R-1-8	PQP	852
136	46211061	OSPH	R-1-8	OS	-4
137	69022C01	MUN	R-M	MUN	-19
138	69020C07	MUN	R-M	MUN	-11
139	69020C08	MUN	R-M	MUN	-11
140	69020C09	MUN	R-M	MUN	-11

141	69020C10	MUN	R-M	MUN	-11
142	69020C11	MUN	R-M	MUN	-11
143	69020C12	MUN	R-M	MUN	-11
144	69020C13	MUN	R-M	MUN	-11
145	69020C14	MUN	R-M	MUN	-11
146	69020C15	MUN	R-M	MUN	-11
147	69020C16	MUN	R-M	MUN	-11
148	69019C01	MUN	R-M	MUN	-23
149	69020C17	MUN	R-M	MUN	-17
150	69020C18	MUN	R-M	MUN	-11
151	69020C19	MUN	R-M	MUN	-11
152	69023C10	MUN	R-M	MUN	-11
153	69023C11	MUN	R-M	MUN	-11
154	69023C12	MUN	R-M	MUN	-11
155	69023C13	MUN	R-M	MUN	-11
156	46261C01	MUN	R-M	MUN	-249
157	69020C20	MUN	R-M	MUN	-11
158	69020C21	MUN	R-M	MUN	-11
159	69023C01	MUN	R-M	MUN	-11
160	69023C02	MUN	R-M	MUN	-11
161	69023C03	MUN	R-M	MUN	-11
162	68402011	CIC	R-1-2	CIC	-2
163	69023C04	MUN	R-M	MUN	-11
164	69023C05	MUN	R-M	MUN	-11
165	69023C06	MUN	R-M	MUN	-14
166	69023C07	MUN	R-M	MUN	-14
167	69023C08	MUN	R-M	MUN	-14
168	69023C09	MUN	R-M	MUN	-11
169	69024C06	MUN	R-M	MUN	-14
170	69024C07	MUN	R-M	MUN	-13
171	69024C08	MUN	R-M	MUN	-23
172	69017085	RN	A	R-1-8	2
173	69033C03	MUN	R-M	MUN	-513
174	69033C02	MUN	R-M	MUN	-556
175	69002009	NCC	IP	CP	61
176	69001005	NCC	LI	CP	85
177	69001006	PQP	R-1-1	PQP	371

178	69001006	PQP	CN	PQP	-10
179	49415053	OSPH	R-1-8	OS	-16
180	49416012	OSPH	R-1-8	OS	-5
181	69006061	PQP	R-1-1	PQP	177
182	49416003	OSPH	R-1-8	OS	-16
183	69207062	PQP	R-1-8	PQP	975
184	67802034	OSPH	R-1-5	OS	-124
185	67802026	OSPH	R-1-5	OS	-2
186	67802009	OSPH	R-1-1	OS	-39
187	67803006	NCC	A	CP	24
188	67804004	OSPH	R-1-1	OS	-5
189	67804010	OSPH	R-1-1	OS	-5
190	67804011	OSPH	R-1-1	OS	-74
191	67847091	OSPH	R-1-8	OS	-3
192	67903001	OSPH	R-1-8	OS	-11
193	67839089	OSPH	R-1-8	OS	-2
194	71217012	OH	R-1-1	OS	-466
195	68439010	MUN	R-M	MUN	-11
196	68439011	MUN	R-M	MUN	-11
197	68439012	MUN	R-M	MUN	-25
198	68439013	MUN	R-M	MUN	-25
199	68439014	MUN	R-M	MUN	-25
200	67851053	RN	A	R-1-8	3
201	68419028	PQP	R-1-8	PQP	981
202	68415006	PQP	A	PQP	47
203	70822002	OH	R-1-5	OS	-6
204	67803036	NCC	A	CP	198
205	67803036	NCC	R-1-5	CP	64
206	72506002	OH	R-1-1	OS	-1
207	68433045	MUN	R-M	MUN	-10
208	68433046	MUN	R-M	MUN	-10
209	68434049	MUN	R-M	MUN	-11
210	68434050	MUN	R-M	MUN	-10
211	68434051	MUN	R-M	MUN	-9
212	68434052	MUN	R-M	MUN	-10
213	68434053	MUN	R-M	MUN	-10
214	68434027	MUN	R-M	MUN	-9

215	68434028	MUN	R-M	MUN	-9
216	68433047	MUN	R-M	MUN	-11
217	68433048	MUN	R-M	MUN	-10
218	68433049	MUN	R-M	MUN	-10
219	68433050	MUN	R-M	MUN	-11
220	68433051	MUN	R-M	MUN	-12
221	68433052	MUN	R-M	MUN	-14
222	68433053	MUN	R-M	MUN	-16
223	68437002	PQP	R-1-8	PQP	1204
224	68433055	MUN	R-M	MUN	-10
225	68433056	MUN	R-M	MUN	-13
226	68433057	MUN	R-M	MUN	-12
227	68433058	MUN	R-M	MUN	-12
228	68433059	MUN	R-M	MUN	-11
229	68433054	MUN	R-M	MUN	-10
230	68434005	OSPH	R-1-8	OS	-22
231	68433087	MUN	R-M	MUN	-181
232	67878030	OSPH	R-1-5	OS	-1
233	70822001	OH	R-1-5	OS	-9
234	70829002	OSPH	R-1-5	OS	-2
235	74212008	OH	R-1-1	OS	-21
236	72512015	OSPH	R-1-1	OS	-4
237	71209009	A	R-1-5	A	-4
238	74219001	OH	R-1-1	OS	-210
239	71203038	OH	R-1-1	OS	-15
240	72510018	OSPH	R-1-1	OS	-22
241	72510018	OH	R-1-1	OS	-1
242	72506001	OH	R-1-1	OS	-37
243	70633066	RN	A	R-1-8	1
244	68415049	PQP	A	PQP	3
245	67903003	OSPH	IP	OS	1
246	67904001	OSPH	R-1-1	OS	-13
247	67905001	OSPH	R-1-1	OS	-43
248	67902014	OSPH	IP	OS	1
249	67905006	OSPH	R-1-1	OS	-172
250	67905008	OSPH	R-1-1	OS	-6
251	67906003	OSPH	R-1-1	OS	-3
252	74212007	OH	R-1-1	OS	-5

A-7

253	74233008	OH	R-1-1	OS	-11
254	74233009	OH	R-1-1	OS	-6
255	49462002	OSPH	R-1-8	OS	-1
256	49466004	OSPH	R-1-8	OS	-27
257	74209047	OH	R-1-1	OS	-8
258	74204024	OH	R-1-1	OS	-1
259	68425001	PQP	R-1-1	PQP	955
260	74209049	OH	R-1-1	OS	-645
261	74209009	OH	R-1-1	OS	-5
262	74233006	OH	R-1-1	OS	-1
263	74233007	OH	R-1-1	OS	-1
264	74233002	OH	R-1-1	OS	-4
265	74202022	OH	R-1-1	OS	-48
266	74202023	OH	R-1-1	OS	-35
267	74202025	OH	R-1-1	OS	-153
268	74209050	OH	R-1-1	OS	-1
269	74204008	OH	R-1-1	OS	-1
270	74204014	OH	R-1-1	OS	-12
271	74203013	OH	R-1-1	OS	-1
272	74203016	OH	R-1-1	OS	-1
273	74204023	OH	R-1-1	OS	-1
274	74204022	OH	R-1-1	OS	-1
275	74209051	OH	R-1-1	OS	-4
276	74209052	OH	R-1-1	OS	-3
277	67801004	OH	R-1-1	OS	-768
278	49466006	OSPH	R-1-8	OS	-4
279	67811003	OH	R-1-1	OS	-1005
280	67811002	OH	R-1-1	OS	-334
281	72952019	OH	R-1-1	OS	-10
282	72952008	OH	R-1-1	OS	-1807
283	72952018	OH	R-1-1	OS	-21
284	68425001	PQP	R-1-8	PQP	1311
285	72952028	OH	R-1-1	OS	-66
286	72952027	OH	R-1-1	OS	-278
287	72952022	OH	R-1-1	OS	-151
288	72952026	OH	R-1-1	OS	-30
289	70832002	OH	R-1-1	OS	-4
290	72957003	OH	R-1-1	OS	-178

291	72957001	OH	R-1-1	OS	-88
292	74212008	OH	R-1-1	OS	-44
293	67801018	OH	R-1-1	OS	-598
294	74202026	OH	R-1-1	OS	-39
295	74210003	OH	R-1-1	OS	-236
296	74210003	OH	R-1-1	OS	-10
297	74210003	OH	R-1-1	OS	-11
298	74209041	OH	R-1-1	OS	-204
299	74209037	OH	R-1-1	OS	-1
300	74209043	OH	R-1-1	OS	-79
301	74212009	OH	R-1-1	OS	-1835
302	74209036	OH	R-1-1	OS	-1
303	74209042	OH	R-1-1	OS	-57
304	74209046	OH	R-1-1	OS	-708
305	72951004	OH	R-1-1	OS	-609
306	62714026	OH	R-1-1	OS	-1
307	62714009	OH	R-1-1	OS	-24
308	72948004	OH	R-1-1	OS	-523
309	72948006	OH	R-1-1	OS	-144
310	71203092	OH	R-1-1	OS	-1
311	72952004	OH	R-1-1	OS	-1
312	72950003	OH	R-1-1	OS	-51
313	72950001	OH	R-1-1	OS	-3
314	72948001	OH	R-1-1	OS	-86
315	72948002	OH	R-1-1	OS	-110
316	72948005	OH	R-1-1	OS	-1069
317	72952017	OH	R-1-1	OS	-2
318	72952012	OH	R-1-1	OS	-30
319	72952010	OH	R-1-1	OS	-146
320	72952009	OH	R-1-1	OS	-34
321	72952011	OH	R-1-1	OS	-138
322	72952014	OH	R-1-1	OS	-16
323	72835005	OH	R-1-1	OS	-3
324	70830001	OH	R-1-1	OS	-32
325	72948001	OH	R-1-1	OS	-9
326	72948001	OH	R-1-1	OS	-9
327	67909004	RR	A	R-1-2	4
328	67909005	RR	A	R-1-2	8

329	66005003	OSPH	R-1-1	OS	-1
330	66007003	OSPH	R-1-5	OS	-1
331	66008010	OSPH	A	OS	0
332	66008010	RR	A	R-1-2	5
333	68002019	PQP	A	PQP	678
334	67907002	OSPH	A	OS	0
335	66008005	OSPH	A	OS	0
336	66008005	RR	A	R-1-2	1
337	68003008	RR	A	R-1-2	9
338	68003008	OSPH	A	OS	0
339	68003008	RR	A	R-1-2	1
340	67910002	RR	A	R-1-2	1
341	67910003	RR	A	R-1-2	1
342	67910004	RR	A	R-1-2	5
343	67910005	RR	A	R-1-2	12
344	66006080	OSPH	A	OS	0
345	66006080	RR	A	R-1-2	1
346	66008006	OSPH	A	OS	0
347	67907001	OSPH	A	OS	0
348	67906004	OSPH	A	OS	0
349	68067001	PQP	A	PQP	1
350	68067002	PQP	A	PQP	1
351	68067003	PQP	A	PQP	1
352	68067004	PQP	A	PQP	1
353	68067005	PQP	A	PQP	1
354	68067006	PQP	A	PQP	1
355	68067007	PQP	A	PQP	1
356	68067008	PQP	A	PQP	1
357	68067082	PQP	A	PQP	1
358	68067081	PQP	A	PQP	1
359	68067080	PQP	A	PQP	1
360	68067079	PQP	A	PQP	1
361	64918027	PQP	R-1-8	PQP	199
362	65904011	NCC	A	CP	77
363	65904014	NCC	A	CP	32
364	65904056	NCC	A	CP	221
365	65904056	NCC	R-1-5	CP	219
366	65905056	RN	A	R-1-8	1

A-10

367	65905007	RN	A	R-1-8	1
368	67620089	PQP	R-1-8	PQP	1
369	67620089	OSPH	R-1-8	OS	-5
370	67633006	OSPH	CP	OS	-47
371	67633006	RN	CP	R-1-8	-46
372	67633043	OSPH	A	OS	0
373	67633043	RN	A	R-1-8	3
374	67633009	OSPH	R-1-5	OS	-1
375	67620086	PQP	R-1-8	PQP	239
376	67620086	OSPH	R-1-8	OS	-1
377	67620001	OSPH	R-1-8	OS	-1
378	67620002	OSPH	R-1-8	OS	-1
379	67620003	OSPH	R-1-8	OS	-1
380	67633010	OSPH	A	OS	0
381	67633010	RN	A	R-1-8	1
382	67633011	OSPH	A	OS	0
383	67633011	RN	A	R-1-8	1
384	67633012	OSPH	A	OS	0
385	67633012	RN	A	R-1-8	1
386	67633013	OSPH	A	OS	0
387	67633013	RN	A	R-1-8	1
388	67633014	OSPH	A	OS	0
389	67633014	RN	A	R-1-8	1
390	67633029	OSPH	R-1-5	OS	-3
391	67633030	OSPH	R-1-5	OS	-1
392	65905008	RN	A	R-1-8	1
393	65905021	RN	A	R-1-8	1
394	65905039	RN	A	R-1-8	1
395	67635013	OSPH	R-1-5	OS	-2
396	67635015	OSPH	R-1-5	OS	-1
397	67636001	OSPH	R-1-5	OS	-1
398	67636003	OSPH	R-1-5	OS	-1
399	67621043	OSPH	CN	OS	-132
400	67621080	OSPH	R-1-8	OS	-3
401	67636004	OSPH	R-1-5	OS	-10
402	65920040	OSPH	R-1-8	OS	-18
403	67621063	OSPH	R-1-8	OS	-1
404	67621064	OSPH	R-1-8	OS	-1

405	67656025	PQP	R-1-8	PQP	397
406	67656026	PQP	R-1-8	PQP	502
407	67637017	OSPH	R-1-5	OS	-2
408	65913015	PQP	R-1-8	PQP	982
409	67672037	OSPH	R-1-5	OS	-1
410	65931025	OSPH	R-1-8	OS	-1
411	67637018	PQP	R-1-5	PQP	590
412	67637019	PQP	R-1-5	PQP	317
413	67637014	OSPH	R-1-5	OS	-1
414	67637012	OSPH	R-1-5	OS	-1
415	67637021	OSPH	A	OS	0
416	66023016	PQP	R-1-8	PQP	911
417	66023017	RN	A	R-1-8	2
418	66023008	RN	A	R-1-8	1
419	66023010	RN	A	R-1-8	2
420	65921001	PQP	R-1-8	PQP	1825
421	66022135	OSPH	A	OS	0
422	66022135	OSPH	R-1-5	OS	-3
423	66023003	RN	A	R-1-8	5
424	66023015	RN	A	R-1-8	5
425	66021013	PQP	R-1-5	PQP	171
426	66021014	PQP	R-1-5	PQP	2006
427	66021016	PQP	A	PQP	2043
428	66021016	NCC	A	CP	2
429	66021023	PQP	R-1-5	PQP	8631
430	66021023	OSPH	A	OS	0
431	66021023	NCC	R-1-5	CP	1518
432	66020005	OSPH	R-1-5	OS	-47
433	66020008	OSPH	A	OS	0
434	64926026	OSPH	R-1-8	OS	-11
435	64927008	RN	A	R-1-8	2
436	64927013	RN	A	R-1-8	1
437	65409043	OSPH	R-1-5	OS	-2
438	65213015	RR	R-1-RR	R-1-2	3
439	65214006	RR	R-1-5	R-1-2	0
440	65214006	LH	R-1-5	R-1-RR	-1
441	65214007	RR	R-1-5	R-1-2	0
442	65214007	LH	R-1-5	R-1-RR	-1

443	65214008	LH	R-1-2	R-1-RR	-1
444	65214009	LH	R-1-2	R-1-RR	-1
445	65208017	OSPH	A	OS	0
446	64916100	PQP	R-1-8	PQP	196
447	64916101	PQP	R-1-8	PQP	155
448	64917001	PQP	R-1-8	PQP	980
449	65207022	RN	A	R-1-8	1
450	61238014	OH	A	OS	0
451	65208032	OSPH	A	OS	0
452	65208036	OSPH	A	OS	0
453	65208033	OSPH	A	OS	0
454	65208030	OSPH	A	OS	0
455	65226017	PQP	R-1-8	PQP	455
456	65226019	PQP	R-1-1	PQP	97
457	65226024	PQP	R-1-5	PQP	539
458	65210001	RR	R-1-RR	R-1-2	3
459	65210002	RR	R-1-RR	R-1-2	3
460	65210007	RR	R-1-RR	R-1-2	4
461	67605016	PQP	R-1-1	PQP	2915
462	67605016	PQP	A	PQP	1464
463	67605014	PQP	R-1-8	PQP	927
464	67605015	OSPH	R-1-8	OS	-10
465	65215013	RR	R-1-5	R-1-2	0
466	65215019	RR	R-1-5	R-1-2	0
467	65219007	RN	A	R-1-8	1
468	65219066	RN	A	R-1-8	1
469	65215042	RR	R-1-5	R-1-2	0
470	67635001	OSPH	R-1-5	OS	-1
471	67620077	OSPH	R-1-8	OS	-1
472	67620078	OSPH	R-1-8	OS	-1
473	67634001	OSPH	R-1-5	OS	-1
474	67634002	OSPH	A	OS	0
475	67634002	RN	A	R-1-8	1
476	67634002	RN	A	R-1-8	1
477	67634004	OSPH	A	OS	0
478	67634004	RN	A	R-1-8	1
479	67634004	RN	A	R-1-8	1
480	67623001	PQP	R-1-5	PQP	998

481	65420010	RN	A	R-1-8	2
482	65419003	LH	A	R-1-RR	1
483	65419004	LH	A	R-1-RR	1
484	67620040	OSPH	CN	OS	-15
485	67620041	OSPH	CN	OS	-28
486	67635003	OSPH	R-1-5	OS	-4
487	67635005	OSPH	R-1-5	OS	-1
488	67635007	OSPH	R-1-5	OS	-2
489	67635009	OSPH	R-1-2	OS	-1
490	67635010	OSPH	R-1-5	OS	-1
491	65421002	PQP	R-1-8	PQP	318
492	65421002	PQP	WATER	PQP	0
493	65419005	LH	R-1-5	R-1-RR	-1
494	65420011	OSPH	A	OS	0
495	65420011	RN	A	R-1-8	4
496	67637023	OSPH	R-1-5	OS	-1
497	67637022	OSPH	R-1-5	OS	-1
498	65904055	NCC	R-1-5	CP	660
499	65904054	NCC	A	CP	13
500	66021025	OSPH	A	OS	0
501	66022063	OSPH	A	OS	0
502	66022062	OSPH	A	OS	0
503	65932101	OSPH	CO	OS	1
504	65913014	OSPH	R-1-8	OS	-4
505	64926025	OSPH	R-1-8	OS	-1
506	66034049	RN	A	R-1-8	1
507	65215043	LH	R-1-5	R-1-RR	-8
508	64903005	PQP	R-1-8	PQP	3311
509	67605011	RN	A	R-1-8	1
510	65219068	RN	A	R-1-8	1
511	65234024	OH	R-1-5	OS	-1
512	65201008	LH	A	R-1-RR	1
513	64901061	PQP	R-1-8	PQP	188
514	67635011	OSPH	R-1-5	OS	-1
515	67635012	OSPH	R-1-5	OS	-1
516	65201007	LH	A	R-1-RR	1
517	66021022	PQP	R-1-5	PQP	384
518	66021022	NCC	R-1-5	CP	1605

A-14

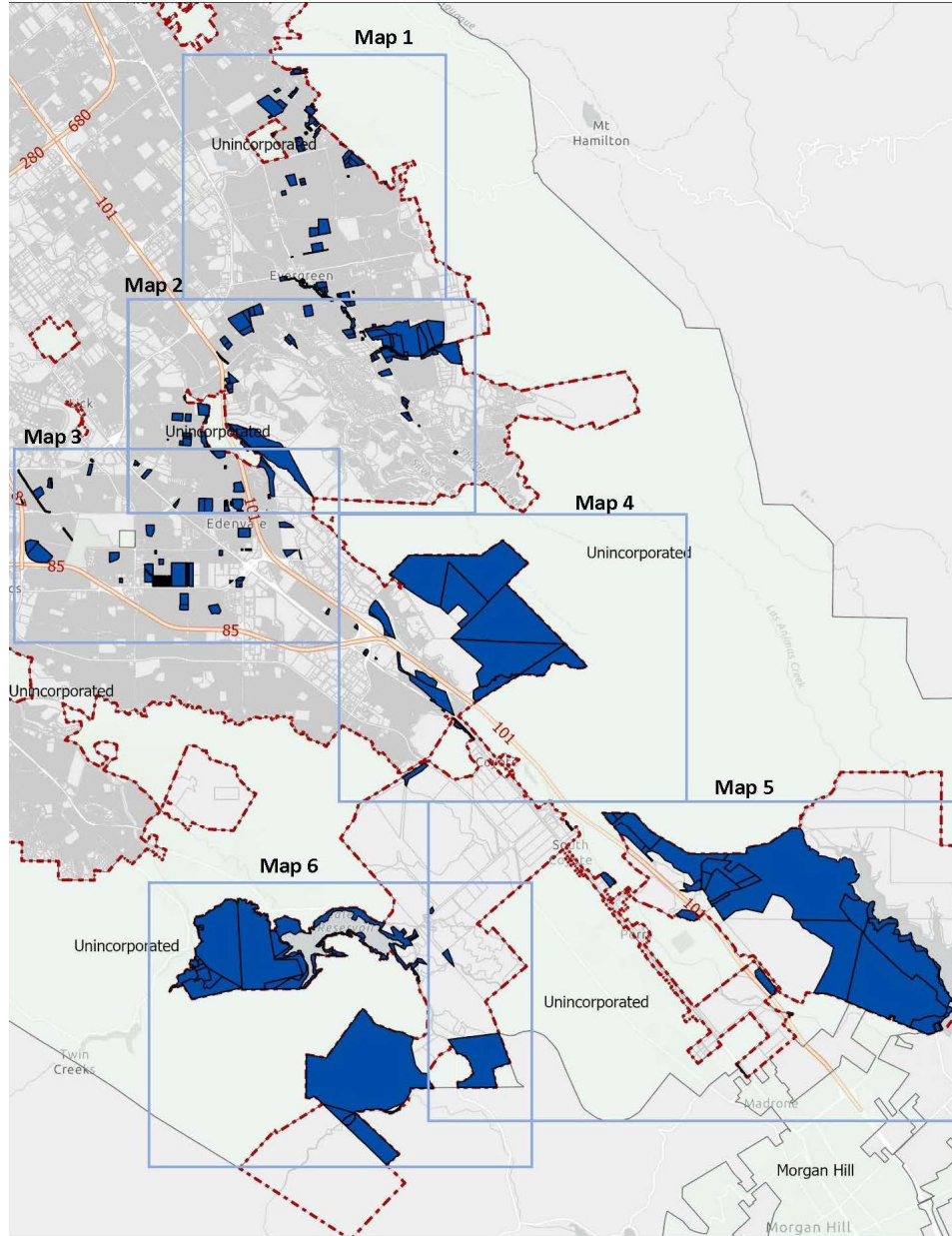
519	66022134	PQP	R-1-5	PQP	1
520	66022134	OSPH	A	OS	0
521	66022134	OSPH	R-1-5	OS	-1
522	65904???	NCC	A	CP	49
523	67633028	OSPH	R-1-5	OS	-1
524	67633017	OSPH	R-1-5	OS	-1
525	67633018	OSPH	R-1-5	OS	-1
526	67633019	OSPH	R-1-5	OS	-1
527	67634002	OSPH	A	OS	0
528	67634002	RN	A	R-1-8	1
529	67681024	OSPH	A	OS	0
530	67681002	OSPH	A	OS	0
531	67681004	OSPH	A	OS	0
532	66020009	OH	A	OS	0
533	66015003	OSPH	R-1-5	OS	-16
534	68002004	PQP	A	PQP	128
535	68002004	OSPH	A	OS	0
536	67681029	OSPH	A	OS	0
537	67681029	RN	A	R-1-8	1
538	66015001	OSPH	A	OS	0
539	66015002	OSPH	A	OS	0
540	66021018	OSPH	R-1-1	OS	-3
541	66021017	OSPH	R-1-5	OS	-3
542	67604016	OSPH	A	OS	0
543	67604047	OSPH	A	OS	0
544	67604052	OSPH	A	OS	0
545	67656056	OSPH	A	OS	0
546	67656056	RN	A	R-1-8	1
547	66037018	OSPH	A	OS	0
548	68002003	PQP	A	PQP	34
549	68002005	OSPH	A	OS	0
550	68002006	OSPH	A	OS	0
551	66020001	OSPH	R-1-1	OS	-5
552	66019010	OH	A	OS	0
553	67620045	OSPH	R-1-8	OS	-1
554	64909015	PROS	R-1-8	OS	-2

EXHIBIT "B"

EXISTING GENERAL PLAN DESIGNATION AND EXISTING AND PROPOSED ZONING DISTRICT MAPS

File Nos. C22-126, C22-127, C22-128, C22-129, C22-130, C22-131, C22-132, C22-133, C22-134, C22-135 and C23-096: The Zoning District Map is hereby amended as follows:

Key Map



B-1

T-52000 / 2048387_5
Council Agenda: 10.1(d)
Item No.: 10/17/2023

DRAFT – Contact the Office of the City Clerk at (408) 535-1260 or CityClerk@sanjoseca.gov for final document.

