



Housing

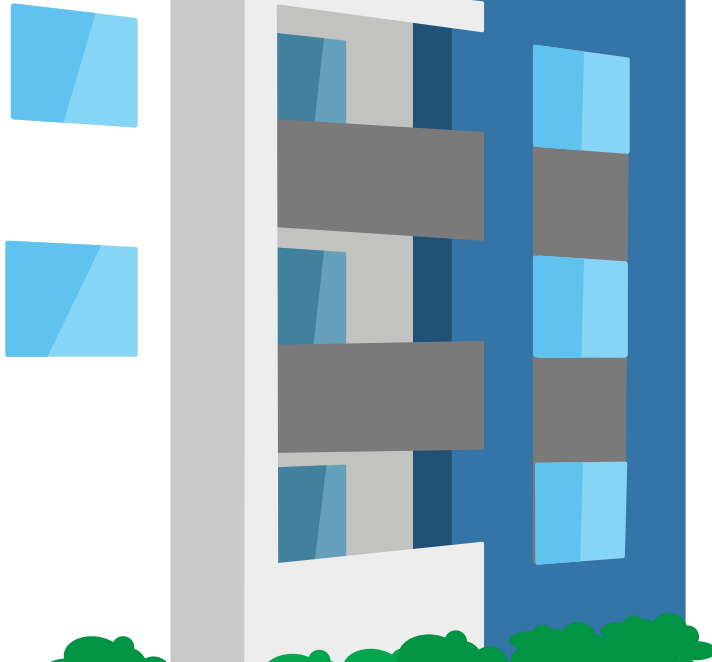
Employment Development & Rapid Rehousing Programs Contract Awards

Item 8.4

December 15, 2020

Ragan Henninger
Deputy Director

Kelly Hemphill
Homeless Response Manager



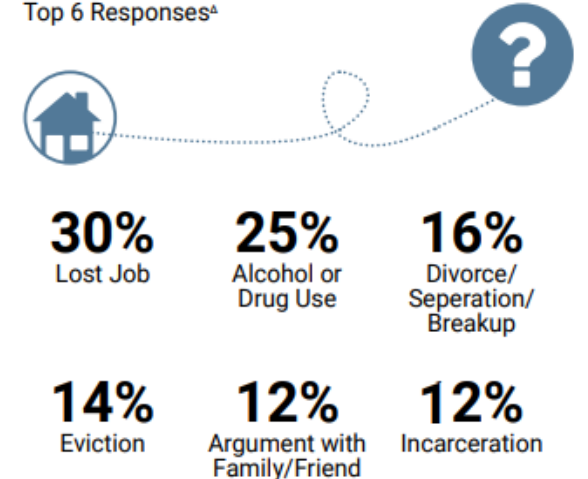
Request for Proposals

Employment Development & Housing Stability and Rapid Rehousing Programs

- Coordinate/leverage housing with job placement
- Redesign system of care
- Utilize Emergency Interim Housing and Bridge Housing Communities as referral pipelines

Primary Event or Condition That Led to Homelessness⁺

Top 6 Responses^A



Source: Applied Survey Research, 2019, Santa Clara County Homeless Census & Survey, Watsonville, CA.

+ Multiple response question, results may not add up to 100%.

What is Rapid Rehousing?

- 🏠 National best practice
- 🏠 Moderate service needs
- 🏠 Short-term rental assistance
- 🏠 Individualized case management



**HOUSED PEOPLE
ARE NOT HOMELESS**



Rapid Re-Housing (RRH) **ends homelessness** for families and individuals.

FIND LANDLORDS
& APARTMENTS

Help people quickly find housing within one month or less.

HELP PAY
FOR HOUSING

Help people pay for housing short term; longer-term help an option.

CONNECT
TO JOBS & SERVICES

Help access services so people can stay in housing.

The **Core Components** of Rapid Re-Housing help people **find** housing fast, help **pay** for housing, and **connect** to jobs and services.

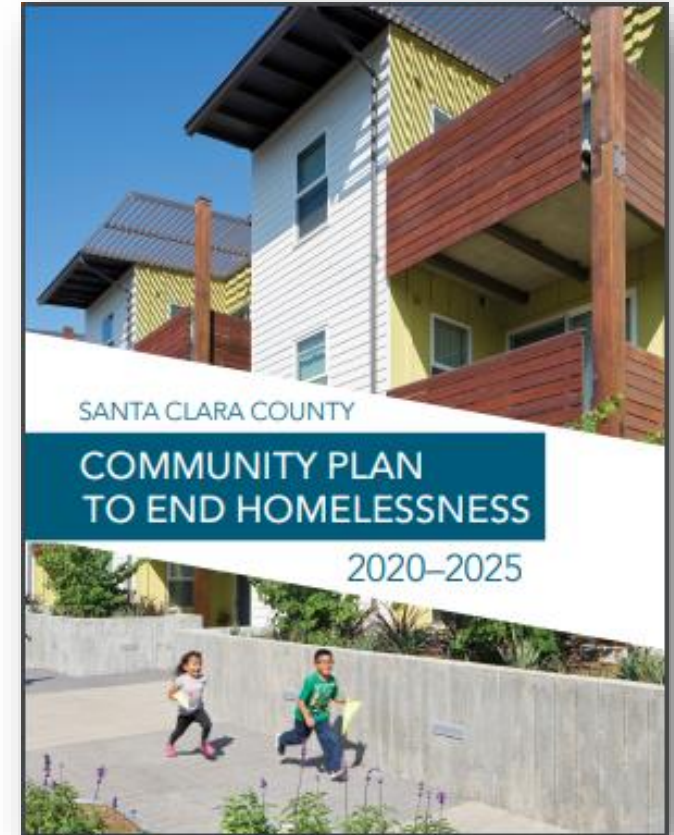
What is Employment Development?

- 🏠 **Create** permanent jobs for low/moderate income persons
- 🏠 **Job placement**
- 🏠 Assist to **retain** the job



Community Plan to End Homelessness

- 1. Address the root causes of homelessness through system and policy change**
 - ✓ Plan refers to Employment Development as tool to ensure all work-able clients have access to living wage employment
- 2. Expand homelessness prevention and housing programs to meet the need**
 - ✓ Plan lists housing 10,000 clients via Rapid Rehousing as target
- 3. Improve quality of life for unsheltered individuals and create healthy neighborhoods for all**



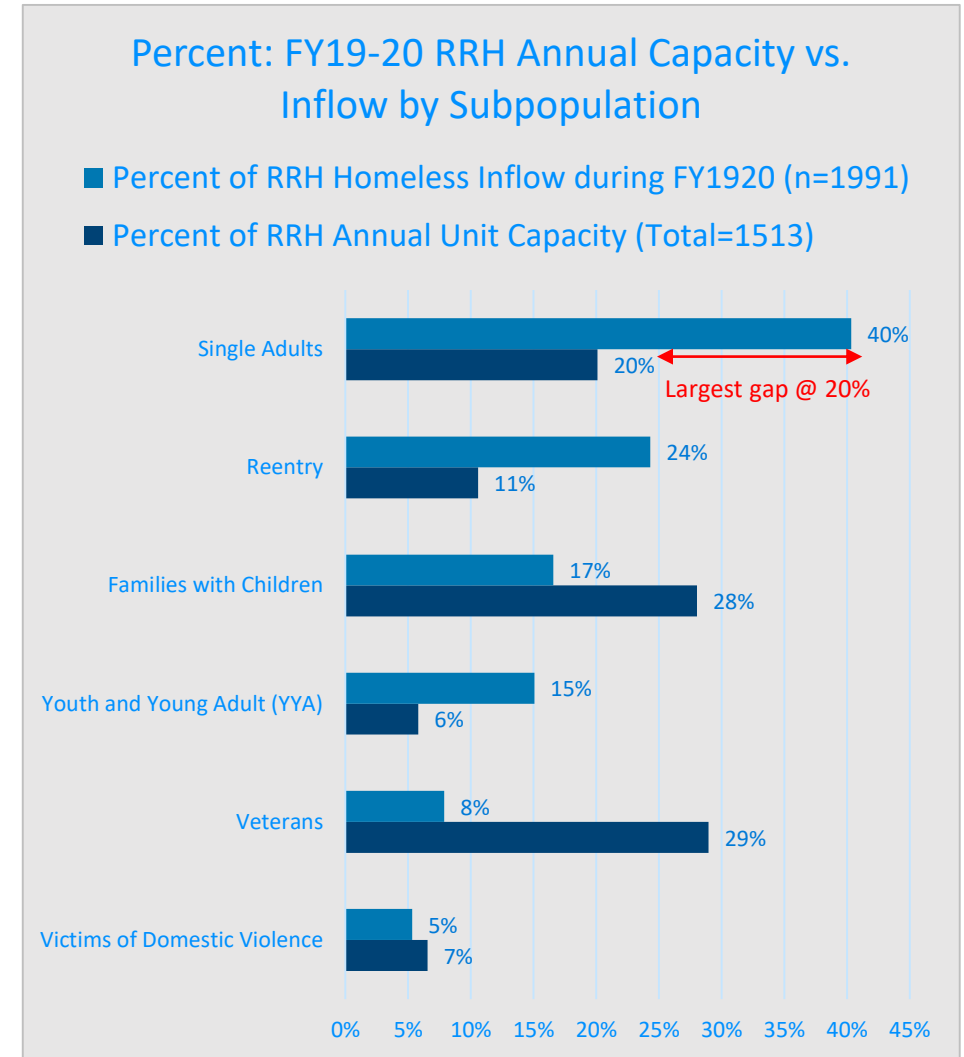
Target Population

🏠 Rapid Rehousing

- Analysis completed by County Office of Supportive Housing to determine greatest need
- Identified Single Adults and Youth and Young Adults

🏠 Employment Development

- Target low-income individuals enrolled in Rapid Rehousing programs and other housing assistance programs



RFP Awardees

Program	Agency	Key Notes	Funding Allocation
Rapid Rehousing	Bill Wilson Center	Collaboration with Next Door Target: 75 youth, young families, survivors of DV	\$800,000 (add \$1,630,346 in FY 21/22)
Rapid Rehousing	HomeFirst	Connected to City's interim housing BHC/EIH Target: 150 unduplicated single individuals	\$2,867,825
Rapid Rehousing	LifeMoves	Connected to SJ housing program via Motel Vouchers Target: 105 youth and individuals in young families	\$1,000,000 (add \$2,000,000 in FY 21/22)
Employment Development	JobTrain	Successful Destination: Home employment program Target: 72 adults	\$500,000
Employment Development	International Rescue Committee	Focus on refugee & immigrant services, local small, women-owned, and minority-owned businesses Target: 30 individuals	\$192,000

Rapid Rehousing Program Structure

- 🏠 Secure immediate shelter via Interim Housing Programs while searching for housing
- 🏠 Refer work-ready clients to employment development agencies
- 🏠 Transition clients to affordable permanent housing via options such as the City's Transition in Place units



Employment Development Structure

- 🏠 Enroll clients in Rapid Rehousing and other housing assistance programs
- 🏠 Secure long-term living wage employment via jobs in demand during and post-pandemic
- 🏠 Incorporate housing discussions into client engagement to ensure a holistic approach to housing stability





Housing

Employment Development & Rapid Rehousing Programs Contract Awards

Item 8.4

December 15, 2020

Ragan Henninger
Deputy Director

Kelly Hemphill
Homeless Response Manager

