

DRAFT

ORDINANCE NO. _____

AN ORDINANCE OF THE CITY OF SAN JOSE REZONING 132 PROPERTIES FROM R-M ZONING DISTRICT TO MUN MIXED USE NEIGHBORHOOD ZONING DISTRICT, 94 FROM R-1-1 SINGLE-FAMILY RESIDENTIAL ZONING DISTRICT TO OS OPEN SPACE ZONING DISTRICT, 48 FROM A AGRICULTURE ZONING DISTRICT TO OS OPEN SPACE ZONING DISTRICT, 40 FROM R-1-5 SINGLE-FAMILY RESIDENTIAL ZONING DISTRICT TO OS OPEN SPACE ZONING DISTRICT, 37 FROM R-1-8 SINGLE-FAMILY RESIDENTIAL ZONING DISTRICT TO OS OPEN SPACE ZONING DISTRICT, 36 FROM A AGRICULTURE ZONING DISTRICT TO R-1-8 SINGLE-FAMILY RESIDENTIAL ZONING DISTRICT, 33 FROM R-1-8 SINGLE-FAMILY RESIDENTIAL ZONING DISTRICT TO PQP PUBLIC/QUASI-PUBLIC ZONING DISTRICT, 27 FROM R-2 TO MUN MIXED USE NEIGHBORHOOD ZONING DISTRICT, 21 FROM A AGRICULTURE ZONING DISTRICT TO PQP PUBLIC/QUASI-PUBLIC ZONING DISTRICT, 11 FROM A AGRICULTURE ZONING DISTRICT TO R-1-2, NINE FROM R-1-5 SINGLE-FAMILY RESIDENTIAL ZONING DISTRICT TO PQP PUBLIC/QUASI-PUBLIC ZONING DISTRICT, EIGHT FROM A AGRICULTURE ZONING DISTRICT TO CP COMMERCIAL PEDESTRIAN ZONING DISTRICT, EIGHT FROM R-1-1 SINGLE-FAMILY RESIDENTIAL ZONING DISTRICT TO PQP PUBLIC/QUASI-PUBLIC ZONING DISTRICT, FIVE FROM R-1-5 SINGLE-FAMILY RESIDENTIAL ZONING DISTRICT TO CP COMMERCIAL PEDESTRIAN ZONING DISTRICT, FIVE FROM R-1-5 SINGLE-FAMILY RESIDENTIAL ZONING DISTRICT TO R-1-2, FOUR FROM R-1-8 SINGLE-FAMILY RESIDENTIAL ZONING DISTRICT TO MUN MIXED USE NEIGHBORHOOD ZONING DISTRICT, FOUR FROM R-1-RR TO R-1-2, FOUR FROM R-1-5 SINGLE-FAMILY RESIDENTIAL ZONING DISTRICT TO R-1-RR, FOUR FROM A AGRICULTURE ZONING DISTRICT TO R-1-RR, TWO FROM LI LIGHT INDUSTRIAL ZONING DISTRICT TO CP COMMERCIAL PEDESTRIAN ZONING DISTRICT, THREE FROM CN COMMERCIAL NEIGHBORHOOD ZONING DISTRICT TO OS OPEN SPACE ZONING DISTRICT, TWO FROM R-1-2 TO CIC COMBINED INDUSTRIAL/COMMERCIAL ZONING DISTRICT, TWO FROM IP INDUSTRIAL PARK ZONING DISTRICT TO OS OPEN SPACE ZONING DISTRICT, TWO FROM CP COMMERCIAL PEDESTRIAN ZONING DISTRICT TO R-1-8

SINGLE-FAMILY RESIDENTIAL ZONING DISTRICT, TWO FROM R-1-2 TO R-1-RR, ONE FROM R-1-5 SINGLE-FAMILY RESIDENTIAL ZONING DISTRICT TO A AGRICULTURE ZONING DISTRICT, ONE FROM IP INDUSTRIAL PARK ZONING DISTRICT TO CP COMMERCIAL PEDESTRIAN ZONING DISTRICT, ONE FROM R-1-1 SINGLE-FAMILY RESIDENTIAL ZONING DISTRICT TO LI LIGHT INDUSTRIAL ZONING DISTRICT, ONE FROM R-1-1 SINGLE-FAMILY RESIDENTIAL ZONING DISTRICT TO MUN MIXED USE NEIGHBORHOOD ZONING DISTRICT, ONE FROM CO COMMERCIAL OFFICE ZONING DISTRICT TO OS OPEN SPACE ZONING DISTRICT, ONE FROM CP COMMERCIAL PEDESTRIAN ZONING DISTRICT TO OS OPEN SPACE ZONING DISTRICT, ONE FROM R-1-2 TO OS OPEN SPACE ZONING DISTRICT, ONE FROM R-M ZONING DISTRICT TO OS OPEN SPACE ZONING DISTRICT, ONE FROM CN COMMERCIAL NEIGHBORHOOD ZONING DISTRICT TO PQP PUBLIC/QUASI-PUBLIC ZONING DISTRICT, AND ONE FROM WATER TO PQP PUBLIC/QUASI-PUBLIC ZONING DISTRICT, ALL LOCATED ON THOSE CERTAIN REAL PROPERTIES SITUATED WITHIN THE CITY OF SAN JOSE

WHEREAS, all rezoning proceedings required under the provisions of Chapter 20.120 of Title 20 of the San José Municipal Code have been duly had and taken with respect to the real property hereinafter described; and

WHEREAS, pursuant to Section 15168(c)(2) of the CEQA Guidelines, the City of San José has determined the proposed rezoning is pursuant to, in furtherance of and within the scope of the previously approved program evaluated in the Final Program Environmental Impact Report for the Envision San José 2040 General Plan (the “FEIR”), for which findings were adopted by City Council through its Resolution No. 76041 on November 1, 2011 and Supplemental Environmental Impact Report (the “SEIR”), through Resolution No. 77617, adopted by City Council on December 15, 2015, and Addenda thereto, and does not involve new significant effects beyond those analyzed in the FEIR and SEIR; and

WHEREAS, the City Council of the City of San José is the decision-making body for the proposed subject rezonings to the A Agriculture, CIC Combined Industrial/ Commercial, CP Commercial Pedestrian, LI Light Industrial, MUN Mixed Use Neighborhood, OS Open Space, PQP Public/Quasi-Public, R-1-2 and R-1-8 Single-Family Residential, and R-1-RR Rural Residential; and

WHEREAS, this Council of the City of San José has considered and approves the information contained in the FEIR and related City Council Resolution No. 76041, and in the SEIR and related City Council Resolution No. 77617, and Addenda thereto, and the determination of consistency therewith prior to acting upon or approving the subject rezoning; and

WHEREAS, the proposed rezonings are consistent with the designations of the sites in the applicable General Plan; and

WHEREAS, pursuant to Senate Bill 330, the proposed rezonings (File Nos. C22-126, C22-127, C22-128, C22-129, C22-130, C22-131, C22-132, C22-133, C22-134, C22-135, C23-096) would not decrease the residential units satisfying Senate Bill 330 and Senate Bill 940 requirements; the changes in zoning decrease the residential capacity on some properties by 18,585 residential units but increase the residential capacity on other properties by 58,726 residential units; therefore, there is still a surplus of 40,141 residential units available ($58,726 - 18,585 = 40,141$ units) complying with Senate Bill 330 and Senate Bill 940 requirements;

NOW, THEREFORE, BE IT ORDAINED BY THE COUNCIL OF THE CITY OF SAN JOSE:

SECTION 1. The recitals above are incorporated herein.

SECTION 2. All that real property hereinafter described in this section, hereinafter

referred to as "subject property," is hereby rezoned to the A Agriculture, CIC Combined Industrial/ Commercial, CP Commercial Pedestrian, LI Light Industrial, MUN Mixed Use Neighborhood, OS Open Space, PQP Public/Quasi-Public, R-1-2 and R-1-8 Single-Family Residential, R-1-RR Rural Residential.

The subject properties referred to in this section are all those real properties situated in the County of Santa Clara, State of California, described in Exhibit "A" and depicted in Exhibit "B" attached hereto and incorporated herein by this reference.

SECTION 3. The district map of the City is hereby amended accordingly.

SECTION 4. Any land development approval that is the subject of City File Nos. C22-126, C22-127, C22-128, C22-129, C22-130, C22-131, C22-132, C22-133, C22-134, C22-135 and C23-096 is subject to the operation of Part 2.75 of Chapter 15.12 of Title 15 of the San José Municipal Code. The issuance of a building permit to implement such land development approval may be suspended, conditioned or denied where the City Manager has determined that such action is necessary to remain within the aggregate operational capacity of the sanitary sewer system available to the City of San José or to meet the discharge standards of the sanitary sewer system imposed by the California Regional Water Quality Control Board for the San Francisco Bay Region.

//

//

//

//

//

PASSED FOR PUBLICATION of title this ____ day of _____, 2023 by the following vote:

AYES:

NOES:

ABSENT:

DISQUALIFIED:

MATT MAHAN
Mayor

ATTEST:

TONI J. TABER, CMC
City Clerk

EXHIBIT "A"

EXISTING GENERAL PLAN DESIGNATION AND EXISTING AND PROPOSED ZONING DISTRICT PARCEL LIST

File Nos. C22-126, C22-127, C22-128, C22-129, C22-130, C22-131, C22-132, C22-133, C22-134, C22-135 and C23-096: The following parcels specified by Assessor's Parcel Number (APN) are hereby rezoned from the zoning district specified below as "Existing Zoning" to the zoning district specified below as "Conforming Rezoning:"

| No. | APN | Existing General Plan Designation | Existing Zoning District | Proposed Zoning District | Density Change (Residential Units) |
|-----|----------|-----------------------------------|--------------------------|--------------------------|------------------------------------|
| 1 | 46214013 | OSPH | R-1-8 | OS | -2 |
| 2 | 46408001 | PQP | R-1-8 | PQP | 888 |
| 3 | 46404073 | OSPH | R-1-8 | OS | -5 |
| 4 | 46414012 | PQP | R-1-8 | PQP | 1 |
| 5 | 46429015 | PQP | R-1-1 | PQP | 3433 |
| 6 | 46429018 | PQP | A | PQP | 1193 |
| 7 | 46243005 | NCC | LI | CP | 94 |
| 8 | 46213023 | OSPH | R-1-8 | OS | -1 |
| 9 | 46414020 | PQP | R-1-1 | PQP | 138 |
| 10 | 69216037 | OSPH | R-1-8 | OS | -10 |
| 11 | 69217022 | PQP | R-1-8 | PQP | 1043 |
| 12 | 69029008 | MUN | R-2 | MUN | 6 |
| 13 | 69029009 | MUN | R-2 | MUN | 6 |
| 14 | 69029010 | MUN | R-2 | MUN | 6 |
| 15 | 69029011 | MUN | R-2 | MUN | 6 |
| 16 | 69029012 | MUN | R-2 | MUN | 6 |
| 17 | 69009006 | PQP | R-1-1 | PQP | 3932 |
| 18 | 69029001 | MUN | R-1-1 | MUN | 12 |
| 19 | 69029002 | MUN | R-2 | MUN | 6 |
| 20 | 69029003 | MUN | R-2 | MUN | 6 |
| 21 | 69029004 | MUN | R-2 | MUN | 6 |
| 22 | 69029020 | MUN | R-2 | MUN | 6 |
| 23 | 69029021 | MUN | R-2 | MUN | 5 |
| 24 | 69029022 | MUN | R-2 | MUN | 5 |
| 25 | 69029023 | MUN | R-2 | MUN | 5 |
| 26 | 69029024 | MUN | R-2 | MUN | 5 |

A-1

T-52000 / 2048387_5
Council Agenda: 10.1(d)
Item No.: 10/17/2023

DRAFT – Contact the Office of the City Clerk at (408) 535-1260 or CityClerk@sanjoseca.gov for final document.

| | | | | | |
|----|----------|------|-------|-------|------|
| 27 | 69029025 | MUN | R-2 | MUN | 6 |
| 28 | 69029026 | MUN | R-2 | MUN | 6 |
| 29 | 69009003 | MUN | R-M | MUN | -712 |
| 30 | 69029027 | MUN | R-2 | MUN | 6 |
| 31 | 69029028 | MUN | R-2 | MUN | 5 |
| 32 | 69029013 | MUN | R-2 | MUN | 6 |
| 33 | 69029014 | MUN | R-2 | MUN | 6 |
| 34 | 69029015 | MUN | R-2 | MUN | 6 |
| 35 | 69029016 | MUN | R-2 | MUN | 6 |
| 36 | 69029017 | MUN | R-2 | MUN | 6 |
| 37 | 69029018 | MUN | R-2 | MUN | 6 |
| 38 | 69029019 | MUN | R-2 | MUN | 6 |
| 39 | 49415006 | PQP | R-1-8 | PQP | 183 |
| 40 | 49415004 | OSPH | R-1-8 | OS | -4 |
| 41 | 49415005 | PQP | R-1-8 | PQP | 732 |
| 42 | 49415033 | OSPH | R-1-8 | OS | -7 |
| 43 | 46224052 | OSPH | R-1-1 | OS | -1 |
| 44 | 69029005 | MUN | R-2 | MUN | 6 |
| 45 | 69029006 | MUN | R-2 | MUN | 6 |
| 46 | 69029007 | MUN | R-2 | MUN | 6 |
| 47 | 49447101 | RN | CP | R-1-8 | -13 |
| 48 | 49417005 | PQP | R-1-8 | PQP | 876 |
| 49 | 69017033 | OSPH | R-M | OS | -266 |
| 50 | 49428061 | PQP | A | PQP | 474 |
| 51 | 46256049 | OSPH | R-1-8 | OS | -5 |
| 52 | 46256049 | OSPH | R-1-1 | OS | -1 |
| 53 | 46205113 | OSPH | R-1-1 | OS | -4 |
| 54 | 46205113 | OSPH | R-1-8 | OS | -6 |
| 55 | 68402007 | CIC | R-1-2 | CIC | -3 |
| 56 | 68402008 | LI | R-1-1 | LI | -10 |
| 57 | 69024C01 | MUN | R-M | MUN | -13 |
| 58 | 69024C02 | MUN | R-M | MUN | -13 |
| 59 | 69024C03 | MUN | R-M | MUN | -13 |
| 60 | 69024C04 | MUN | R-M | MUN | -13 |
| 61 | 69024C05 | MUN | R-M | MUN | -14 |
| 62 | 69024C09 | MUN | R-M | MUN | -15 |
| 63 | 69024C10 | MUN | R-M | MUN | -22 |
| 64 | 69024C11 | MUN | R-M | MUN | -12 |

| | | | | | |
|-----|----------|------|-------|-----|-----|
| 65 | 69024C12 | MUN | R-M | MUN | -12 |
| 66 | 69024C13 | MUN | R-M | MUN | -12 |
| 67 | 69024C14 | MUN | R-M | MUN | -12 |
| 68 | 69024C15 | MUN | R-M | MUN | -15 |
| 69 | 69022C02 | MUN | R-M | MUN | -11 |
| 70 | 69022C03 | MUN | R-M | MUN | -11 |
| 71 | 69022C04 | MUN | R-M | MUN | -11 |
| 72 | 69022C05 | MUN | R-M | MUN | -11 |
| 73 | 69022C06 | MUN | R-M | MUN | -12 |
| 74 | 69022C07 | MUN | R-M | MUN | -11 |
| 75 | 69022C08 | MUN | R-M | MUN | -12 |
| 76 | 69022C09 | MUN | R-M | MUN | -14 |
| 77 | 69022C10 | MUN | R-M | MUN | -11 |
| 78 | 69022C11 | MUN | R-M | MUN | -11 |
| 79 | 69022C12 | MUN | R-M | MUN | -11 |
| 80 | 68453019 | PQP | R-1-8 | PQP | 1 |
| 81 | 68453020 | PQP | R-1-8 | PQP | 1 |
| 82 | 68453021 | PQP | R-1-8 | PQP | 1 |
| 83 | 68453024 | PQP | R-1-8 | PQP | 1 |
| 84 | 68453032 | PQP | R-1-8 | PQP | 206 |
| 85 | 68509001 | PQP | R-1-8 | PQP | 920 |
| 86 | 46202022 | MUN | R-1-8 | MUN | 2 |
| 87 | 46202024 | MUN | R-1-8 | MUN | 11 |
| 88 | 46202021 | MUN | R-1-8 | MUN | 2 |
| 89 | 46202023 | MUN | R-1-8 | MUN | 3 |
| 90 | 46214013 | OSPH | R-1-8 | OS | -4 |
| 91 | 69022C13 | MUN | R-M | MUN | -15 |
| 92 | 69022C14 | MUN | R-M | MUN | -16 |
| 93 | 69021C01 | MUN | R-M | MUN | -11 |
| 94 | 69021C02 | MUN | R-M | MUN | -11 |
| 95 | 69021C03 | MUN | R-M | MUN | -11 |
| 96 | 69021C13 | MUN | R-M | MUN | -11 |
| 97 | 69021C14 | MUN | R-M | MUN | -11 |
| 98 | 69021C15 | MUN | R-M | MUN | -11 |
| 99 | 69021C16 | MUN | R-M | MUN | -11 |
| 100 | 69021C17 | MUN | R-M | MUN | -11 |
| 101 | 69021C18 | MUN | R-M | MUN | -11 |
| 102 | 69021C19 | MUN | R-M | MUN | -11 |

| | | | | | |
|-----|----------|------|-------|-----|-----|
| 103 | 69021C04 | MUN | R-M | MUN | -15 |
| 104 | 69021C05 | MUN | R-M | MUN | -18 |
| 105 | 69021C06 | MUN | R-M | MUN | -11 |
| 106 | 69021C07 | MUN | R-M | MUN | -11 |
| 107 | 69021C08 | MUN | R-M | MUN | -11 |
| 108 | 69021C09 | MUN | R-M | MUN | -15 |
| 109 | 69021C10 | MUN | R-M | MUN | -18 |
| 110 | 69021C11 | MUN | R-M | MUN | -18 |
| 111 | 69021C12 | MUN | R-M | MUN | -15 |
| 112 | 69021C22 | MUN | R-M | MUN | -11 |
| 113 | 69019C02 | MUN | R-M | MUN | -13 |
| 114 | 69019C03 | MUN | R-M | MUN | -13 |
| 115 | 69019C04 | MUN | R-M | MUN | -13 |
| 116 | 69019C05 | MUN | R-M | MUN | -13 |
| 117 | 69019C06 | MUN | R-M | MUN | -11 |
| 118 | 69019C07 | MUN | R-M | MUN | -11 |
| 119 | 69019C08 | MUN | R-M | MUN | -11 |
| 120 | 69019C09 | MUN | R-M | MUN | -11 |
| 121 | 69021C20 | MUN | R-M | MUN | -11 |
| 122 | 69021C21 | MUN | R-M | MUN | -11 |
| 123 | 69019C10 | MUN | R-M | MUN | -11 |
| 124 | 69019C11 | MUN | R-M | MUN | -11 |
| 125 | 69019C12 | MUN | R-M | MUN | -11 |
| 126 | 69019C13 | MUN | R-M | MUN | -11 |
| 127 | 69019C14 | MUN | R-M | MUN | -11 |
| 128 | 69019C15 | MUN | R-M | MUN | -11 |
| 129 | 69020C01 | MUN | R-M | MUN | -11 |
| 130 | 69020C02 | MUN | R-M | MUN | -12 |
| 131 | 69020C03 | MUN | R-M | MUN | -12 |
| 132 | 69020C04 | MUN | R-M | MUN | -26 |
| 133 | 69020C05 | MUN | R-M | MUN | -15 |
| 134 | 69020C06 | MUN | R-M | MUN | -12 |
| 135 | 46210007 | PQP | R-1-8 | PQP | 852 |
| 136 | 46211061 | OSPH | R-1-8 | OS | -4 |
| 137 | 69022C01 | MUN | R-M | MUN | -19 |
| 138 | 69020C07 | MUN | R-M | MUN | -11 |
| 139 | 69020C08 | MUN | R-M | MUN | -11 |
| 140 | 69020C09 | MUN | R-M | MUN | -11 |

| | | | | | |
|-----|----------|-----|-------|-------|------|
| 141 | 69020C10 | MUN | R-M | MUN | -11 |
| 142 | 69020C11 | MUN | R-M | MUN | -11 |
| 143 | 69020C12 | MUN | R-M | MUN | -11 |
| 144 | 69020C13 | MUN | R-M | MUN | -11 |
| 145 | 69020C14 | MUN | R-M | MUN | -11 |
| 146 | 69020C15 | MUN | R-M | MUN | -11 |
| 147 | 69020C16 | MUN | R-M | MUN | -11 |
| 148 | 69019C01 | MUN | R-M | MUN | -23 |
| 149 | 69020C17 | MUN | R-M | MUN | -17 |
| 150 | 69020C18 | MUN | R-M | MUN | -11 |
| 151 | 69020C19 | MUN | R-M | MUN | -11 |
| 152 | 69023C10 | MUN | R-M | MUN | -11 |
| 153 | 69023C11 | MUN | R-M | MUN | -11 |
| 154 | 69023C12 | MUN | R-M | MUN | -11 |
| 155 | 69023C13 | MUN | R-M | MUN | -11 |
| 156 | 46261C01 | MUN | R-M | MUN | -249 |
| 157 | 69020C20 | MUN | R-M | MUN | -11 |
| 158 | 69020C21 | MUN | R-M | MUN | -11 |
| 159 | 69023C01 | MUN | R-M | MUN | -11 |
| 160 | 69023C02 | MUN | R-M | MUN | -11 |
| 161 | 69023C03 | MUN | R-M | MUN | -11 |
| 162 | 68402011 | CIC | R-1-2 | CIC | -2 |
| 163 | 69023C04 | MUN | R-M | MUN | -11 |
| 164 | 69023C05 | MUN | R-M | MUN | -11 |
| 165 | 69023C06 | MUN | R-M | MUN | -14 |
| 166 | 69023C07 | MUN | R-M | MUN | -14 |
| 167 | 69023C08 | MUN | R-M | MUN | -14 |
| 168 | 69023C09 | MUN | R-M | MUN | -11 |
| 169 | 69024C06 | MUN | R-M | MUN | -14 |
| 170 | 69024C07 | MUN | R-M | MUN | -13 |
| 171 | 69024C08 | MUN | R-M | MUN | -23 |
| 172 | 69017085 | RN | A | R-1-8 | 2 |
| 173 | 69033C03 | MUN | R-M | MUN | -513 |
| 174 | 69033C02 | MUN | R-M | MUN | -556 |
| 175 | 69002009 | NCC | IP | CP | 61 |
| 176 | 69001005 | NCC | LI | CP | 85 |
| 177 | 69001006 | PQP | R-1-1 | PQP | 371 |

| | | | | | |
|-----|----------|------|-------|-------|------|
| 178 | 69001006 | PQP | CN | PQP | -10 |
| 179 | 49415053 | OSPH | R-1-8 | OS | -16 |
| 180 | 49416012 | OSPH | R-1-8 | OS | -5 |
| 181 | 69006061 | PQP | R-1-1 | PQP | 177 |
| 182 | 49416003 | OSPH | R-1-8 | OS | -16 |
| 183 | 69207062 | PQP | R-1-8 | PQP | 975 |
| 184 | 67802034 | OSPH | R-1-5 | OS | -124 |
| 185 | 67802026 | OSPH | R-1-5 | OS | -2 |
| 186 | 67802009 | OSPH | R-1-1 | OS | -39 |
| 187 | 67803006 | NCC | A | CP | 24 |
| 188 | 67804004 | OSPH | R-1-1 | OS | -5 |
| 189 | 67804010 | OSPH | R-1-1 | OS | -5 |
| 190 | 67804011 | OSPH | R-1-1 | OS | -74 |
| 191 | 67847091 | OSPH | R-1-8 | OS | -3 |
| 192 | 67903001 | OSPH | R-1-8 | OS | -11 |
| 193 | 67839089 | OSPH | R-1-8 | OS | -2 |
| 194 | 71217012 | OH | R-1-1 | OS | -466 |
| 195 | 68439010 | MUN | R-M | MUN | -11 |
| 196 | 68439011 | MUN | R-M | MUN | -11 |
| 197 | 68439012 | MUN | R-M | MUN | -25 |
| 198 | 68439013 | MUN | R-M | MUN | -25 |
| 199 | 68439014 | MUN | R-M | MUN | -25 |
| 200 | 67851053 | RN | A | R-1-8 | 3 |
| 201 | 68419028 | PQP | R-1-8 | PQP | 981 |
| 202 | 68415006 | PQP | A | PQP | 47 |
| 203 | 70822002 | OH | R-1-5 | OS | -6 |
| 204 | 67803036 | NCC | A | CP | 198 |
| 205 | 67803036 | NCC | R-1-5 | CP | 64 |
| 206 | 72506002 | OH | R-1-1 | OS | -1 |
| 207 | 68433045 | MUN | R-M | MUN | -10 |
| 208 | 68433046 | MUN | R-M | MUN | -10 |
| 209 | 68434049 | MUN | R-M | MUN | -11 |
| 210 | 68434050 | MUN | R-M | MUN | -10 |
| 211 | 68434051 | MUN | R-M | MUN | -9 |
| 212 | 68434052 | MUN | R-M | MUN | -10 |
| 213 | 68434053 | MUN | R-M | MUN | -10 |
| 214 | 68434027 | MUN | R-M | MUN | -9 |

| | | | | | |
|-----|----------|------|-------|-------|------|
| 215 | 68434028 | MUN | R-M | MUN | -9 |
| 216 | 68433047 | MUN | R-M | MUN | -11 |
| 217 | 68433048 | MUN | R-M | MUN | -10 |
| 218 | 68433049 | MUN | R-M | MUN | -10 |
| 219 | 68433050 | MUN | R-M | MUN | -11 |
| 220 | 68433051 | MUN | R-M | MUN | -12 |
| 221 | 68433052 | MUN | R-M | MUN | -14 |
| 222 | 68433053 | MUN | R-M | MUN | -16 |
| 223 | 68437002 | PQP | R-1-8 | PQP | 1204 |
| 224 | 68433055 | MUN | R-M | MUN | -10 |
| 225 | 68433056 | MUN | R-M | MUN | -13 |
| 226 | 68433057 | MUN | R-M | MUN | -12 |
| 227 | 68433058 | MUN | R-M | MUN | -12 |
| 228 | 68433059 | MUN | R-M | MUN | -11 |
| 229 | 68433054 | MUN | R-M | MUN | -10 |
| 230 | 68434005 | OSPH | R-1-8 | OS | -22 |
| 231 | 68433087 | MUN | R-M | MUN | -181 |
| 232 | 67878030 | OSPH | R-1-5 | OS | -1 |
| 233 | 70822001 | OH | R-1-5 | OS | -9 |
| 234 | 70829002 | OSPH | R-1-5 | OS | -2 |
| 235 | 74212008 | OH | R-1-1 | OS | -21 |
| 236 | 72512015 | OSPH | R-1-1 | OS | -4 |
| 237 | 71209009 | A | R-1-5 | A | -4 |
| 238 | 74219001 | OH | R-1-1 | OS | -210 |
| 239 | 71203038 | OH | R-1-1 | OS | -15 |
| 240 | 72510018 | OSPH | R-1-1 | OS | -22 |
| 241 | 72510018 | OH | R-1-1 | OS | -1 |
| 242 | 72506001 | OH | R-1-1 | OS | -37 |
| 243 | 70633066 | RN | A | R-1-8 | 1 |
| 244 | 68415049 | PQP | A | PQP | 3 |
| 245 | 67903003 | OSPH | IP | OS | 1 |
| 246 | 67904001 | OSPH | R-1-1 | OS | -13 |
| 247 | 67905001 | OSPH | R-1-1 | OS | -43 |
| 248 | 67902014 | OSPH | IP | OS | 1 |
| 249 | 67905006 | OSPH | R-1-1 | OS | -172 |
| 250 | 67905008 | OSPH | R-1-1 | OS | -6 |
| 251 | 67906003 | OSPH | R-1-1 | OS | -3 |
| 252 | 74212007 | OH | R-1-1 | OS | -5 |

A-7

| | | | | | |
|-----|----------|------|-------|-----|-------|
| 253 | 74233008 | OH | R-1-1 | OS | -11 |
| 254 | 74233009 | OH | R-1-1 | OS | -6 |
| 255 | 49462002 | OSPH | R-1-8 | OS | -1 |
| 256 | 49466004 | OSPH | R-1-8 | OS | -27 |
| 257 | 74209047 | OH | R-1-1 | OS | -8 |
| 258 | 74204024 | OH | R-1-1 | OS | -1 |
| 259 | 68425001 | PQP | R-1-1 | PQP | 955 |
| 260 | 74209049 | OH | R-1-1 | OS | -645 |
| 261 | 74209009 | OH | R-1-1 | OS | -5 |
| 262 | 74233006 | OH | R-1-1 | OS | -1 |
| 263 | 74233007 | OH | R-1-1 | OS | -1 |
| 264 | 74233002 | OH | R-1-1 | OS | -4 |
| 265 | 74202022 | OH | R-1-1 | OS | -48 |
| 266 | 74202023 | OH | R-1-1 | OS | -35 |
| 267 | 74202025 | OH | R-1-1 | OS | -153 |
| 268 | 74209050 | OH | R-1-1 | OS | -1 |
| 269 | 74204008 | OH | R-1-1 | OS | -1 |
| 270 | 74204014 | OH | R-1-1 | OS | -12 |
| 271 | 74203013 | OH | R-1-1 | OS | -1 |
| 272 | 74203016 | OH | R-1-1 | OS | -1 |
| 273 | 74204023 | OH | R-1-1 | OS | -1 |
| 274 | 74204022 | OH | R-1-1 | OS | -1 |
| 275 | 74209051 | OH | R-1-1 | OS | -4 |
| 276 | 74209052 | OH | R-1-1 | OS | -3 |
| 277 | 67801004 | OH | R-1-1 | OS | -768 |
| 278 | 49466006 | OSPH | R-1-8 | OS | -4 |
| 279 | 67811003 | OH | R-1-1 | OS | -1005 |
| 280 | 67811002 | OH | R-1-1 | OS | -334 |
| 281 | 72952019 | OH | R-1-1 | OS | -10 |
| 282 | 72952008 | OH | R-1-1 | OS | -1807 |
| 283 | 72952018 | OH | R-1-1 | OS | -21 |
| 284 | 68425001 | PQP | R-1-8 | PQP | 1311 |
| 285 | 72952028 | OH | R-1-1 | OS | -66 |
| 286 | 72952027 | OH | R-1-1 | OS | -278 |
| 287 | 72952022 | OH | R-1-1 | OS | -151 |
| 288 | 72952026 | OH | R-1-1 | OS | -30 |
| 289 | 70832002 | OH | R-1-1 | OS | -4 |
| 290 | 72957003 | OH | R-1-1 | OS | -178 |

| | | | | | |
|-----|----------|----|-------|-------|-------|
| 291 | 72957001 | OH | R-1-1 | OS | -88 |
| 292 | 74212008 | OH | R-1-1 | OS | -44 |
| 293 | 67801018 | OH | R-1-1 | OS | -598 |
| 294 | 74202026 | OH | R-1-1 | OS | -39 |
| 295 | 74210003 | OH | R-1-1 | OS | -236 |
| 296 | 74210003 | OH | R-1-1 | OS | -10 |
| 297 | 74210003 | OH | R-1-1 | OS | -11 |
| 298 | 74209041 | OH | R-1-1 | OS | -204 |
| 299 | 74209037 | OH | R-1-1 | OS | -1 |
| 300 | 74209043 | OH | R-1-1 | OS | -79 |
| 301 | 74212009 | OH | R-1-1 | OS | -1835 |
| 302 | 74209036 | OH | R-1-1 | OS | -1 |
| 303 | 74209042 | OH | R-1-1 | OS | -57 |
| 304 | 74209046 | OH | R-1-1 | OS | -708 |
| 305 | 72951004 | OH | R-1-1 | OS | -609 |
| 306 | 62714026 | OH | R-1-1 | OS | -1 |
| 307 | 62714009 | OH | R-1-1 | OS | -24 |
| 308 | 72948004 | OH | R-1-1 | OS | -523 |
| 309 | 72948006 | OH | R-1-1 | OS | -144 |
| 310 | 71203092 | OH | R-1-1 | OS | -1 |
| 311 | 72952004 | OH | R-1-1 | OS | -1 |
| 312 | 72950003 | OH | R-1-1 | OS | -51 |
| 313 | 72950001 | OH | R-1-1 | OS | -3 |
| 314 | 72948001 | OH | R-1-1 | OS | -86 |
| 315 | 72948002 | OH | R-1-1 | OS | -110 |
| 316 | 72948005 | OH | R-1-1 | OS | -1069 |
| 317 | 72952017 | OH | R-1-1 | OS | -2 |
| 318 | 72952012 | OH | R-1-1 | OS | -30 |
| 319 | 72952010 | OH | R-1-1 | OS | -146 |
| 320 | 72952009 | OH | R-1-1 | OS | -34 |
| 321 | 72952011 | OH | R-1-1 | OS | -138 |
| 322 | 72952014 | OH | R-1-1 | OS | -16 |
| 323 | 72835005 | OH | R-1-1 | OS | -3 |
| 324 | 70830001 | OH | R-1-1 | OS | -32 |
| 325 | 72948001 | OH | R-1-1 | OS | -9 |
| 326 | 72948001 | OH | R-1-1 | OS | -9 |
| 327 | 67909004 | RR | A | R-1-2 | 4 |
| 328 | 67909005 | RR | A | R-1-2 | 8 |

| | | | | | |
|-----|----------|------|-------|-------|-----|
| 329 | 66005003 | OSPH | R-1-1 | OS | -1 |
| 330 | 66007003 | OSPH | R-1-5 | OS | -1 |
| 331 | 66008010 | OSPH | A | OS | 0 |
| 332 | 66008010 | RR | A | R-1-2 | 5 |
| 333 | 68002019 | PQP | A | PQP | 678 |
| 334 | 67907002 | OSPH | A | OS | 0 |
| 335 | 66008005 | OSPH | A | OS | 0 |
| 336 | 66008005 | RR | A | R-1-2 | 1 |
| 337 | 68003008 | RR | A | R-1-2 | 9 |
| 338 | 68003008 | OSPH | A | OS | 0 |
| 339 | 68003008 | RR | A | R-1-2 | 1 |
| 340 | 67910002 | RR | A | R-1-2 | 1 |
| 341 | 67910003 | RR | A | R-1-2 | 1 |
| 342 | 67910004 | RR | A | R-1-2 | 5 |
| 343 | 67910005 | RR | A | R-1-2 | 12 |
| 344 | 66006080 | OSPH | A | OS | 0 |
| 345 | 66006080 | RR | A | R-1-2 | 1 |
| 346 | 66008006 | OSPH | A | OS | 0 |
| 347 | 67907001 | OSPH | A | OS | 0 |
| 348 | 67906004 | OSPH | A | OS | 0 |
| 349 | 68067001 | PQP | A | PQP | 1 |
| 350 | 68067002 | PQP | A | PQP | 1 |
| 351 | 68067003 | PQP | A | PQP | 1 |
| 352 | 68067004 | PQP | A | PQP | 1 |
| 353 | 68067005 | PQP | A | PQP | 1 |
| 354 | 68067006 | PQP | A | PQP | 1 |
| 355 | 68067007 | PQP | A | PQP | 1 |
| 356 | 68067008 | PQP | A | PQP | 1 |
| 357 | 68067082 | PQP | A | PQP | 1 |
| 358 | 68067081 | PQP | A | PQP | 1 |
| 359 | 68067080 | PQP | A | PQP | 1 |
| 360 | 68067079 | PQP | A | PQP | 1 |
| 361 | 64918027 | PQP | R-1-8 | PQP | 199 |
| 362 | 65904011 | NCC | A | CP | 77 |
| 363 | 65904014 | NCC | A | CP | 32 |
| 364 | 65904056 | NCC | A | CP | 221 |
| 365 | 65904056 | NCC | R-1-5 | CP | 219 |
| 366 | 65905056 | RN | A | R-1-8 | 1 |

| | | | | | |
|-----|----------|------|-------|-------|------|
| 367 | 65905007 | RN | A | R-1-8 | 1 |
| 368 | 67620089 | PQP | R-1-8 | PQP | 1 |
| 369 | 67620089 | OSPH | R-1-8 | OS | -5 |
| 370 | 67633006 | OSPH | CP | OS | -47 |
| 371 | 67633006 | RN | CP | R-1-8 | -46 |
| 372 | 67633043 | OSPH | A | OS | 0 |
| 373 | 67633043 | RN | A | R-1-8 | 3 |
| 374 | 67633009 | OSPH | R-1-5 | OS | -1 |
| 375 | 67620086 | PQP | R-1-8 | PQP | 239 |
| 376 | 67620086 | OSPH | R-1-8 | OS | -1 |
| 377 | 67620001 | OSPH | R-1-8 | OS | -1 |
| 378 | 67620002 | OSPH | R-1-8 | OS | -1 |
| 379 | 67620003 | OSPH | R-1-8 | OS | -1 |
| 380 | 67633010 | OSPH | A | OS | 0 |
| 381 | 67633010 | RN | A | R-1-8 | 1 |
| 382 | 67633011 | OSPH | A | OS | 0 |
| 383 | 67633011 | RN | A | R-1-8 | 1 |
| 384 | 67633012 | OSPH | A | OS | 0 |
| 385 | 67633012 | RN | A | R-1-8 | 1 |
| 386 | 67633013 | OSPH | A | OS | 0 |
| 387 | 67633013 | RN | A | R-1-8 | 1 |
| 388 | 67633014 | OSPH | A | OS | 0 |
| 389 | 67633014 | RN | A | R-1-8 | 1 |
| 390 | 67633029 | OSPH | R-1-5 | OS | -3 |
| 391 | 67633030 | OSPH | R-1-5 | OS | -1 |
| 392 | 65905008 | RN | A | R-1-8 | 1 |
| 393 | 65905021 | RN | A | R-1-8 | 1 |
| 394 | 65905039 | RN | A | R-1-8 | 1 |
| 395 | 67635013 | OSPH | R-1-5 | OS | -2 |
| 396 | 67635015 | OSPH | R-1-5 | OS | -1 |
| 397 | 67636001 | OSPH | R-1-5 | OS | -1 |
| 398 | 67636003 | OSPH | R-1-5 | OS | -1 |
| 399 | 67621043 | OSPH | CN | OS | -132 |
| 400 | 67621080 | OSPH | R-1-8 | OS | -3 |
| 401 | 67636004 | OSPH | R-1-5 | OS | -10 |
| 402 | 65920040 | OSPH | R-1-8 | OS | -18 |
| 403 | 67621063 | OSPH | R-1-8 | OS | -1 |
| 404 | 67621064 | OSPH | R-1-8 | OS | -1 |

| | | | | | |
|-----|----------|------|--------|--------|------|
| 405 | 67656025 | PQP | R-1-8 | PQP | 397 |
| 406 | 67656026 | PQP | R-1-8 | PQP | 502 |
| 407 | 67637017 | OSPH | R-1-5 | OS | -2 |
| 408 | 65913015 | PQP | R-1-8 | PQP | 982 |
| 409 | 67672037 | OSPH | R-1-5 | OS | -1 |
| 410 | 65931025 | OSPH | R-1-8 | OS | -1 |
| 411 | 67637018 | PQP | R-1-5 | PQP | 590 |
| 412 | 67637019 | PQP | R-1-5 | PQP | 317 |
| 413 | 67637014 | OSPH | R-1-5 | OS | -1 |
| 414 | 67637012 | OSPH | R-1-5 | OS | -1 |
| 415 | 67637021 | OSPH | A | OS | 0 |
| 416 | 66023016 | PQP | R-1-8 | PQP | 911 |
| 417 | 66023017 | RN | A | R-1-8 | 2 |
| 418 | 66023008 | RN | A | R-1-8 | 1 |
| 419 | 66023010 | RN | A | R-1-8 | 2 |
| 420 | 65921001 | PQP | R-1-8 | PQP | 1825 |
| 421 | 66022135 | OSPH | A | OS | 0 |
| 422 | 66022135 | OSPH | R-1-5 | OS | -3 |
| 423 | 66023003 | RN | A | R-1-8 | 5 |
| 424 | 66023015 | RN | A | R-1-8 | 5 |
| 425 | 66021013 | PQP | R-1-5 | PQP | 171 |
| 426 | 66021014 | PQP | R-1-5 | PQP | 2006 |
| 427 | 66021016 | PQP | A | PQP | 2043 |
| 428 | 66021016 | NCC | A | CP | 2 |
| 429 | 66021023 | PQP | R-1-5 | PQP | 8631 |
| 430 | 66021023 | OSPH | A | OS | 0 |
| 431 | 66021023 | NCC | R-1-5 | CP | 1518 |
| 432 | 66020005 | OSPH | R-1-5 | OS | -47 |
| 433 | 66020008 | OSPH | A | OS | 0 |
| 434 | 64926026 | OSPH | R-1-8 | OS | -11 |
| 435 | 64927008 | RN | A | R-1-8 | 2 |
| 436 | 64927013 | RN | A | R-1-8 | 1 |
| 437 | 65409043 | OSPH | R-1-5 | OS | -2 |
| 438 | 65213015 | RR | R-1-RR | R-1-2 | 3 |
| 439 | 65214006 | RR | R-1-5 | R-1-2 | 0 |
| 440 | 65214006 | LH | R-1-5 | R-1-RR | -1 |
| 441 | 65214007 | RR | R-1-5 | R-1-2 | 0 |
| 442 | 65214007 | LH | R-1-5 | R-1-RR | -1 |

| | | | | | |
|-----|----------|------|--------|--------|------|
| 443 | 65214008 | LH | R-1-2 | R-1-RR | -1 |
| 444 | 65214009 | LH | R-1-2 | R-1-RR | -1 |
| 445 | 65208017 | OSPH | A | OS | 0 |
| 446 | 64916100 | PQP | R-1-8 | PQP | 196 |
| 447 | 64916101 | PQP | R-1-8 | PQP | 155 |
| 448 | 64917001 | PQP | R-1-8 | PQP | 980 |
| 449 | 65207022 | RN | A | R-1-8 | 1 |
| 450 | 61238014 | OH | A | OS | 0 |
| 451 | 65208032 | OSPH | A | OS | 0 |
| 452 | 65208036 | OSPH | A | OS | 0 |
| 453 | 65208033 | OSPH | A | OS | 0 |
| 454 | 65208030 | OSPH | A | OS | 0 |
| 455 | 65226017 | PQP | R-1-8 | PQP | 455 |
| 456 | 65226019 | PQP | R-1-1 | PQP | 97 |
| 457 | 65226024 | PQP | R-1-5 | PQP | 539 |
| 458 | 65210001 | RR | R-1-RR | R-1-2 | 3 |
| 459 | 65210002 | RR | R-1-RR | R-1-2 | 3 |
| 460 | 65210007 | RR | R-1-RR | R-1-2 | 4 |
| 461 | 67605016 | PQP | R-1-1 | PQP | 2915 |
| 462 | 67605016 | PQP | A | PQP | 1464 |
| 463 | 67605014 | PQP | R-1-8 | PQP | 927 |
| 464 | 67605015 | OSPH | R-1-8 | OS | -10 |
| 465 | 65215013 | RR | R-1-5 | R-1-2 | 0 |
| 466 | 65215019 | RR | R-1-5 | R-1-2 | 0 |
| 467 | 65219007 | RN | A | R-1-8 | 1 |
| 468 | 65219066 | RN | A | R-1-8 | 1 |
| 469 | 65215042 | RR | R-1-5 | R-1-2 | 0 |
| 470 | 67635001 | OSPH | R-1-5 | OS | -1 |
| 471 | 67620077 | OSPH | R-1-8 | OS | -1 |
| 472 | 67620078 | OSPH | R-1-8 | OS | -1 |
| 473 | 67634001 | OSPH | R-1-5 | OS | -1 |
| 474 | 67634002 | OSPH | A | OS | 0 |
| 475 | 67634002 | RN | A | R-1-8 | 1 |
| 476 | 67634002 | RN | A | R-1-8 | 1 |
| 477 | 67634004 | OSPH | A | OS | 0 |
| 478 | 67634004 | RN | A | R-1-8 | 1 |
| 479 | 67634004 | RN | A | R-1-8 | 1 |
| 480 | 67623001 | PQP | R-1-5 | PQP | 998 |

| | | | | | |
|-----|----------|------|-------|--------|------|
| 481 | 65420010 | RN | A | R-1-8 | 2 |
| 482 | 65419003 | LH | A | R-1-RR | 1 |
| 483 | 65419004 | LH | A | R-1-RR | 1 |
| 484 | 67620040 | OSPH | CN | OS | -15 |
| 485 | 67620041 | OSPH | CN | OS | -28 |
| 486 | 67635003 | OSPH | R-1-5 | OS | -4 |
| 487 | 67635005 | OSPH | R-1-5 | OS | -1 |
| 488 | 67635007 | OSPH | R-1-5 | OS | -2 |
| 489 | 67635009 | OSPH | R-1-2 | OS | -1 |
| 490 | 67635010 | OSPH | R-1-5 | OS | -1 |
| 491 | 65421002 | PQP | R-1-8 | PQP | 318 |
| 492 | 65421002 | PQP | WATER | PQP | 0 |
| 493 | 65419005 | LH | R-1-5 | R-1-RR | -1 |
| 494 | 65420011 | OSPH | A | OS | 0 |
| 495 | 65420011 | RN | A | R-1-8 | 4 |
| 496 | 67637023 | OSPH | R-1-5 | OS | -1 |
| 497 | 67637022 | OSPH | R-1-5 | OS | -1 |
| 498 | 65904055 | NCC | R-1-5 | CP | 660 |
| 499 | 65904054 | NCC | A | CP | 13 |
| 500 | 66021025 | OSPH | A | OS | 0 |
| 501 | 66022063 | OSPH | A | OS | 0 |
| 502 | 66022062 | OSPH | A | OS | 0 |
| 503 | 65932101 | OSPH | CO | OS | 1 |
| 504 | 65913014 | OSPH | R-1-8 | OS | -4 |
| 505 | 64926025 | OSPH | R-1-8 | OS | -1 |
| 506 | 66034049 | RN | A | R-1-8 | 1 |
| 507 | 65215043 | LH | R-1-5 | R-1-RR | -8 |
| 508 | 64903005 | PQP | R-1-8 | PQP | 3311 |
| 509 | 67605011 | RN | A | R-1-8 | 1 |
| 510 | 65219068 | RN | A | R-1-8 | 1 |
| 511 | 65234024 | OH | R-1-5 | OS | -1 |
| 512 | 65201008 | LH | A | R-1-RR | 1 |
| 513 | 64901061 | PQP | R-1-8 | PQP | 188 |
| 514 | 67635011 | OSPH | R-1-5 | OS | -1 |
| 515 | 67635012 | OSPH | R-1-5 | OS | -1 |
| 516 | 65201007 | LH | A | R-1-RR | 1 |
| 517 | 66021022 | PQP | R-1-5 | PQP | 384 |
| 518 | 66021022 | NCC | R-1-5 | CP | 1605 |

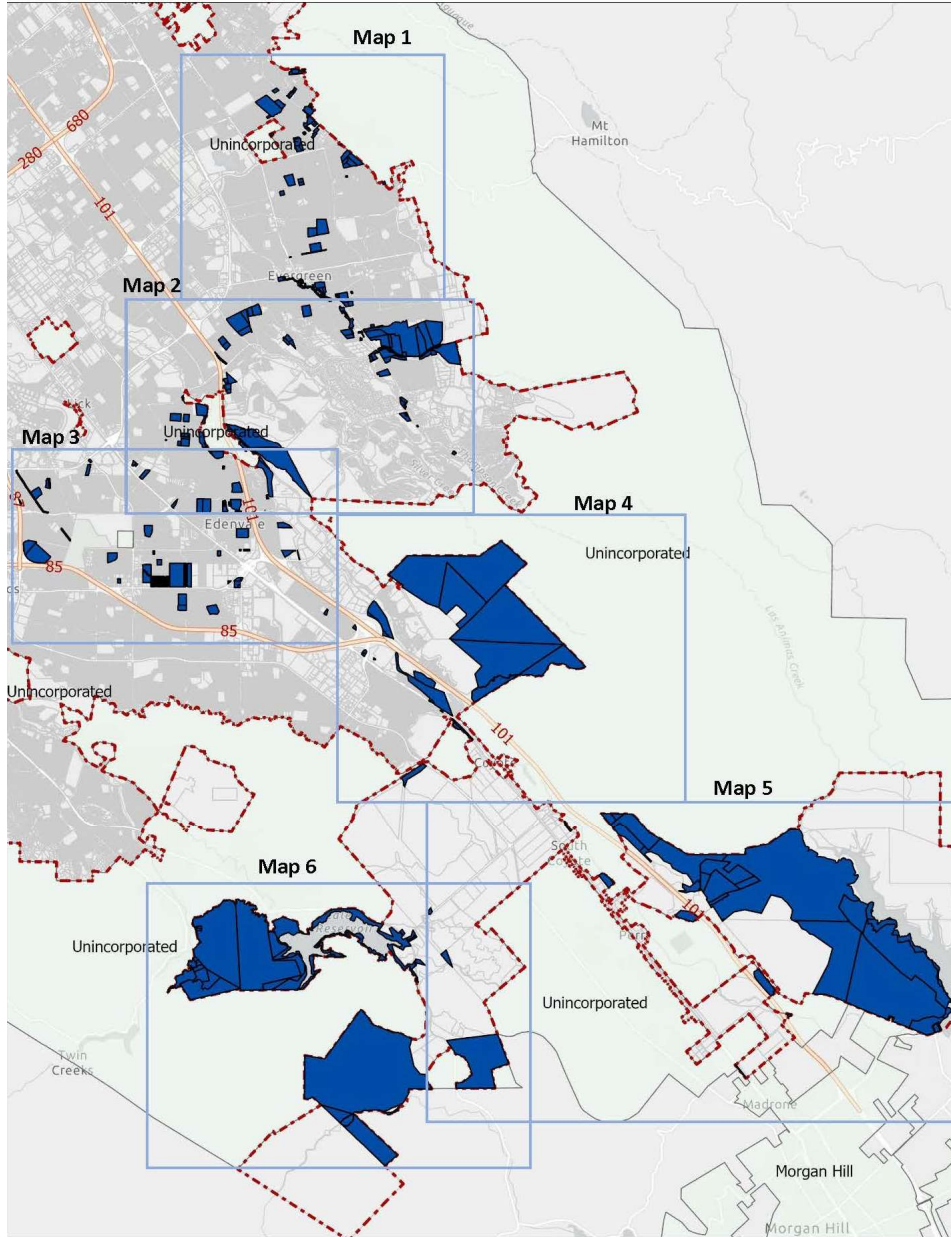
| | | | | | |
|-----|----------|------|-------|-------|-----|
| 519 | 66022134 | PQP | R-1-5 | PQP | 1 |
| 520 | 66022134 | OSPH | A | OS | 0 |
| 521 | 66022134 | OSPH | R-1-5 | OS | -1 |
| 522 | 65904??? | NCC | A | CP | 49 |
| 523 | 67633028 | OSPH | R-1-5 | OS | -1 |
| 524 | 67633017 | OSPH | R-1-5 | OS | -1 |
| 525 | 67633018 | OSPH | R-1-5 | OS | -1 |
| 526 | 67633019 | OSPH | R-1-5 | OS | -1 |
| 527 | 67634002 | OSPH | A | OS | 0 |
| 528 | 67634002 | RN | A | R-1-8 | 1 |
| 529 | 67681024 | OSPH | A | OS | 0 |
| 530 | 67681002 | OSPH | A | OS | 0 |
| 531 | 67681004 | OSPH | A | OS | 0 |
| 532 | 66020009 | OH | A | OS | 0 |
| 533 | 66015003 | OSPH | R-1-5 | OS | -16 |
| 534 | 68002004 | PQP | A | PQP | 128 |
| 535 | 68002004 | OSPH | A | OS | 0 |
| 536 | 67681029 | OSPH | A | OS | 0 |
| 537 | 67681029 | RN | A | R-1-8 | 1 |
| 538 | 66015001 | OSPH | A | OS | 0 |
| 539 | 66015002 | OSPH | A | OS | 0 |
| 540 | 66021018 | OSPH | R-1-1 | OS | -3 |
| 541 | 66021017 | OSPH | R-1-5 | OS | -3 |
| 542 | 67604016 | OSPH | A | OS | 0 |
| 543 | 67604047 | OSPH | A | OS | 0 |
| 544 | 67604052 | OSPH | A | OS | 0 |
| 545 | 67656056 | OSPH | A | OS | 0 |
| 546 | 67656056 | RN | A | R-1-8 | 1 |
| 547 | 66037018 | OSPH | A | OS | 0 |
| 548 | 68002003 | PQP | A | PQP | 34 |
| 549 | 68002005 | OSPH | A | OS | 0 |
| 550 | 68002006 | OSPH | A | OS | 0 |
| 551 | 66020001 | OSPH | R-1-1 | OS | -5 |
| 552 | 66019010 | OH | A | OS | 0 |
| 553 | 67620045 | OSPH | R-1-8 | OS | -1 |
| 554 | 64909015 | PROS | R-1-8 | OS | -2 |

EXHIBIT "B"

EXISTING GENERAL PLAN DESIGNATION AND EXISTING AND PROPOSED ZONING DISTRICT MAPS

File Nos. C22-126, C22-127, C22-128, C22-129, C22-130, C22-131, C22-132, C22-133, C22-134, C22-135 and C23-096: The Zoning District Map is hereby amended as follows:

Key Map



B-1

T-52000 / 2048387_5
Council Agenda: 10.1(d)
Item No.: 10/17/2023

DRAFT – Contact the Office of the City Clerk at (408) 535-1260 or CityClerk@sanjoseca.gov for final document.

