

May 25th, 2018

LBG

TO:

Lonnie B. Gross ME Ed rt

San Jose City Council &
Planning Department Director

R.E. Alviso National Historic District policies on new construction &
Alviso Master Plan Guidelines

As a member of the Alviso Master Plan, I only speak for myself but for former members and presently members of the Community at large, who have a great concern over new construction, and not having any input over the footprint of National Historical events, persons, and structures, homes etc. who are being destroyed by poor planning, and by not respecting those that have preserved private properties, with little and no protection, is disgraceful, illegal, and shows no pride in the past history of a National Historic Town of Alviso.

See Alviso Master Plan - pp.7-11 Office of Councilman Lan Diep Ddistrict Four.

See attached photos & National Historic Map:

A. Location- Catherine & Eldorado - Historic District in Alviso. Previous Owners, the La Montagne family, and boarding house employees of P.G.E. A family of four reside n0w.

B. Bldg. Being constructed- A 2 story building April 18,1918. No set backs and no landscaping spaces.

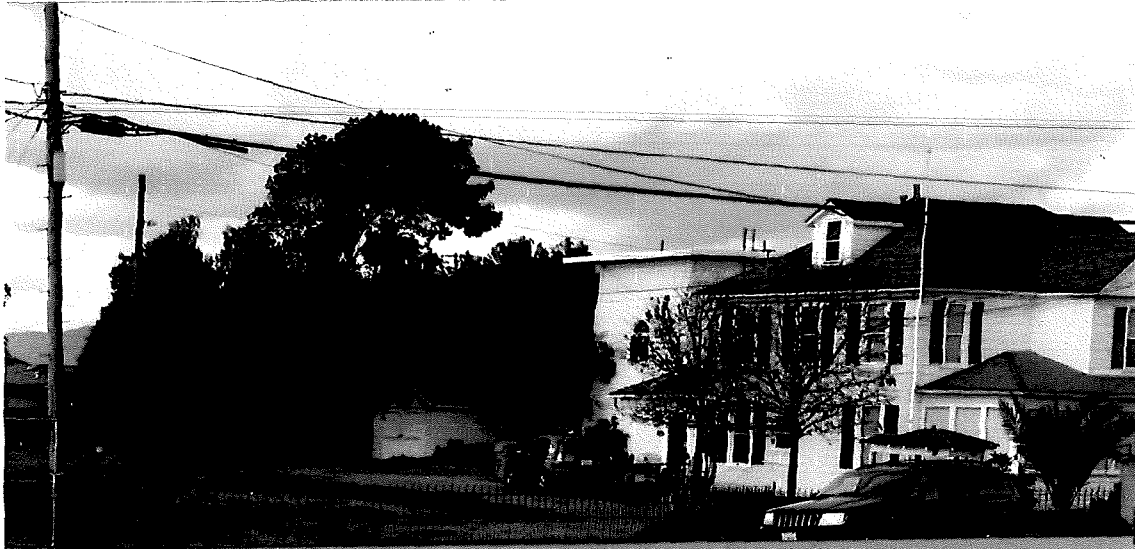
Respectfully *l b g*

Lonnie Gross

The UNION WREHOUSE ca 1850
the Mudflat Refuge
Alviso National Historic District

Alviso, Ca 95002.0055

Lonnie B. Gross
Home Economist
Educator & Counselor [ret]



A



B

Offices in the Union Warehouse 1850 ca
Alviso National Historic District

Alviso, CA 95002.000

Discover Alviso - "NATIONAL REGISTER of HISTORIC PLACES"

Robert W. Gross Ph.D.

San Francisco Bay
& Guadalupe River

Don Edwards San Francisco Bay
National Wildlife Refuge

1. Bay Side Cannery
2. China Camp
3. Bay Side Cannery Office
4. Union Warehouse
5. Three Musketeers Hotel
6. Laine - Tilden Grocery Store
7. Tilden Residence-Laine
8. Southern Pacific Depot
9. La Montagne Residence

10. John O'Martin Residence
11. Robert Trevey Residence
12. South Bay Yacht Club
13. Trevey & Co. - Chinese Casino
14. Alviso City Hall & Fire Station
15. Wade Residence
16. Wade Warehouse
17. Alviso Grammar School *
18. W. Roubidous - Blacksmith
19. Constable's Office & Jail

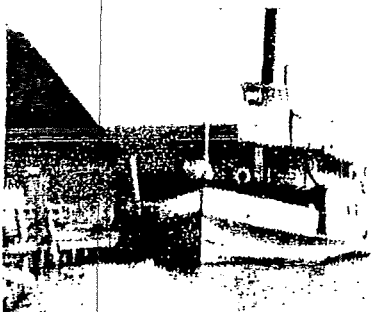
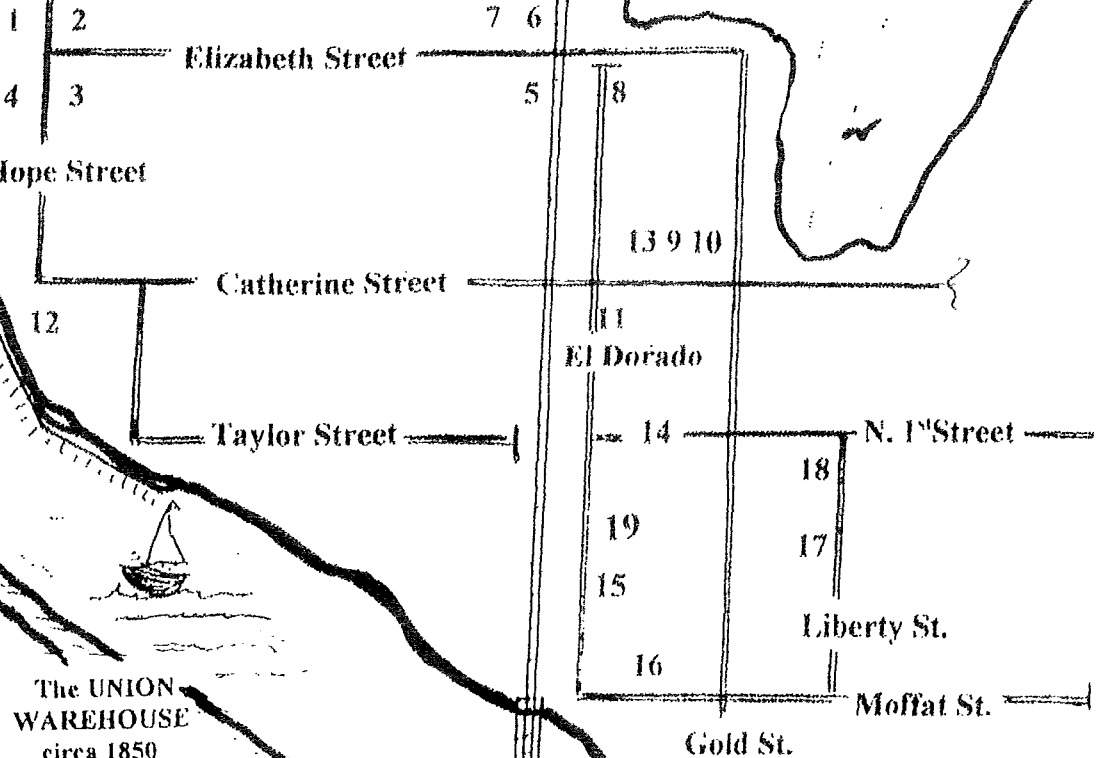
* Following the Consolidation between Alviso, and San Jose in 1968, City officials demolished this historic building without any communication to the residences, which was a real tragedy.

Santa Clara County
Marina & Park

Wetlands

PORT OF
ALVISO

S.P.R.R.



The UNION
WAREHOUSE
circa 1850
& loading docks

ALVISO has always had a personality of its own - welcome to this historic community. Please help preserve these historic values, give respect to the private properties, and to their owners. The Western Grid is known as the "Alviso National Historic District," and many of these buildings in mid 1990's were also identified by the San Jose Historic Landmarks Commission as historic sites. Robert W. Gross Ph.D. Mudflat Refuge

1. Yen Chen, and his son Thomas Foon Chew, founder of the **Bay Side Cannery in 1870 ca**, and was known as one of California's largest canneries, and a school for workers children. Following the closing of the cannery, the subject property was used as a major private boat construction yard for many years. The US Department of Interior purchased the site in late 1980's, and the goal was to make this facility a gateway into the refuge hosting a museum: a gift shop, environmental class rooms, a visitor contact station for the Don Edwards San Francisco Bay National Wildlife Refuge. Due to financial constraints etc., the historic structure was never given the attention it deserved. Today, it stands in serious need of restoration to preserve its contributions to Santa Clara Valley.
2. **China Camp 1895 ca** was part of the Bay Side Cannery, and the only remaining historic building left on the property. This building was used as a cooking/mess hall, a bunk house for hundreds of employed workers at the cannery. However, time and vandalism destroyed the many cabins and homes which existed during that period. When the cannery closed, the building had a colorful life, by becoming a gambling hall, and a place to be entertained by the ladies at night. Lonnie and Bob Gross purchased it in the late 1960's. Due to many years of neglect, the building was restored as seen today. Since the purchase by Gross, the building has been used as a marine store, loft and art gallery, antique shop, residential, a restaurant, art graphics company, a research firm in real estate, and professional environmental offices.
3. The **Bay Side Cannery Offices 1900 ca** following the death of Thomas Foon and the closure of the cannery, Oil Terminals of San Francisco purchased the building for their offices, and directed the flow of oil from barges into storage tanks on site, and distributed by trucks in the Santa Clara Valley. In early, 1970's, the building was purchase by Deon and Eldon Gresham, at that time, they made the decision to restore the building as seen today, now used for their personal use and offices.
4. **John Jacob Orley Union Warehouse 1850 ca** this large brick building was one of the first cannery buildings in Santa Clara County, it was used for the storage of fruits, vegetables were packed in ice, and then were shipped by schooners to San Francisco. This warehouse also hosted the Alviso Port/Docks, and became the transportation hub for passengers into an out of Alviso, and Santa Clara Valley. In the early 1970's, the property was purchased by Lonnie and Bob Gross, the building was in total ruins due to neglect, vandalism, and time, they made the decision to restore the structure as seen today, and it is used by Gross for private gatherings, a personal museum, and their offices.
5. **J.J. Pipes Alviso Hotel 1885 ca** was a very colorful place, from ranchers, cowboys, rail road employees, duck hunters, business men, and a wild bar with dancing ladies to entertain men that came thru the door.
6. **Tilden/Laine Grocery Store 1870 ca** this historic building was one of the first grocery stores in Alviso, however, rumors claimed that it was also used as a hall for gambling, and lady entertainment at night.

7. **Tilden/Laine residence 1887 ca** - this ornate Victorian stands out as classic architecture of the time of a prominent Alviso female merchant, her son Willis married Yolanda, and he was the Alviso City Clerk, and he founded the Laines Bait. Today, it is the residence of Beverly & Tom Laine [grandson] and former Mayor of Alviso.

8. **Southern Pacific Railroad Depot 1900 ca** the railroad became competition for the docks, due to economics, and speed of shipments, forced the Alviso Port, to eventually loose its role as a transportation center.

9. **La Montague residence 1890 ca** following their occupancy, P.G.E. remodeled the home, and used it as a boarding house for their employees, today, it makes a statement of the time, and now is a private residence.

10. **John O'Martin residence 1886 ca** he was from Scotland, and was the first foreigner to settle in Alavio as a business man.

11. **Robert Trevey residence 1886 ca** he was a Alviso merchant from 1897 to 1940.

12. **South Bay Yacht Club 1915 ca** many noted persons were members of the club when it was founded, today it is very active, and a social meeting place in Alviso, and it is known by boaters in the San Francisco Bay for its hospitality.

13. **Trevey & Company 1880 ca** this store was also used as a Chinese Casino, it became active during the depression, because Alviso was known for its lack of law, and order.

14. **Alviso City Hall & Fire Station 1920 ca** after the Consolidation in 1968 with the San Jose, it was a library, recently restored as a San Jose Police Department Sub-station serving the community in that capacity.

15. **Wade residence 1851 ca** little is known about this home [modular], other than it was brought from New England by a sailing ship, and later assembled in Alviso.

16. **Wade Warehouse 1851 ca** - the large brick openings made it easy for a Wells Fargo stage coach to enter for repairs, as well, the storage of goods.

17. **Alviso Grammer School 1900 ca** A.P. Giannini the founder of Bank of Italy, now it is the Bank of America, when the school closed, it became part of Alviso City Hall, and the City Council Chambers. What is real tragedy in the history of Alviso, following the Consolidation in 1968, the San Jose City officials physically leveled this building, claiming "it was not structurally safe," rumor has it, they wanted it known, "Alviso no longer had the power of local government," and all that remains is the one room school house, and two large palm trees marking the original location.

18. **W. Roubidous - Alviso Blacksmith 1900 ca** little is known about him.

19. **Constable's Office, Jail, and Court room 1900 ca** Alviso had two female judges; Marie Bacigalupi, and Alice Huxham during that period, including the first female Alviso Mayor Amila Vahl.

Robert W., Gross Ph.D.

*Printing courtesy of the Mudflat refuge
Alviso National Historic District*



Alviso School, circa 1890's



South Bay Yacht Club, circa 1915



China Camp circa 1895