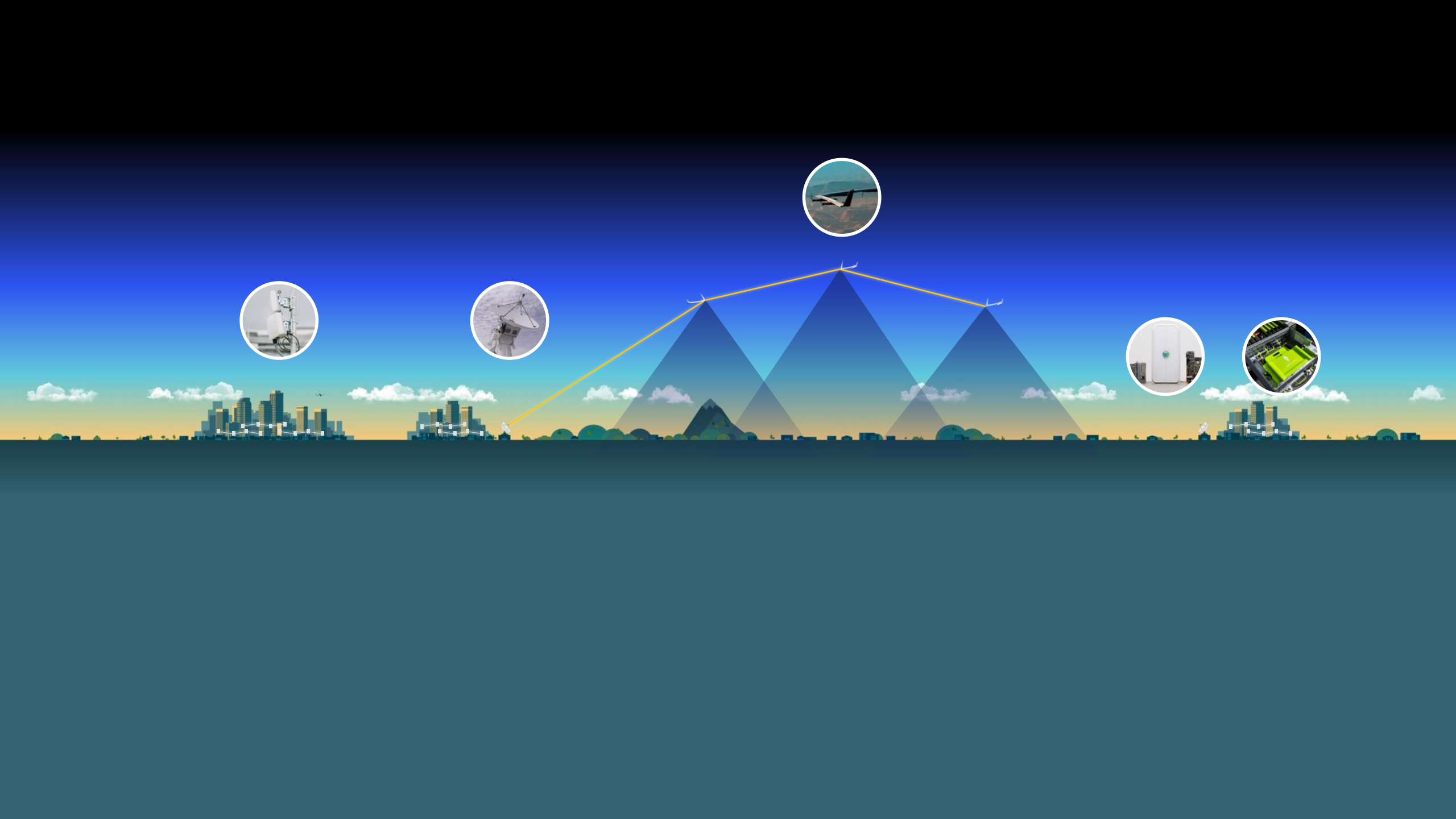


Terragraph Update

Yael Maguire

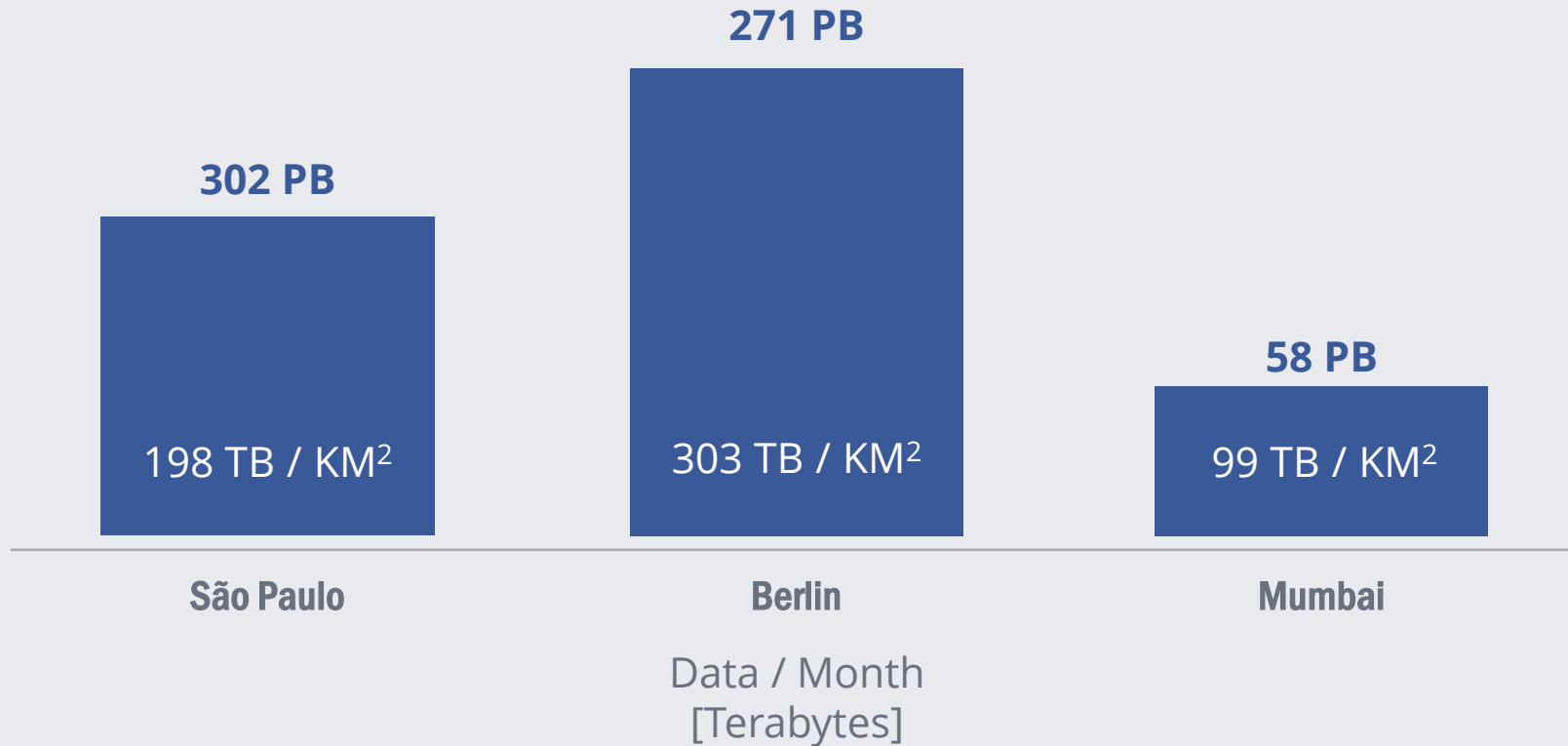
VP, Connectivity





The Urban Density Challenge

2021 Data Consumption Forecast



The Gigabit Broadband Challenge

Optical Fiber Networks to the Edge

COST

LONGER TO DEPLOY

INFLEXIBLE

PERMITS

DAMAGED FIBER

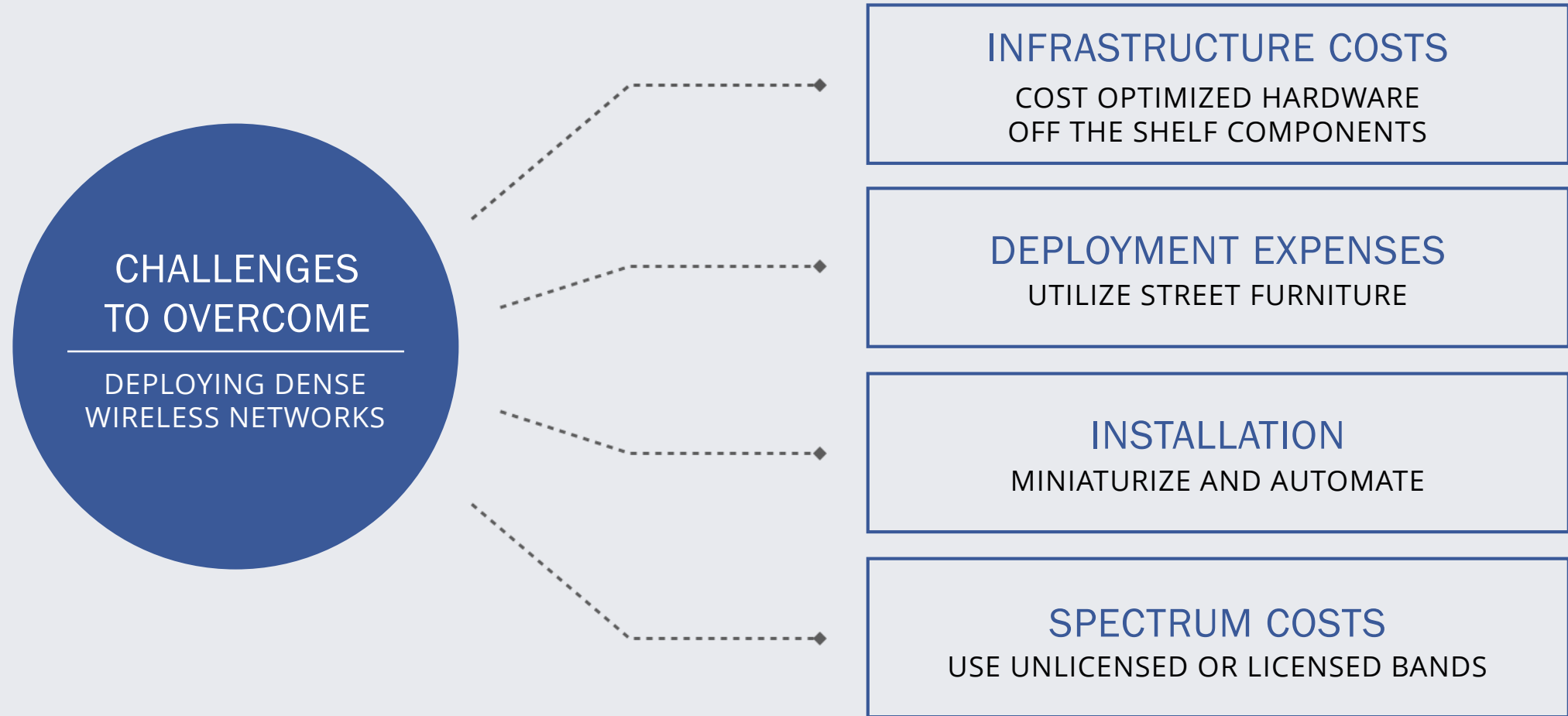
mmWave Wireless Networks

AFFORDABLE

TIME TO MARKET ADVANTAGE

EASY TO DEPLOY AND MAINTAIN

The Path Forward for mmWave





Terragraph

Designed to deliver gigabit speeds to dense urban areas at a fraction of the cost of fiber



Project Status

Downtown Area Deployment

- Planned Deployment Complete
- Terragraph Engineering Validation Testing Complete
- City of San Jose end-user Wi-Fi testing underway

Next Steps

- Continuing Terragraph network testing and evaluating Wi-Fi experience
- Support the City of San Jose's efforts to develop a Public Wi-Fi Strategy





facebook