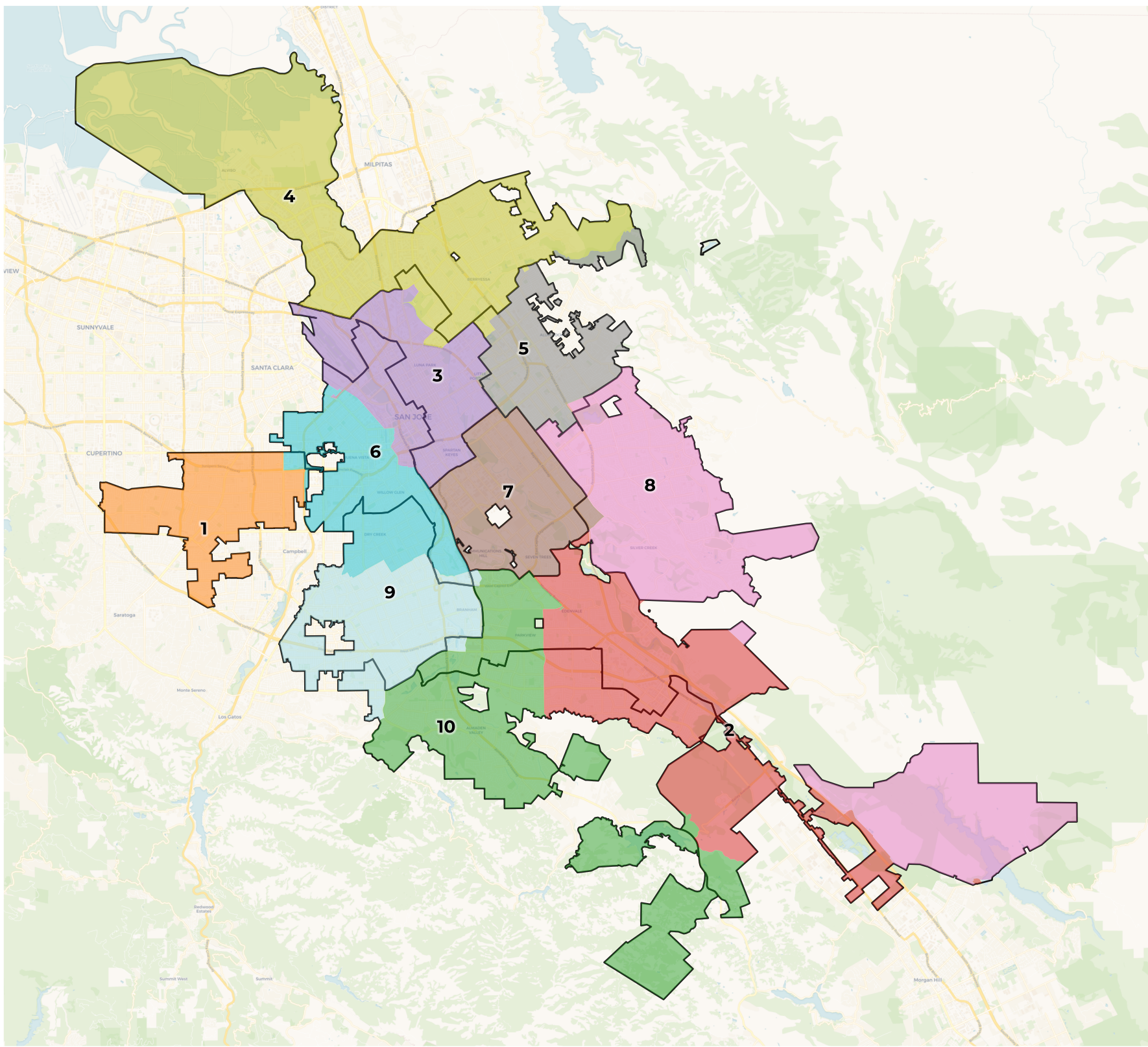


REDISTRICTING PARTNERS

City of San Jose
Unity Map with overlay

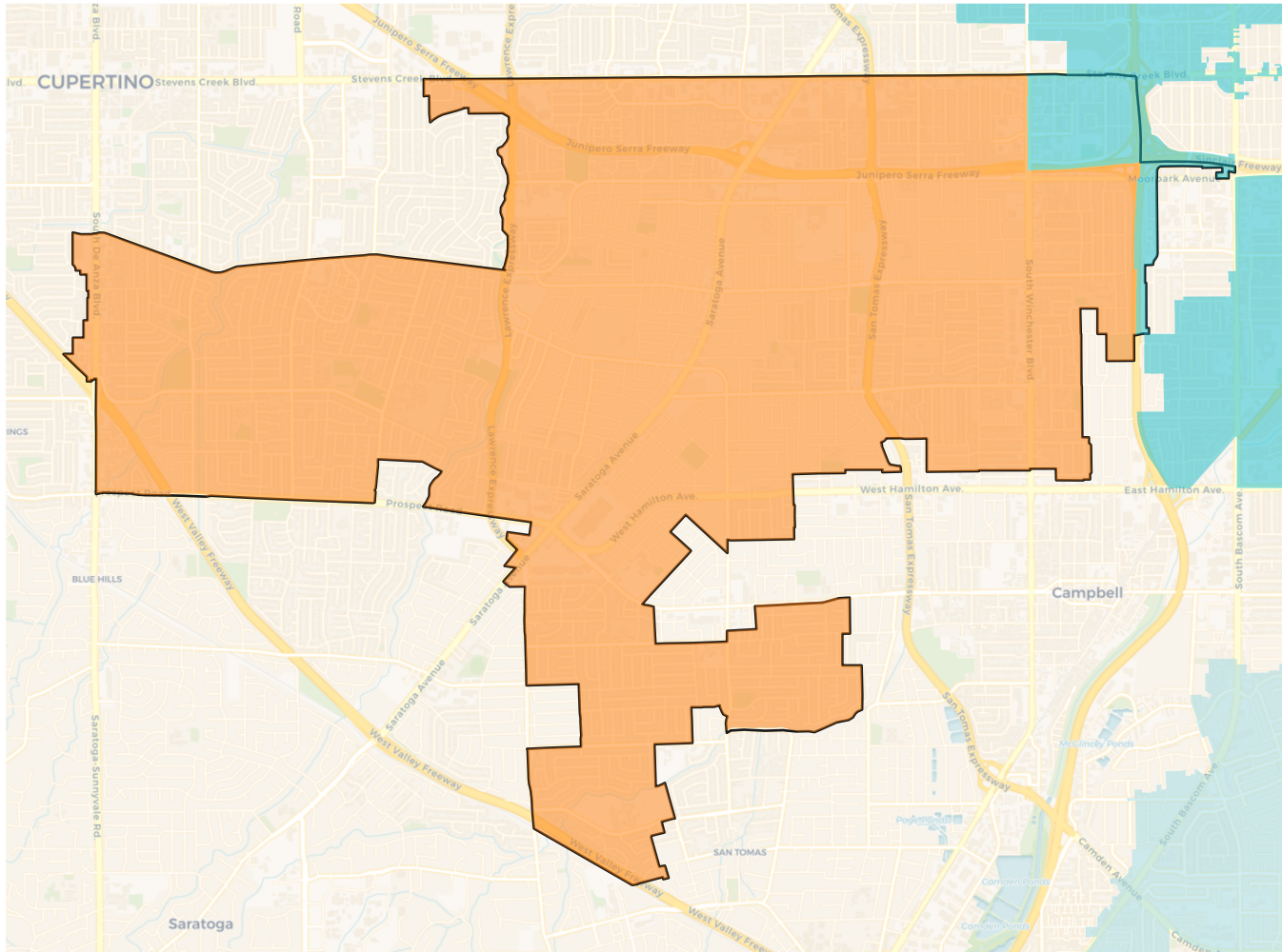
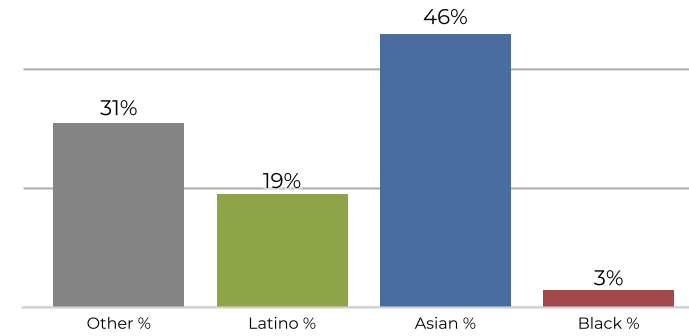
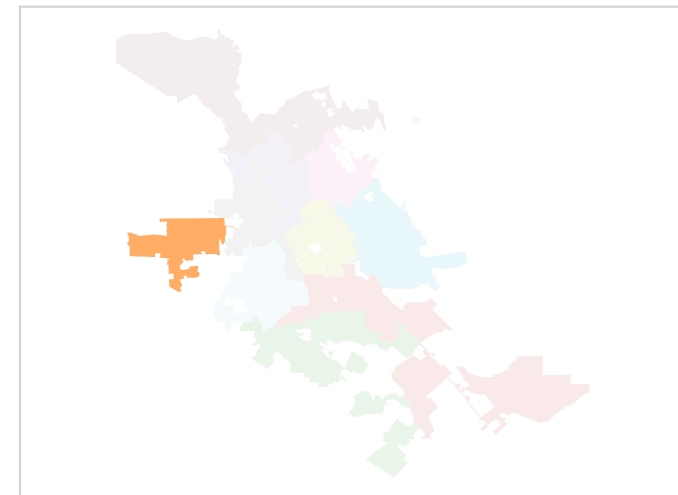
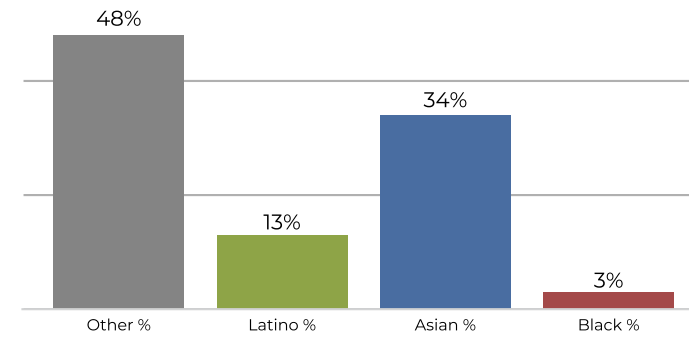


2020 Census

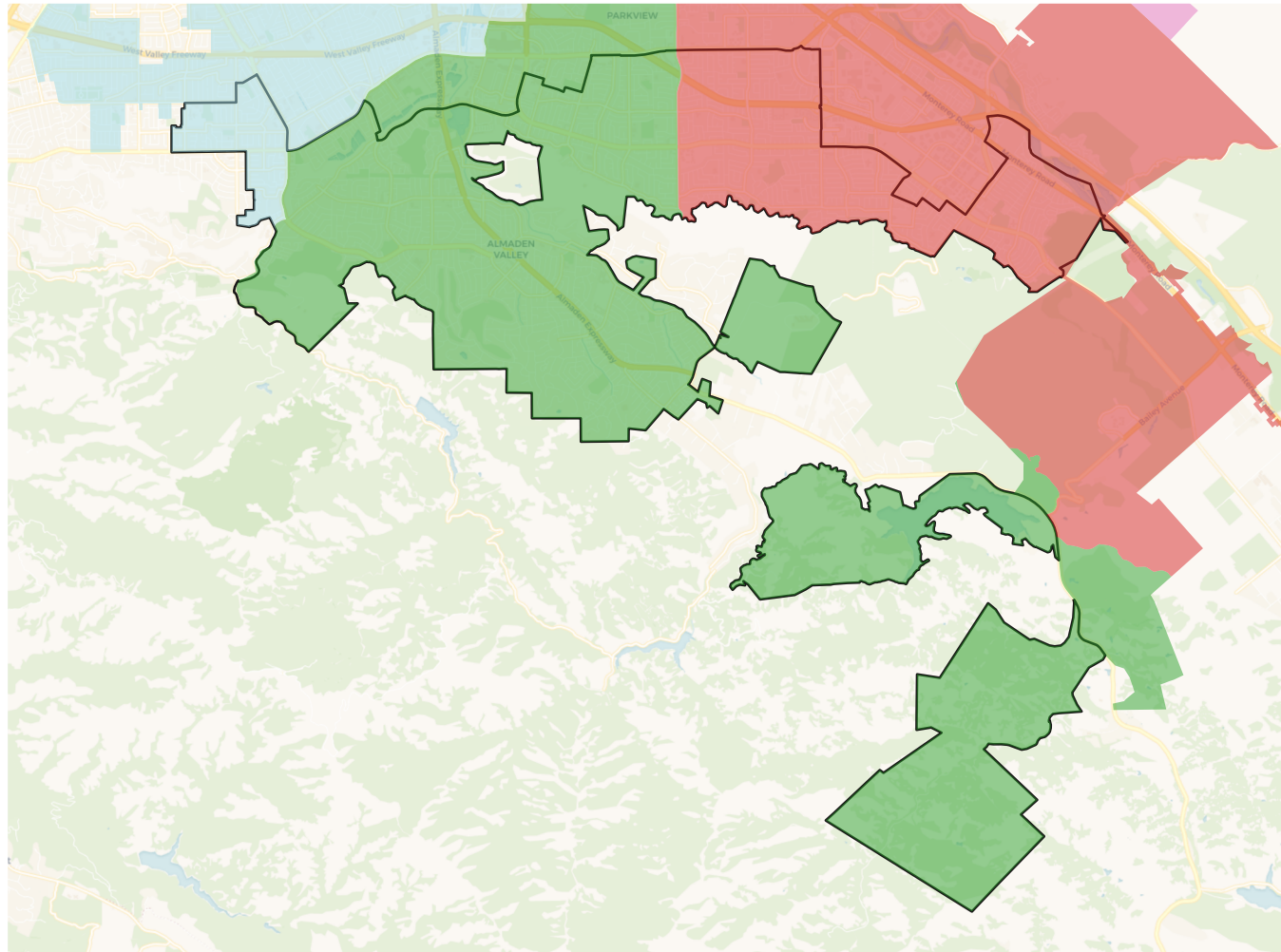
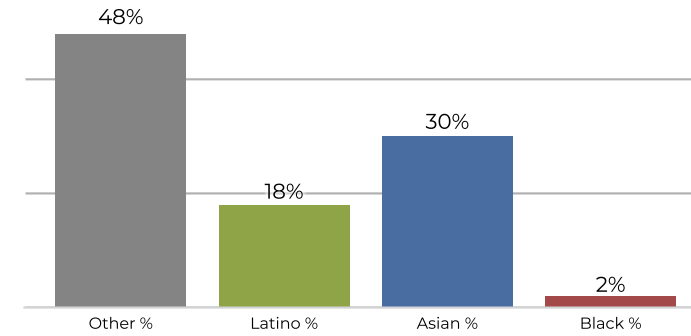
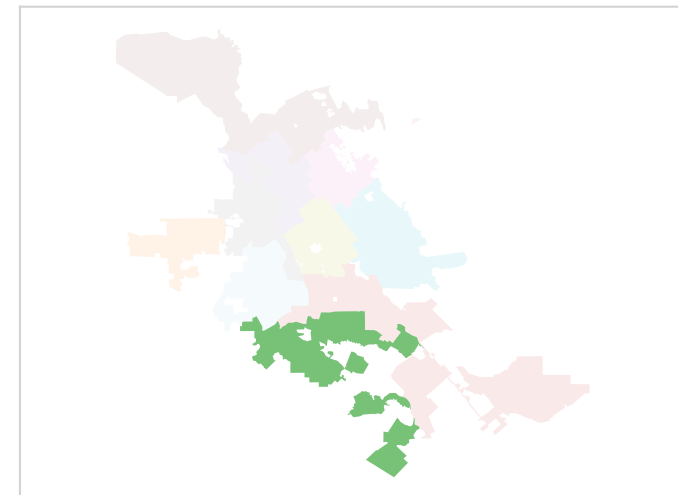
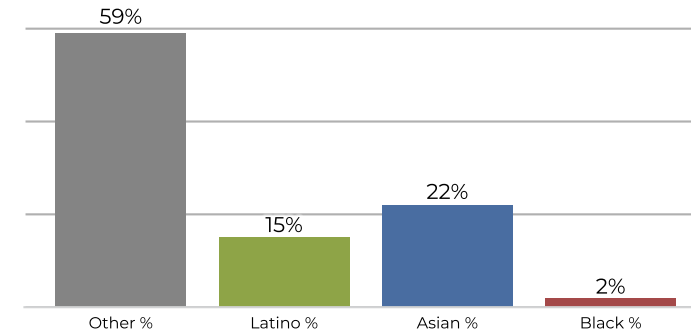
	1	10	2	3	4	5	6	7	8	9
Population	102,128	102,237	101,450	97,737	105,331	98,752	102,737	98,070	101,650	103,040
Deviation	815	924	137	-3,576	4,018	-2,561	1,424	-3,243	337	1,727
Deviation %	0.8%	0.9%	0.1%	-3.5%	4.0%	-2.5%	1.4%	-3.2%	0.3%	1.7%
Other	32,139	50,020	26,879	20,878	18,490	8,679	41,141	9,903	15,255	59,152
Other %	31.5%	48.9%	26.5%	21.4%	17.6%	8.8%	40.0%	10.1%	15.0%	57.4%
Latino	19,746	19,088	37,146	44,612	17,139	56,652	35,205	44,418	21,975	20,230
Latino %	19.3%	18.7%	36.6%	45.6%	16.3%	57.4%	34.3%	45.3%	21.6%	19.6%
Asian	47,174	31,081	33,574	29,143	67,593	31,681	21,521	41,337	62,315	21,549
Asian %	46.2%	30.4%	33.1%	29.8%	64.2%	32.1%	20.9%	42.2%	61.3%	20.9%
Black	3,069	2,048	3,851	3,104	2,109	1,740	4,870	2,412	2,105	2,109
Black %	3.0%	2.0%	3.8%	3.2%	2.0%	1.8%	4.7%	2.5%	2.1%	2.0%

Citizen Voting Age Population (CVAP)

	1	10	2	3	4	5	6	7	8	9
Total CVAP	58,875	70,612	62,386	56,188	60,853	58,204	66,342	56,118	70,532	69,402
Other CVAP	28,652	41,673	22,603	16,906	14,656	7,929	35,372	8,353	14,366	47,880
Other CVAP %	48.7%	59.0%	36.2%	30.1%	24.1%	13.6%	53.3%	14.9%	20.4%	69.0%
Latino CVAP	8,024	11,103	18,108	20,179	10,061	27,870	16,891	19,774	15,189	10,266
Latino CVAP %	13.6%	15.7%	29.0%	35.9%	16.5%	47.9%	25.5%	35.2%	21.5%	14.8%
Asian CVAP	20,154	16,045	18,754	16,667	34,346	20,887	10,278	26,671	38,805	9,804
Asian CVAP %	34.2%	22.7%	30.1%	29.7%	56.4%	35.9%	15.5%	47.5%	55.0%	14.1%
Black CVAP	2,045	1,791	2,922	2,436	1,791	1,519	3,801	1,320	2,173	1,452
Black CVAP %	3.5%	2.5%	4.7%	4.3%	2.9%	2.6%	5.7%	2.4%	3.1%	2.1%

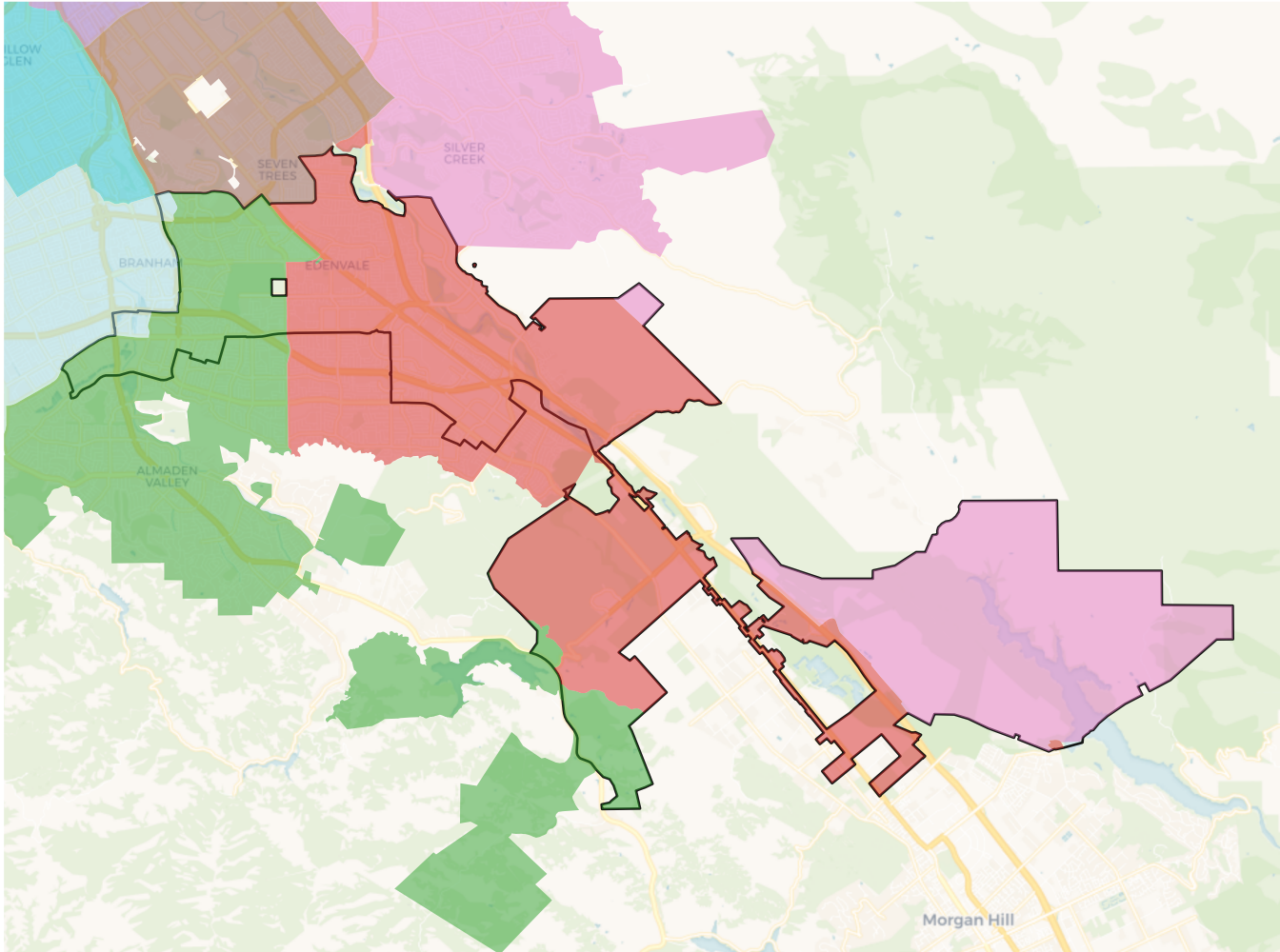
District 1

2020 Census

Citizen Voting Age Population


Population	Deviation	Deviation %	Other	Other %	Latino	Latino %	Asian	Asian %	Black	Black %
102,128	815	0.8%	32,139	31.5%	19,746	19.3%	47,174	46.2%	3,069	3.0%
Total CVAP	Other CVAP	Other CVAP %	Latino CVAP	Latino CVAP %	Asian CVAP	Asian CVAP %	Black CVAP	Black CVAP %		
58,875	28,652	48.7%	8,024	13.6%	20,154	34.2%	2,045	3.5%		

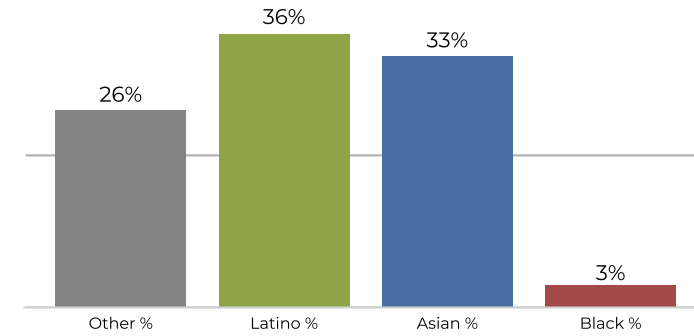
District 10

2020 Census

Citizen Voting Age Population


Population	Deviation	Deviation %	Other	Other %	Latino	Latino %	Asian	Asian %	Black	Black %
102,237	924	0.9%	50,020	48.9%	19,088	18.7%	31,081	30.4%	2,048	2.0%
Total CVAP	Other CVAP	Other CVAP %	Latino CVAP	Latino CVAP %	Asian CVAP	Asian CVAP %	Black CVAP	Black CVAP %		
70,612	41,673	59.0%	11,103	15.7%	16,045	22.7%	1,791	2.5%		

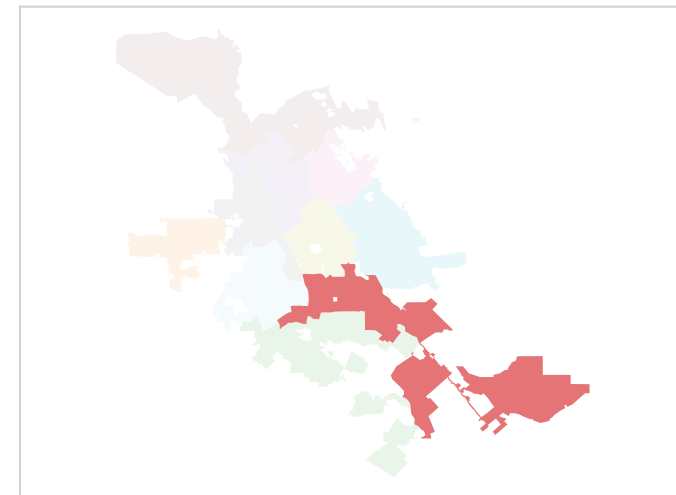
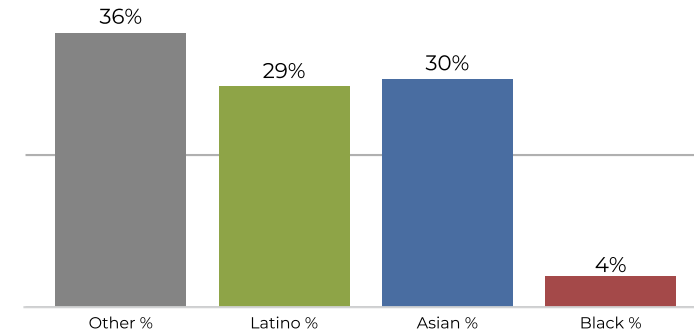
District 2



2020 Census

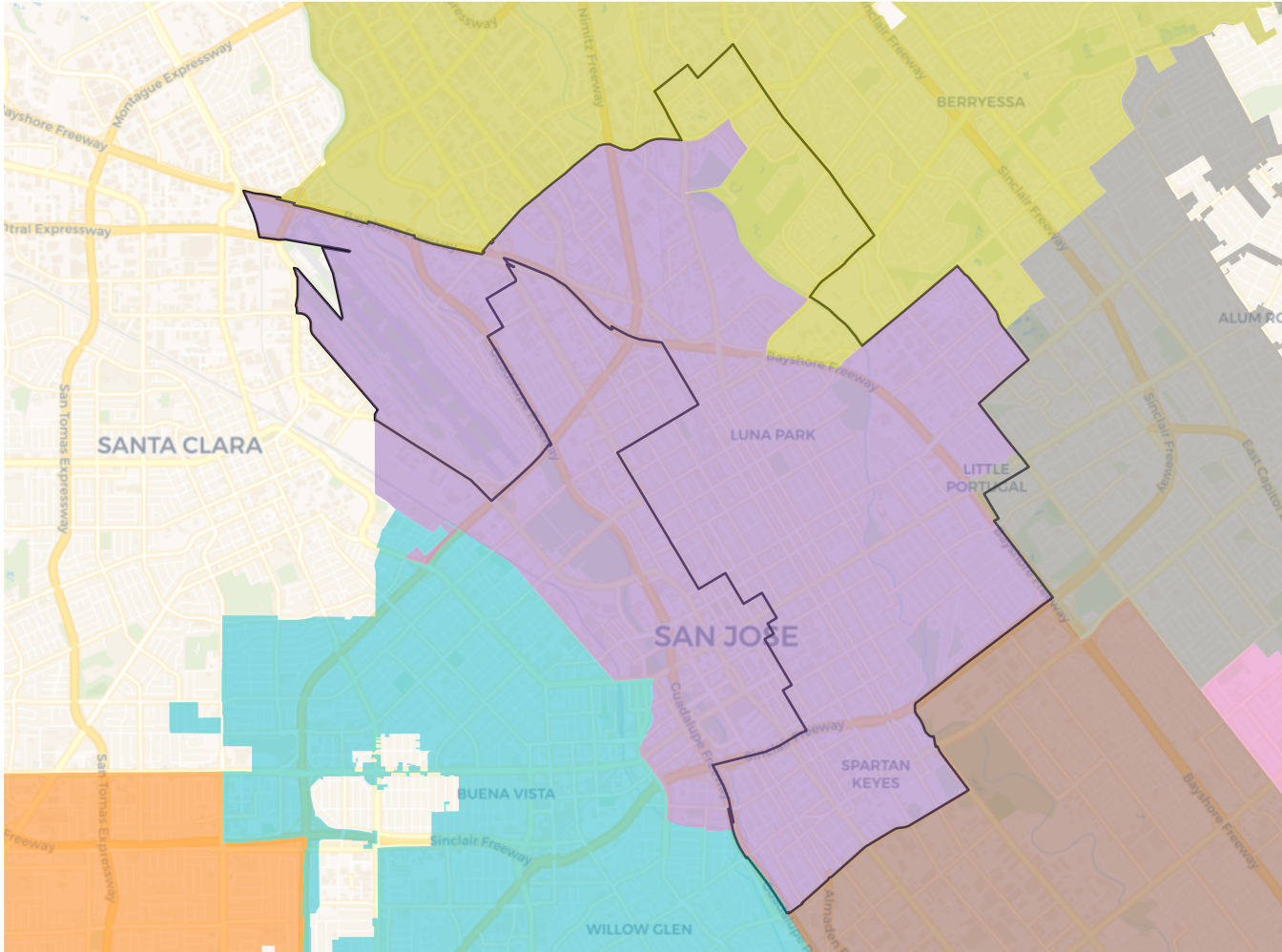


Citizen Voting Age Population

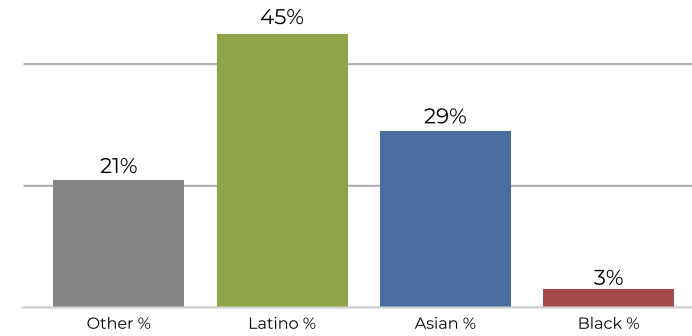


Population	Deviation	Deviation %	Other	Other %	Latino	Latino %	Asian	Asian %	Black	Black %
101,450	137	0.1%	26,879	26.5%	37,146	36.6%	33,574	33.1%	3,851	3.8%
Total CVAP	Other CVAP	Other CVAP %	Latino CVAP	Latino CVAP %	Asian CVAP	Asian CVAP %	Black CVAP	Black CVAP %		
62,386	22,603	36.2%	18,108	29.0%	18,754	30.1%	2,922	4.7%		

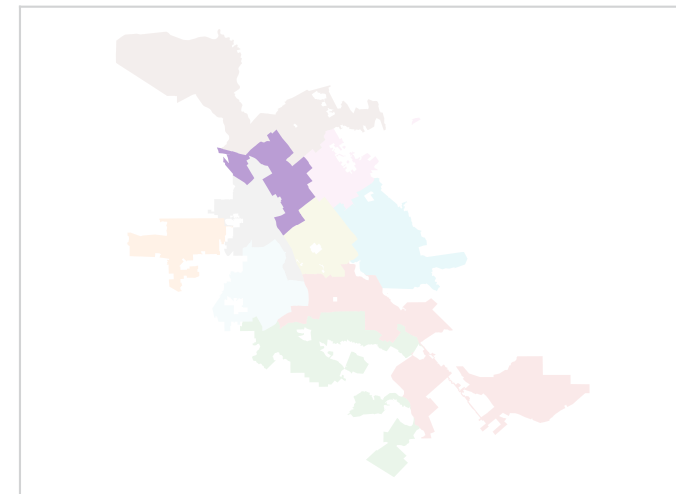
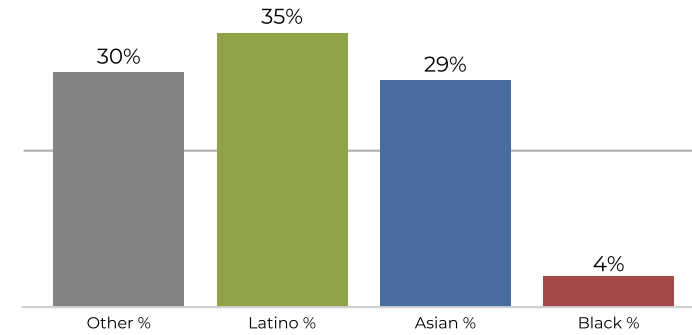
District 3



2020 Census

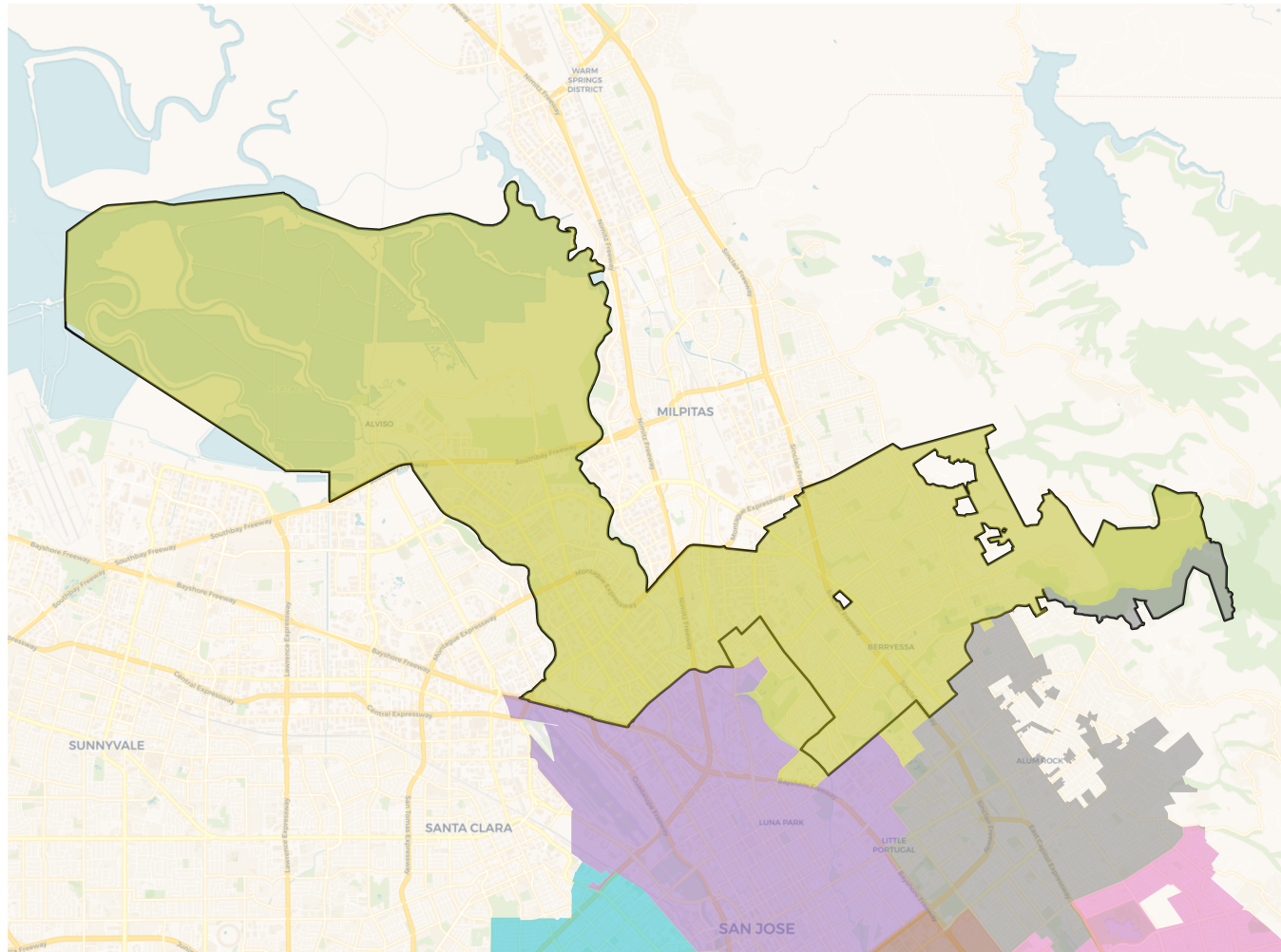


Citizen Voting Age Population

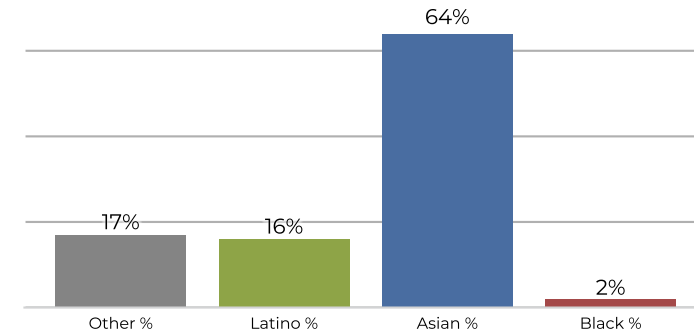


Population	Deviation	Deviation %	Other	Other %	Latino	Latino %	Asian	Asian %	Black	Black %
97,737	-3,576	-3.5%	20,878	21.4%	44,612	45.6%	29,143	29.8%	3,104	3.2%
Total CVAP	Other CVAP	Other CVAP %	Latino CVAP	Latino CVAP %	Asian CVAP	Asian CVAP %	Black CVAP	Black CVAP %		
56,188	16,906	30.1%	20,179	35.9%	16,667	29.7%	2,436	4.3%		

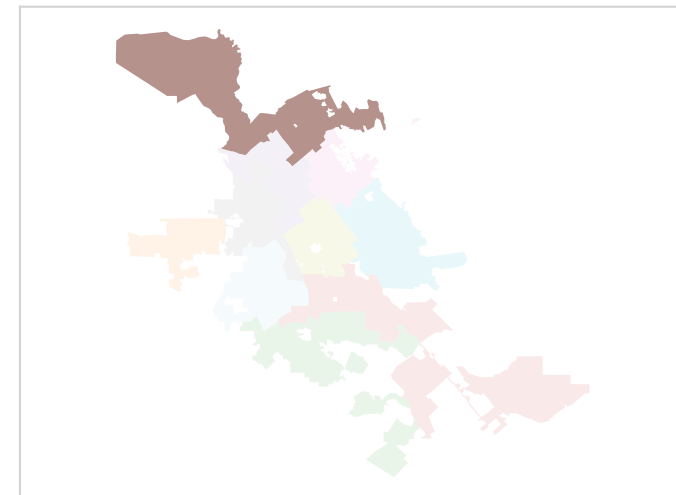
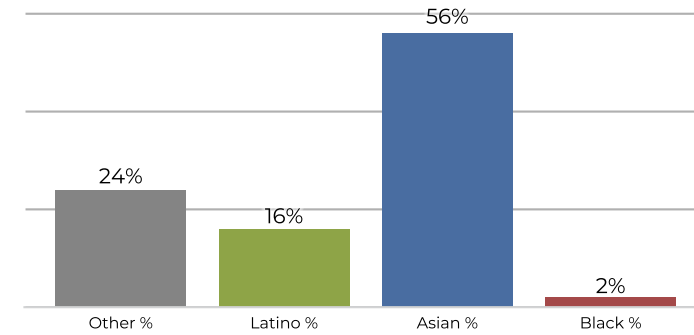
District 4



2020 Census

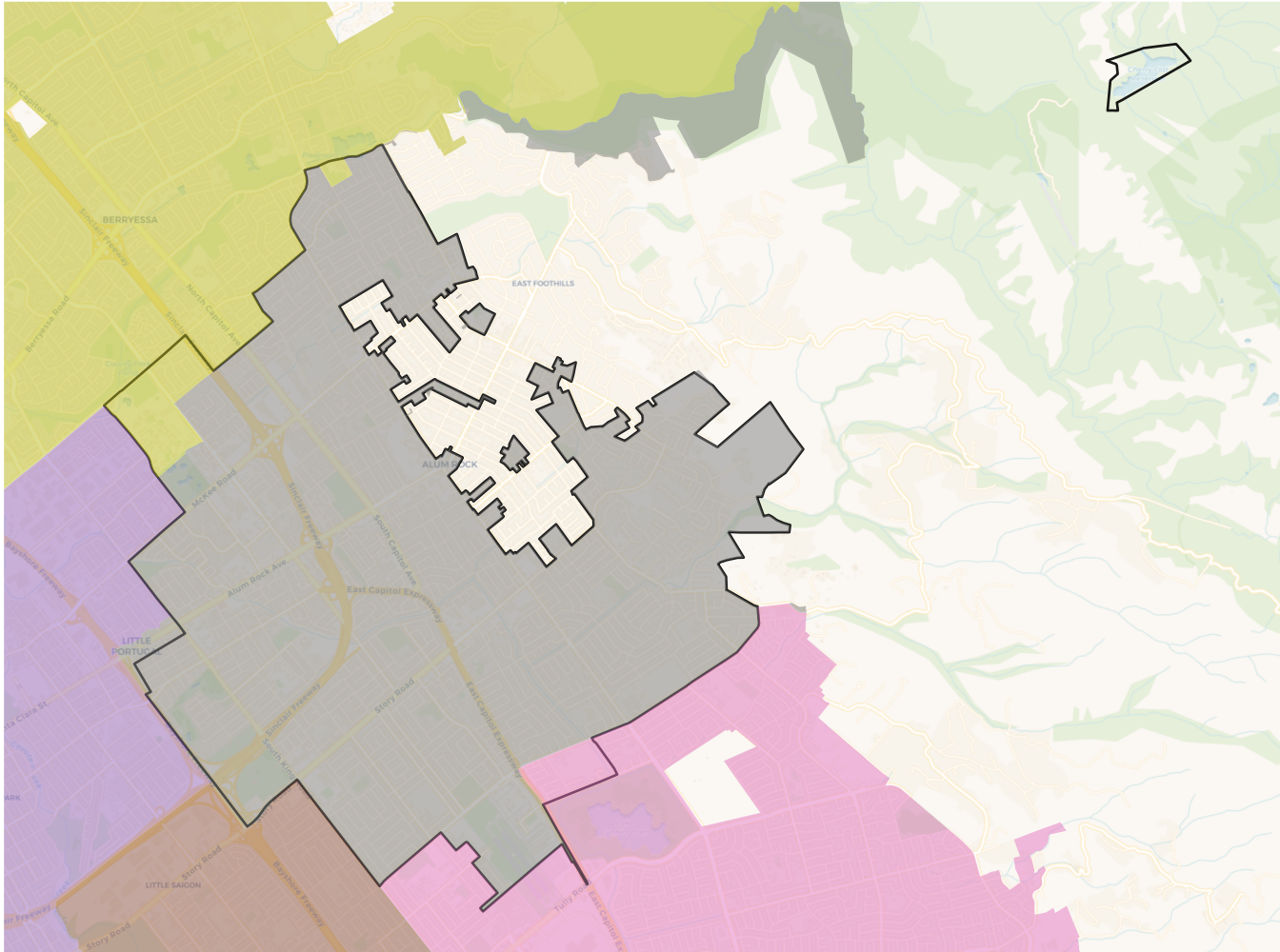


Citizen Voting Age Population

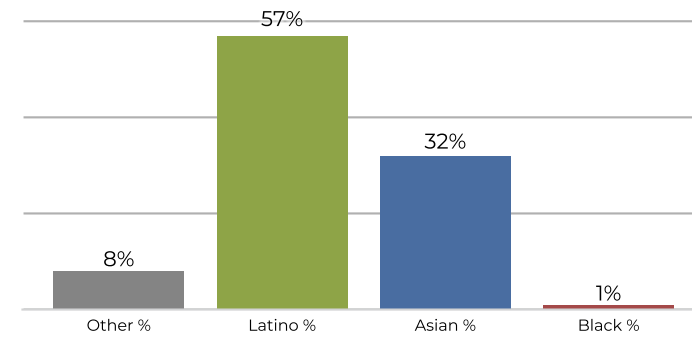


Population	Deviation	Deviation %	Other	Other %	Latino	Latino %	Asian	Asian %	Black	Black %
105,331	4,018	4.0%	18,490	17.6%	17,139	16.3%	67,593	64.2%	2,109	2.0%
Total CVAP	Other CVAP	Other CVAP %	Latino CVAP	Latino CVAP %	Asian CVAP	Asian CVAP %	Black CVAP	Black CVAP %		
60,853	14,656	24.1%	10,061	16.5%	34,346	56.4%	1,791	2.9%		

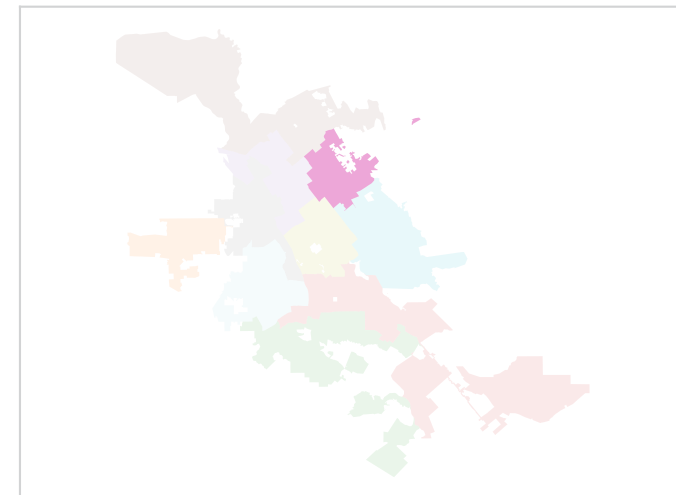
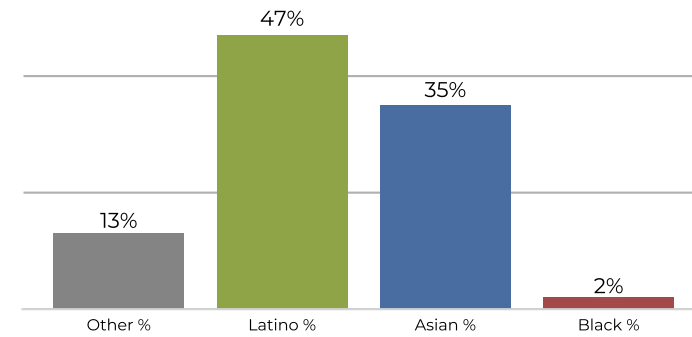
District 5



2020 Census

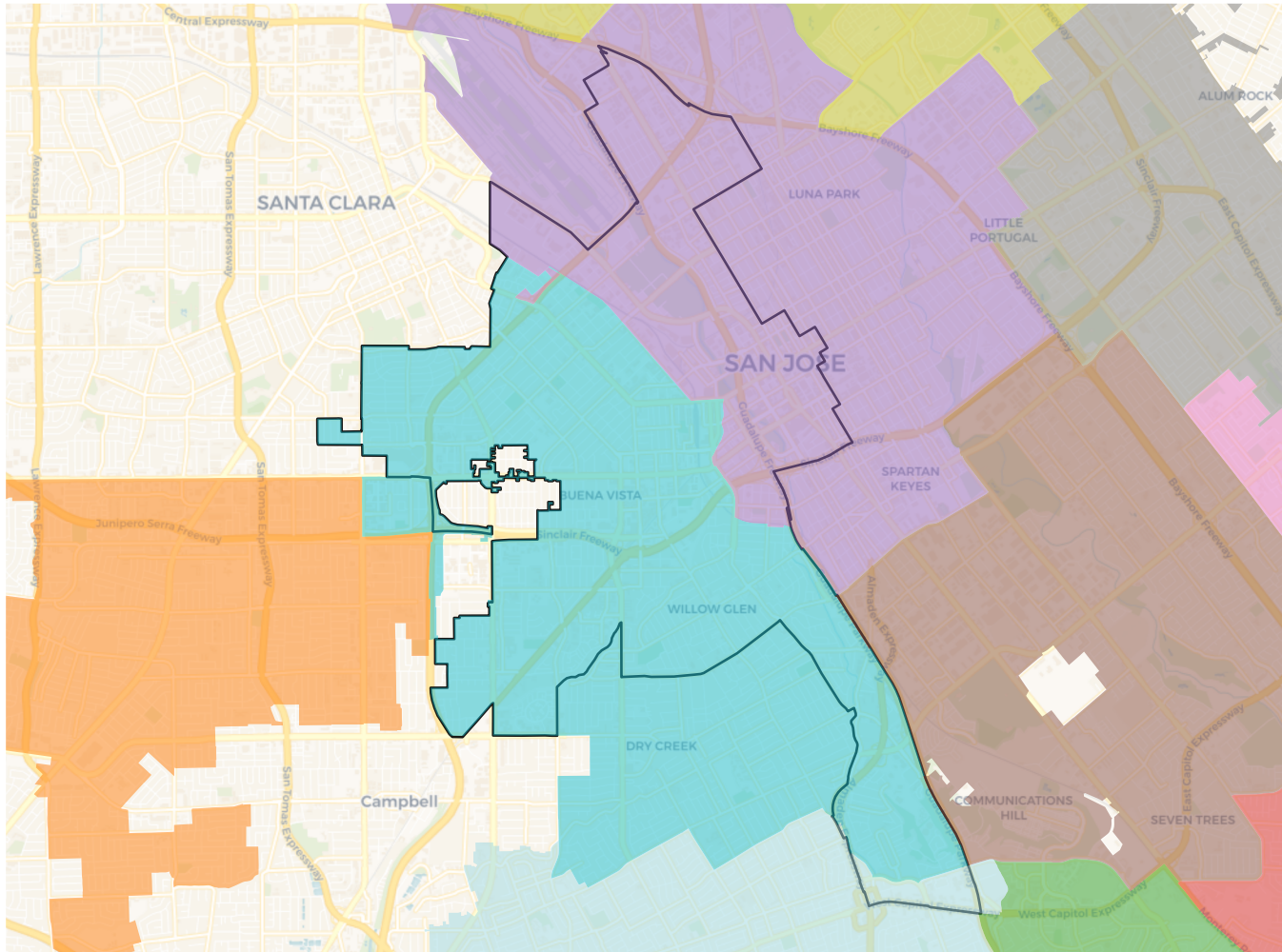


Citizen Voting Age Population

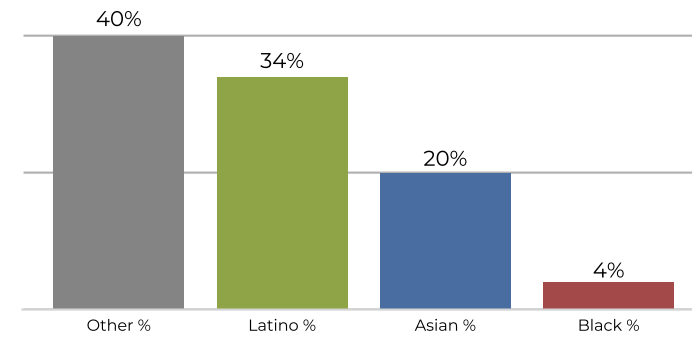


Population	Deviation	Deviation %	Other	Other %	Latino	Latino %	Asian	Asian %	Black	Black %
98,752	-2,561	-2.5%	8,679	8.8%	56,652	57.4%	31,681	32.1%	1,740	1.8%
Total CVAP	Other CVAP	Other CVAP %	Latino CVAP	Latino CVAP %	Asian CVAP	Asian CVAP %	Black CVAP	Black CVAP %		
58,204	7,929	13.6%	27,870	47.9%	20,887	35.9%	1,519	2.6%		

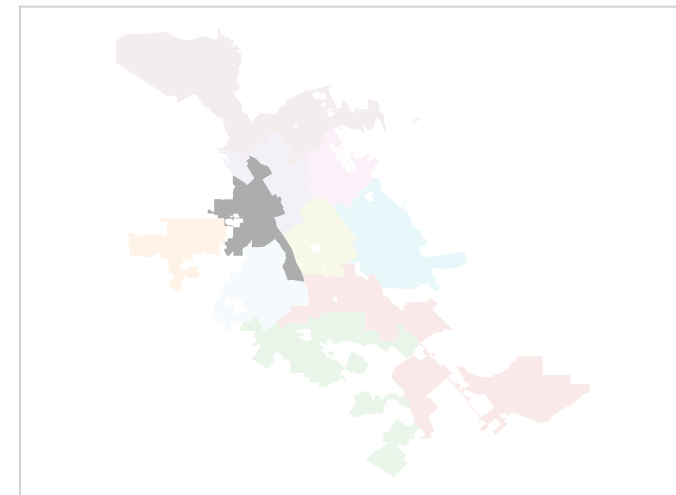
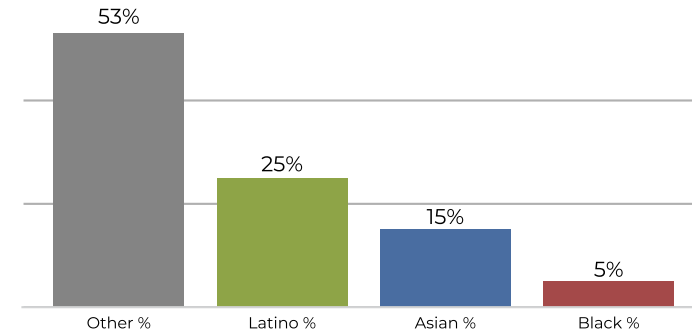
District 6



2020 Census

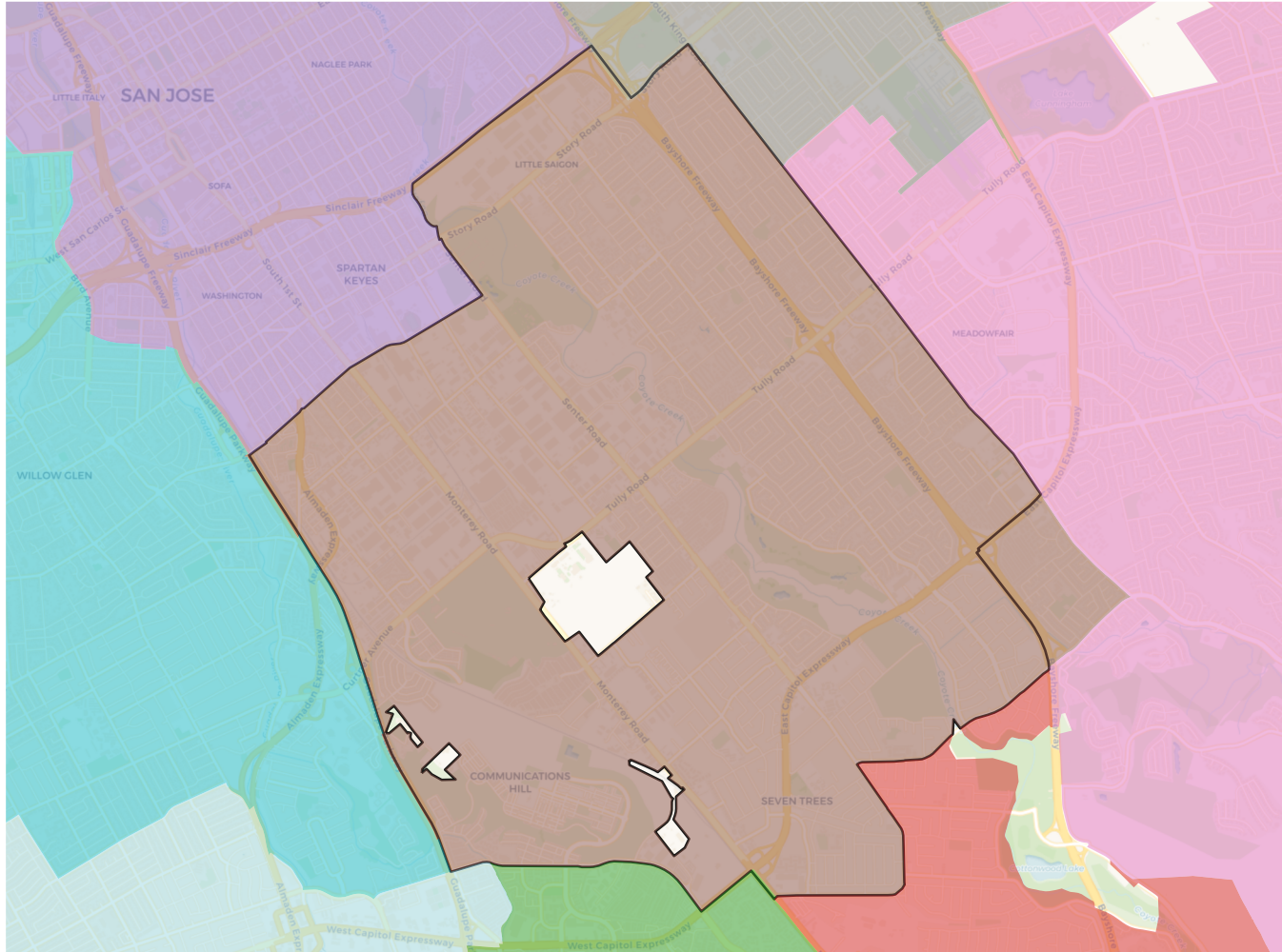


Citizen Voting Age Population

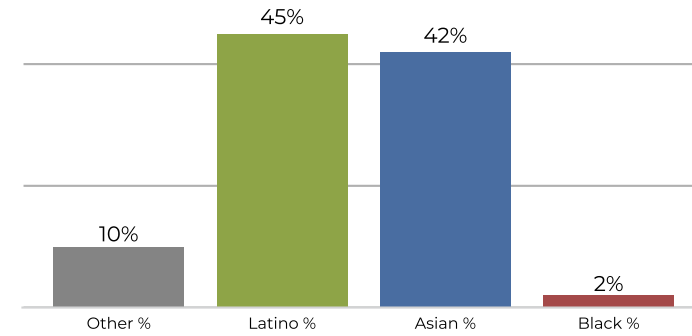


Population	Deviation	Deviation %	Other	Other %	Latino	Latino %	Asian	Asian %	Black	Black %
102,737	1,424	1.4%	41,141	40.0%	35,205	34.3%	21,521	20.9%	4,870	4.7%
Total CVAP	Other CVAP	Other CVAP %	Latino CVAP	Latino CVAP %	Asian CVAP	Asian CVAP %	Black CVAP	Black CVAP %		
66,342	35,372	53.3%	16,891	25.5%	10,278	15.5%	3,801	5.7%		

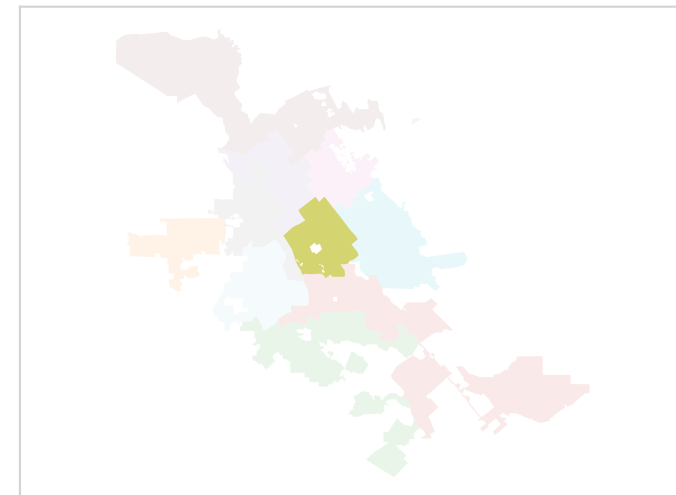
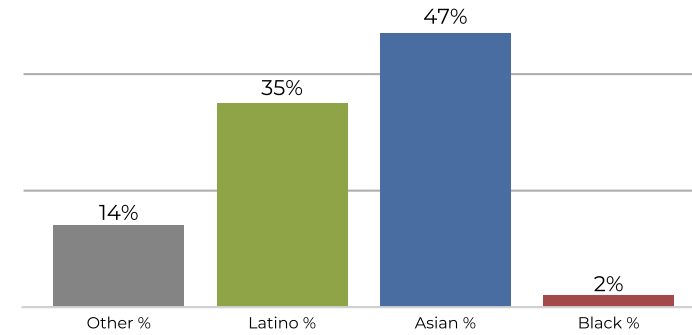
District 7



2020 Census

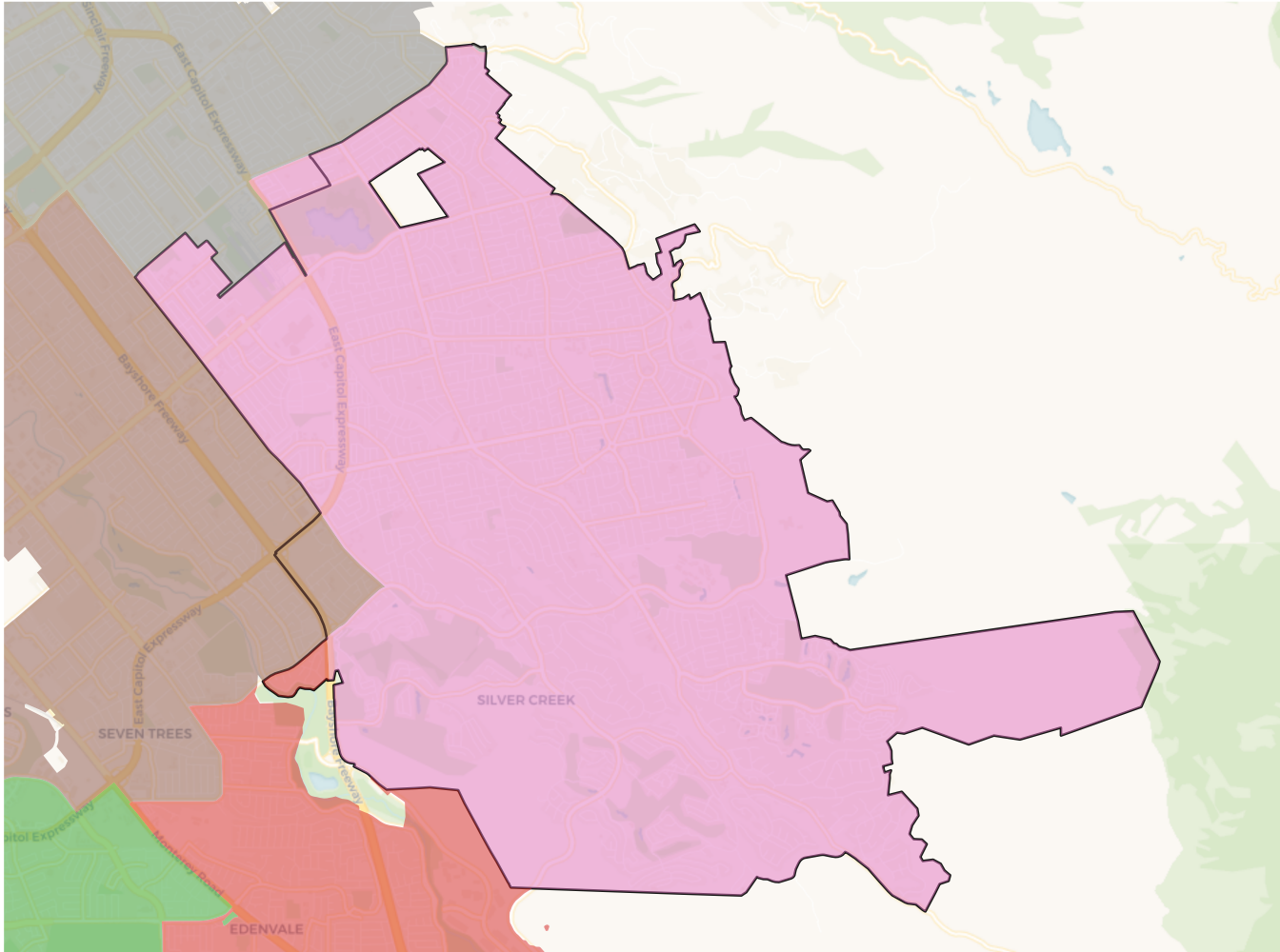


Citizen Voting Age Population

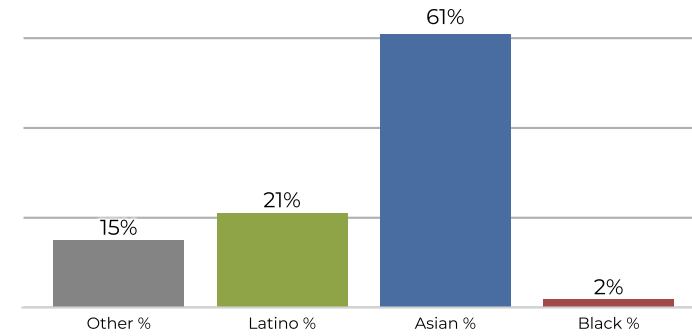


Population	Deviation	Deviation %	Other	Other %	Latino	Latino %	Asian	Asian %	Black	Black %
98,070	-3,243	-3.2%	9,903	10.1%	44,418	45.3%	41,337	42.2%	2,412	2.5%
Total CVAP	Other CVAP	Other CVAP %	Latino CVAP	Latino CVAP %	Asian CVAP	Asian CVAP %	Black CVAP	Black CVAP %		
56,118	8,353	14.9%	19,774	35.2%	26,671	47.5%	1,320	2.4%		

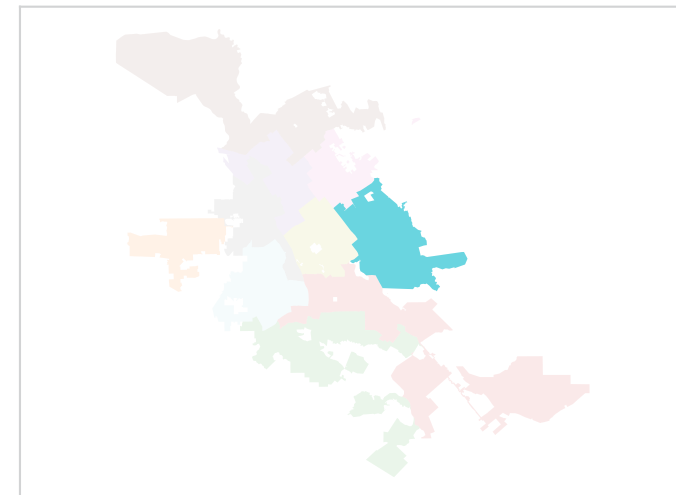
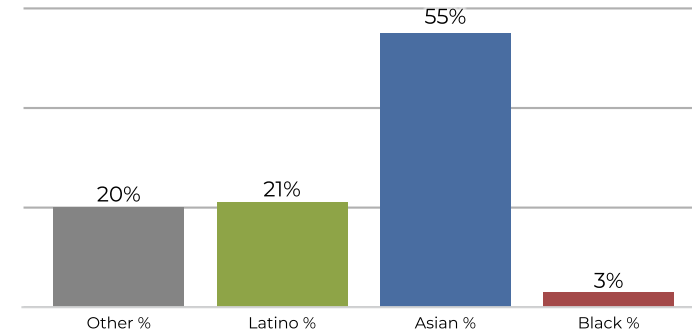
District 8



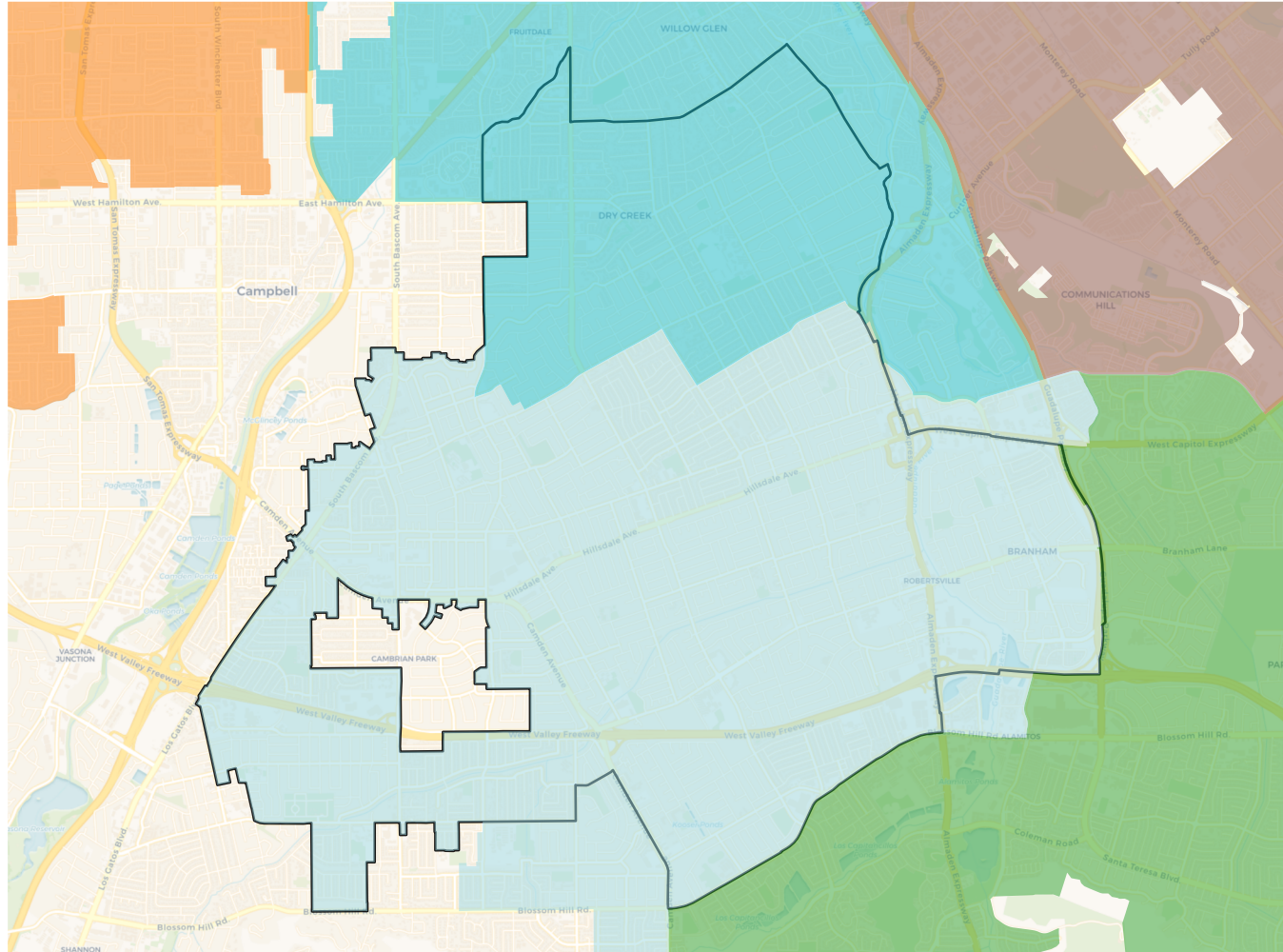
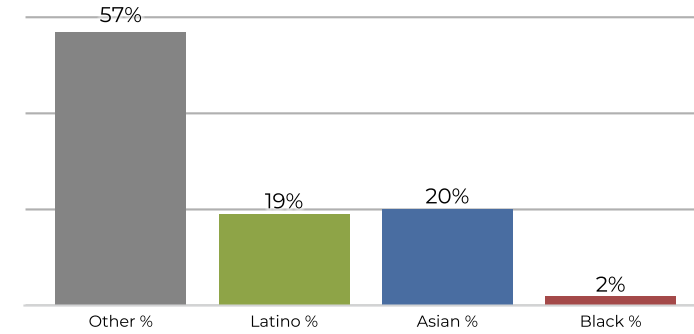
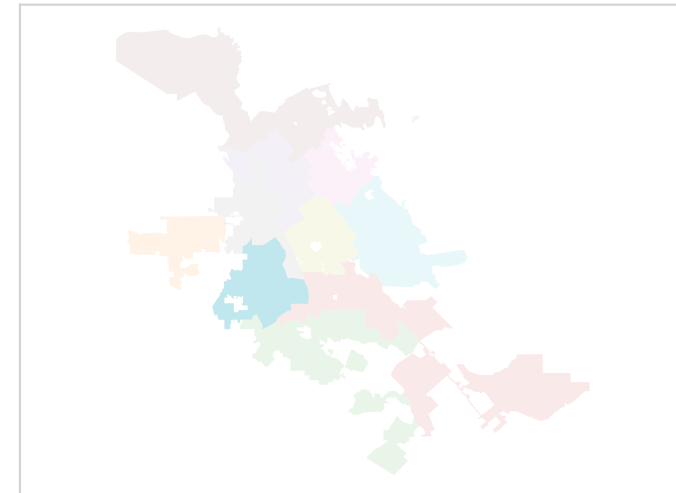
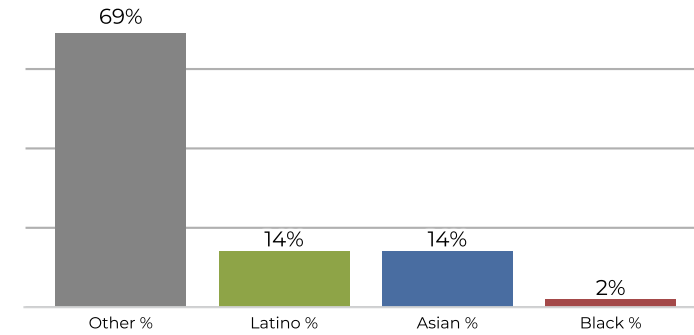
2020 Census



Citizen Voting Age Population



Population	Deviation	Deviation %	Other	Other %	Latino	Latino %	Asian	Asian %	Black	Black %
101,650	337	0.3%	15,255	15.0%	21,975	21.6%	62,315	61.3%	2,105	2.1%
Total CVAP	Other CVAP	Other CVAP %	Latino CVAP	Latino CVAP %	Asian CVAP	Asian CVAP %	Black CVAP	Black CVAP %		
70,532	14,366	20.4%	15,189	21.5%	38,805	55.0%	2,173	3.1%		

District 9

2020 Census

Citizen Voting Age Population


Population	Deviation	Deviation %	Other	Other %	Latino	Latino %	Asian	Asian %	Black	Black %
103,040	1,727	1.7%	59,152	57.4%	20,230	19.6%	21,549	20.9%	2,109	2.0%
Total CVAP	Other CVAP	Other CVAP %	Latino CVAP	Latino CVAP %	Asian CVAP	Asian CVAP %	Black CVAP	Black CVAP %		
69,402	47,880	69.0%	10,266	14.8%	9,804	14.1%	1,452	2.1%		