

3

Environmental Perspective

Participants

Andrea Mackenzie

General Manager, Santa Clara County Open Space Authority

Dr. Andy Collison

Fluvial Director, Environmental Science Associates (ESA)

Norma Camacho

CEO, Santa Clara Valley Water District

Walter Moore

President, POST

Louise Bedsworth

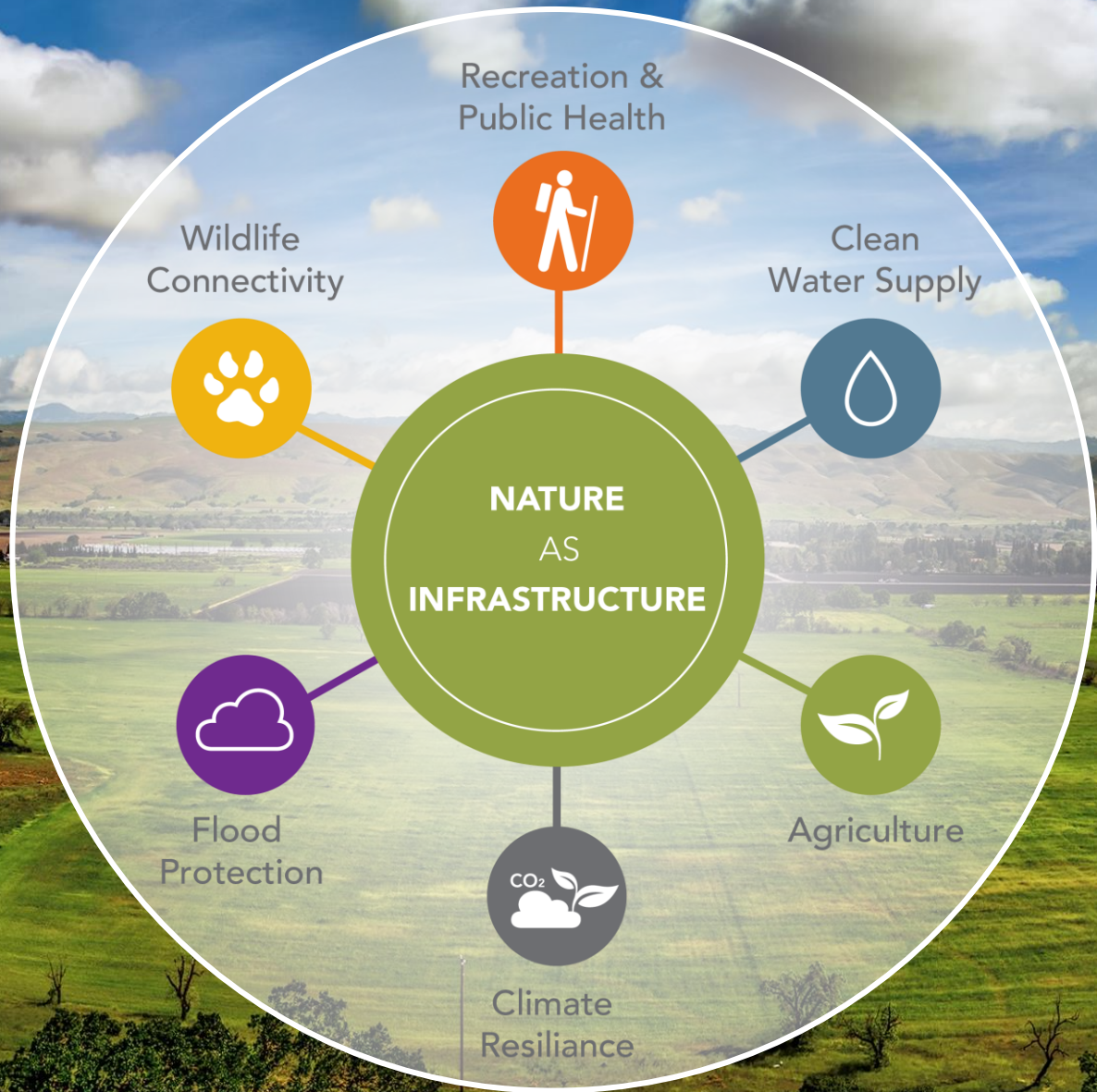
Executive Director, California Strategic Growth Council

Matt Cano

Director of Public Works, City of San Jose

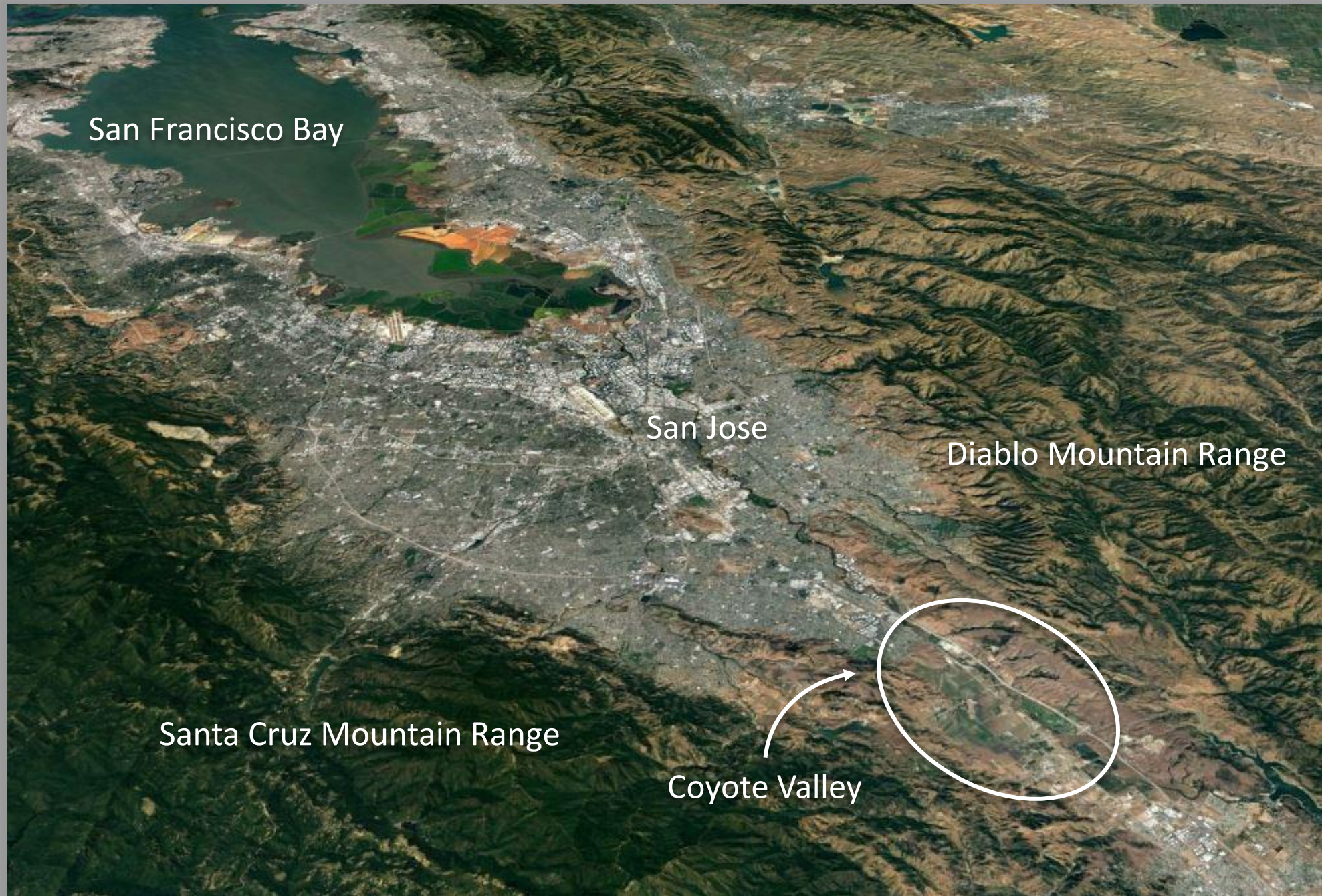
COYOTE VALLEY

AN IRREPLACEABLE
MULTI-BENEFIT LANDSCAPE



ESSENTIAL ENVIRONMENTAL, ECONOMIC, AND COMMUNITY BENEFITS

- Improved air quality
- Wildlife protection
- Water quality protection
- Flood attenuation
- Local food production
- Ecosystem resilience to climate change
- Public health and enjoyment
- Protection of life and property from Wildland Fire Management
- Carbon Sequestration, Climate Adaptation, and Resilience



San Francisco Bay

San Jose

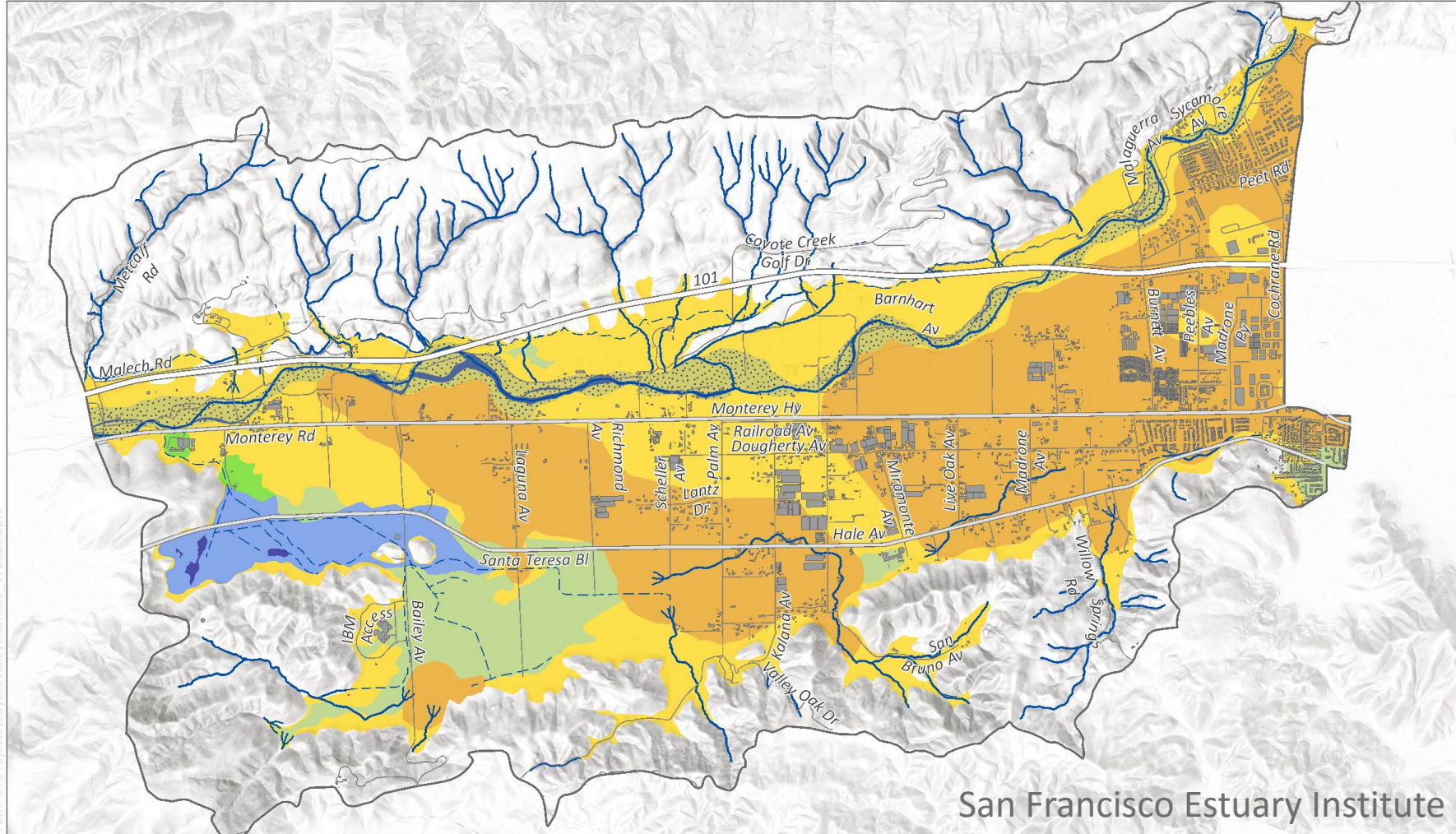
Diablo Mountain Range

Santa Cruz Mountain Range

Coyote Valley

Last Remaining Valley Floor Habitats

Historical Ecology

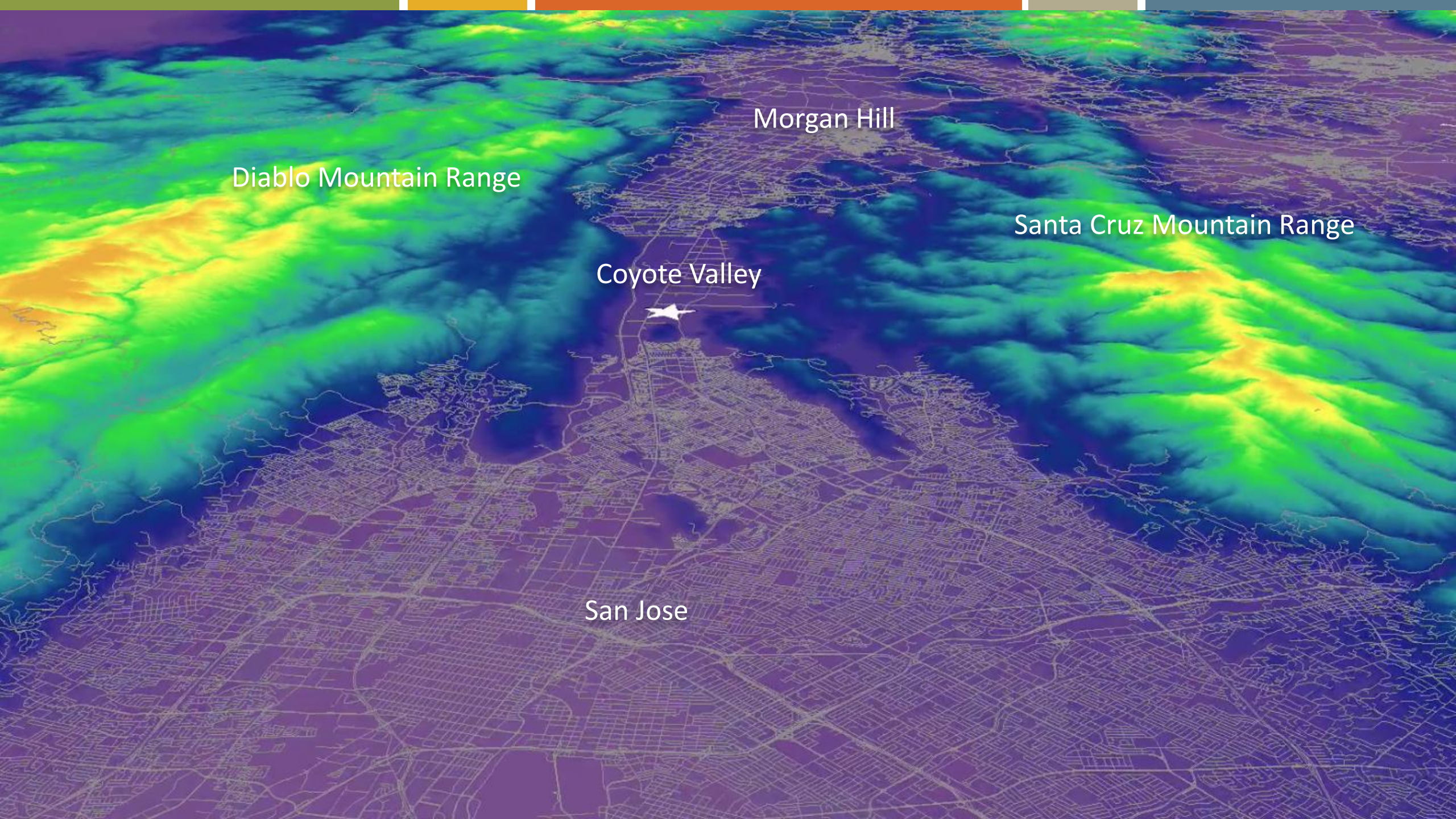


Path: G:\Projects\CoyoteValley\Charette_170320.aprx

- Historic Creek
- Modern Creek Addition
- Oak Savanna
- Oak Woodland
- Perennial Pond
- Freshwater Marsh
- Wet Meadow
- Willow Grove
- Riparian

COYOTE VALLEY & WILDLIFE CONNECTIVITY





Diablo Mountain Range

Morgan Hill

Santa Cruz Mountain Range

Coyote Valley

San Jose

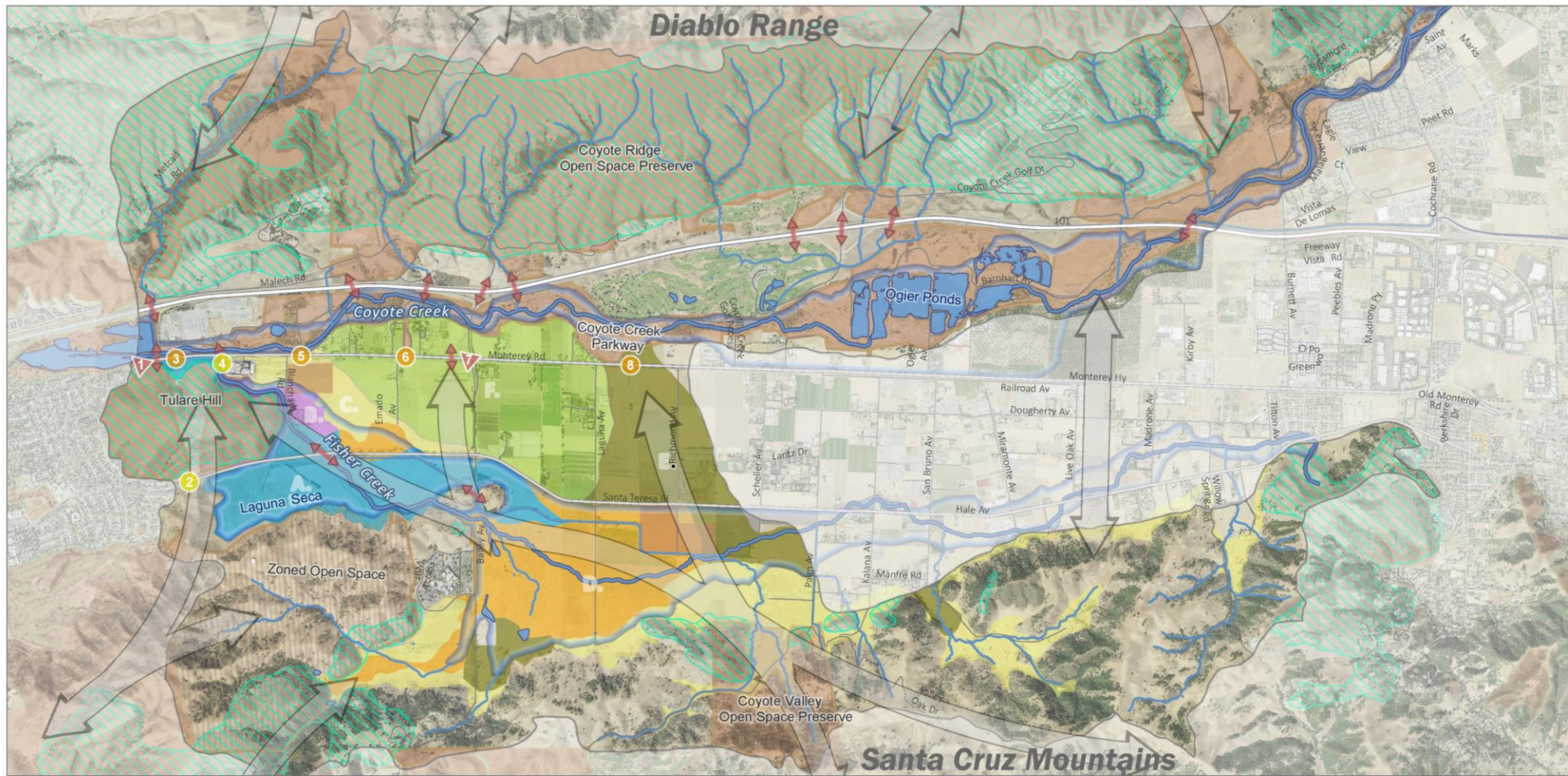


Coyote Valley Landscape Linkage

Conservation for a Resilient Future



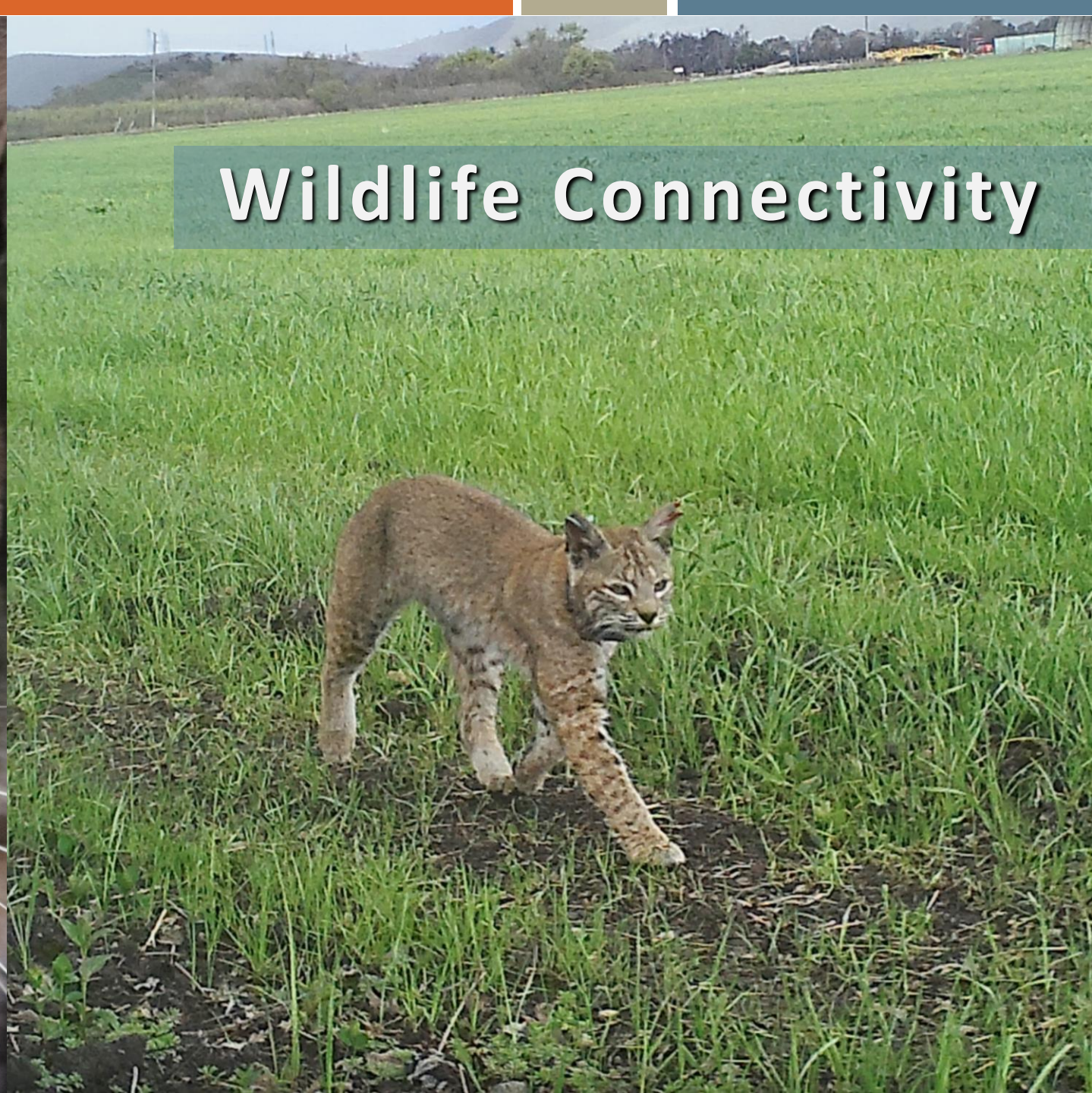
Coyote Valley: Landscape Linkage Vision



- | | | | | |
|--------------------------------|--------------------|---------------------------------|----------------------|-----------------------|
| ◁▷ General Wildlife Pathways | ● Enhanced Culvert | ◻ Oak Savanna | ◻ Willow Grove | ◻ Serpentine |
| ◄ Documented Wildlife Pathways | ● New Culvert | ◻ Oak Woodland / Orchard | ◻ Freshwater Wetland | ◻ Restored Floodplain |
| ◻ Protected Lands | ▲ New Overpass | ◻ Wildlife Friendly Agriculture | ◻ Wet Meadow | |

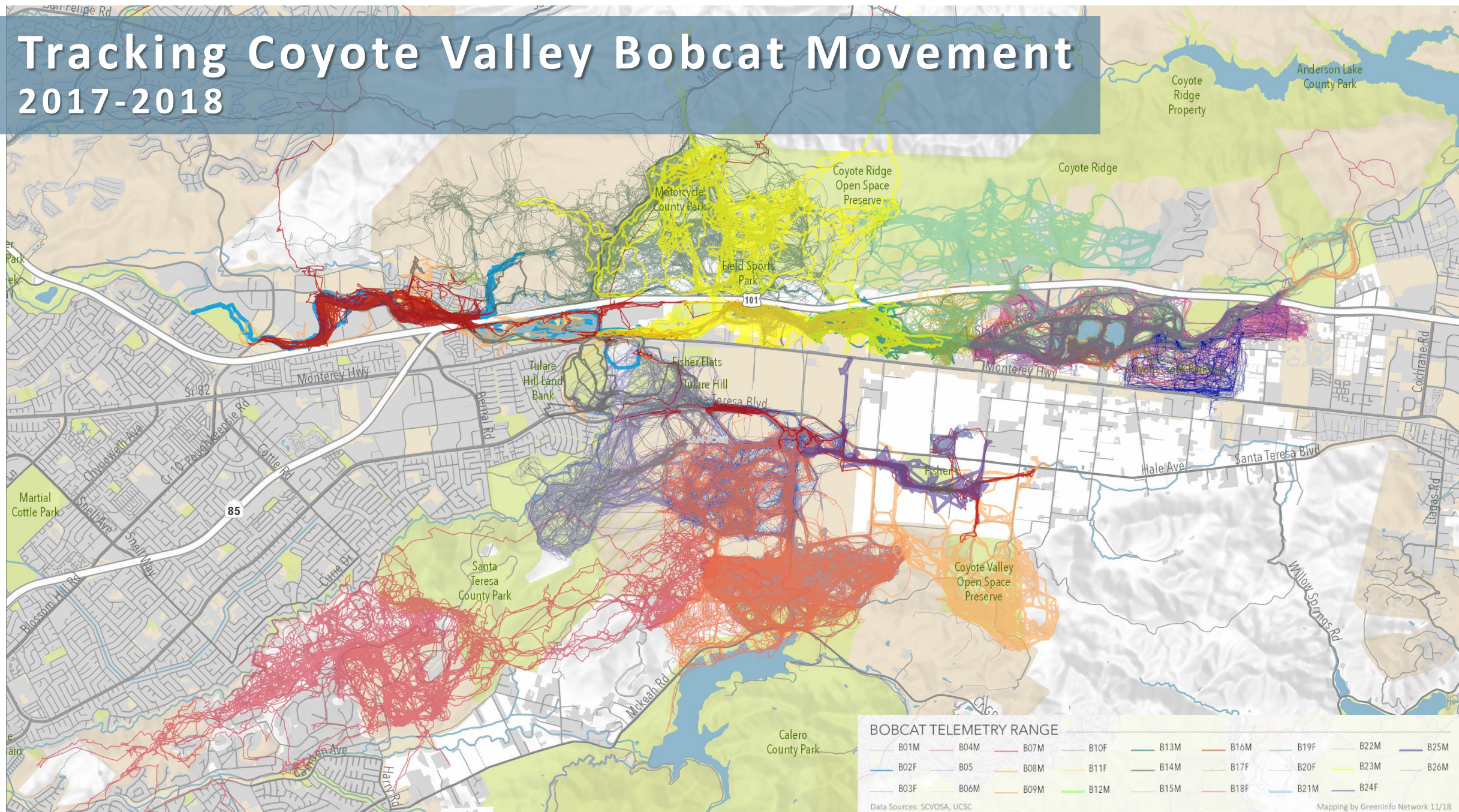




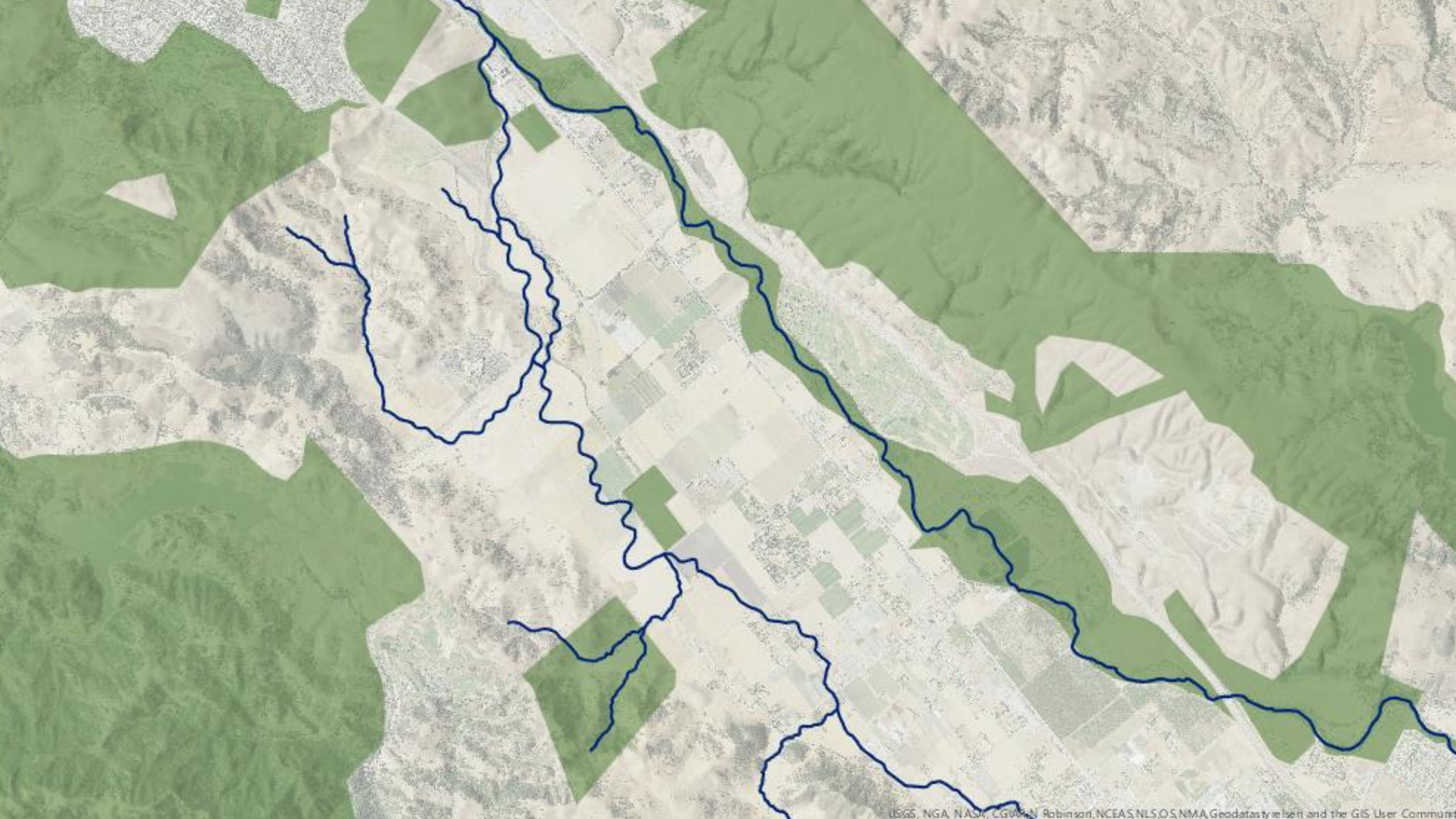


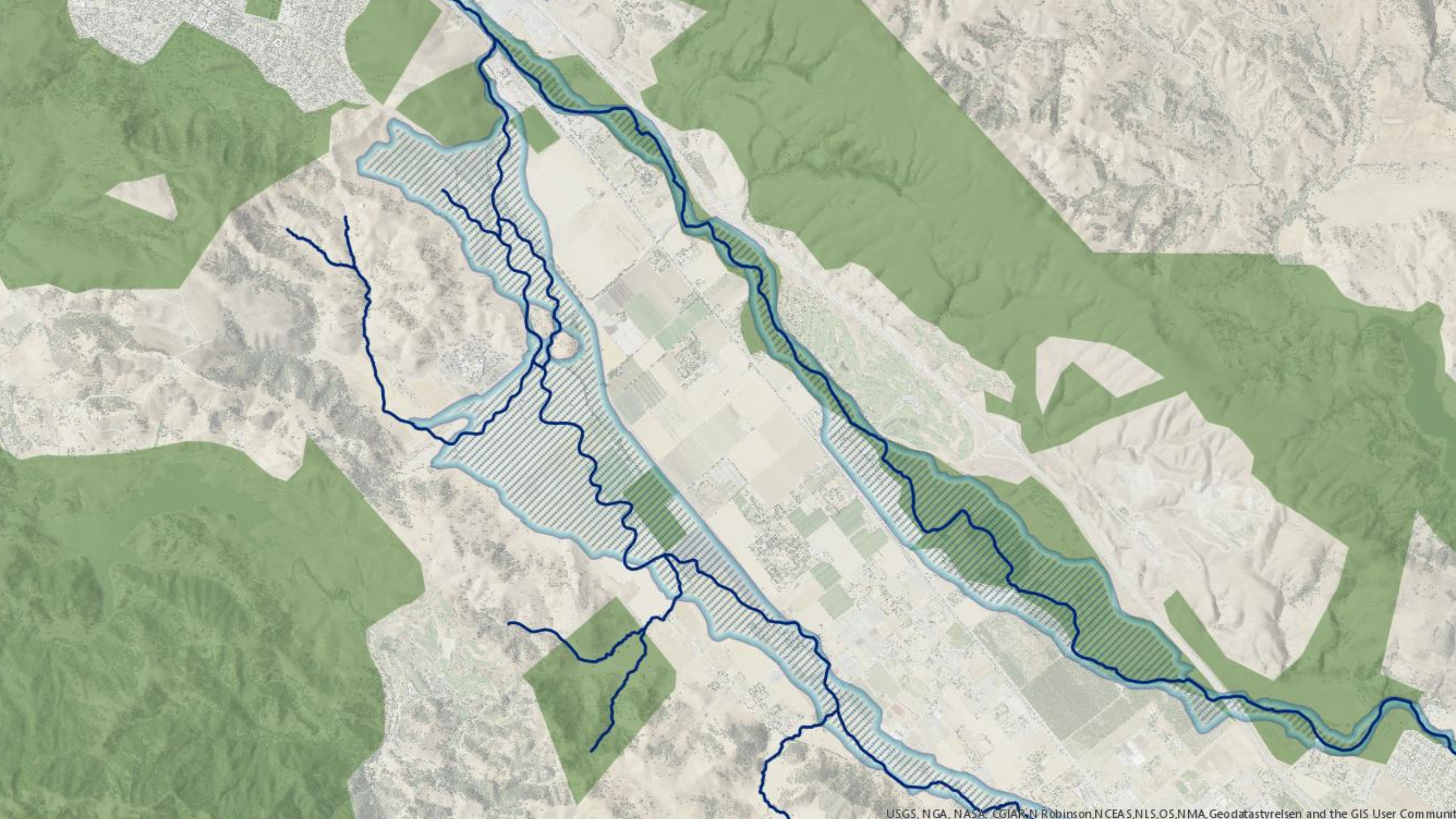
Wildlife Connectivity

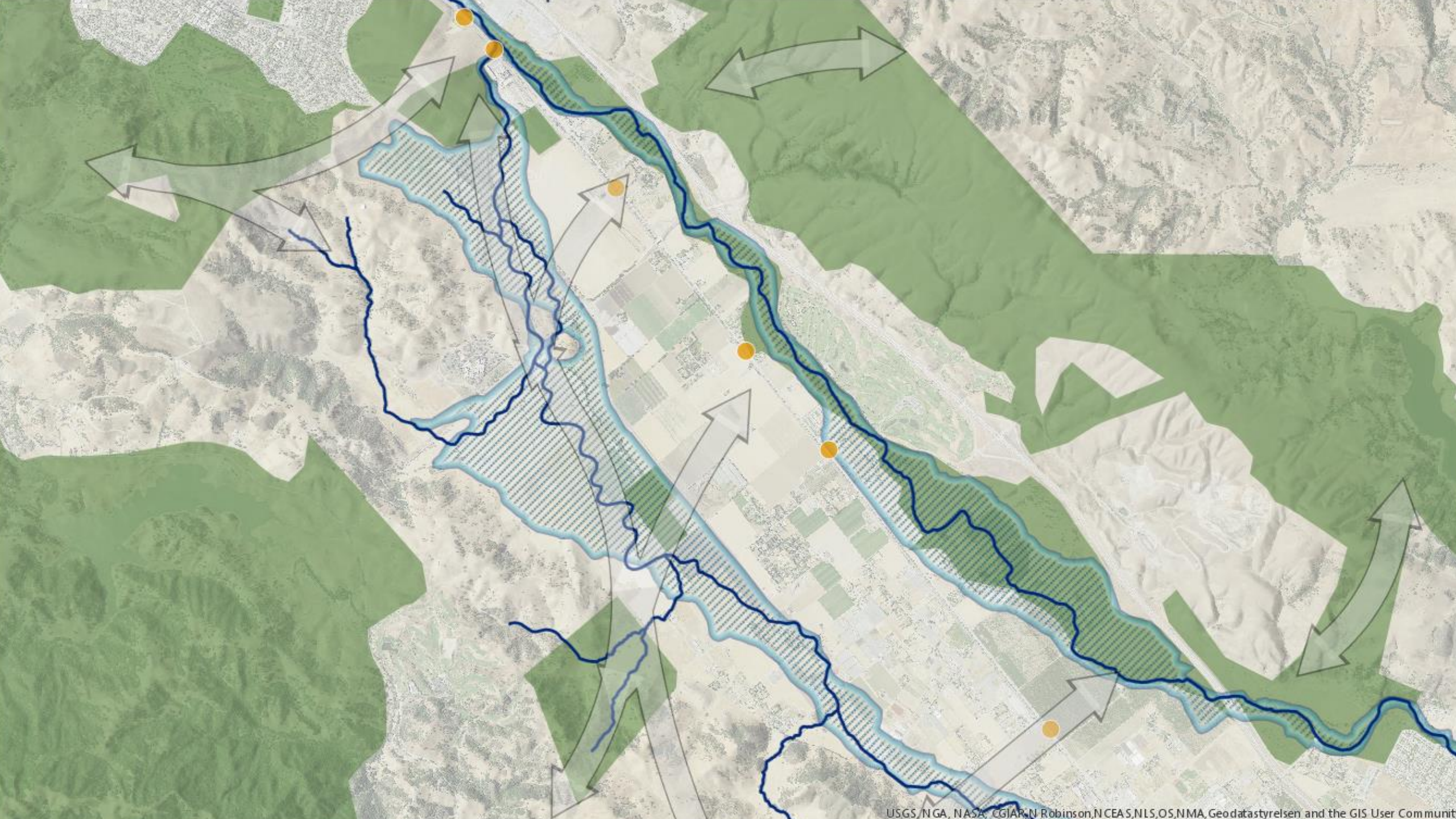
Tracking Coyote Valley Bobcat Movement 2017-2018

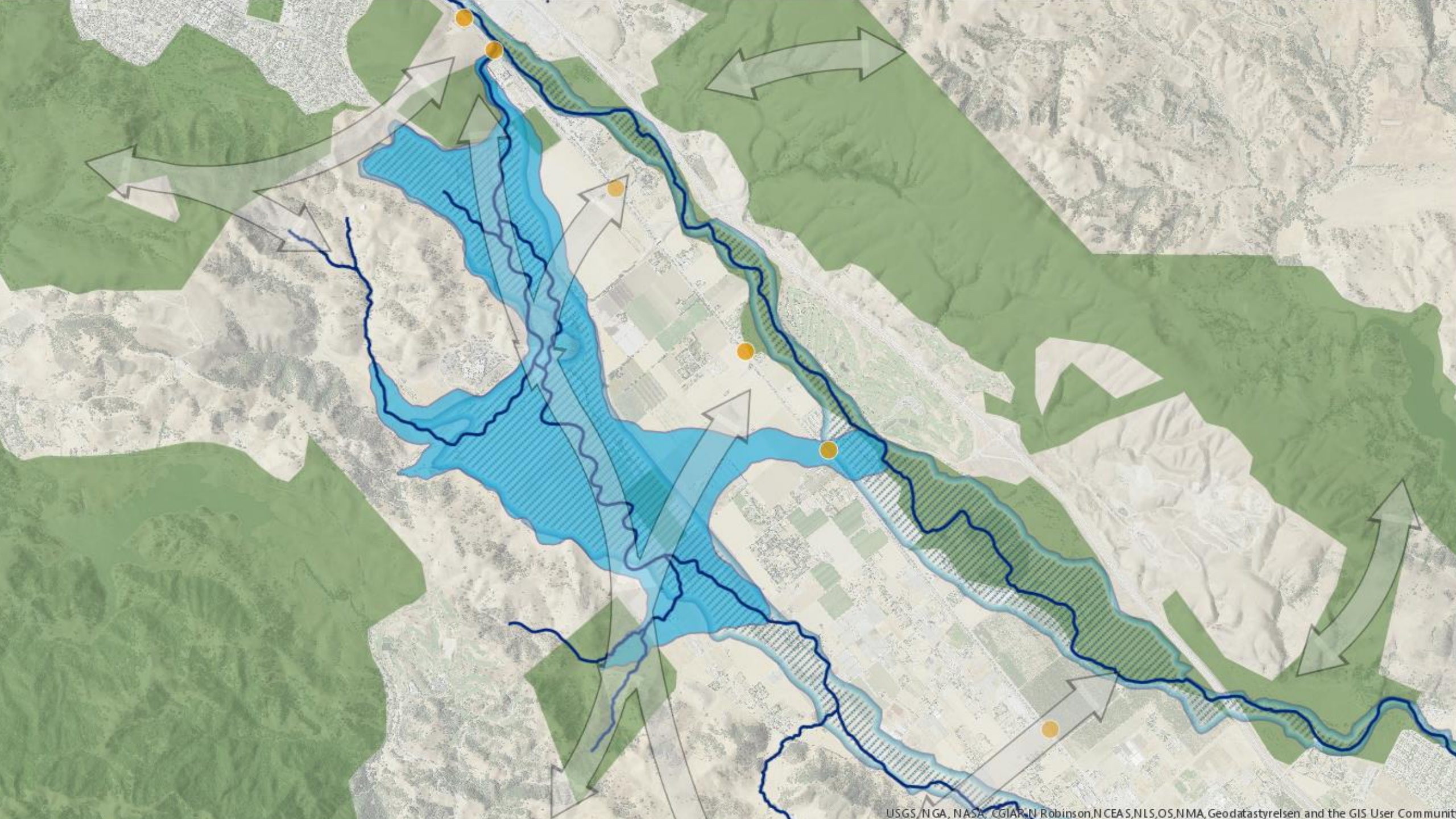


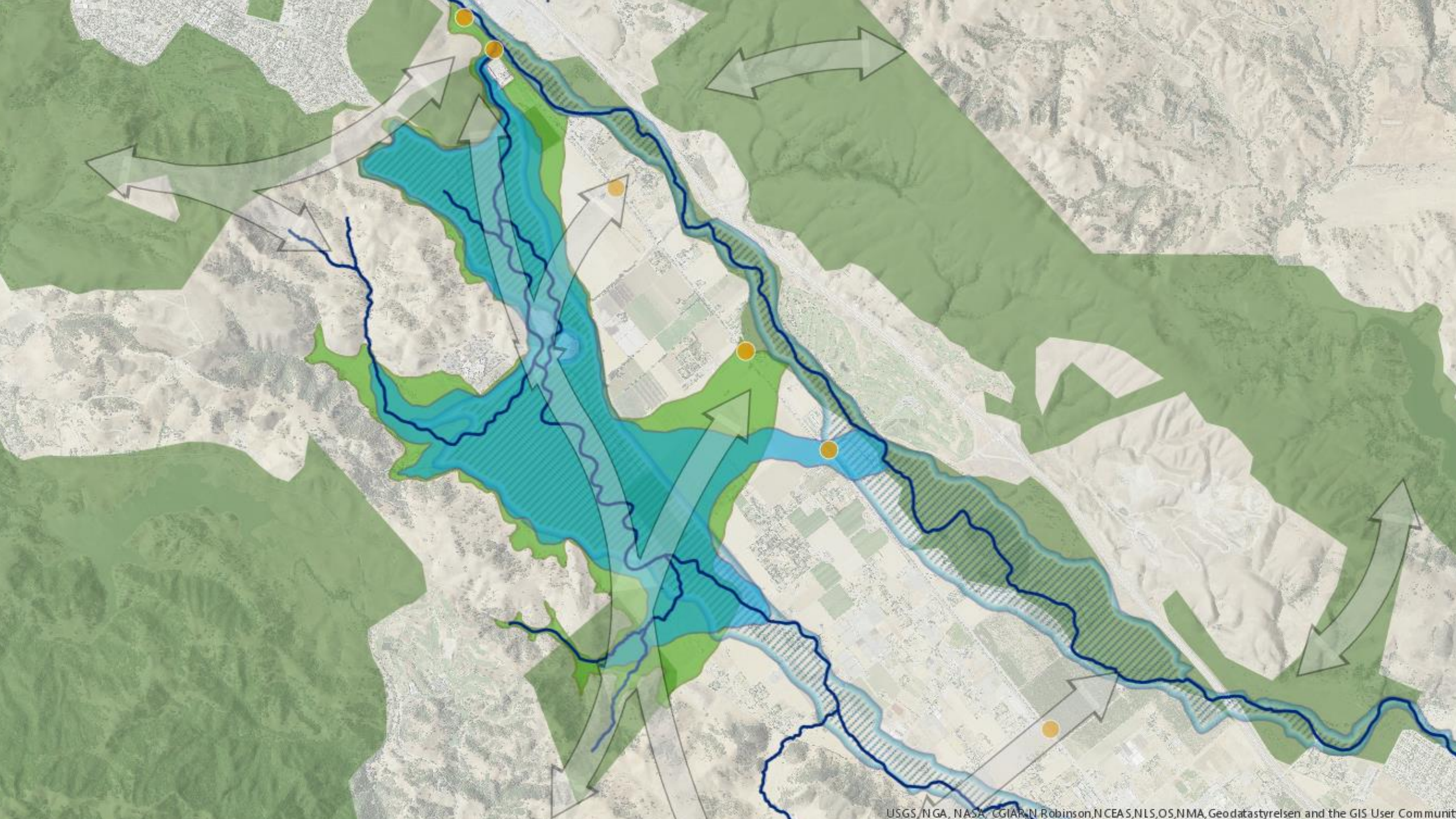


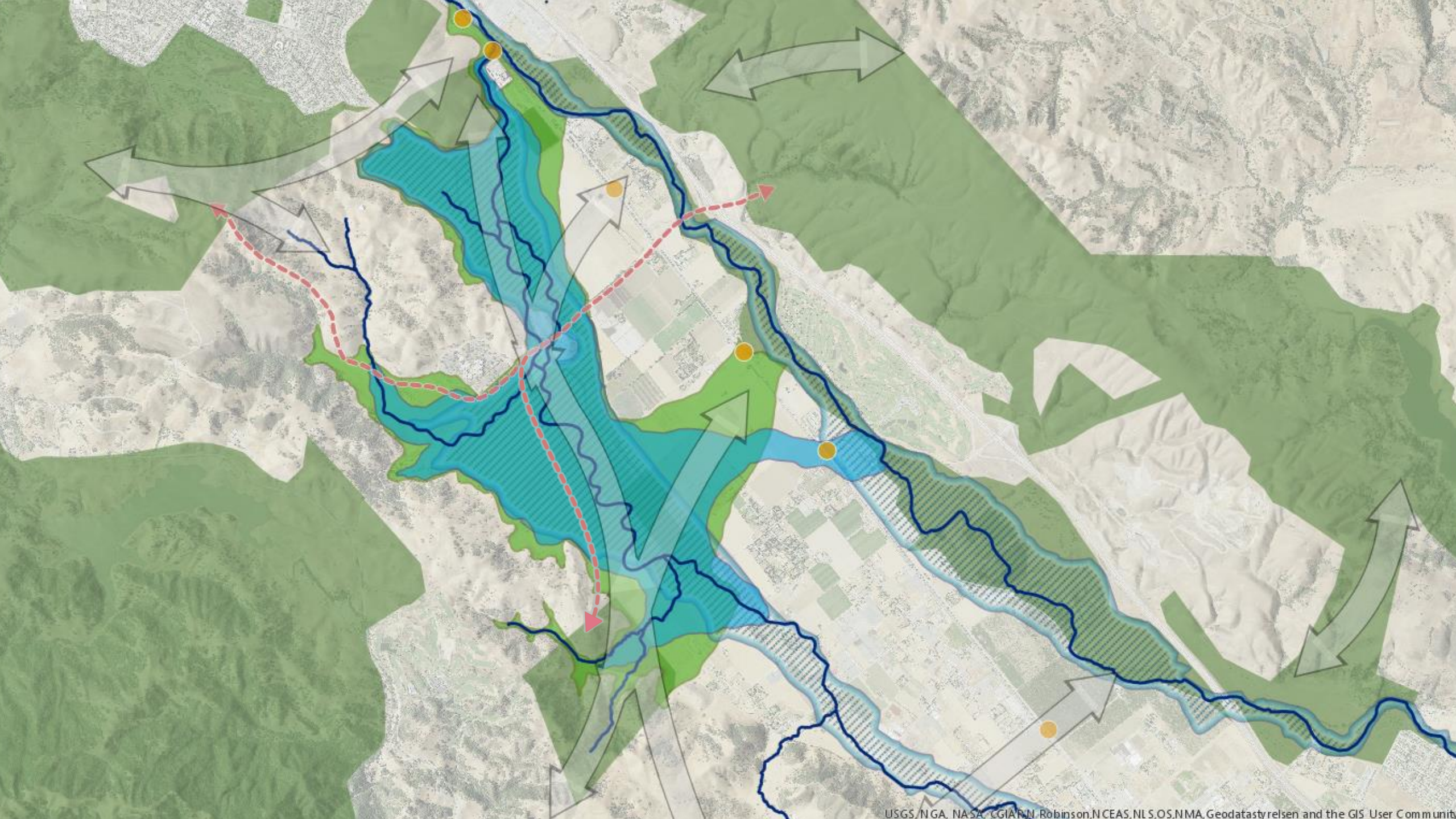












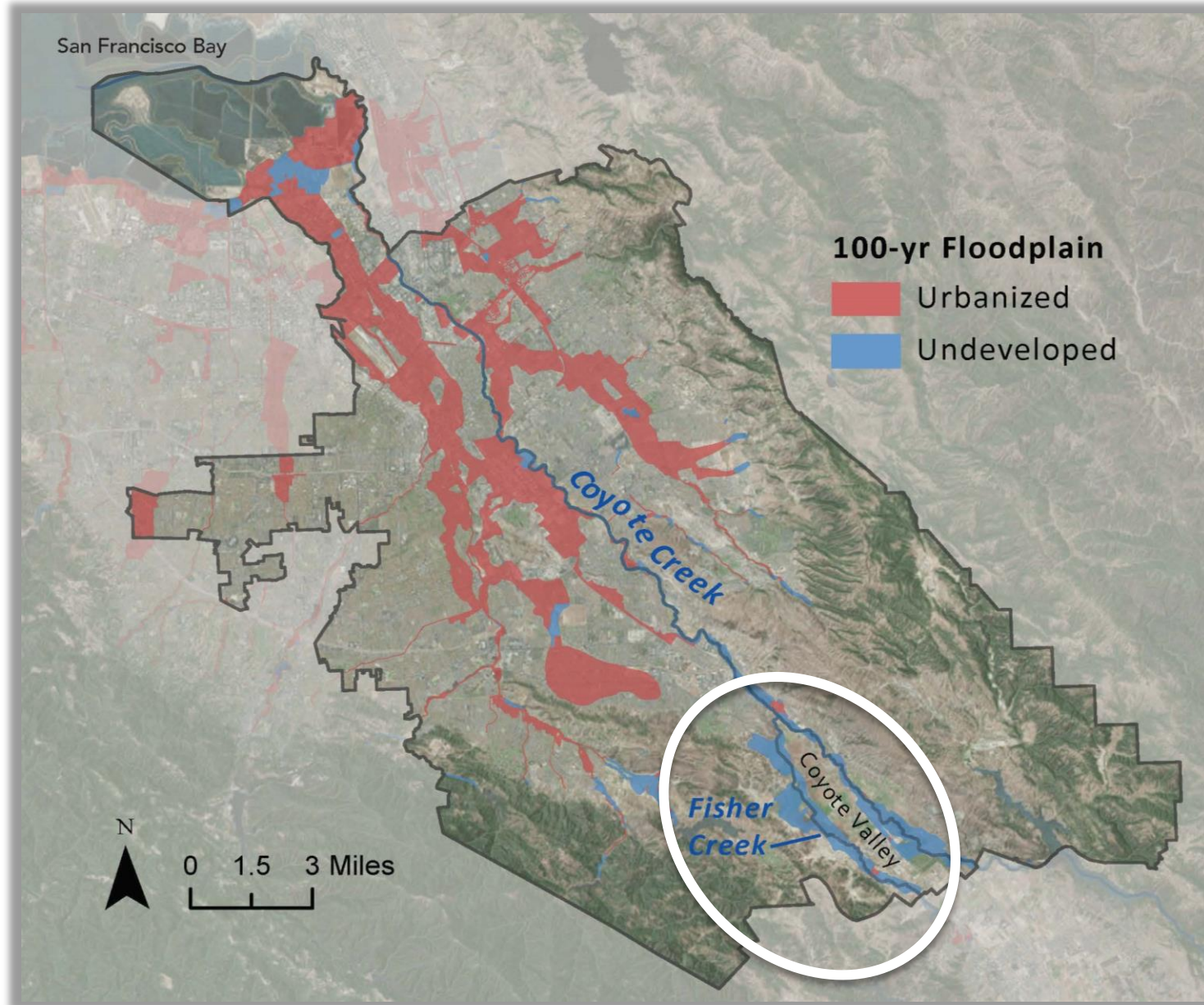


COYOTE VALLEY'S NATURAL FLOODPLAINS & WATER RESOURCES

Northern Laguna Seca



Creek Floodplains in the City of San Jose



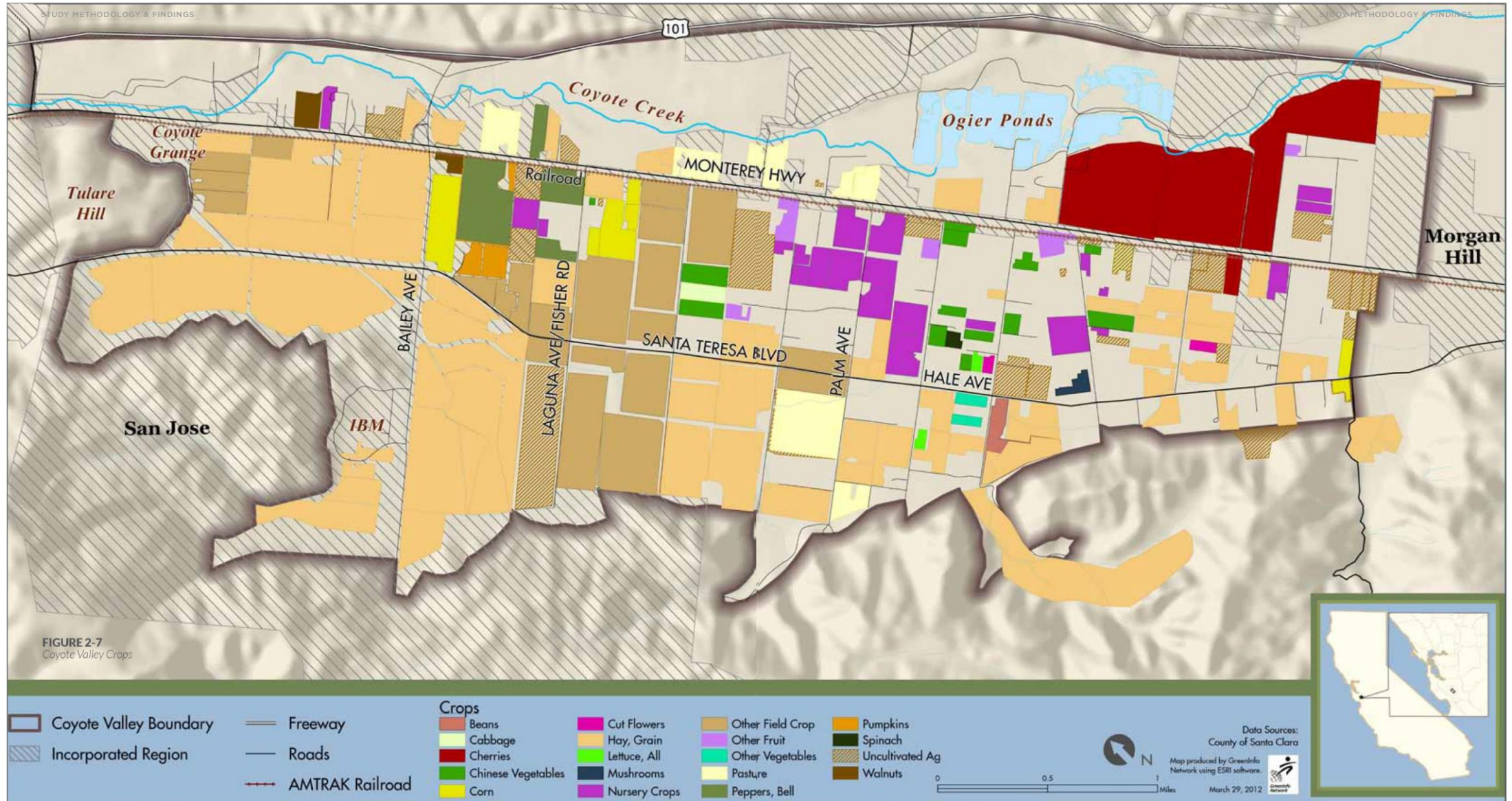


COYOTE VALLEY & AGRICULTURE





Coyote Valley Crop Production





Santa Clara Valley

Agricultural Plan:

INVESTING IN OUR WORKING LANDS
FOR REGIONAL RESILIENCE

December 2017
County of Santa Clara
Santa Clara Valley Open Space Authority

FINAL DRAFT: DECEMBER 5, 2017





**COYOTE
VALLEY AS A
COMMUNITY
ASSET**





Amgen Tour of California Coyote Valley





ECONOMIC BENEFITS OF CONSERVING COYOTE VALLEY



A nighttime photograph of a city skyline, likely Atlanta, Georgia, featuring several illuminated skyscrapers. In the foreground, a multi-lane highway shows light trails from moving vehicles, with white trails on the left and red trails on the right. A green 'EXIT' sign with a right-pointing arrow is visible at the bottom center. The sky is dark with some clouds. The word 'ECONOMY' is overlaid in large white letters on the left side of the image.

ECONOMY

A close-up photograph of a vibrant green leaf with numerous water droplets of varying sizes on its surface. The leaf's veins are clearly visible. The word 'ENVIRONMENT' is overlaid in large white letters across the center of the leaf.

ENVIRONMENT

ENVIRONMENT



ECONOMY

ECONOMIC VALUES OF SANTA CLARA COUNTY'S NATURAL & WORKING LANDS

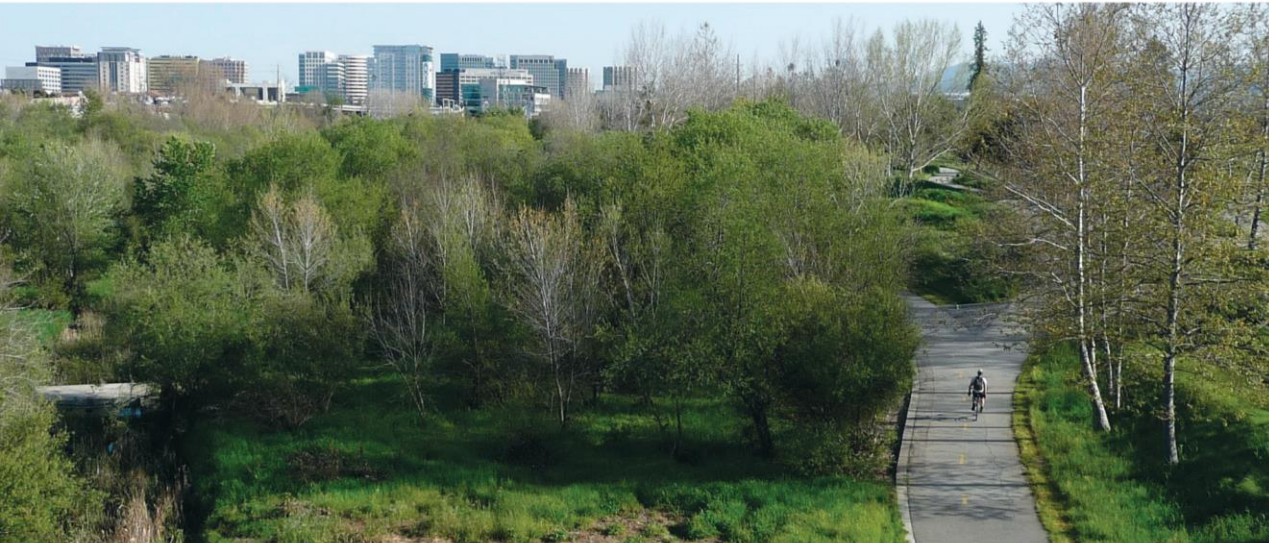
- Ecosystem Services: \$1.6 - \$3.9 Billion
- Agricultural Output: \$1.6 Billion



ECONOMIC & RESILIENCE BENEFITS OF CONSERVING COYOTE VALLEY

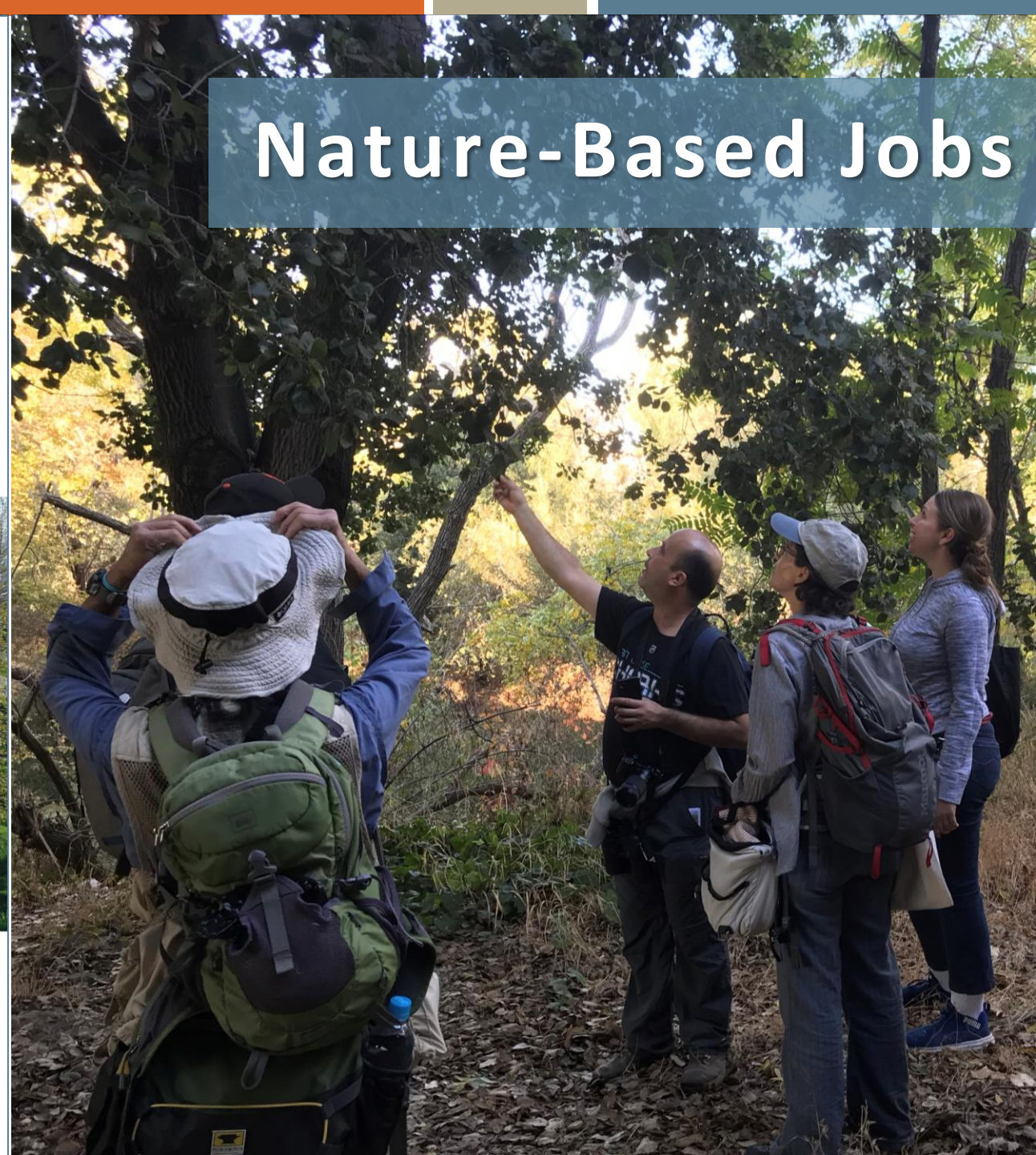
- Avoided GHG from conversion
- Avoided loss of ecosystem function and the cost of single purpose built structures
- Avoided cost of damages to natural floodplains
- Avoided cost of suppressing high severity wildfires
- Public health benefits of nature-based recreation

The Economic Benefits of the
Park & Recreation System in San José, California

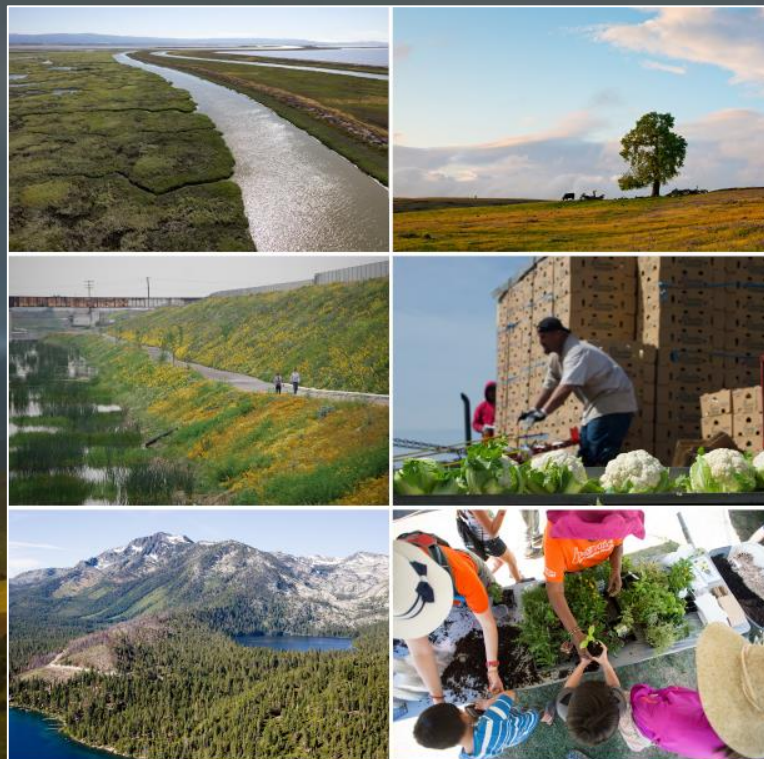


THE
TRUST
FOR
PUBLIC
LAND

Nature-Based Jobs



CLIMATE RISK & RESILIENCE



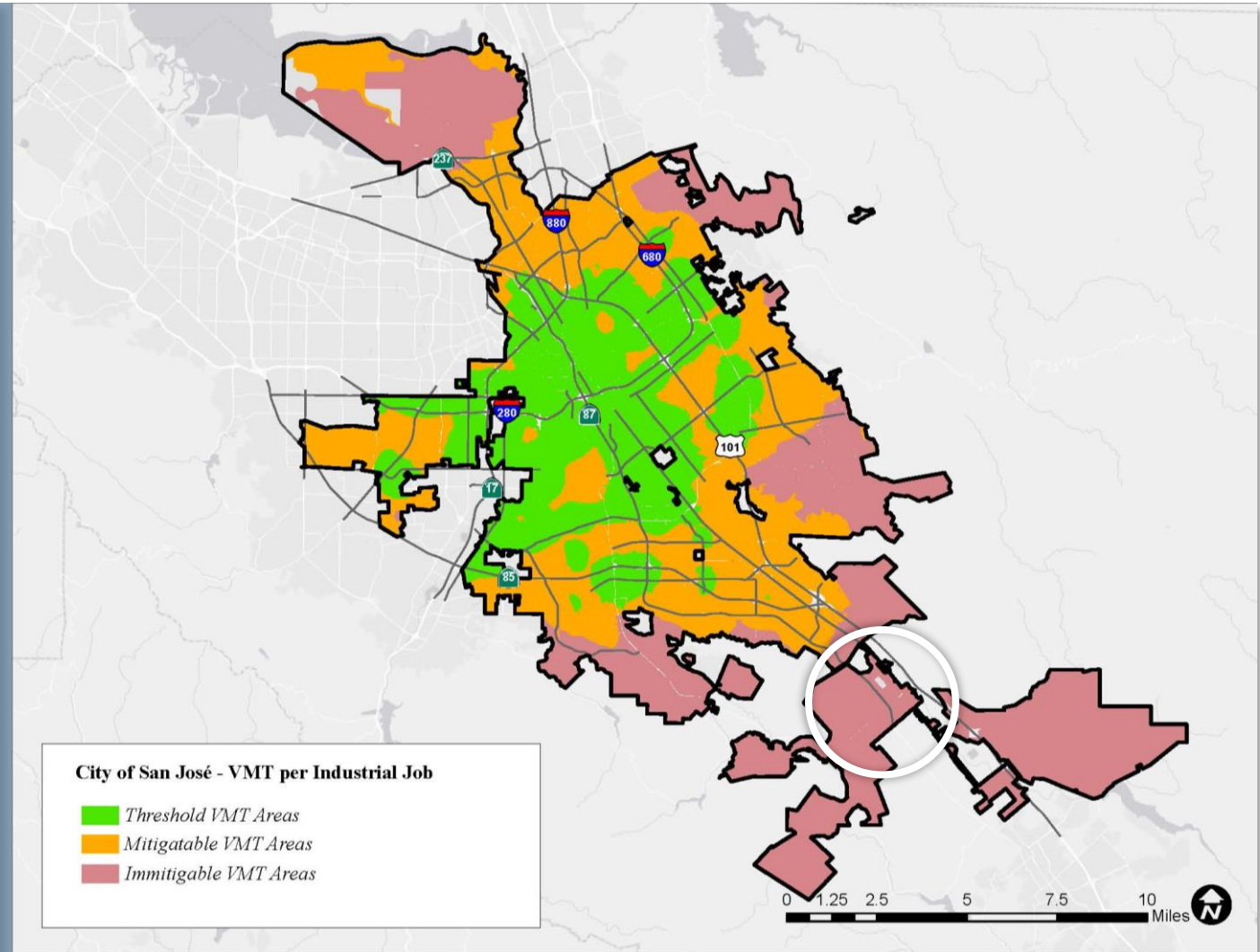
JANUARY 2019 DRAFT California 2030 Natural and Working Lands Climate Change Implementation Plan



VMT Per Job in the City of San Jose

www.sanjoseca.gov/vmt

“Projects consistent with this Policy will *reduce the City’s environmental footprint from transportation and land uses*, and create lively places served by a variety of transportation options.”



Fourth National Climate Assessment

Triple Harvest:
Farmland conservation for climate protection, smart growth and food security in California

February 2013

A guide for protecting open space and livable communities

SANTA CLARA VALLEY OPEN SPACE PLAN

HEALTHY LANDS & HEALTHY ECONOMIES:

NATURE'S VALUE IN SANTA CLARA COUNTY

LANDSCAPE RESILIENCE

CLIMATE SMART SAN JOSE



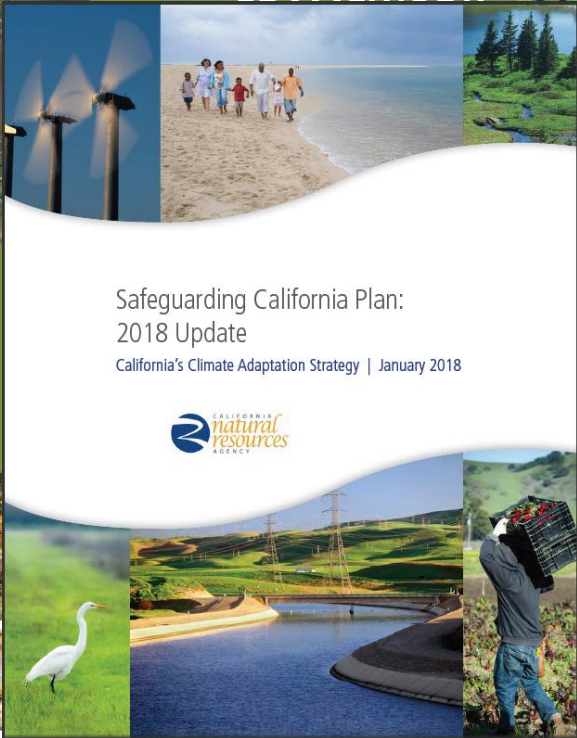
Statewide Summary Report



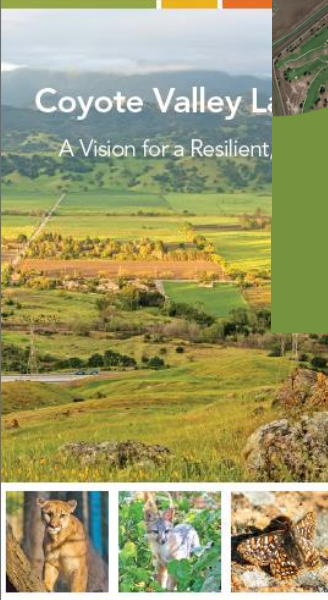
Coordinating Agencies:



Safeguarding California Plan:
2018 Update
California's Climate Adaptation Strategy | January 2018



Coyote Valley Landscape
A Vision for a Resilient



JANUARY 2019 DRAFT California 2030 Natural and Working Lands Climate Change Implementation Plan



Prepared by the SANTA CLARA VALLEY OPEN SPACE AUTHORITY with the CONSERVATION BIOLOGY INSTITUTE



LANDS AND CLIMATE CHANGE
WE CAN DO THEM
HABITAT GOALS
UPDATE 2015



Department of Fish & Wildlife, Cheryl Ellemberg, City of
San Jose, Ryan Phillips, Sibella Kraus, Spina Farms, Stephen

