

# City Council Hearing

---

September 10, 2019



*Planning, Building and  
Code Enforcement*

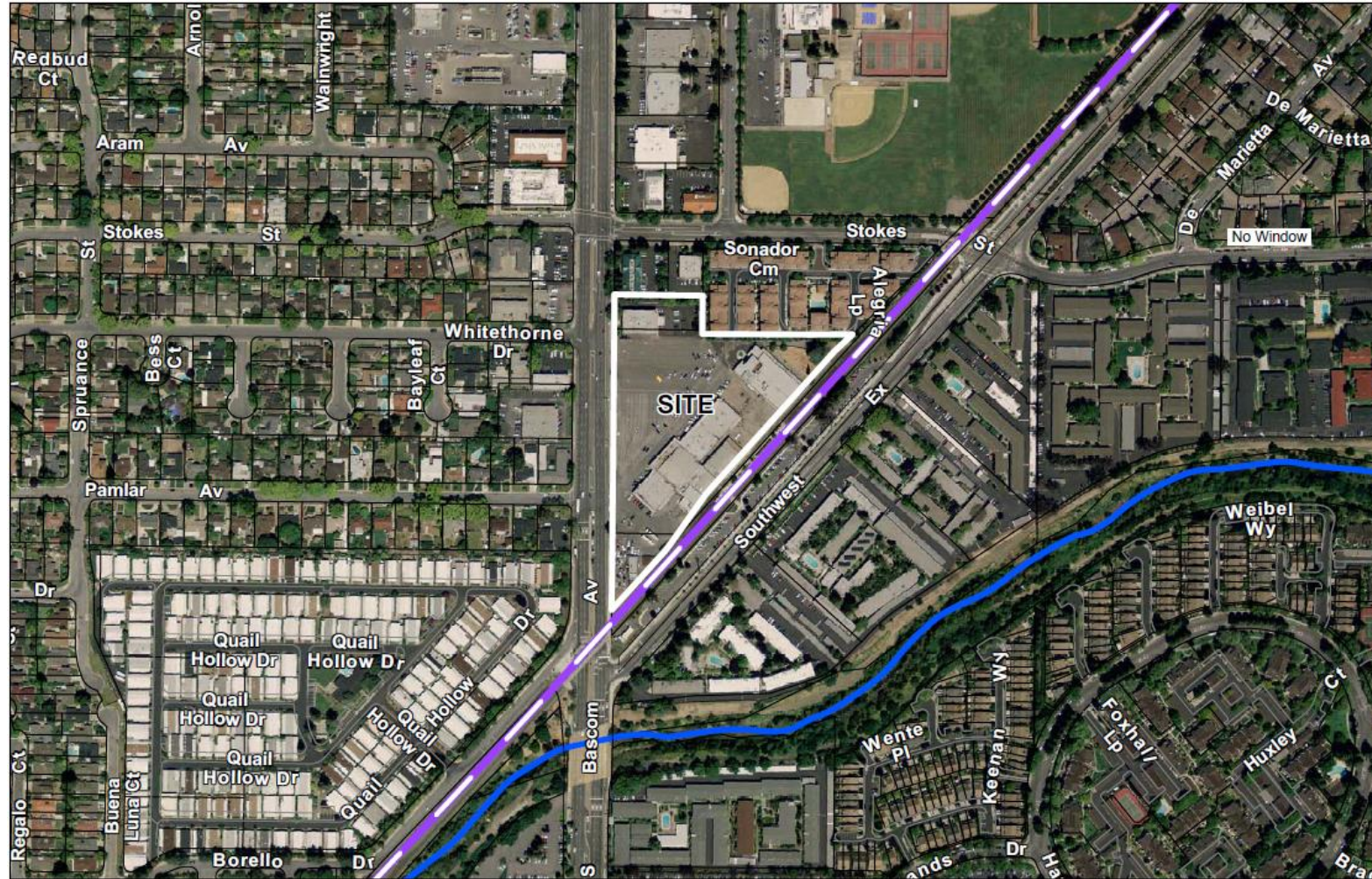
# Item 10.2

PDC17-047 & PD18-015 Planned Development Zoning and Planned Development Permit for Real Property Located at 1330, 1388 and 1410 South Bascom Avenue

Presenters: Rosalynn Hughey, Director, PBCE

Jennifer Piozet, Supervising Planner, PBCE

# Aerial



# Site Plan



**SHEET INDEX**

L-10.1	Landscape plan - Overall
L-10.2	Landscape enlargement plan - site park and plaza
L-10.3	Landscape enlargement plan - podium
L-10.4	Landscape enlargement plan - office level 5 and 10
L-10.5	Landscape sections
L-10.6	Landscape imagery
L-10.7	Landscape planting plan - overall
L-10.8	Landscape planting notes and legends
L-10.9	Landscape lighting plan - overall
L-10.10	Landscape lighting plan - outshafts
L-10.11	Landscape details

# Rendering

---



Q&A / Discussion