

City of San José

City Council Study Session on Emergency Management

April 03, 2025



Facilitators:

Assistant City Manager, Lee Wilcox

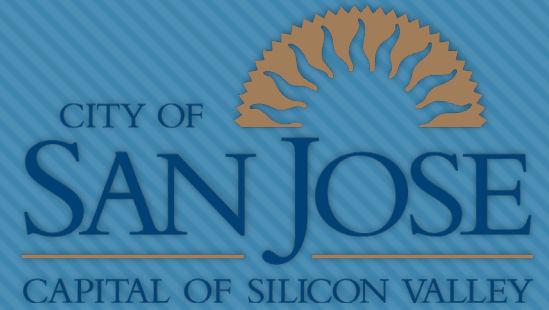
Deputy City Manager, Jennifer Schembri

Director, Office of Emergency Management, Raymond Riordan

Presenters:

Senior Executive Analyst, Office of Emergency Management, Karen Truong

Introduction



- Mayor's Welcoming Remarks
- City Manager's Opening Remarks

Study Session Structure

- Introduction – 5 minutes
- Module 1 – 45 minutes
- Module 2 – 115 minutes
- Public Comment – 10 minutes
- Closing Remarks – 5 Minutes

Overview



- This Study Session will provide an overview on:
 1. Recent Emergency Management Organization (EMO) activations,
 2. The role of the elected officials during an emergency,
 3. Purpose of the Disaster District Office (DDO),
 4. Continuity of Operations Plan (COOP), and
 5. EMO functions.

Facilitators and Presenter



MODULE 1

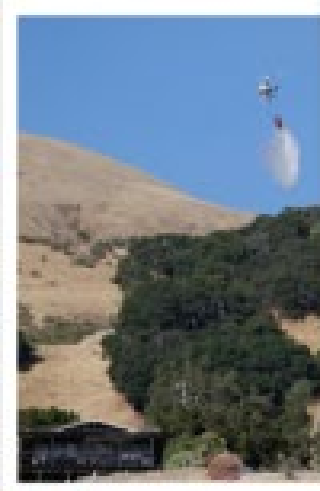
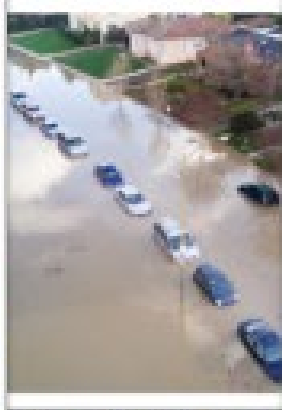
- Ray Riordan, Director, Office of Emergency Management
- Karen Truong, Senior Executive Analyst, Office of Emergency Management

MODULE 2

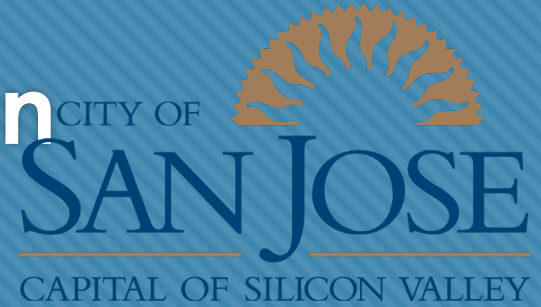
- Lee Wilcox, Assistant City Manager
- Jennifer Schembri, Deputy City Manager

Module #1 Overview

1. Review of past Emergency Management Organization activations
2. Discuss recent experiences
3. Present on Disaster District Offices



Emergency Management Organization Activations



2022	2023	2024	2025
COVID-19		Winter Storm Events	Cold Weather Event
Winter Storm & Atmospheric River Events		Excessive Heat Events	Inclement Weather Events
Home Depot Fire		PG&E PSPS #5	
Extreme Heat Event		National Election Safety	
PG&E PSPS #4		Humboldt EQ/Tsunami	

Recent Experiences

- Understanding that the City is faced with many hazards, and the Emergency Management Organization (EMO) has been activated frequently, what are some of your fears and/or concerns?
- What kinds of information from the EMO would you expect?

Disaster District Offices

- Maintain and support continuity of government operations
- Connection to real-world information for the EOC
- Force multiplier for emergency information
- **NOT** Incident Commander or First Responder

Prepare

Activation Level:
Normal

- Encourage C.E.R.T.
- Complete Standardized Emergency Management System (SEMS) training
- Promote community resilience
- Review & update plans

Authorize & Support Prevention, Preparedness, Mitigation, Response, and Recovery Policies

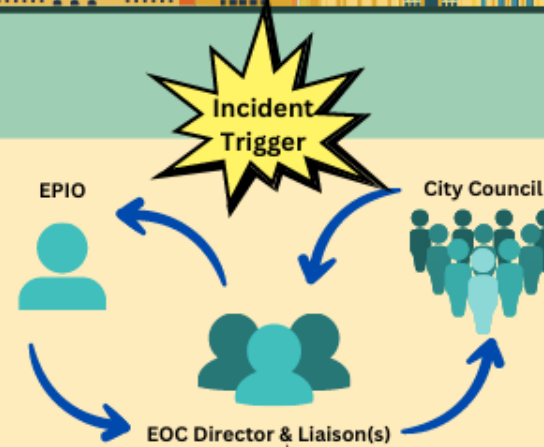


Monitor

Activation Level: 4

- Monitor the incident
- Report possible hazards and threats
- Verify information and messaging to media and constituents with EOC City Council Liaison

An incident triggers emergency notifications



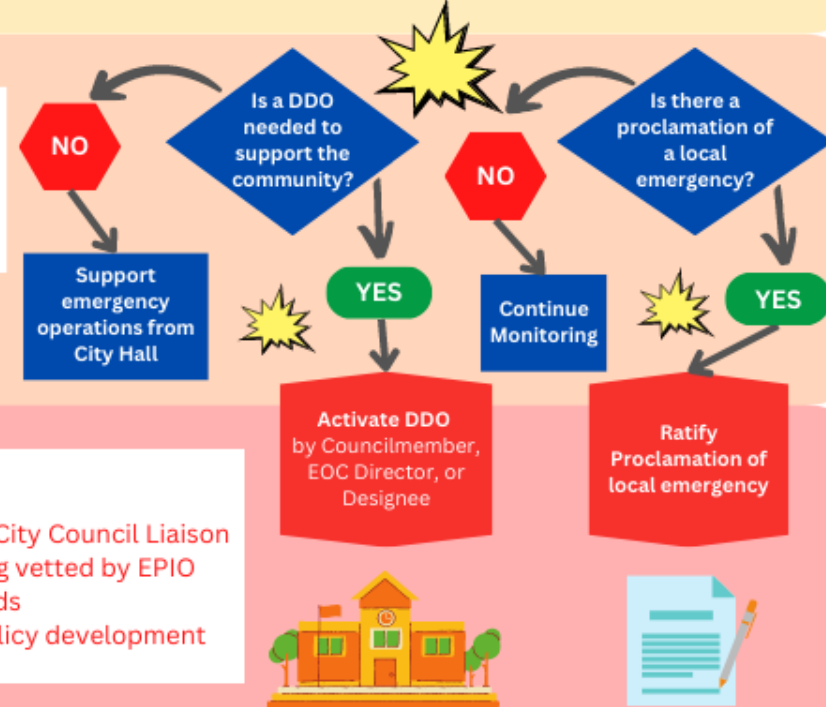
Activation Level: 3

Watch

Activation Level: 2

- Assess community impacts
- Determine if a DDO should be activated or not
- Review & ratify proclamation of a local emergency within 7 days (Ratify again every 60 days).

Emergency continues to escalate



Activate

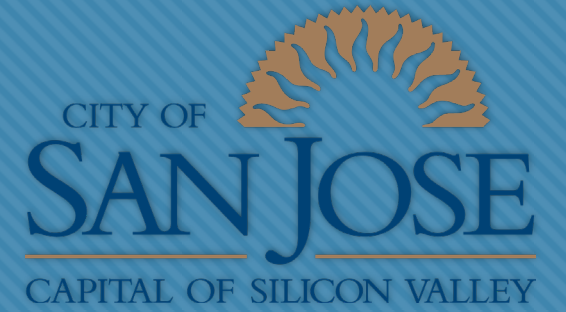
Activation Level: 1

- Open and set-up a DDO at designated location
- Establish and maintain communications with EOC City Council Liaison
- Respond to media and constituents with messaging vetted by EPIO
- Survey community and report concerns and hazards
- Review requirements for special legislation and policy development

Proclamation of Local Emergency is ratified and DDO is activated



Questions

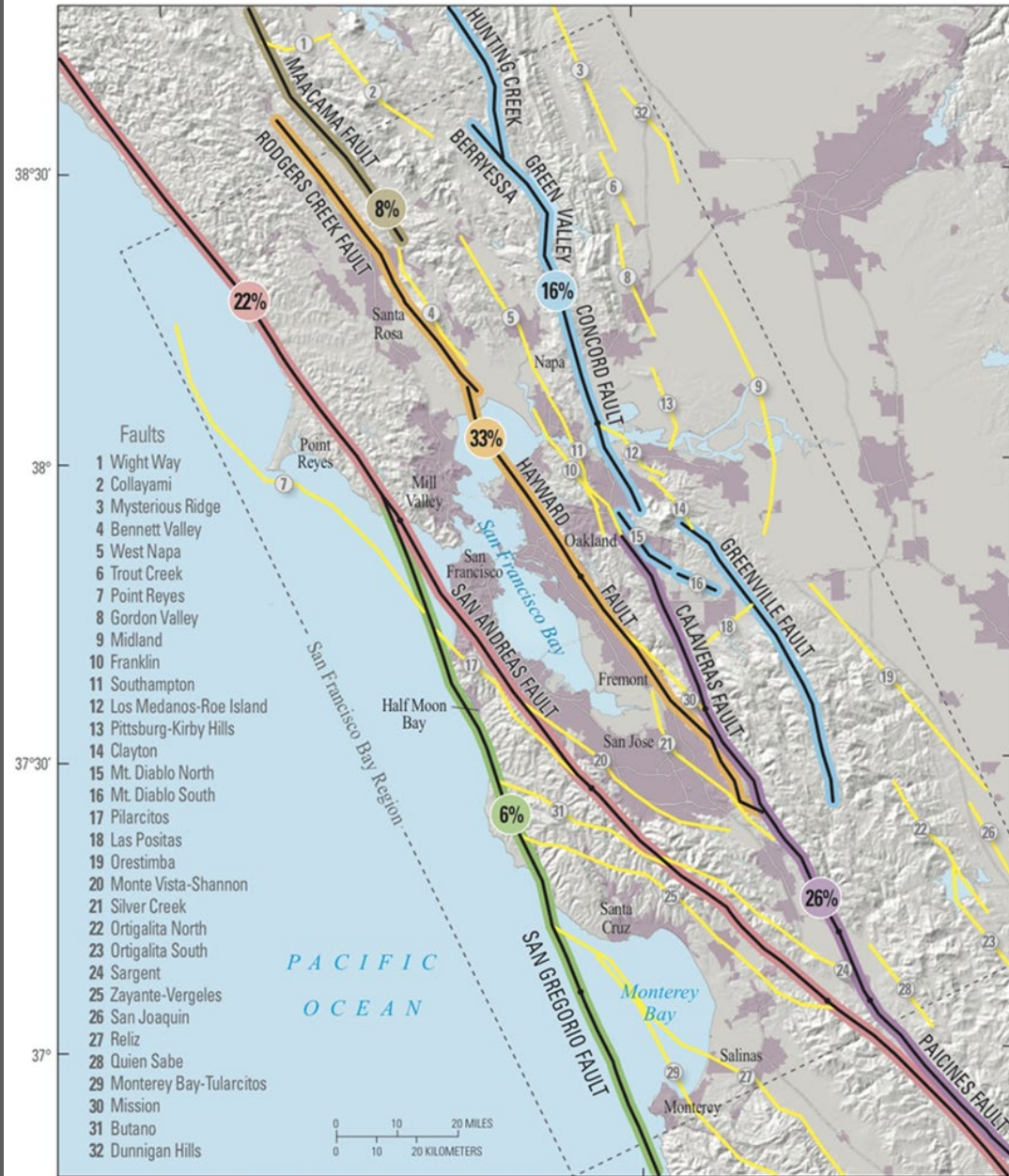


Module #2 Overview

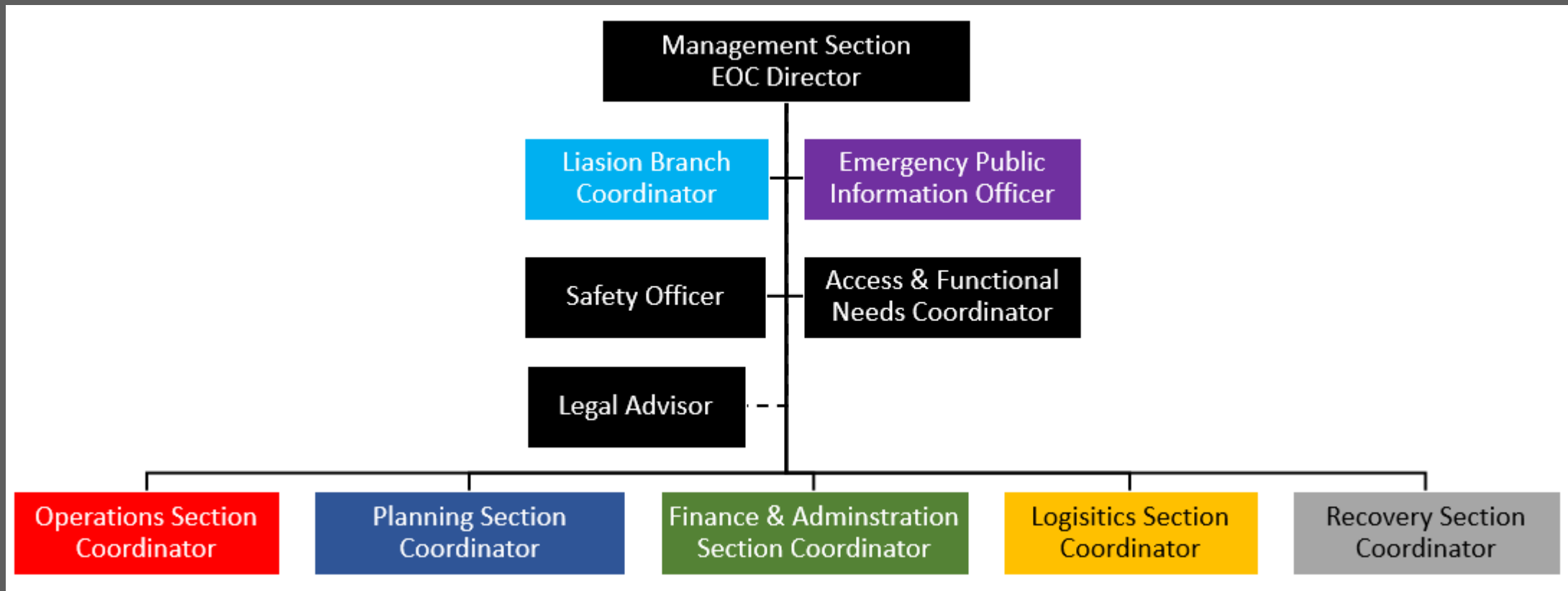
1. Overview of Continuity of Operations Plan
2. Overview of EOC Functions
3. Earthquake Scenario
4. Tabletop Exercise
5. Council Discussion
6. City Manager's Closing Remarks

Continuity of Operations Plan



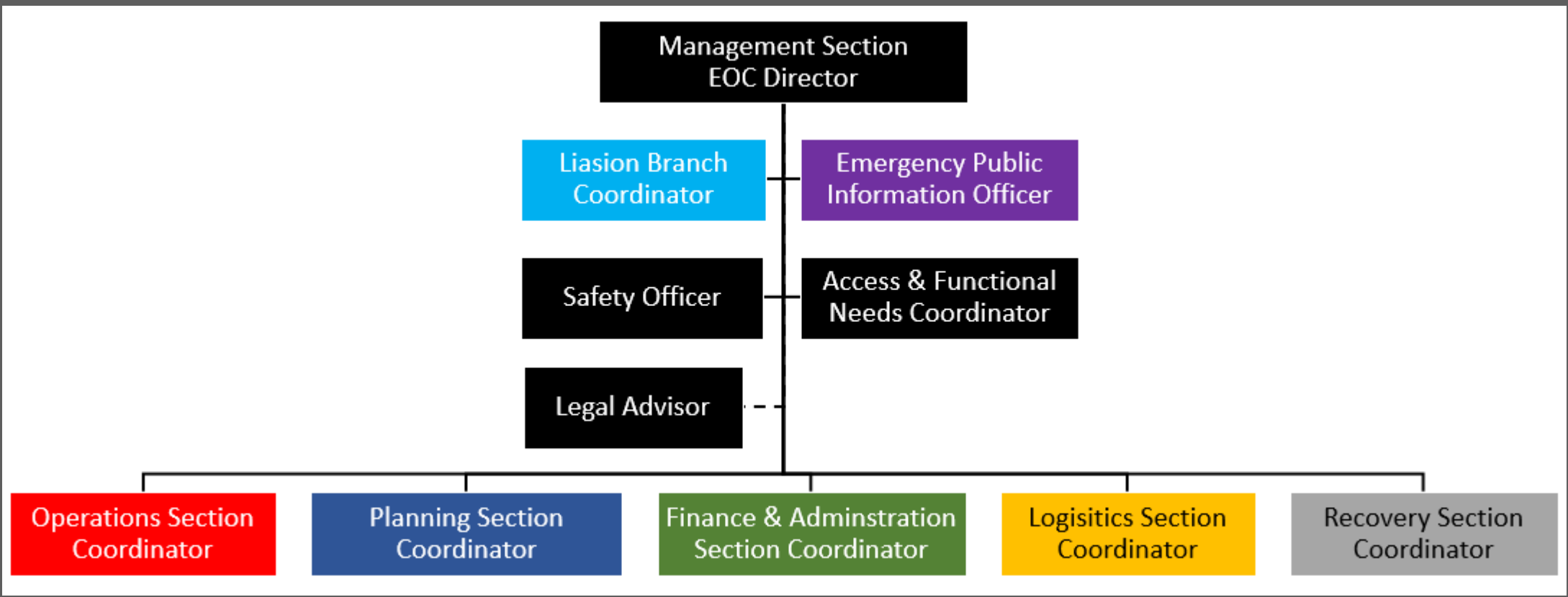


Emergency Management Organization Functions





Tabletop Exercise



Management Section

- Emergency Operations Center Director
- Emergency Public Information Branch
- Liaison Branch
- Legal Advisor
- Safety Officer
- Access and Functional Needs Coordinator

A person with long dark hair, wearing a blue safety vest with a white sign that reads "LANGUAGE ACCESS" on the back, is seated at a workstation in a control room. The workstation includes a computer monitor displaying a dashboard with the time "10:49" and various icons. Other people in blue vests are visible in the background, working at similar stations. The room is dimly lit, with the primary light source being the computer screens.

**LANGUAGE
ACCESS**

Evite Viajes Innecesarios



Evitar viajes innecesarios para permitir el acceso de vehículos de emergencia a las carreteras.

Para obtener más información, visite:
bit.ly/EarthquakeSafety



聖塔克拉拉縣露天市集和其他地點提供免費COVID-19測試。

請致電**211**或訪問sccfreetest.org/zh進行預約或獲取免費檢測點的完整列表。

需要幫助嗎?
請致電**311**或訪問sanjoseca.gov/vlac獲取免費COVID-19資源




做測試!
無需健康保險或身份證明。



FLASH REPORT #1: ATMOSPHERIC RIVER PREPARATION AND MONITORING



To read all the latest information and subscribe to the City's mailing list, visit:
bit.ly/SJStormFlashReport



Quý vị có cần thực phẩm không?





Để nhận được sự giúp đỡ, xin gọi 311 hoặc vào trang mạng sanjoseca.gov/vlac để tìm hiểu thêm.



Management Section

- Emergency Operations Center Director
- Emergency Public Information Branch
- Liaison Branch
- Legal Advisor
- Safety Officer
- Access and Functional Needs Coordinator

A person with long dark hair, wearing a blue safety vest with a white sign that reads "LANGUAGE ACCESS" on the back, is seated at a workstation in a control room. The workstation includes a computer monitor displaying a dashboard with the time "10:49" and various icons. Other people in blue vests are visible in the background, working at similar stations. The room is dimly lit, with the primary light source being the computer screens.

**LANGUAGE
ACCESS**

Operations Section



Operations Section Coordinator

Law Enforcement Branch

Fire and Rescue Branch

Transportation Branch

Public Works Branch

Damage Assessment Branch

Community Emergency Response Team

Mass Care and Shelter Branch

Housing Branch

○ Department Operations Center

- Public Works
- Transportation
- Airport
- Parks and Recreation
- Police
- Fire
- PBCE



Planning Section


- Planning Section Coordinator
- Situation Status Branch
- Action Planning Unit
- Advanced Planning Unit
- Documentation Unit



← 02-27-2025 San Jose Exe...

★ Unfavorite ...

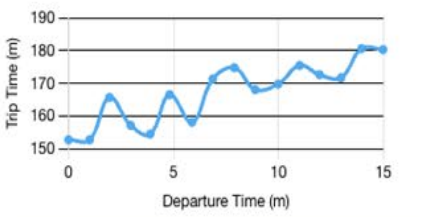
Summary Detailed Report

 The simulation is using model-generated waypoints.

Addresses evacuated
72145

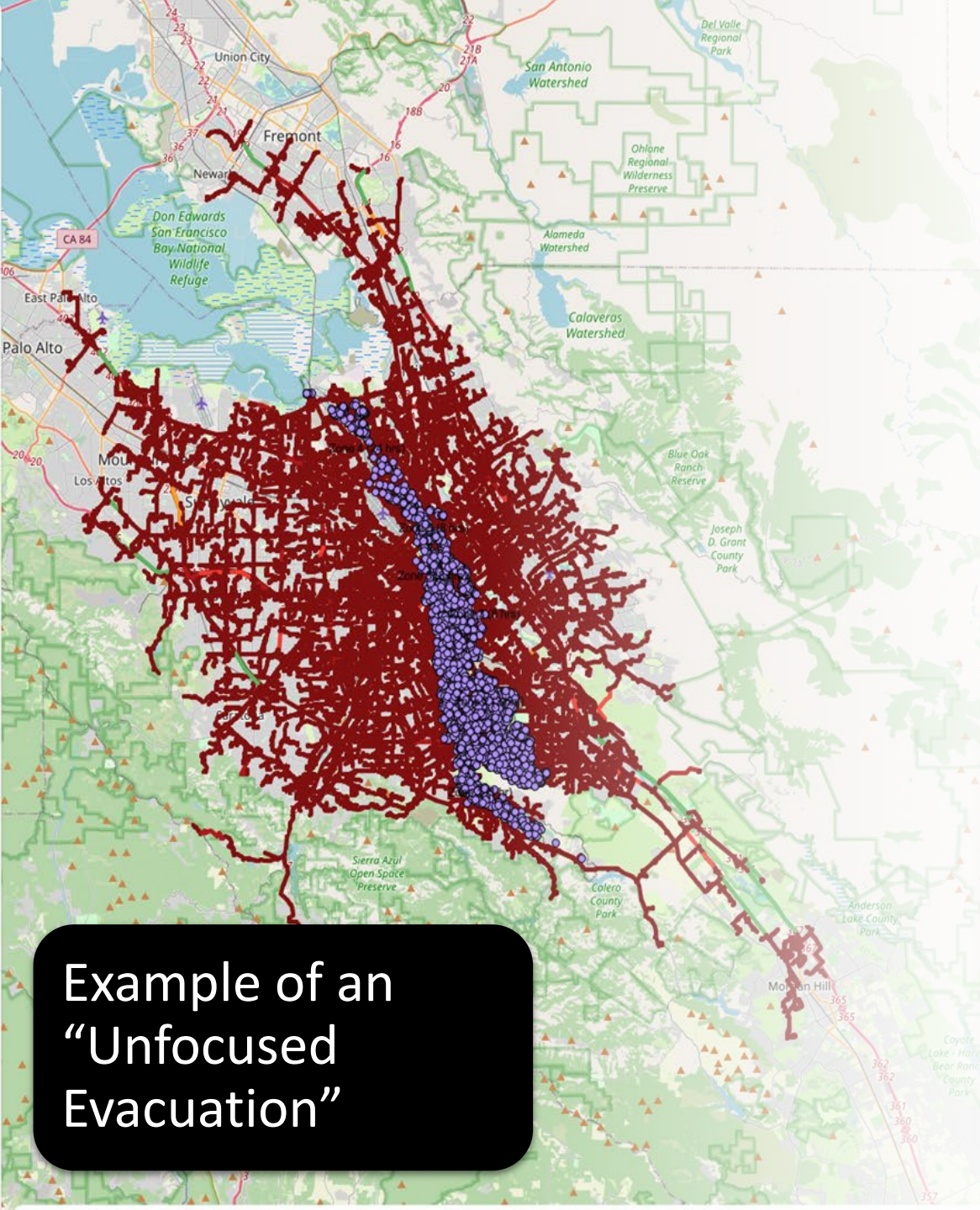
Passenger Cars **165928** Heavy Vehicles **16820**

Trip Time
6h 12m



Vehicles Departed
0

Vehicles Arrived



Example of an “Unfocused Evacuation”

Evacuation Route Planning Today

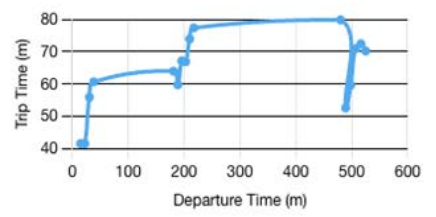
- Everyone leaves at the same time without pre-planning
- Likely worst case trip time (*time to safety*) is 6 hrs and 12 mins
- There is significant gridlock throughout the evacuation period



Addresses evacuated
66770

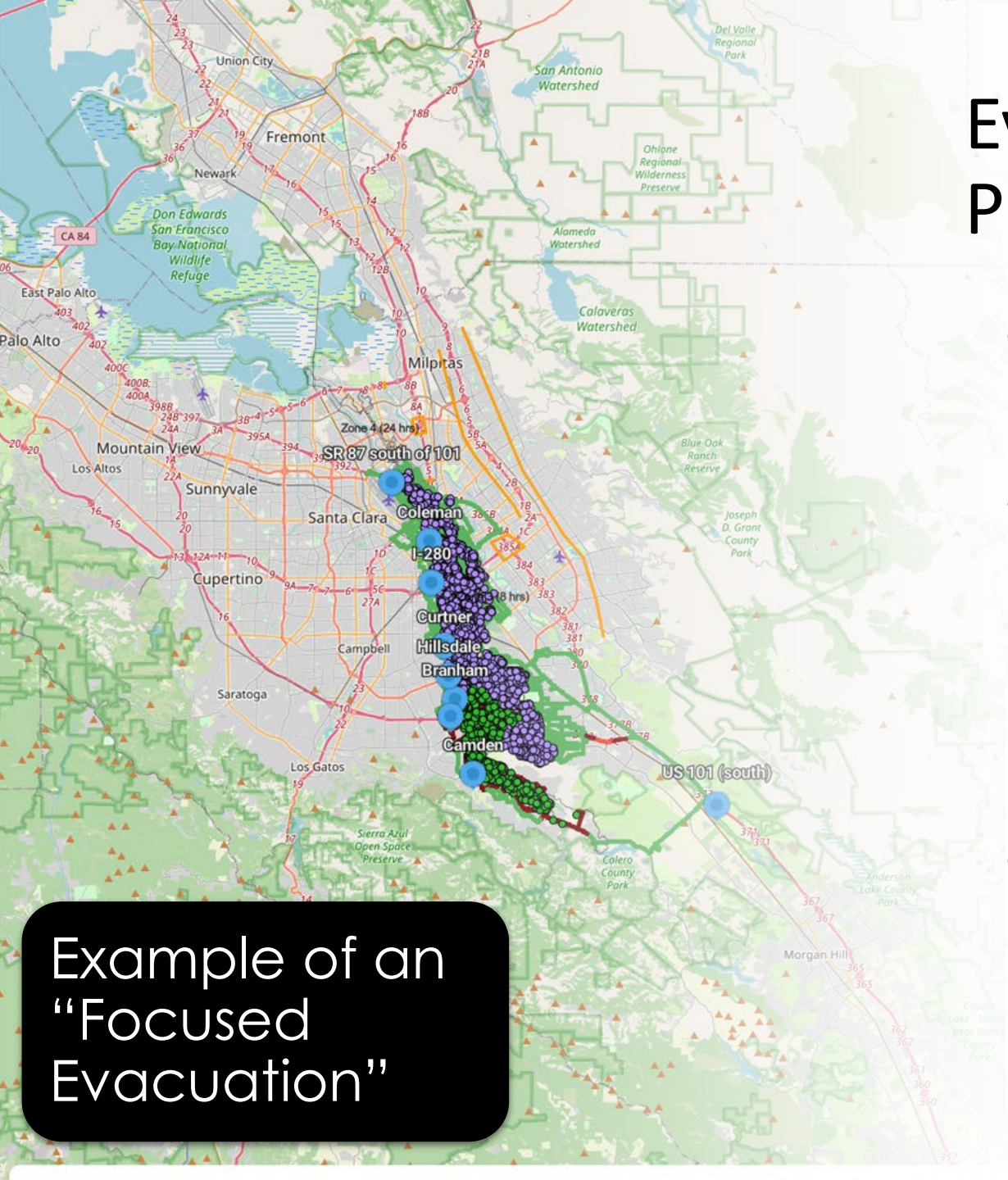
Passenger Cars **152529** Heavy Vehicles **15543**

Trip Time
3h 19m



Vehicles Departed
43024 26%

Vehicles Arrived
7952 5%



Example of an "Focused Evacuation"

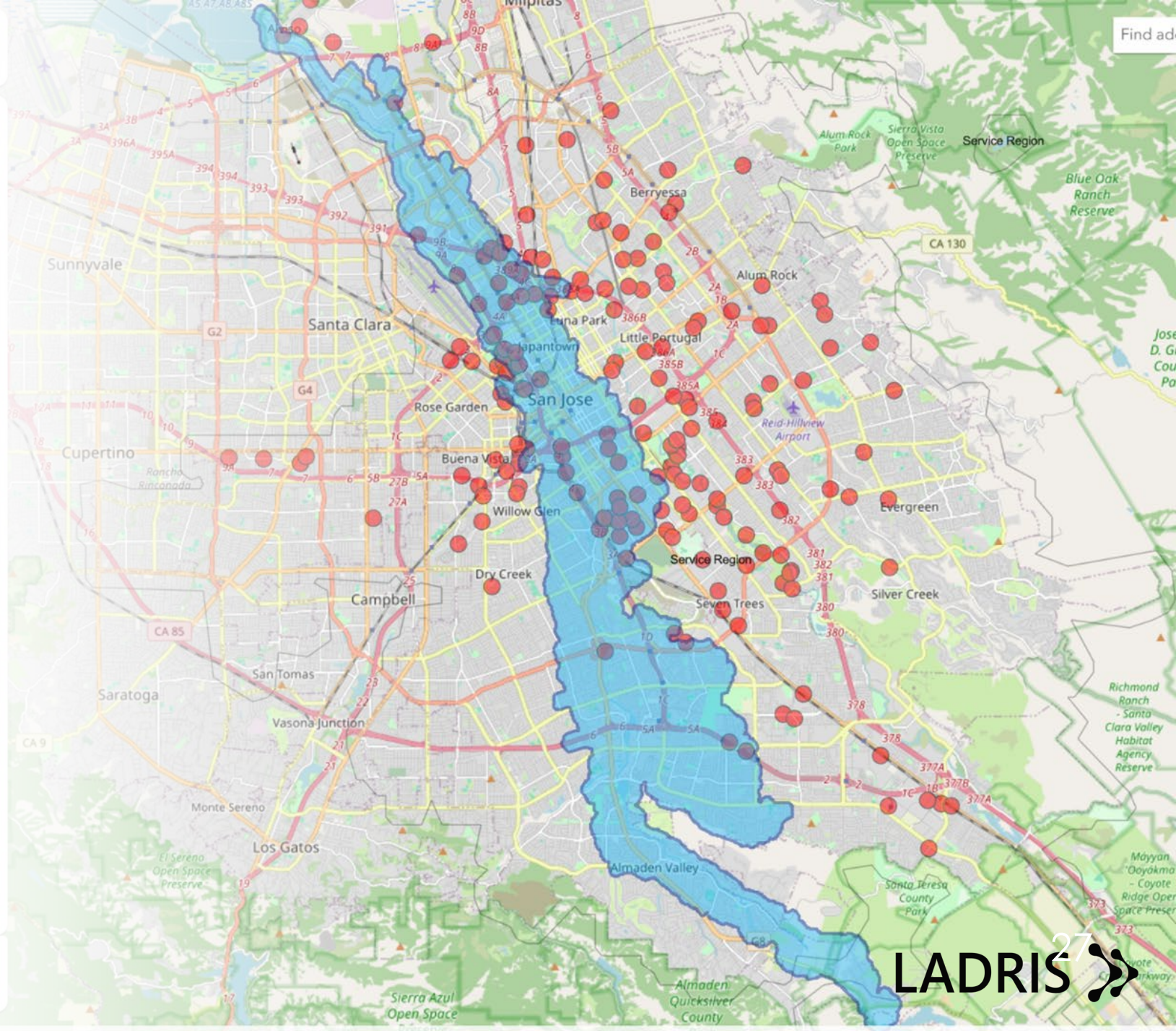
Evacuation Route Planning w/AI

- Ladriss EVAC-1, an AI tool, allows for focused evacuation planning
- Using data-driven points of safety and a staggered evacuation sequence, decreases worst case trip time (*time-to-safety*) by 50% to 3 hrs and 19 mins
- Gridlock is reduced significantly

Layering Additional Data

- Ladrís CORE product allows for additional data layers to be incorporated directly into threat zone analysis:

- Homeless Encampments
- Support Facilities
- Shelter Locations
- Real Time Traffic
- ...and more

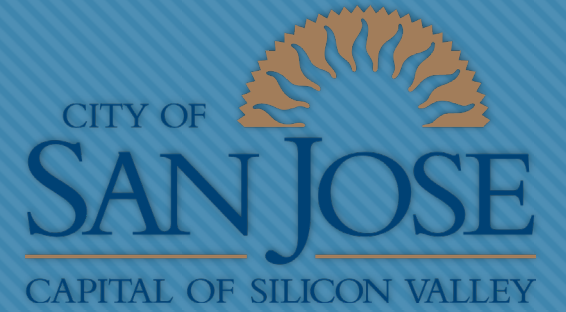


Logistics Section and Finance Section

- Logistics Section Coordinator
- Supply/Purchasing
- Facilities and Utilities
- Personnel
- Communications
 - Info Technology
 - Radio Amateur Civil Emergency Services
- Finance Section Coordinator
- Cost and Time
- Risk Management
- Procurement



Council Discussion: Q&A

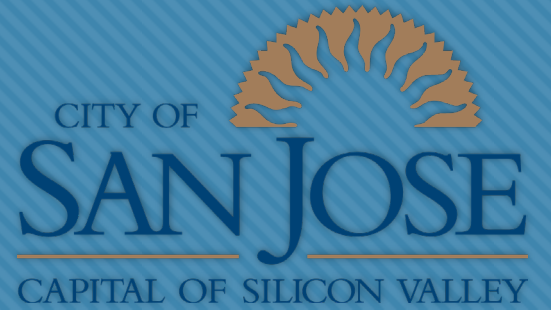


Council Discussion: Feedback

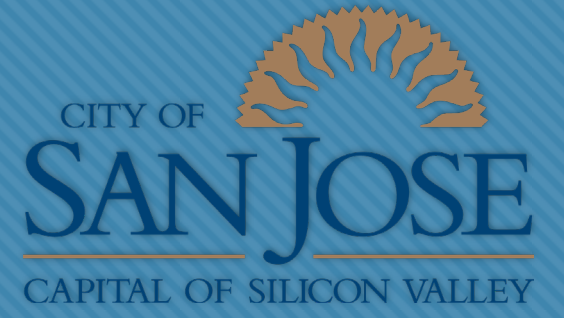


- What insight have you gained from this study session that you want us to keep in mind as we continue working on the City's emergency management efforts?
- What are some emergency management areas where we should challenge ourselves and/or improve?
- What strengths do we bring to the emergency management efforts?
- What do you need to do to be prepared as an individual and as a community leader?

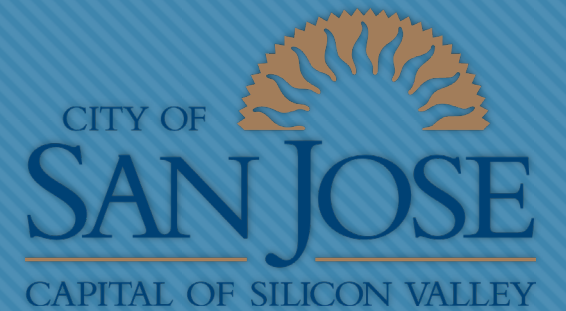
City Manager's Closing Remarks



Public Comment



Mayor's Closing Remarks



Thank You



Point of Contact for Study Session

Raymond Riordan

Director

City Manager's Office of
Emergency Management

Ray.Riordan@sanjoseca.gov

(408) 794-7055