

Clean Waterways, Healthy City:

Long-Term Trash Load Reduction Plan and Assessment Strategy

2023 Update

September 30, 2023

Updated in accordance with provision Section C.10.d of NPDES Permit No. CAS612008.



*Environmental Services*

This page intentionally left blank.

**TABLE OF CONTENTS**

<b>1.0</b>	<b>INTRODUCTION</b>	<b>4</b>
1.1	PURPOSE	4
1.2	BACKGROUND	4
1.2.1	<i>About the City</i> .....	4
1.2.2	<i>Regulatory Background</i> .....	4
1.2.3	<i>Achieving Trash Load Reduction</i> .....	5
1.3	LONG-TERM TRASH PLAN 2023 UPDATE	6
1.4	TRASH CONTROL MEASURES EFFECTIVENESS ANALYSIS	7
<b>2.0</b>	<b>TRASH CONTROL MEASURES CURRENTLY IMPLEMENTED IN THE CITY OF SAN JOSE</b>	<b>8</b>
2.1	SUMMARY DESCRIPTIONS OF EXISTING TRASH CONTROL MEASURES	9
2.2	ANTICIPATED ADDITIONAL PLANNED CONTROL MEASURES	14
<b>3.0</b>	<b>ANTICIPATED TRASH LOAD REDUCTIONS AND SCHEDULE</b>	<b>15</b>
<b>4.0</b>	<b>BASELINE TRASH GENERATION MAPS BY TRASH MANAGEMENT AREA (TMA)</b>	<b>16</b>
<b>5.0</b>	<b>TABLE OF REVISIONS MADE TO THE LONG-TERM TRASH PLAN</b>	<b>31</b>

# 1.0 INTRODUCTION

## 1.1 Purpose

The purpose of the Clean Waterways, Healthy City: Long-Term Trash Load Reduction Plan and Assessment Strategy (Long-Term Plan) is to demonstrate the City of San José's (City) commitment to attain and maintain compliance throughout the permit term for the 100% trash load reduction (TLR) by June 30, 2025 as required in Order No. R2-2022-0018, National Pollutant Discharge Elimination System (NPDES) Municipal Regional Permit No. CAS612008 (Stormwater Permit) issued by the San Francisco Bay Regional Water Quality Control Board (Water Board). This Long-Term Plan describes actions taken by the City to reduce trash loads into the City's municipal separate storm sewer system (MS4), as well as outlining future planned actions, anticipated trash load reductions, and a schedule to meet the 100% TLR requirement by June 30, 2025.

The reissued Stormwater Permit was adopted by the Water Board on May 11, 2022 and went into effect on July 1, 2022. The City is updating the Long-Term Plan in compliance with Provision C. 10.d of the new Stormwater Permit.

The City reserves the right to update the plan and future control measures described based on its own discretion.

## 1.2 Background

### 1.2.1 About the City

The City of San José is the 3<sup>rd</sup> largest city in California and the 12th largest city in the United States. San José covers approximately 180 square miles with over 150 linear miles of creeks and waterways. The City's MS4 includes over 35,000 public storm drains and over 1,100 miles of storm sewer lines that drain to over 1,700 outfalls that discharge into 47 different creeks in 5 major watersheds.

### 1.2.2 Regulatory Background

The first Municipal Regional Stormwater Permit, Order No. R2-2009-0074, NPDES Permit No. CAS612008, effective December 1, 2009, included specific requirements for trash management:

- Develop assessment methodology and determine baseline trash load from MS4;
- Develop and submit a Short-Term Trash Load Reduction Plan by February 2012;
- 40% reduction in trash loads by 2014;
- 70% reduction in trash loads by 2017;
- 100% reduction in trash loads by 2022;
- Install Full Trash Capture devices in an area equivalent to 30% of retail/wholesale land by 2014;
- Identify and maintain 1 creek trash hot spot per 30,000 of population (32 hotspots for San José);
- Develop and submit Long-Term Trash Load Reduction Plan by February 2014

The Second Municipal Regional Stormwater Permit, Order No. R2-2015-0049, NPDES Permit No. CAS612008, effective January 1, 2016, built upon and modified previous trash load reduction and management requirements. It also introduced the formula used to calculate trash load reduction percentages:

- 60% reduction in trash loads by 2016;
- 70% reduction in trash loads by 2017;
- 80% reduction in trash loads by 2019;
- Develop and implement Receiving Water Monitoring protocols, designed to determine the effectiveness of trash control actions at prevented trash within the City's jurisdiction from discharging into receiving water(s);
- Option to claim up to 15% offset credit by developing and implementing an approved Direct Discharge Trash Control Plan;
- Option to claim up to 10% offset credit by implementing additional creek and shoreline cleanups;
- Revise and submit updated Long-Term Plan if 60% reduction target not met.

The third Municipal Regional Stormwater Permit, Order No. R2-2022-0018, NPDES Permit No. CAS612008, effective July 1, 2022, again built upon and modified previous trash load reduction and management requirements. It also modified the formula used to calculate trash load reduction percentages:

- 90% reduction in trash loads by 2023;
- 100% reduction in trash loads by 2025;
- Submit updated Long-Term Plan by September 30, 2023 if 90% reduction cannot be met without utilizing offset credits;
- Phasing out credits obtained from previously-implemented jurisdictional source controls (e.g.: single-use plastic bag and expanded polystyrene foodware bans) after June 2022;
- Phasing out offset credits obtained from Direct Discharge Trash Control Plans and Additional Creek and Shoreline cleanups after June 2025

The City submitted its initial Long-Term Plan on January 15, 2014 and its Updated Long-Term Plan Supplemental on September 30, 2016. The City met the 2023 90% reduction mandate utilizing offset credits from its additional creek and shoreline cleanups and Direct Discharge Trash Control Program, and this 2023 Update on September 30, 2022 in compliance with MRP requirements.

### **1.2.3 Achieving Trash Load Reduction**

As of July 1, 2023, the City attained 95.6% trash load reduction through structural full trash capture systems installed in the MS4 and on-land trash control measures detailed in Section 2, in combination with offsets and credits achieved through additional creek and shoreline cleanups, the Direct Discharge Trash Control Program, and jurisdictional source controls. These programs are implemented by the City's Departments of Public Works; Parks, Recreation, and Neighborhood Services; Transportation; Planning, Building, and Code Enforcement; and Environmental Services. The City has achieved all mandatory trash load reduction deadlines required by the MRPs to date through

significant investment of time and resources, interagency collaborations, and fostering partnerships with non-profit partners.

Table 1. TLR Compliance:

Trash Control Measure	FY 22-23	FY 21-22	FY 20-21	FY 19-20	FY 18-19	FY 17-18	FY 16-17	FY 15-16	FY 14-15	FY 13-14
Full Trash Capture Systems	54.1%	51.70%	49.60%	49.60%	46.20%	38.90%	36.00%	16.50%	8%	7%
On-land Trash Control Measures	16.5%	16.70%	15.60%	14.80%	15.60%	14.40%	8.20%	1.80%	2%	7%
Subtotal	<b>70.6%</b>	<b>68.40%</b>	<b>65.20%</b>	<b>64.40%</b>	<b>61.80%</b>	<b>53.30%</b>	<b>44.20%</b>	<b>18.30%</b>	<b>10.00%</b>	<b>14.00%</b>
Jurisdictional Source Controls	0%*	10%	10%	10%	10%	10%	10%	10%	14%	10%
Creek and Shoreline Cleanups	10%	10%	10%	10%	10%	10%	10%	10%	51%	37%
Direct Discharge Trash Control Plan	15%	15%	15%	15%	15%	15%	15%	15%	N/A	N/A
Total	<b>95.6%</b>	<b>103.40%</b>	<b>100.20%</b>	<b>99.40%</b>	<b>96.80%</b>	<b>88.30%</b>	<b>79.20%</b>	<b>53.30%</b>	<b>77%</b>	<b>62%</b>
Claimed	<b>95.6%</b>	<b>103.40%</b>	<b>100.20%</b>	<b>99.40%</b>	<b>96.80%</b>	<b>88.30%</b>	<b>79.20%</b>	<b>53.30%</b>	<b>77%</b>	<b>40%</b>
Target	<b>90%</b>				<b>80%</b>		<b>70%</b>	<b>60%**</b>		<b>40%</b>

\* MRP 3.0 phased our TLR credits from previously-enacted jurisdictional source controls

\*\* FY 15-16's 60% target was not mandatory. Permittees unable to achieve it were required to submit a detailed plan and schedule of implementation of additional trash load reduction control actions that will attain the 2017 mandatory deadline.

Percentage trash load reduction is calculated utilizing the most recent formula detailed in Provision C.10.b.iv of MRP 3.0. This calculation is based on area, trash generation levels from the 2009 baseline, and trash generation levels observed each fiscal year. The calculation is weighted to give a higher percentage for improvements made in Moderate areas, and significantly higher percentages for improvements made in High and Very High areas.

San José's calculated trash reduction thus far is conservative based on the regional Trash Load Reduction Tracking methodology utilized by Stormwater Permit permittees throughout the Bay Area. The City has made every effort to diligently apply the regional trash reduction tracking methodology in a way that is both fair and accurate, claiming documented reductions based on the tracking methodology's formula and crediting process.

### 1.3 Long-Term Trash Plan 2023 Update

This updated Long-Term Plan describes TLR actions currently being implemented and planned for implementation to achieve the TLR benchmarks required in MRP 3.0. Anticipated implementation schedules for planned control actions that are sufficient to achieve compliance with the 90% TLR benchmark within a reasonable timeframe, and the 100% compliance benchmark by June 30, 2025, are also included in this updated Long-Term Plan. The trash assessment strategy described in the City of San José 2014 Long-Term Plan remains in effect. Any modifications to the strategy will be documented in the City's stormwater annual reports.

During the development of its original 2014 Long-Term Plan, trash generating areas within the City were subdivided into 50 Trash Management Areas (TMAs) based on trash control measures implemented per the City's original Long-Term Plan. Trash control measure implementation evolved over the years, so in Fiscal Year 16-17 under MRP 2.0, the City reconfigured and consolidated its Trash Management Areas by geography. The number of TMAs was reduced from 50 to 13, with twelve of the TMAs defined by geography and only TMA 1 defined by installed full trash capture systems. Please see the TMA maps attached at the end of this plan. See Section 5 for a summary of major revisions made to the City's Long-Term Plan since its inception.

## **1.4 Trash Control Measures Effectiveness Analysis**

OVTAs are conducted to assess environmental outcomes of control measures other than full trash capture. They provide a qualitative estimate of the amount of trash generated on specific street segments, sidewalks and adjacent land areas that may be transported to a municipal stormwater system and ultimately to waterways. OVTAs are conducted by SCVURPPP staff according to guidelines in Provision C.10.b.ii.b using the standard protocol developed and used by Bay Area-wide Permittees during the first MRP term.

City staff use OVTA data to identify areas that are not achieving a low trash generation score (i.e., < 5 gallons/acre/yr) and the sources of trash in said area. OVTA data gathered over the past decade show that the majority of the City's acreage not treated by full trash capture is low trash generating. As of July 1, 2023, the City has approximately 76,000 acres in the low category, 8,300 acres in the moderate category, 1,500 acres in the high category, and 24 acres in the very high category. Untreated acreage that is high or very high trash generating are potential focus areas for future City efforts. City staff will continue to analyze OVTA data to ascertain where trash control measures such as those listed in Section 2.1 can be enhanced, expanded, or modified to decrease the level of trash on streets and sidewalks in San José and reduce what gets into the MS4 and discharged to waterways.

## 2.0 TRASH CONTROL MEASURES CURRENTLY IMPLEMENTED IN THE CITY OF SAN JOSE

Since the initial trash load reduction requirements were adopted by the Regional Water Board in MRP 1.0, the City has implemented a number of trash control measures to address trash load reduction benchmarks. These control measures have aided the City in significantly reducing the generation of trash in TMAs and/or the levels of trash discharged from its MS4 and maintain compliance with the MRP. Trash control measures are summarized in annual compliance reports submitted to the Regional Water Board by the City and are again summarized in this section. See maps for each TMA.

Table 2. Summary of trash control measures implemented in TMAs:

Trash Control Measures	Trash Management Area												
	1	2	3	4	5	6	7	8	9	10	11	12	13
Full Trash Capture Systems	X												
Creek and Shoreline Cleanups		X	X	X			X		X		X		
Free Junk Pickup		X	X	X	X	X	X	X	X	X	X	X	X
Waste Management For Your Special Event***													
Jurisdictional Source Controls		X	X	X	X	X	X	X	X	X	X	X	X
Industrial and Commercial Inspections		X	X	X	X	X	X	X	X	X	X	X	X
Private Land Drainage Program**													
Integrated Waste Management Enforcement Team		X	X	X	X	X	X	X	X	X	X	X	X
Public Litter Cans		X	X	X	X	X	X	X	X	X	X	X	X
Community Engagement/Public Education***													
Encampment Management Program		X	X	X	X	X	X	X	X	X	X	X	X
Downtown San José Property-Based Improvement District		X					X						
Adopt-A-Park		X	X	X	X	X	X	X	X	X	X	X	X
Neighborhood Litter Program		X	X	X	X	X	X	X	X	X	X	X	X
Business Intelligence Data Tracking System		X	X	X	X	X	X	X	X	X	X	X	X
RAPID - Removing and Preventing Illegal Dumping Team		X	X	X	X	X	X	X	X	X	X	X	X
Neighborhood Beautification Program - Dumpster Day***													
Street Sweeping		X	X	X	X	X	X	X	X	X	X	X	X
Litter Enforcement*		X	X	X	X	X	X	X	X	X	X	X	X

\* Not previously reported in Stormwater Annual Reports

\*\* New program per MRP 3.0 requirements

\*\*\* Control measure is conducted throughout the City, and location efforts/needs change each fiscal year



## **2.1 Summary Descriptions of Existing Trash Control Measures**

### **FULL TRASH CAPTURE SYSTEMS**

The City of San José has installed a total of 29 high-flow capacity Full Trash Capture (FTC) stormwater treatment systems consisting of 34 individual Hydrodynamic Separator (HDS) types of FTC systems, 107 Connector Pipe Screens (CPS) and 88 bioretention treatment systems to date. Collectively, these systems treat 14,111 acres, exceeding the Permit requirement of 895 acres. Per C.10.b.i, the City claims 54% trash load reduction for full trash capture systems. The funding source for design and installation is a combination of City and CalTrans monies, with operation and maintenance funded by the Storm Sewer Operating Fund.

City Department Lead(s): Public Works Department, Department of Transportation

### **CREEK AND SHORELINE CLEANUPS**

The City of San José continues partnerships to conduct creek cleanups. Clean Creeks, Healthy Watersheds (CCHW) is an integrated, multi-disciplinary, four-year (2021-2025) EPA funded grant project to address trash in Coyote Creek, Guadalupe River, and Los Gatos Creek. The efforts funded by the grant seeks to improve water quality in the Coyote and Guadalupe Watershed through a strategic partnership of government and non-profit entities with a shared interest in addressing trash and homelessness. Grant deliverables include trash cleanup, prevention, and community outreach within Los Gatos Creek, Guadalupe River, and Coyote Creek. With support from its partners, the City expands efforts to prevent homeless encampment impacts.

In addition, through a Memorandum of Agreement, the City has partnered with Santa Clara Valley Water District (Valley Water) to annually remove trash rafts along Coyote Creek and Guadalupe River. Through collaborative agreement trash rafts are equally balanced and removed between Valley Water and City property. Through June 30, 2025, the City will continue to claim the 10% trash load reduction offset for these efforts.

City Department Lead(s): Environmental Services Department

### **RESIDENTIAL JUNK PICKUP**

The Residential Garbage and Recycling Junk Pickup program aims to address blight in San José and to empower the community to aesthetically demonstrate pride in their city. San José residents from single family homes and multi-family homes can use the program to schedule unlimited appointments at no additional cost to have large items (such as mattresses, sofas, refrigerators, and tires) picked up by their recycling collection company. Contacting San José 311 through the call center, website, mobile app, or calling their recycling hauler directly, residents can file and track a large item pick up request. The program tracks the total tons of large items picked up, and customer service metrics from a bi-annual survey. The funding source is ongoing from residential garbage and recycling rate payer funds since FY 15-16.

City Department Lead(s): Environmental Services Department

**WASTE MANAGEMENT FOR YOUR SPECIAL EVENT**

The City of San José provides free dumpster service for public events on public property with at least 2,000 daily attendees and ensures all waste is sorted to recover organics and recyclables. The program tracks total tons of waste collected annually. The funding source is ongoing from the California Redemption Value since FY 06-07.

City Department Lead(s): Environmental Services Department

**JURISDICTIONAL SOURCE CONTROLS**

The City of San José continues to implement and assess the EPS Foam Food Container Ordinance that became effective for all food service establishments January 1, 2015, and the Single-Use Carryout Bag Ban ordinance that became effective January 1, 2012. Creek and river litter surveys have shown a 69% reduction in the number of bags found in storm drain inlets and a 78% reduction in the number of bags found in creeks. The City estimates an approximate 73% reduction in the amount of EPS foam food service ware in stormwater. The funding source was General funded in previous years; it will be funded from commercial and residential garbage and recycling rate payer funds starting FY 23-24.

In addition to the local ordinances mentioned above, the City is providing outreach and education about California's single-use foodware accessories and condiments bill, AB 1276, effective January 1, 2022. It applies to food facilities such as restaurants, coffee shops and mobile food vendors and limits the amount of single-use foodware accessories – such as plastic utensils, chopsticks and coffee sticks – and condiment packets that end up in landfills or pollute San José waterways. AB 1276 adds another layer of environmental protection to AB 1884, the state's existing “straws-upon-request” law, which went into effect in 2018.

City Department Lead(s): Environmental Services Department

**INDUSTRIAL AND COMMERCIAL INSPECTIONS**

The City of San José Business Inspection program is designed to direct inspector resources toward facilities with a higher potential to contribute pollutants to stormwater. This prioritization considers the type of business and the compliance history of a facility in establishing inspection frequency. The program includes more than 7,700 businesses in its inspection inventory. The program tracks inspection dates, business type (Standard Industrial Classification [SIC]), compliance history, and educational material distribution such as Best Management Practices. Program performance is measured by percent of stormwater violations identified at industrial/commercial facilities resolved within ten business days. The funding source is ongoing since 2001 from the Storm Sewer Operating Fund.

City Department Lead(s): Environmental Services Department

**INTEGRATED WASTE MANAGEMENT ENFORCEMENT TEAM**

The City of San José's Integrated Waste Management Enforcement Team engages with residents and businesses to educate and enforce on solid waste management issues including weekly hauling requirements, service levels, authorized hauling, dangerous

accumulation, set out of containers/material for pickup, City programs (e.g. Junk Pickup), and new solid waste regulations. Complaints are received from the public, solid waste haulers, city-staff, or self-discoveries in the field by Environmental Inspectors. Repeated violations result in the issuance of Administrative Citations. The funding source is from commercial and residential garbage and recycling rate payers.

City Department Lead(s): Environmental Services Department

### **PUBLIC LITTER CANS**

The City of San José currently has over 1,300 public litter cans (PLCs) in service. Locations of additional PLCs are determined through comparison of trash generation rates and land use, as well as pedestrian and vehicle traffic. The majority of PLCs were installed in business districts, areas with high and moderate trash generation. New PLC requests from the public can be submitted for review through the PLC Service Request Form. The funding source is from commercial garbage and recycling rate payer funds.

City Department Lead(s): Environmental Services Department

### **PUBLIC LITTER CANS in Parks**

The City of San Jose maintains over 1,800 PLCs throughout the City's parks system. PLCs are placed near picnic tables, restrooms, playgrounds and on central trail locations for ease of use. Community members can make requests for new or more PLCs either directly to staff in the Park Districts, or through the Park Concerns line. The funding source is ongoing from the General fund.

City Department Lead(s): Parks, Recreation, and Neighborhood Services

### **COMMUNITY ENGAGEMENT/PUBLIC EDUCATION**

The City of San José takes a strategic approach to event selection based on family-friendly community events, TMA's, targeted audience, and collaborative campaign efforts. The City aims to deliver stormwater pollution prevention messages to diverse audiences by using a variety of outreach materials, including multilingual (English, Spanish, Vietnamese) literature and information to its diverse population, and giveaways that are available in the City's outreach tool kit, which cover subjects such as pesticide use impacts on stormwater, reusable bags, household hazardous waste disposal, seed packets, and path of stormwater. The City collaborates with other local and regional agencies and community organizations to reach residents of all ages and interests. The funding source is from the Storm Sewer Operating Fund.

City Department Lead(s): Environmental Services Department

### **ENCAMPMENT MANAGEMENT PROGRAM**

The City of San José provides a minimum of weekly trash collection services to approximately 150 encampment locations. This program distributes and collects litter bags at encampment sites; picks up trash from those residing in vehicles; removes large trash/debris piles at encampments; and appropriately disposes of items soiled with human waste to reduce contamination. Additionally, the City provides escalated cleanup actions at encampments that have a substantial amount of trash and debris

to improve the sanitation of surrounding areas. Encampments that have a larger footprint, greater than 12'x12', are subject to increased cleanup actions which may include abatement of the site. The City continues to refine best management practices for trash collection services at encampments to both increase services and reduce discharges to minimize impacts from encampments to the MS4.

City Department Lead(s): Parks, Recreation, and Neighborhood Services

#### **DOWNTOWN SAN JOSE PROPERTY-BASED IMPROVEMENT DISTRICT (PBID)**

The PBID Groundwerx cleaning program provides sidewalk sweeping, power washing, litter and debris pickup, and maintenance of public litter cans within the PBID boundaries. Since implementation, the cleaning program has increased their services from weekly to daily as demand increased. To align with County of Santa Clara public health orders due to the COVID-19 pandemic, support for the City's Al Fresco expanded to include the daily deployment of four mobile hand sanitizer dispensers and daily monitoring of public litter can usage in the areas with high concentrations of restaurants operating outside. The Al Fresco program waives City permits and fees to allow restaurants and other businesses that comply with public health orders to operate outside seating and service for customers. Local businesses within the Downtown area pay for these programs.

City Department Lead(s): Office of Economic Development

#### **ADOPT-A-PARK**

Park adoption is a long-term volunteer opportunity for neighborhood associations and passionate residents. The program recruits and trains environmentally conscious residents and corporate entities to help enhance the overall safety and quality of City parks and trails. This program provides equitable engagements with Community Day events throughout the City of San José. Participants assist in the general care and maintenance of neighborhood and regional parks, and open spaces in San José. Tasks include removing litter and invasive plants, sweeping, raking, trimming, cleaning, and removing dangerous debris. As of FY 22-23, 90 parks have been adopted. This program is funded by the General fund.

City Department Lead(s): Parks, Recreation, and Neighborhood Services

#### **NEIGHBORHOOD LITTER PROGRAM**

The Neighborhood Litter Program, formerly called the Anti-Litter Program, provides support for litter cleanups throughout the City of San José by increasing community engagement and coordinating with neighborhoods, partners, and businesses to address issues of blight. The program is primarily volunteer-based, and volunteers report back on the location of their cleanup, the number of bags collected, and the number of hours spent at a site. In addition, the program partners with outside agencies, such as Santa Clara Valley Water District, in one-time service projects such as Coastal Cleanup Day; Caltrans to coordinate trash removal from on/off ramps; and the Valley Transportation Authority to co-coordinate litter pickups in areas most impacted by trash.

The City provides supplies, tools, and trash disposal for these volunteer efforts. The funding source is ongoing from the City's General Fund.

City Department Lead(s): Parks, Recreation, and Neighborhood Services

#### **BUSINESS INTELLIGENCE DATA TRACKING SYSTEM**

The City uses Infor, a maintenance management software, to collect data related to the maintenance activities across all park districts. One of the maintenance activities being tracked is 'Garbage/ Litter Maintenance'. Data on the number of materials and labor involved with this activity is analyzed to better inform management of trash reduction.

City Department Lead(s): Parks, Recreation, and Neighborhood Services

#### **REMOVING AND PREVENTING ILLEGAL DUMPING (RAPID) TEAM**

The RAPID Program addresses illegally dumped items throughout the City of San José. The team responds to alerts of illegal dumping and performs proactive monitoring to remove trash and debris to keep our streets clean and safe. Materials collected will be reported in tons. Their mission is to help keep the streets of our City clean to improve the quality of life for our residents. The funding source is ongoing from the City's General Fund.

City Department Lead(s): Parks, Recreation, and Neighborhood Services

#### **NEIGHBORHOOD BEAUTIFICATION PROGRAM**

The Neighborhood Beautification Program (NBP), formally known as the Dumpster Day Program, aims to provide San José residents with an alternative to disposing their unwanted household items by providing dumpsters to residents through pre-planned neighborhood events. The goal is to prevent items from being placed out on the curb or dumped illegally. Materials collected are reported in tons. The funding source is ongoing from the City's General Fund.

City Department Lead(s): Parks, Recreation, and Neighborhood Services

#### **STREET SWEEPING**

The City manages street sweeping of arterial and connector streets, bikeways and business districts to support the City's goal of preventing pollutants including trash and heavy metals in sediment from entering the MS4. Residential streets are swept by a contractor once a month and other areas are swept more frequently. In FY 19-20 DOT began evaluating street sweeping alterations needed to accommodate the new protected bike lanes. In FY 20-21, this evaluation continued. The funding source is from the Storm Sewer Operating Fund.

City Department Lead(s): Department of Transportation

#### **LITTER ENFORCEMENT**

The City of San José Planning, Building, and Code Enforcement Department enforces the provision of the community preservation code (Title 17.72), specifically 17.72.545, which prohibits the accumulation of visible solid waste, prohibits the storage of solid

waste that would allow it to be transported by wind or otherwise onto any street or neighboring property, and prohibits the visible accumulation of litter and debris in vestibules or doorways of buildings. Enforcement of violations of this provision is usually complaint based, limited to private property, funded depending on where the violation occurred, and either assigned to the Multiple Housing program which is fee-funded, or the General Code program which is General Funded.

City Department Lead(s): Department of Planning, Building, and Code Enforcement

## **2.2 Anticipated Additional Planned Control Measures**

In addition to the ongoing implementation of existing trash control actions summarized in section 2.1, the City of San José anticipates implementing the control actions summarized in this section to achieve the 90% and 100% trash load reduction benchmarks. Anticipated schedules for implementing these actions are also included.

### **FULL TRASH CAPTURE SYSTEMS/DEVICES**

The City of San José is coordinating with CalTrans to install 4 Hydrodynamic Separator systems in FY 23-24, and an additional 5 Hydrodynamic Separators systems the following fiscal years in partnership with CalTrans.

The City also plans to convert 5.2 acres of existing flood control basin to provide stormwater treatment via bioretention prior to discharge to the Guadalupe River in North San José between Riverview Parkway and the Guadalupe River. This River Oaks project will collect stormwater runoff from 344-acres of multi-family residential, parks, commercial, and light industrial area, and intercept trash that flows through the stormwater treatment system.

City Department Lead(s): Public Works, Department of Transportation

### **TRASH INSPECTION PROGRAM ON PRIVATE LAND DRAINAGE AREAS (PLDA)**

As described in MRP 3.0 Provision C.10.a.ii(b), private properties that 1) generate moderate, high, or very high level of trash, 2) are plumbed to the City of San José's MS4, and 3) are not already addressed by a FTC system/device are required to install and maintain a FTC system/device or be managed by trash discharge control actions equivalent to or better than a FTC system/device by July 1, 2025. To address trash contributions from these properties, which are referred to as Private Land Drainage Areas (PLDAs), the City began implementation of a PLDA Trash Assessment Program in FY 22-23. Through the Trash Assessment Program, PLDAs will be assessed utilizing the standard OVTA protocols. PLDA sites with observed trash levels on the property greater than low trash generation, property owners and/or managers will be required to implement additional trash control measures, up to and including installation of FTC, to achieve low trash generation. The goal of the PLDA Trash Assessment Program is to address trash from all PLDAs by July 1, 2025. Additional details on the PLDA Trash Assessment Program will be provided in the City's annual reports.

City Department Lead(s): Environmental Services Department

### 3.0 ANTICIPATED TRASH LOAD REDUCTIONS AND SCHEDULE

The implementation of trash control actions described in Section 2.1 has resulted in a greater than 95% reduction of trash generation observed in TMAs and/or discharged from the City's MS4. Trash load reductions achieved to date are reported by the City via annual compliance reports submitted to the Regional Water Board. Methods used to calculate trash load reductions are described in MRP Provision C.10. Table 2 below provides a summary of the load reductions achieved to date (through June 2023) for each TMA within the City. Trash load reductions for existing control actions are based on the most readily available information at the time this updated Long-Term Plan was developed and are subject to change based on new or improved information.

In addition to the trash load reductions achieved to-date via existing control measures, Table 3 also provides preliminary estimates of the trash load reductions anticipated to be achieved through the implementation of planned trash control actions that are summarized in section 2.2. These are preliminary planning level estimates and are subject to change.

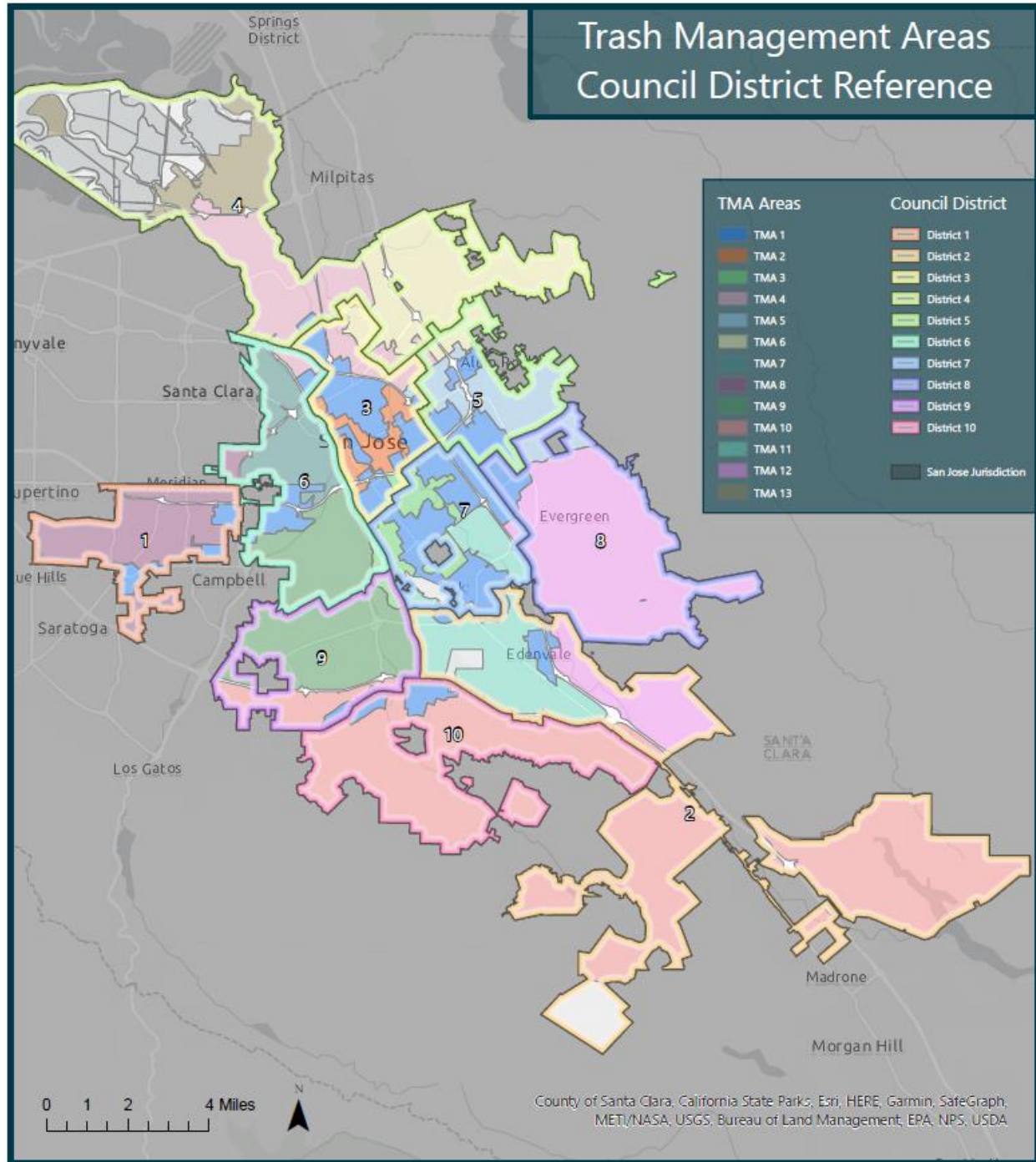
**Table 3.** Trash load reductions achieved by the City of San José to date and the estimated load reductions that are anticipated through the implementation of potential additional trash control measure programs needed to achieve the MRP 3.0 100% trash load reduction benchmark by June 30, 2025

Trash Control Measure	Trash Control Measure Type	Trash Load Reduction (%)	
		Through June 30, 2023	Anticipated by June 30, 2025
Existing FTC Systems	High-flow Capacity, Catch Basin Insert, and Multi-benefit types of FTC Systems	54%	54%
Existing/Ongoing Other Trash Control Measures*	See section 2.1	17%	≥ 7%
Ongoing Creek and Shoreline Cleanups	Trash reduction offset program applicable to 90% TLR benchmark, but not 100% benchmark	10%	NA
Direct Discharge Trash Control Program	Trash reduction offset program applicable to 90% TLR benchmark, but not 100% benchmark	15%	NA
Trash Inspection Program on PLDAs	Control Measure Other than FTC Systems/Devices	--	≤ 26%
Additional FTC Systems and/or Enhanced/New Other Control Measures	High-flow Capacity and Catch Basin Types of FTC Systems and/or Control Measures Other than FTC Systems/Devices	--	~13%
<b>Totals</b>		<b>96%</b>	<b>100%</b>

\*The percent load reduction for existing/ongoing other control measures will decrease as trash generating areas are addressed by other types of trash control measures.

## 4.0 BASELINE TRASH GENERATION MAPS BY TRASH MANAGEMENT AREA (TMA)

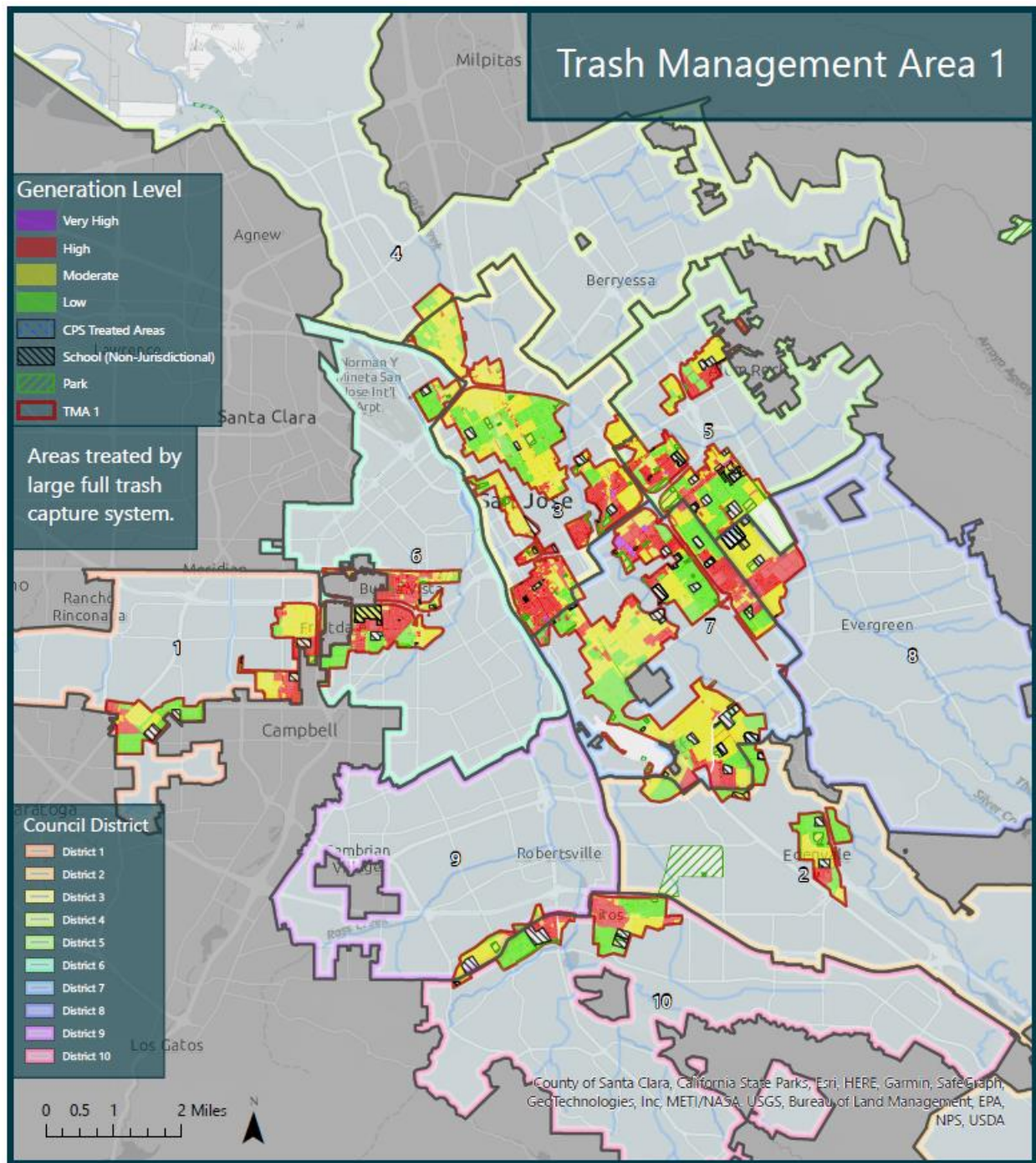




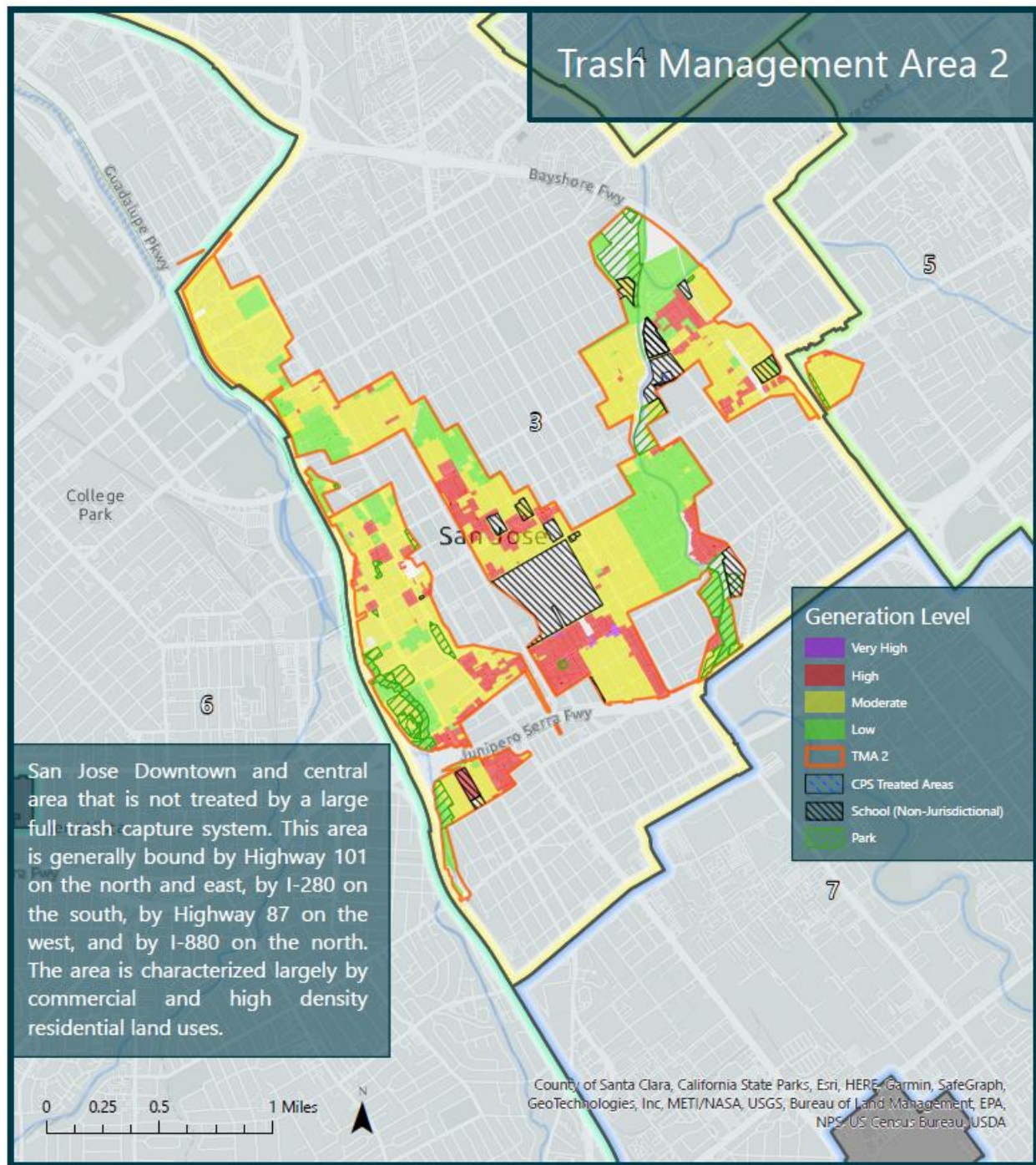
ATTACHMENT

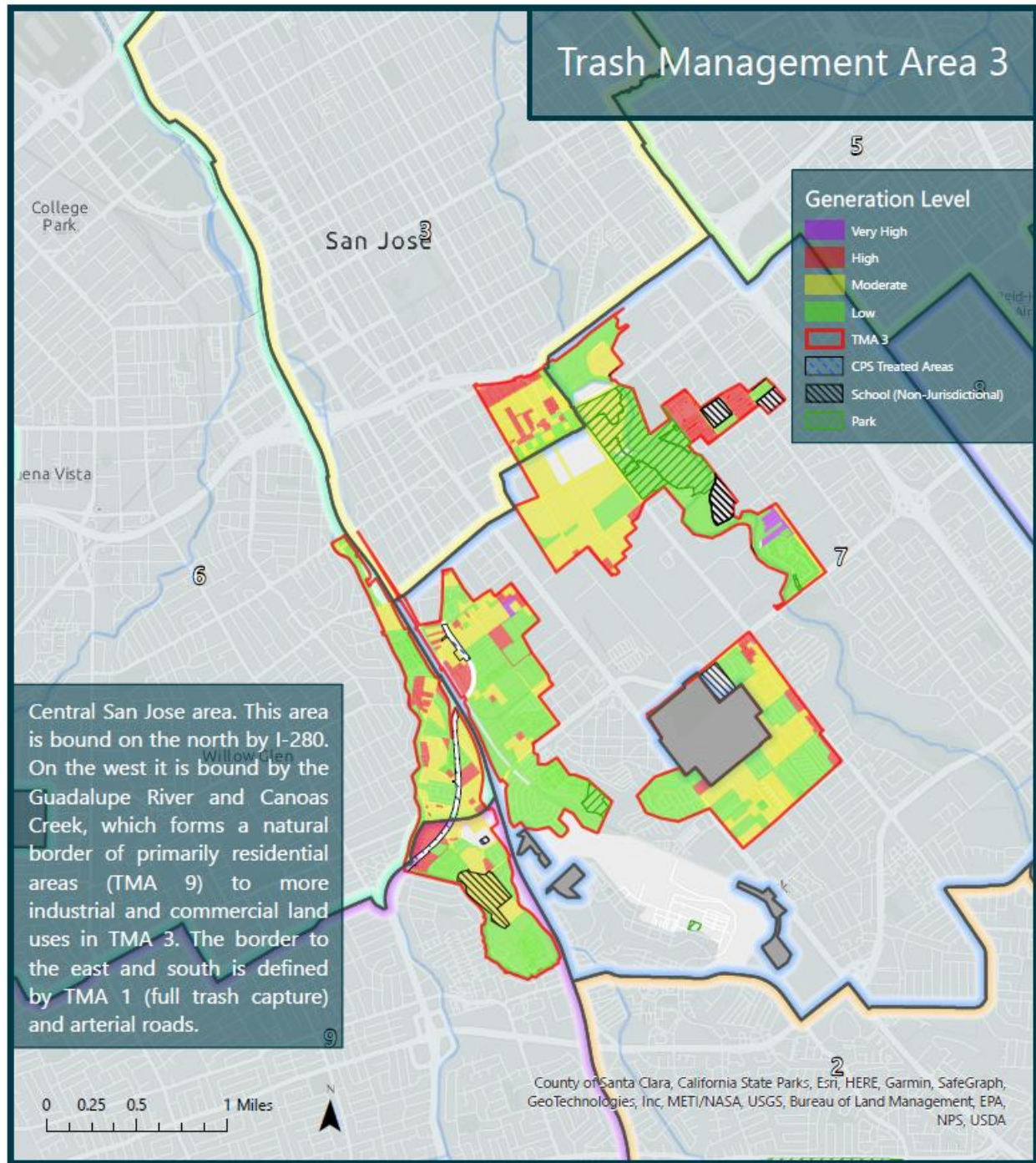
City of San José

Long-Term Trash Load Reduction Plan 2023 Update

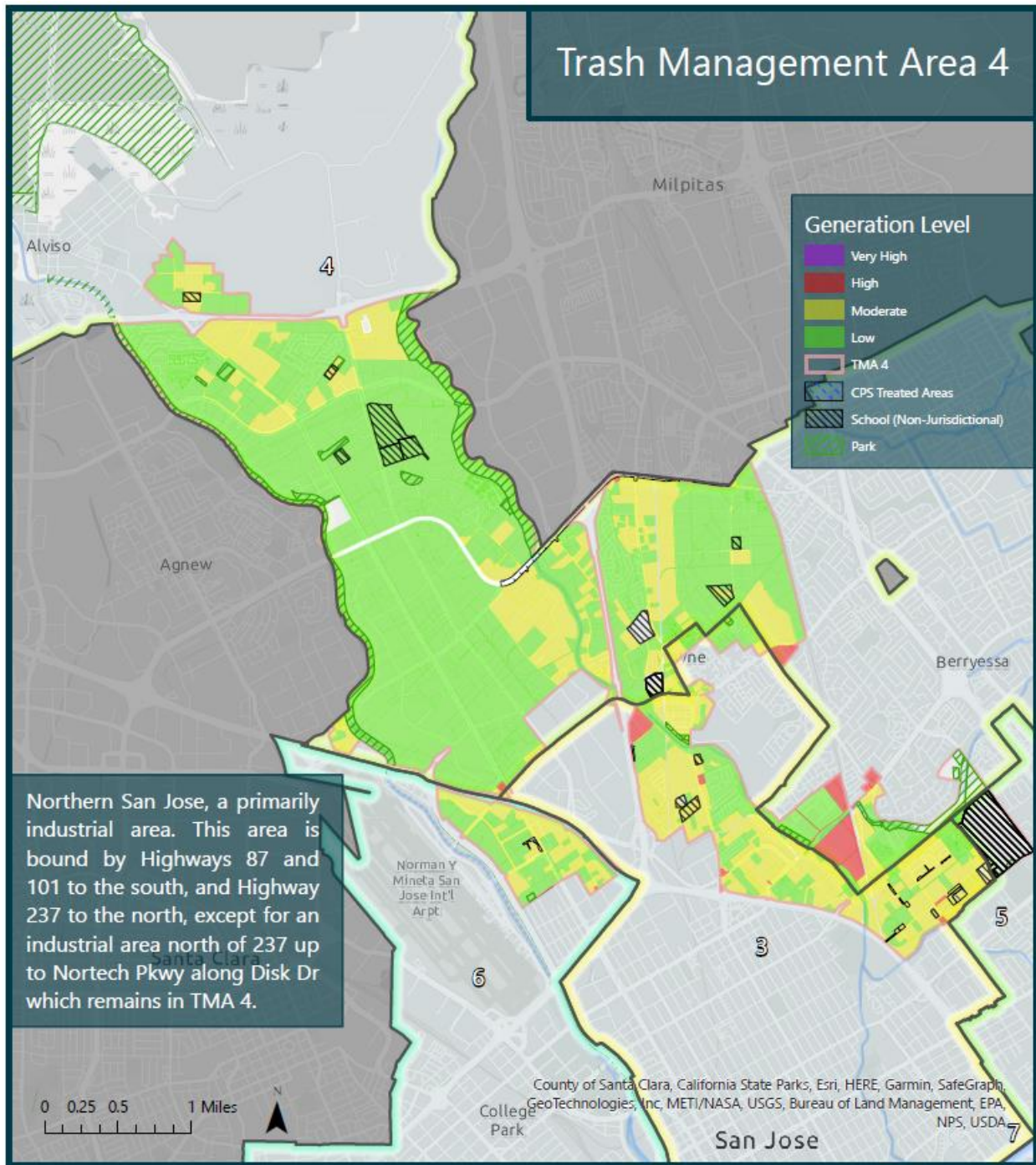








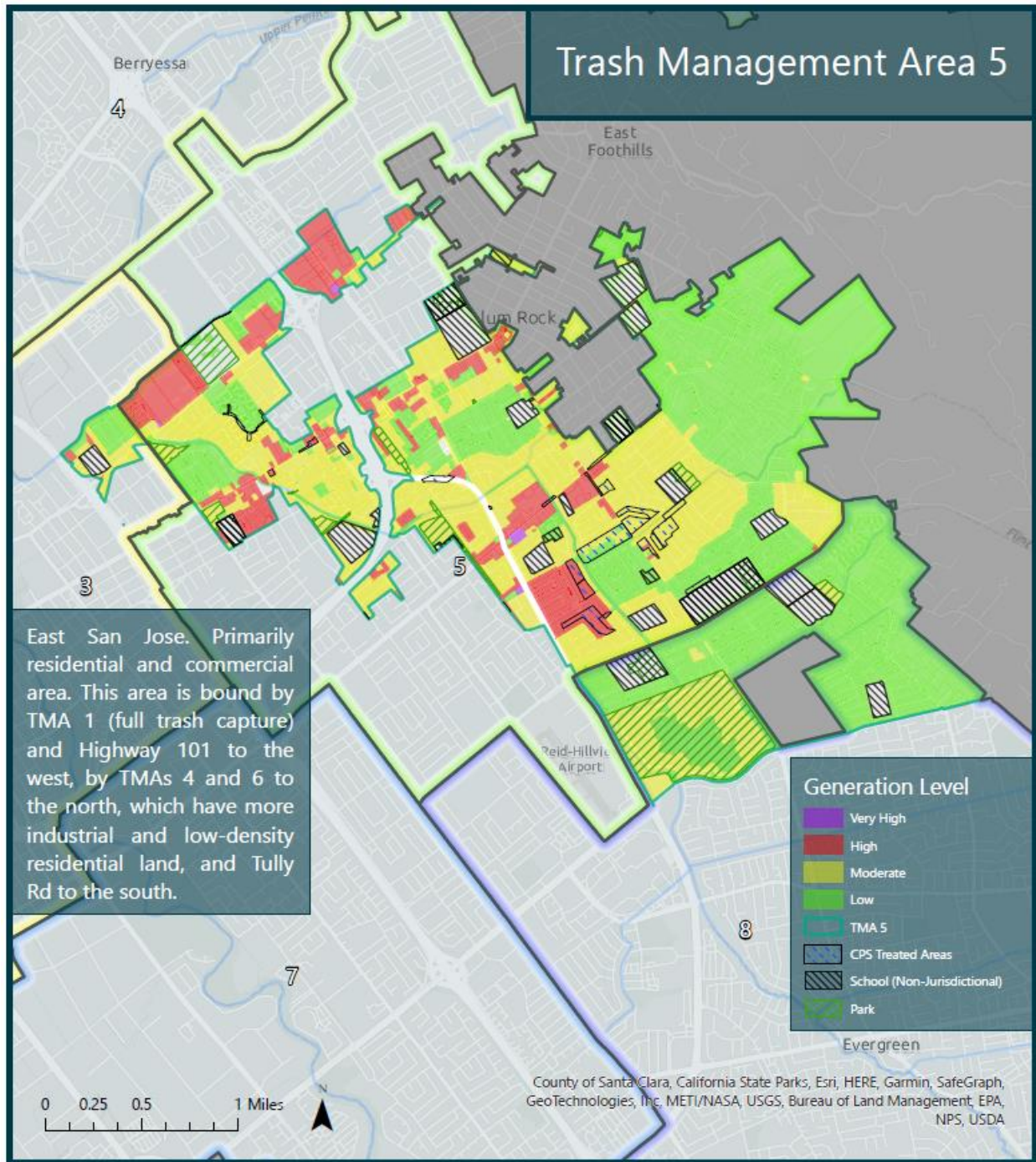




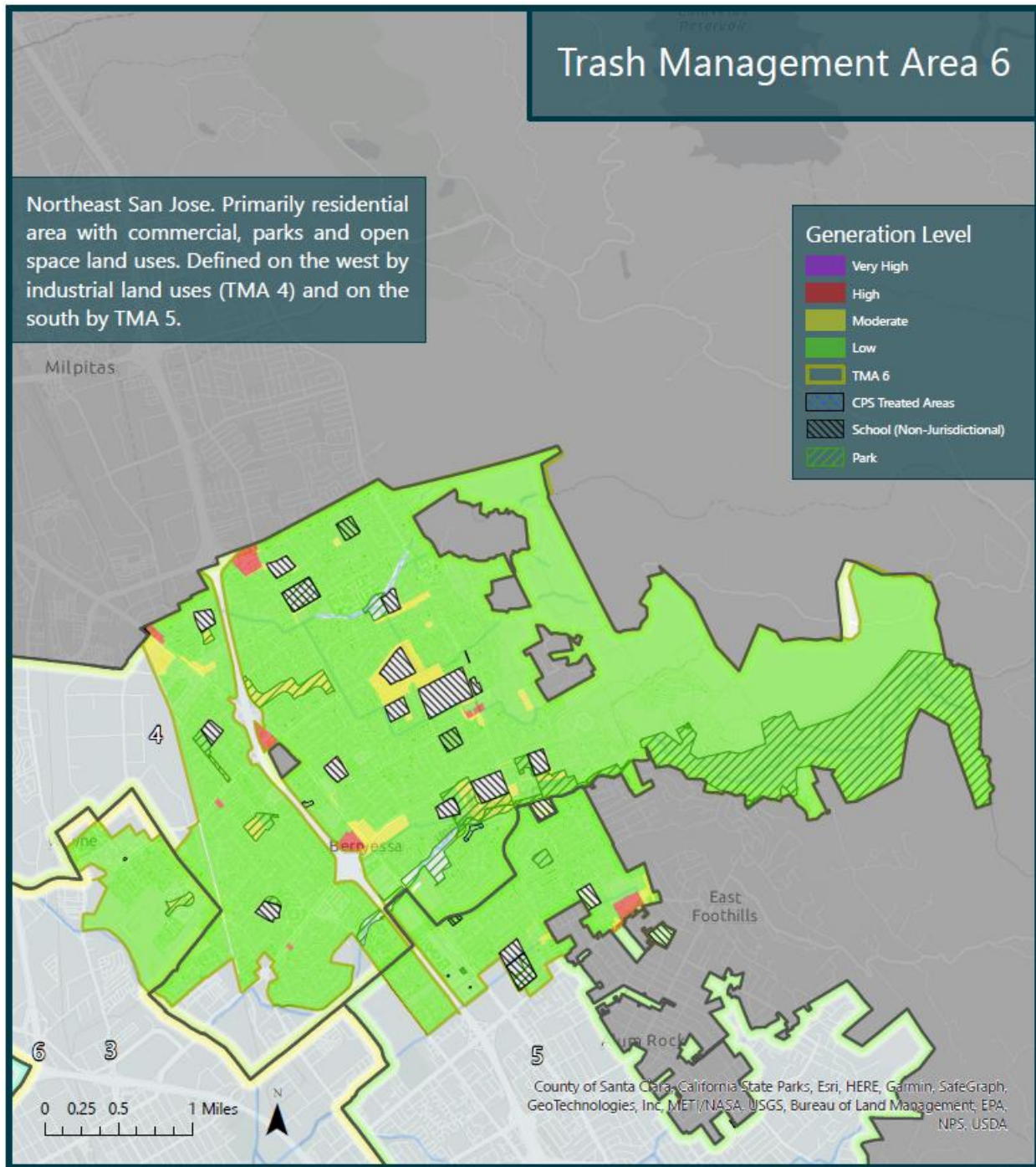
# ATTACHMENT

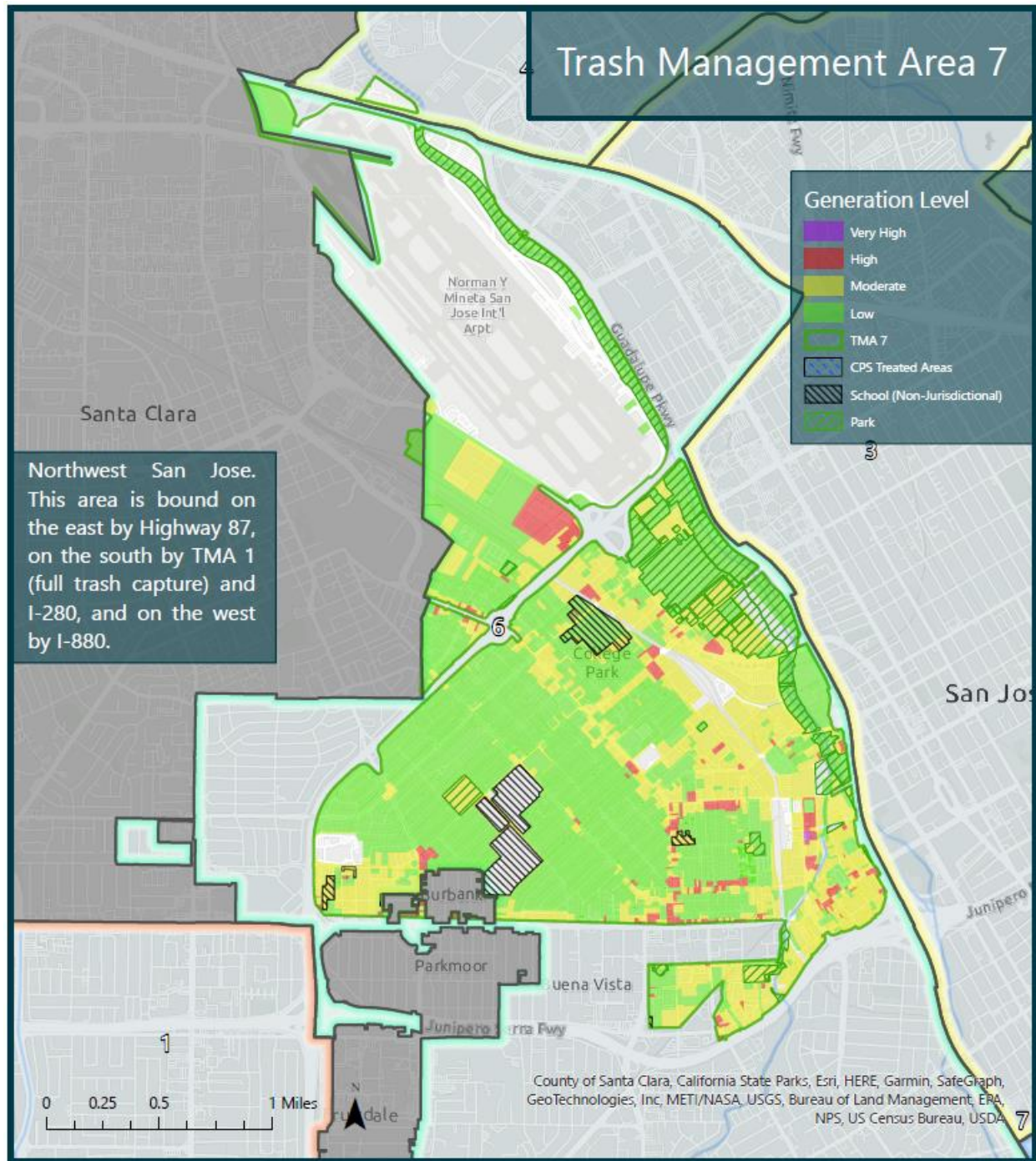
City of San José

Long-Term Trash Load Reduction Plan 2023 Update

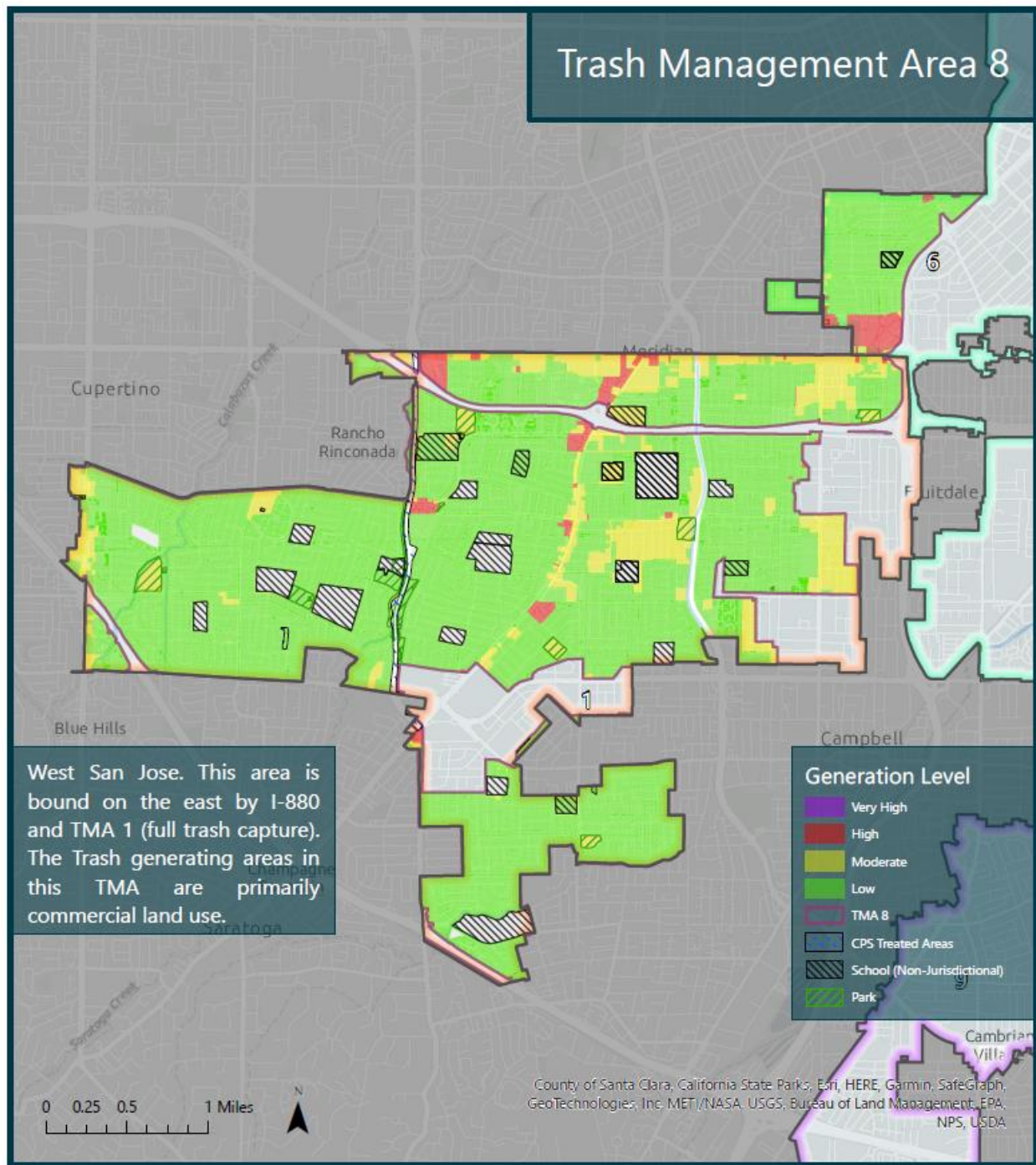








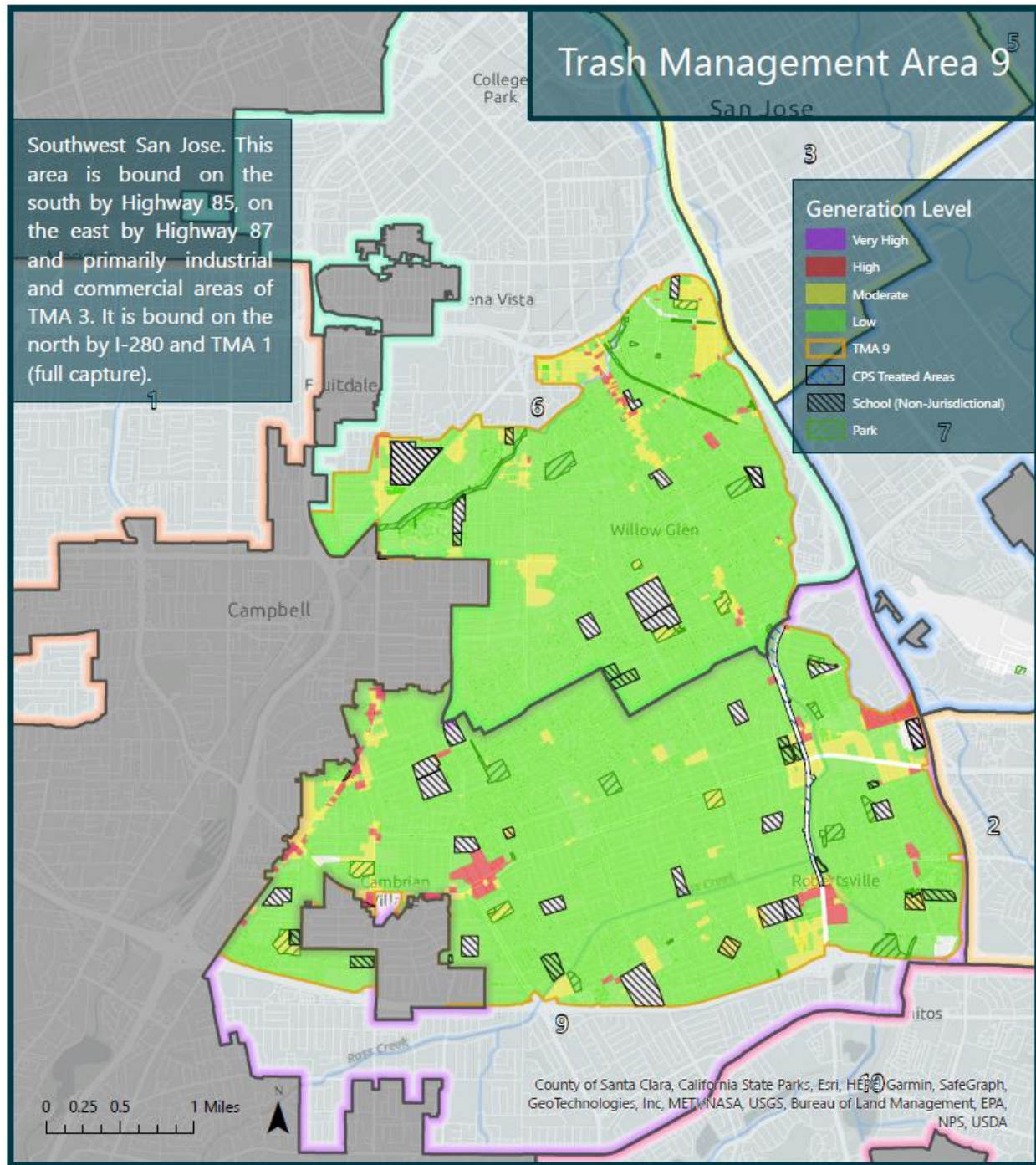




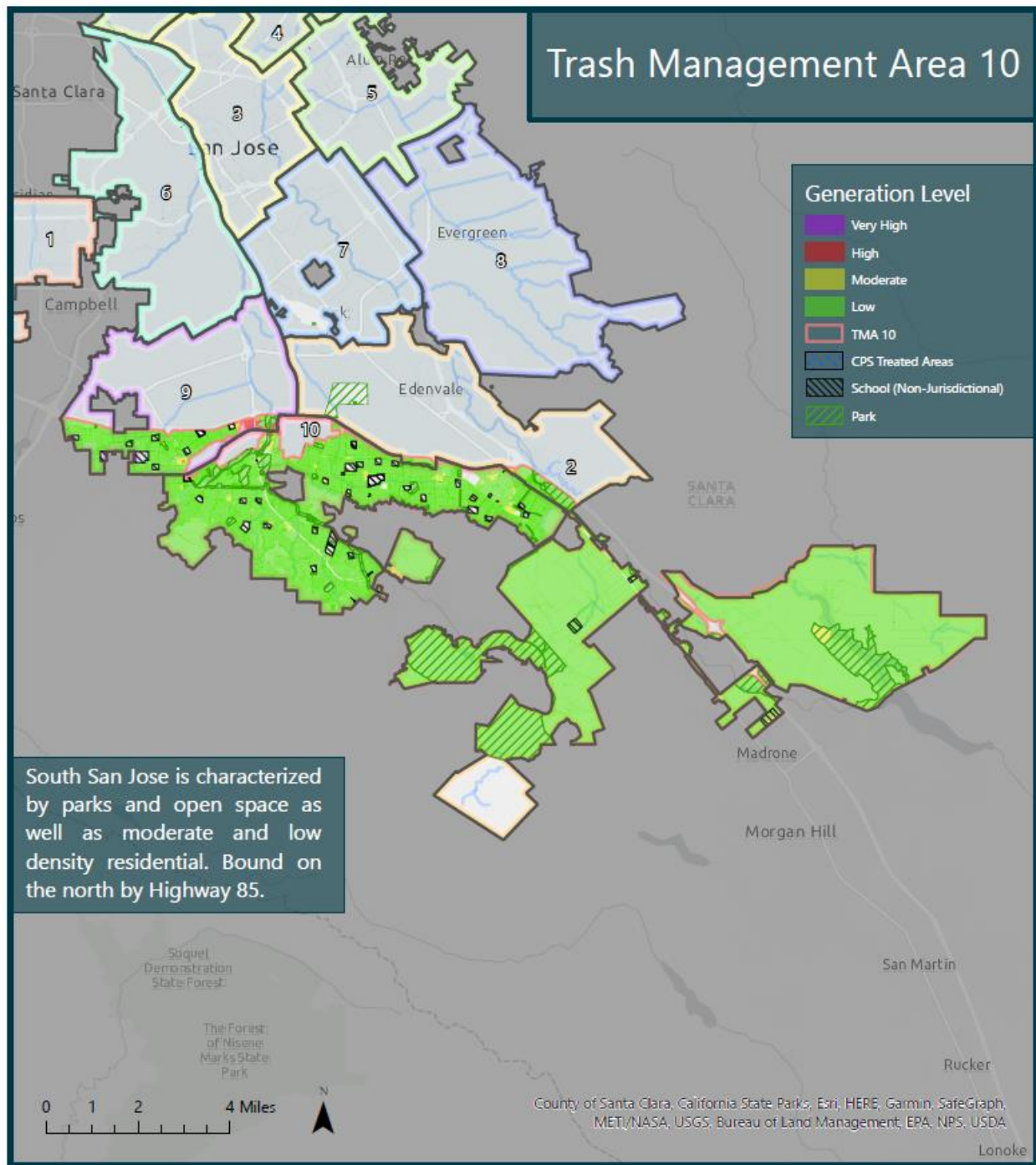
# ATTACHMENT

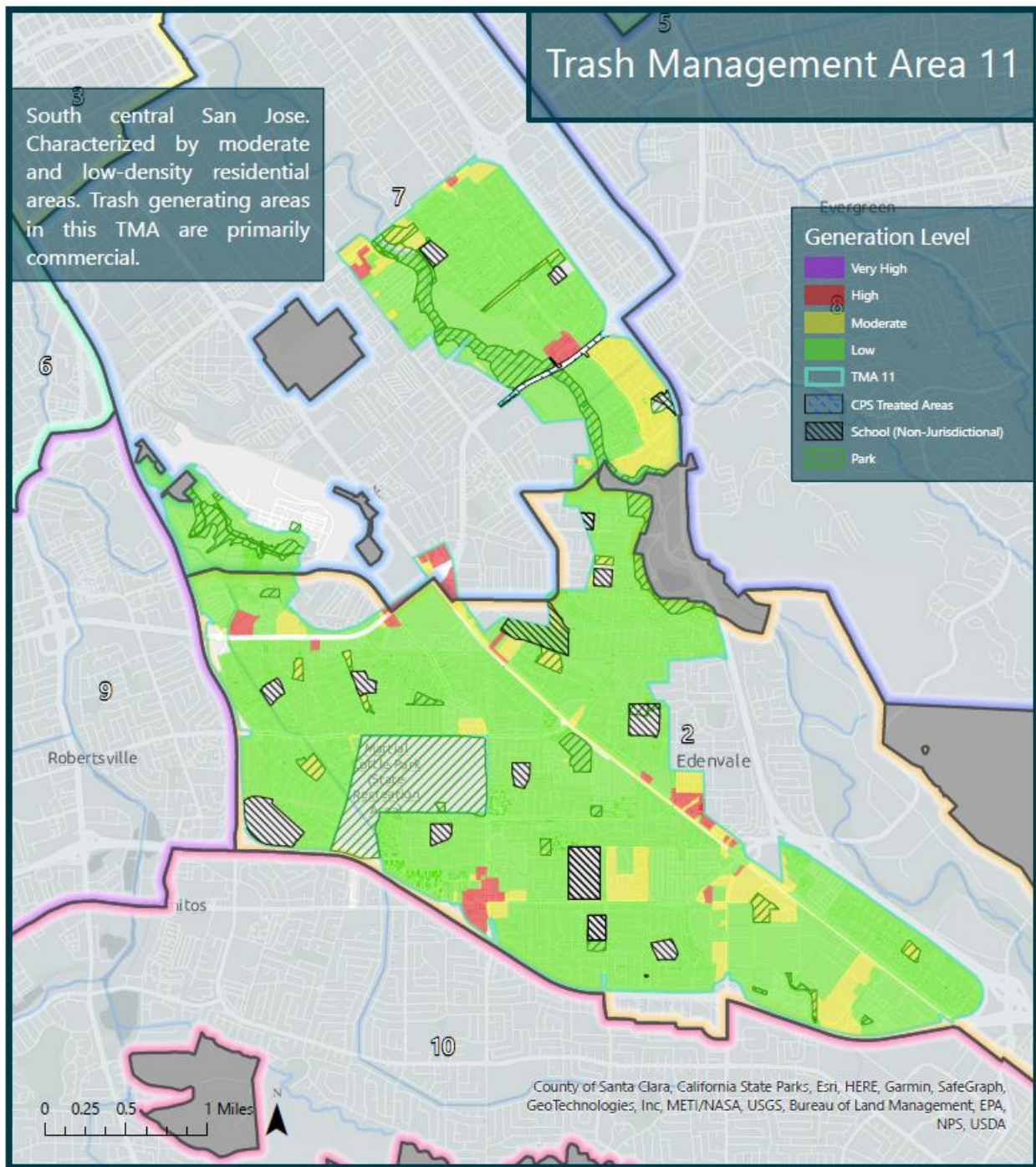
City of San José

Long-Term Trash Load Reduction Plan 2023 Update

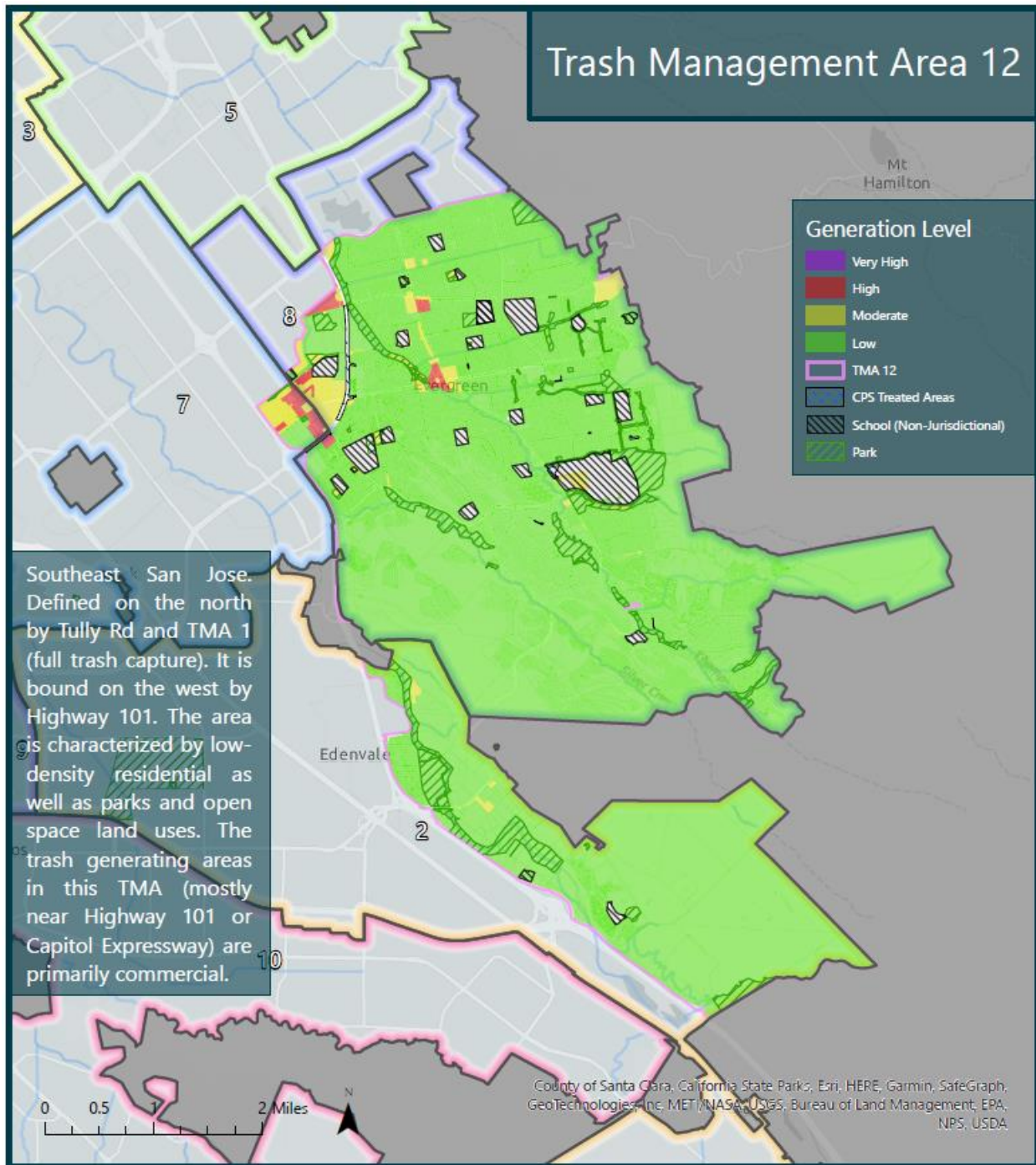


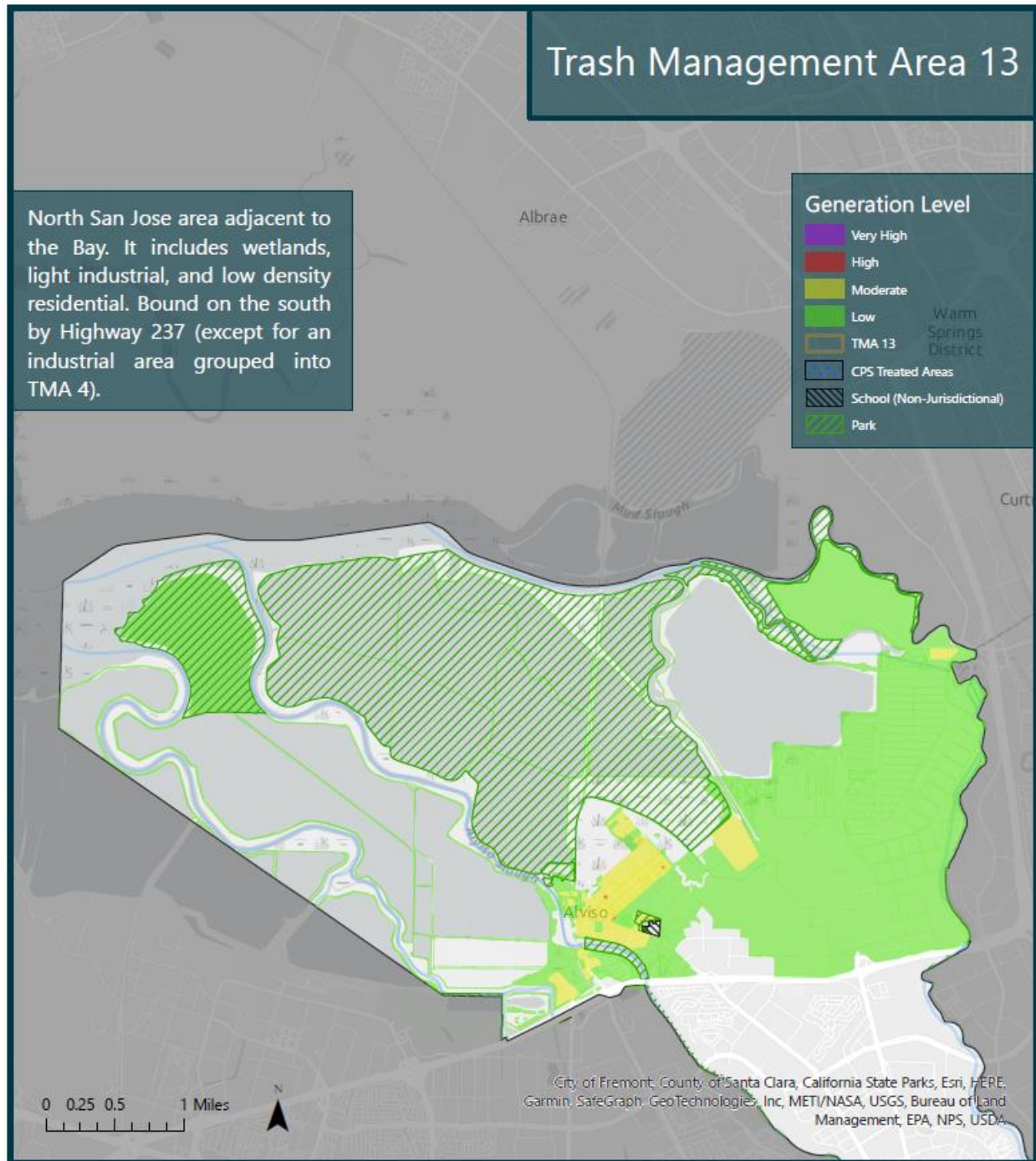












## 5.0 TABLE OF REVISIONS MADE TO THE LONG-TERM TRASH PLAN

Description of Significant Revision	Associated TMA
<b>Revisions Made in FY 13-14</b>	
Update of trash generation rates from moderate to low for areas in north San José based on visual assessments and local knowledge. This area includes the 'clean tech' area roughly bordered by Tasman Drive, Junction Avenue, Brokaw Avenue, and Guadalupe River as well as a mobile home park.	X
Update of trash generation rate from moderate to low for the Kaiser San José campus in south San José based on visual observations.	O
Update of trash generation rate from moderate to low for light industrial area north of Silver Creek Valley Road surrounding Hellyer Avenue based on visual assessments.	P
Update of trash generation rate from moderate to low for Hitachi campus (gated, secured private property).	N
Update of secondary designations for TMA 1, which includes downtown San José. Previously the secondary divisions were based on geography (west, east, and central). Downtown parcels are now subdivided based on trash control measure implementation. Parcels that are part of the downtown Property Based Improvement District that are serviced by Groundwerx, provides enhanced trash control services, are designated by the '1P' subdivision. Remaining parcels in the larger business improvement district remain as TMA 1.	1
Update of trash generation rate from moderate to low for Alum Rock Park in the east foothills of San José based on local knowledge.	A
Modification of trash generation categories based on preliminary results of on land assessments.	9
Modification of trash generation categories based on preliminary results of on land assessments.	13
Modification of trash generation categories based on preliminary results of on land assessments.	T
<b>Revisions Made in FY 14-15</b>	

Description of Significant Revision	Associated TMA
<p>In FY 14-15, the City conducted a preliminary analysis of trash generation in all TMAs that was originally depicted on Trash Generation Maps included in the City's Long-Term Trash Load Reduction Plan using a combination of local knowledge and field observations. Google Street View applications and On-land Visual Assessments were used to reevaluate baseline trash generation. Trash generation categories were reclassified for areas where information indicated that errors had occurred during initial/preliminary trash generation category assignments. Reclassifications to trash generation categories were used for the purposes of calculating baseline (2009) trash generation included in this report (i.e., as an input parameter to the formula used to calculate load reductions reported in section C.10.d). Additional reclassifications may occur in FY 15-16, as a result of the City's efforts to make the Baseline Trash Generation Map as accurate as possible. The City's final map will be submitted consistent with the schedule included in the reissued MRP, tentatively set for adoption in late 2015. Also, after programming portions of three TMAs, the programmed areas were split off and renamed as separate TMAs. TMAs 8ST and 8W are subareas of the City's business districts where public litter cans were added. A third TMA, 8 SR Pilot, was created to evaluate the results of a business engagement pilot that commenced in FY 14-15 and was completed in FY 15-16. The addition of these three new areas raised the total number of TMAs in San José from 47 to 50.</p>	All TMAs
<b>Revisions Made in FY 15-16</b>	
<p>In FY 15-16, consistent with all MRP Permittees, all public K-12 schools, college and university parcels were made non-jurisdictional on the City's baseline trash generation maps. Under California Government Code Sections 4450 through 4461, the construction, modification, or alternation of facilities and/or structures on these parcels are under the jurisdiction of the California Division of State Architect and not the City. The public right-of-way (e.g., streets and sidewalks) surrounding these parcels remain as jurisdictional on the City's baseline trash generation maps. Revised maps that incorporate these revisions are included in City's supplement to its Long-Term Trash Reduction Plan and Assessment Strategy.</p>	B
<p>The City identified programming options for all remaining TMAs.</p>	All TMAs
<b>Revisions Made in FY 16-17 (Updated LTP)</b>	
<p>In FY 16-17, the City reconfigured its TMAs to simplify efforts to implement trash control measures. The number of TMAs in San José was condensed from over 50 TMAs to 13 TMAs. The new TMAs are included in the Long-Term Trash Reduction Plan and Assessment Strategy, 2017 Update in Appendix 10-3 of the FY 21-22 Annual Report on the <a href="#">City's website</a>.</p>	All TMAs
<b>Revisions Made in FY 17-18</b>	
<p>In FY 17-18, no revisions or updates were made to the Long-Term Trash Load Reduction Plan.</p>	All TMAs
<b>Revisions Made in FY 18-19</b>	
<p>In FY 18-19, no revisions or updates were made to the Long-Term Trash Load Reduction Plan.</p>	All TMAs



Description of Significant Revision	Associated TMA
<b>Revisions Made in FY 19-20</b>	
<p>In FY 19-20, the City revised baseline trash generation maps to incorporate the results from baseline trash generation reassessments conducted in FY 18-19 on private parcels greater than 10,000 ft<sup>2</sup>. Assessment sites consisted of private parcels with drainage areas greater than 10,000 ft<sup>2</sup> that appeared to be mischaracterized as moderate, high or very high trash generating areas based on desktop evaluations. City staff assessed the sites suspected as being mischaracterized twice using the appropriate On-land Visual Trash Assessment protocol to confidently establish a baseline level of trash generation. This approach was consistent with the findings of BASMAA's <i>Tracking California's Trash</i> project, funded by the State Water Resources Control Board, and recent guidance provided by the State Water Board to Phase II MS4s. For those sites that received a low ("A") OVTA score during both assessment events, the baseline trash levels depicted on the City's Baseline trash generation maps were updated to illustrate a "low" trash generation level. The City's revised Baseline Trash Generation Map can be downloaded at <a href="https://scvurppp.org/trash-maps/">https://scvurppp.org/trash-maps/</a>.</p>	All TMAs
<b>Revisions Made in FY 20-21</b>	
<p>In FY 20-21, no revisions or updates were made to the Long-Term Trash Load Reduction Plan.</p>	All TMAs
<b>Revisions Made in FY 21-22</b>	
<p>In FY 21-22, the City conducted a thorough evaluation of its baseline trash generation map, treatment areas for existing trash full capture systems, and identified which multi-beneficial (bioretention) treatment facilities installed in the City meet the trash full capture design standard, as described in the MRP. The City's 2009 baseline trash generation map was reevaluated to ensure that jurisdictional areas draining to the City's MS4 are included on the map and that these areas were assigned the appropriate trash generation category when the original baseline map was created. Based on the findings of this evaluation, the City's baseline map was refined and now provides a much more accurate illustration of both its jurisdictional areas and the associated baseline level of trash that was generated on these areas in 2009. The areas treated by existing trash full capture systems were also evaluated and refined based on more accurate information on drainage patterns and the configuration of the City's MS4. These refined treatment area boundaries provide a much more accurate illustration of the land areas draining to these full capture systems. Lastly, in FY 21-22 the City began to identify which existing multi-beneficial (bioretention) treatment facilities achieve the trash full capture design standard, as described in the MRP and the State Water Resources Control Board fact sheets on multi-beneficial full capture systems. A technical memorandum describing the analysis conducted by the Santa Clara Valley Urban Runoff Program (SCVURPPP) that supports the criteria used to identify the applicable bioretention facilities is included in the SCVURPPP FY 21-22 Annual Report (Section 10). The City's Long-term Trash Load Reduction Plan was updated with these refined jurisdictional areas and full capture treatment drainage boundaries and refined baseline trash generation levels, which are included in Appendix 10-1 of the FY 21-22 Annual Report on the <a href="#">City's website</a>.</p>	All TMAs

Description of Significant Revision	Associated TMA
<b>Revisions Made in FY 22-23 (Updated LTTP)</b>	
<p>In FY 22-23 per the MRP 3.0 requirements, the City submitted an Updated Long-Term Trash Load Reduction Plan which includes updated descriptions of trash load reduction control actions currently being implemented. Since the control actions are implemented primarily city-wide, significant formatting changes were made to streamline content, restructure framework and organize by control actions instead of by TMA. More detail was added to explain funding sources for each action and a new description was added to explain public litter can delineation.</p> <p>The following actions that were included in the 2017 Plan are not included in this Plan because they are no longer in place based on trash load reduction evaluation or resource availability:</p> <ul style="list-style-type: none"> <li>• Environmental education partnerships campaigns with San Jose Earthquakes, San Jose Sharks and San Jose Giants</li> <li>• San Jose Park Rangers' Watershed Protection Team (patrolled waterways to reduce illegal encampment activity via criminal citations)</li> <li>• Partial-Capture Treatment Devices (pilot project utilizing automatic retractable screens (ARS) in FY 13-14 that included approximately one hundred inlets adjacent to a large retail mall with high and medium trash generation areas)</li> </ul> <p>The updated plan also includes new descriptions for trash load reduction control actions planned for implementation and their anticipated implementation schedules. New actions added in this Plan are:</p> <ul style="list-style-type: none"> <li>• Waste Management For Your Special Event</li> <li>• Trash Inspection Program on Private Land Drainage Areas (PLDA)</li> <li>• Litter Enforcement</li> </ul>	All TMAs