

Covid-19 Digital Inclusion Branch Update

- Jill Bourne, City Librarian
- Matt Cano, Public Works Director
- Rajani Nair, Civic Innovation



Digital Inclusion Priority

Lack of Access to Digital Connectivity, Tools, and Resources:

- Isolates residents from accessing critical services;
- Inhibits communication and engagement;
- Disrupts educational opportunities and progress; and
- Exacerbates existing social and economic inequities.



Digital Inclusion Milestones

2016

- Approved Smart City Vision
- Approved Education and Digital Literacy Strategy
- Access East Side

2017

- Conducted street survey of digitally excluded populations
- Approved Broadband and Digital Inclusion Strategy

2018

- Executed Public-Private Partnership agreements with AT&T, Verizon, and Mobilitie
- Created Digital Inclusion Fund
- Adopted Education and Digital literacy strategy

2019

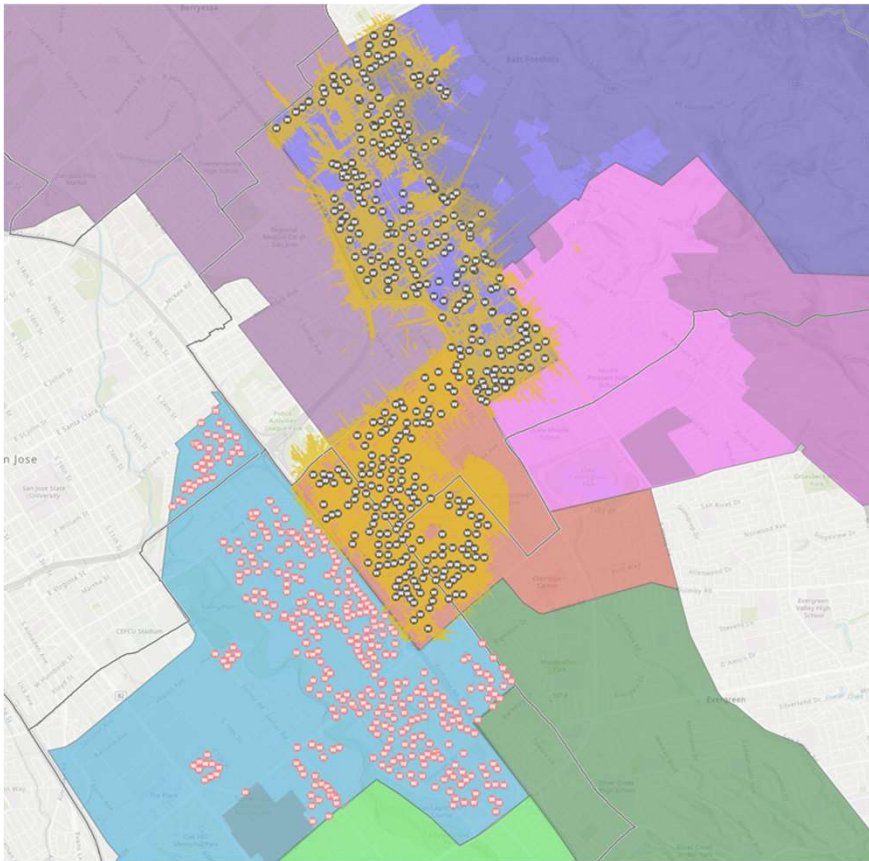
- Recommended Donor Advised Fund model
- Selected California Emerging Technology Fund as partner
- Appointed Advisory Board
- Hired Program Director and Program Manager

2020

- Award 23 digital inclusion grants totaling \$1M
- Approved EOC Digital Inclusion Funding strategy
 - Expand Access East Side
 - Outdoor Wi-Fi at City owned facilities
 - AT&T Student and Public Hotspots



Access East Side Community Wi-Fi deployment



Potential Outcomes (student and non-student population served within school attendance areas)

- James Lick – 27,000
- Overfelt – 22,800
- Yerba Buena – 38,800

Future Potential Outcomes (student and non-student population served within school attendance areas)

- Independence – 81,700
- Oak Grove – 37,250
- Andrew P. Hill – 49,500
- Silver Creek – 33,200
- Mt. Pleasant – 20,275



Access East Side Community Wi-Fi Buildout Funding

East Side Union High School District (ESUHSD) Attendance Area	ESUHSD & East Side Alliance Funding	Grant Funds (CDBG)	City Commitment
James Lick	\$650,000		
Overfelt	\$650,000		
Yerba Buena	\$1,997,242		
Independence	\$650,000	\$1,000,000	\$250,000
Oak Grove	\$650,000	\$1,000,000	\$250,000
Andrew P. Hill	\$650,000		\$1,250,000
Silver Creek*	\$1,900,000		
Mt. Pleasant*	\$1,900,000		
Additional Wireless Access Nodes			\$500,000
Total	\$9,047,242	\$2,000,000	\$2,250,000

* Pending and Funding agreement approval by City Council (est. Nov. 2020)



Procurement Approach

1. City Funded Procurement process for Andrew P. Hill, Mt. Pleasant and Silver Creek



2. Federal Funded Procurement process for Independence and Oak Grove





Access East Side Community Wi-Fi Buildout schedule

ESUHSD Attendance Area	Procurement	Planning and Design	Construction Start	Open for Public Use
James Lick				★
Overfelt				★
Yerba Buena			Sept. 2020	Jan. 2021
Independence*		Dec. 2020	July 2021	Nov. 2021
Andrew P. Hill*		Feb. 2021	Sept. 2021	Feb. 2022
Oak Grove*		June 2021	Mar. 2022	Sept. 2022
Silver Creek	Pending a Funding agreement approval by City Council (est. Nov. 2020)			
Mt. Pleasant				

* Schedule pending vendor selection



Ongoing Work & Next Steps

Complete Access East Side Wi-Fi Consultant RFQ procurement for federally funded projects (CDBG) by October 2020

Complete Access East Side Wi-Fi Consultant RFQ procurement for City funded projects by November 2020

Work with selected vendors to optimize project schedule

Complete Yerba Buena Community Wi-Fi Buildout by December 2020

Upcoming Council Actions:

October: Seek Council approval for Delegation of Authority to Award by Director of Public Works

November: Seek Council approval of ESUHSD funding agreement for ongoing operations and maintenance and build out for Silver Creek and Mt. Pleasant Attendance Areas

Enhance Indoor + Outdoor Wi-Fi at City Facilities

Community Centers & Parks

- Alma Community Center
- Alum Rock Youth Center
- Almaden Community Center
- Bascom Library & Community Center
- Berryessa Community Center
- Camden Community Center
- Evergreen Community Center
- Mayfair Community Center
- Roosevelt Community Center
- Seven Trees Community Center & Library
- Southside Community Center
- Starbird Community Center*
- Welch Community Center*
- Willow Glen Community Center

Libraries

- Educational Park Branch
- Biblioteca Latinoamericana
- Dr. Roberto Cruz Alum Rock Branch
- Bascom Library & Community Center
- Hillview Branch
- Evergreen Branch
- Joyce Ellington Branch
- East San Jose Carnegie Branch
- Alviso Branch

* Indoor Wifi only



City owned facilities outdoor Wi-Fi Buildout

City owned facilities	Contract Award for Consultant	Bid Advertisement	Contract Award for Contractor	Construction Start	Timeline for Completion	Open for Public Use
Libraries* (9 facilities)	8/14/20	9/30/20	11/06/20	11/16/20	12/23/20	01/15/21
Community Centers* (8 facilities)	8/14/20	9/30/20	11/06/20	11/16/20	12/23/20	01/15/21

* Schedule pending vendor selection

Outreach efforts



Access East Side Free Community Wi-Fi

Stay Connected When it Matters Most

- Use internet for unlimited time & data as long as you're within signal service.
- Nearby households may be able to access the Wi-Fi network indoors.
- Signal is strongest outdoors. Signal may be weaker and/or intermittent indoors.

How to Connect Your Devices

Search for "Free Public Access East Side" in your device's Wireless network options (Select the  icon on your device).

Most recent laptops, tablets and smartphones are wireless-enabled.



Coverage Areas

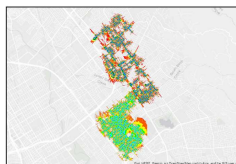
Available for residents and visitors near:



James Lick High School
57 N. White Rd.
San Jose, CA 95127



Overfelt High School
1835 Cunningham Ave.
San Jose, CA 95122



sjpl.org/AccessEastside

The City of San Jose is proud to partner with East Side Union High School District and SmartWAVE to offer this service to residents and visitors.



Access East Side Wi-Fi Gratuito en Zonas del Este de San José

Mantente Conectado Cuando más Importa

- Usa Internet por tiempo y datos ilimitados siempre que estés dentro del servicio de señal.
- Los hogares cercanos pueden acceder a la red Wi-Fi en interiores.
- La señal es más fuerte los exteriores. La señal puede ser más débil y/o intermitente en interiores.

Cómo Conectar tus Dispositivos Wi-Fi

Busca "Free Public Access East Side" en las opciones de red inalámbrica de tu dispositivo (Selecciona el icono  en tu dispositivo).

Las computadoras portátiles, tabletas y teléfonos inteligentes más recientes son inalámbricos.

Áreas de Cobertura

Consulta el mapa al lado opuesto para conocer las zonas con cobertura Wi-Fi gratis.

sjpl.org/es/AccessEastside

Access East Side Wi-Fi Miễn Phí Cho Cộng Đồng

Giữ Kết Nối Khi Tối Cần

- Sử dụng internet không giới hạn thời gian và data khi nào quý vị còn trong vòng dịch vụ tín hiệu.
- Các hộ gần bên có thể bắt được Mạng Wi-Fi trong nhà.
- Tín hiệu mạnh mẽ nhất bên ngoài. Tín hiệu có thể yếu hơn và/hoặc đứt đoạn trong nhà.

Cách Kết Nối Thiết Bị Của Quý Vị

Truy cập "Free Public Access East Side" trong lựa chọn Mạng Không Dây (Wireless network) của thiết bị quý vị (Chọn biểu tượng  trên thiết bị của quý vị).

Hầu hết các máy vi tính xách tay, vi tính bảng và điện thoại thông minh đều được kích hoạt cho dịch vụ không dây.

Vùng Phủ Sóng

Dành cho các cư dân và khách viếng thăm gần.

sjpl.org/vi/AccessEastside

Select Language

Hours And Locations

Help

Login / My SJPL

San José Public Library

Look in the Catalogue by Keyword

SEARCH FOR

Your library

Locations

Events

Books and Virtual Library

Learning


Children and adolescents

About us

All library buildings remain closed. Visit an outside express pickup location when your warehouses are ready - appointments are available but not required.

Start / Your library / Characteristics / SJ Access / Community Wi-Fi on East Side San José

Community Wi-Fi on East Side San José




Connect!

Free community Wi-Fi is available to residents and visitors on the East side of San José near these areas:

- James Lick High School
- Overfelt High School

Connecting your devices

Find "Free East Side Public Access" in your device's wireless network options (select the  on your device.) Newer laptops, tablets, and smartphones are wireless.

Learn more about the privacy of your data.

All ready!

Thank you for using the outdoor wireless network of the city of San José. Our goal is to provide residents and visitors with a friendly online service. Note that:

- The coverage of the network map is approximate; weaker coverage may exist in some areas due to cityscape and interference.
- User experience will vary based on client device (phone, tablet, laptop) and distance from Wi-Fi access point.
- The frequencies used are not licensed, so interference from neighboring networks and other radio sources may occur and affect your service.
- This free Wi-Fi network was designed for outdoor coverage; Indoor connectivity is not guaranteed.
- Bandwidth and Internet usage is a free and shared service. There may be delays in downloading large files, especially during heavy use periods of the day.

The City of San Jose is proud to partner with the East Side Union High School District and SmartWAVE to offer this service to residents and visitors. [Learn more about SJ Access](#), the City's digital inclusion initiative.

Coverage areas

Wi-Fi is available to residents and visitors near:




Image : Wi-Fi coverage map of the East Side area. The strongest signals are shown in green and blue.

Our Innovation Ecosystem

Stanford
GRADUATE SCHOOL OF
EDUCATION

ROSENDIN
ELECTRIC

CETF
CALIFORNIA EMERGING TECHNOLOGY FUND

SmartWAVE Technologies
Empowering the Wireless Generation

CUPERTINO
ELECTRIC INC.

Dalberg



CommunityInsights
A PROJECT OF GREATNONPROFITS

PG&E

SAN JOSÉ
MAYOR'S OFFICE OF
TECH & INNOVATION

techCU
TECHNOLOGY CREDIT UNION

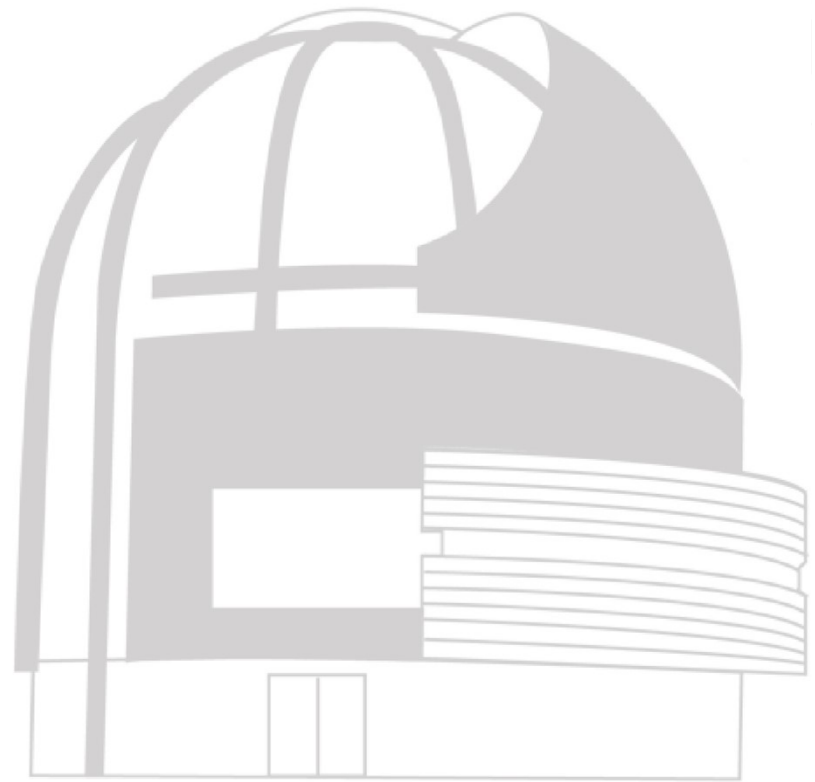
SILICON VALLEY
Talent Partnership
Joint Venture
SILICON VALLEY

CITY OF
SAN JOSE
CAPITAL OF SILICON VALLEY

PayPal

pwc

COMCAST



Covid-19 Digital Inclusion Branch Update

Questions?