



Street Sweeping Overview

John Ristow
Director of Transportation

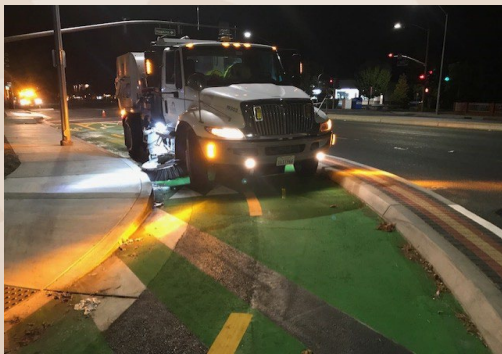
Rick Scott
Deputy Director, DOT

Eric Hon
Division Manager, DOT

Jennifer Seguin
Division Manager, DOT

Purpose of Street Sweeping

- National Pollutant Discharge Elimination System (NPDES) established by 1972 Clean Water Act
- Street sweeping is included as a best practice requirement in the stormwater discharge permit issued to San José
- Prevents pollutants from entering storm drains and waterways
 - Sediment
 - Nutrients (fertilizers and animal waste)
 - Toxic metals
 - Organic material



Program Overview

Annual Curb Miles Swept by Program

Contractor (RSS)

Frequency

- Once per month
- 20 enhanced sweeps/year
- Spot cleaning as needed

Parking restrictions

- 24% of routes (367 miles)

36,000
(54%)

City Crews

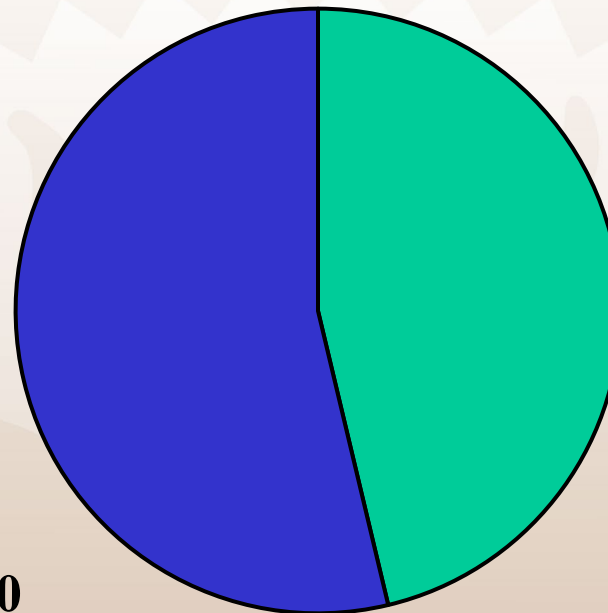
Frequency:

- Downtown - nightly
- Business Dist. – 2x/week
- Arterials/Bikeways – 2x/month

Parking Restrictions

- 50% of routes (179 miles)

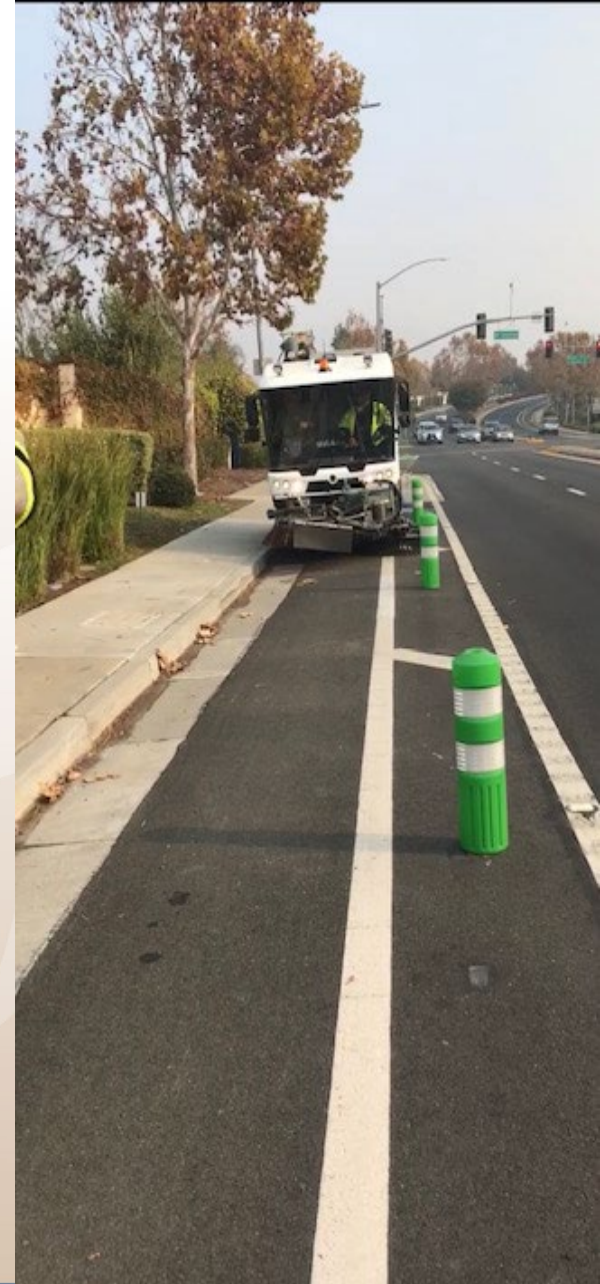
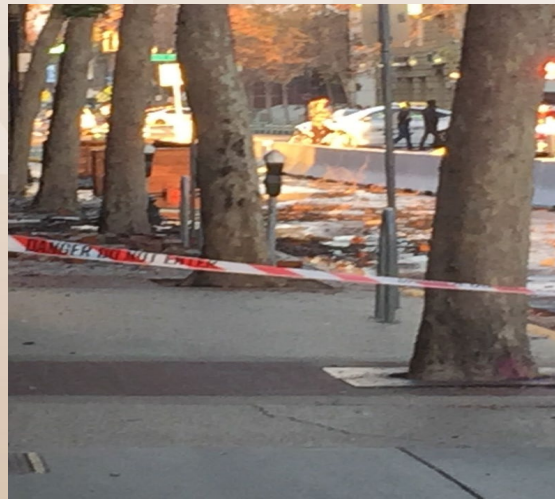
31,000
(46%)



■ In-house ■ Contractual

City Crews

- Sweeper Operators employed by DOT
- City owns sweepers for streets and bike lanes
- Routine sweeping and DOT sweepers respond to calls when needed
 - Debris in the street
 - Police & Fire emergency cleanup



Residential Street Sweeping (RSS)



- Sweepers Operators employed by GreenWaste, contractor owns sweepers
- DOT inspection staff assess effectiveness of contractual sweeping, respond to complaints and other sweeping obstruction issues
- Inspection staff coordinate enhanced sweeps and debris removal
- Track parking prohibition signage requests and verify parking impacts



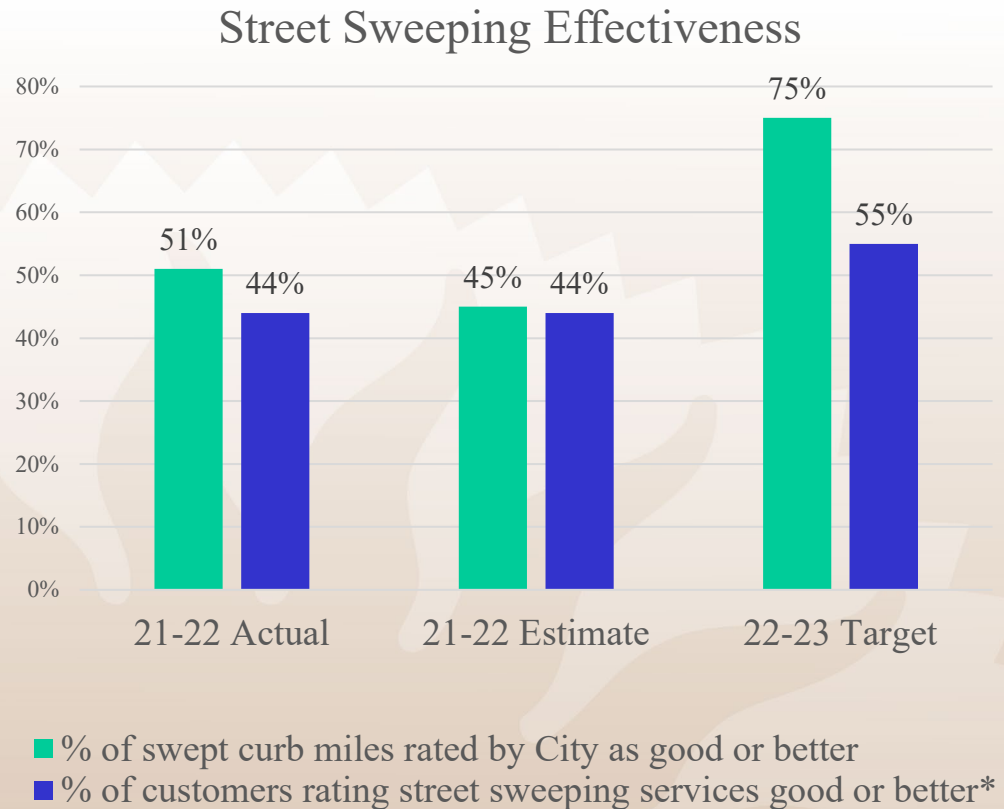
Sweeping Barriers & Challenges



- Leaves and landscape debris piles
- Parked cars
- Low-hanging tree branches (14' clearance needed)
- Waste Containers

Core Service Measurement

- Two effectiveness measures
 - City
 - Customers*
- Based on 5-point scale
- Good or better rating based upon effectiveness and satisfaction with street appearance (4 or greater on a 1-5 scale)



* The Environmental Services Department conducts a resident survey once every two years (Residential Garbage and Recycling Survey). The next Survey is scheduled in winter 2024.

Route Completion Tracking

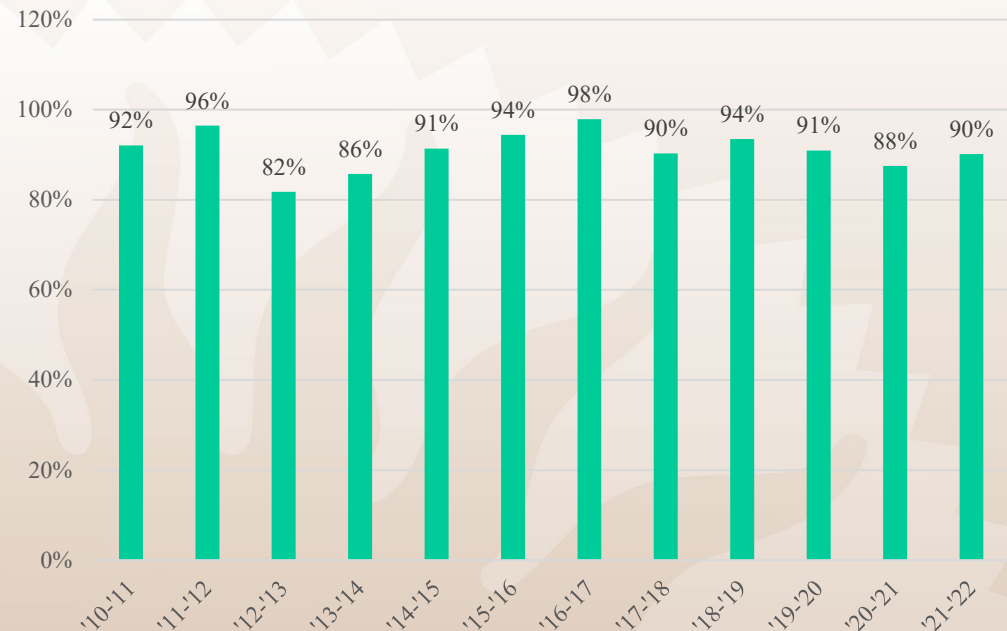
City Crews

- Route completion tracked daily via telematics
- Missed areas completed on Fridays

Contractor (RSS)

- Spot check with inspector
- Contractually obligated to complete every route

Route Completion Over Time



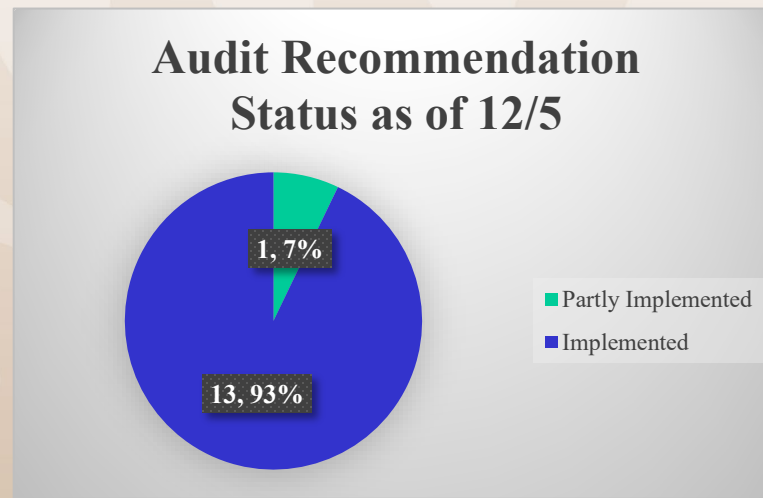
Street Sweeping Audit

1. Audit Conducted in 2016; 14 Recommendations

- 13/14 recommendations implemented as of 12/5/2022.

2. **In Progress:** Recommendation #1: DOT's street sweeping operation should stop emptying street sweepings onto street.

- Equipment procurement delayed as a result of COVID-19 supply chain impacts/ staff member hired



Sweeping Lookup Tool

Residents and businesses can look up their sweep day at:
www.sjenvironment.org/lookup (ESD website)

The screenshot shows a web browser window displaying the "Utility Services Lookup" tool. The address entered is "200 E Santa Clara St, San Jose, California". The sidebar on the right provides the following information:

- Details for this Address**
- Holiday Calendar**
- Residential Waste Pickup**
 - Pick up Day:
 - Garbage**
 - Hauler: [GreenTeam \(MFD\)](#)
 - Phone: (408) 282-4400
 - Recycling & Junk Pickup**
 - Hauler: [GreenTeam \(MFD\)](#)
 - Phone: (408) 282-4400
 - Yard Trimmings**
 - Hauler: [GreenTeam \(MFD\)](#)
 - Phone: (408) 283-4800
- Details**

Schedule a free Junk Pickup by contacting your recycling hauler listed above by phone or clicking the link and completing the contact form.
- Street Sweeping**
 - Nearest Street: **E Santa Clara St**
 - Sweep Day: **Mondays and Thursdays**
 - Sweep Time: **3am - 6am**
 - Parking Restrictions: **North Side: No Parking 3am-6am Any Day, South Side: No Parking Monday And Thursday, 3am-**



Street Sweeping Overview

John Ristow
Director of Transportation

Rick Scott
Deputy Director, DOT

Eric Hon
Division Manager, DOT

Jennifer Seguin
Division Manager, DOT