

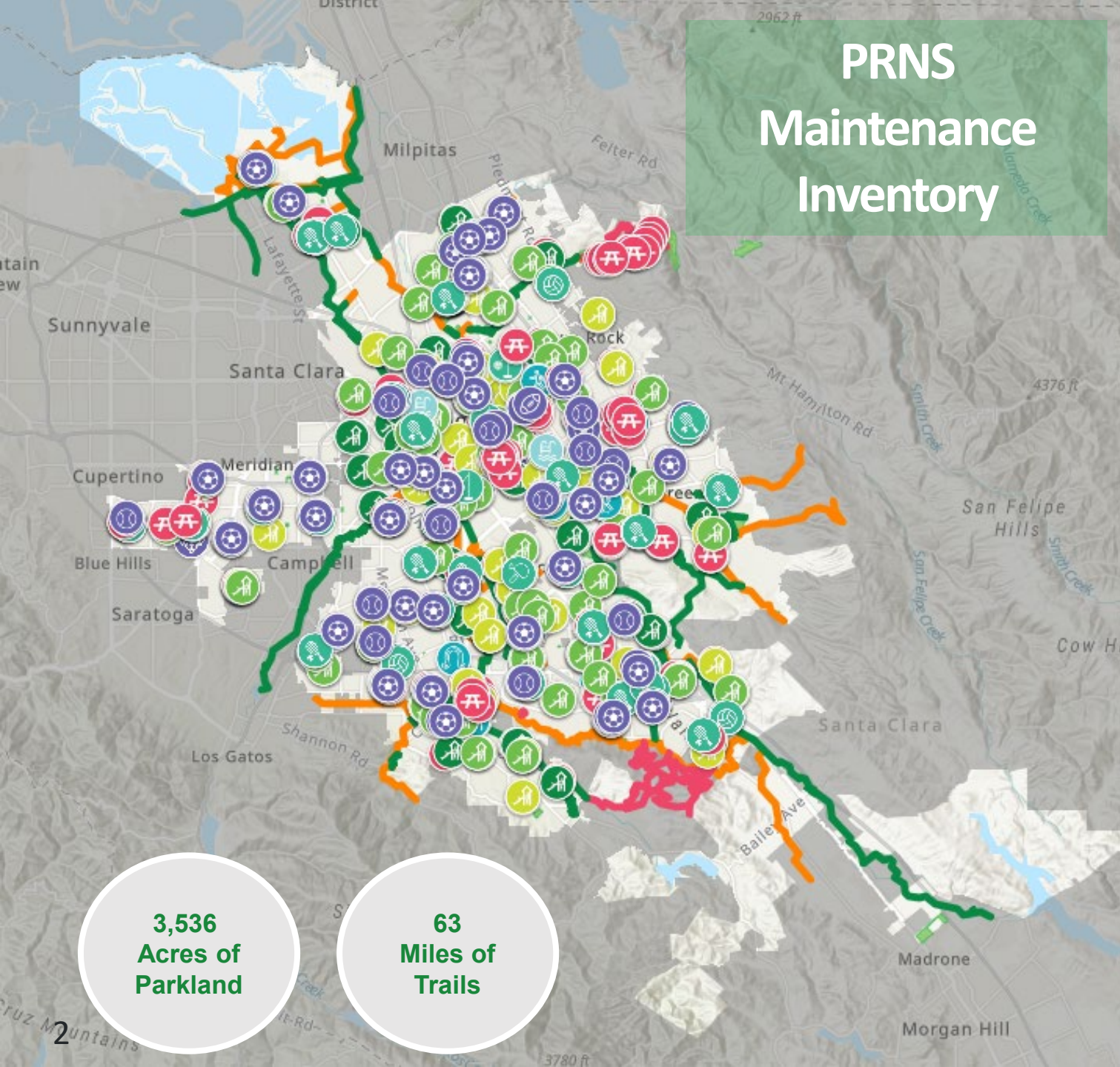
SAN JOSE
PARKS, RECREATION &
NEIGHBORHOOD SERVICES

City-Wide Sustainable Park Maintenance

Neighborhood Services and Education Committee
February 10, 2022

Jon Cicirelli, Director
Avi Yotam, Deputy Director
Torie O'Reilly, Division Manager

PRNS Maintenance Inventory



| PARKS | 209 |
|---|-------|
| Neighborhood Parks | 199 |
| Regional Parks | 10 |
| 18-Hold Disc Golf Course | 1 |
| Ballfields (baseball, softball, soccer) | 110 |
| Basketball Hoops | 159 |
| Bike Parks | 2 |
| Bocce Ball Courts | 20 |
| Community Gardens | 19 |
| Community Garden Plots | 1,053 |
| Dog Parks | 14 |
| Exercise Courses | 40 |
| Futsal Courts | 3 |
| Golf Courses (Public) | 3 |
| Horseshoe Pits | 52 |
| Lawn Bowling Greens | 1 |
| Park Playgrounds | 291 |
| Pickle Ball Courts | 35 |
| Reservable Sports Fields | 77 |
| Roller Hockey Rink | 1 |
| Skate Parks | 7 |
| Swimming Pools | 6 |
| Tennis Courts | 84.5 |
| Volleyball Courts | 19 |

**3,536
Acres of
Parkland**

**63
Miles of
Trails**

What Guides Us?



Stewards to the
People of San José



Stewards to the
3,536 Acres of
Parkland



Stewards to the
Environment

APRIL 2021

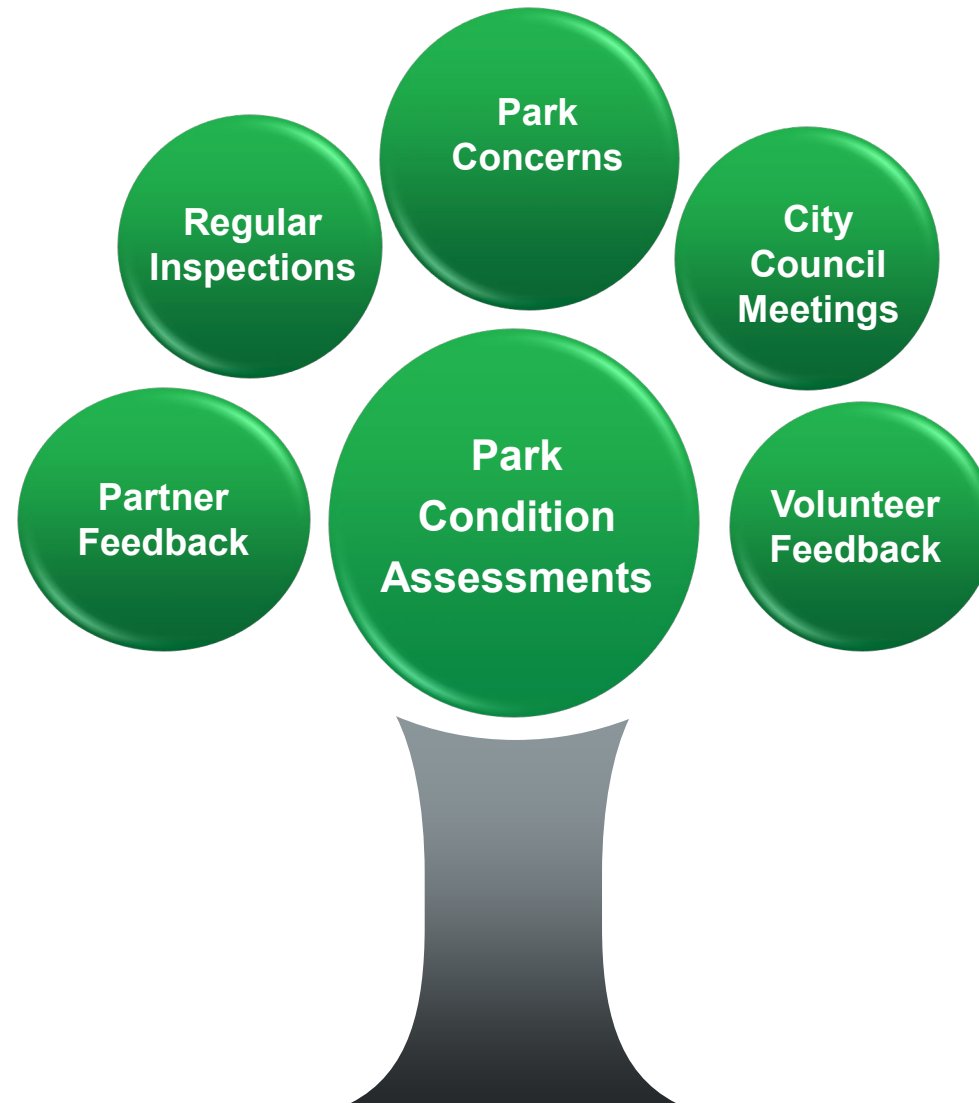
Park Maintenance Standards



Standards

- Each park amenity has a standard
- Each amenity is assessed in multiple ways
- Standards are measurable
- Standards are the same at all parks

Achieving Success Through Continuous Feedback



Park Condition Assessments

How it started

PARKS ASSESSMENT RATING SHEET

FACILITY: Backesto Park
 NAME: _____

For each category listed below, please MARK the appropriate response based on the entire park.
 Enter 2020 scores online <https://bit.ly/2Z63Alw>

| | Rating # 1: Unacceptable | Rating # 2: Needs Improvement | Rating # 3: Acceptable Condition | Rating # 4: Good | Rating # 5: Excellent | N/A |
|---------------------------|---|--|---|--|---|--|
| 1 GROUND | Overall Aesthetics (litter, graffiti, vandalism, cleanliness, odor): <u>1</u> | Overfilling garbage, litter and debris present throughout park, extensive graffiti and vandalism is observed, odor from garbage is present, and/or illegal dump present, tables and benches require deep cleaning or painting. | Concentrated areas of garbage are visible, some graffiti and vandalism is observed, odor from garbage is present, tables and benches require deep cleaning or painting. There may be an insufficient number of garbage cans present or some are in need of replacement. | Park is free of all but unconcentrated, tiny remnants of litter, no noticeable odor, tables and benches are suitable for public use, very little graffiti or vandalism observed. There may be an insufficient number of garbage cans present or some are in need of replacement. | Park is free of all but unconcentrated, tiny remnants of litter, no noticeable odor, tables and benches are in good condition and painted (free of staining), no graffiti or vandalism observed. Sufficient number of garbage cans are present. | Park is free of all visible litter and garbage, tables and benches are like new, no graffiti or vandalism. Sufficient number of garbage cans are present. |
| Comments | <u>There is overflowing garbage in most cans and litter everywhere.</u> | | | | | |
| 2 Turf Appearance: | <u>3</u> | 75% or more weeds, bare spots or brown patches. May include extensive gopher or squirrel activity. Gopher and/or squirrel program abatement necessary. | 50% or more weeds, bare spots, brown patches. May include extensive gopher or squirrel activity. | 25% - 50% weeds, bare spots, brown patches. Good condition overall. Playable. May include some gopher or squirrel activity. | 10% - 25% weeds, bare spots, brown patches. Very good condition. Turf is healthy. May include slight gopher or squirrel activity. | 10% or fewer weeds, bare spots, brown patches. No gopher or squirrel activity. |
| Comments | <u>Turf looks acceptable but has some weed issues that may need to be fixed in the near future.</u> | | | | | |
| 3 TREES | <u>3</u> | More than 20% of trees appear to be dead. Could be a potential fire hazard or near areas where people could be present. Trees have been impacted by amenities (i.e., walkways too close, tree well too small). | 10-20% of trees look unhealthy with some dead branches, may have insect infestation, or major corrective pruning needed. Trees have been impacted by amenities (i.e., walkways too close, tree well too small). | 5% of trees look unhealthy; needs pruning, no insects. May require corrective pruning to meet clearance requirements or require thinning. Trees have the potential to be impacted by amenities (i.e., walkways too close, tree well too small, etc.). | Trees appear healthy; good green color, no disease. May require structural or minor pruning to meet 8-foot clearance requirement. Tree and/or root system not impacted by nearby amenities. | Healthy looking, no dead branches, no apparent insect infestation, no obvious disease. Meets all clearance requirements (i.e., no branches within 8 feet of ground). Tree and/or root system not impacted by nearby amenities. |
| Comments | <u>There is some trees that may need some pruning soon as well as structural thinning.</u> | | | | | |

How it's going

Park Condition Assessment

▼ **Athletic Field Turf Assessment ***

Type of Fields *
 Complete a separate assessment for each applicable field type.

Softball Field

Number of Fields *
 Indicate the number of fields being assessed for the selected field type.

1

Cleanliness *
 Turf athletic fields are free of litter and debris. The standard allows for no more than 10 pieces of litter or debris, lightly scattered, visible in a 100' by 100' area. Unsafe litter is not acceptable.

Pass
 Fail

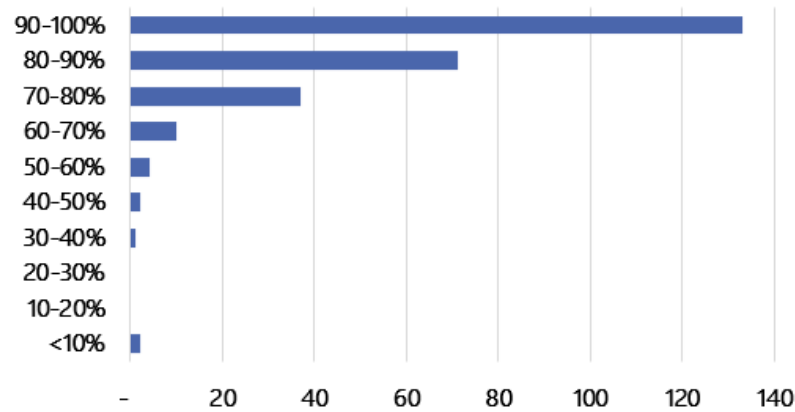
Weeds *
 Weed levels are below 10% of total turf area.

Pass

How Are We Doing?

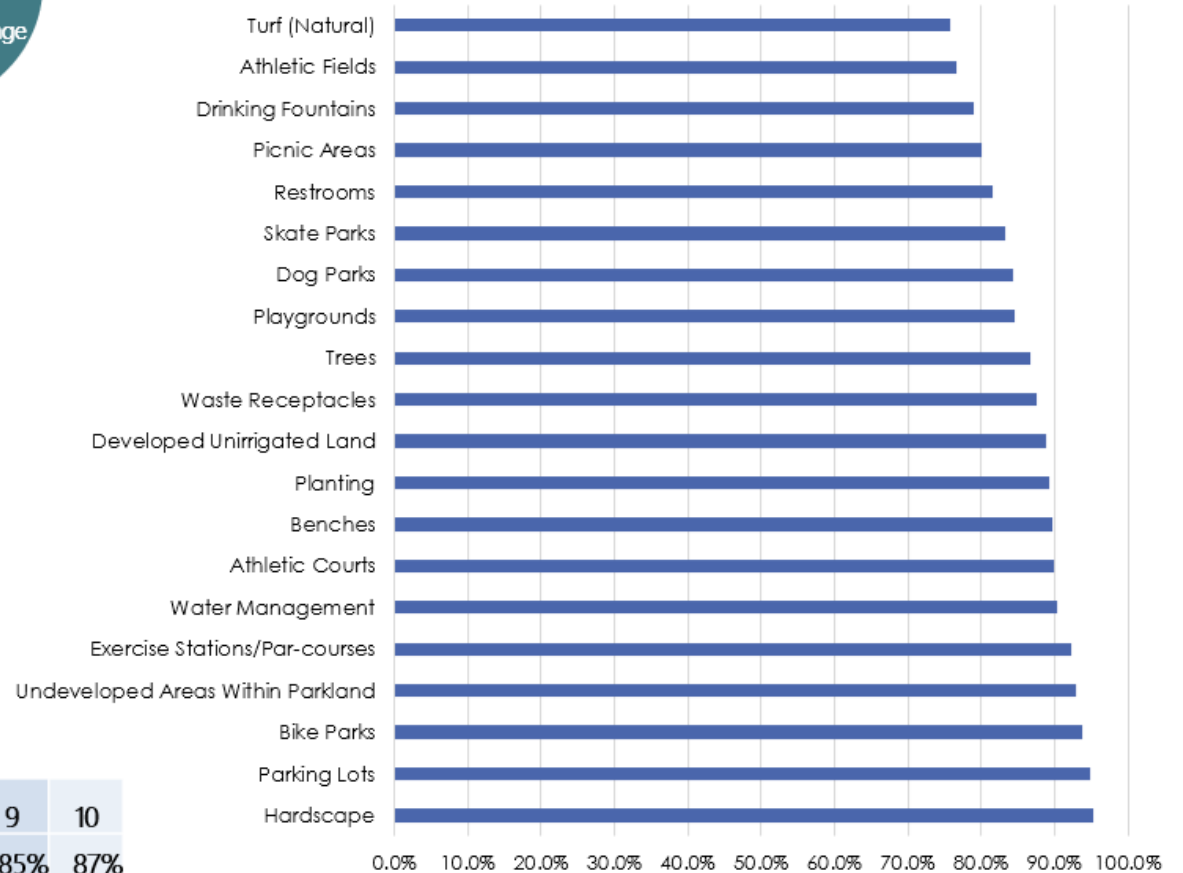


Number of Parks and Civic Grounds by PCA Score



| Council District | 1 | 2 | 3 | 4 | 5 | 6 | 7 | 8 | 9 | 10 |
|-------------------|-----|-----|-----|-----|-----|-----|-----|-----|-----|-----|
| Average PCA Score | 85% | 90% | 90% | 81% | 82% | 89% | 88% | 90% | 85% | 87% |

Average Score of Amenities

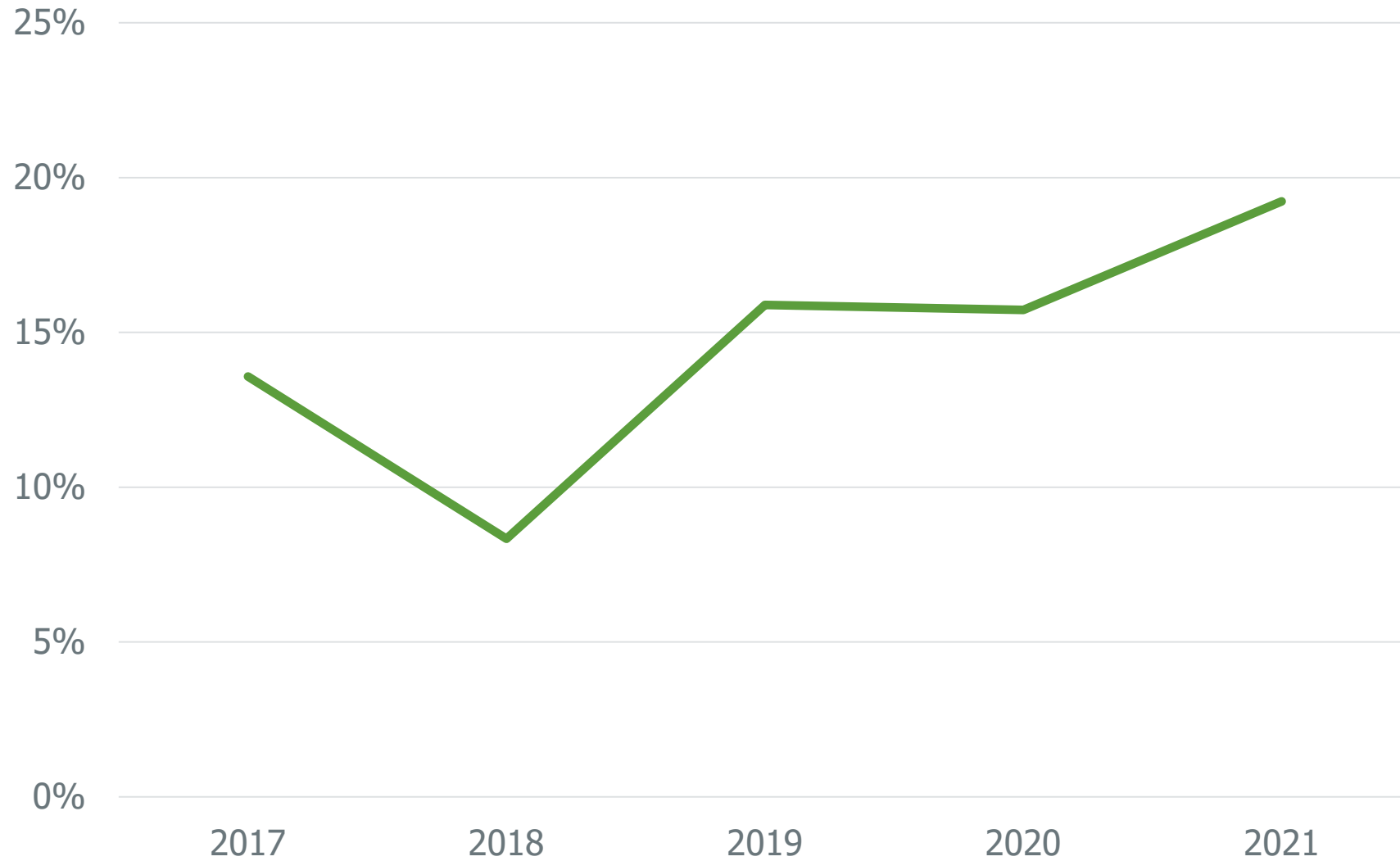




Challenges



Park Maintenance Vacancy Rate for Budgeted Full-Time Positions



Strategies for Success:

Maintenance Staff



SAN JOSE
PARKS, RECREATION &
NEIGHBORHOOD SERVICES



Building Community Through Fun

Strategies for Success:

Specialized Teams



Strategies for Success: Volunteers



Strategies for Success: Partnerships



SAN JOSE
PARKS, RECREATION &
NEIGHBORHOOD SERVICES



Building Community Through Fun

Park Stewardship:

Climate Resilience



Photo by G. Reyes, Bay Area News Group



SAN JOSE
PARKS, RECREATION &
NEIGHBORHOOD SERVICES



Building Community Through Fun



SAN JOSE
PARKS, RECREATION &
NEIGHBORHOOD SERVICES

City-Wide Sustainable Park Maintenance

Neighborhood Services and Education Committee
February 10, 2022

Jon Cicirelli, Director
Avi Yotam, Deputy Director
Torie O'Reilly, Division Manager