



(d) 2. Street Sweeping Overview

TRANSPORTATION & ENVIRONMENT COMMITTEE | DECEMBER 2, 2024

John Ristow
Director of Transportation

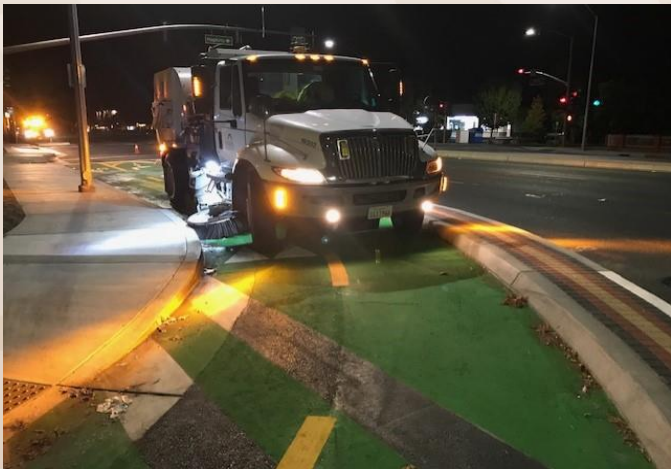
Jennifer Seguin
Deputy Director, DOT

Eric Hon
Division Manager, DOT

Arian Collen
Division Manager, DOT

Purpose of Street Sweeping

- Street sweeping is included as a best practice requirement in the Municipal Regional Stormwater Permit issued to San José and prevents pollutants from entering storm drains and waterways
 - Sediment
 - Nutrients (fertilizers and animal waste)
 - Toxic metals
 - Organic material
- Removes small collections of litter and debris that can build up in gutters to improve street aesthetics



Program Overview

Annual Curb Miles Swept by Program

City Crews

Frequency:

- Downtown - nightly
- Business Dist. – 2x/week
- Arterials/Connectors/Bikeways – 2x/month

Parking Restrictions

- 50% of routes (179 miles)

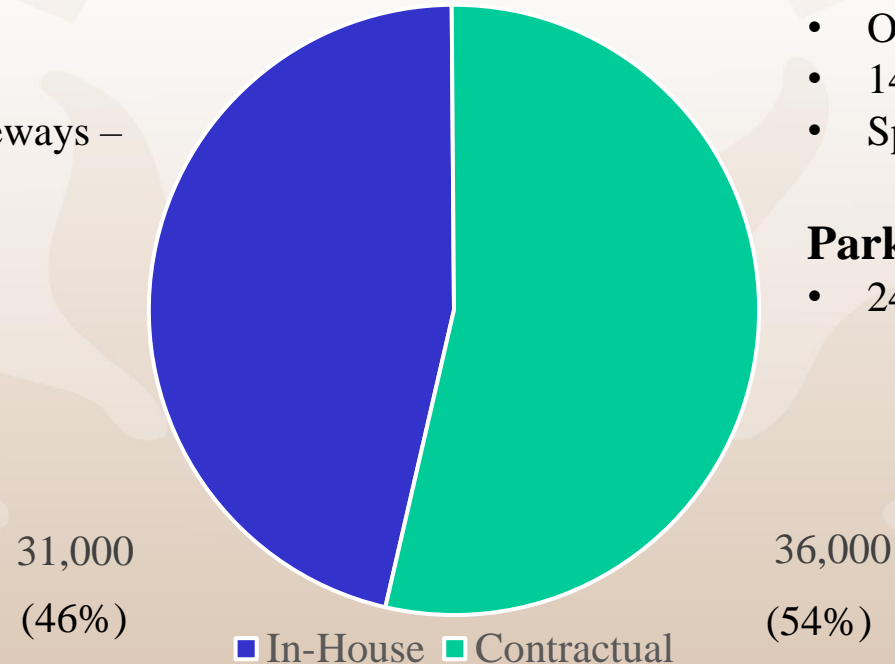
Contractor (Residential)

Frequency

- Once per month
- 14 enhanced sweeps/year
- Spot cleaning as needed

Parking restrictions

- 24% of routes (367 miles)



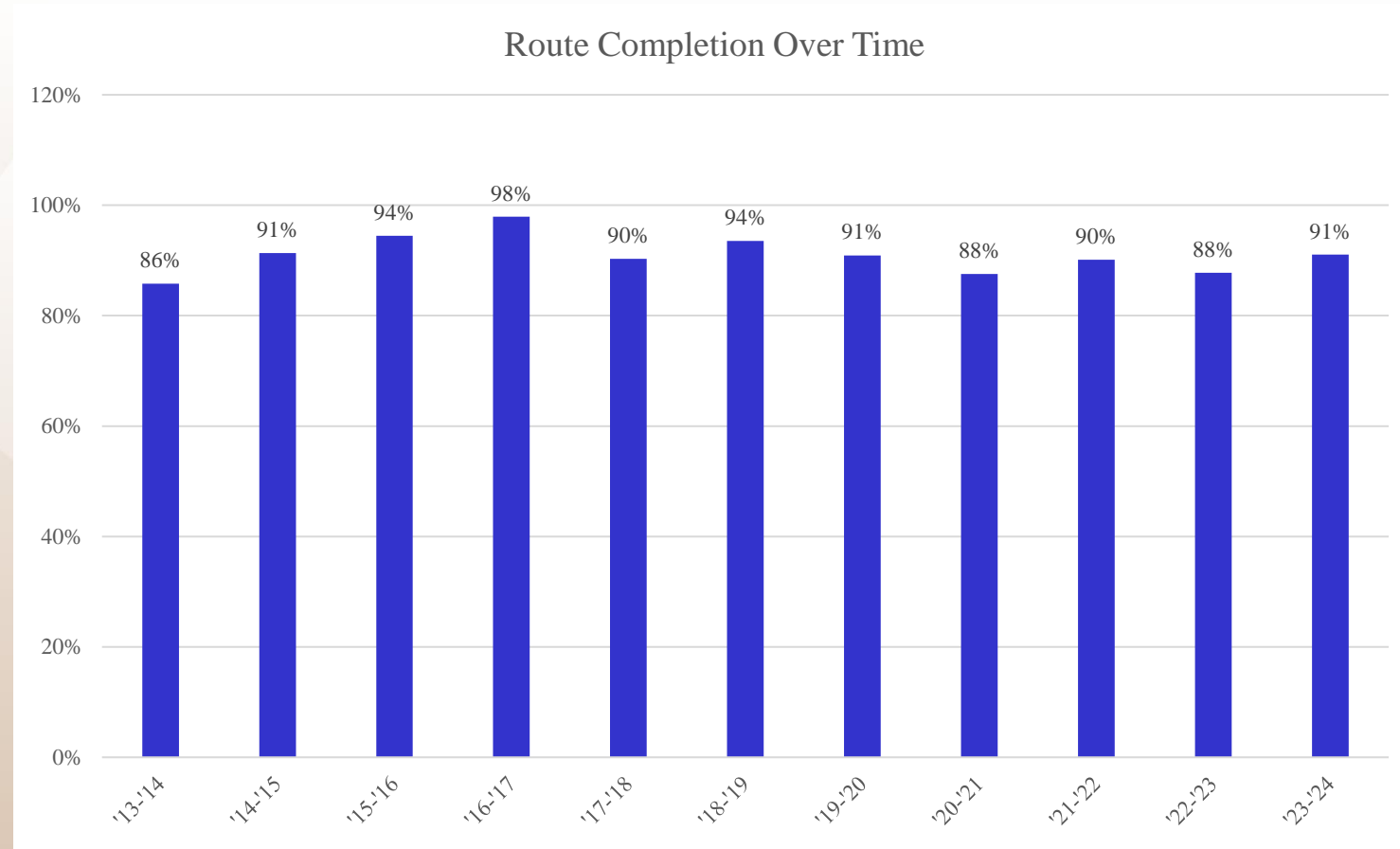
Route Completion Tracking

City Crews

- Route completion tracked daily via GeoTab
- Missed areas completed on Fridays

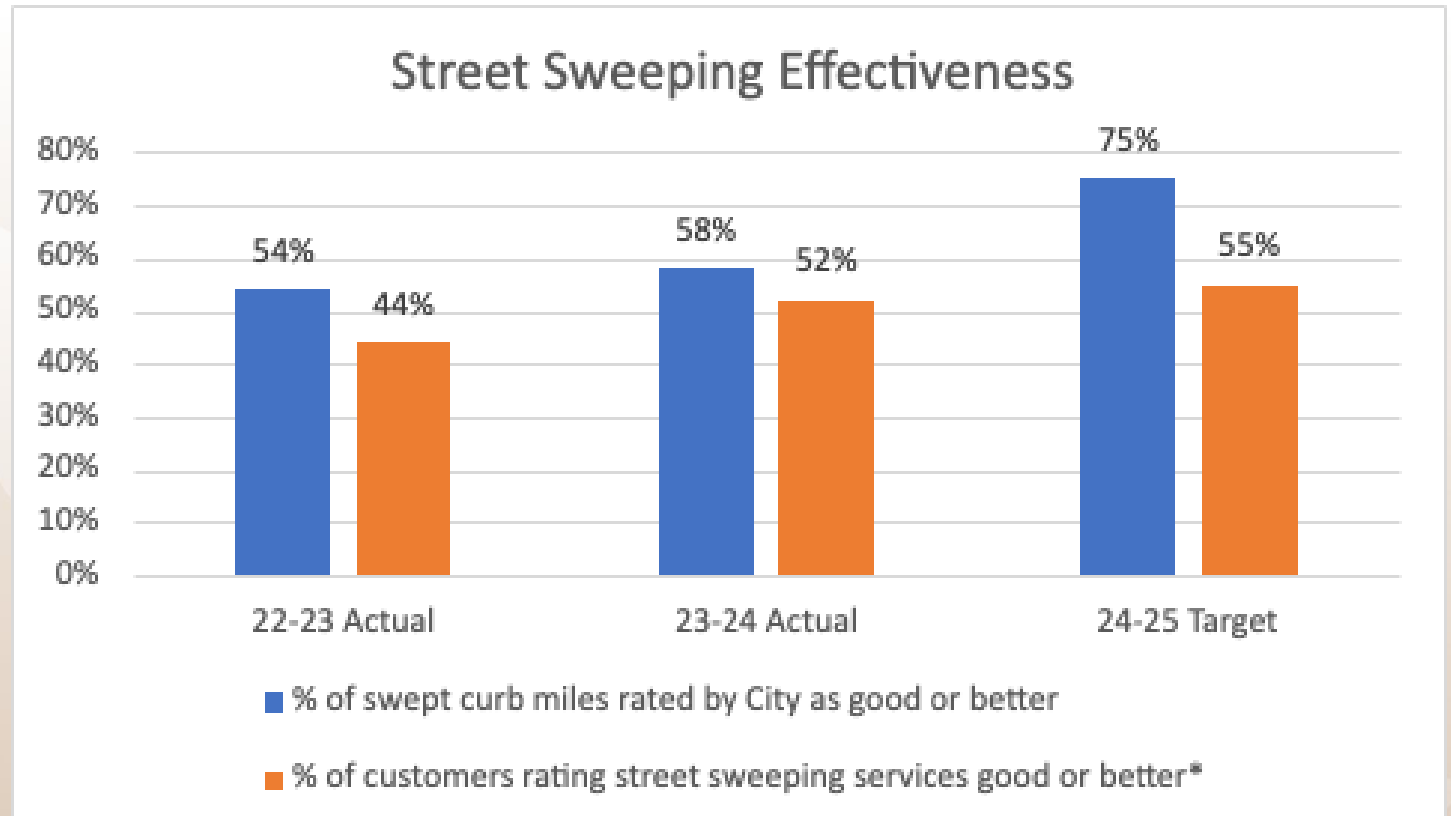
Contractor (Residential)

- Spot check with inspector
- Contractually obligated to complete every route



Core Service Measurement

- City inspector assesses sweeps
- Focus Area Survey results
- Based on 5-point scale
- Good or better rating based upon effectiveness and satisfaction with street appearance (4 or greater on a 1-5 scale)



- The Transportation Department collaborated with the City Manager's Office to use the Focus Area survey question 11f (rating cleanliness of residential streets and sidewalks clean + somewhat clean)..

Sweeping Barriers & Challenges

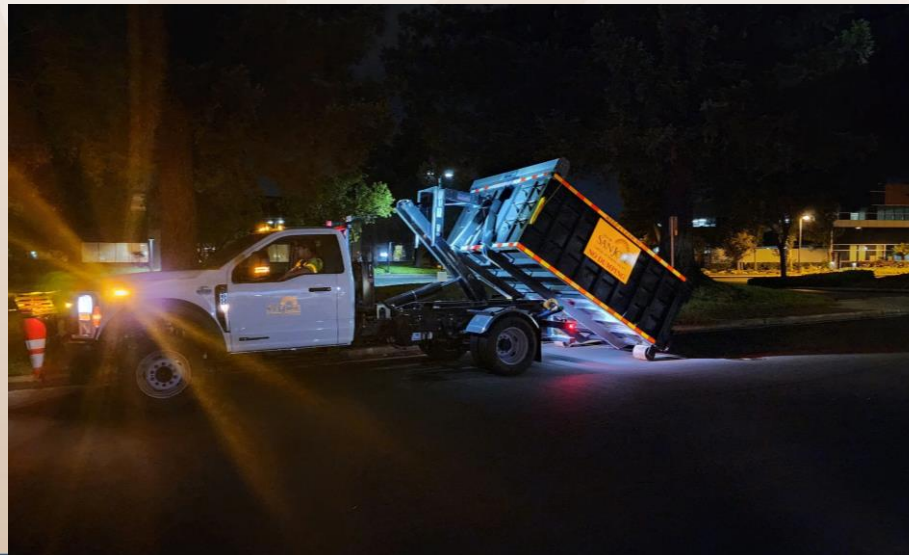


- Leaves and landscape debris piles
- Parked cars
- Low-hanging tree branches (14' clearance needed)
- Waste containers, cones, basketball hoops, boats



In-House City Crew

- Sweeper Operators employed by DOT
- City owns sweepers for downtown streets/bike lanes
- Routine sweeping and DOT sweepers respond to calls when needed
 - Debris in the street
 - Police & Fire emergency cleanup
 - Waste Bins Program Implemented!



Contractor Residential Street Sweeping (RSS)



- Sweepers Operators employed by GreenWaste, contractor owns sweepers
- DOT inspection staff assess effectiveness of contractual sweeping, respond to complaints and other sweeping obstruction issues
- Inspection staff coordinate enhanced sweeps and debris removal
- Track parking prohibition signage requests and verify parking impacts



Tracking and Communicating Trouble Spots

Inspectors utilize a tracking database to work with property owners on obstructions:

- **Parked Cars** – DOT leaves sweeping brochure and notifies Vehicle Abatement if the vehicle continues to not move or is inoperable
- **Tree Clearance** – Door hanger is left to encourage property owner to seek a pruning permit from DOT. If no action is taken, DOT will initiate the tree inspection
- **Obstructions in the Street** – Door hanger is left to encourage property owner to act. If no action is taken, DOT initiates the inspection and removal



District: 8.4 Swee

Driver:

CITY OF
SAN JOSE
CAPITAL OF SILICON VALLEY

Department of Transportation
Street Sweeping

SWEEPING OBSTRUCTIONS

Date: 10/18/23

To Property Owner:
1191

Your street sweeping day is:
3rd wed

Please remove the following obstruction from the street prior to your next sweeping day:

☐ Vehicles
☒ Garbage Cans
☒ Left Over Compost/Debris/Trash
☐ Basketball Hoops
☐ Cones
☐ Other:

Thank you for your cooperation. Working together we can keep San José clean.

For further information, please call:
(408) 794-1920

Street Sweeping
1404 Mabury Road
San José, CA 95133
(408) 794-1920
ResidentialStreetSweeping@sanjoseca.gov

Costs to Add 100 Miles of Street Sweeping Signs

Parking Prohibition Signage (fab & install)	\$785,000
Parking Compliance Vehicles x 3	\$150,000
Parking Compliance Unit Equipment	\$50,000
One Time Total	\$985,000
Additional Inspection staff	\$195,000
Sweeping Vendor Cost Increases	\$3,700
PCU Staff (3 Officers & 1 Supervisor).	\$800,000
Ongoing Cost Total*	\$998,700

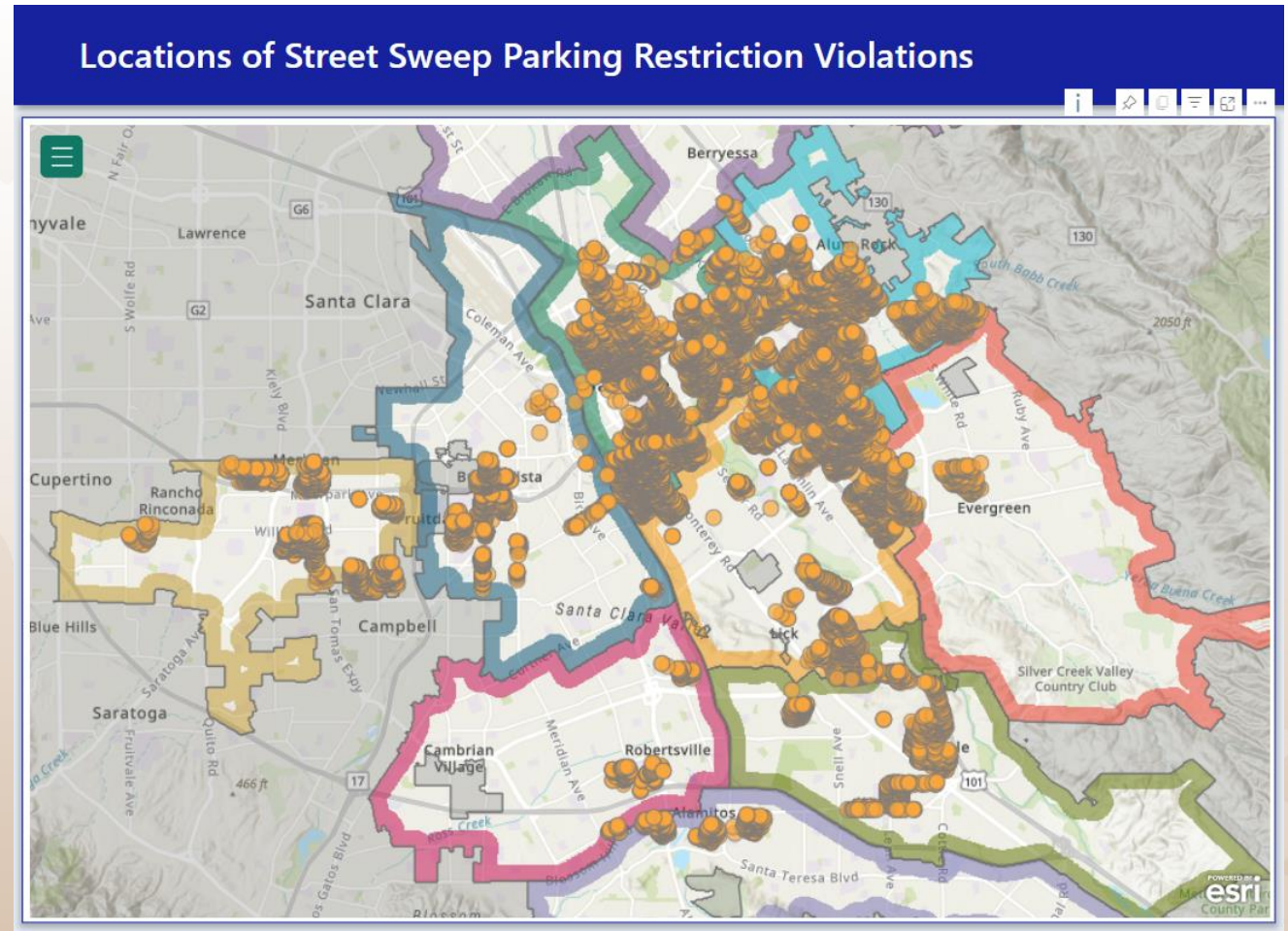
Parking Enforcement Activities

Signed Street Sweep Restrictions:

- 546 miles
- 100 unique sweep zones
- 13.2% of curb miles

FY 23-24 Street Sweep Violations:

- Enforcement Method: citations
- 66,000+ citations issued to 45,000 vehicles
- 90% of vehicles cited 2 or fewer times
- 1.3% of vehicles cited 6 or more times
- Approximately 72% of citations were issued in areas with high Equity Atlas scores (8, 9, and 10)



Enhanced Sweeps

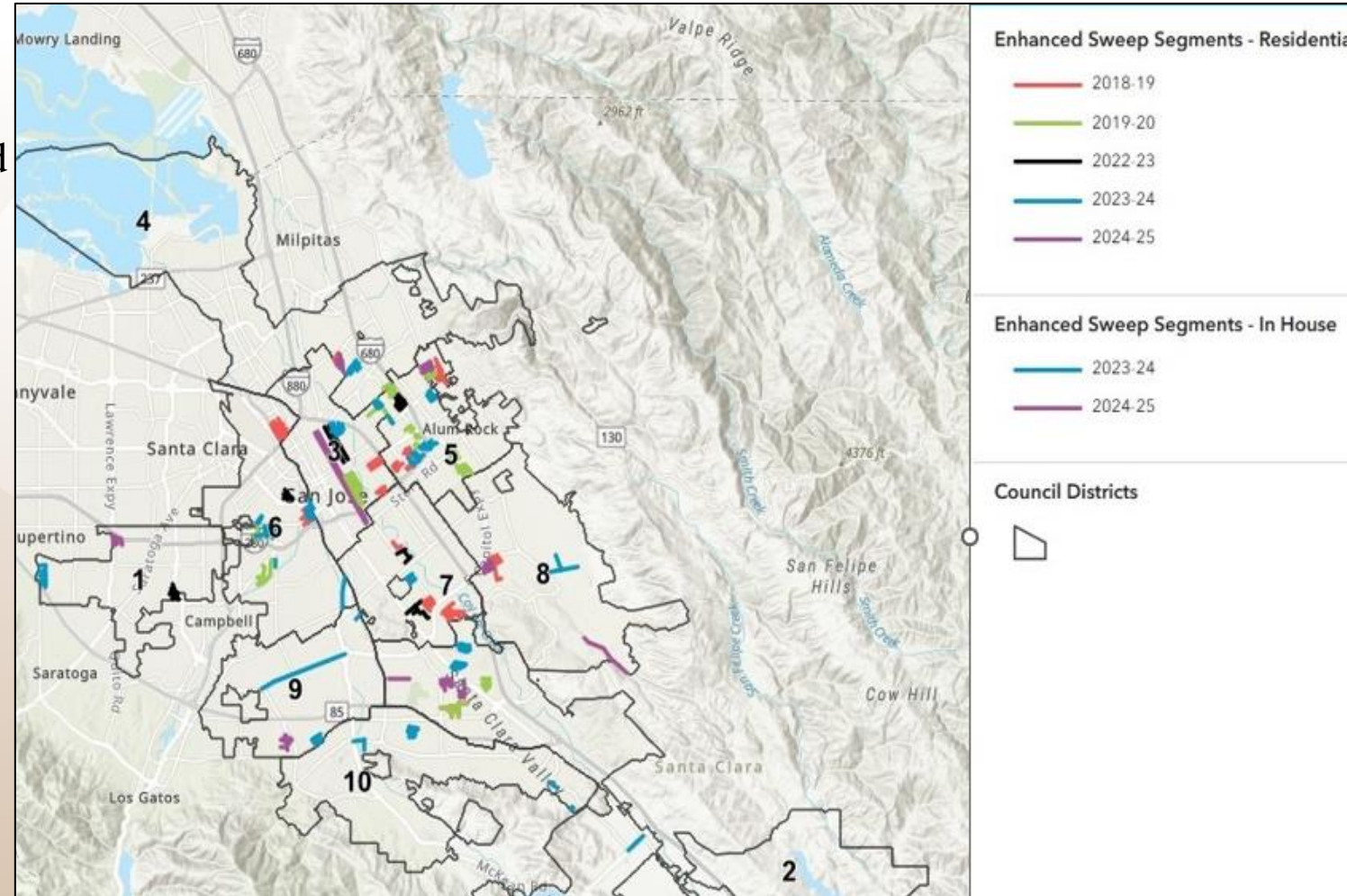
Operations

Areas of approx. 2-3 miles length that need effective sweeps

- Establish temp tow-away zones
- PTCO's and Inspectors work with residents to ensure clear curbs
- PTCO's facilitate towing as last resort
- ~ 1 per month with RSS

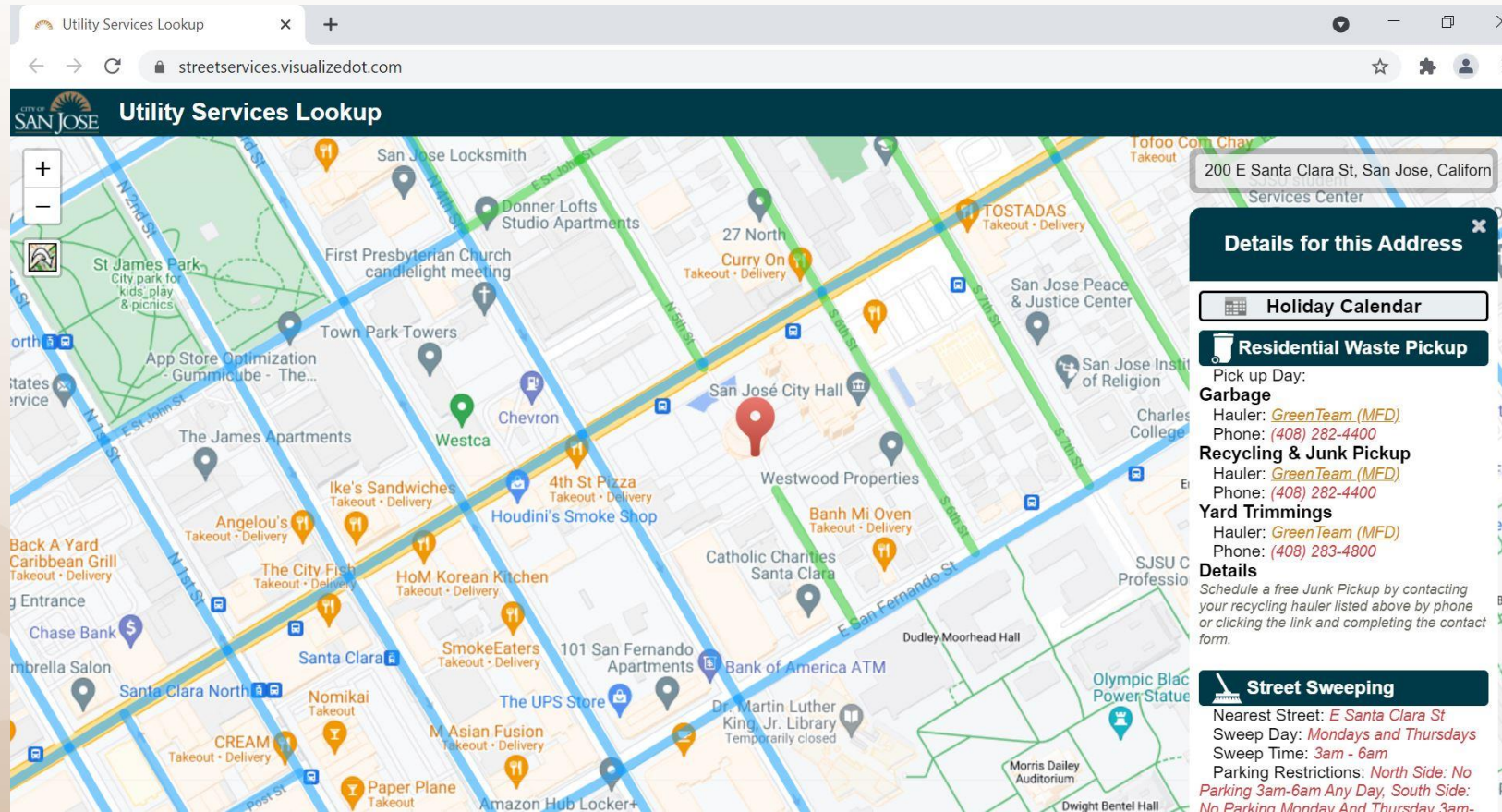
Contractual and In-House

- Greenwaste can provide up to 16
 - Funded for 14
- In-house as needed
- Suspended during much of COVID



Sweeping Lookup Tool

Residents and businesses can look up their sweep day at:
www.sjenvironment.org/lookup (ESD website)





(D) 2. Street Sweeping Overview

TRANSPORTATION & ENVIRONMENT COMMITTEE | DECEMBER 2, 2024

John Ristow
Director of Transportation

Jennifer Seguin
Deputy Director, DOT

Eric Hon
Division Manager, DOT

Arian Collen
Division Manager, DOT