

# (D) 5. Shoreline Levee and Sea Level Rise Status Report

Transportation & Environment Committee  
April 7, 2025



**Environmental Services**  
Jeff Provenzano  
Director

**OEDCA**  
Kevin Ice  
Director of Real Estate

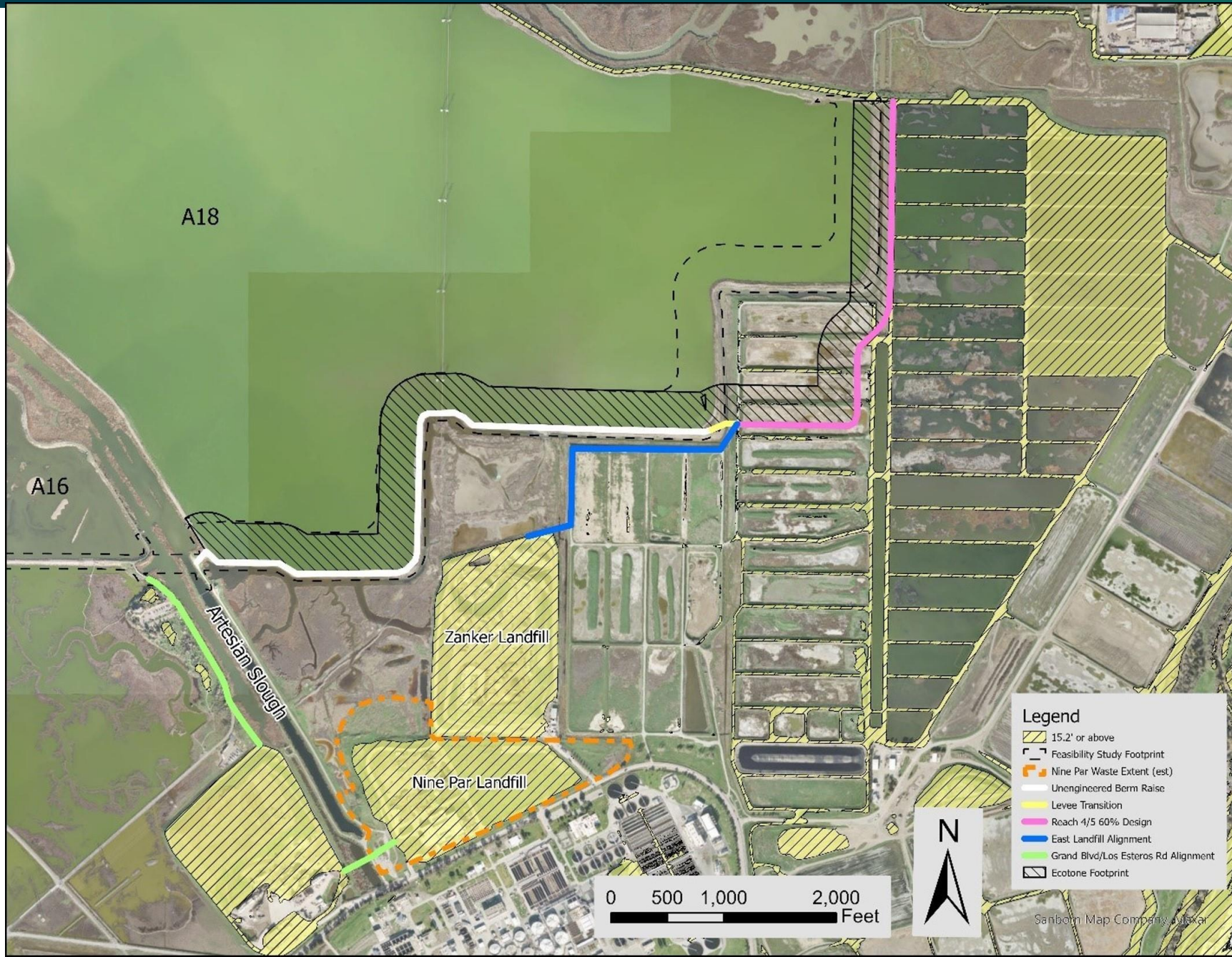
- **South San Francisco Bay Shoreline Project**
  - Provides 100-year coastal flood risk management for Alviso, parts of North San José, and critical infrastructure.
  - Restores ~2,900 acres of former salt pond to tidal marsh habitat.
  - Provides connection for the Bay Trail.
- **Project managed by United States Army Corps of Engineers (USACE) as Project Sponsor**
  - Santa Clara Valley Water District (Valley Water) is local non-federal sponsor.
  - CA State Coastal Conservancy is a sponsor, managing the project's habitat restoration aspects.
- **Regional Wastewater Facility owns land that the Project must acquire**
  - Staff have been collaborating with the project sponsors and engaged in the process since inception.

# Background

- USACE paused work on project in September 2021 due to projected cost escalations
- The City lobbied with Valley Water and partners to secure \$91M in additional federal funds in February 2023.
- USACE performing a value-engineering exercise to reduce the cost of the project.
- If the project does not proceed, the RWF must construct its own levee, which wouldn't protect Alviso or North San José.



# Value Engineering Proposed Realignment



# Project Status and Roadmap

- **City and Valley Water executed a non-binding Letter of Intent outlining transaction.**
- **City and Valley Water now preparing a binding MOU.**
  - Will be presented to the Treatment Plant Advisory Committee, the Santa Clara City Council, and the San José City Council for approval before execution.
  - Final item to resolve before MOU is design related to operation of the RWF outfall channel.
- **Key terms of MOU to include:**
  - Land transactions must be for fair market value.
  - Valley Water to pay for land interests with combination of cash or wetland mitigation credits.
  - Ensure the Project does not create liabilities for the RWF or disrupt operations.
- **Land transfer after USACE-VW Design & Construction Agreement, anticipated summer-2026.**

# Thank you!

Staff are available for questions.

Contact Information:

Kevin Ice – [kevin.ice@sanjoseca.gov](mailto:kevin.ice@sanjoseca.gov)

Jeff Provenzano – [jeff.provenzano@sanjoseca.gov](mailto:jeff.provenzano@sanjoseca.gov)

