

Fw: Use Councilmember Cohen's D2/10/6/9 Lines; reject voter suppression amendments

redistricting <[REDACTED]>

Mon 12/13/2021 12:08 PM

To: Agendadesk <[REDACTED]>

From: James Marshall <[REDACTED]>**Sent:** Monday, December 13, 2021 11:47 AM**To:** redistricting <[REDACTED]>**Subject:** Use Councilmember Cohen's D2/10/6/9 Lines; reject voter suppression amendments

[External Email]

Redistricting City San Jose,

As a San Jose resident, I am urging the City Council to draw our City's Electoral Map using Councilmember Cohen's proposed lines in South San Jose, Districts 2 and 10 and 6 and 9. We must reject Councilmember changes that suppress votes of communities of interest, including several proposed changes from the last City Council meeting. We must ensure all of our votes have equal weight, each of our voices equal stature, and each of our communities equal resources—creating a more equitable and just City for our Black, Latino, Asian and indigenous neighbors.

The proposed changes by City Council would preserve the voter suppression currently present along the D2 and District 10 boundary. And it would even make worse boundaries than our current map along District 6 and District 9. The State of California has given us new tools to advocate for a truly fair map in its passage of the 2019 Fair Maps Act. We should be listening to unheard communities of interest, instead of focusing so much on land and communities that already have a strong voice. I am worried that changes proposed by City Councilmembers could violate the Voting Rights Act, by breaking up communities of color in some of the most heavily Latinx, Asian, and Black neighborhoods.

The proposed changes for District 6 would: add more of the Willow Glen neighborhood and cut out the very diverse areas of Canoas Gardens, home to many Latino, Black and Asian working families and renters. This would reduce the Latino population in D6 by over 2% overall, our Black community by 12% (of the already small 4% in Cohen's map), and renters by 5%, amid a major housing crisis displacing all of our working families.

This Council rightfully talks a lot about the Housing Crisis, but this is an opportunity to act on our words by actually empowering renters to have a voice.

Additionally, the proposal by Councilmember Mahan to return to the previous district lines in D2 and D10 would be a significant blow to Black, Latino, and Asian voters and renters in South San Jose which continue to have their votes suppressed by current district lines. Mahan's proposal would bring together parts of Districts 2 and 10 that share little in common demographically. This means that we are not keeping together communities of interest.

An East/West District 2 and District 10 as proposed in Councilmember Cohen's map make much more sense. It ensures everyone has a voice in South San Jose compared to the current North/South lines proposed by Councilmember Mahan, which significantly dilute the voice of Latino, Asian, and Black voters and tenants in both D2 and D10.

Residents in the northern portions of these districts along I-85 have shared their shared economic, social and cultural needs including their interests as renters, interest in transit and transit oriented development opportunities, including a number of affordable projects. I-85 is a significant dividing line in terms of the character of our communities in South San Jose.

Please support Councilmember Cohen's proposed lines in South San Jose, Districts 2 and 10 and 6 and 9, instead of disrupting our communities and diluting votes of communities already struggling.

James Marshall



This message is from outside the City email system. Do not open links or attachments from untrusted sources.

Fw: Willow Glen redistricting

redistricting <[REDACTED]>

Mon 12/13/2021 12:41 PM

To: Agendadesk <[REDACTED]>

From: Allie <[REDACTED]>**Sent:** Monday, December 13, 2021 12:41 PM**To:** Taber, Toni <[REDACTED]> redistricting <[REDACTED]>**Subject:** Willow Glen redistricting

Some people who received this message don't often get email from [REDACTED] [Learn why this is important](#)

[External Email]

Hello,

I've been a resident to Willow Glen since 2015 and currently own two home here. I fully oppose the redistricting of D6 and urge the board to keep this community as is.

We were drawn to this area because of the history and the community. We were the first of our friends to move here, and since 2015 we have 4 other families who have moved near us.

Willow Glen is a community of interest, the neighborhood needs to stay together. Support the advocacy of WGNA. Please do not divide our neighborhood.

This message is from outside the City email system. Do not open links or attachments from untrusted sources.

FW: Unity Mapping Table Recommendations for 12/14: Redistricting

Roche, Megan <[REDACTED]>

Mon 12/13/2021 1:05 PM

To: Agendadesk <[REDACTED]>

From: Jeffrey Buchanan <[REDACTED]>**Sent:** Monday, December 13, 2021 1:03 PM**To:** The Office of Mayor Sam Liccardo <[REDACTED]> Jones, Chappie

<[REDACTED]> Jimenez, Sergio <[REDACTED]> Peralez, Raul

<[REDACTED]> Cohen, David <[REDACTED]> Carrasco, Magdalena

<[REDACTED]> Davis, Dev <[REDACTED]> Esparza, Maya

<[REDACTED]> Arenas, Sylvia <[REDACTED]> Foley, Pam

<[REDACTED]> Mahan, Matt <[REDACTED]> City Clerk

<[REDACTED]> Roche, Megan <[REDACTED]>

Subject: Unity Mapping Table Recommendations for 12/14: Redistricting

[External Email]

Mayor and Council:

On behalf of Silicon Valley Rising Action and the partners of the Unity Mapping Table, I would like to submit the following recommendations:

- 1 **Please amend the "Council Map" to adopt a boundary between District 6 and District 9 as proposed in the "Cohen Map" and keeping Canoas Gardens together.** The "Council Map" boundary between District 6 and District 9, thanks to CM Davis's amendment on 12/7, unnecessarily targets Asian, Black and Latino working families, cracking these minority voters out of District 6 and into District 9 (the most densely White district in the City), in order to pack in more voters from one of the most densely white parts of the City of San Jose into District 6. This also unnecessarily divides Canoas Gardens neighborhood down Curtner, a neighborhood which shares a community of interest with the rest of District 6. Moving the D6/D9 line in the "Council Map" to align with the Cohen Map's drawing of the line would increase the voices of communities of color by over 8% in District 6.
2. **Please oppose amendment by CM Matt Mahan to revise District 2 and District 10 boundaries, and support the lines in the "Council Map" (as revised 12/9).** The Council Map addresses past efforts to suppress the votes of Asian, Black and Latino voters in the north of District 10 (where 44% of the Citizen Voting Age population is White) and District 2 (where a far smaller 30.2% of CVAP is White). By creating districts that run north and south,

communities of interest are better represented, and past voter suppression efforts are addressed. To maintain this change, it may require a slight swap of population from D9 to D10 for balancing deviation

3. **Support a final map that enhances the voices of underrepresented Asian, Black and Latino voters across the City.** Since there has been some misinformation spreading around about the various maps under consideration by Council throughout the process, and their impact on the voice of various racial and ethnic groups in aggregate, I wanted to share a summary chart of population and Citizen Voting Age Population of: 1) the current lines, 2) the three maps supported by the Redistricting Commission (Unity, Community and Commission), and 3) the “Council Map” (revised as of 12/9)

While each map has varied impacts on different racial and ethnic groups in various districts, its important to note that only the Community and Commission maps actually decreased the voice of any non-white racial or ethnic voting group on average compared to today. The Unity Map, put together by civil rights, community and labor groups by comparison, increased the voice of each of the Asian, Black, and Latino communities (individually and in aggregate) more than any other map. The current version of the Council Map appears to fall somewhere between the Unity Map (the high point) and the Commission Map/Community Map (the low points) in terms of the share of Asian, Black and Latino Citizen Voting Age Population in Districts on average compared to the current map.

Any changes the Council makes to the “Council Map” moving forward should enhance the voices of Asian, Black, and Latino voters in our most diverse districts, rather than further dilute their voices going forward. As a City where the non-Hispanic White population represents only 23% of the population, we still have lines drawn to protect majorities of White voters in three districts, thanks in part by past voter suppression efforts. Moving forward we must enhance the voice of all communities of color where possible, especially in Districts 2 and 6 where we can do so without setting any racial or ethnic group against one another.

Please see the attached supporting documents:

- A side-by-side summary table of the population and CVAP of the current district map, the Unity Map, Community Map, Commission Map and Council Map
- A map of the proposed D6/D9 district lines referenced in #1 overlaid with the Council Map and current district lines.
- A memo detailing recommendations #1 and #2 above.

Please let me know if you have any additional questions

Best,
Jeffrey

Jeffrey Buchanan
Director of Policy
Silicon Valley Rising Action
[REDACTED]

This message is from outside the City email system. Do not open links or attachments from untrusted sources.

MEMORANDUM

TO: MAYOR AND COUNCILMEMBERS

FROM: JEFFREY BUCHANAN, SILICON VALLEY RISING ACTION

SUBJECT: RECOMMENDATIONS FOR PROPOSED REDISTRICTING LINES

DATE: 12/11/2021

In order to ensure a map that uplifts the voices of communities of color, renters and working families rather than continues or furthers the suppression of their votes, we encourage the Council to take the following actions:

- 1) Amend the District 6/District 9 line to ensure voices of Black, Latino and Asian voters and renters in Canoas Gardens are not suppressed, by using the line as proposed in Councilmembers Cohen’s Map or similar.
- 2) Oppose Councilmember Matt Mahan’s proposed amendment to the Council Map returning district lines in Districts 2 and 10 to an alignment that suppress Black, Latino and Asian voters.

1) Amend the “Council Map” District 6 and 9 line to prevent “Cracking” of Black, Brown and Asian Voters and “Packing” of White Voters:



Figure 1: Foley/Davis Amendment



Figure 2: SVRA Proposed Change

Figure 3: District 6 Population by Race/Ethnicity

District 6/9 Lines	Asian	Black	Latino	White	Asian/Black/Latino Coalition
Davis/Foley	17.60%	3.70%	31.20%	41.10%	52.50%
Cohen	18.20%	4.10%	33.30%	38.20%	55.60%
Difference	0.60%	0.40%	2.10%	-2.90%	3.10%

Figure 4: District 6 Citizen Voting Age Population by Race/Ethnicity

District 6/9 Lines	Asian	Black	Latino	Asian/Black/Latino Coalition
Davis/Foley	12.10%	3.90%	22.20%	38.20%
Cohen	13%	4.60%	23.50%	41.10%
Difference	0.90%	0.70%	1.30%	2.90%

The lines between District 6 and District 9 in the Council Map, amended on Wednesday 12/8 by Councilmember Foley and further modified by Councilmember Davis, appear to be engaging as what Voting Rights Act analysis calls “cracking”, or fragmenting of an area densely populated by minority groups in order to dilute the votes of these groups. As a result, they reduce the combined voting influence of Asian, Black and Latino voters by more than 7% overall compared to the Cohen Map, including reductions of 15.2% for Black voters, 5.5% for Latino voters and 6.9% for Asian voters!

District 9 has the largest majority White Citizen Voting Age Population of any district in the City. Adding Asian, Black or Latino voters into District 9 would make it much less likely voters from these racial and ethnic groups could have their say in electing a Councilmember of their choice.

Councilmembers Foley and Davis’s proposal for a District 6/9 boundary would move the the densely Black, Latino and Asian area of Canoas Gardens from Curtner south into District 9, moving an area primarily of renters from District 6. By sending densely Latino, Asian and Black area of Canoas Gardens to District 9, the least diverse district in the entire City of San Jose, these moves further marginalize and already highly marginalized group of voters. Additionally, the move appears to be breaking up a community of interest in Canoas Gardens, dividing it into two Districts, split down Curtner, in violation of the Fair Maps Act.

At the same time as this move is cracking up minority voters, its also further “packing” White voters into District 6, adding back more of the most densely white areas in the entire City by bringing more of South Willow Glen neighborhood into District 6, a move which even further dilutes Latino and Black voters’ and renters voices.

Figure 5: District 6/9 Border, Council Map in Yellow, Cohen Map in Red, Current Lines in Green, Proportion of Asian, Black & Latino Population within 2020 Census Groups (in gradients of Green)



We would encourage the Council to adopt a line based on the proposal in the Cohen Map, though it appears the Cohen map have left out a few Census Blocks in the south of Canoas Gardens. The red line in the map above shows how the line of the Cohen map could be slightly altered to come into compliance with the Fair Maps Act (and ensure changes to D6 within the Council Map do not create a deviation issue for the map overall.)

Recommendation #1: Adopt the line between District 6 and District 9 first proposed in the Cohen memo and make Canoas Gardens whole within District 6.

2) Retain “Council Map” District 2 and District 10 lines to address past efforts to dilute Black, Asian and Latino voters and renters.

Figure 6: Council Map (revised as of 12/9/2021)

Figure 7: Mahan Amendment

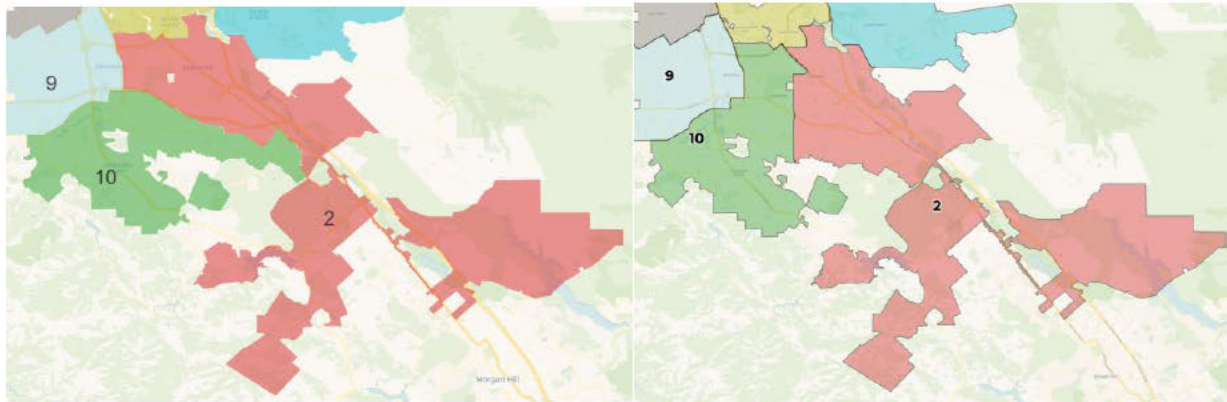


Figure 8: District 2 and 10 Population by Race/Ethnicity

Districts	Asian		Black		Latino		Other		Asian/Black/Latino Coalition	
	D2	D10	D2	D10	D2	D10	D2	D10	D2	D10
Council Map	33.6%	30.3%	3.90%	2%	35.8%	19%	26.6%	48.5%	73.3%	51.3%
Mahan Map	31.9%	32.9%	3.40%	2.5%	34.4%	21%	30.4%	44%	69.7%	56.4%
Difference	1.7%	-2.6%	0.5%	-0.5%	1.4%	1.7%	3.8%	4.5%	3.6%	-5.1%

Figure 9: District 2 and 10 Citizen Voting Age Population by Race/Ethnicity

	Asian		Black		Latino		Other		Asian/Black/Latino Coalition	
	D2	D10	D2	D10	D2	D10	D2	D10	D2	D10
Council Map	29.4%	24.4%	4.3%	2.5%	29.9%	15.6%	36.5%	57.8%	63.6%	42.5%
Mahan	27.2%	26.4%	3.3%	3.4%	28.9%	16.6%	40.6%	53.6%	59.4%	46.4%
Difference	2.2%	-2.0%	1.0%	-0.9%	1.0%	1.0%	4.1%	4.2%	4.2%	-3.9%

The proposal by Councilmember Mahan to return to a variation of the current district lines in D2 and D10 would be a significant blow to Black, Latino, and Asian voters and renters in South San Jose which continue to have their votes suppressed by current district lines.

The northern portion of the current District 2 (north of I-85 and Coyote Valley) shares much more in common with the northern portion of District 10 than either do with the populations of the Santa Teresa Foothills or Almaden Valley populated areas within the south of each district currently.

Throughout the redistricting process, community members have testified that Almaden Valley and Santa Teresa Foothills share a number of topics in common specific to more rural and suburban settings.

We've also heard from residents in the northern portions of these districts along I-85 about their shared economic, social and cultural needs including their interests as renters, interest in transit and transit oriented development opportunities, including a number of affordable projects. I-85 is a significant dividing line in terms of the character of our communities in South San Jose.

The demographic numbers bear this out. In fact, the northern parts of the current Districts 2 and 10 **share nearly identical proportions of Black, Latino, Asian, and White population, and a nearly equal share of renters to homeowners in the voting age population.**

But the South and North of these districts **diverge drastically**, with the populated southern portions of these districts having half the black population, 4 out of 10 fewer Latinos, and four times fewer renters represented as voters.

By placing Asian, Black and Latino voters in the North of the current District 10 into a district where more than 50 percent of the Citizen Voting Population is white, it is marginalizing the vote of each of these populations. By moving these populations to District 2, where White population is the minority of Citizen Voting Age population, it is giving each of these groups more say in their future.

Given this data, an East/West District 2 and District 10 as proposed in the Council Map would do more to ensure everyone has a voice in South San Jose compared to the current North/South lines proposed by Councilmember Mashan, which whether intentionally or unintentionally, significantly dilutes the voice of Latino, Asian, and Black voters and tenants in both D2 and D10 by cracking them out of a district alignment that keeps them together within their communities of interest.

Figure 10: Council Map (Yellow) vs Mahan Map (Red), Proportion of Asian, Black and Latino Population within 2020 Census Groups (in gradients of Green)

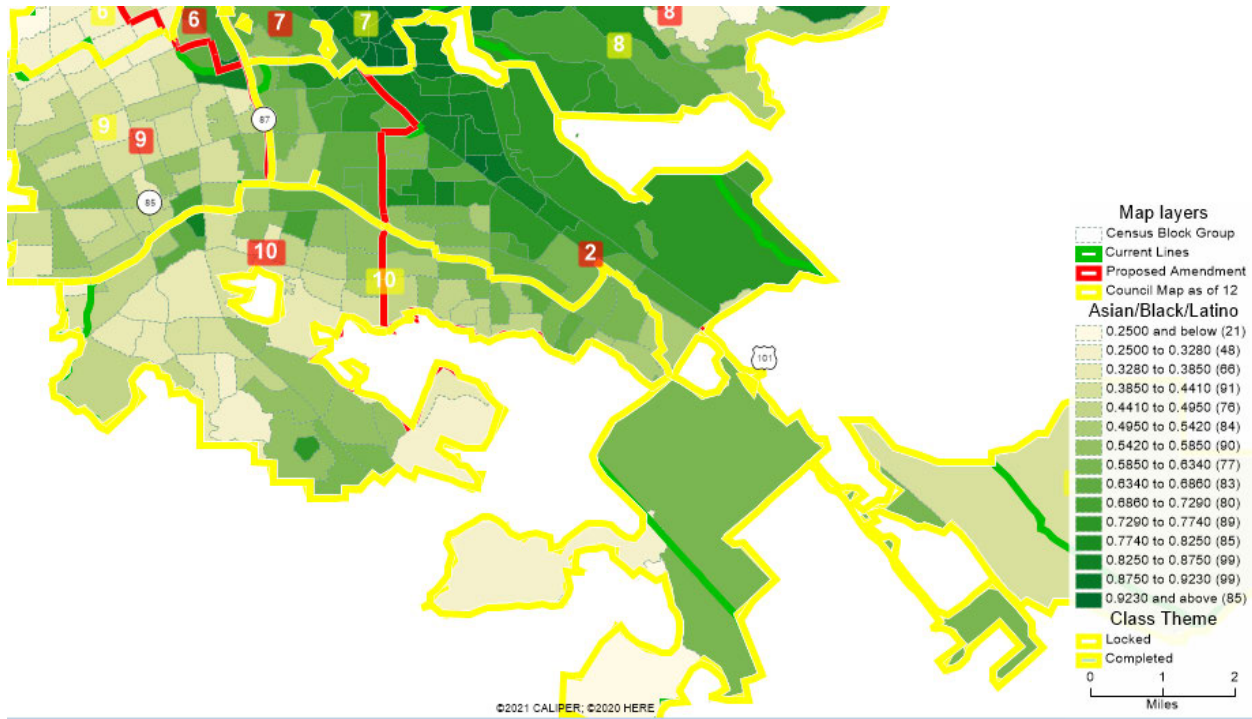


Figure 11: Analysis of North and South of South San Jose

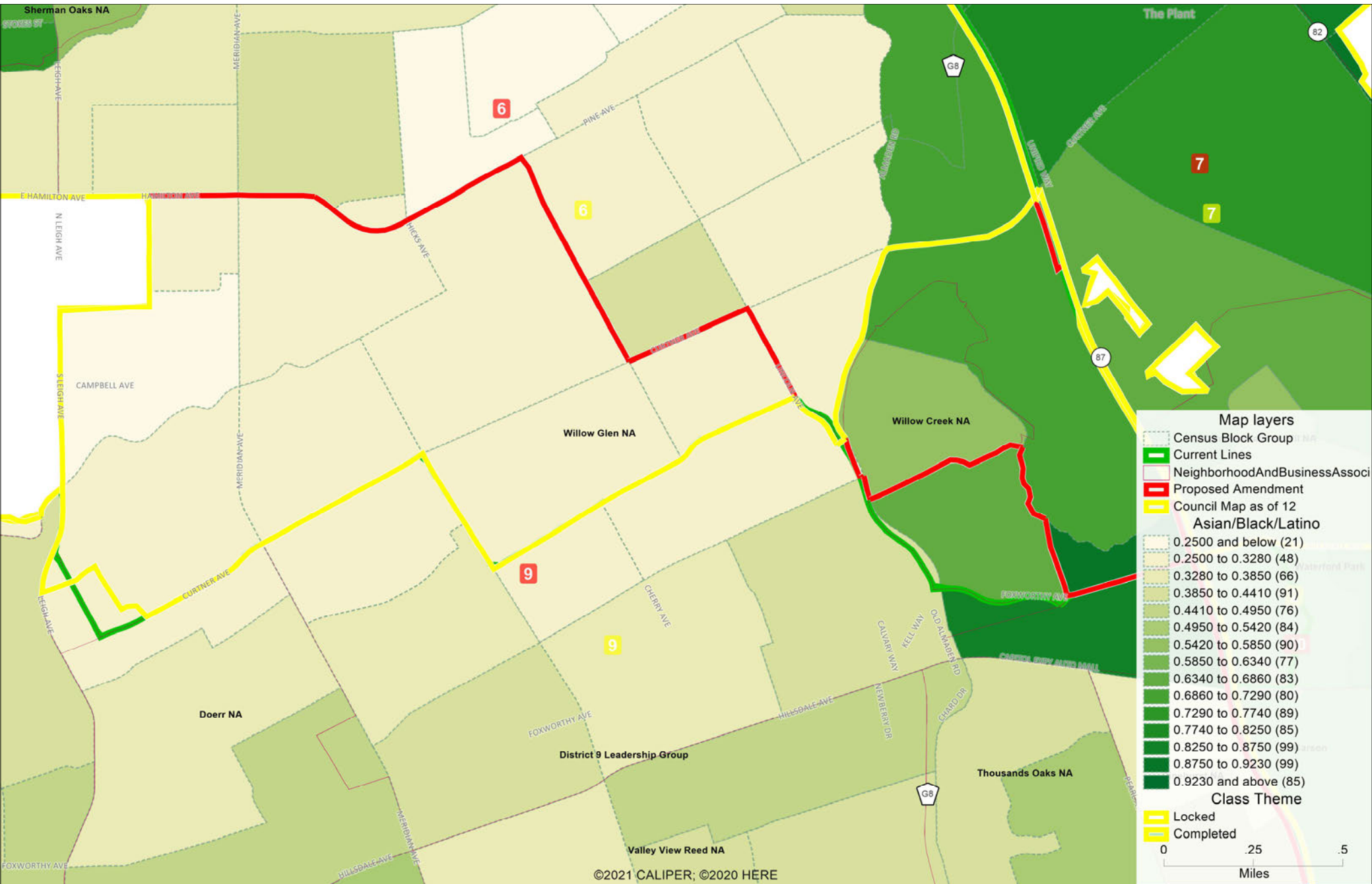
**Northern populated portion of current South San Jose Districts
(this population is all in the proposed D2 in Council Map)**

Black		Latino		Asian		White		Renter		Homeowner	
D10	D2	D10	D2	D10	D2	D10	D2	D10	D2	D10	D2
4%	4%	32%	38%	33%	33%	26%	19%	26%	27%	74%	73%

**Southern populated portion of current South San Jose Districts
(this population is all in the proposed D10 in Council Map)**

Black		Latino		Asian		White		Renter		Homeowner	
D10	D2	D10	D2	D10	D2	D10	D2	D10	D2	D10	D2
2%	2%	17%	26%	31%	27%	38%	43%	8%	6%	92%	94%

Recommendation #2: Please oppose the amendment by Councilmember Matt Mahan to amend the Council Map to return to the old district lines in Districts 2 and 10.



Population

	Asian					Black					Latino					Asian/Black/Latino Coalition				
	Current	Unity	Community	Commission	Council	Current	Unity	Community	Commission	Council	Current	Unity	Community	Commission	Council	Current	Unity	Community	Commission	Council
1	46.4%	46.2%	46.6%	46.4%	46.1%	3.1%	3.0%	3.0%	3.1%	3.0%	19.5%	19.3%	19.5%	19.5%	19.4%	69.0%	68.5%	69.1%	69.0%	68.5%
2	32.2%	33.1%	32.0%	31.9%	33.6%	3.4%	3.8%	3.4%	3.4%	3.9%	34.2%	36.6%	34.4%	34.4%	35.8%	69.8%	73.5%	69.8%	69.7%	73.3%
3	24.2%	29.8%	26.6%	28.3%	26.9%	3.8%	3.2%	3.8%	3.8%	3.8%	46.9%	45.6%	45.1%	42.8%	45.0%	74.9%	78.6%	75.5%	74.9%	75.7%
4	65.1%	64.2%	64.6%	64.5%	64.6%	2.2%	2.0%	2.0%	2.2%	2.0%	15.6%	16.3%	15.8%	15.9%	15.8%	82.9%	82.5%	82.4%	82.6%	82.4%
5	31.2%	32.1%	33.9%	33.4%	34.4%	1.8%	1.8%	1.7%	1.9%	1.8%	58.0%	57.4%	55.7%	55.9%	54.3%	91.0%	91.3%	91.3%	91.2%	90.5%
6	18.3%	20.9%	18.4%	16.9%	17.7%	3.6%	4.7%	3.4%	3.2%	3.7%	30.3%	34.3%	29.8%	31.8%	31.2%	52.2%	59.9%	51.6%	51.9%	52.6%
7	43.0%	42.2%	43.4%	41.1%	40.3%	2.5%	2.5%	2.4%	2.5%	2.4%	44.5%	45.3%	45.4%	47.1%	47.6%	90.0%	90.0%	91.2%	90.7%	90.3%
8	60.8%	61.3%	60.9%	61.0%	60.9%	2.1%	2.1%	2.1%	2.1%	2.1%	21.8%	21.6%	21.7%	21.8%	22.0%	84.7%	85.0%	84.7%	84.9%	85.0%
9	23.1%	20.9%	23.7%	23.7%	23.4%	2.4%	2.0%	2.8%	2.8%	2.7%	21.2%	19.6%	22.6%	22.4%	22.3%	46.7%	42.5%	49.1%	48.9%	48.4%
10	32.1%	30.4%	32.7%	32.3%	30.3%	2.5%	2.0%	2.5%	2.6%	2.0%	21.3%	18.7%	21.2%	21.4%	19.3%	55.9%	51.1%	56.4%	56.3%	51.6%
Average	38.3%	39.0%	38.9%	38.6%	38.7%	2.8%	2.8%	2.7%	2.8%	2.8%	32.4%	32.9%	32.2%	32.4%	32.6%	73.5%	74.6%	73.9%	73.8%	74.1%

Citizen Voting Age Population

	Asian					Black					Latino					Asian/Black/Latino Coalition				
	Current	Unity	Community	Commission	Council	Current	Unity	Community	Commission	Council	Current	Unity	Community	Commission	Council	Current	Unity	Community	Commission	Council
1	34.4%	34.2%	34.4%	34.4%	33.9%	3.4%	3.5%	3.4%	3.4%	3.9%	13.9%	13.6%	13.9%	13.9%	13.6%	51.7%	51.3%	51.7%	51.7%	51.4%
2	27.6%	30.1%	27.2%	27.2%	29.4%	3.6%	4.7%	3.5%	3.5%	4.3%	28.4%	29.0%	28.5%	28.5%	29.9%	59.6%	63.8%	59.2%	59.2%	63.6%
3	24.1%	29.7%	25.2%	27.0%	25.6%	4.9%	4.3%	4.9%	5.1%	5.5%	36.5%	35.9%	35.4%	33.3%	36.2%	65.5%	69.9%	65.5%	65.4%	67.3%
4	57.6%	56.4%	56.9%	56.9%	58.2%	3.1%	2.9%	2.9%	3.1%	3.4%	15.9%	16.5%	16.4%	16.3%	15.7%	76.6%	75.8%	76.2%	76.3%	77.3%
5	35.1%	35.9%	37.8%	36.9%	38.2%	2.6%	2.6%	2.5%	2.6%	2.5%	48.5%	47.9%	46.1%	46.7%	45.5%	86.2%	86.4%	86.4%	86.2%	86.2%
6	13.5%	15.5%	13.1%	12.4%	13.3%	4.4%	5.7%	4.3%	4.0%	4.6%	21.4%	25.5%	21.9%	23.2%	22.9%	39.3%	46.7%	39.3%	39.6%	40.8%
7	48.1%	47.5%	48.9%	47.0%	46.9%	2.5%	2.4%	2.5%	2.4%	2.2%	34.5%	35.2%	35.2%	36.6%	37.1%	85.1%	85.1%	86.6%	86.0%	86.2%
8	54.7%	55.0%	54.7%	54.9%	56.5%	3.0%	3.1%	3.0%	3.0%	2.6%	21.7%	21.5%	21.7%	21.6%	21.1%	79.4%	79.6%	79.4%	79.5%	80.2%
9	15.6%	14.1%	16.5%	16.5%	16.4%	2.4%	2.1%	2.9%	2.9%	3.0%	15.8%	14.8%	16.4%	16.3%	16.7%	33.8%	31.0%	35.8%	35.7%	36.1%
10	26.1%	22.7%	26.4%	26.3%	24.2%	3.7%	2.5%	3.7%	3.6%	2.5%	16.3%	15.7%	16.2%	16.2%	15.6%	46.1%	40.9%	46.3%	46.1%	42.3%
Average	34.5%	35.4%	35.0%	34.8%	35.4%	3.3%	3.5%	3.3%	3.3%	3.5%	26.3%	26.7%	26.2%	26.3%	26.4%	64.1%	65.5%	64.5%	64.4%	65.3%

Fw: Redistricting map of Willow Glen

redistricting <[REDACTED]>

Mon 12/13/2021 3:23 PM

To: Agendadesk <[REDACTED]>

From: La-La-Lander! <[REDACTED]>

Sent: Monday, December 13, 2021 3:22 PM

To: redistricting <[REDACTED]>

Subject: Redistricting map of Willow Glen

You don't often get email from [REDACTED] [Learn why this is important](#)

[External Email]

Please find my completed copy of the 'Document Your Community of Interest' regarding the redistricting map of Willow Glen, voting tentatively scheduled for 12/14/2021.

Do not change the district map to reflect the Dry Creek neighborhood of San Jose as Cambrian Park!

Sincerely,

--

Michael E. Brown

This message is from outside the City email system. Do not open links or attachments from untrusted sources.



Tell us about your community!

Help shape the future of City of San José's Council Districts

Every ten years, U.S. Census data is used to redraw City of San José City Council district boundaries. This ensures the districts are balanced for changes in population. The City Council wants to hear from you on how these boundaries should be drawn. Complete this form to tell the Commission about your **community of interest** – keeping communities of interest together is a high-ranking criteria in the redistricting process.

What is a Community of Interest?

A Community of Interest is a group of people in the same geographically definable area who share common social and economic interests. Some examples of Communities of Interest are:

- Senior citizens
- LGBTQIA+ communities
- College students living near campus
- People who live downtown or in a neighborhood
- Dog park community
- Residents who share a common language
- People that use the same transportation systems

What criteria will help the City Council understand the importance of your community in the redistricting process?

When answering the questions on the form, please keep in mind the following:

1. Does your community have a shared culture, characteristics, or bond?
2. Is your community geographic in nature? Is your community able to be mapped? Is there density within your community?
3. Describe your community's relationship with the County and how it is affected by policy decisions made by the City Council.

The public can submit any testimony, but it is important to remember that your input can be best used if it addresses all three of these questions.

What You Can Do to Further Participate in the Redistricting Process?

1. Provide your comments on your community of interest by completing this worksheet and return it by email to the City Clerk at redistricting@sanjoseca.gov or mail/drop off a hard copy to the City Council, 200 E Santa Clara Street, San José, CA 95113 or attend a public hearing and read your comments to the Redistricting Commission or City Council.
2. Attend one of the City of San José Redistricting Commission public meetings, times and locations to be publicized on the website. <https://www.sanjoseca.gov/your-government/appointees/city-clerk/redistricting-2020>



Email: redistricting@sanjoseca.gov



In person: Call 408-535-1260 to make an appointment



Mail: City Council,
200 E Santa Clara Street
San José, CA 95113

Questions or comments?

We want to hear from you. Email the City of San José City Council at redistricting@sanjoseca.gov or visit our webpage at <https://www.sanjoseca.gov/your-government/appointees/city-clerk/redistricting-2020>

Document Your Community of Interest

1. What are the common interests in your community? Describe how they are important:

The common interests in Willow Glen include St. Christopher's School; Presentation High School; Willow Glen Middle and Willow Glen High Schools and Wallenberg Park. Additionally, the established residential housing development north of Curtner Avenue, East of Meridian Avenue, traveling east to Alamden Road should remain as 'Willow Glen'.

2. Explain the geographical location of your community of interest. What are the physical boundaries?

The physical boundaries include Meridian Avenue to the west; Coe Avenue to the north; Curtner Avenue to the south and Alamden Road to the east.

3. What is the rationale for your community of interest to be used in the City Council redistricting process? Please describe how the issues before the City Council has an impact on your community.

The aforementioned neighborhood boundaries are part of the original 'Willow Glen' community, which was part of the 'incorporated city of Willow Glen' as early as early 1900's. Since annexation into San Jose, Willow Glen has a rich heritage of quality residential tract developments, offered limited commercial services, serving the local Willow Glen and bordering communities. Redistricting the southern portion of Willow Glen to Cambrian Park demonstrates a continuing eroding of the feeling of

4. What else would you like to tell us about your community?

The community of Willow Glen has been and continues to represent a quality of life and brings together like-minded property owner's, embracing early San Jose tradition in upholding a high quality of life and spirit.

Community of Interest Form

Providing the following information is optional. If you provide an email address, we will send you updates on the process.

First name: Michael Brown

Email: [REDACTED]

Which district do you live in? If you're not sure, write your address and we'll look it up:

District

[REDACTED]
District #6

SUBMIT

FW: Dividing Willow Glen

Taber, Toni <[REDACTED]>

Mon 12/13/2021 4:15 PM

To: Agendadesk <[REDACTED]>

From: Jim Pangburn <[REDACTED]>

Sent: Monday, December 13, 2021 4:01 PM

To: Taber, Toni <[REDACTED]>

Subject: Dividing Willow Glen

You don't often get email from [REDACTED] [Learn why this is important](#)

[External Email]

Hello Ms. Taber,

Please DO NOT divide Willow Glen.

Please KEEP existing District 6 boundaries. Support the advocacy of WGNA.

Thank you,

Jim Pangburn

This message is from outside the City email system. Do not open links or attachments from untrusted sources.

FW: District 6 boundaries

Taber, Toni <[REDACTED]>

Mon 12/13/2021 4:15 PM

To: Agendadesk <[REDACTED]>

-----Original Message-----

From: John F Ehrlich <[REDACTED]>

Sent: Monday, December 13, 2021 3:42 PM

To: Taber, Toni <[REDACTED]>

Subject: District 6 boundaries

[You don't often get email from [REDACTED] Learn why this is important at <http://aka.ms/LearnAboutSenderIdentification.>]

[External Email]

I will vote against anyone who votes to change the district 6 boundaries or who doesn't actively work to keep the existing boundaries.

John Ehrlich
Willow Glen

Sent from my iPhone

This message is from outside the City email system. Do not open links or attachments from untrusted sources.

FW: Do not divide Willow Glen

Taber, Toni <[REDACTED]>

Mon 12/13/2021 4:16 PM

To: Agendadesk <[REDACTED]>

From: Joe Castello <[REDACTED]>

Sent: Monday, December 13, 2021 3:20 PM

To: Taber, Toni <[REDACTED]>

Cc: [REDACTED]

Subject: Do not divide Willow Glen

Importance: High

You don't often get email from [REDACTED] [Learn why this is important](#)

[External Email]

"Please do not divide Willow Glen. Please keep the existing District 6 boundaries and do not move my street to the Cambrian District.

Thank you,
Joe Castello

[REDACTED]

[Joe Castello](#)

[REDACTED]

[REDACTED]

This message is from outside the City email system. Do not open links or attachments from untrusted sources.

FW: Willow Glen not Cambrian

Taber, Toni [REDACTED]

Mon 12/13/2021 4:25 PM

To: Agendadesk <Agendadesk@sanjoseca.gov>

-----Original Message-----

From: carol tapella [REDACTED]

Sent: Monday, December 13, 2021 4:23 PM

To: Taber, Toni [REDACTED]

Subject: Willow Glen not Cambrian

[You don't often get email from [REDACTED]. Learn why this is important at <http://aka.ms/LearnAboutSenderIdentification>.]

[External Email]

Please do not divide Willow Glen and keep the existing district 6 boundaries. Support the advocacy of WGNA. Thank you, Carol Tapella Sent from my iPhone

This message is from outside the City email system. Do not open links or attachments from untrusted sources.

FW: Mazzaglia Ave

Taber, Toni [REDACTED]

Mon 12/13/2021 4:43 PM

To: Agendadesk <Agendadesk@sanjoseca.gov>

From: Ernest Fama [REDACTED]

Sent: Monday, December 13, 2021 4:43 PM

To: Taber, Toni [REDACTED]

Subject: Mazzaglia Ave

You don't often get email from [REDACTED]. [Learn why this is important](#)

[External Email]

DO NOT MOVE MAZZAGLIA AVE into Cabrian district and divide Willow Glen!
Keep existing District 6 boundaries.

This message is from outside the City email system Do not open links or attachments from untrusted sources

FW: Use Councilmember Cohen's D2/10/6/9 Lines; reject voter suppression amendments

Taber, Toni [REDACTED]

Mon 12/13/2021 4:55 PM

To: Agendadesk <Agendadesk@sanjoseca.gov>

From: Elena Robles [REDACTED]**Sent:** Monday, December 13, 2021 4:48 PM**To:** Taber, Toni [REDACTED]**Subject:** Use Councilmember Cohen's D2/10/6/9 Lines; reject voter suppression amendments

[External Email]

City Clerk Toni Taber,

As a San Jose resident, I am urging the City Council to draw our City's Electoral Map using Councilmember Cohen's proposed lines in South San Jose, Districts 2 and 10 and 6 and 9. We must reject Councilmember changes that suppress votes of communities of interest, including several proposed changes from the last City Council meeting. We must ensure all of our votes have equal weight, each of our voices equal stature, and each of our communities equal resources—creating a more equitable and just City for our Black, Latino, Asian and indigenous neighbors.

The proposed changes by City Council would preserve the voter suppression currently present along the D2 and District 10 boundary. And it would even make worse boundaries than our current map along District 6 and District 9. The State of California has given us new tools to advocate for a truly fair map in its passage of the 2019 Fair Maps Act. We should be listening to unheard communities of interest, instead of focusing so much on land and communities that already have a strong voice. I am worried that changes proposed by City Councilmembers could violate the Voting Rights Act, by breaking up communities of color in some of the most heavily Latinx, Asian, and Black neighborhoods.

The proposed changes for District 6 would: add more of the Willow Glen neighborhood and cut out the very diverse areas of Canoas Gardens, home to many Latino, Black and Asian working families and renters. This would reduce the Latino population in D6 by over 2% overall, our Black community by 12% (of the already small 4% in Cohen's map), and renters by 5%, amid a major housing crisis displacing all of our working families.

This Council rightfully talks a lot about the Housing Crisis, but this is an opportunity to act on our words by actually empowering renters to have a voice.

Additionally, the proposal by Councilmember Mahan to return to the previous district lines in D2 and D10 would be a significant blow to Black, Latino, and Asian voters and renters in South San Jose which continue to have their votes suppressed by current district lines. Mahan's proposal would bring together parts of Districts 2 and 10 that share little in common demographically. This means that we are not keeping together communities of interest.

An East/West District 2 and District 10 as proposed in Councilmember Cohen's map make much more sense. It ensures everyone has a voice in South San Jose compared to the current North/South lines proposed by Councilmember Mahan, which significantly dilute the voice of Latino, Asian, and Black voters and tenants in both D2 and D10.

Residents in the northern portions of these districts along I-85 have shared their shared economic, social and cultural needs including their interests as renters, interest in transit and transit oriented development opportunities, including a number of affordable projects. I-85 is a significant dividing line in terms of the character of our communities in South San Jose.

Please support Councilmember Cohen's proposed lines in South San Jose, Districts 2 and 10 and 6 and 9, instead of disrupting our communities and diluting votes of communities already struggling.

Elena Robles



This message is from outside the City email system. Do not open links or attachments from untrusted sources.

VAR & SSPC | Letters from the Public | 12/14/21 Agenda Item 3.4: Redistricting

Philip Nguyen <[REDACTED]>

Mon 12/13/2021 6:52 PM

To: City Clerk <[REDACTED]>

Cc: Board <[REDACTED]> Staff 2020 <[REDACTED]>

[External Email]

You don't often get email from [REDACTED] [Learn why this is important](#)

[External Email]

Dear San Jo e City Council,

Attached is a joint statement from the Vietnamese American Roundtable and Si Se Puede Collective, and the undersigned community member representing themselves as an individual and/or as their respective organization, demanding that the boundaries of District Four and Five, District Five and Seven, and District Seven and Eight be preserved.

Best,
Philip

Philip Nguyen (he/him)
Executive Director
Vietnamese American Roundtable | <http://varoundtable.org>

This message is from outside the City email system. Do not open links or attachments from untrusted sources.

This message is from outside the City email system. Do not open links or attachments from untrusted sources.



December 9, 2021

JOINT STATEMENT FROM VIETNAMESE AMERICAN ROUNDTABLE AND SI SE PUEDE COLLECTIVE DEMANDING THAT THE BOUNDARIES OF DISTRICTS FOUR AND FIVE, DISTRICTS FIVE AND SEVEN AND DISTRICTS SEVEN AND EIGHT BE PRESERVED

We, the Undersigned, demand the following boundaries be preserved as they currently exist:

1. The boundary between Districts 4 and 5
2. The boundary between Districts 5 and 7
3. The boundary between Districts 7 and 8

The Vietnamese American Roundtable and the Si Se Puede Collective have been consistent supporters of the Unity Map because we share the same goals of promoting equity and building stronger communities. We strongly believe that working for the collective well-being of our communities requires being good allies and building trust. We stood alongside trusted allies such as the NAACP and Asian Law Alliance in support of the Unity Map because it elevated the voices of communities of color and would allow us to address the impacts of historical redlining.

Our Council rejected these efforts on December 7 when it rejected all proposed maps and instead started to create its own. This was an attempt at compromise, but the result has effectively allowed council members to draw their own districts without data or community feedback. This process wastes the yearlong effort of our residents and community organizations while the people we have sought to protect and elevate become pawns in political gamesmanship.

There is no more obvious example of this than what is being proposed for the boundary between Districts 4, 5, 7, and 8. District 5 has a strong Latinx population. The Alum Rock corridor has a rich tapestry of history and culture and is home to generations of Mexican-Latino families. The May Day Marches originate in District 5 every year as those who stand for immigrants make their way over the 101 towards City Hall to show solidarity and strength. The art, activity, food, and businesses of District 5 reflect how Latinx families have reclaimed an area long defined by neglect. Sadly, this District is still undergoing massive displacement and school closures.

District 7 is the cultural and economic center for the Vietnamese community. The Vietnamese American Community Center, the Vietnamese American Service Center, Little Saigon, the Viet Museum, and the beginnings of the Heritage Garden are all located in District 7. Grand Century Mall, Vietnam Town, and Lion Plaza buzz every year in celebration of the Lunar New Year and provide an outlet for cultural events, culinary exploration, and community gatherings that have become traditions for our city. All of this growth has come after decades of commitment and effort from the refugee community to rebuild their homes and replace what they lost in war.

Despite this, the proposed changes to the boundaries of Districts 4, 5, 7, and 8 dramatically dilute the density of the Hispanic population and Asian American population in Districts 5 and 7 respectively with no reason or analysis to justify it. Furthermore, we are appalled that the Council would play into such a divide and conquer strategy between the Asian and Latino communities.

The stakes here are high - the way these districts are drawn will impact our livelihood and the ability for our children to grow up in a culturally rich community. They will impact how we are represented in the next decade and beyond. These stakes eclipse any short-term political gains. We cannot stand by and allow a decrease in representation that might lead to further displacement and institutional neglect.

During the San José redistricting process, there has shockingly been no representation of Asian Americans on either the council or the commission. The only way that Asian Americans have been able to have their say has been through public comment and coalition building. It is for this reason that the undersigned submit this statement jointly. We and the proponents of the Unity Map sought to strengthen the voices of ourselves and other Black, Indigenous, and People of Color by standing together in solidarity. Solidarity means that we support and elevate each other. Solidarity does not come at the expense of one community of color to benefit another. In solidarity, we strive beyond benefits to individuals and individual communities to focus on what we can achieve by working together. This is not what we saw on display during the December 8 Council Meeting as it relates to the proposed changes to Districts 4, 5, 7, and 8.

The responsibility of redistricting falls on the Council only once every ten years. The majority of the Council must approve the redistricting map for it to be adopted. As such, no Councilmember can evade responsibility for these changes by claiming that this was not their decision to make. We demand that there be **no** changes to the boundaries of Districts 4 and 5, Districts 5 and 7, and Districts 7 and 8 from their current positions.

In solidarity with the Black Leadership Kitchen Cabinet and other allies who seek to elevate the voices of communities of color, we also support their call to align the boundaries of Districts 6 and 9 and Districts 2 and 10 so as not to divide our African-American communities.

To join this statement please sign your name and the organization you represent below. You may sign as an individual with a title rather than on behalf of an organization, as well.

Please speak up for our communities. The next meeting will be December 14 after 6pm via Zoom at <https://sanjoseca.zoom.us/j/93052835954> or in person at City Hall Council Chambers 200 E Santa Clara Street. When you share your comment, please specify that you are making your statement with VAR and the Si Se Puede Collective. The agenda will be posted at <https://sanjose.legistar.com/Calendar.aspx>. Comments may be submitted by emailing [REDACTED] by December 13. A final map must be adopted by January 11, 2022.

In solidarity,

Signees on Behalf of Entities or Organizations

[Document permission is set to "Comment" - to sign on, please leave a comment and the team will add your name below]

Atkinson Tran, President, Vietnamese American Roundtable

Philip Nguyen, Executive Director, Vietnamese American Roundtable

Gabriel Hernandez, Director, Si Se Puede Collective

Veronica Goei, Executive Director, Grail Family Services, Si Se Puede Collective Member

Jessica Paz-Cedillos, Executive Director, School of Arts and Culture at MHP, Si Se Puede Collective Member

Vanessa Shieh, Associate Director, School of Arts and Culture at MHP, Si Se Puede Collective Member

Saul Ramos, Acting Co-Executive Director, SOMOS Mayfair, Si Se Puede Collective Member

Victor Vasquez, Acting Co-Executive Director, SOMOS Mayfair, Si Se Puede Collective Member

Cayce Hill, Executive Director, Veggielution, Si Se Puede Collective Member

Maritza Maldonado, Executive Director, Amigos de Guadalupe, Si Se Puede Collective Member

Mimi Nguyen, Executive Director of Step Forward Foundation

Mimi Hernandez, Executive Director of Prosperity Labs

Bob Nunez, President of San José/Silicon Valley National Association for the Advancement of Colored People (NAACP)

Richard Konda, Executive Director of Asian Law Alliance

Bao Trieu, President of Vietnamese Voluntary Organization (VIVO)

Phuong Nguyen, on behalf of Voice of Vietnamese Americans Association

Quyen Vuong, Executive Director of International Children Assistance Network (ICAN)

An Vo, President of United Vietnamese Student Associations of Northern California

Nam Phu Pham, on behalf of Dan Sinh Media and the Viet Museum

Loc Van Vu, on behalf of the Viet Museum

Darcie Green, Executive Director, Latinas Contra Cancer

Individual Signees

The Hon. Otto Lee, Santa Clara County Supervisor, District 3

The Hon. Alex Lee, State Assemblymember District 25

The Hon. Mike Honda, former 17th Congressional District Representative

The Hon. Evan Low, State Assemblymember District 28

The Hon. Wendy Ho, San Jose-Evergreen Community College District Board

The Hon. Minh Pham, Trustee, Alum Rock Union Elementary School District

The Hon. Omar Din, Councilmember, City of Sunnyvale

The Hon. Naomi Nakano-Matsumoto, Trustee, Fremont Union High School District

The Hon. Van Le, President of the East Side Union High School District

The Hon. Tam Nguyen, former Councilmember for San Jose District 7

Isabella Luong, Board Member of Vietnamese American Roundtable (D6)

Huy Tran, Board Member of Vietnamese American Roundtable (D4)

Anthony Le, Board Member of Vietnamese American Roundtable (D4)

Rich Kwok, small business owner North San Jose

Linda Nguyen, Board Member of Vietnamese American Roundtable (D7)

Jake Tonkel, South Bay Progressive Alliance Elections Reform Chair

Christine Pham, Board Member Vietnamese American Roundtable (D10)

Cindy Nguyen, Board Member of Vietnamese American Roundtable (D4)

Alicia Luong, Board Member of Vietnamese American Roundtable

Jenny Do, Co-Executive Director of Friends of Hue Foundation (D3)

Christina Johnson, Board Member of Vietnamese American Roundtable (D2)

Ruth Silver Taube, Coordinator of the Santa Clara County Wage Theft Coalition

Angelica Cortez, LEAD Filipino

Jahmal Williams, Black Leadership Kitchen Cabinet of Silicon Valley

Gerald Hunt, 40 year community resident and supporter of the Unity Map

Dan Huynh, Board Member of Union of North American Vietnamese Student Associations (UNAVSA) (D5)

An Le, Teacher at Milpitas Unified School District (MUSD) (D5)

Daniel Cao (D1)

Anne Nguyen, D4 Resident & registered voter

Maria Marroquin, Executive Director of the Mt. View Day Worker Center

Karina Velazquez (D10)

Felwina Opiso-Mondina, member of Pilipino Association of Workers and Immigrants (PAWIS)

Adriana Garcia, Community Organizer, MAIZ San Jose, District 7 Resident

Eunice Chun, Executive Director, Korean American Community Services

**TUYÊN BỐ CHUNG TỪ HỘI VIETNAMESE AMERICAN ROUNDTABLE VÀ TẬP THỂ SI SE PUEDE
YÊU CẦU GIỮ NGUYÊN RANH GIỚI CỦA
CÁC QUẬN 4 VÀ 5, QUẬN 5 VÀ 7 VÀ QUẬN 7 VÀ 8**

Chúng tôi, những người ký tên dưới đây, yêu cầu các ranh giới sau đây được bảo tồn và giữ nguyên:

1. Ranh giới giữa quận 4 và quận 5
2. Ranh giới giữa quận 5 và quận 7
3. Ranh giới giữa quận 7 và quận 8

Tổ chức Vietnamese American Roundtable (VAR) và tập thể Si Se Puede là những tổ chức và cá nhân ủng hộ cho bản đồ thống nhất (Unity Map). Tất cả chúng tôi có cùng mục tiêu là thúc đẩy sự công bằng và xây dựng cộng đồng một cách mạnh mẽ hơn. Chúng tôi sát cánh cùng các tổ chức đáng tin cậy như Asian Law Alliance, NAACP và REAL Coalition trong việc tạo ra Bản đồ Thống nhất (Unity Map) với mục đích nâng cao tiếng nói cho cộng đồng da màu, và sửa chữa những sai lầm của chiến thuật khoanh vùng trong quá khứ.

Ngày 7 tháng 12 năm 2021, hội đồng thành phố San Jose đã từ chối cả bản đồ Unity, lẫn 2 bản đồ khác được đề xuất là Community Map và Commissioned Map. Thay vào đó, hội đồng thành phố đã quyết định tạo nên bản đồ riêng. Mặc dù quyết định này mang tính thoả hiệp, nhưng nó không phải là lý do chính đáng để các Nghị viên Thành phố có thể tự ý phân chia các Quận theo ý của mình mà không phải dựa theo số liệu. Các tổ chức cộng đồng, các cá nhân tình nguyện viên đã dành cả năm trời để nghiên cứu số liệu dân số và tham khảo ý kiến cộng đồng trong quá trình soạn thảo các tấm bản đồ này. Thế nhưng khi đối mặt trước lợi ích chính trị của các Nghị viên Thành phố, công sức của họ đã bị gạt qua một bên một cách dễ dàng.

Không có ví dụ nào rõ ràng hơn về điều này ngoài những gì đang được đề xuất cho ranh giới giữa các Quận 4, 5, 7 và 8. Quận 5 có dân số người Mỹ Latin đông đúc. Khu Alum Rock có một bề dày lịch sử và văn hóa phong phú, và là nơi sinh sống của nhiều thế hệ người Mỹ gốc Latin. Quận 5 là nơi bắt đầu của nhiều diễn biến lịch sử của người gốc Mexico, như các cuộc Diễn hành Ngày Lễ Lao Động Tháng Năm đi từ 101 hướng tới Tòa thị chính để thể hiện sự đoàn kết và sức mạnh của người di dân. Sự phát triển của nghệ thuật, thực phẩm và doanh nghiệp của Quận 5 phản ánh cách các gia đình Mỹ gốc Latin đã tự xây dựng nơi họ sống, một khu vực đã bị các giới chức lãng quên. Đáng buồn thay, khu vực này sẽ trải qua quá trình di dời lớn với các đề xuất mới nhất từ hội đồng Thành phố.

Quận 7 là trung tâm văn hóa và kinh tế của cộng đồng người Việt. Trung tâm Cộng đồng Việt Mỹ, Trung tâm Dịch vụ Việt Mỹ, khu Little Saigon, và Vườn Truyền thống Việt đang thi công đều nằm ở Quận 7. Grand Century Mall, Vietnam Town, và Lion Plaza náo nhiệt hàng năm vào dịp Tết Nguyên đán cùng những sự kiện văn hóa, ẩm thực và các cuộc tụ họp cộng đồng đã trở thành truyền thống của thành phố chúng ta. Sự phồn vinh này là kết quả của nhiều thập kỷ nỗ lực của cộng đồng người tị nạn để xây dựng lại “ngôi nhà” và thay thế những gì họ đã mất trong chiến tranh.

Những thay đổi ranh giới giữa các Quận 4, 5, 7 và 8 được đề xuất sẽ làm loãng mật độ dân số người Mỹ gốc Latin ở Quận 5 và người Mỹ gốc Á Châu ở Quận 7 một cách đáng kể. Những thay đổi này không dựa vào bất kỳ một lý do chính đáng hoặc nghiên cứu nào ngoại trừ việc thúc đẩy chia rẽ giữa cộng đồng Người Gốc Á và cộng đồng Người Gốc Latin khi bắt buộc họ phải tranh giành phiếu bầu. Chúng tôi rất thất vọng với hành động này từ phía các Nghị viên.

Cộng đồng chúng ta đang đứng trước thời khắc rất quan trọng. Chúng ta sẽ mất rất nhiều với những thay đổi này. Việc phân chia khu sẽ ảnh hưởng trực tiếp đến sinh hoạt trong cuộc sống của chúng ta và đặc biệt là việc con em chúng ta có thể hay không lớn lên trong một môi trường văn hóa Việt. Những

giá trị này hoàn toàn đáng quý hơn là lợi ích chính trị hiện tại của các Nghị viên Thành phố. Chúng ta không thể làm ngơ trước các sự thay đổi nhằm giảm sự đại diện chính trị của chúng ta một cách trắng trợn này.

Cứ mỗi 10 năm, dựa theo số liệu mới từ Thống kê Dân số, các Nghị viên có trách nhiệm phân chia lại các Quận trong Thành phố một cách công bằng cho các sắc dân đang chung sống trong thành phố. Số đông các Nghị viên phải chấp thuận bản đồ mới trước khi nó được thực thi. Vì vậy, không người Nghị viên nào có thể né tránh trách nhiệm bằng cách nói đó không phải là Quận của họ, hoặc là đó không phải là đề xuất của họ. Chúng tôi yêu cầu bãi bỏ các thay đổi về ranh giới giữa Quận 4 và 5, giữa Quận 5 và 7, giữa Quận 7 và 8.

Trong tình đoàn kết với Black Leadership Kitchen Cabinet và các đồng minh khác trong cuộc đấu tranh cho tiếng nói của người da màu, chúng tôi cũng ủng hộ lời kêu gọi của họ để sắp xếp ranh giới của Quận 6 và 9, và Quận 2 và 10 sao cho không chia cắt khu xóm của người Mỹ gốc Phi.

Để chung tiếng nói với chúng tôi trong tuyên bố này, vui lòng ký tên của quý vị và tổ chức mà quý vị đại diện dưới 1 trong 2 phần "Signees on Behalf of Entities or Organizations" (Ký tên đại diện cho hội đoàn) hoặc "Individual Signees" (Ký tên dưới tư cách cá nhân) phía trên lá thư này.

Xin quý vị lên tiếng đóng góp ý kiến của mình vào buổi họp hội đồng ngày 14 tháng 12 năm 2021 vào sau 6 giờ chiều. Quý vị có thể đến phát biểu trực tiếp tại City Hall Council Chambers, 200 E Santa Clara Street, hoặc qua mạng với ứng dụng Zoom tại đường link:

<https://sanjoseca.zoom.us/j/93052835954>. Khi phát biểu, xin quý vị nói là mình đồng lòng với tập thể VAR và Si Se Puede để thể hiện sức mạnh và sự đoàn kết từ cộng đồng mình. Quý vị cũng có thể gửi email với ý kiến của mình vào [REDACTED] trước ngày 13 tháng 12 năm 2021. Khi quý vị chia sẻ nhận xét của mình, vui lòng nêu rõ rằng quý vị đang đưa ra tuyên bố của mình chung tiếng nói với VAR và Si Se Puede.

Item 3.4 Redistricting Letter for 12/14/21 City Council Meeting

Nick Kuwada <[redacted]>

Mon 12/13/2021 5:59 PM

To: The Office of Mayor Sam Liccardo <[redacted]> District1 <[redacted]>
 District2 <[redacted]> District3 <[redacted]> District4 <[redacted]> District5 <[redacted]>
 District6 <[redacted]> District7 <[redacted]> District8 <[redacted]>
 District9 <[redacted]> District10 <[redacted]>

Cc: Reed, Jim <[redacted]> Gomez, David <[redacted]> Sandoval, Vanessa <[redacted]>
 Ramos, Christina M <[redacted]> Brown, Stacey <[redacted]>
 Arreola, Kiara <[redacted]> Groen, Mary Anne <[redacted]>
 Kaspar, Nick <[redacted]> McGarrity, Patrick <[redacted]>
 Hughes, Scott <[redacted]> Quevedo, Matthew <[redacted]>
 City Clerk <[redacted]> Kyra Kazantzis <[redacted]> Alan Gouig <[redacted]>

You don't often get email from [redacted] [Learn why this is important](#)

[External Email]

[E ternal Email]

Dear Mayor Liccardo and distinguished members of the City Council,

Please find attached a letter from SVCN regarding agenda item 3.4 for the December 14 City Council meeting.

Thank you,

Nick Kuwada | Policy Director | he/him/his

Silicon Valley Council of Nonprofits

Web: svcn.org | Twitter: [@SVCN](https://twitter.com/SVCN)

[Check out the SVCN Nonprofit Giving Guide!](#)



This email and any files transmitted with it are confidential and intended solely for the use of the individual or entity to whom they are addressed. If you have received this email in error please notify the system manager. This message contains confidential information and is intended only for the individual named. If you are not the named addressee you should not disseminate, distribute, or copy this e-mail.

This message is from outside the City email system. Do not open links or attachments from untrusted sources.

This message is from outside the City email system. Do not open links or attachments from untrusted sources.



December 14, 2021

San José City Council
San José City Hall
200 E. Santa Clara St.
San José, CA 95113
Sent via electronic mail

Re: Item 3.4 City of San José Council District Redistricting Public Hearing

Dear Mayor Liccardo and Members of the City Council:

We write to you on behalf of the Silicon Valley Council of Nonprofits (SVCN), an alliance of community-based organizations working to support thriving and equitable communities in Santa Clara County. We are writing with concern about the current Council redistricting map.

- The Latinx share of potential voters (Citizen Voting Age Population) are reduced in the Council map compared to the Cohen map, especially in Districts 2 (-1%), 3 (-.6%), 5 (-1%) and 6 (-1.5%), although it does increase Latinx CVAP in District 7 (2.8%). Overall, in Districts 1 through 8 (our most diverse districts), the Council map reduces Latinx vote share by a third of a percentage point on average in each district. (Source: Unity Map Table)
- For potential Asian voters, the Council map reduces Asian voter share by about .6% per a district in Districts 1 through 8. (Source: Unity Map Table)
- The changes to the District 5 and District 7 border dilute the density of the Latinx population and specifically the Vietnamese American population in Districts 5 and 7. (Source: Vietnamese American Roundtable/[Sí Se Puede Collective Statement](#).)
- The Council Map reduces potential African/African Ancestry voter share by a half point per district which, due to the relatively small size proportionally of African/African Ancestry population in San José, amounts to a 14% real cut to the voice of those voters in San José per district in Districts 1 through 8. (Source: Unity Map Table Data)

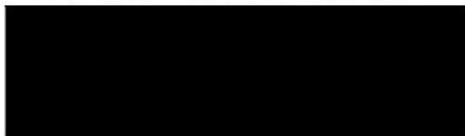
In order to rectify the suppression of the vote for these communities of color, we recommend adopting the Districts 6 and 9, and Districts 2 and 10 boundaries that were originally proposed by Councilmember Cohen.

SVCN also supports the Vietnamese American Roundtable and Sí Se Puede Collective's joint request. It is important to defer to the wishes and needs of united communities of color that are also communities of interest in the districts that have been the most impacted during the past two years of the pandemic and historically.

Regards,



Kyra Kazantzis, CEO



Nick Kuwada, Policy Director

Redistricting Dec. 14, Agenda Item 3.4

David Noel <[REDACTED]>

Tue 12/14/2021 4:41 AM

To: City Clerk <[REDACTED]> District1 <[REDACTED]> District2 <[REDACTED]> District3 <[REDACTED]>
 District4 <[REDACTED]> District5 <[REDACTED]> District 6 <[REDACTED]>
 District7 <[REDACTED]> District8 <[REDACTED]> District9 <[REDACTED]>
 District 10 <[REDACTED]> The Office of Mayor Sam Liccardo <[REDACTED]>
 Liccardo, Sam <[REDACTED]> Davis, Dev <[REDACTED]>
 Jones, Chappie <[REDACTED]> Esparza, Maya <[REDACTED]>
 Jimenez, Seraio <[REDACTED]> Peralez, Raul <[REDACTED]> Carrasco, Magdalena <[REDACTED]>
 Arenas, Sylvia <[REDACTED]>

[E ternal Email]

[External Email]

Honorable Mayor and City Council,

I'm writing to urge you to elect di trict border that enable ucce ful Urban Village to be built along Blo om Hill Road From Hwy 85 to Kooser. This is critical for the success of our city, local residents, and the marginalized.

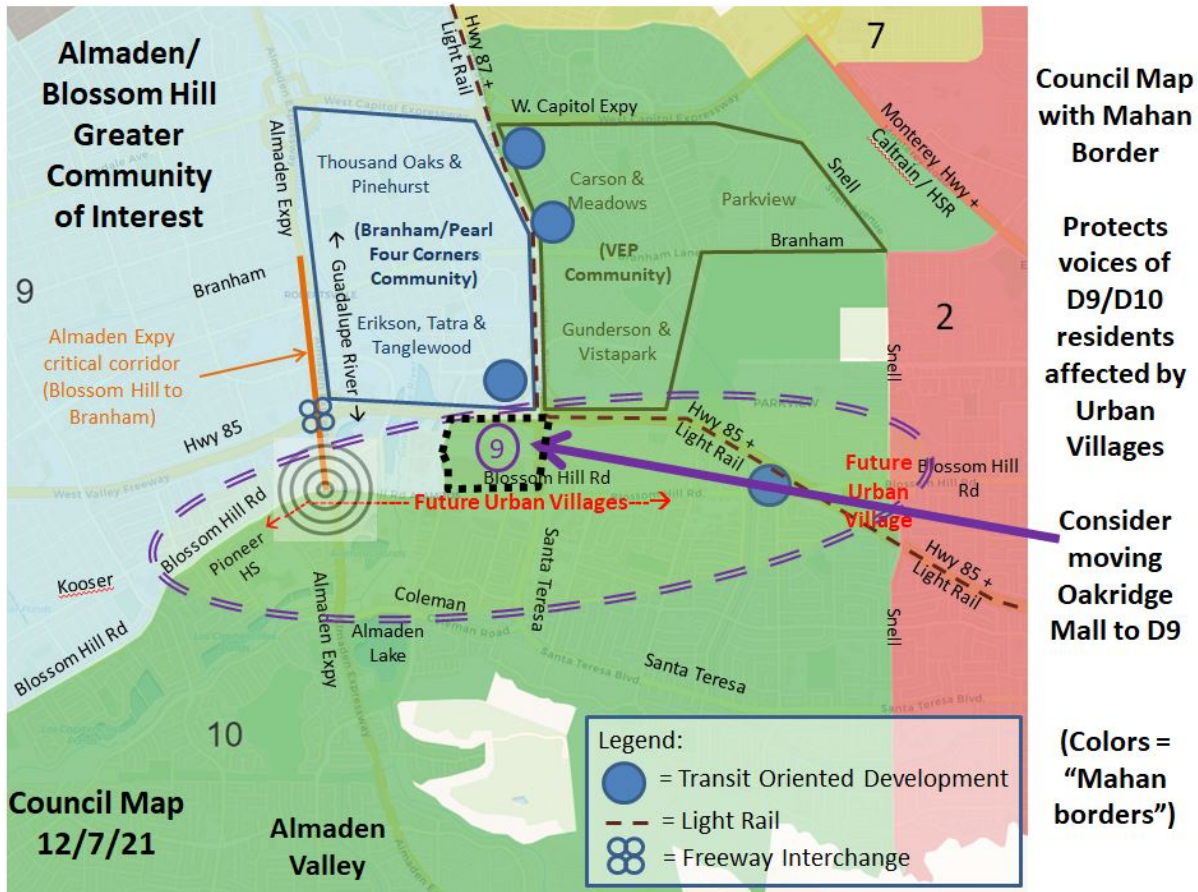
The Almaden/Blossom Hill area is very complicated with a tenuously balanced infrastructure. The Urban Villages will tre that infra tructure, impacting re ident for great di tance in all direction , e pecially north/ outh We'll need excellent representation to make sure the infrastructure keeps up.

The best way to ensure affected residents have a voice is to use Blossom Hill as the D10/D9 border, and Snell a the D10/D2 border Secondly, Almaden E py from Blo om Hill to Branham need to be contained in a single district, which is currently the case on all maps under consideration.

Below (and attached) I have overlaid our COI on 3 maps in order of preference:

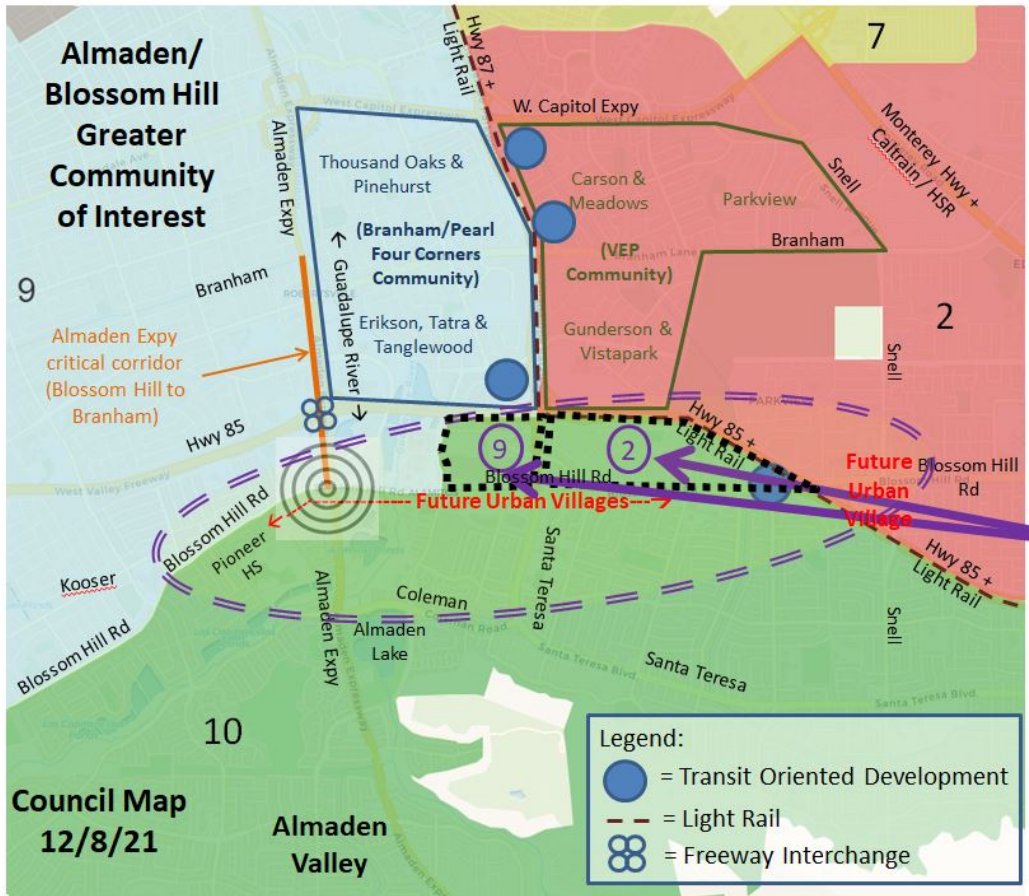
1. COUNCIL MAP WITH "MAHAN" D10/D2 BORDERS (i.e. current borders):

The following map i by far the be t Re ident mo t affected by the Urban Village are well repre ented The borders also align nicely with our north/south-tending COI in terms of transportation corridors, shopping, dining, school districts, the Guadalupe River, Light Rail and Transit Oriented Developments.



2. COUNCIL MAP:

The following map is less ideal but could represent affected residents with minor adjustments as noted. The borders do not align as well with our COI, but they do represent a significant improvement over the Unity Map. Note that this map displaces Gunderson High School and Carson Elementary School from D10 to D2, which has different school district



Council Map:

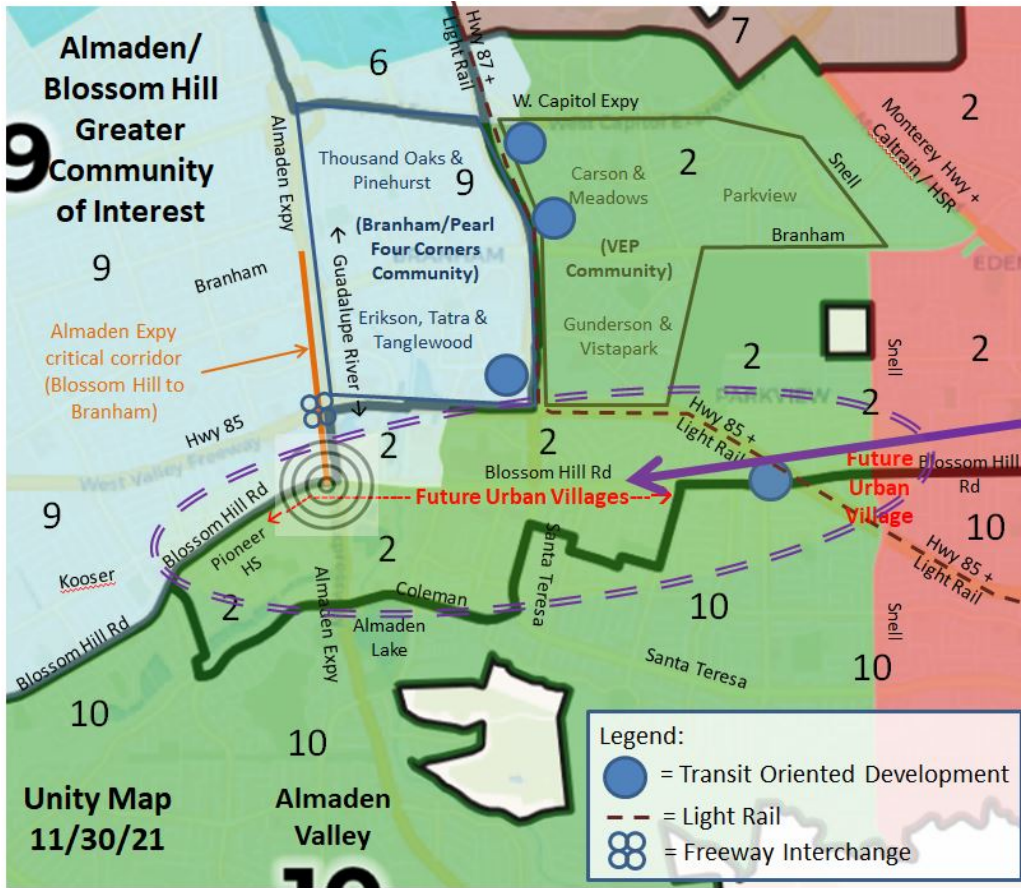
Needs adjustment to protect voices of D9/D2 residents affected by Urban Villages

Move Oakridge Mall to D9 & Playa Del Rey to D2

(Colors = Council Map borders)

3.UNITY MAP:

The following map would be very bad for our area. It would **silence the voices** of the D9 & D10 residents most affected by the Urban Village. It hatter all of our north/ outh tending COI feature li ted above, and add a 3rd district in the highly complex Almaden Expressway and Guadalupe River corridors. (Note: borders are denoted with thick green lines on this map; disregard the colors.)



Unity Map:

Silences voices of D9/D10 residents affected by Urban Villages

Blossom Hill should be D9/D10 boundary

(Colors = current borders, wide lines = Unity Map borders)

Regards,

David Noel, President
Erikson Neighborhood Association (D9)

This message is from outside the City email system. Do not open links or attachments from untrusted sources.

This message is from outside the City email system. Do not open links or attachments from untrusted sources.

Redistricting Dec. 14, Agenda Item 3.4

Jourdan Bickham <[REDACTED]>

Tue 12/14/2021 7:43 AM

To: City Clerk <[REDACTED]> District1 <[REDACTED]> District2 <[REDACTED]> District3 <[REDACTED]>
 District4 <[REDACTED]> District5 <[REDACTED]> District 6 <[REDACTED]>
 District7 <[REDACTED]> District8 <[REDACTED]> District9 <[REDACTED]>
 District 10 <[REDACTED]> The Office of Mayor Sam Liccardo <[REDACTED]>
 Liccardo, Sam <[REDACTED]> Davis, Dev <[REDACTED]>
 Jones, Chappie <[REDACTED]> Esparza, Maya <[REDACTED]>
 Jimenez, Seraio <[REDACTED]> Peralez, Raul <[REDACTED]> Carrasco, Magdalena <[REDACTED]>
 Arenas, Sylvia <[REDACTED]>

[E ternal Email]

Some people who received this message don't often get email from [REDACTED] [Learn why this is important](#)

[E ternal Email]

Honorable Mayor and City Council,

I'm contacting you regarding the current redistricting effort taking place. I would like to urge you to select district borders that enable successful Urban Villages to be built along Blossom Hill Road From Hwy 85 to Kooser. This is critical for the success of our city, local residents, and the marginalized

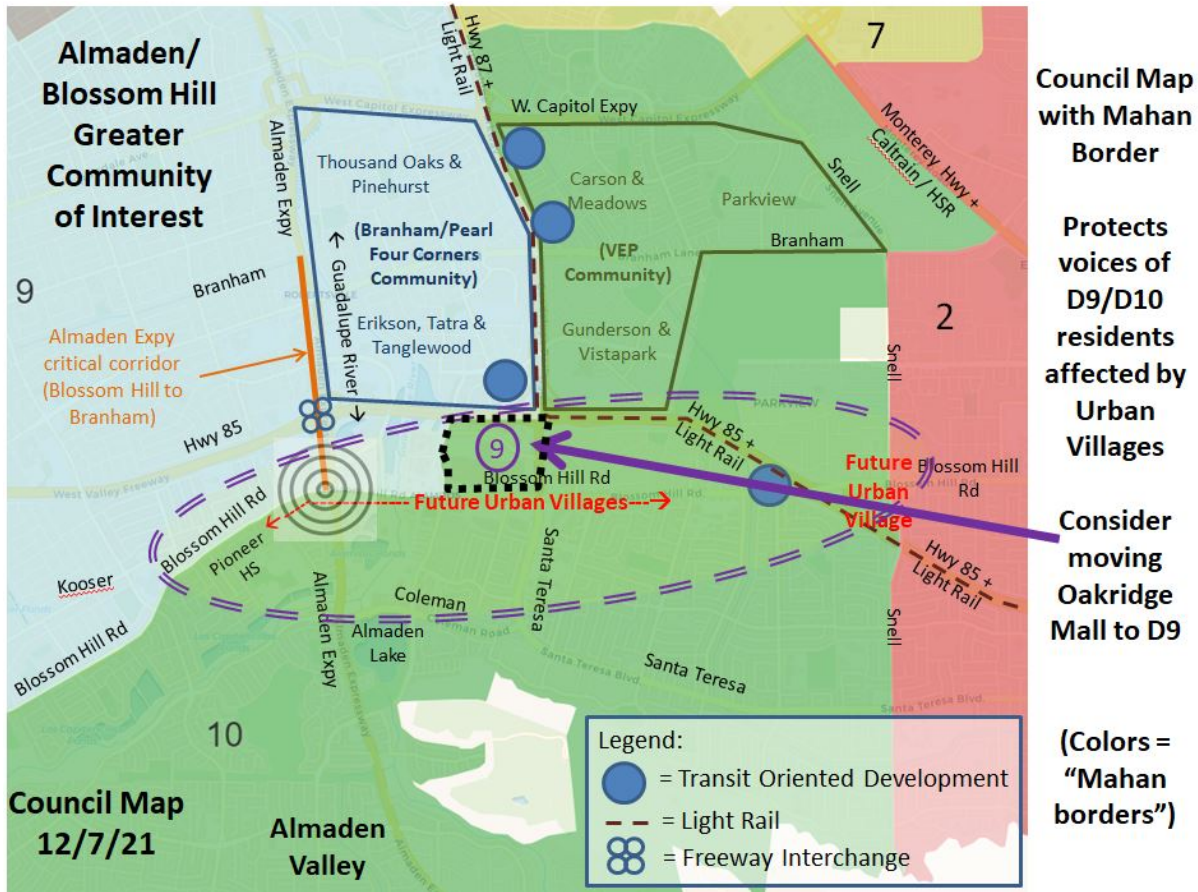
The Almaden/Blossom Hill area is very complicated with a tenuously balanced infrastructure. The Urban Villages will stress that infrastructure, impacting residents for great distances in all directions, especially north/south. We'll need excellent representation to make sure the infrastructure keeps up

The best way to ensure affected residents have a voice is to use Blossom Hill as the D10/D9 border, and Snell as the D10/D2 border. Also, Almaden Expy from Blossom Hill to Branham needs to be contained in a single district, which is currently the case on all maps under consideration

Below our COI has been overlayed on 3 maps in order of preference:

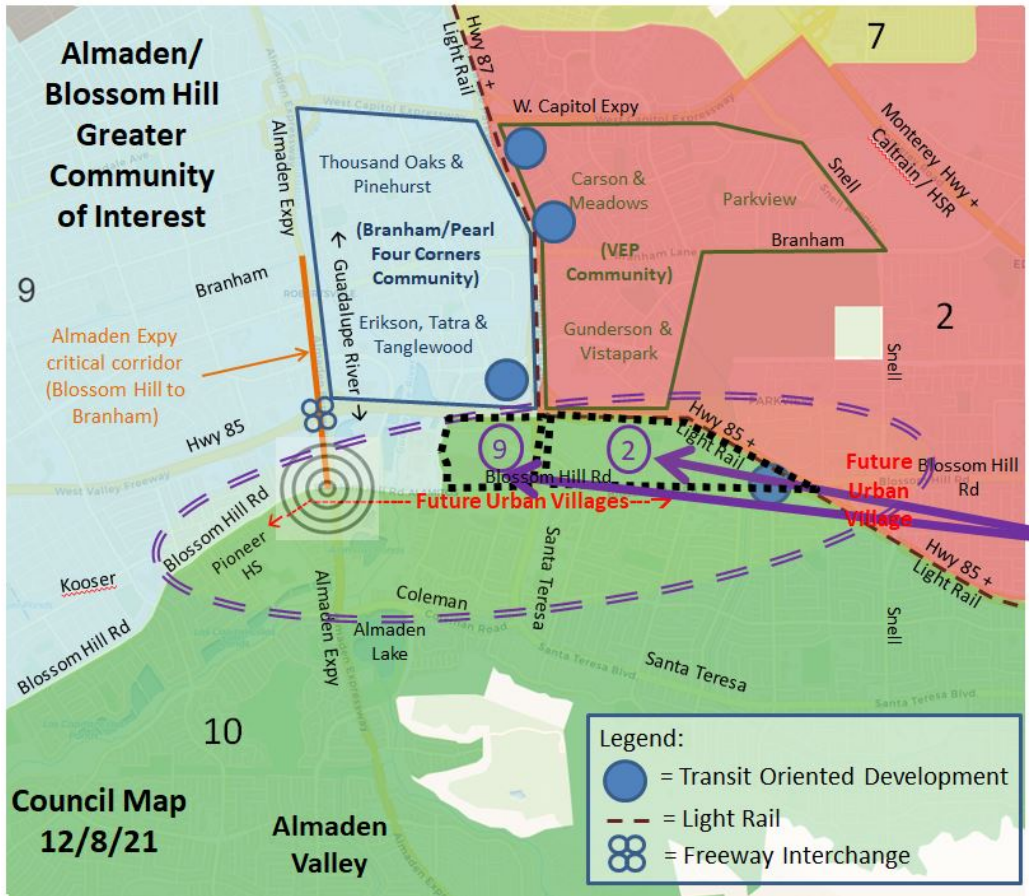
1. COUNCIL MAP WITH "MAHAN" D10/D2 BORDERS (i.e. current borders):

The following map is by far the best. Residents most affected by the Urban Villages are well represented. The border also aligns nicely with our north/south trending COI in terms of transportation corridor, shopping, dining, school districts, the Guadalupe River, Light Rail and Transit Oriented Developments.



2. COUNCIL MAP:

The following map is less ideal but could represent affected residents with minor adjustments as noted. The borders do not align as well with our COI, but they do represent a significant improvement over the Unity Map. Please note that this map displaces Gunderson High School and Carson Elementary School from D10 to D2, which has different school district



Council Map:

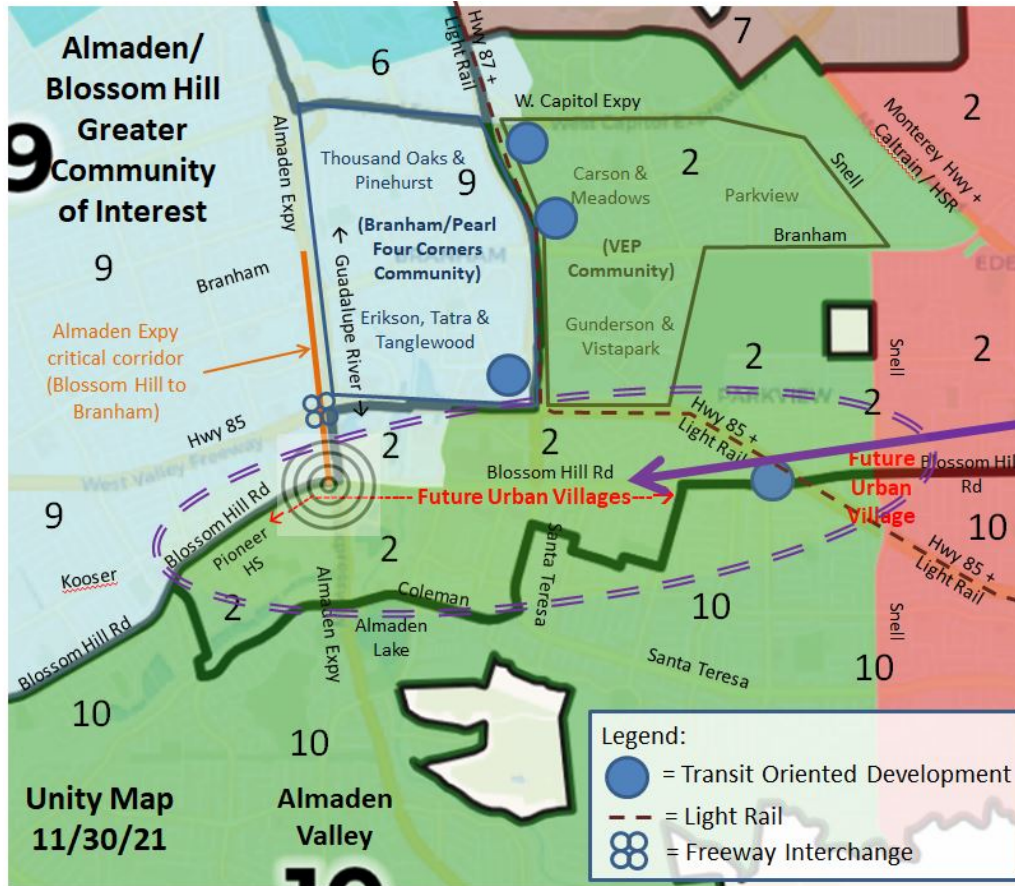
Needs adjustment to protect voices of D9/D2 residents affected by Urban Villages

Move Oakridge Mall to D9 & Playa Del Rey to D2

(Colors = Council Map borders)

3.UNITY MAP:

The following map would be very bad for our area. It would **silence the voices** of the D9 & D10 residents most affected by the Urban Village. It hatter all of our north/ outh tending COI feature li ted above, and add a 3rd district in the highly complex Almaden Expressway and Guadalupe River corridors. (Note: borders are denoted with thick green lines on this map; disregard the colors.)



Unity Map:

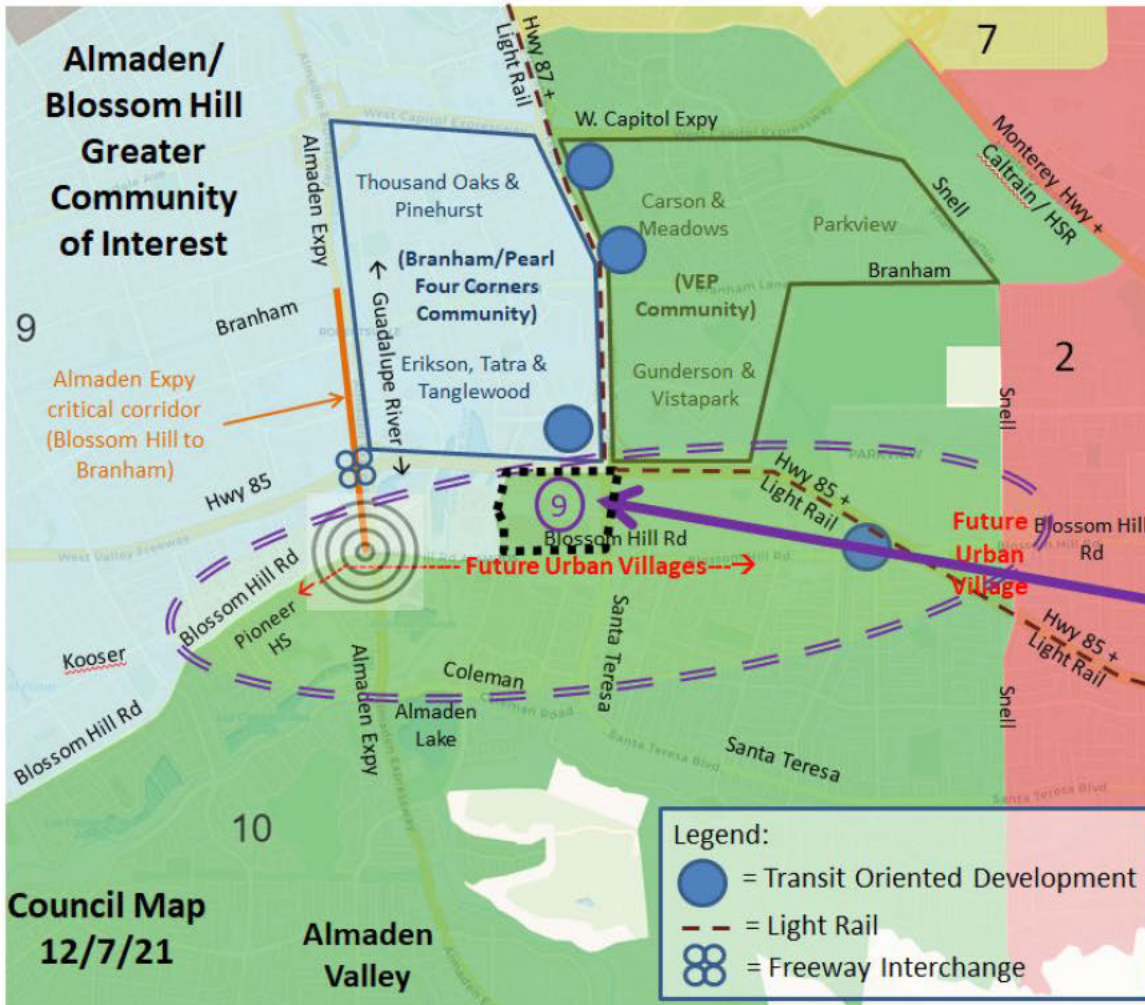
Silences voices of D9/D10 residents affected by Urban Villages

Blossom Hill should be D9/D10 boundary

(Colors = current borders, wide lines = Unity Map borders)

Regards,

Jourdan Bickham, Board Member
Pinehurst Residents Association (D9)

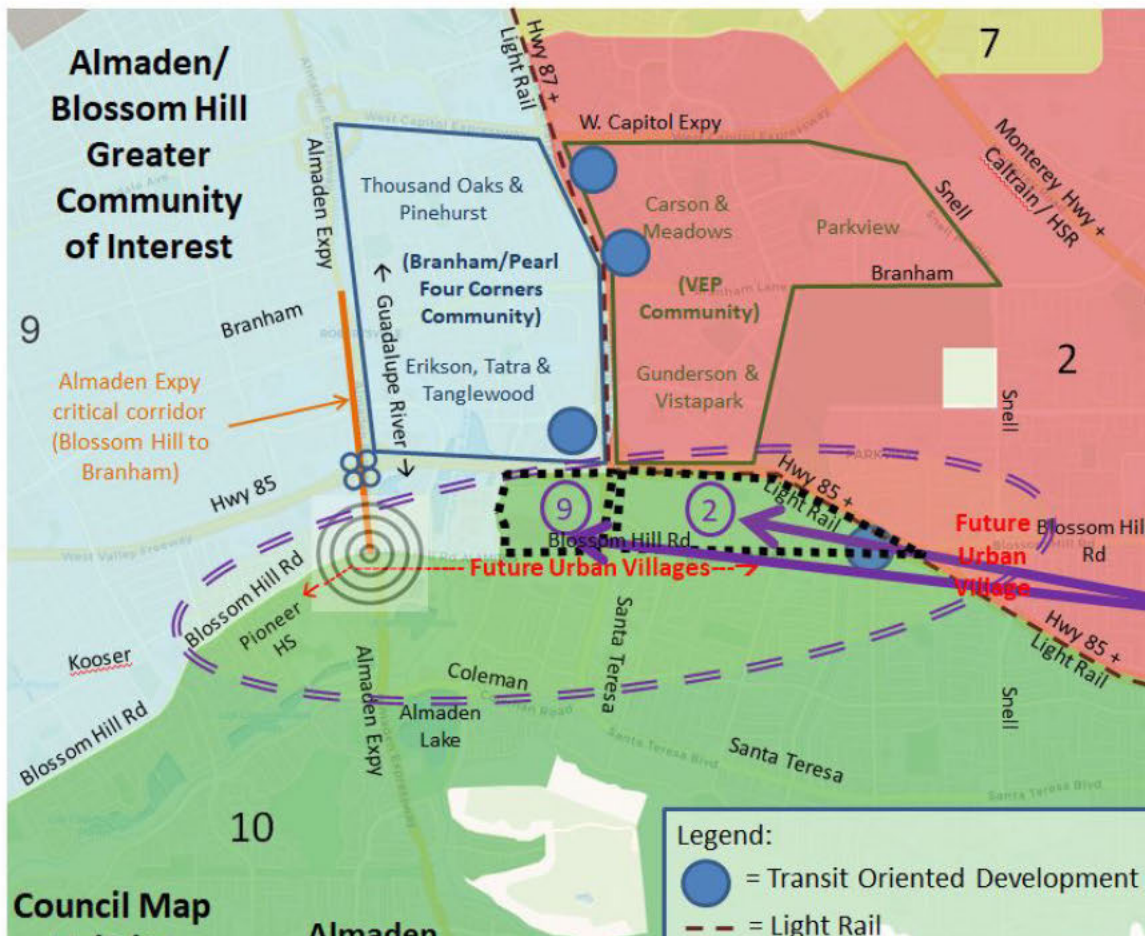


Council Map with Mahan Border

Protects voices of D9/D10 residents affected by Urban Villages

Consider moving Oakridge Mall to D9

(Colors = "Mahan borders")

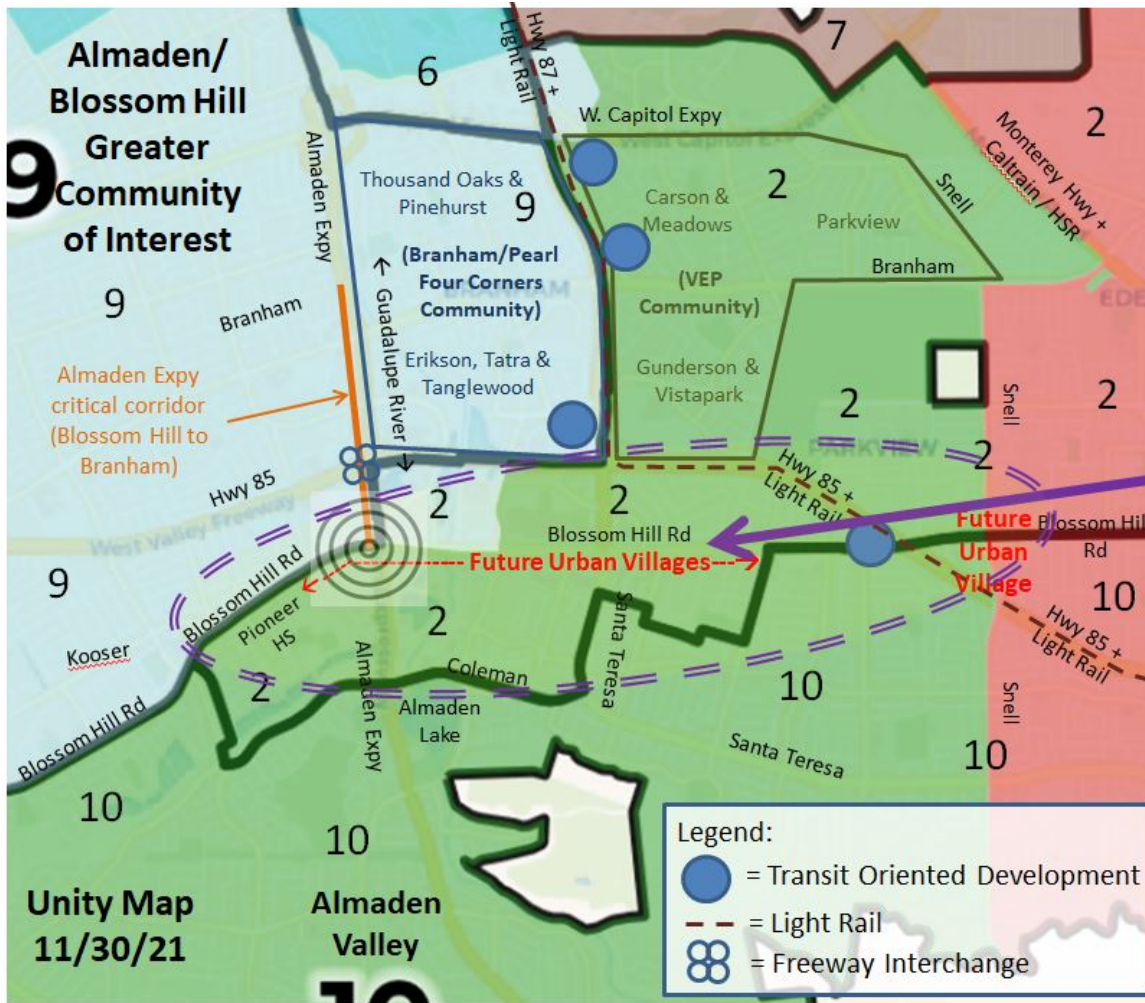


Council Map:

Needs adjustment to protect voices of D9/D2 residents affected by Urban Villages

Move Oakridge Mall to D9 & Playa Del Rey to D2

(Colors = Council Map)

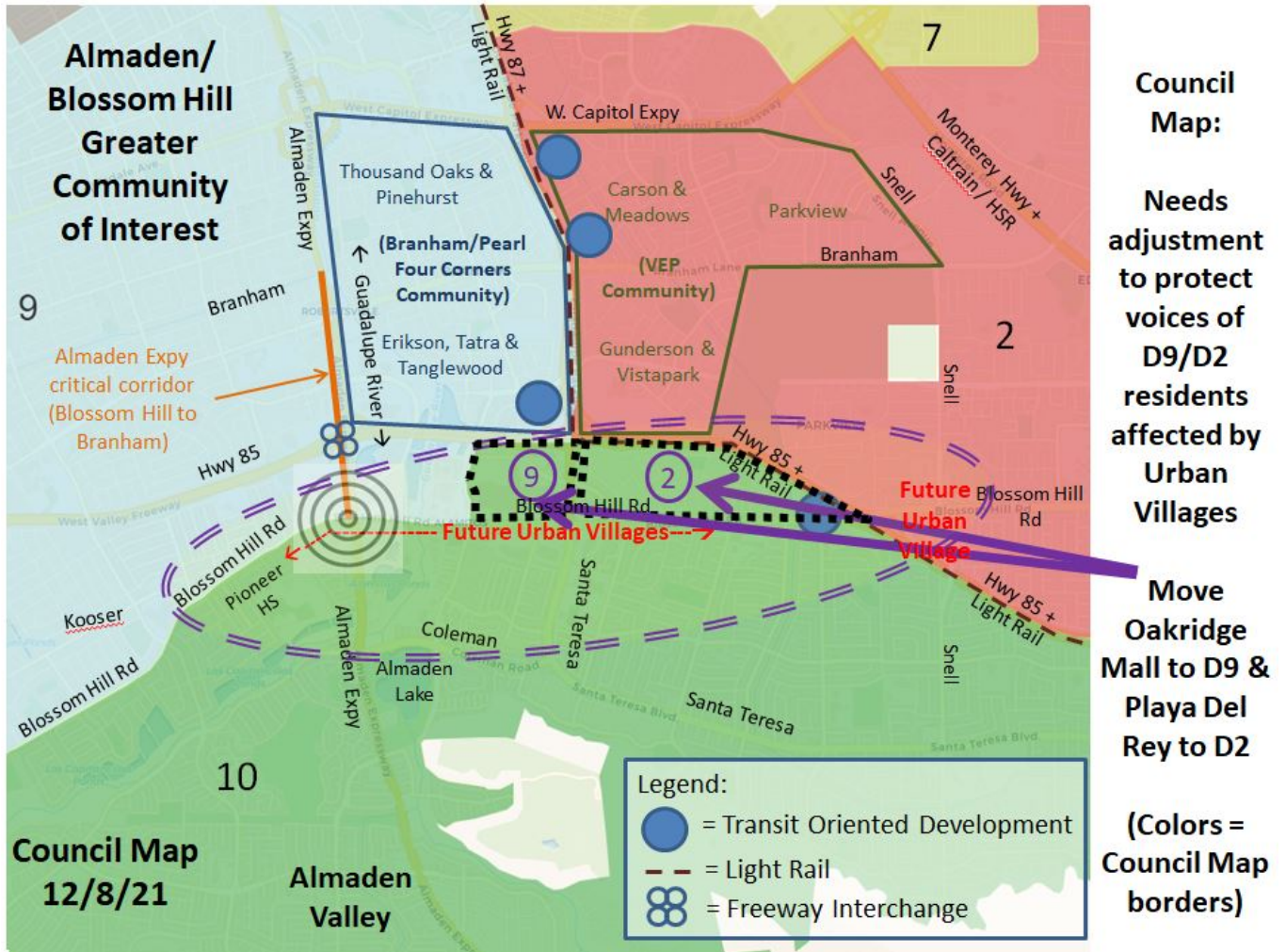


Unity Map:

Silences voices of D9/D10 residents affected by Urban Villages

Blossom Hill should be D9/D10 boundary

(Colors = current borders, wide lines = Unity Map borders)



This message is from outside the City email system. Do not open links or attachments from untrusted sources.

This message is from outside the City email system. Do not open links or attachments from untrusted sources.

Fw: Do not break apart willow glen

redistricting <[REDACTED]>

Tue 12/14/2021 7:57 AM

To: Agendadesk <[REDACTED]>

From: mary strangis <[REDACTED]>**Sent:** Monday, December 13, 2021 5:05 PM**To:** redistricting <redistrict[REDACTED]>**Subject:** Do not break apart willow glen

[You don't often get email from [REDACTED] Learn why this is important at <http://aka.ms/LearnAboutSenderIdentification.>]

[External Email]

I have lived here in willow glen over 35 years. My husband was born in willow glen in 1960

We do not support redistributing the lines that define the willow glen neighborhood. We want to continue to be considered part of willow glen.

Thank you

Mary Kay Strangis

[REDACTED]
San Jose

Sent from my iPhone

This message is from outside the City email system. Do not open links or attachments from untrusted sources.

Fw: Use Councilmember Cohen's D2/10/6/9 Lines; reject voter suppression amendments

redistricting <[REDACTED]>

Tue 12/14/2021 7:58 AM

To: Agendadesk <[REDACTED]>

From: Sam Saiu <[REDACTED]tionnetwork.org>**Sent:** Monday, December 13, 2021 7:28 PM**To:** redistricting <redistrict[REDACTED]>**Subject:** Use Councilmember Cohen's D2/10/6/9 Lines; reject voter suppression amendments

[External Email]

Redistricting City San Jose,

As a San Jose resident, I am urging the City Council to draw our City's Electoral Map using Councilmember Cohen's proposed lines in South San Jose, Districts 2 and 10 and 6 and 9. We must reject Councilmember changes that suppress votes of communities of interest, including several proposed changes from the last City Council meeting. We must ensure all of our votes have equal weight, each of our voices equal stature, and each of our communities equal resources—creating a more equitable and just City for our Black, Latino, Asian and indigenous neighbors.

The proposed changes by City Council would preserve the voter suppression currently present along the D2 and District 10 boundary. And it would even make worse boundaries than our current map along District 6 and District 9. The State of California has given us new tools to advocate for a truly fair map in its passage of the 2019 Fair Maps Act. We should be listening to unheard communities of interest, instead of focusing so much on land and communities that already have a strong voice. I am worried that changes proposed by City Councilmembers could violate the Voting Rights Act, by breaking up communities of color in some of the most heavily Latinx, Asian, and Black neighborhoods.

The proposed changes for District 6 would: add more of the Willow Glen neighborhood and cut out the very diverse areas of Canoas Gardens, home to many Latino, Black and Asian working families and renters. This would reduce the Latino population in D6 by over 2% overall, our Black community by 12% (of the already small 4% in Cohen's map), and renters by 5%, amid a major housing crisis displacing all of our working families.

This Council rightfully talks a lot about the Housing Crisis, but this is an opportunity to act on our words by actually empowering renters to have a voice.

Additionally, the proposal by Councilmember Mahan to return to the previous district lines in D2 and D10 would be a significant blow to Black, Latino, and Asian voters and renters in South San Jose which continue to have their votes suppressed by current district lines. Mahan's proposal would bring together parts of Districts 2 and 10 that share little in common demographically. This means that we are not keeping together communities of interest.

An East/West District 2 and District 10 as proposed in Councilmember Cohen's map make much more sense. It ensures everyone has a voice in South San Jose compared to the current North/South lines proposed by Councilmember Mahan, which significantly dilute the voice of Latino, Asian, and Black voters and tenants in both D2 and D10.

Residents in the northern portions of these districts along I-85 have shared their shared economic, social and cultural needs including their interests as renters, interest in transit and transit oriented development opportunities, including a number of affordable projects. I-85 is a significant dividing line in terms of the character of our communities in South San Jose.

Please support Councilmember Cohen's proposed lines in South San Jose, Districts 2 and 10 and 6 and 9, instead of disrupting our communities and diluting votes of communities already struggling.

Sam Saiu

[REDACTED]

[REDACTED]

San Jose, California 95122

This message is from outside the City email system. Do not open links or attachments from untrusted sources.

Fw: 2021 Proposed Redistricting within San Jose

redistricting <[redacted]>

Tue 12/14/2021 7:58 AM

To: Agendadesk <[redacted]>

From: [redacted] <[redacted]>

Sent: Tuesday, December 14, 2021 7:22 AM

To: redistricting <redistrict[redacted]> Roche, Megan <[redacted]> City Clerk
 <[redacted]> City Clerk <[redacted]> District 6 <[redacted]> District9
 <[redacted]> Laveroni, Kyle <[redacted]> Foley, Pam
 <[redacted]> Groen, Mary Anne <[redacted]> Davis, Dev
 <[redacted]> District1 <[redacted]> Liccardo, Sam <[redacted]>
 District3 <[redacted]> District4 <[redacted]> District5 <[redacted]>
 District7 <[redacted]> District8 <[redacted]> District2 <[redacted]>
 District 10 <[redacted]>

Cc: [redacted] <[redacted]> Taber, Toni <[redacted]>

Subject: 2021 Proposed Redistricting within San Jose

[External Email]

Dear Mayor and City Council,

The Community Map and Commission Map were created based on substantial community input. The Community Map is a grass roots effort by the people for the people of San Jose. Both these maps meet the requirements of redistricting.

It is incredibly frustrating, disappointing, and disenfranchising that City Council voted to advance a last minute map created by a newly elected council person, without community input or involvement. This maps breaks up communities of interest, neighborhoods, and disenfranchises residents. It moves district lines that there has been overwhelming community feedback that they do not want to have their neighborhood district moved or divided. It creates voting blocks for political purposes, a gerrymandered map.

Literally dismissing your own appointed redistricting commission’s map and the Community Map drawn by the residents of San Jose, creates further distrust in our government and furthers many people’s belief of the corruption within the government.

Represent the people, not your own self-interests and/or special interest groups. Listen to the residents, listen to your commission appointees, advance the Community Map or the Commission Map.

De Anna McNeal
San Jose, CA

This message is from outside the City email system. Do not open links or attachments from untrusted sources.

Fw: Willow Glen Redistricting Do not divide Willow Glen

redistricting <[REDACTED]>

Tue 12/14/2021 8:41 AM

To: Agendadesk <[REDACTED]>

From: Ken Stineman <[REDACTED]>**Sent:** Tuesday, December 14, 2021 8:41 AM**To:** Taber, Toni <[REDACTED]>**Cc:** redistricting <redistrict[REDACTED]>**Subject:** Willow Glen Redistricting - Do not divide Willow Glen

[You don't often get email from [REDACTED] Learn why this is important at <http://aka.ms/LearnAboutSenderIdentification>.]

[External Email]

To whom it may concern:

Please do not divide Willow Glen. Willow Glen is a community of interest, with a shared history, values, businesses, and traditions. It is essential for this neighborhood to stay together.

Our address is 1296 Mayette Ave, San Jose, CA, we have been a resident of Willow Glen since 1999. Our interests, schools, library, services, communication, businesses we frequent, and representatives are a key part of the Willow Glen neighborhood, downtown, and community.

Please maintain the District 6 boundaries. Support the advocacy of the Willow Glen Neighborhood association (WGNA) and the residents of District 6. Please do not divide our neighborhood.

Sincerely,

Kenneth and Denise Stineman

This message is from outside the City email system. Do not open links or attachments from untrusted sources.